

KEY FACTS

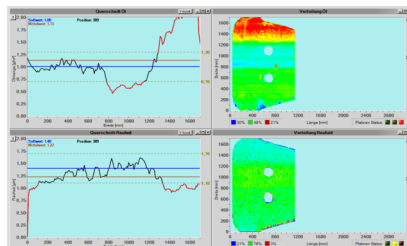
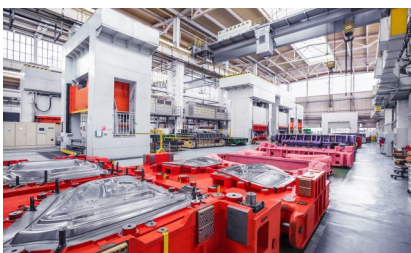
- Founded as „spin off“ of the RWTH Aachen University
- Market leader in the electromagnetic slag detection
- R & D traditionally have high priority
- More than 2.400 installed systems for surface inspection and metal production worldwide

TECHNOLOGY

- Thermographic image analysis
- Measurement of electromagnetic properties for liquid steel regarding slag, remaining steel and flow analysis
- Spectroscopic systems for oilfilm measurement on strips
- Optical systems for online roughness and waviness measurement

BUSINESS

- Innovative measuring technology for steel, aluminium and automotive industry
- Following a holistic approach, solutions for future-oriented technologies are developed
- Worldwide engineering service and support due to offices in the USA and China and further representatives



In cooperation with:



AMEPA GmbH
Karl-Carstens-Str. 12
52146 Würselen, Germany

Phone +49 2405 40808-0
E-Mail info@amepa.de
www.amepa.de