

SeeZero

SeeZero Display Quick start guide

SeeZero Display

Quick start guide

Energy usage screen

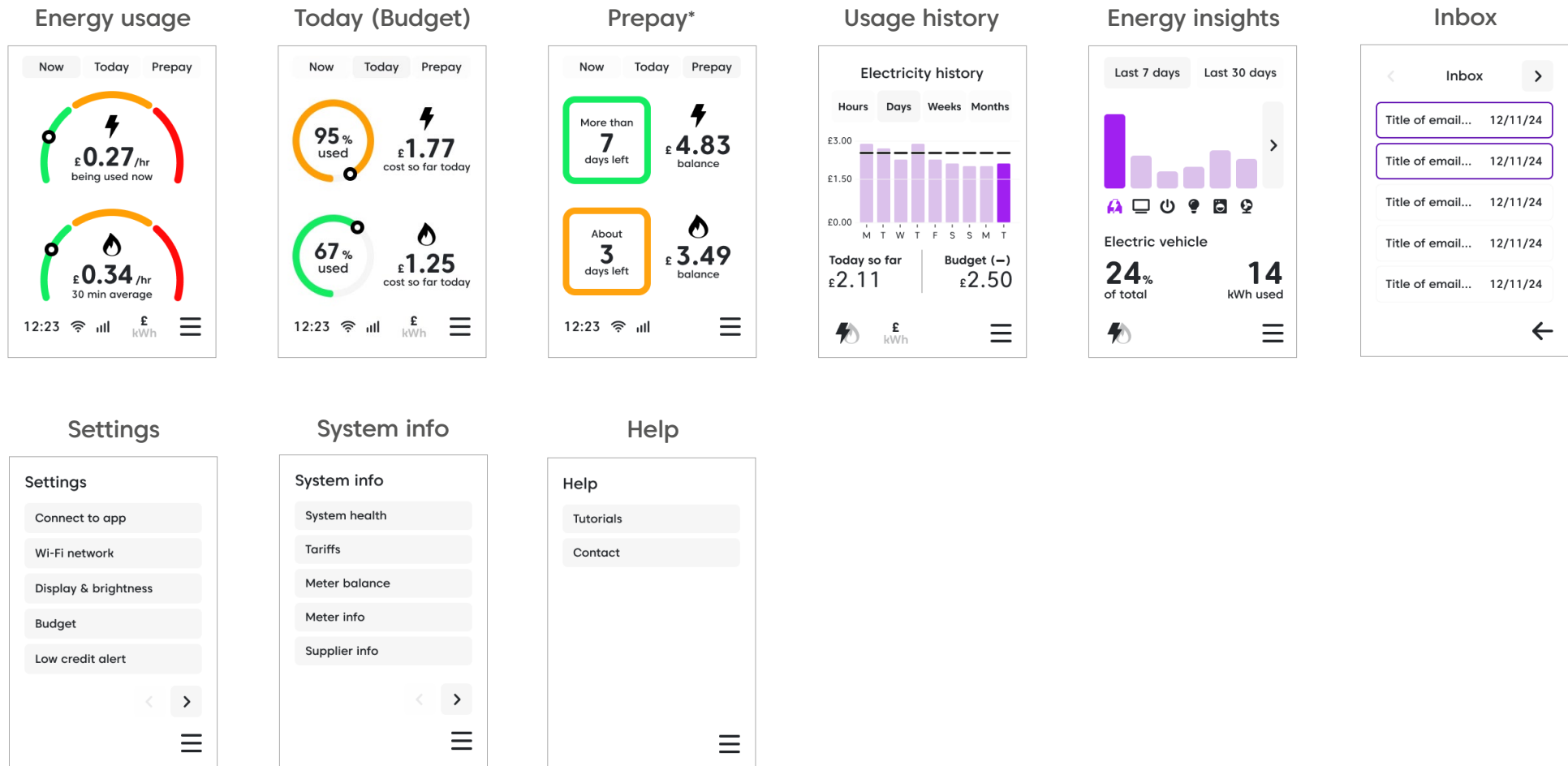
- ① Move between current live usage (Now), consumed today against a set budget (Today) and Prepay (if applicable)
- ② Dot moves between the colours based on energy usage
- ③ Hourly electricity cost based on your tariff
- ④ Gas cost based on a 30 minute average of your tariff
- ⑤ Current time
- ⑥ Wi-Fi and smart meter connection
- ⑦ Switch between £s/pence or kilowatt hours
- ⑧ Menu



SeeZero Display

Quick start guide

Click to find out more about each menu item

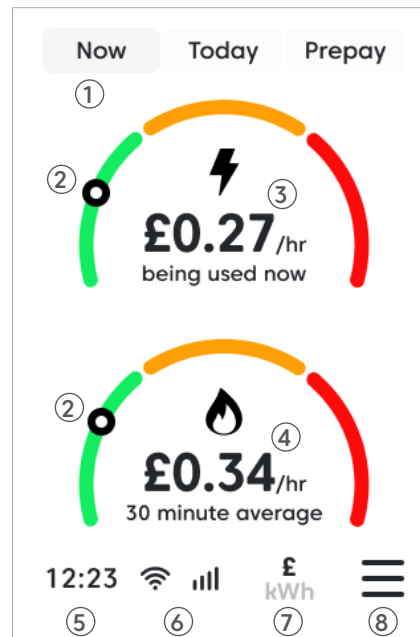


SeeZero Display

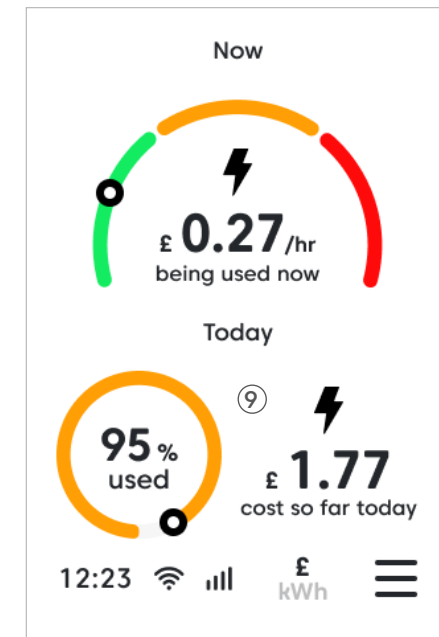
Quick start guide

Energy usage

- ① Move between current live usage (Now), consumed today against a set budget (Today) and Prepay (if applicable)
- ② Dot moves between the colours based on energy usage
 - Green Low usage
 - Amber Medium usage
 - Red High usage
- ③ Hourly electricity cost based on your tariff
- ④ Gas cost based on a 30 minute average of your tariff
- ⑤ Current time
- ⑥ Wi-Fi and smart meter connection
- ⑦ Switch between £s/pence or kilowatt hours
- ⑧ Menu
- ⑨ Budget (see page 6)



Energy usage (dual fuel)



Energy usage (single fuel)

SeeZero Display

Quick start guide

Examples of energy usage

Colour changes based on total energy used in the home. The list below categorises energy usage of items around the home

Low energy items

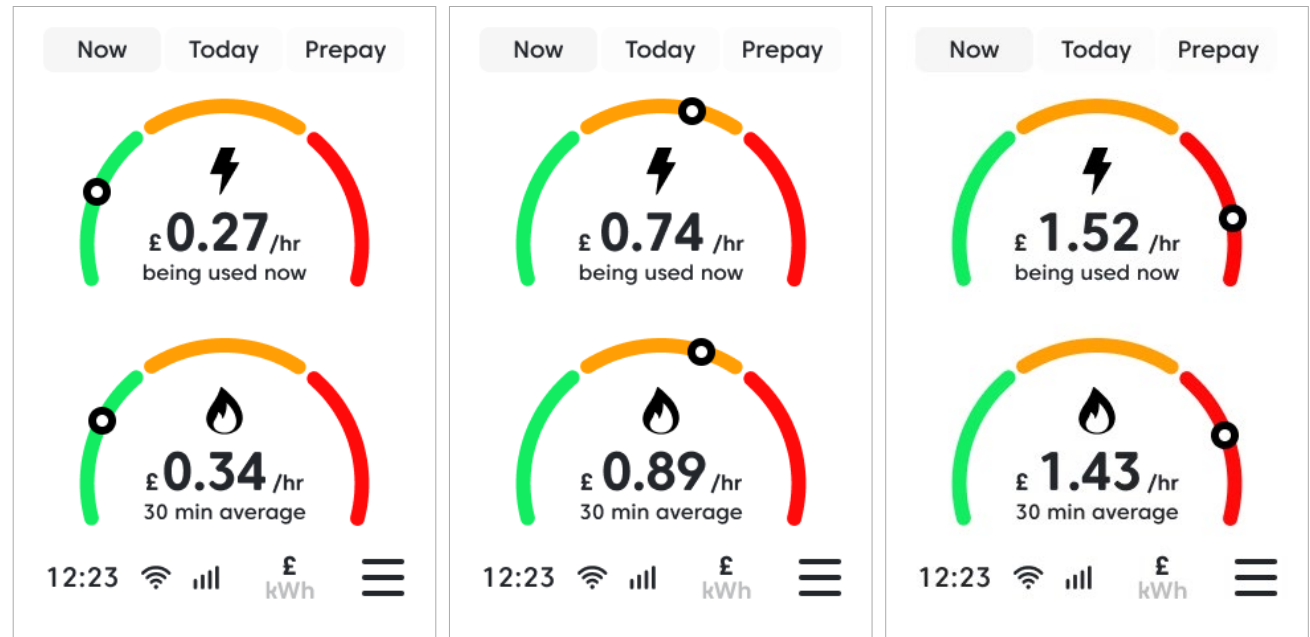
- Fridge/Freezer
- Computer
- TV
- WiFi router
- Items on standby

Medium energy items

- Microwave
- Toaster
- Vacuum cleaner

High energy items

- Electric shower
- Tumble dryer
- Washing machine
- Oven
- Hob



Low

Medium

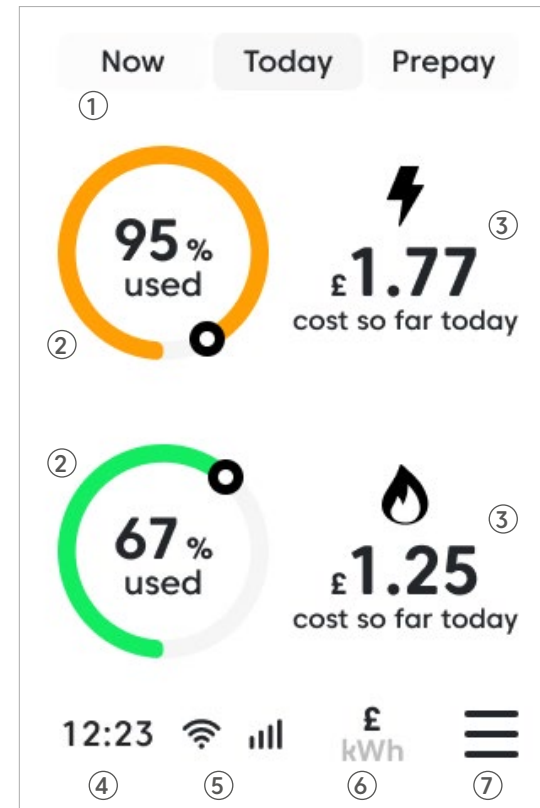
High

SeeZero Display

Quick start guide

Today (Budget)

- ① Move between current live usage (Now), consumed today against a set budget (Today) and Prepay (if applicable)
- ② Percentage used against set daily budget
 - Green Within budget
 - Amber Nearing set budget
 - Red Over budget
- ③ Energy cost so far today
- ④ Current time
- ⑤ Wi-Fi and smart meter connection
- ⑥ Switch between £s/pence or kilowatt hours
- ⑦ Menu



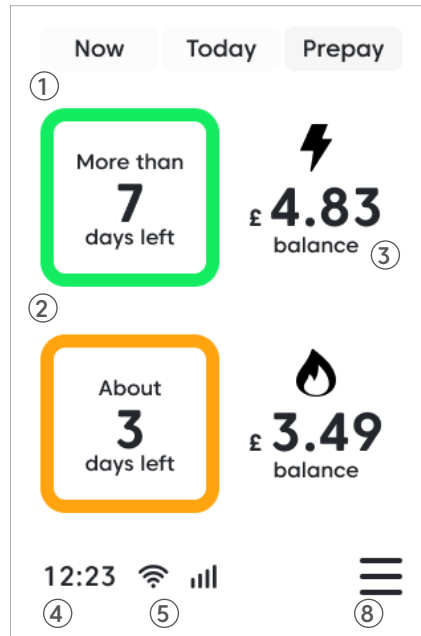
Usage against a set budget

SeeZero Display

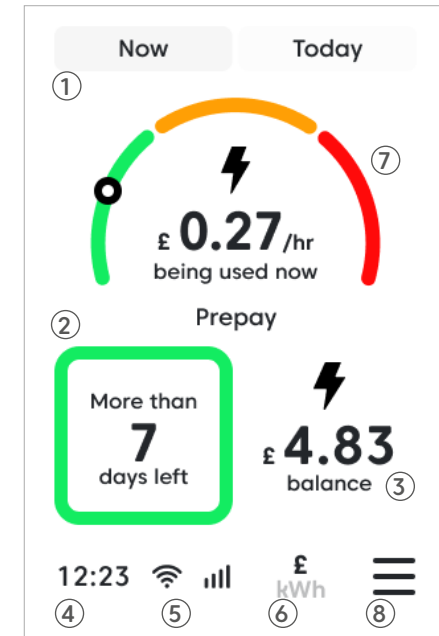
Quick start guide

Prepay

- ① Move between current live usage (Now), consumed today against a set budget (Today) and Prepay (if applicable)
- ② Estimated number of days credit will last
 - Green More than 7 days
 - Amber More than 2-6 days
 - Red Less than 1 day/ Top-up required
- ③ Balance remaining
- ④ Current time
- ⑤ Wi-Fi and smart meter connection
- ⑥ Switch between £s/pence or kilowatt hours
- ⑦ Energy usage dial (see page 4 and 5)
- ⑧ Menu



Prepay (dual fuel)



Prepay (single fuel)

SeeZero Display

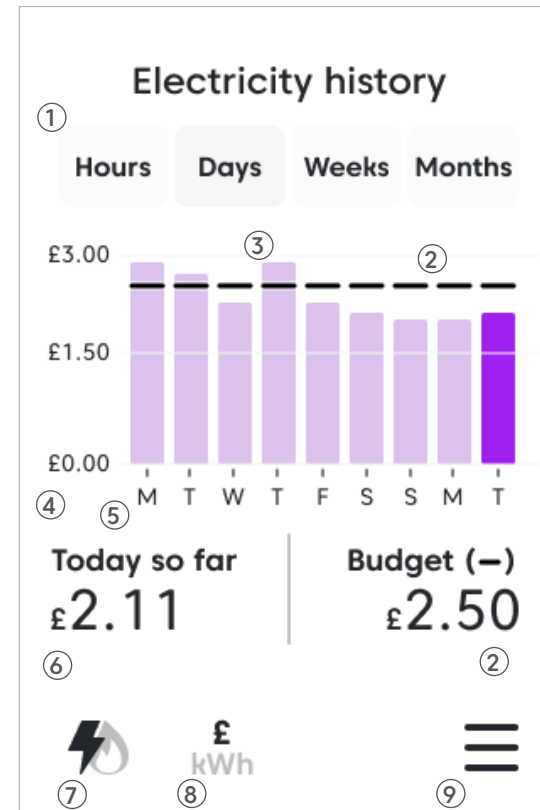
Quick start guide

Usage history

- 1 Select which period of usage you would like to view:

Hours	Days	Weeks	Months
View the last 24 hours	View the last 9 days	View the last 6 weeks	View the last 13 months

- 2 Budget
- 3 Tap the bars to view energy usage for that period
- 4 Y axis is used for energy cost in £s/pence or kilowatt hours
- 5 X axis is used for displaying hours, days, weeks or months depending on what view you're on
- 6 Energy consumed during that period in £s/pence or kilowatt hours
- 7 Choose between electricity and gas
- 8 Choose between £s/pence or kilowatt hours
- 9 Menu



Usage history

SeeZero Display

Quick start guide

Energy insights

- 1 Select which period of usage you would like to view:

Last 7 days

View the last 7 days energy usage

Last 30 days

View the last 30 days energy usage

- 2 Tap the bars to view energy usage for that category

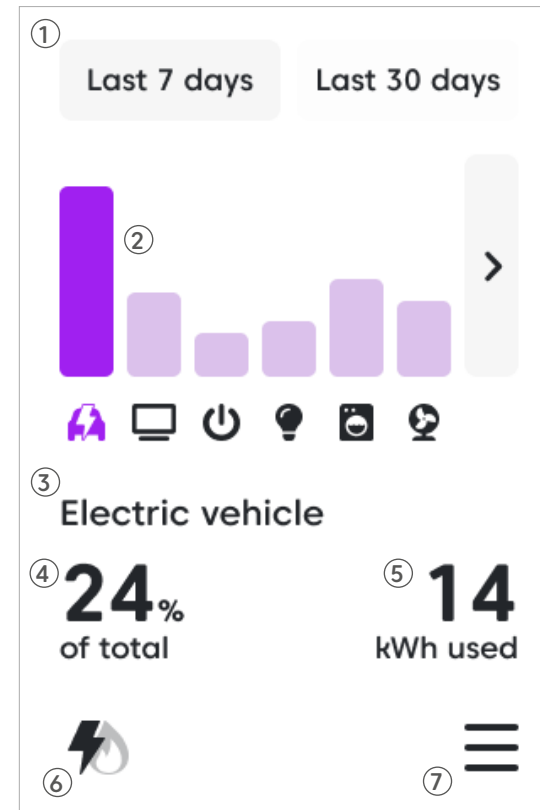
- 3 Category title

- 4 Percentage of total kilowatt hours consumption that category has used

- 5 Kilowatt hours used

- 6 Choose between electricity and gas

- 7 Menu



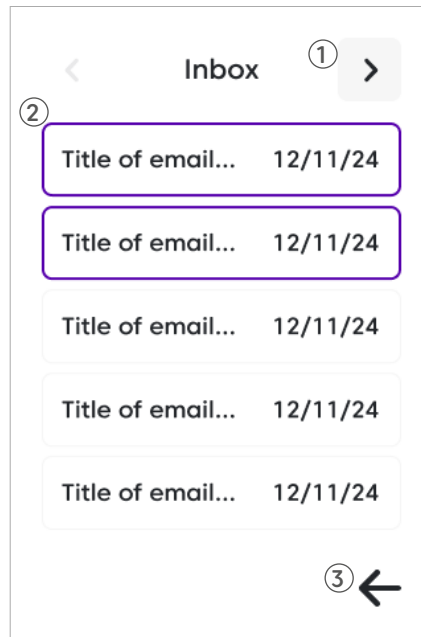
Energy insights

SeeZero Display

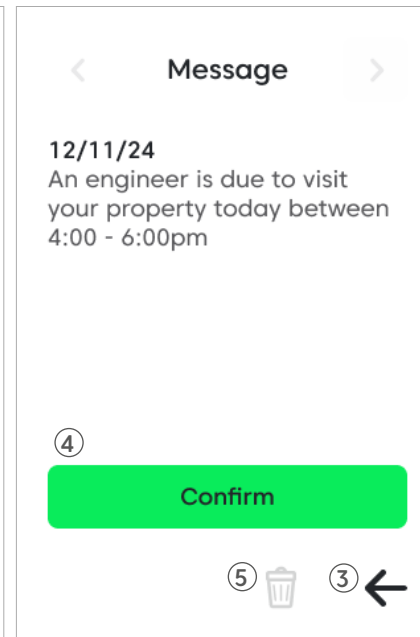
Quick start guide

Inbox

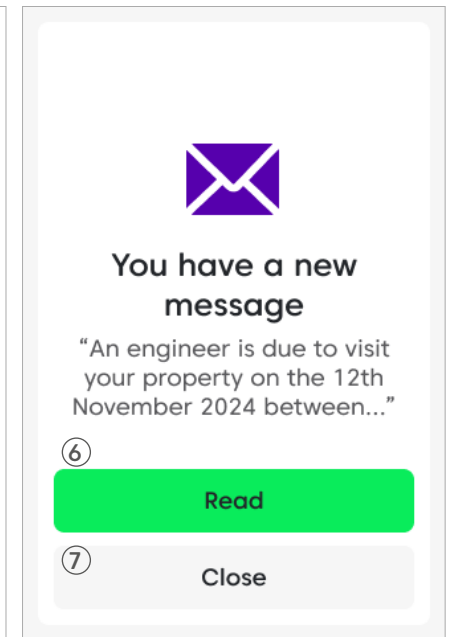
- ① Move between screens of messages
- ② Select message (Purple is unread)
- ③ Back
- ④ Confirm or Yes/no button (when pressed you're able to then delete the message)
- ⑤ Delete message
- ⑥ Read new message
- ⑦ Close new message



Inbox



Message view



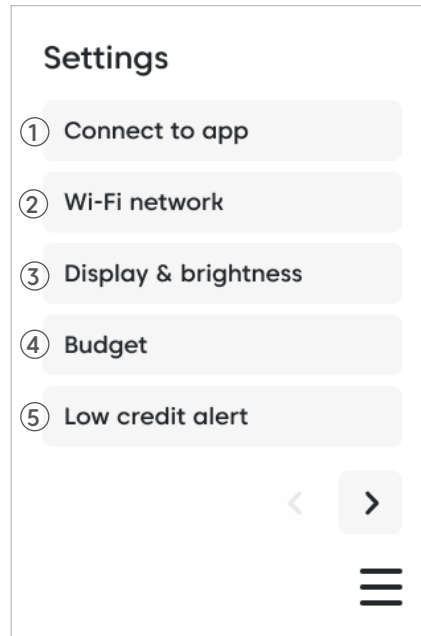
New message pop-up

SeeZero Display

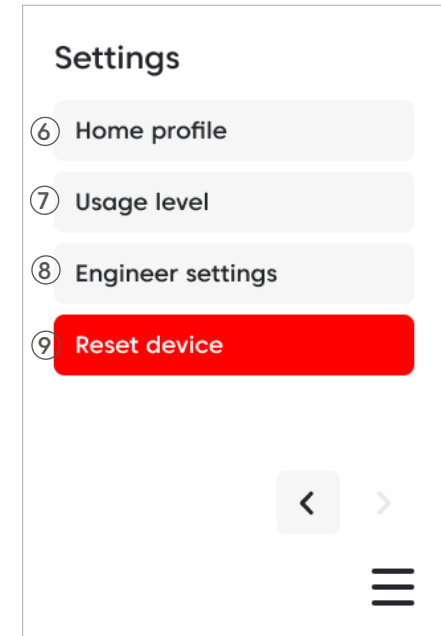
Quick start guide

Settings

- ① Connect to mobile app
- ② Connect to home Wi-Fi
- ③ Display brightness and sleep settings
- ④ Set your energy budgets
- ⑤ Set an alert level for low credit (prepay only)
- ⑥ Amend answers to home profile questions
- ⑦ Set usage levels for electricity
- ⑧ Engineer use only. Pin code required
- ⑨ Reset settings, clear data or both



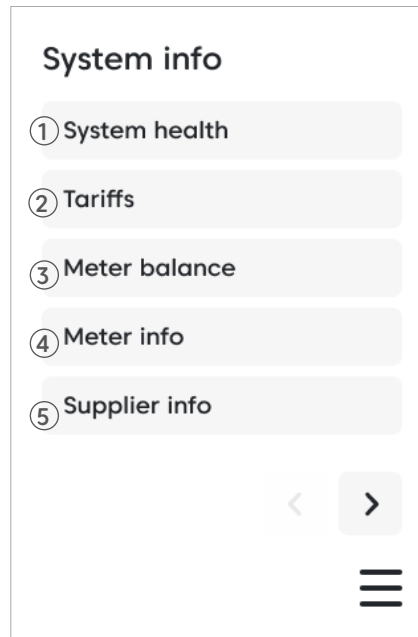
Settings



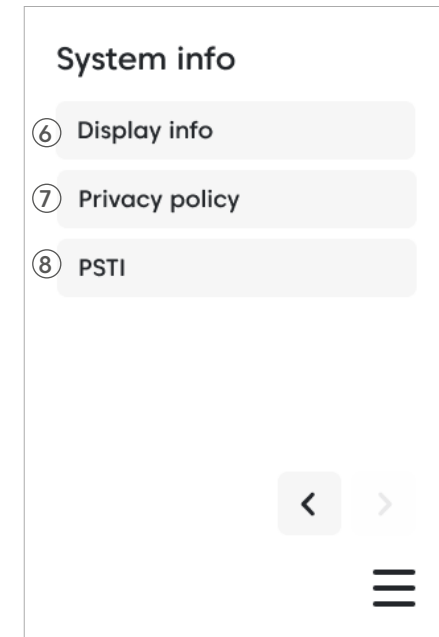
Settings

System info

- ① Check system for any issues
- ② Your tariff details
- ③ Check meter balance
- ④ Check smart meter information
- ⑤ Check energy supplier information
- ⑥ Check display information
- ⑦ Link and QR code to privacy policy
- ⑧ PSTI (Product Security and Telecommunications Infrastructure) information



System info



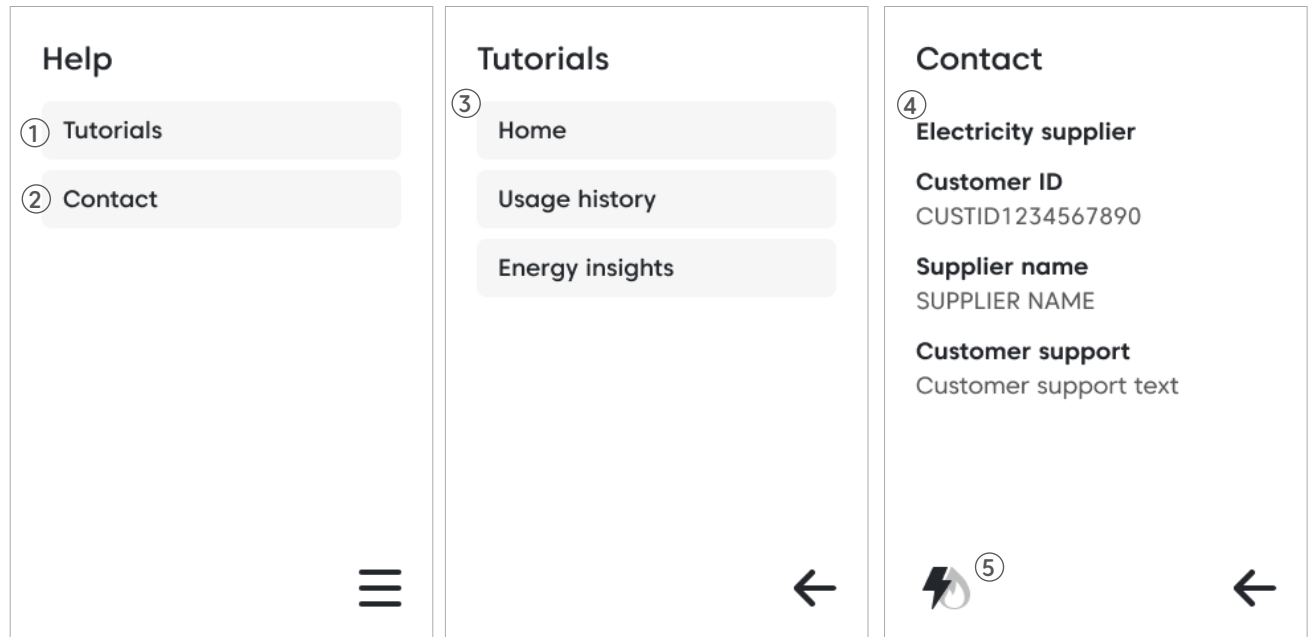
System info

SeeZero Display

Quick start guide

Help

- ① On-screen tutorials
- ② Energy retailer contact information
- ③ Available tutorials
- ④ Contact details
- ⑤ Choose between electricity and gas



Help

Tutorials

Contact