



# Solar & Battery Storage Site Selection

## Distributed Energy Solutions with Black & Veatch

### Realizing the Benefits of Distributed Energy Resources (DER)

We are passionate about realizing the potential of DER for utilities, commercial, industrial, and institutional clients. We take care of everything from assessment of the need and optimization of the right solution for your facilities through deployment and delivery of reliable and resilient energy.

No matter the power generation technology: solar photovoltaic, battery energy storage system (BESS), fuel cells, natural gas fueled generation, and combined heat and power, our team of engineers, technicians, and construction professionals are able to tailor solutions that align clients' needs with their expectations for project scope, scale, and schedule.

### Sustainability and Resiliency

The global push towards electrification and rapid technology advancements are being driven by climate change policy, decarbonization, and sustainability goals.

When combined with the desire for having resilient power under both blue skies and adverse weather event scenarios, this push also provides opportunities for consumers to meet their objective of providing continued service to their customers, while having greater control over their energy investments and costs.

### Gating Steps for Site Selection

It all begins with selecting the most viable sites for deployments, especially if you own and/or operate or serve several hundred sites. To select the most technically and economically viable sites in an expeditious manner, Black & Veatch uses a gating process for site selection.

For example, this approach helps keep the focus on the sites that are well-suited for solar and/or BESS installations. The Black & Veatch team develops a list of analysis thresholds for which the sites must stay above to be considered as "potential good candidates" for the solar and/or BESS installations.

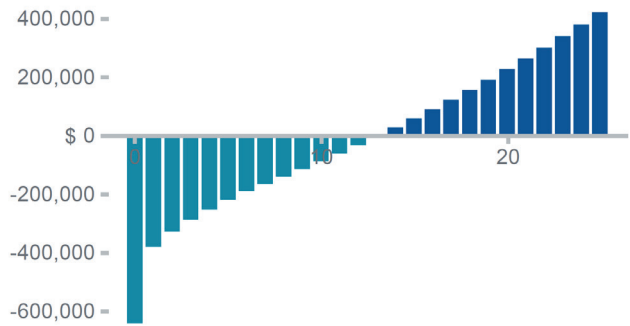
### Conceptual Design Solar + BESS Sites Gating Steps



### Proven Experience & Expertise

We have supported multiple, megawatt (MW)-scale solar and BESS projects over the past several years. As the distributed energy resources industry continues to grow, our extensive experience deploying DERs in a programmatic way, helps our clients anticipate design, construction, and operational requirements for these projects. Using tools such as HelioScope, Aurora, Energy Toolbase and others, we can easily zoom into the most technically and economically deployable sites faster than anyone else in this industry. Once the sites have been selected, we can remain as your owner’s engineer or work with you on a larger program of DER deployment.

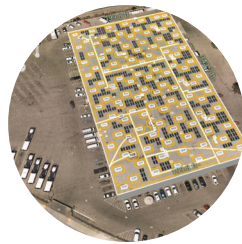
### Production Estimate and Financial Cashflow from Aurora Solar (Example).



### Projects:



*Confidential National Bank  
Distributed Solar  
Deployment Program*



*San Joaquin Regional  
Transit District Solar  
Energy Roadmap*



*City of Glendale  
Solar/Storage Development  
& DER Impact Study*



*Placer County Water  
Zero Emission Fleet  
Infrastructure Planning Study*

### Black & Veatch Solar Solutions

