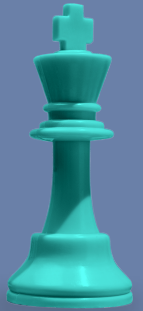


10 Things to know about RouteMagic

1

1. Your Business, your rules

RouteMagic offers 3 levels of control: Customer (ensure the expectations they have such as delivery time slots & instructions), driver (what they can and cannot do, such as take cash deposits), and Company level (whether invoicing, sales orders etc require confirmations from your Back-Offices.) Forget the need to micro-manage.



2

2. Route Planner

Advanced Route scheduling & planning (ascribing routes to vans & drivers, allocating orders, detailed order info, optimizing routes etc.) through our Route Planner, which features an easy-to-use drag-and-drop interface.



3

3. Route Monitor

Have a complete bird's eye view of your entire business' operation, at a glance. Route Monitor gives you complete visibility; vehicle locations, loading & delivery status', site summaries and PODs all get updated in real-time.



4

4. Superior Stock Control

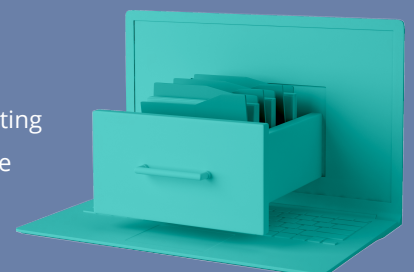
RouteMagic keeps thorough records of how much stock is in each inventory, updated as stocks are moved between warehouses, to & from vans and customers, separating damaged goods. This allows un/loading to be stress-free, whilst preventing stock pilferage.



5

5. Advanced Analytics

RouteMagic will compile reports on your business' expenditure & growth, using records from customers, sales, products etc, pinpointing the areas which require more efforts & show slow growth. Leverage these insights to outperform your competitors and expand your business with higher profit margins.



6

6. Product Management

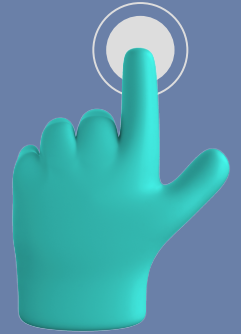
Manage discounts & promotions, permit certain discounts for certain customers, and allow individual drivers to apply promotions. Enforce minimum/maximum percentage reductions, and organise products into groups, define packaging and delivery package types.



7

7. Adoption & Integration

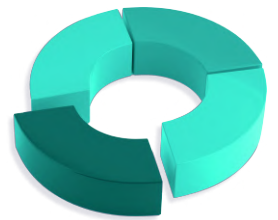
Have a complete bird's eye view of your entire business' operation, at a glance. Route Monitor gives you complete visibility; vehicle locations, loading & delivery status', site summaries and PODs all get updated in real-time.



8

8. CRM Features

Suggested orders allows our System to understand your customers, recommending the right products, at the right time, to the right customer. This proliferates up-sell opportunities & gives you better insights through extensive sales history.



9

9. Additional Features

Bar-code scanners, blue-tooth printing, mobile invoicing, full offline capabilities & a customer portal all lead to faster, improved servicing & remove the need to update customers manually and complete mundane, time-consuming tasks.



10

10. SaaS Offering

We offer monthly subscription pricing which equates to less than a coffee/day. As a SaaS - we do the IT heavy lifting so you can focus on your core business. Get your system up and running in an hour, and go live in <1 week.



UK OFFICE: +44 (0) 7340 413873
joseph@mobile-enterprise.co.uk
Mobile Enterprise Systems Ltd
27 Rosewell Court, Bath, BA1 2AQ

UAE OFFICE: +971 52 920 3250
vasudha@datainsights.ae
A3, Business Center, Dubai World
Central P.O. Box 390667, Dubai

route magic
Delivering Performance