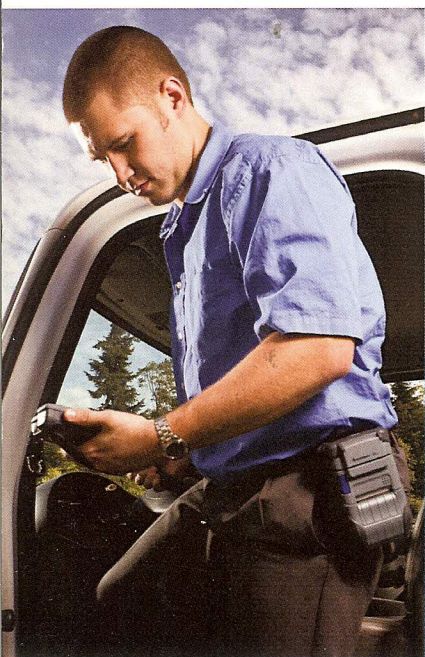


Recognised as experts in mobile data solutions



Meet your customer SLAs and gain competitive advantage

To ensure your business stays one step ahead of the competition, your workforce needs to work as efficiently as possible. Your mobile workers must be where you want, when you want and you must have complete transparency of performance.



A mobile data solution will enable you to plan and optimise routes and deliveries, streamline your processes, improve productivity and increase profitability. Our mobile data software offers modular, scalable and flexible solutions to manage your business processes, from start to finish.

As one of Europe's leading suppliers of mobile data solutions, we have successfully streamlined processes and reduced costs for some of the world's best-known distribution, mobile sales and field service companies, as well as a number of smaller, specialist businesses.

Trusted by...

Ginsters · Scanomat Ireland · P&H · Boulangeries de France
Wrights Dairies · Greencore Group · Eskimo Ice · Tayto
Carroll Cuisine · Hunt's Foodservice · JTS Snack Foods
Daioni · Simply Heavenly Foods · Doughty Cakes
Draynes Farms · Sunshine Snacks · Bilco · Rich Sauces
McColgans · The Cheeseman · Greenfield Foods
Mr Scratchings · Connacht Gold · and more

Benefits to your business

- **Increase cash flow** by reducing time between delivery and invoicing enabling earlier billing against confirmed deliveries/collections.
- **Reduce customer delivery disputes** with indisputable proof of delivery including name, signature and photographs.
- **Increase productivity and responsiveness** of your mobile workforce with an easy to use, intuitive and robust system that speeds up your delivery processes.
- **Improve delivery tracking and exception monitoring** allowing you to track delivery progress with real-time data exchanges between the mobile worker to the office.
- **Improve customer service and satisfaction** with the ability to provide customers with real-time progress information and proactively manage issues and changes to deliveries/collections.
- **Create a professional company image** by demonstrating your commitment to investment in new technologies for the benefit of your customers.
- **Reduce errors and remove manual processes** allowing reallocation of administrative resources.
- **Reduce administrative and stationery costs** by eliminating paperwork and reducing printing.
- **Reduce fuel and vehicle maintenance costs** with full route optimisation and scheduling, plus vehicle inspections and check-lists.
- **Reduce returnable equipment losses** with asset tracking and barcode scanning providing full equipment visibility to mobile workers and customers.
- **Gain greater business insight** with advanced management reporting capabilities.

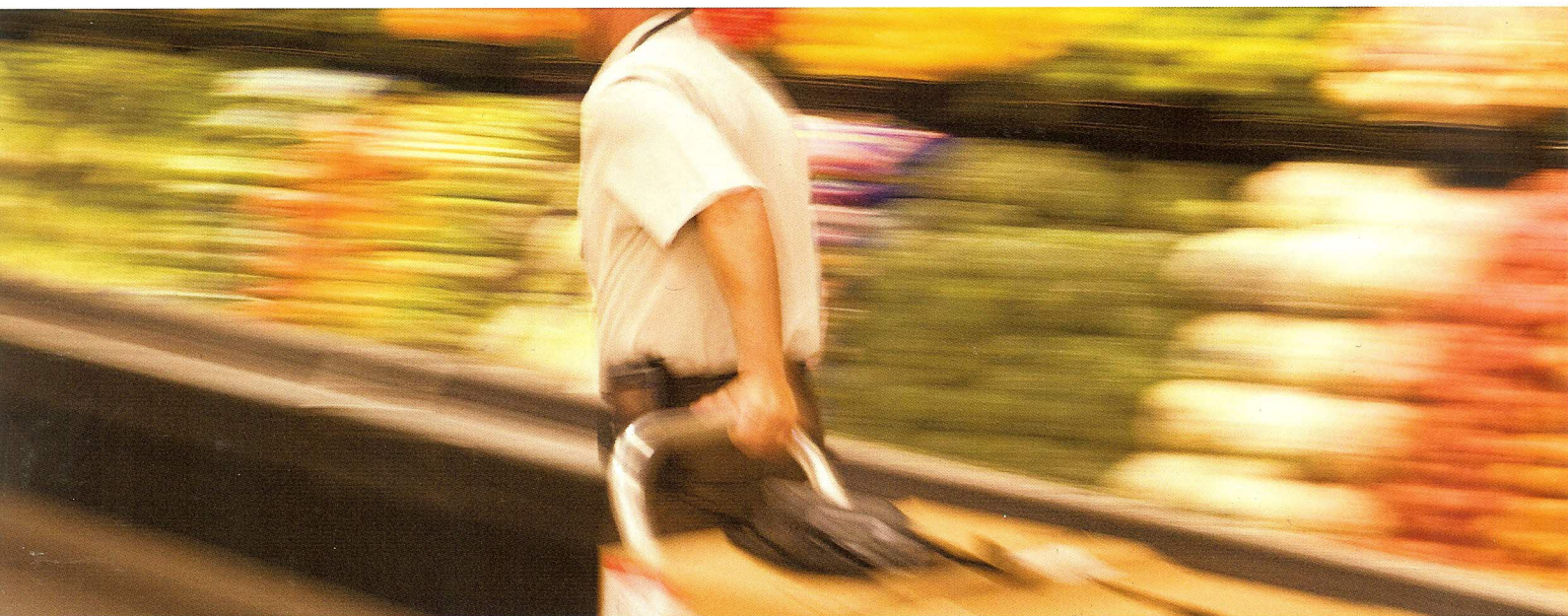
UK OFFICE (HEAD OFFICE):
T: +44 (0) 117 325 0505
E: info@mobile-enterprise.co.uk

IRELAND OFFICE:
T: +353 (0) 190 14675
E: info@mobile-enterprise.ie

Enterprise House, Westway Business Centre,
Marksbury, Bath, BA2 9HN, United Kingdom.

www.mobile-enterprise.co.uk

Recognised as experts in mobile data solutions



Empower your workforce with a tried and tested mobile data solution, designed specifically for the food and drink industry

Mobile Enterprise Systems is a global provider of a full suite of supply chain management software that streamlines the flow of inventory and information from supplier to store shelf.

Our solutions



Van Sales

Print invoice via Bluetooth · Electronic Signature Capture
Customer Specific Pricing · Returns and Uplifts · Weighted Items
Cash and Payment Reconciliation · Stock Tracking and Reconciliation
Integrated Sales Ledger · Predictive Sales Orders



Direct Store Delivery

Drop Sequence · Order Details at Product Level
Serial and Batch Tracking · Returns Processing
Electronic Driver Run Sheets · Payment Processing and Reconciliation
Live Vehicle Orders Tracking · Electronic Proof of Delivery



Electronic Proof of Delivery

EPOD Printing at Point of Delivery · EPOD Emailing
Electronic Signature Capture · Driver and Customer Signature
Time of Delivery and Geo-coordinates · Delivery and Collections
Payment Processing · Real-Time Vehicle and Order Tracking



Field Service

Job Management · Asset Management · Wireless Job Dispatch
Integrated SatNav · Proof of Service · Payments and Receipts
Job Completion



Field Sales

Customer Details · Order Capture · Customer Surveys
Customer Messages · Internal Messages · Call Schedule
Product Details · Customer Pricing/Promotions · Credit Control



Route Management

Powerful Drag-and-Drop Functionality · Special Deliveries
Load/Vehicle Capacity · Multi Day Route Scheduling · Route Plotting
Route Optimisation · Vehicle Tracking · Order Recall



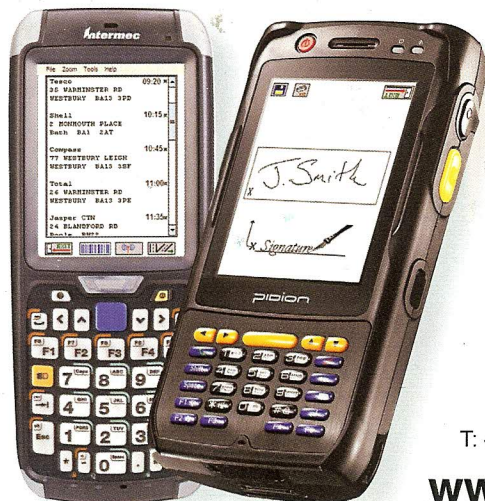
Office Process Management

Route Management · Delivery Sequence · Customer Preferences
Telesales Orders · Credit Control · Driver Alerts and Messages
Stock Management · Integrated Wave Picking · EPOD
Management Reports



Warehouse Management

Stock Movement Management · Multi-Depot Control · Kitting
Rules-Based Pick, Pack, Dispatch Management · Supplier Portal
Goods Receipting · Quality Control Management · Voice Picking
Warehouse Optimisation · Voice Picking · Slotting Management
Task Interleaving · Labour Management · RFID Compliant



T: +44 (0) 117 325 0505 E: info@mobile-enterprise.co.uk

www.mobile-enterprise.co.uk

sage

Developer