

# Easy Adoption & Usage

## Ease of Use

Forget the hassle of learning a new system so you can become fully competent. The UI allows mobile workers to pick up where they left off in no time, with a simple 6-icon main screen allowing a clear, simple view of all the app's capabilities. Sleek ERP System with modern, intuitive and standard screen designs ensure that new users can start using the system in less than a day.

Shortcuts such as bulk actions, at several steps can be incorporated to make the order processing faster and less prone to errors. Similarly Route Planner which features drag-and-drop capabilities makes planning efficient.

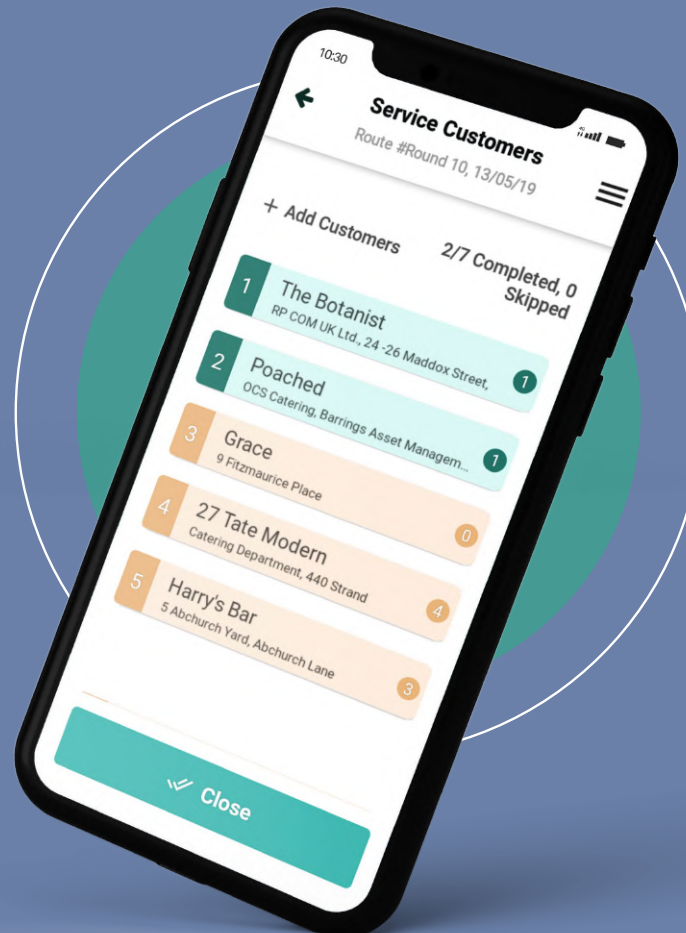
## Easy to get setup

Easily import data from previous systems, without the worry of delays or workflow disruptions whilst transitioning onto the new System. As a SaaS, there is no IT overhead needed, and the simple subscription pricing means the product can prove itself, without the need for large investments.

We can take you live in less than a week. Provide all your initial data to us in a spreadsheet, that we will validate and then import into our system with a single click.

## Customisable UI

With over 75 customisable settings to configure exactly how you want each operation to be carried out. From enforcing Vehicle Inspections to permitting the addition of new customers by drivers, the System tailors itself to the ways YOU are used to working. Through back-office you can configure things such as which all operations require approvals while in mobile app you can configure which all screens show up, and for each screen, what all capabilities are supported.



## Integration

For slightly bigger businesses, RouteMagic can even serve as an extension to their existing ERP and financial systems. It was purposed to be easily integrated through REST APIs, and integrates with standard systems such as Xero, Sage, Tally and many others. Rest be assured, If your existing system supports integration, RouteMagic can integrate with it seamlessly.



Over 100 Customers



Operating In 3 Countries



2000+ Mobile Workers Daily



Go Live In < a Week



low-cost monthly subscription

**UK OFFICE:** +44 (0) 7340 413873  
joseph@mobile-enterprise.co.uk  
Mobile Enterprise Systems Ltd  
27 Rosewell Court, Bath, BA1 2AQ

**UAE OFFICE:** +971 52 920 3250  
vasudha@datainsights.ae  
A3, Business Center, Dubai World  
Central P.O. Box 390667, Dubai

**route**magic****  
Delivering Performance

# Your Business, Your Rules

## Back-Office adjustments

RouteMagic offers over **75 settings** which can be adjusted to suit your workflow, from enforced vehicle checks to end-of-site visit surveys. This allows you to **personalise the system to grant you optimum productivity and control what your workers can and can't do**. Want to enforce vehicle checks? Your drivers must complete, sign & signature the check before continuing with their route. Other icons on the handheld will be inaccessible until they have first completed the check. **Each condition can be personal to each worker (or group of workers)**. Define re-order levels to avoid issues with insufficient stocks, enforce actions made by mobile workers, such as adding customers or taking forward orders, to pend approval from the Office before they are made official, so you know exactly what each worker can and cannot do. You can implement monthly rent charges for containers or deposit items, enforce a photographic proof-of-delivery along with many more custom configurations.



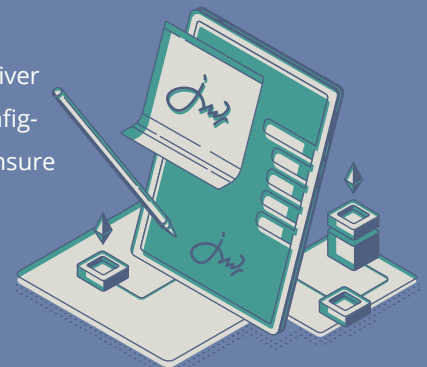
## Delivery scheduling

The ERP is capable of storing huge amounts of customer info; **which routes they're on, the type of stop, specific contact details, which drivers service them and whether they have a standing order**. Regulate driver conditions such as; **photographic evidence of deliveries, signatures, forward order and management of deposit items** can all be allocated rules for your drivers. Schedule forward orders and organise everyone's operations better, whilst ensuring no deliveries are missed or customers are dissatisfied. **Everyone stays on the same page and everyone is satisfied with the service.**

## Customer Preferences

Granting & restricting certain actions helps your customer receive the service they desire. You can **set a message alert for your driver** which will detail this as they go to service the customer on the handheld, prioritise certain orders if the customer requires products hastily, or the items have a short shelf-life. Additionally, you may want to have delivery instructions

automatically pop-up as the driver approaches a customer, or configure an -end-of-site survey to ensure doors or gates are locked.



Over 100 Customers



Operating In 3 Countries



2000+ Mobile Workers Daily



Go Live In < a Week



low-cost monthly subscription

**UK OFFICE:** +44 (0) 7340 413873  
joseph@mobile-enterprise.co.uk  
Mobile Enterprise Systems Ltd  
27 Rosewell Court, Bath, BA1 2AQ

**UAE OFFICE:** +971 52 920 3250  
vasudha@datainsights.ae  
A3, Business Center, Dubai World  
Central P.O. Box 390667, Dubai

**route**magic  
Delivering Performance

# A Subscription-Based Model

The Benefits of a monthly payment plan for your System Integrations



## Manage your Budget

Monthly payments help you plan your expenditure, and you can upgrade hardware as you expand and your van numbers & business. At a price point of less than a coffee/day/vehicle, you can get at least 10x ROI in almost no time.

## No more IT Overhead

We take care of all the IT overhead, be it setting up servers, scaling, monitoring or patching them - we do it all, so you can focus on your core business. Our support desk will ensure that you and your users have a friendly ear to answer and resolve all their queries.



## Software Updates

RouteMagic will be continuously evolving to support more capabilities and even making the current operations faster and easier. You will get the benefit of all these upgrades free of cost, as new releases will be pushed on to the servers on a timely basis.



Over 100 Customers



Operating In 3 Countries



2000+ Mobile Workers Daily



Go Live In < a Week



low-cost monthly subscription

**UK OFFICE:** +44 (0) 7340 413873  
joseph@mobile-enterprise.co.uk  
Mobile Enterprise Systems Ltd  
27 Rosewell Court, Bath, BA1 2AQ

**UAE OFFICE:** +971 52 920 3250  
vasudha@datainsights.ae  
A3, Business Center, Dubai World  
Central P.O. Box 390667, Dubai

**route**magic****  
Delivering Performance