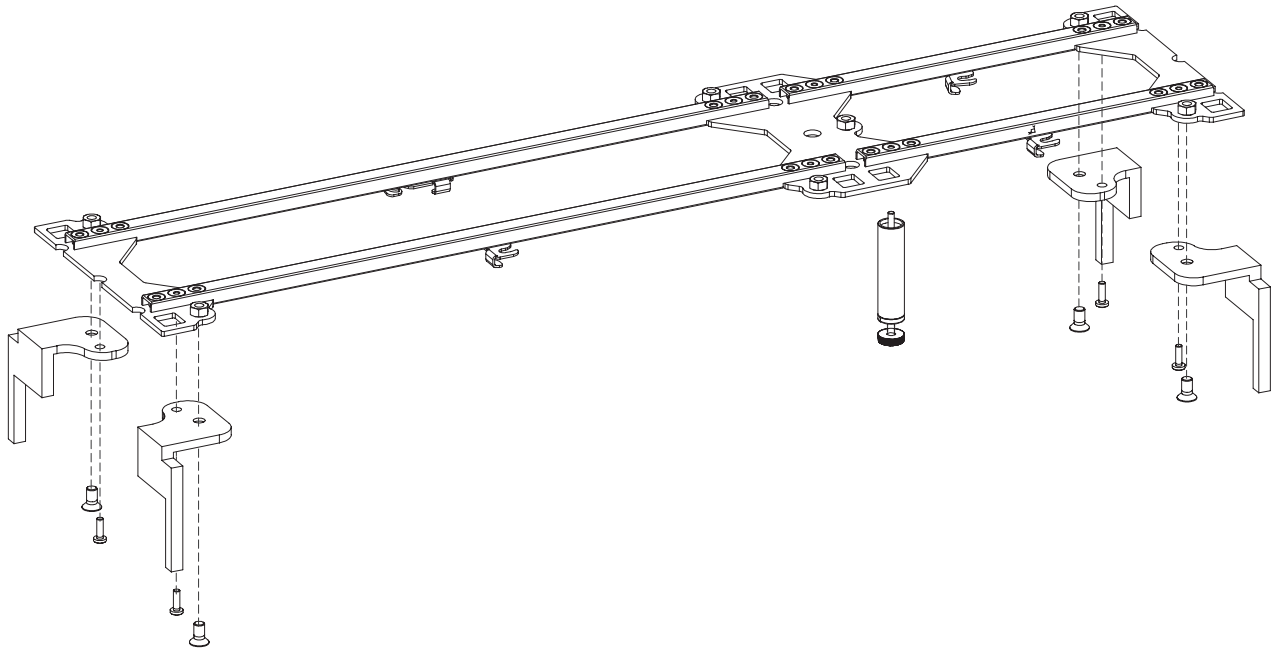


# SHYFT LEGS

FOR GRYD



You will build something similar to this.

Here are the parts you will need.

P1

x1  
or more depending  
on your configuration

Leg Platform Plate (Double-sided)  
101.173.00

P2

x2  
for each end of  
the platform

Leg Platform Plate (Single-sided)  
101.173.01

P3

x1  
or more depending  
on your configuration

Platform Profile (37cm)  
101.174.00

P4

x1  
or more depending  
on your configuration

Platform Profile (73cm)  
101.174.01

P95

x2

SHYFT Leg left

P96

x2

SHYFT Leg right

P6

Support Leg

101.179.xx, 101.481.xx101.167.xx

P10

Screw pad  
902.100.13

P11

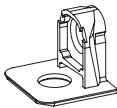
Screw distancer  
902.100.15

P12

3,5 x 25  
Truss screw 3,5 x 25mm  
902.100.12

901.100.99

P13



Metal shelf support  
901.100.04

P14



3 x 10

Screw 3 x 10mm  
901.100.05

P9



ø20

Round felt pad Ø20 mm  
902.100.18

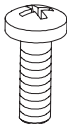
P105



ø10

Round felt pad Ø10 mm  
901.551.09

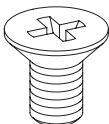
P102



6 x 20

Screw 6 x 20mm  
901.101.54

P101



10 x 20

Screw 10 x 20mm  
901.101.55

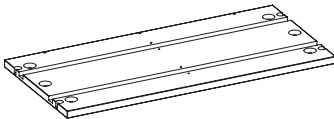
P7



8 x 14

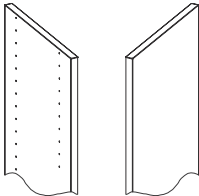
Flat head screw 8 x 14mm  
902.100.21

P25



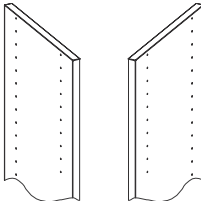
Bottom Board  
101.171-172.xx/ 101.441-442.xx

P34

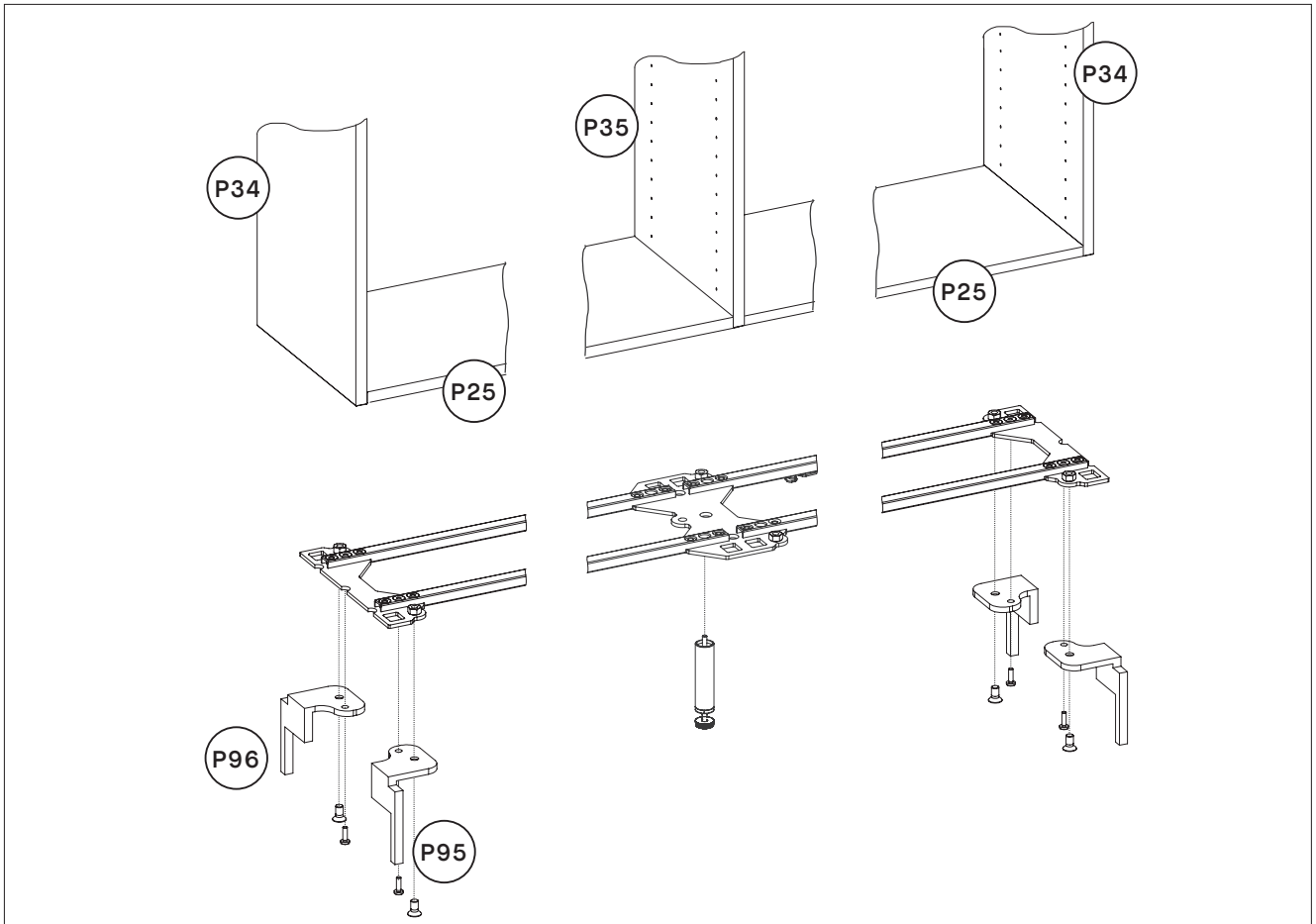


Outer Sidewalls  
101.100-105.xx/ 101.400-406.xx

P35

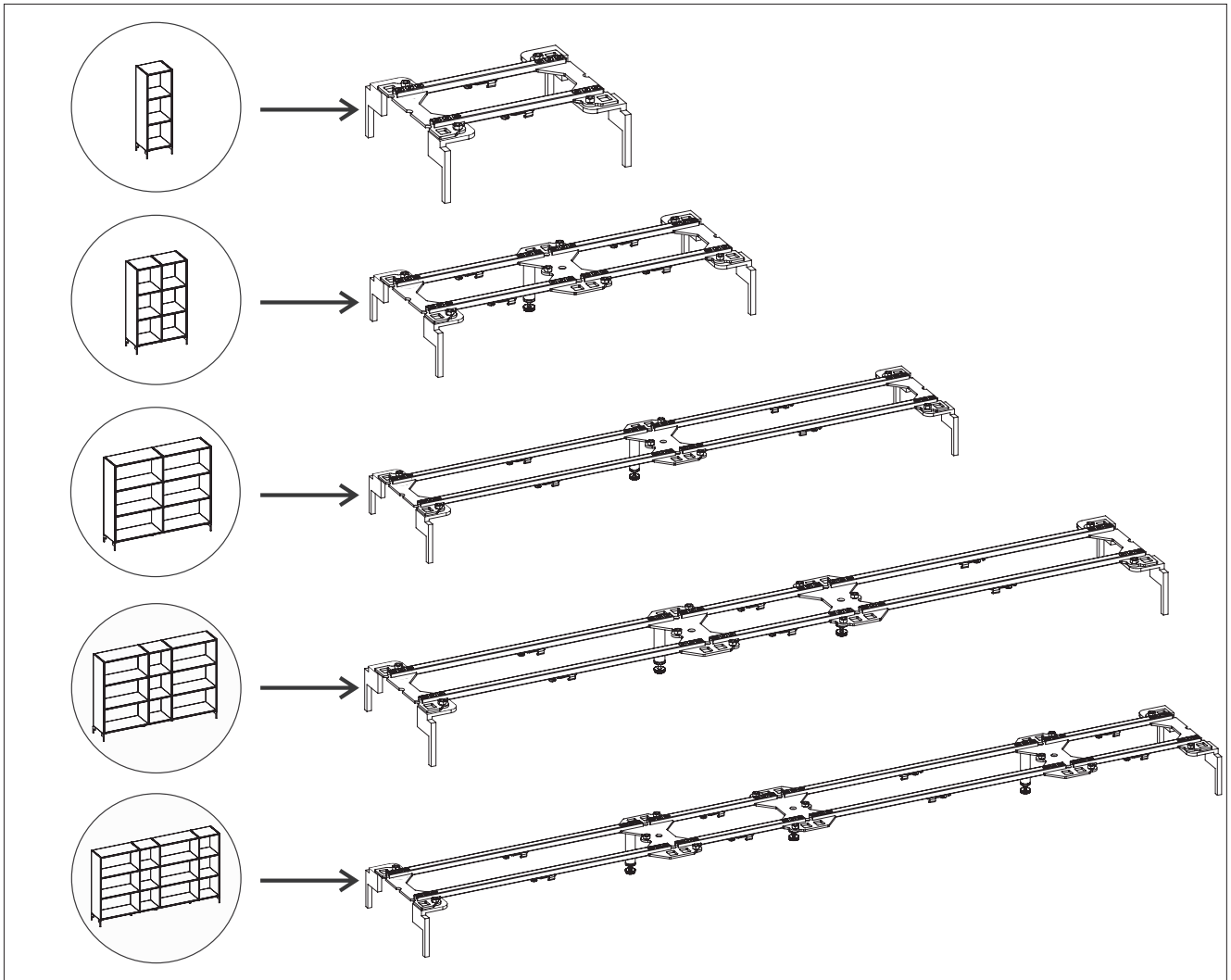


Inner Sidewalls  
101.106-111.xx/ 101.407-413.xx

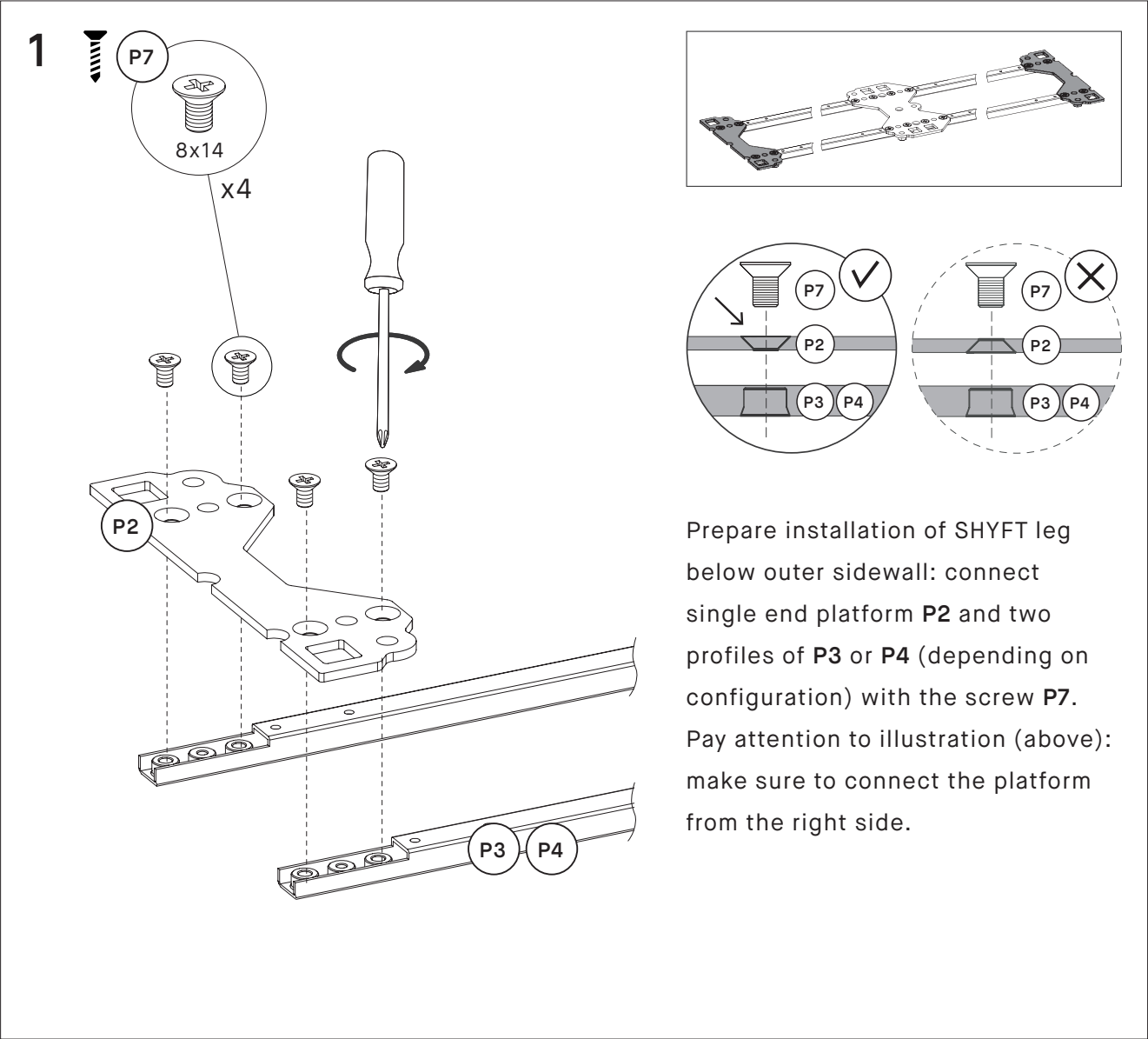


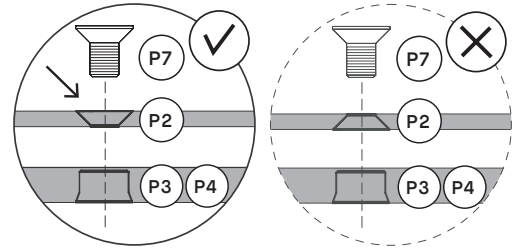
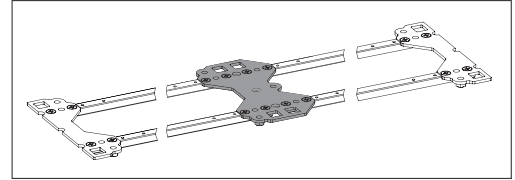
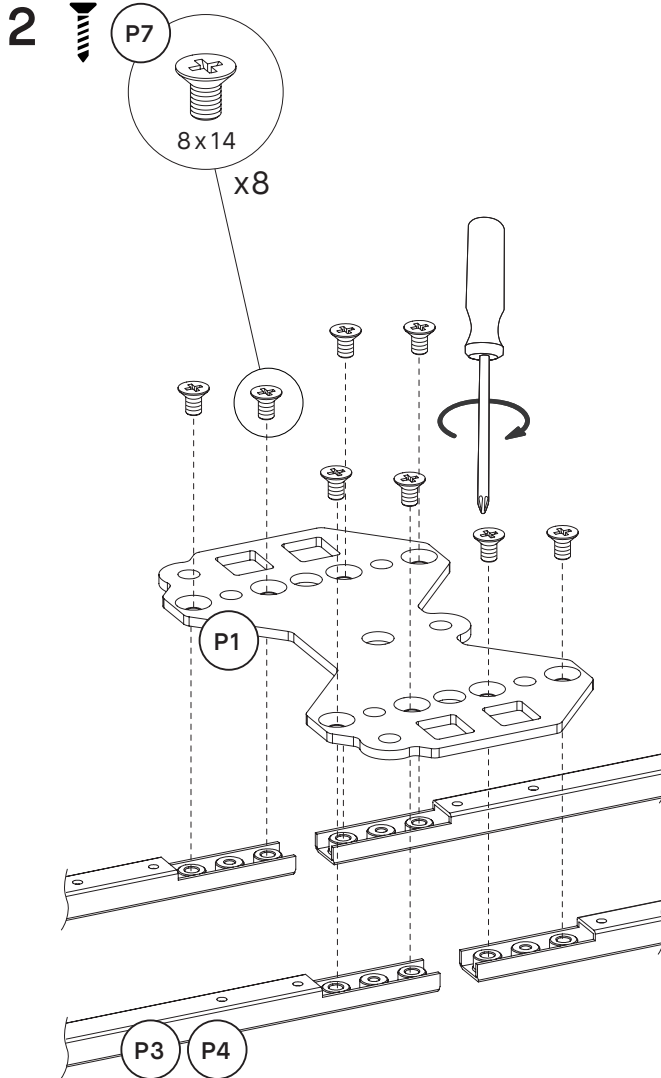
Overall: the single platforms belong below the outer sidewalls and connect with the SHYFT leg. The double platform(s) belong below the inner sidewall(s) and connect with the support leg that is needed for stability reasons.

**NOTE:** you need to add one support leg per inner sidewall. If you assemble one or more inner sidewalls without a support leg, stability can't be guaranteed.

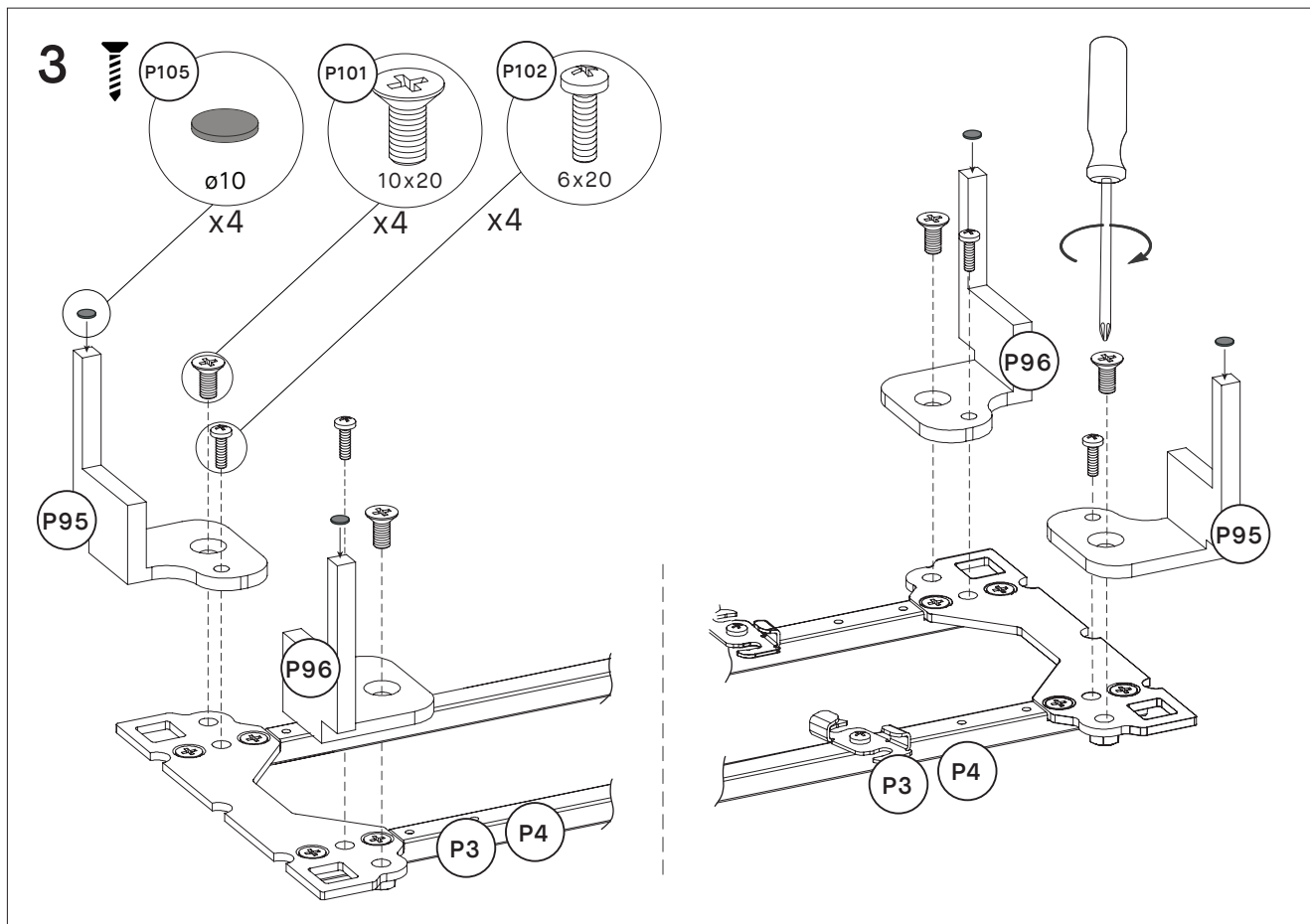


Have a look at the example constructions on the left and how the leg construction for these examples look like on the right. Find the one construction that matches your design the best and assemble the leg construction accordingly.





Prepare installation of support leg below inner sidewall: connect double platform **P1** and two profiles of **P3** or **P4** (depending on configuration) with the screw **P7**. Pay attention to illustration (above): make sure to connect the platform from the right side.



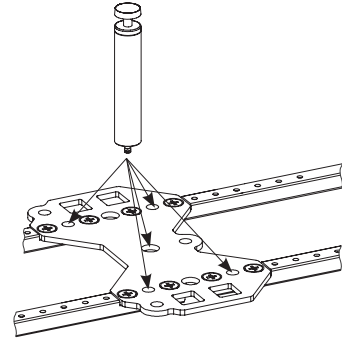
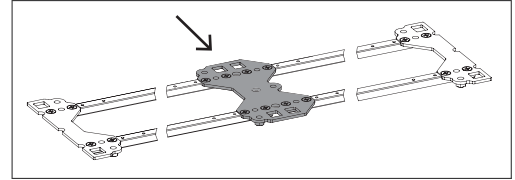
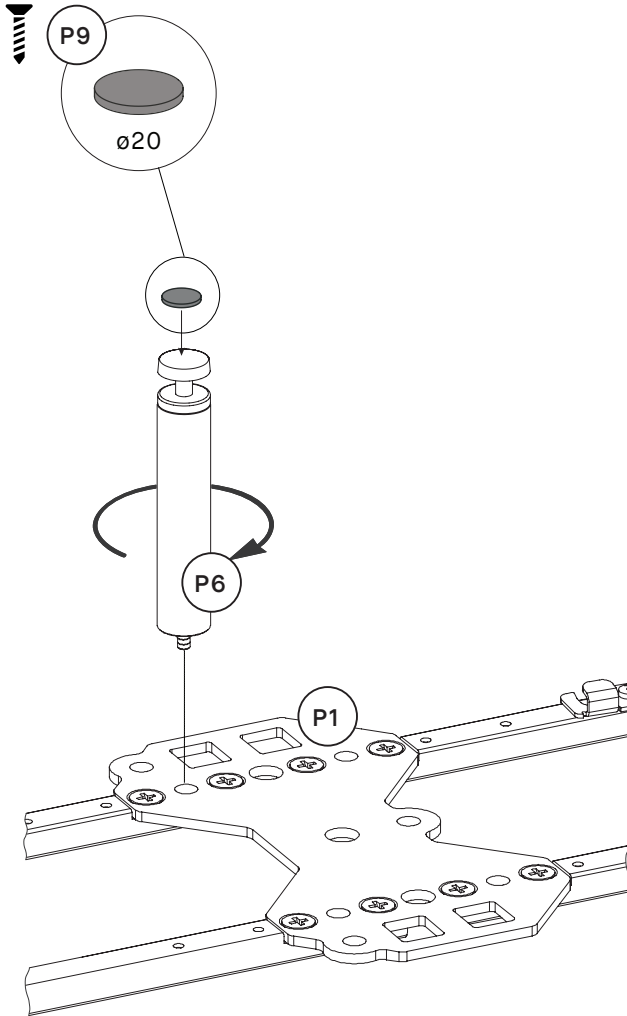
Connect SHYFT leg **P95/96** with the profiles **P3/P4** using screws **P101** (10x20 mm) and **P102** (6x20 mm).

Repeat step for all SHYFT legs (based on your configuration).

To protect your floor surface from scratches, stick the round **P105** paddings to SHYFT **P95/P96** legs.



4

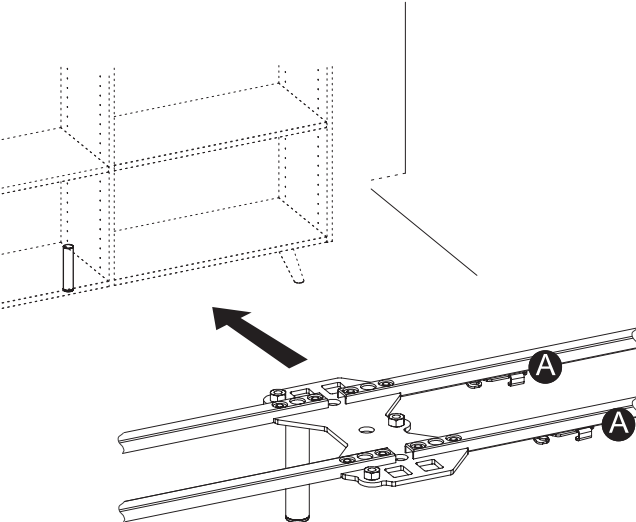


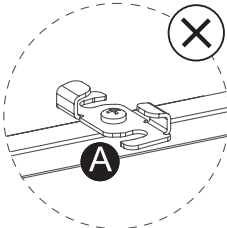
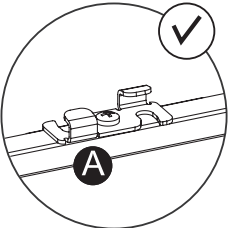
Screw support leg **P6** into the platform **P1**.  
To protect your floor surface from scratches,  
stick the paddings **P9** to support leg **P6**.

**NOTE:** Ideally the **support leg is installed at the back** of the actual product. However depending on the requirements (stability, floor level) it can be situated in the front or in the middle.

**NOTE:** Repeat step for all support legs (total number depends on the number of inner sidewalls of your configuration).

5

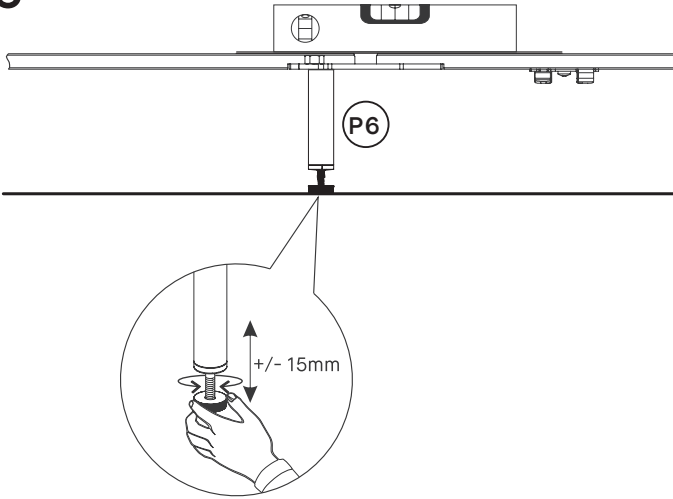


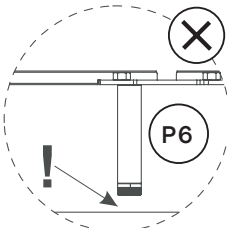
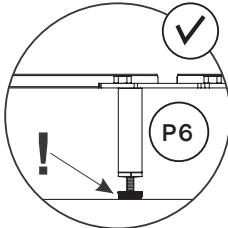


Place the leg construction at the target location of your furniture.

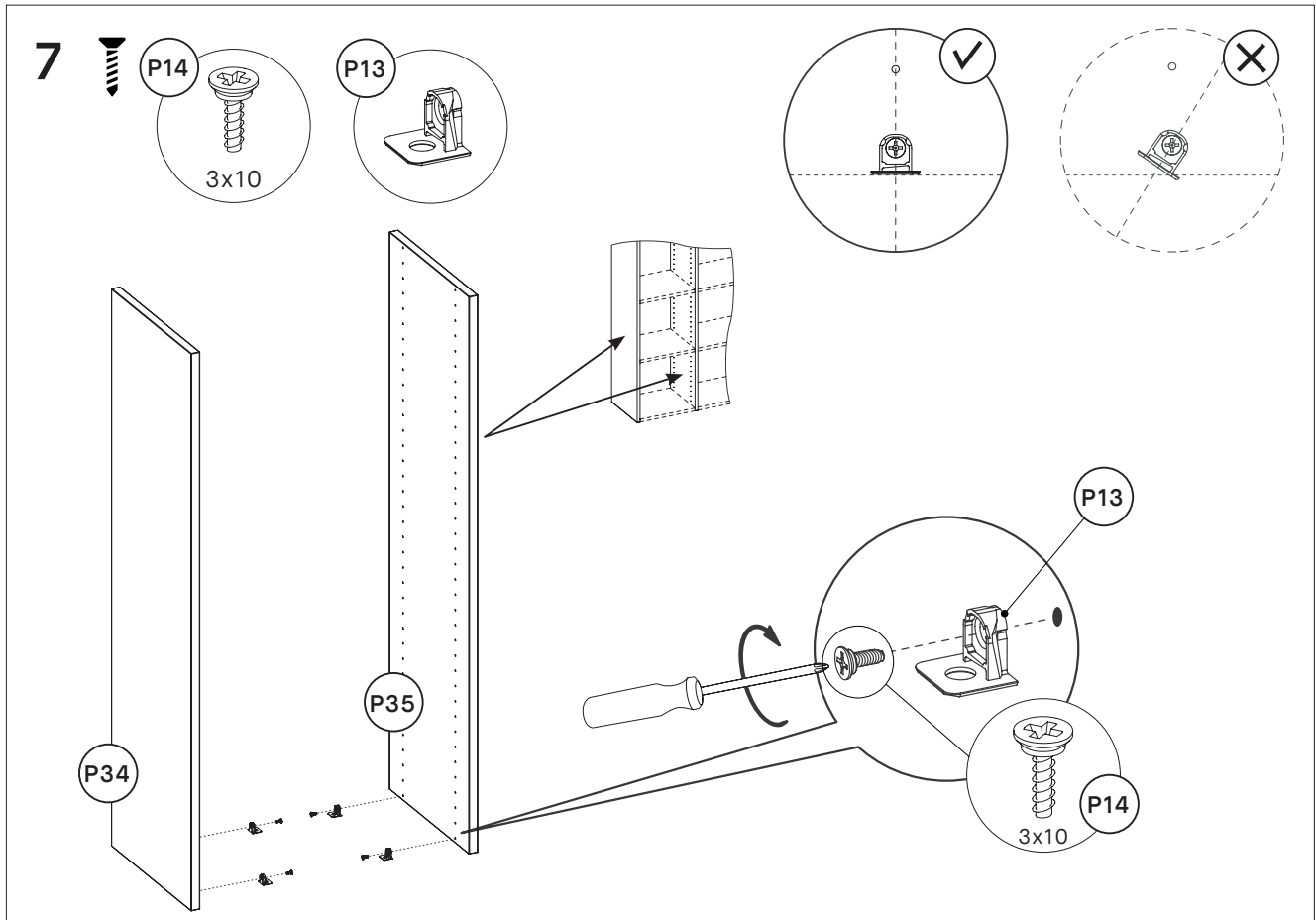
**NOTE:** Pay attention to the position of the hinge (as illustrated in A, above).

6

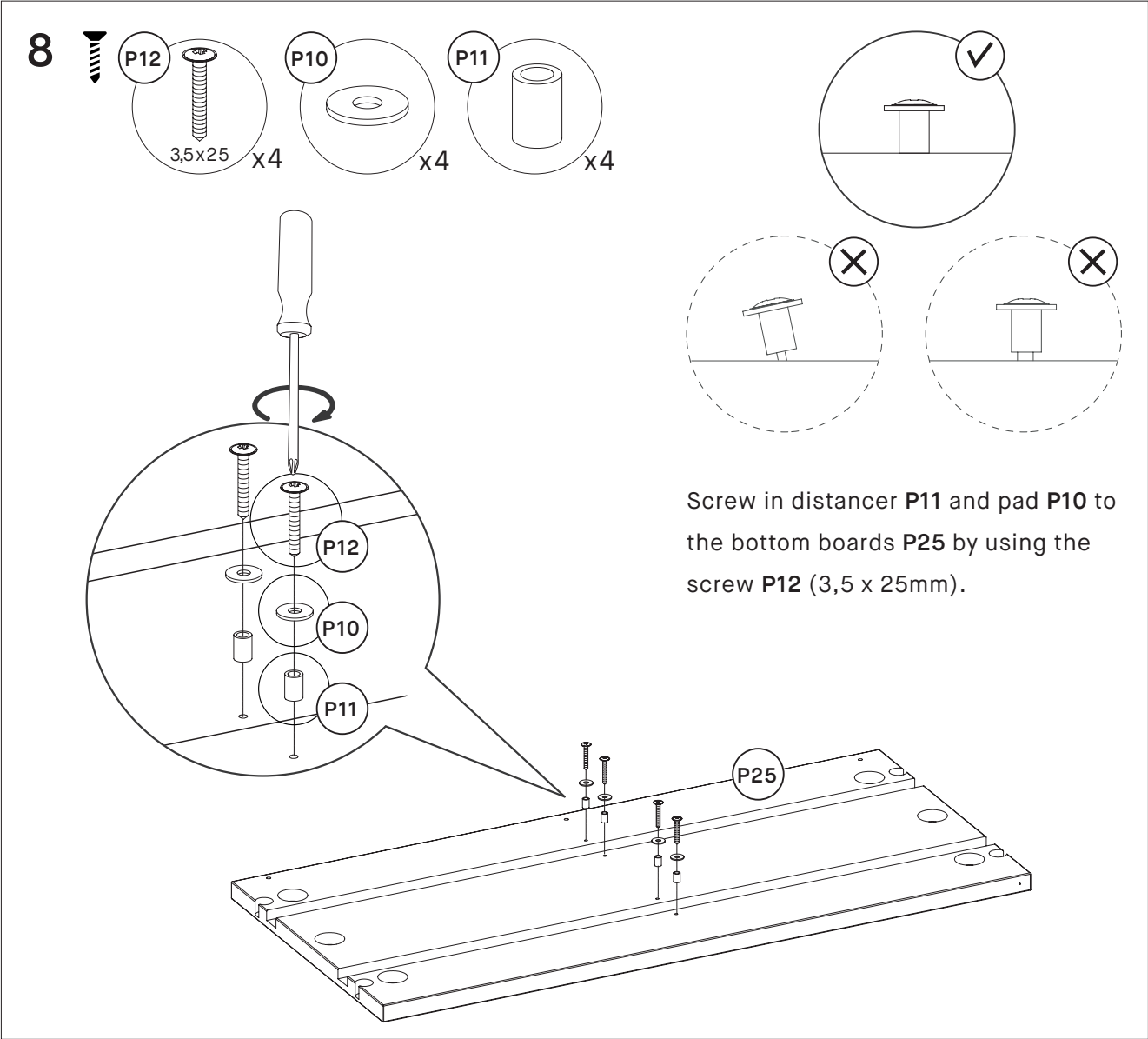




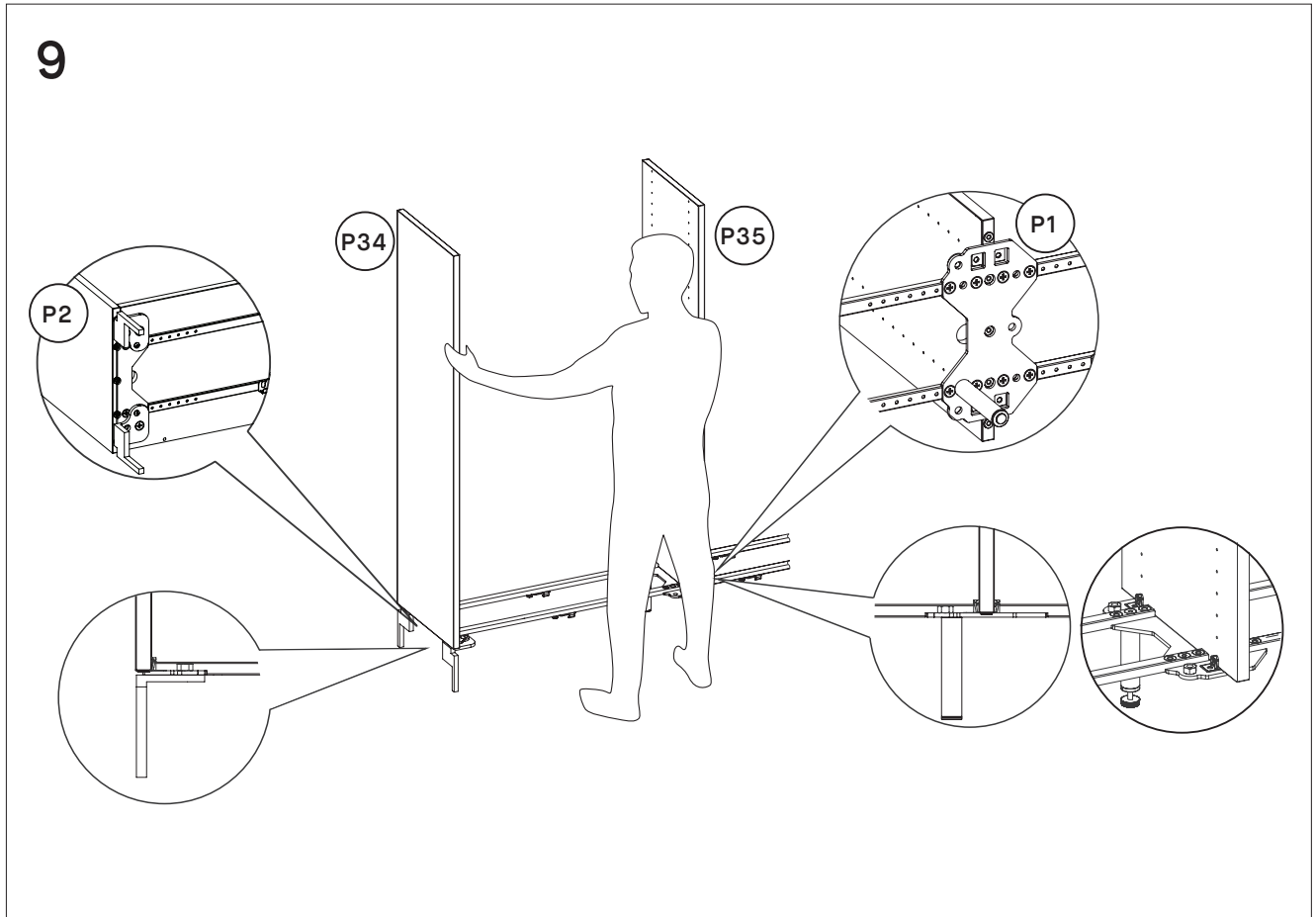
Level the construction horizontally by adjusting the support leg(s) as shown above. **This step is particularly important as it prevents the construction from bending.**



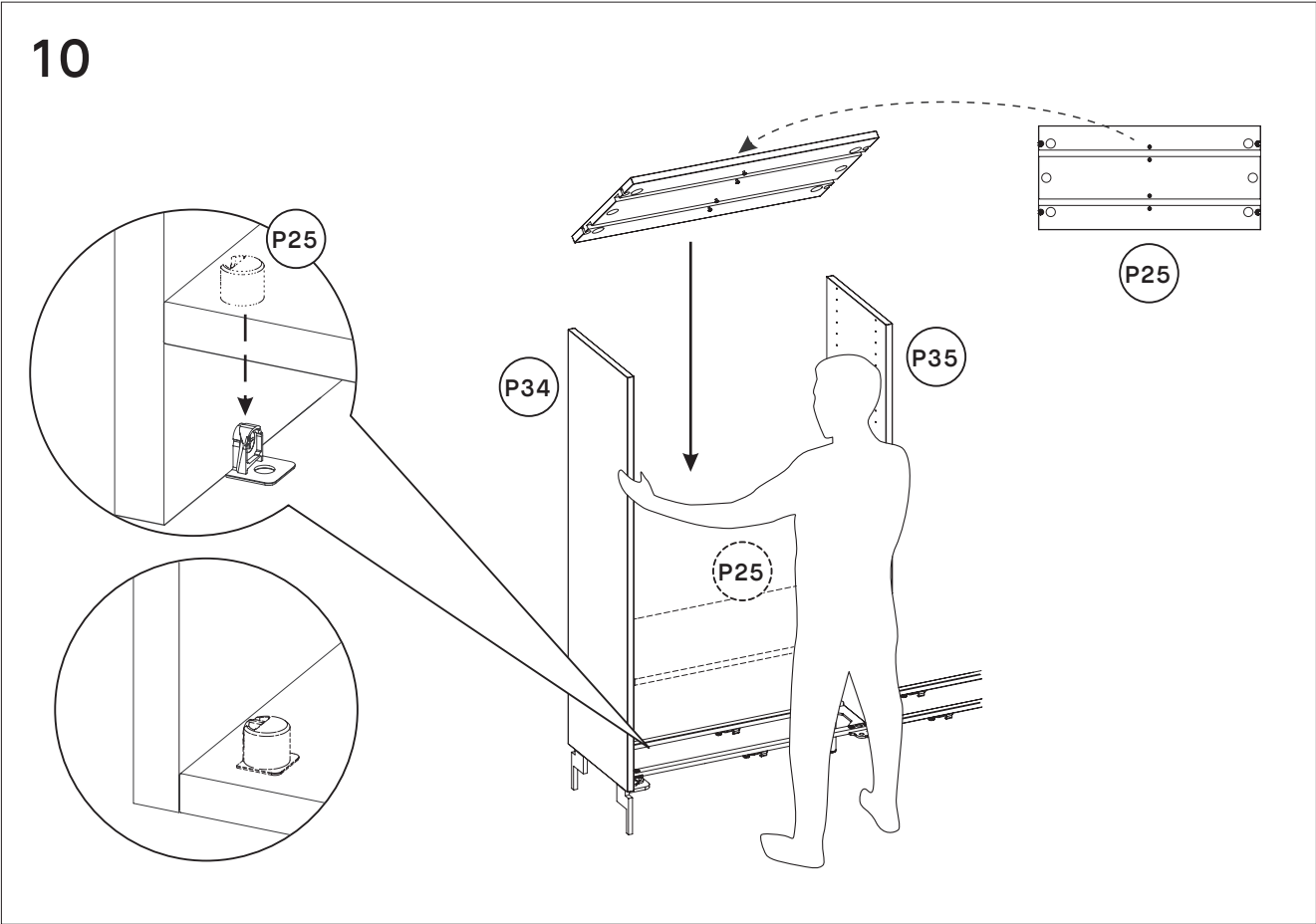
The metal shelf supports (**P13**) are there to hold the bottom boards. Screw the supports into all sidewalls as shown above (using screw **P14**). Please check your configuration to figure out where to screw in the support. You need to use them wherever you placed a board. Please refer to the “Don’t forget to measure” tip from the “Introduction” chapter on page 10 for details on how to position the metal shelf supports correctly.



9

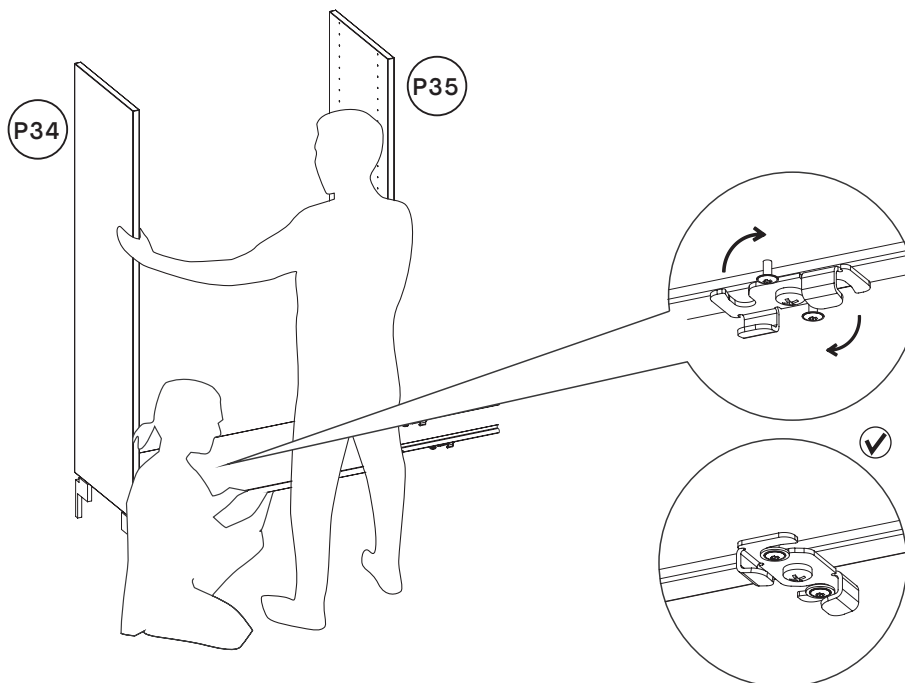


Now stick the first two sidewalls into their platform: the outer sidewalls go into the end of the single end platform **P2** and the inner sidewall in the middle of the double platform **P1**.



Place bottom boards **P25** on the platform by joining it to the sidewalls **P34/P35** with additional help.

## 11

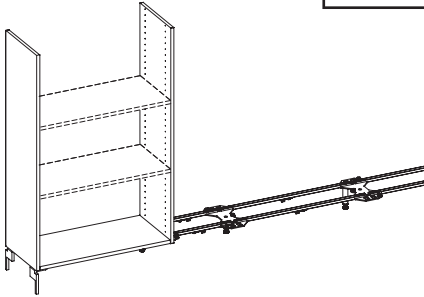


Screw in the sidewalls **P34/P35** to the bottom boards and turn the lock underneath the bottom board to connect the rails with the board. You should hear a 'click' sound once the lock is in its final position.

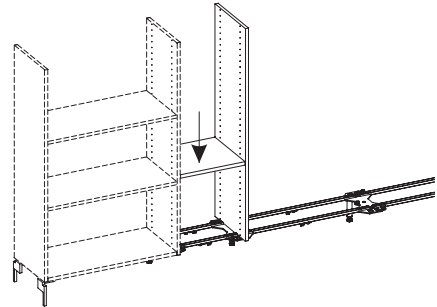
12



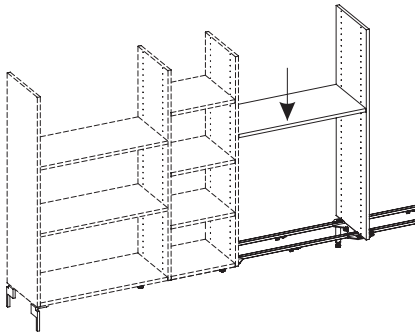
1



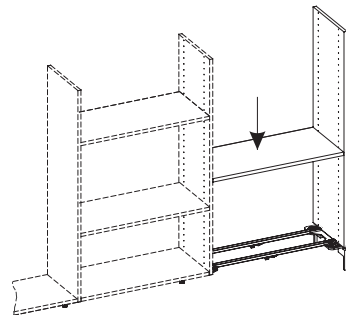
2



3



4



**NOTE:** Step 9 to 11 go together and have to be performed multiple times if your configuration requires it (depending on the number of sidewalls you have ordered). Please connect two sidewalls on the left side of your product with their platform (step 9), mount the bottom board in the middle of them (step 10) and finally lock the bottom platform with the rails (step 11). Repeat steps 9 to 11 by adding sidewalls one at a time, until you reach the outer sidewall on the right-hand side of your product.