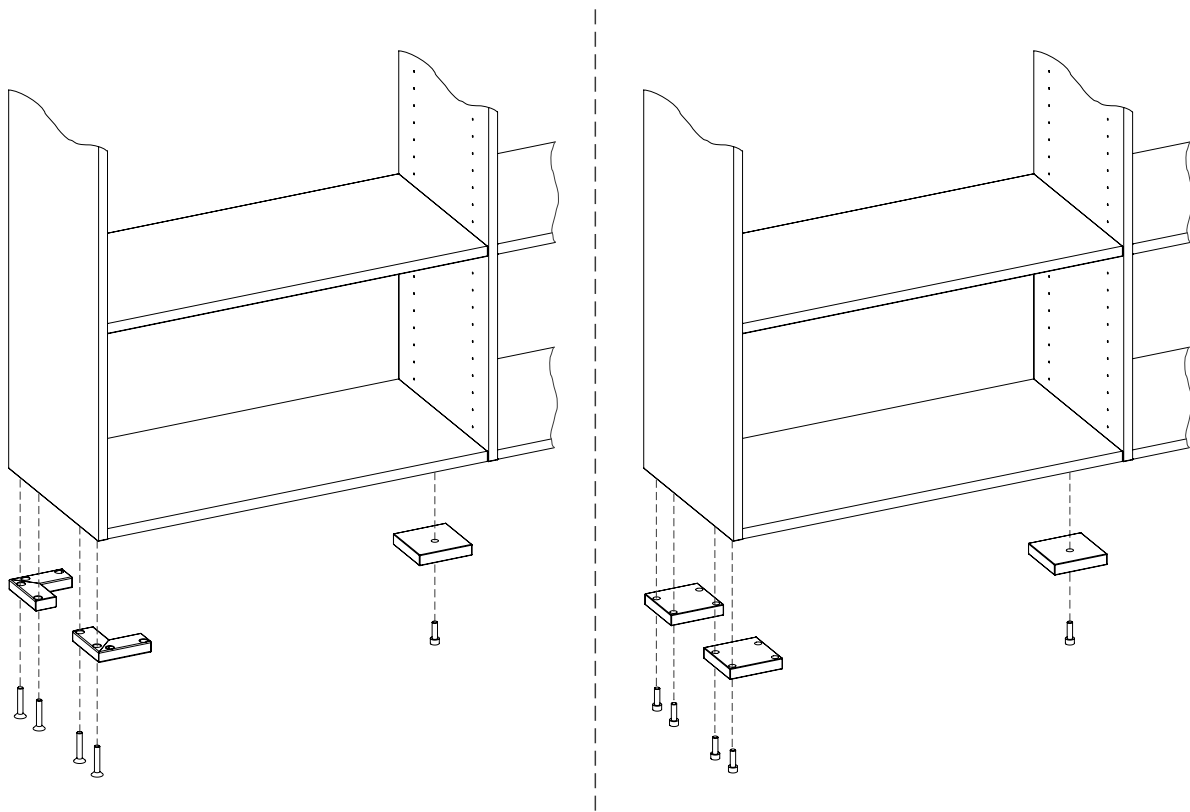


CLASSYC FÜSSE

FÜR GRYD



Dein Möbelstück wird ähnlich aussehen wie dieses.

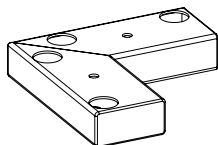
Diese Teile brauchst du:

P20



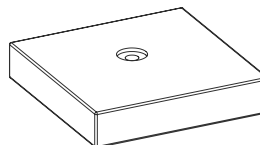
Rechteckiger Filzgleiter
902.100.19

P27



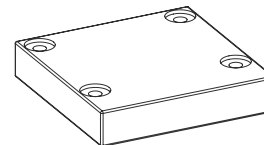
CLASSYC Fuß (Metall)
101.169.xx

P28



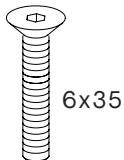
CLASSYC Stützfuß (natur)
101.170.00

P33



CLASSYC Fuß
101.168.xx/101.479.xx

P29



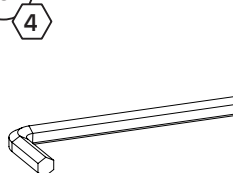
Schraube 6 x 35 mm
902.100.34

P30



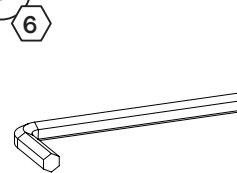
Schraube 6 x 20 mm
902.100.25

P31



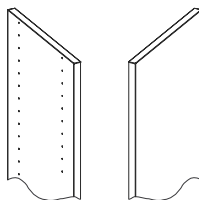
Inbusschlüssel Größe 4
901.300.01

P32



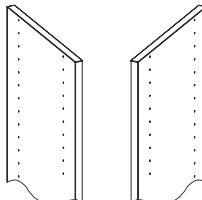
Inbusschlüssel Größe 6
901.300.02

P34



Seitenwände außen
101.400-406.xx

P35



Seitenwände innen
101.407-413.xx

