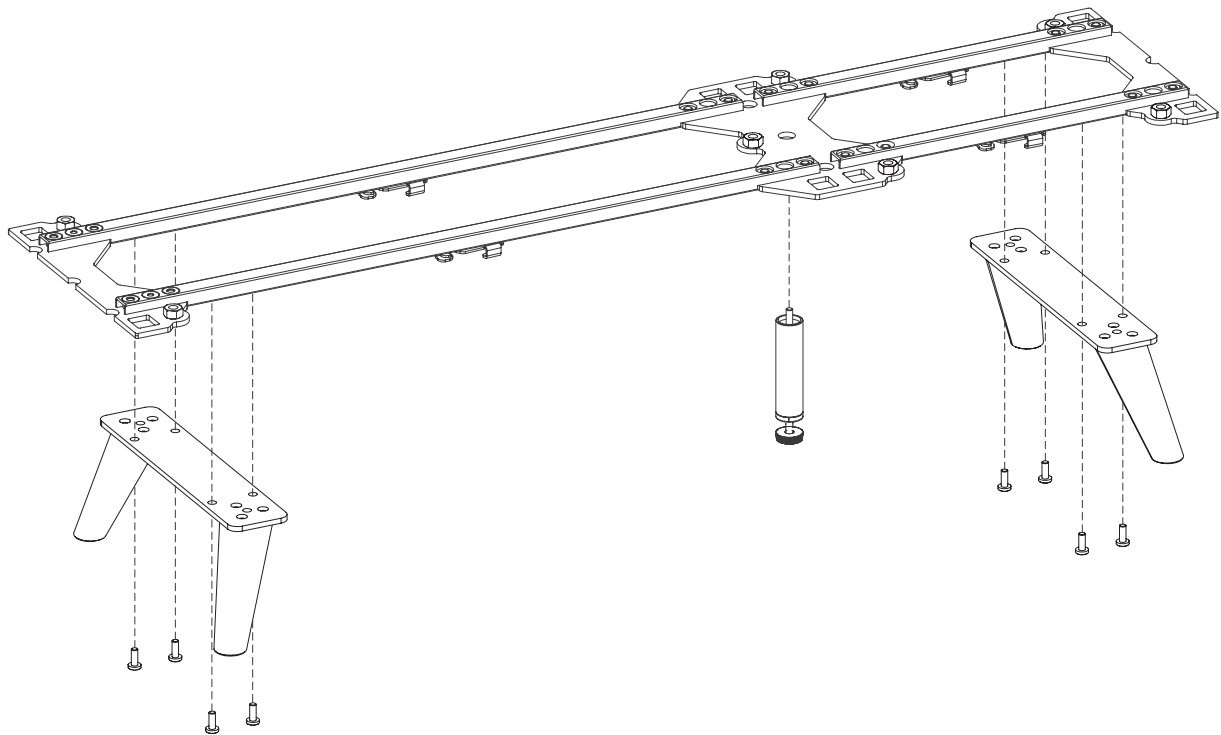


# NORDYC LEGS

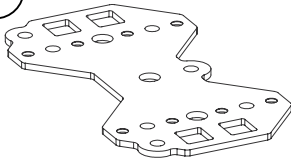
FOR GRYD



You will build something similar to this.

Here are the parts you will need.

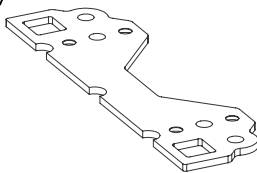
P1



x1  
or more depending  
on your configuration

Leg Platform Plate (Double-sided)  
101.173.00

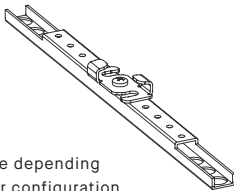
P2



x2  
for each end of  
the platform

Leg Platform Plate (Single-sided)  
101.173.01

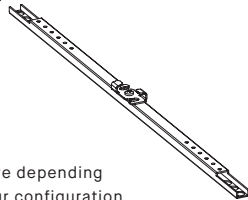
P3



x1  
or more depending  
on your configuration

Platform Profile (37 cm)  
101.174.00

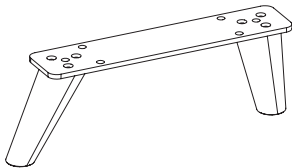
P4



x1  
or more depending  
on your configuration

Platform Profile (73 cm)  
101.174.01

P5



NORDYC Legs  
101.165.00-19 (34 cm)  
101.165.20-39 (47 cm)

P6



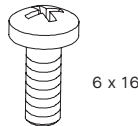
Support Leg  
101.167.xx

P7



Flat head screw 8 x 14 mm  
902.100.21

P8



Pan head screw 6 x 16 mm  
902.100.16

P9



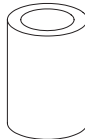
Round felt pad  
902.100.18

P10



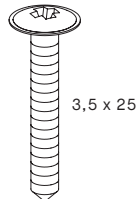
Screw pad  
901.100.13

P11



Screw distance  
901.100.15  
901.100.99

P12



Truss screw 3,5 x 25 mm  
901.100.12

P13



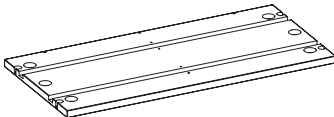
Tab support  
901.100.04

P14



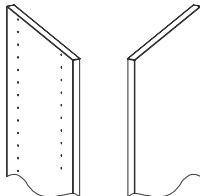
Screw Varianta 3 x 10 mm  
901.100.05

P25



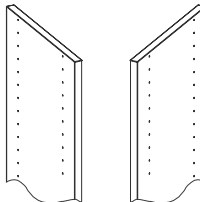
Bottom Board  
101.171.xx, 101.172.xx

P29

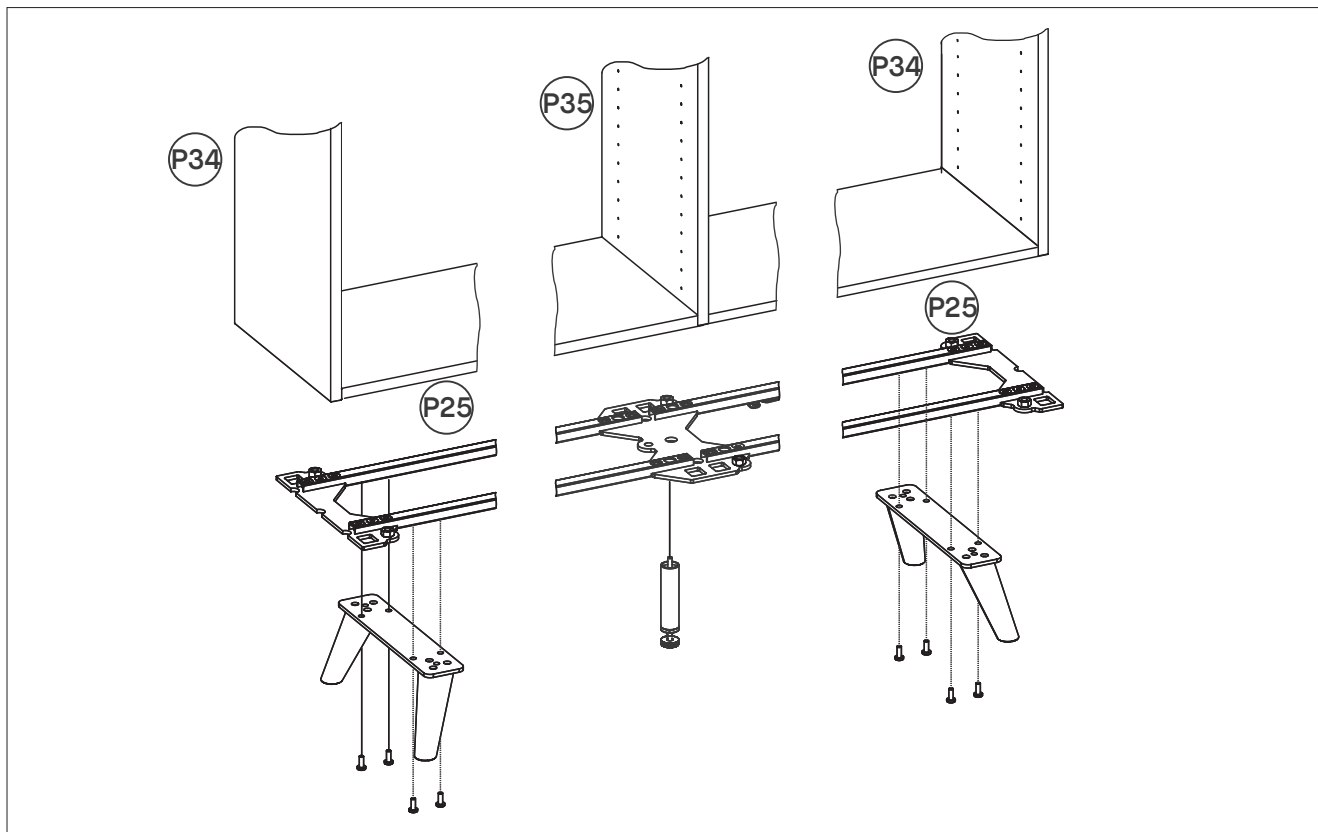


Outer Sidewalls  
101.100.xx, 101.101.xx  
101.102.xx, 101.103.xx  
101.104.xx, 101.105.xx

P30

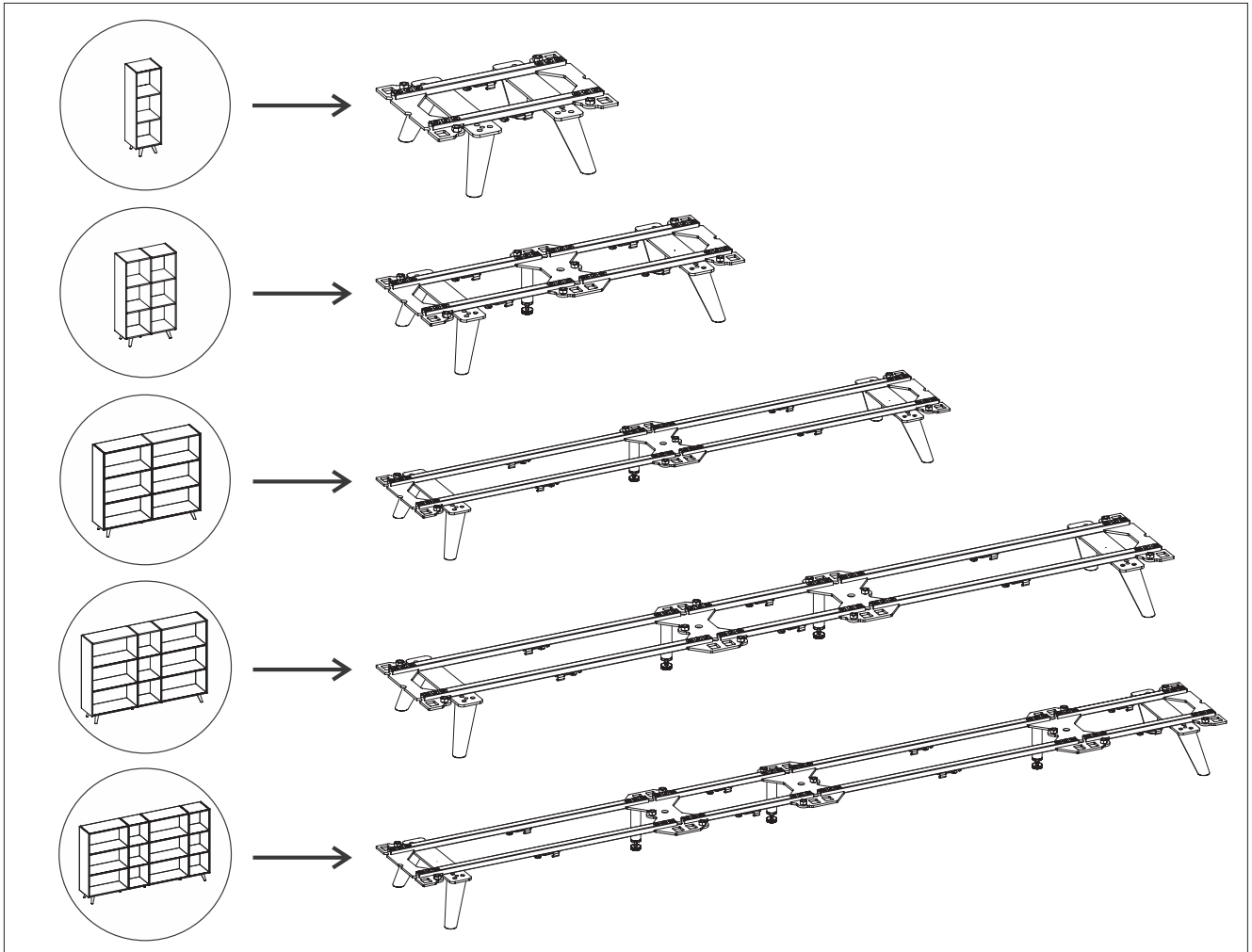


Inner Sidewalls  
101.106.xx, 101.107.xx  
101.108.xx, 101.109.xx  
101.110.xx, 101.111.xx



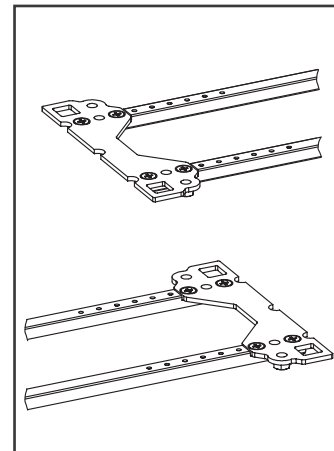
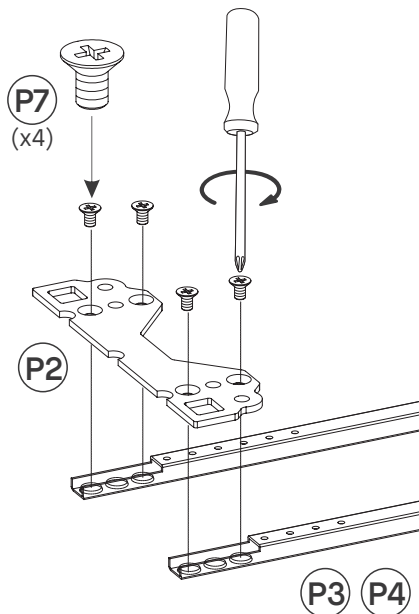
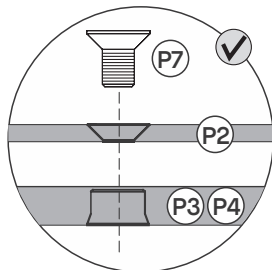
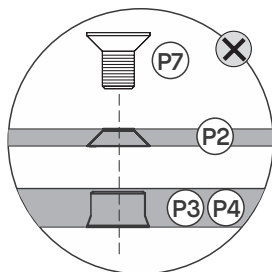
Overall: the single platforms belong below the outer sidewalls and connect with the NORDYC leg. The double platform(s) belong below the inner sidewall(s) and connect with the support leg that is needed for stability reasons.

**NOTE:** you need to add one support leg per inner sidewall. In case you assemble one or more inner sidewalls without a support leg, stability can't be guaranteed.



Have a look at the example constructions on the left and how the leg construction for these examples look like on the right. Find the one construction that matches your design the best and assemble the leg construction accordingly.

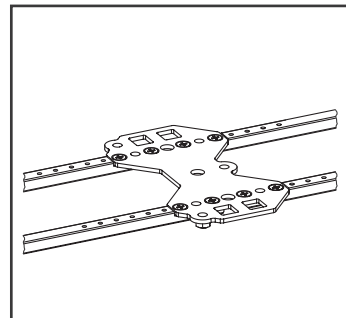
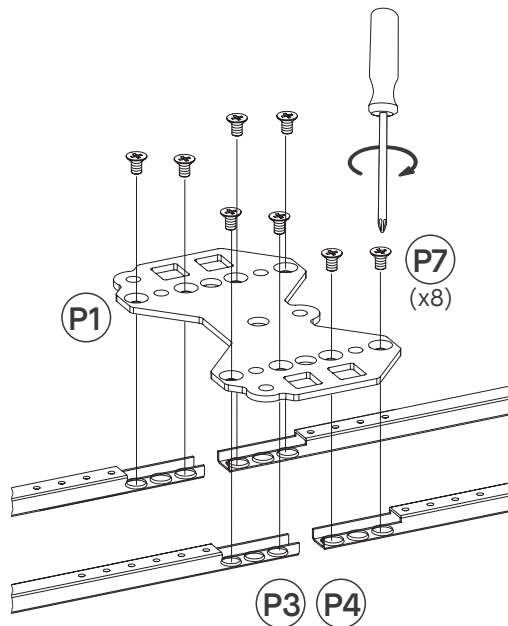
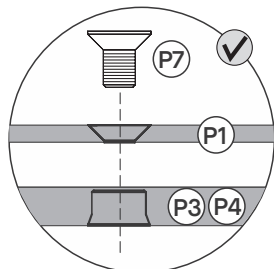
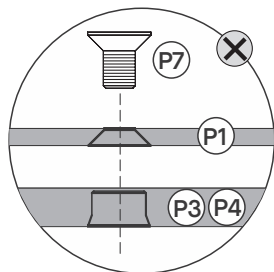
1



Prepare installment of NORDYC leg below outer sidewall: connect single end platform P2 and two profiles of P3 or P4 (depending on configuration) with the screw P7.

Pay attention to illustration (left): make sure to connect the platform from the right side.

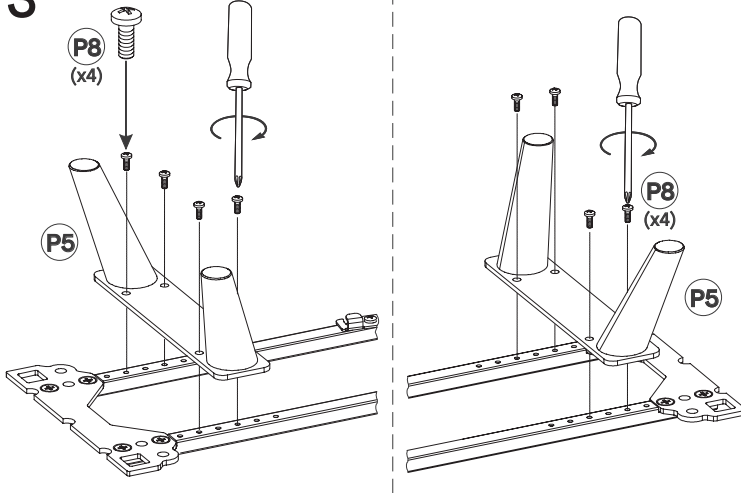
2



Prepare installment of support leg below inner sidewall: connect double platform P1 and two profiles of P3 or P4 (depending on configuration) with the screw P7.

Pay attention to illustration (left): make sure to connect the platform from the right side.

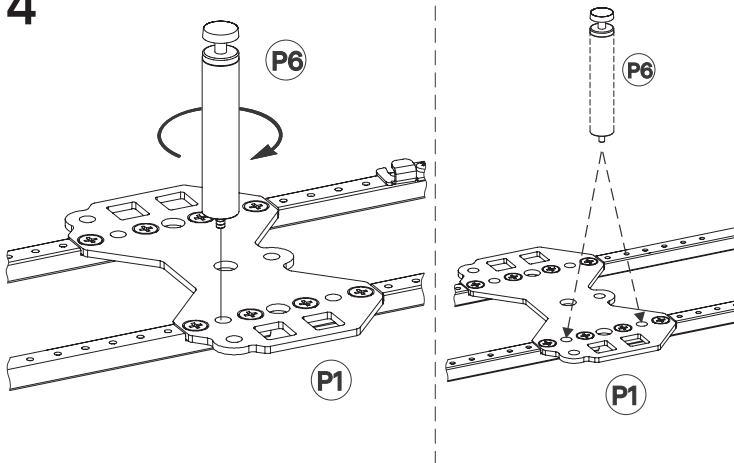
3



Connect NORDYC leg P5 with the profiles P3/ P4 by using screw P8 (6x16mm).

**NOTE:** Repeat step for all NORDYC legs (based on your configuration)

4



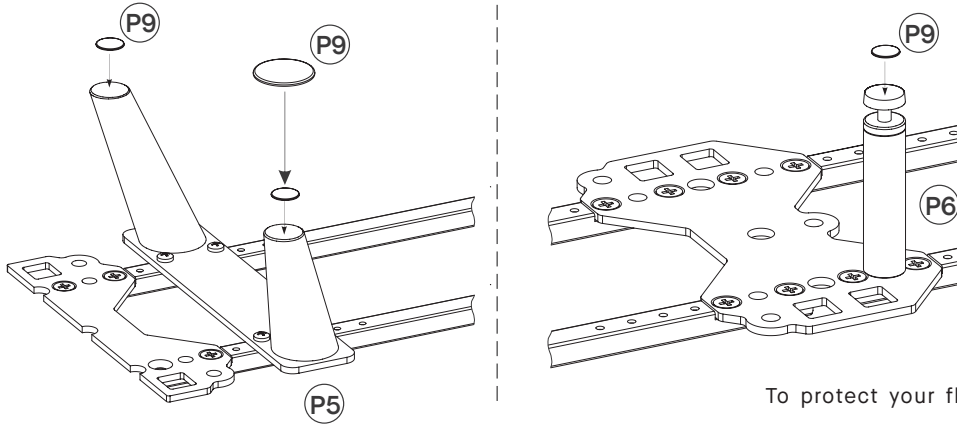
Screw support leg P6 into the platform P1. As you can see on the right, you have two options.

**NOTE:** The support leg needs to be installed at the back of the actual product, not at the front!

**NOTE:** Repeat step for all support legs (total number depends on the number of inner sidewalls of your configuration)

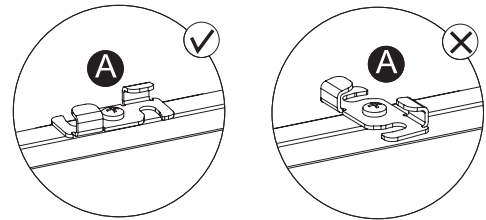
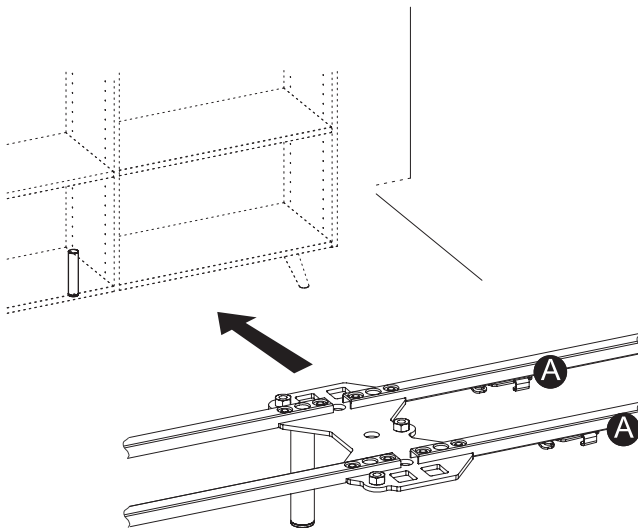


5



To protect your floor surface from scratches, stick the paddings P9 to NORDYC (P5) and support leg P6.

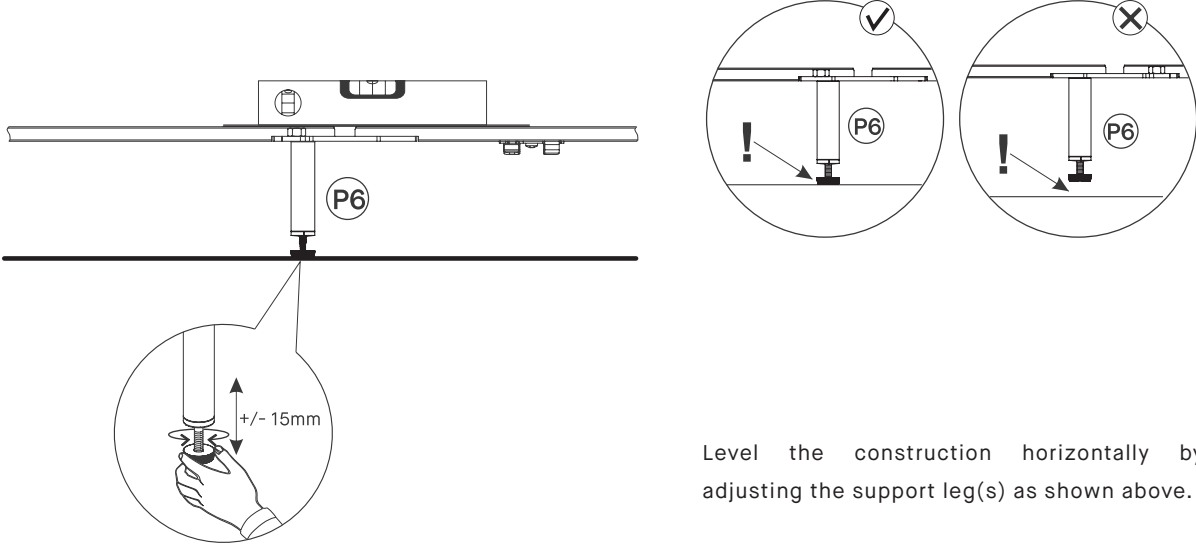
6



Place the leg construction at the target location of your furniture. Pay attention to the location of the support leg (at the back, not at the front).

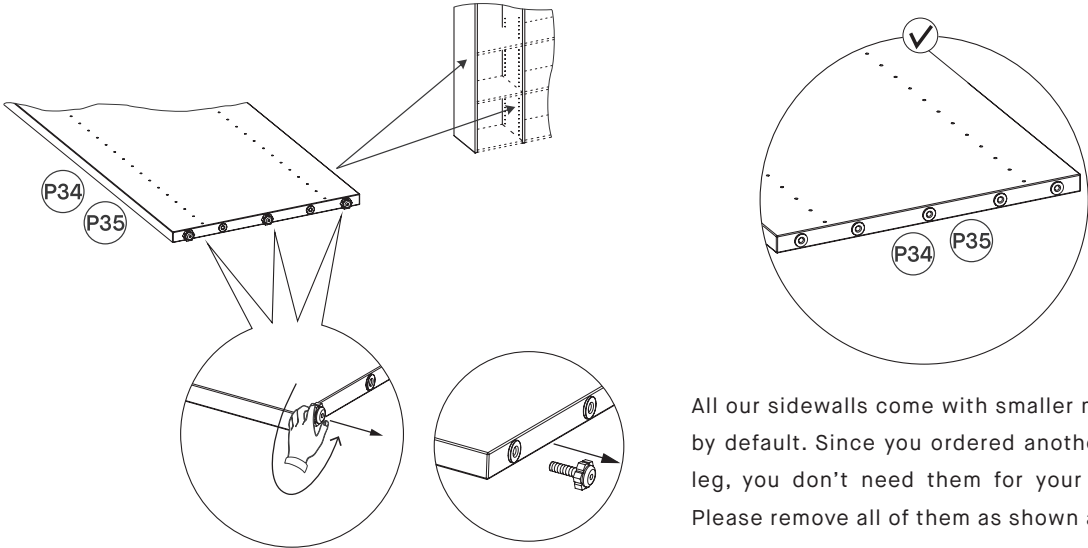
**NOTE:** Pay attention to the position of the hinge (as illustrated in A on the right).

7



Level the construction horizontally by adjusting the support leg(s) as shown above.

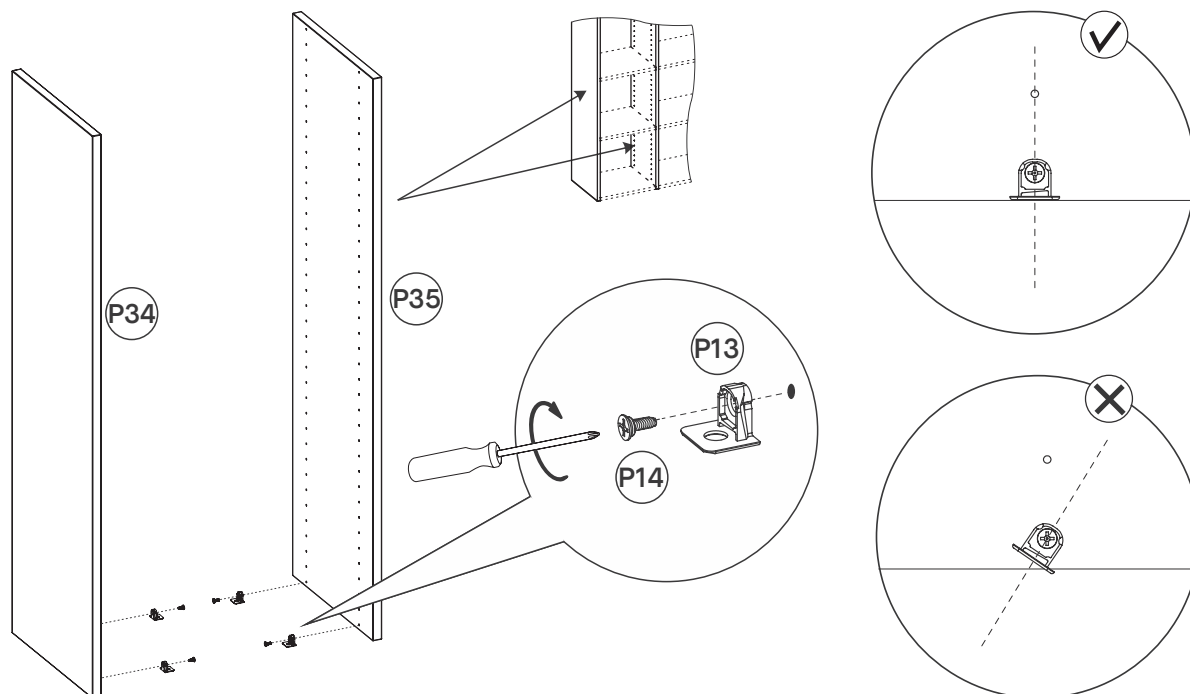
8



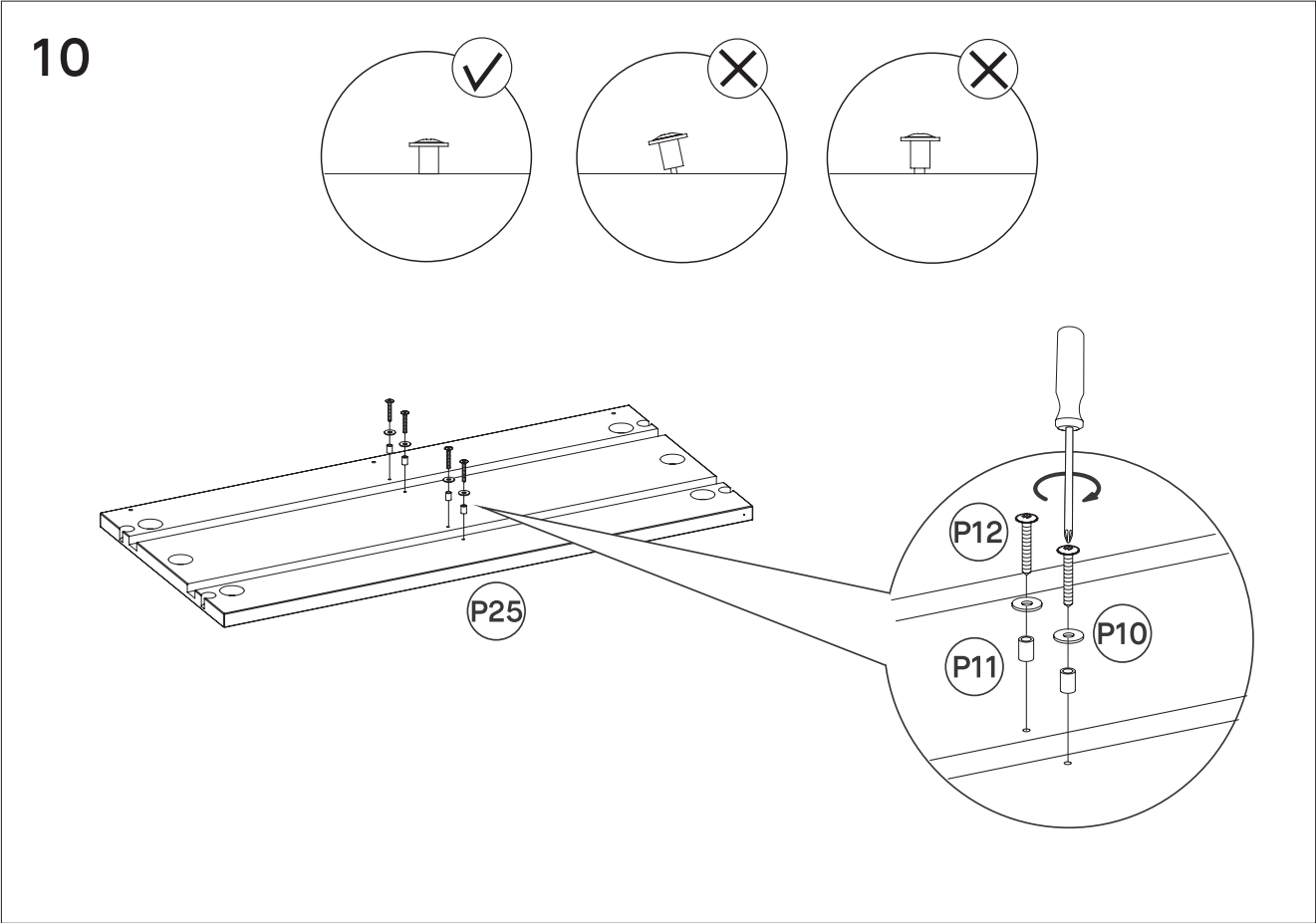
All our sidewalls come with smaller metal legs by default. Since you ordered another type of leg, you don't need them for your furniture. Please remove all of them as shown above.

10 NORDYC Legs

9

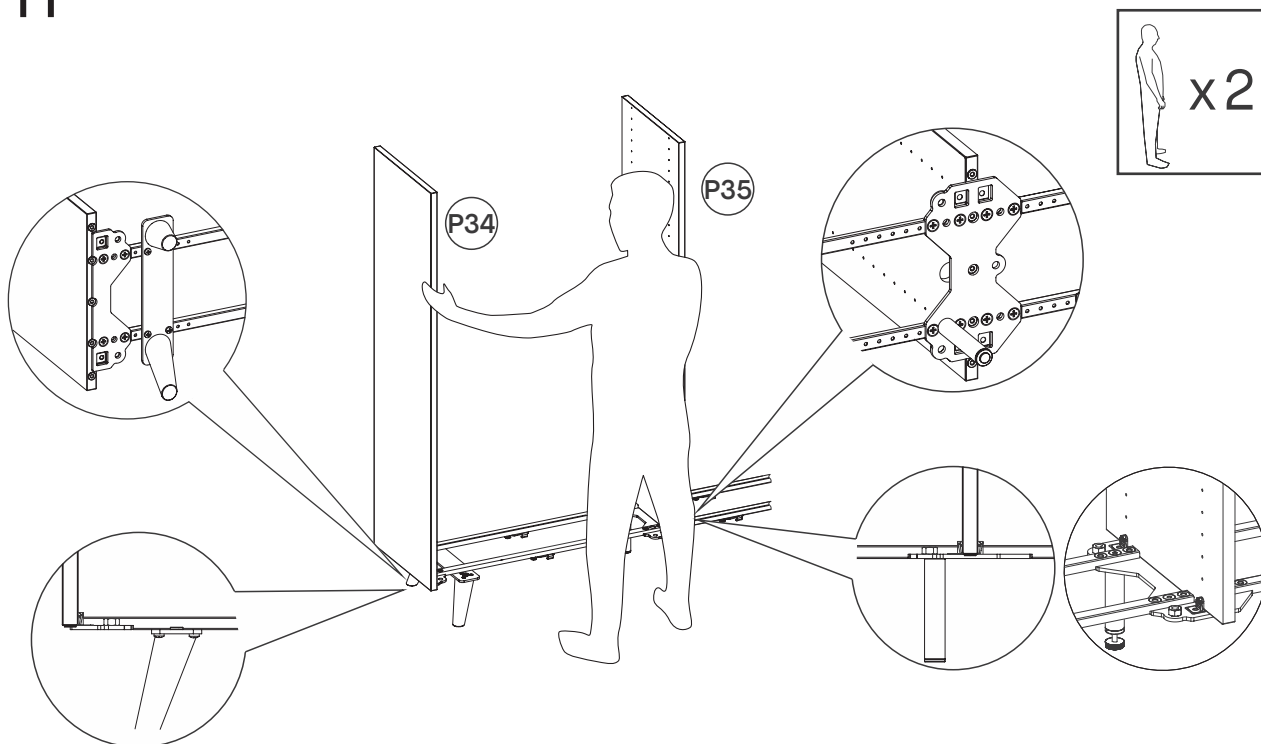


The connectors tabs P13 are there to hold the bottom boards. Screw them into all sidewalls as shown above (using screw P14).

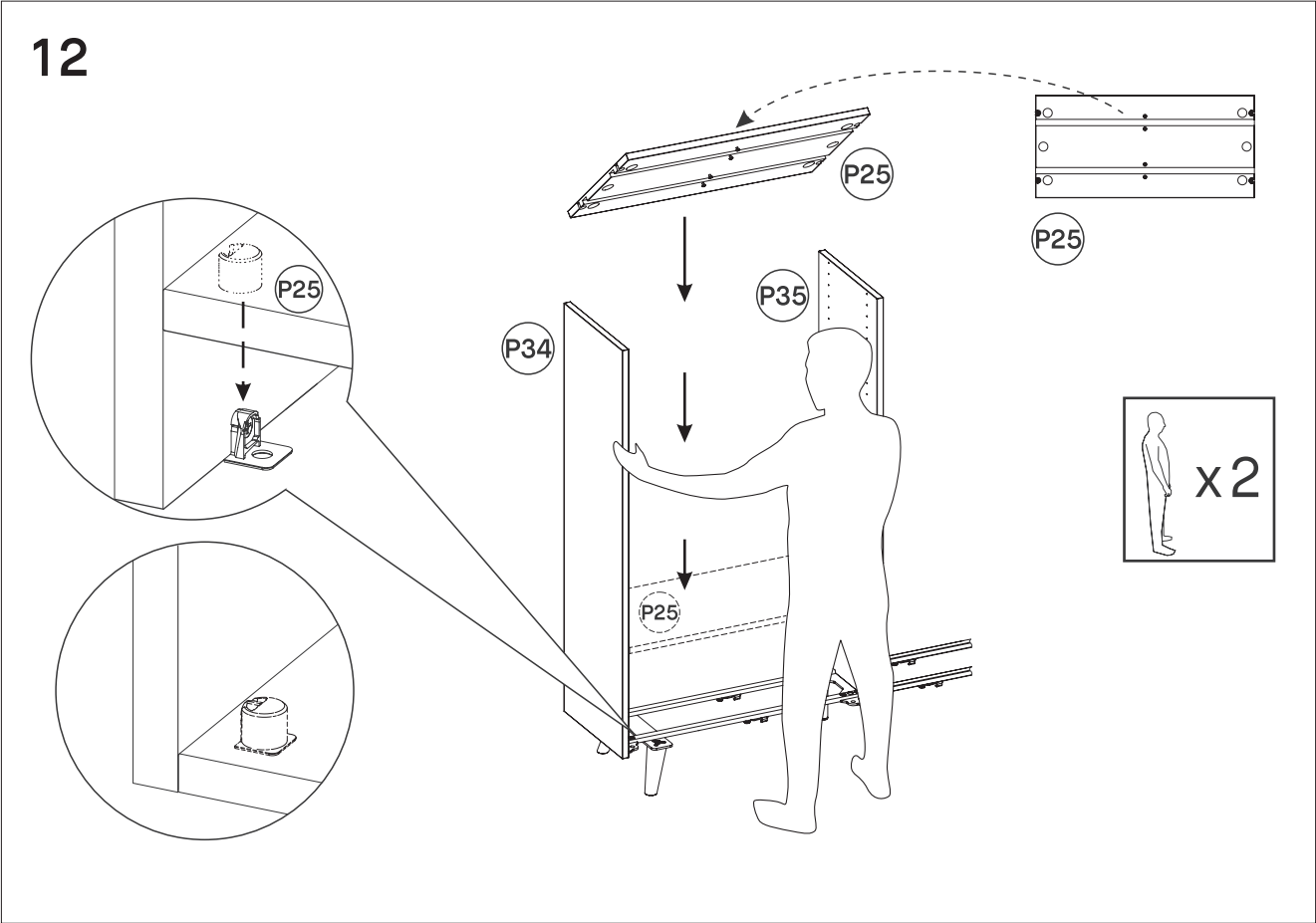


Screw in distance P11 and pad P10 to the bottom boards P25 by using the screw P12 (3,5 x 25 mm).

11

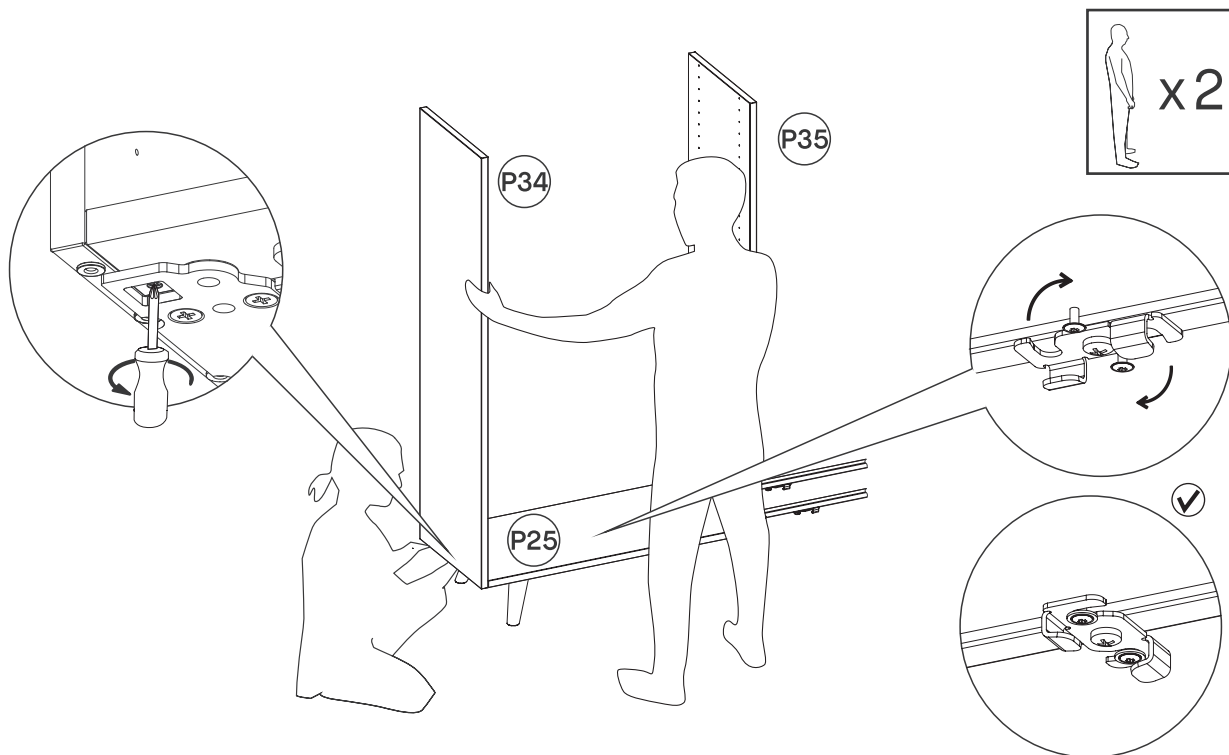


Now stick the first two sidewalls into their platform: the outer sidewalls go into the end of the single end platform P2 and the inner sidewall in the middle of the double platform P1.



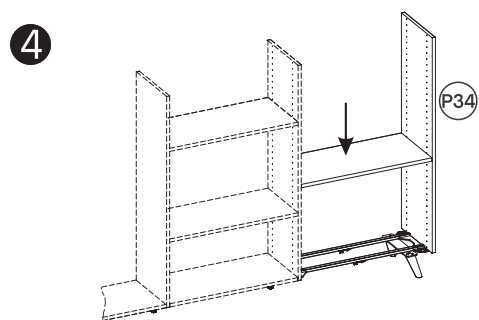
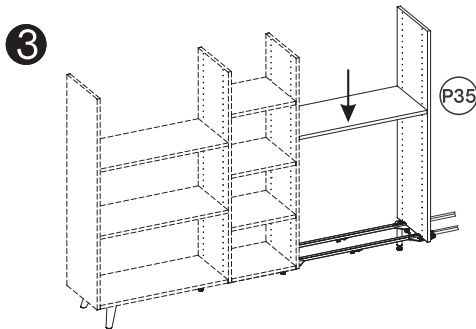
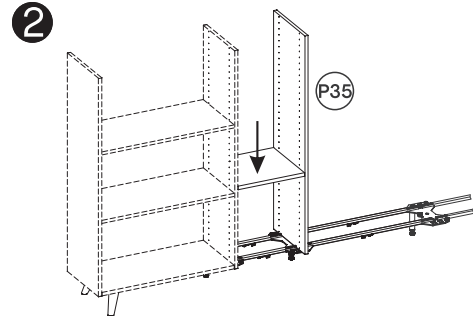
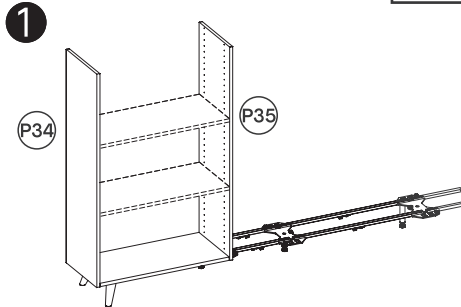
Place bottom boards P25 on the platform by joining it to the sidewalls P34/P35 with additional help.

13



Screw in the sidewalls to the bottom boards and turn the lock underneath the bottom board to connect the rails with the board. You should hear a 'click' sound once the lock is in it's final position.

14



**NOTE:** Step 11 to 13 go together and have to be performed multiple times, in case your configuration requires it (depending on the number of sidewalls you have ordered). Please connect two sidewalls on the left side of your product with their platform (step 11), mount the bottom board in the middle of them (step 12) and finally lock the bottom platform with the rails (step 13). Repeat steps 11 to 13 by adding sidewall by sidewall, until you reach the outer sidewall on the right side of your product.