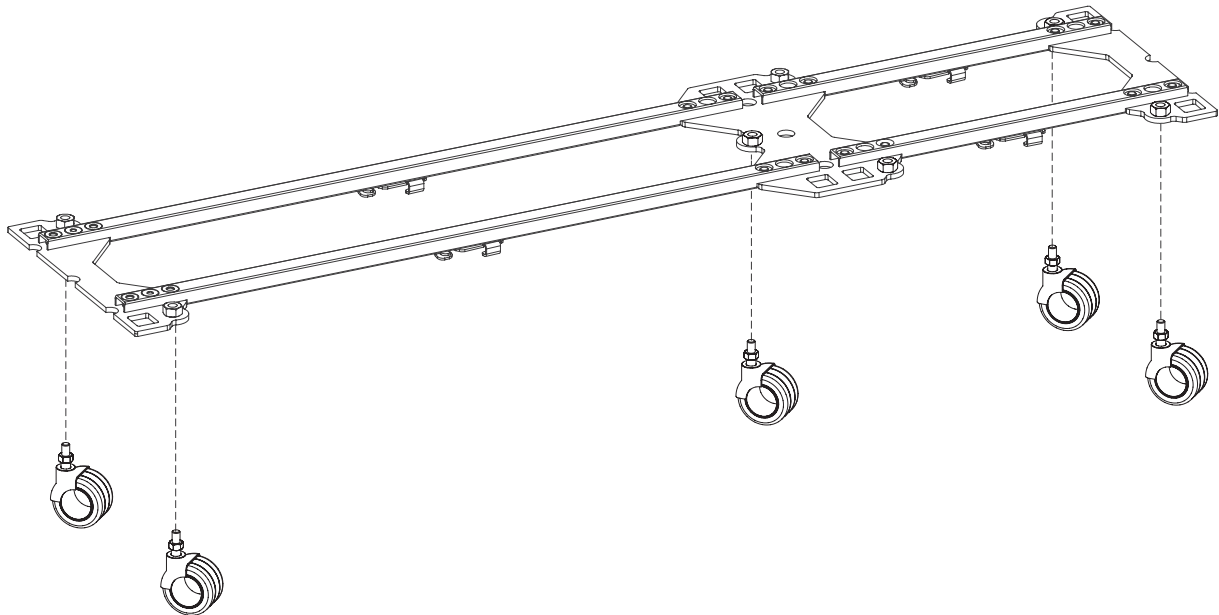


SPYN LEGS

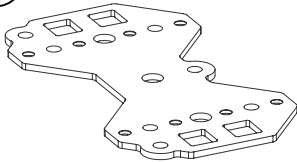
FOR GRYD



You will build something similar to this.

Here are the parts you will need.

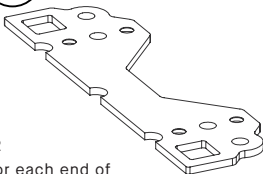
P1



x1
or more depending
on your configuration

Leg Platform Plate (Double-sided)
101.173.00

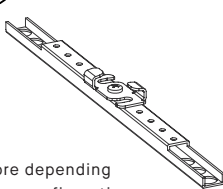
P2



x2
for each end of
the platform

Leg Platform Plate (Single-sided)
101.173.01

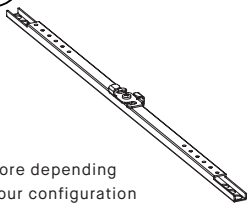
P3



x1
or more depending
on your configuration

Platform Profile (37cm)
101.174.00

P4



x1
or more depending
on your configuration

Platform Profile (73cm)
101.174.01

P13



Metal shelf support
901.100.04

P14



3 x 10

Screw Varianta 3 x 10mm
901.100.05

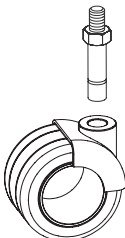
P7



8 x 14

Flat head screw 8 x 14mm
902.100.21

P24



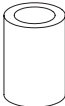
SPYN Legs
101.176.xx

P10



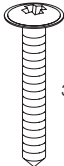
Screw pad
902.100.13

P11



Screw distrancer
902.100.15

P12

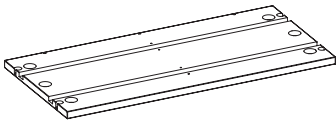


3,5 x 25

Truss screw 3,5 x 25mm
902.100.12

901.100.99

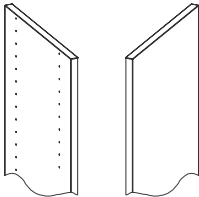
P25



Bottom Board

101.171.xx, 101.172.xx

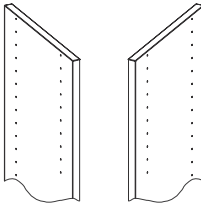
P34



Outer Sidewalls

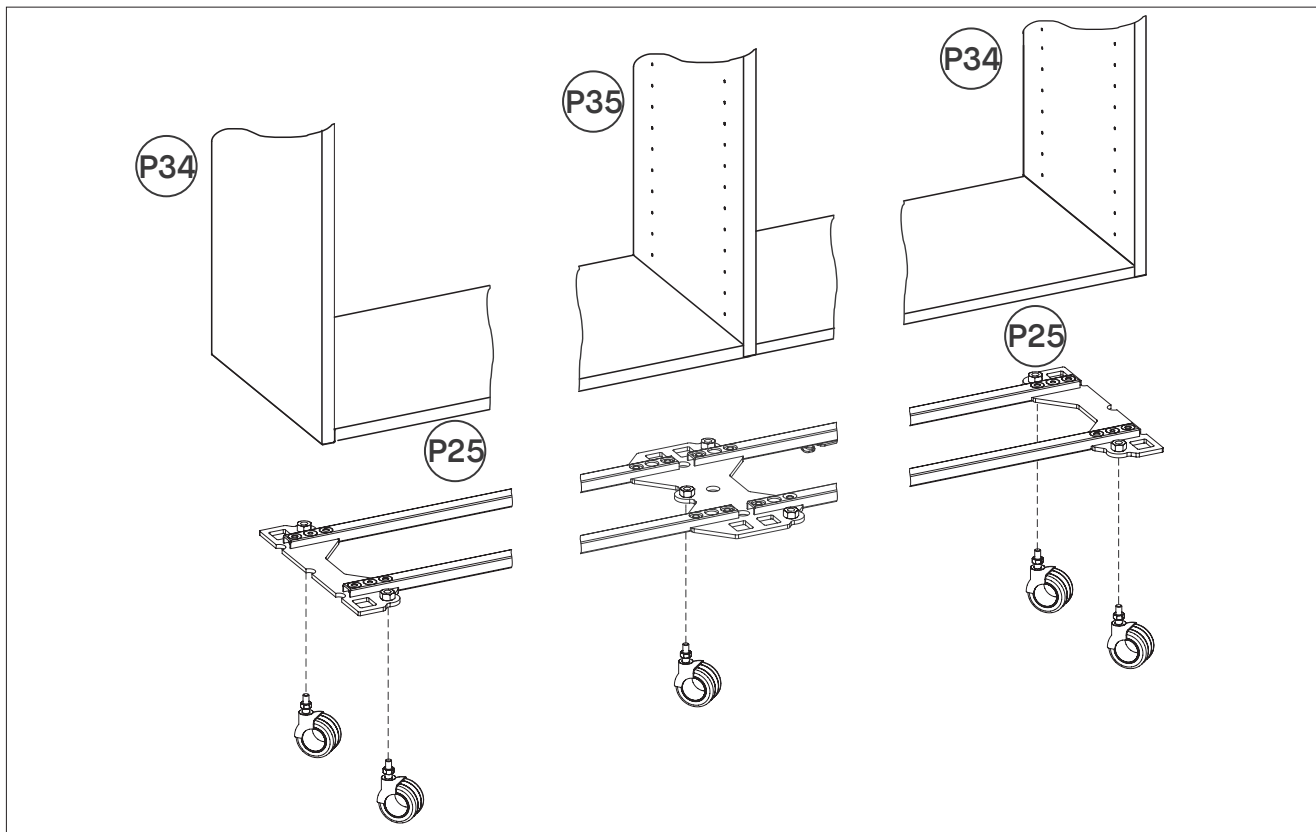
101.100.xx, 101.101.xx
101.102.xx, 101.103.xx
101.104.xx, 101.105.xx

P35



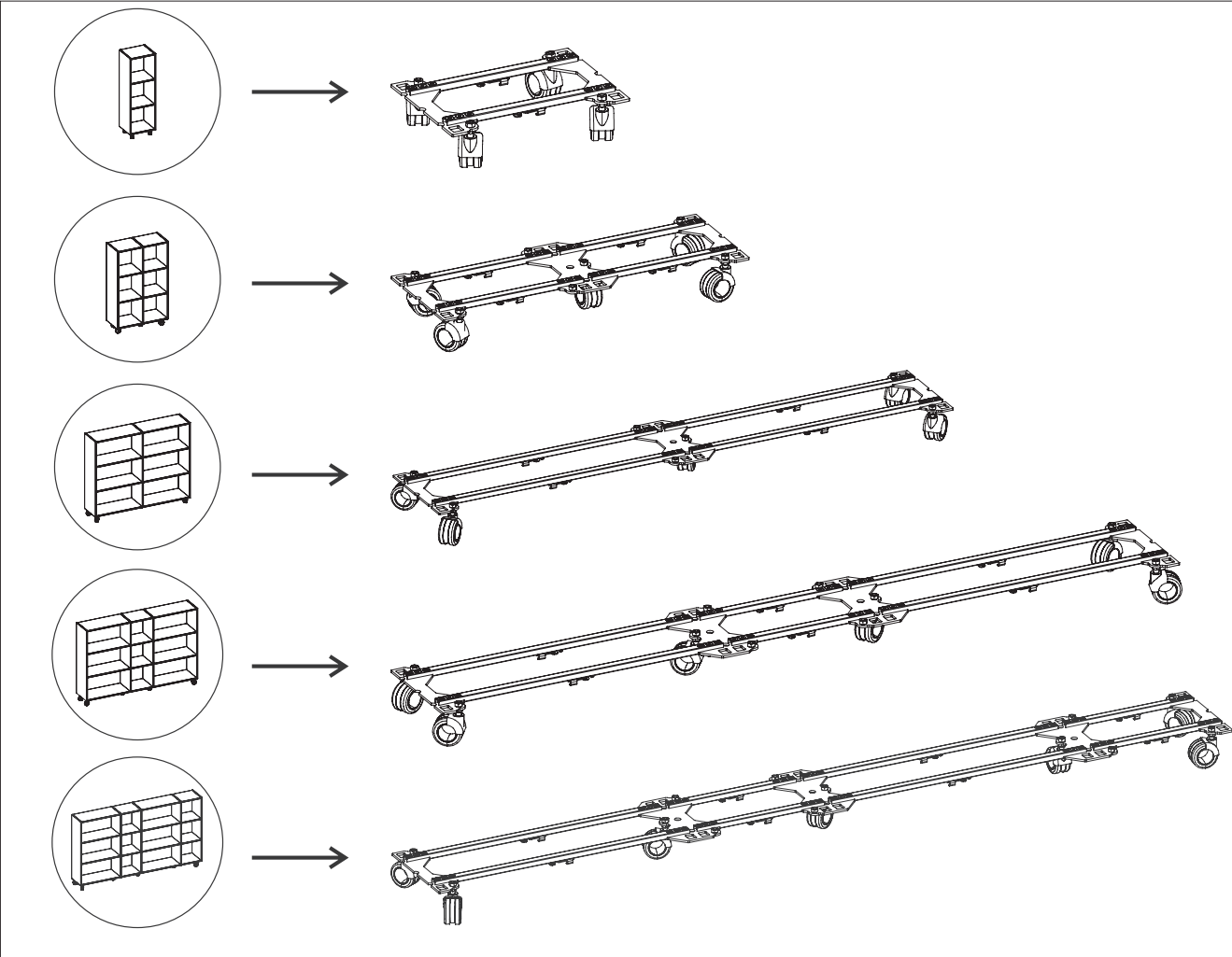
Inner Sidewalls

101.106.xx, 101.107.xx
101.108.xx, 101.109.xx
101.110.xx, 101.111.xx



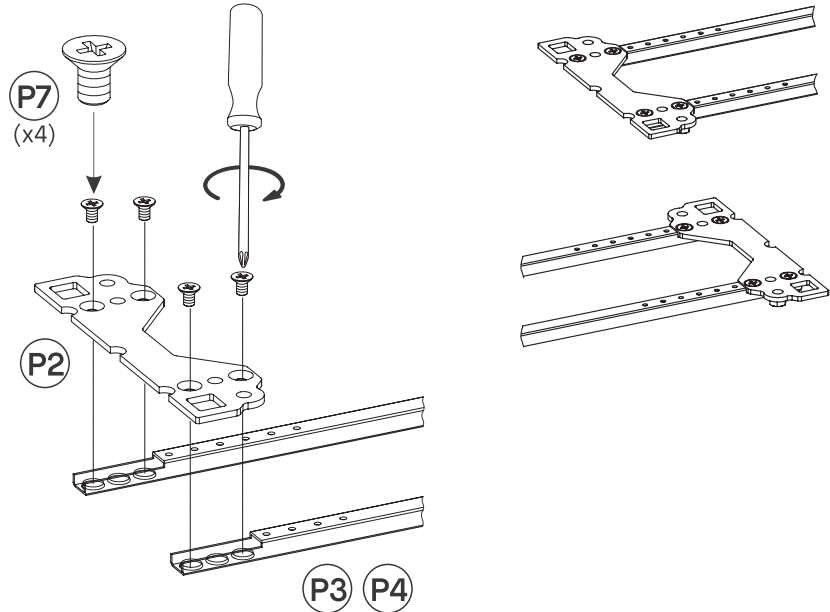
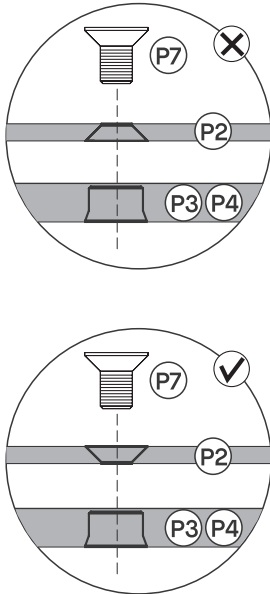
Overall: the single platforms belong below the outer sidewalls and the double platform(s) belong below the inner sidewall(s).

NOTE: the maximum carrying capacity per wheel is 50kg. E.g.: the maximum weight of a GRYD SPYN construction with 4 wheels is 200kg. Please calculate the maximum capacity of your furniture accordingly (number of wheel * 50kg) and keep it in mind once you add your personal belongings to your furniture.



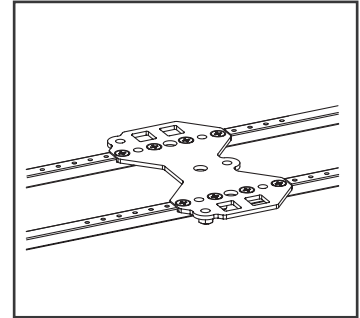
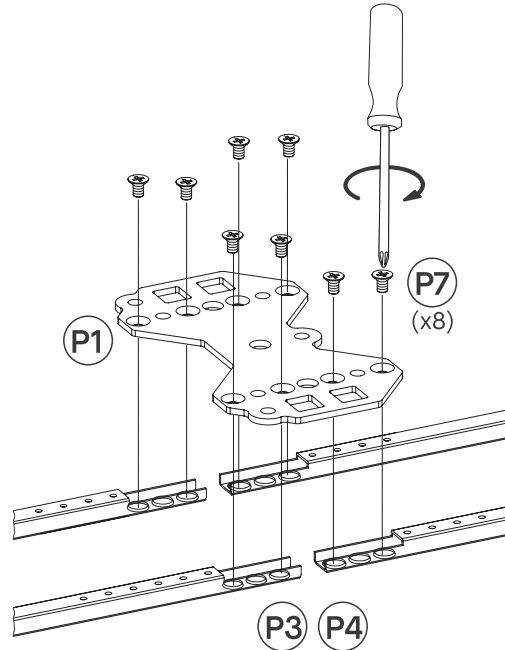
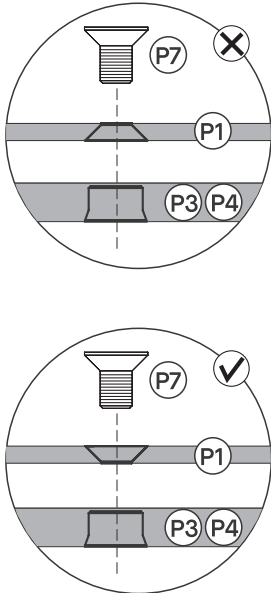
Have a look at the example constructions on the left and what the leg construction for their examples look like on the right. Find the one construction that matches your design the best and assemble the leg construction accordingly.

1



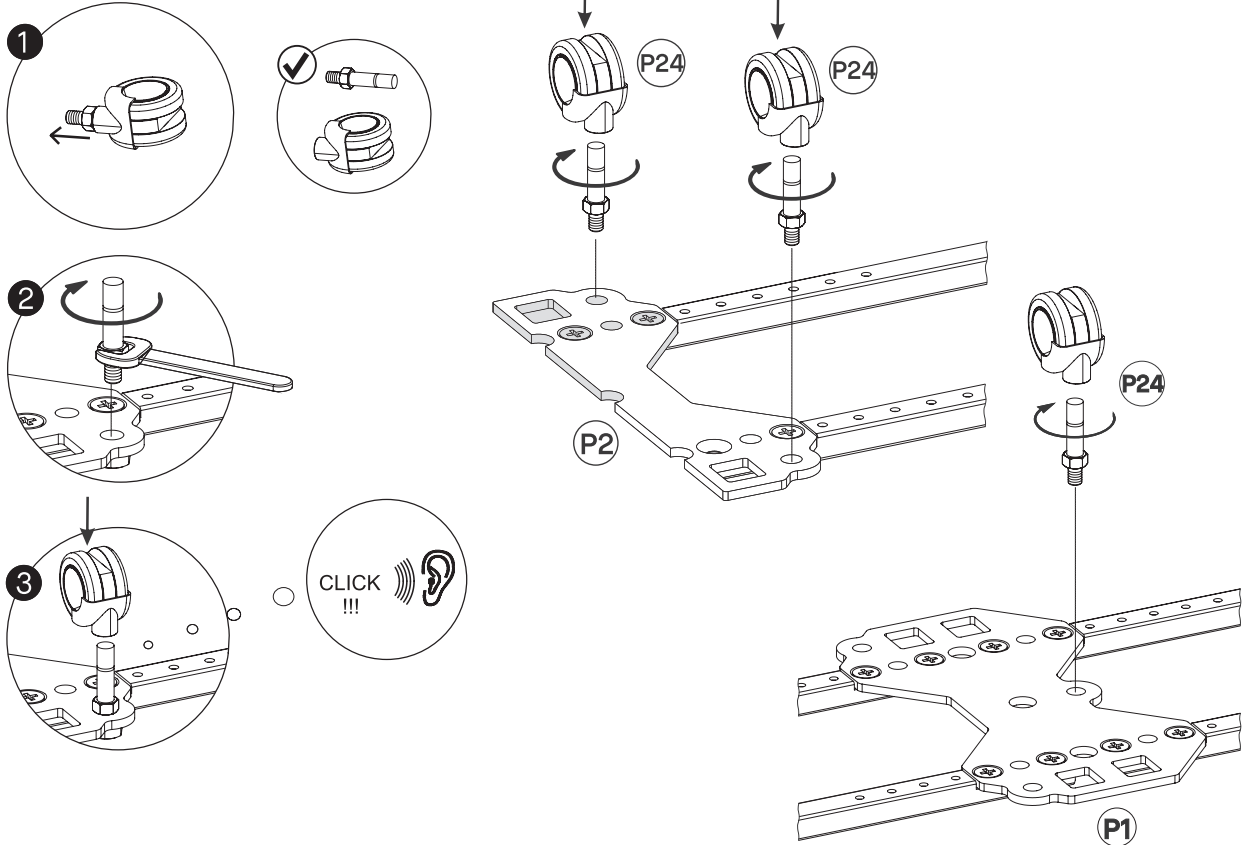
Prepare installment of Spyn leg below outer sidewall: connect single end platform P2 and two profiles of P3 or P4 (depending on configuration) with the screw P7. Pay attention to the illustration (left): make sure to connect the platform from the right side.

2



Prepare installation of Spyn leg below inner sidewall: connect double platform P1 and two profiles of P3 or P4 (depending on configuration) with the screw P7. Pay attention to the illustration (left): make sure to connect the platform from the right side.

3

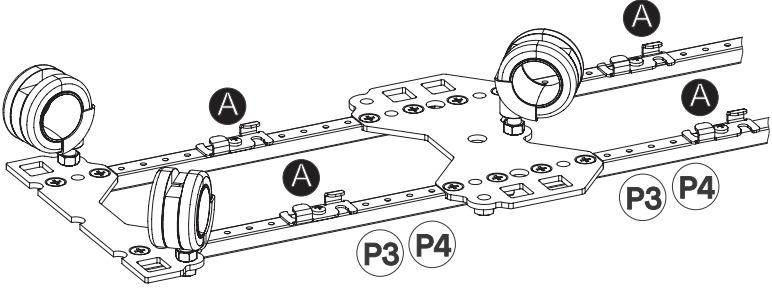


1 Remove connector screw from wheel(s)

2 Screw in connector screw into single end platform (P2) / double platform (P1) as seen above

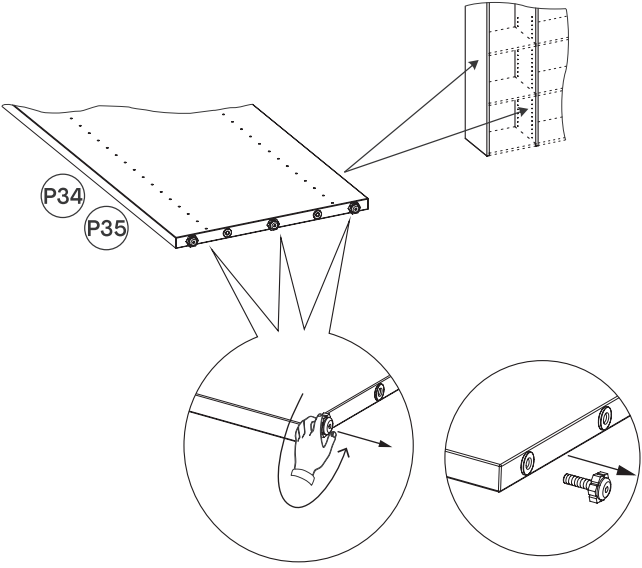
3 Plug wheel into connector screw. You should hear a 'click' sound once the wheel is in its final position.

4



Make sure to match the position of the hinges as seen in A above.
Otherwise you won't be able to mount the sidewalls properly.

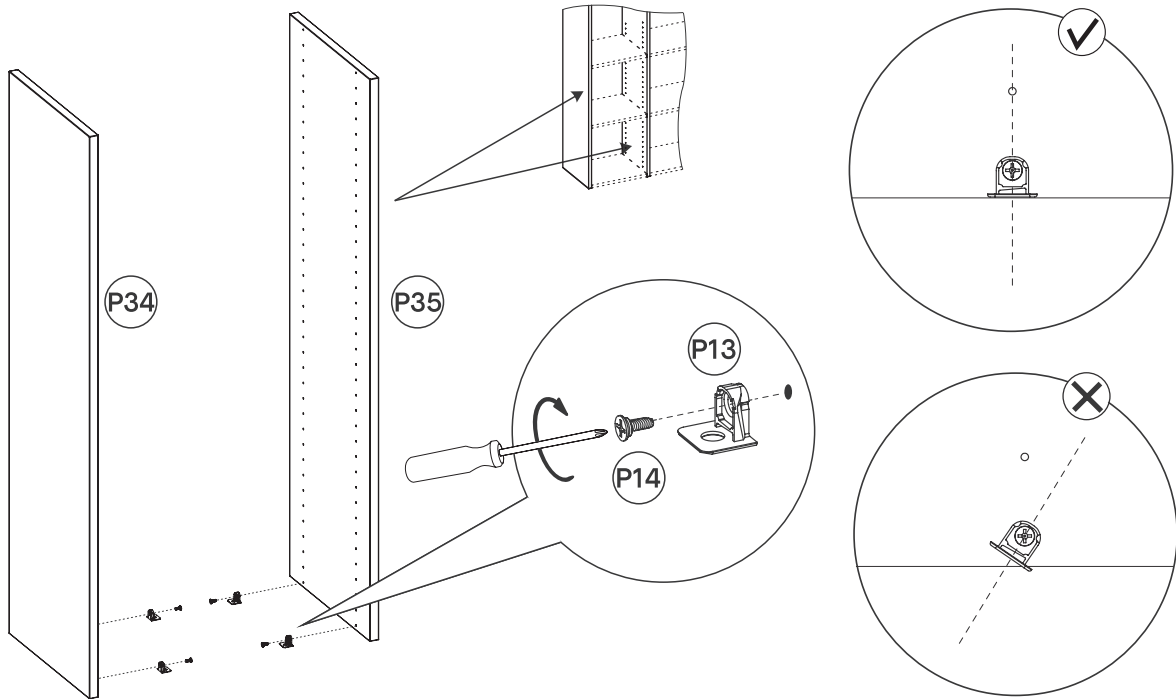
5



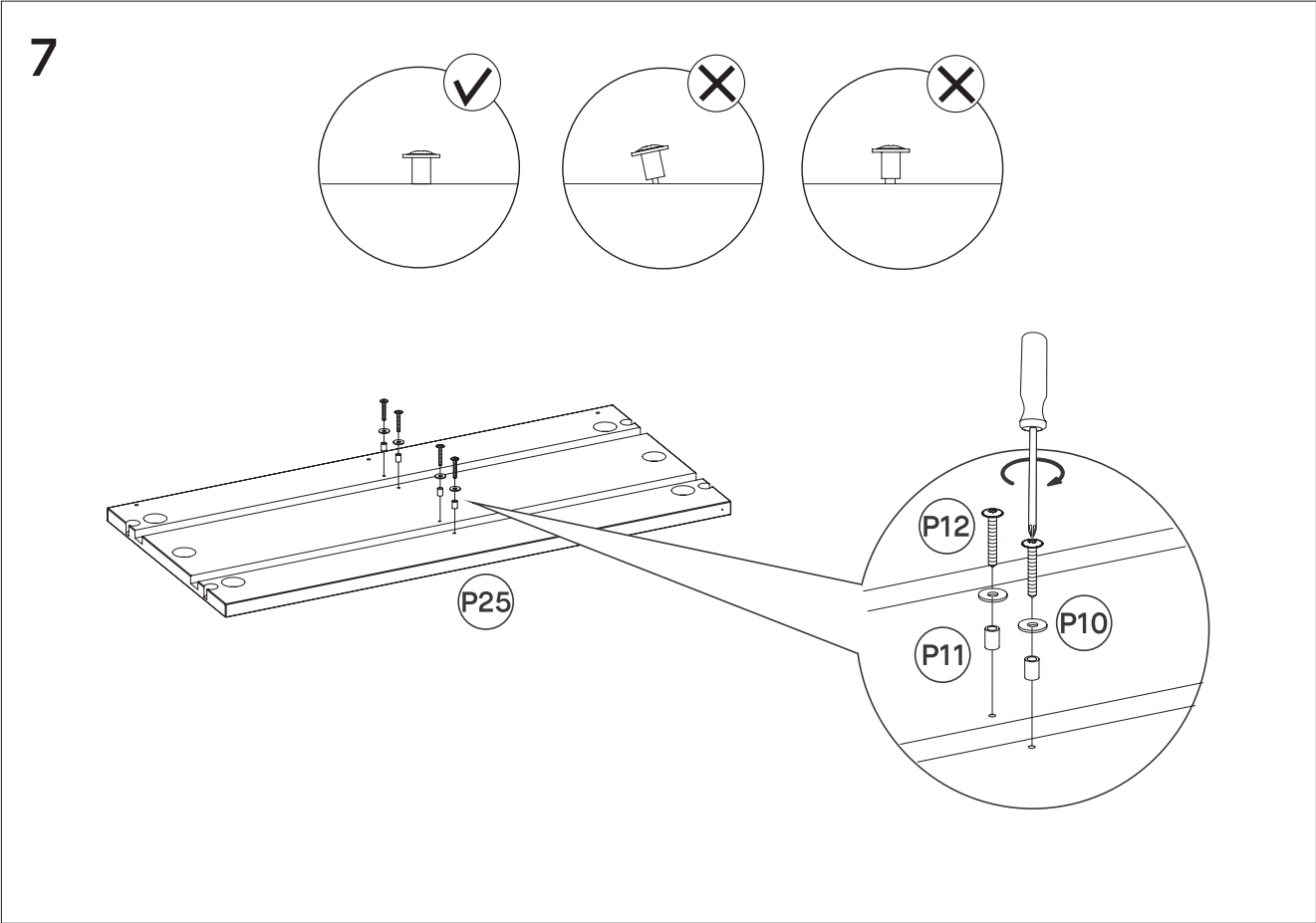
All our sidewalls come with smaller metal legs by default. As you ordered another type of leg, you don't need them for your furniture.
Please remove all of them as shown above.

SPYN Legs 9

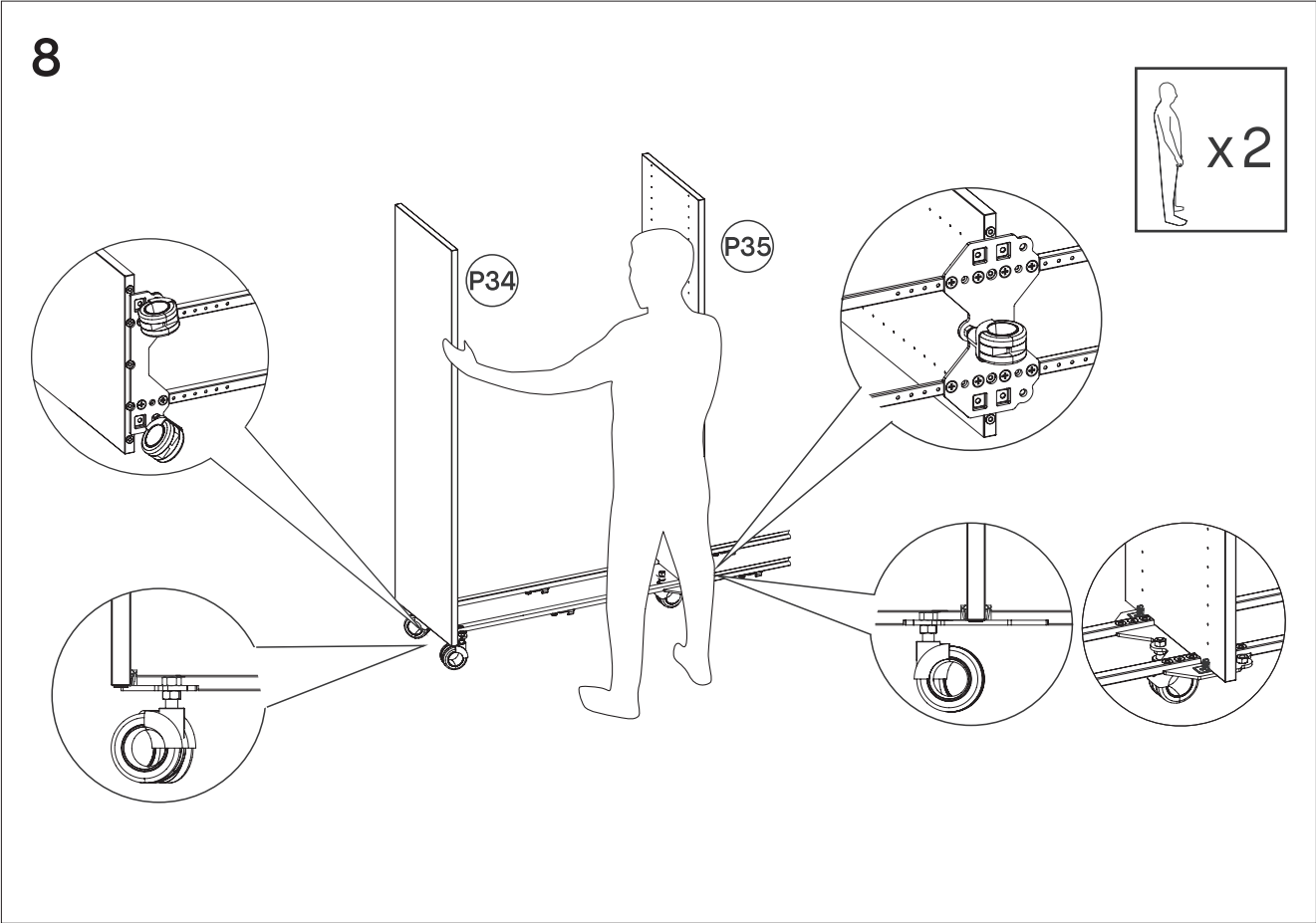
6



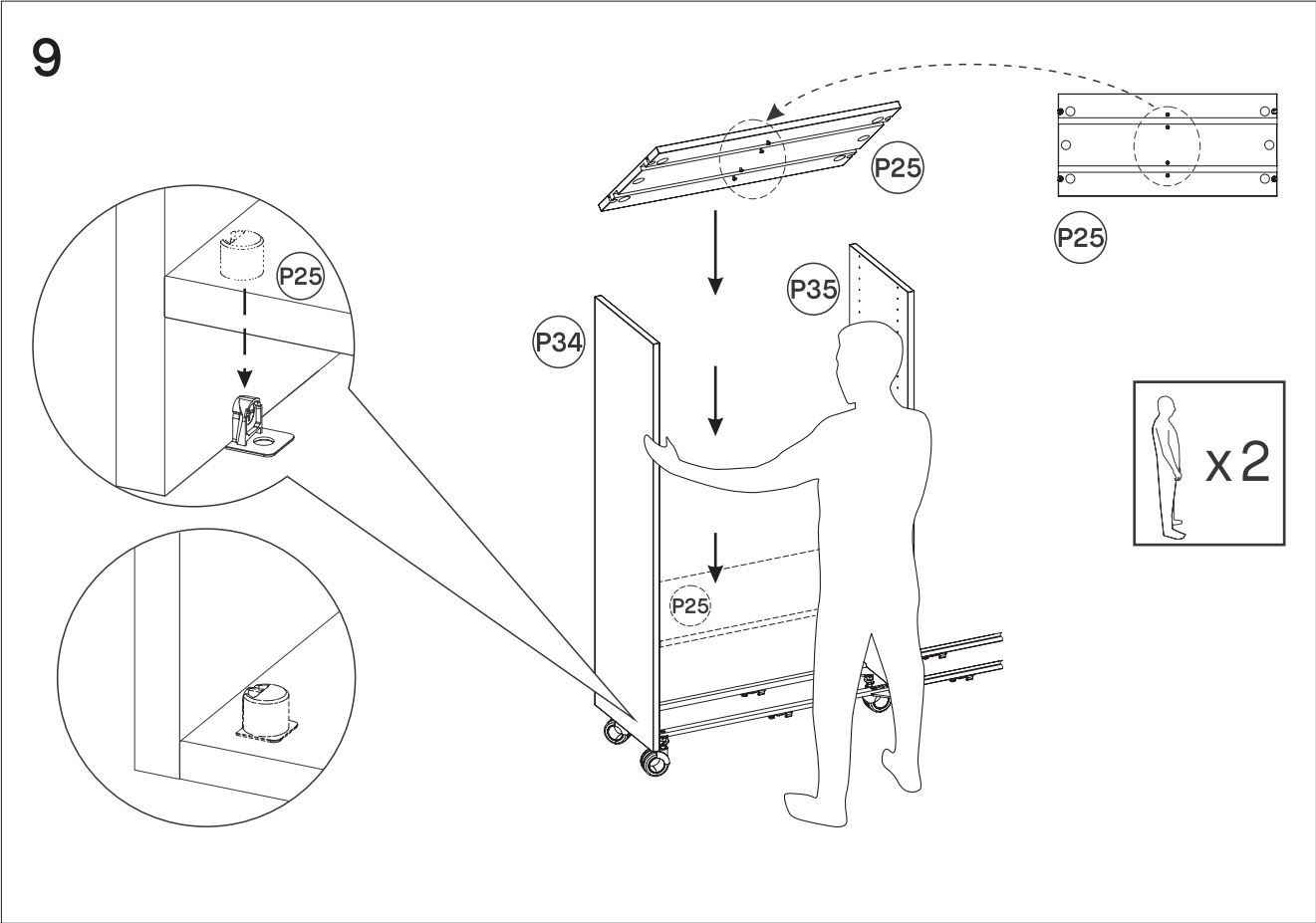
The metal shelf supports (P13) are there to hold the bottom boards. Screw the supports into all sidewalls as shown above (using screw P14). Please check your configuration to figure out where to screw in the support. You need to use them wherever you placed a board. Please refer to the “Don’t forget to measure” tip from the “Introduction” chapter on page 10 for details on how to position the metal shelf supports correctly.



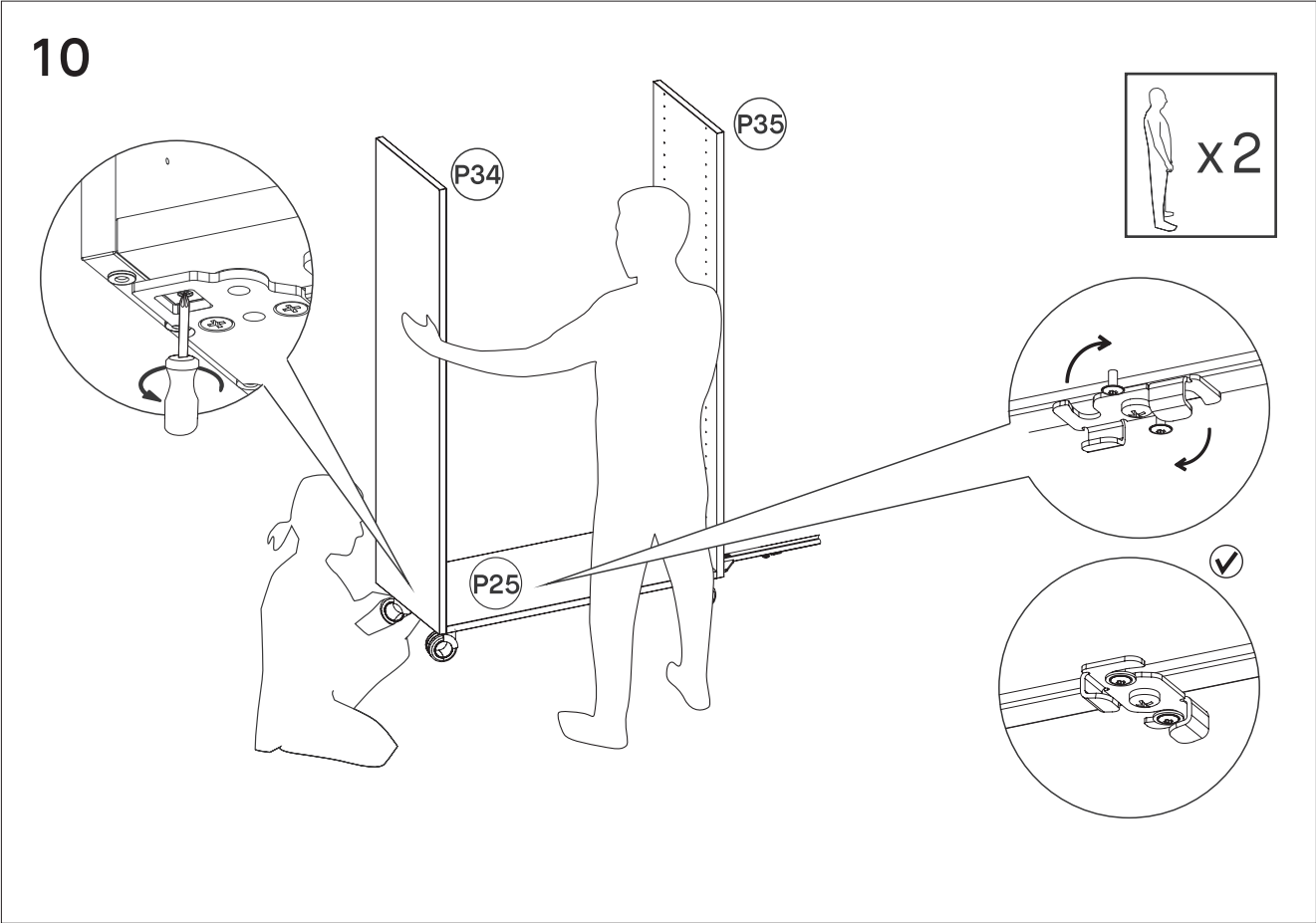
Now prepare the bottom boards to be connected with the existing construction. Screw in distancer P11 and pad P10 to the bottom boards P25 by using the screw P12 (3,5x25mm).



Now stick the first two sidewalls into their platform: The outer sidewalls go into the end of the single end platform P2 and the inner sidewall in the middle of the double platform P1.



Place bottom boards P25 on the platform by joining it to the sidewalls P34/P35 with additional help.

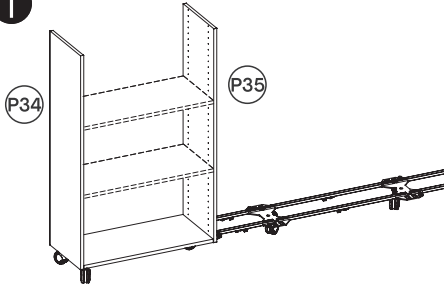


Screw in the sidewalls P34/P35 to the bottom boards and turn the hinge (lock) underneath the bottom board to connect the rails with the board. You should hear a ‘click’ sound once the lock is in its final position.

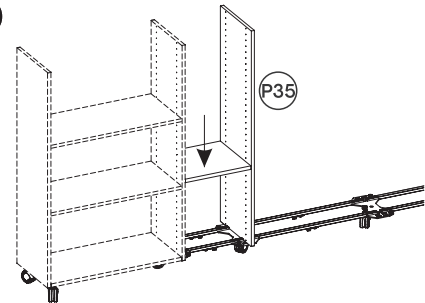
11



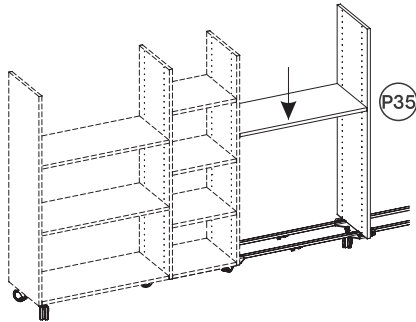
1



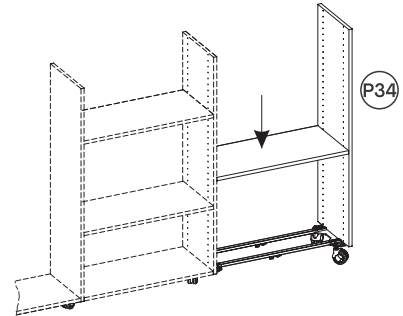
2



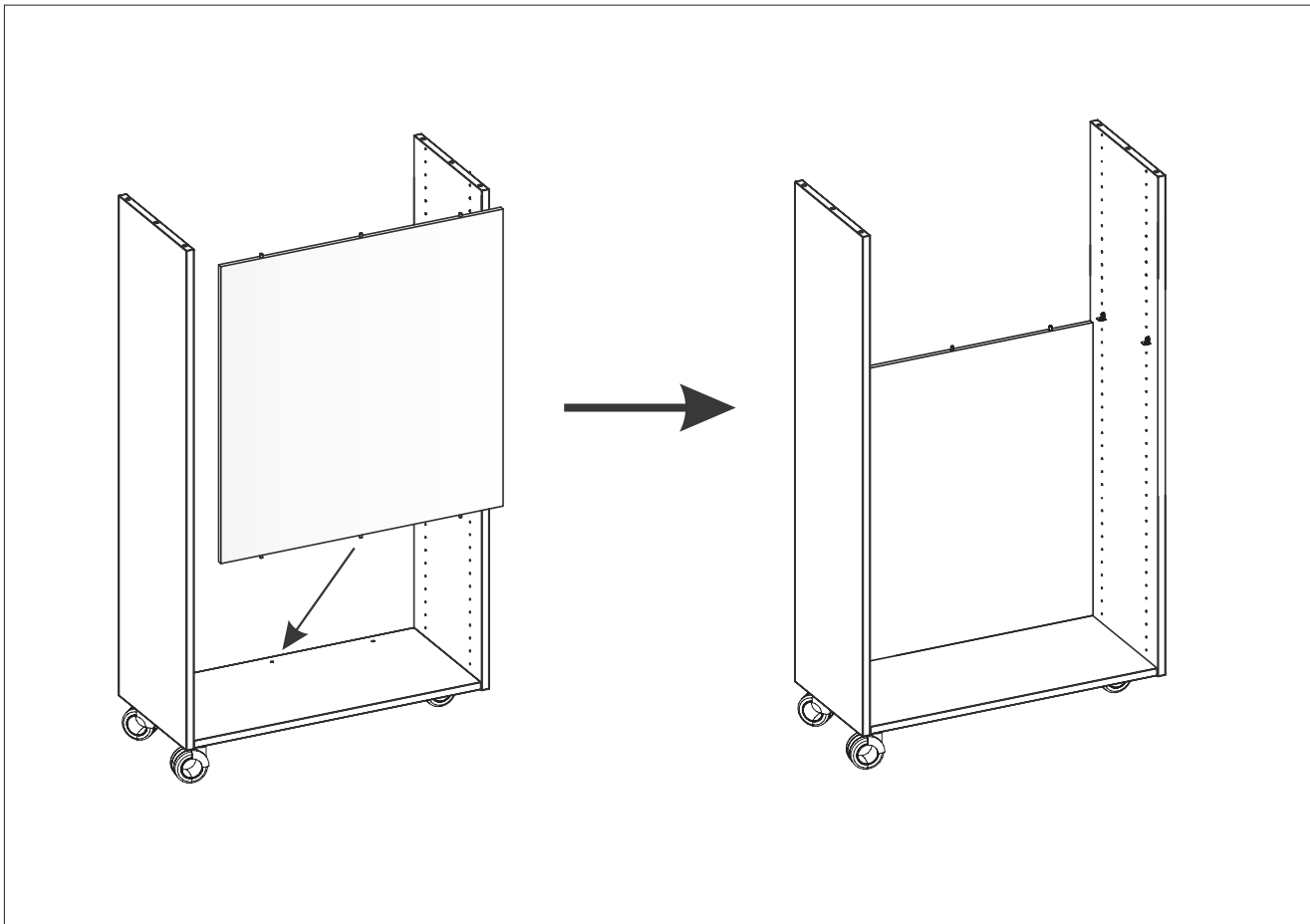
3



4



NOTE: The steps 8 - 10 go together and have to be performed multiple times, if your configuration requires it (depending on the number of sidewalls you have ordered). Please connect two sidewalls on the left-hand side of your product with their platform (step 8), mount the bottom board in the middle of them (step 10) and finally lock the bottom platform with the rails (step 10). Repeat steps 8 to 10 by adding one sidewall at a time, until you reach the outer sidewall on the right-hand side of your product.



NOTE: every compartment (section out of two sidewalls and their connecting boards) needs at least one backwall to guarantee stability. Installing backwalls will be covered in the following pages.

NOTE: please do not attach your furniture to the wall nor level it, as explained in step 3 and 9-11 in the following pages.