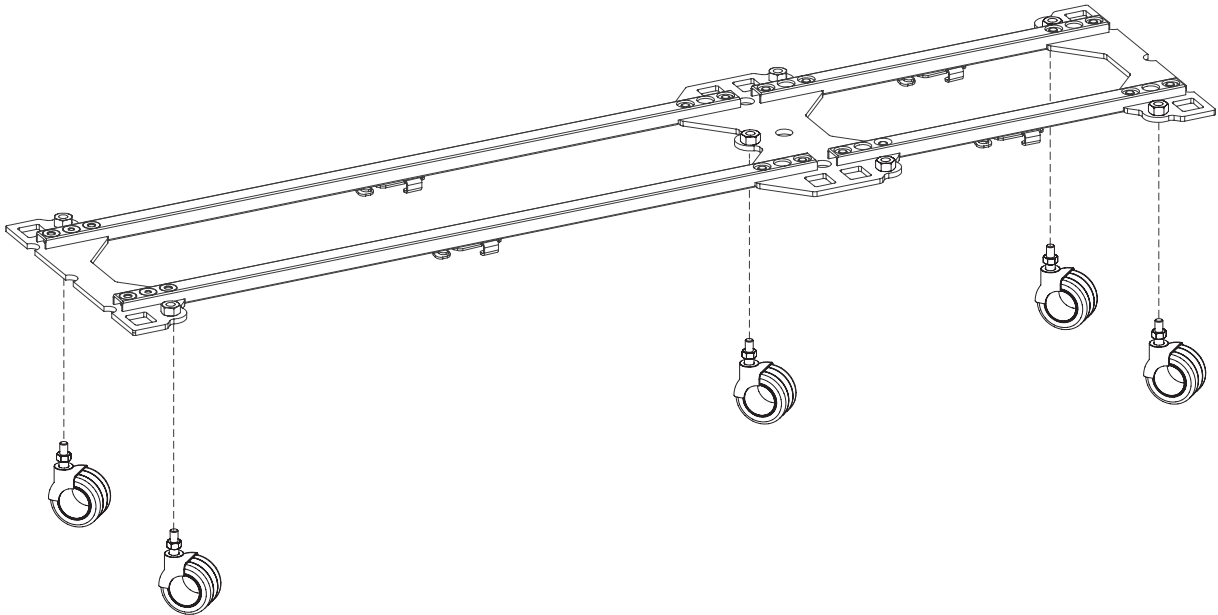


SPYN LEGS

FOR GRYD

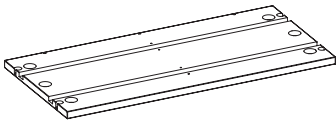


You will build something similar to this.

Here are the parts you will need.

<div>P1</div> <div>x1 or more depending on your configuration</div> <div></div> <div>Leg Platform Plate (Double-sided)</div> <div>101.173.01</div>	<div>P2</div> <div>x2 for each end of the platform</div> <div></div> <div>Leg Platform Plate (Single-sided)</div> <div>101.173.01</div>	<div>P3</div> <div>x1 or more depending on your configuration</div> <div></div> <div>Platform Profile (37cm)</div> <div>101.174.00</div>	<div>P4</div> <div>x1 or more depending on your configuration</div> <div></div> <div>Platform Profile (73cm)</div> <div>101.174.01</div>
<div>P13</div> <div></div> <div>Metal shelf support</div> <div>901.100.04</div>	<div>P14</div> <div></div> <div>3 x 10</div> <div>Screw 3 x 10mm</div> <div>901.100.05</div>	<div>P7</div> <div></div> <div>8 x 14</div> <div>Flat head screw 8 x 14mm</div> <div>902.100.21</div>	<div>P24</div> <div></div> <div>SPYN Legs</div> <div>101.176.xx</div>
<div>P10</div> <div></div> <div>Screw pad</div> <div>902.100.13</div>	<div>P11</div> <div></div> <div>Screw distrancer</div> <div>902.100.15</div>	<div>P12</div> <div></div> <div>3,5 x 25</div> <div>Truss screw 3,5 x 25mm</div> <div>902.100.12</div>	
901.100.99			

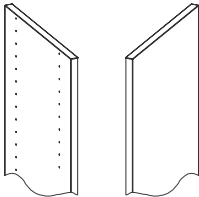
P25



Bottom Board

101.171-172.xx/ 101.441-442.xx

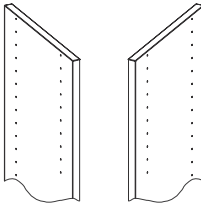
P34



Outer Sidewalls

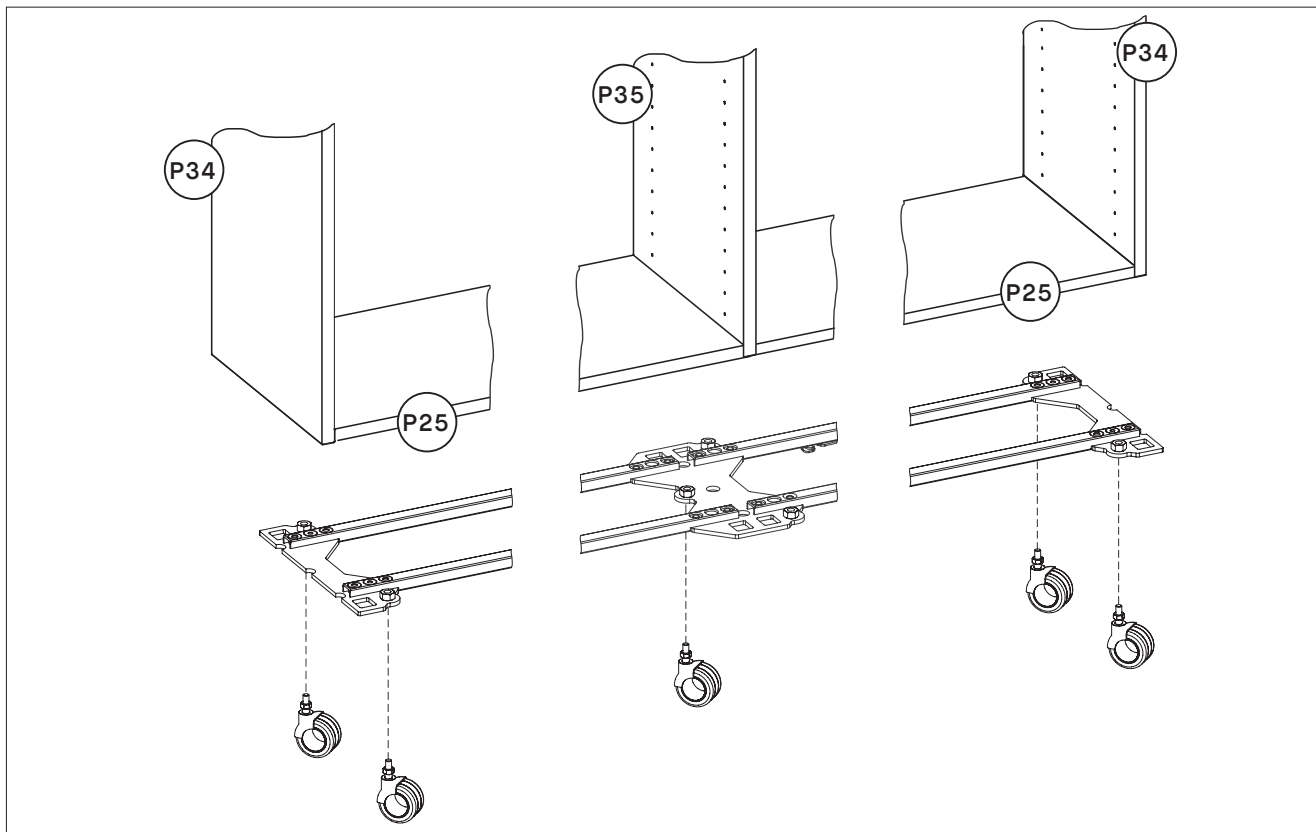
101.100-105.xx/ 101.400-406.xx

P35



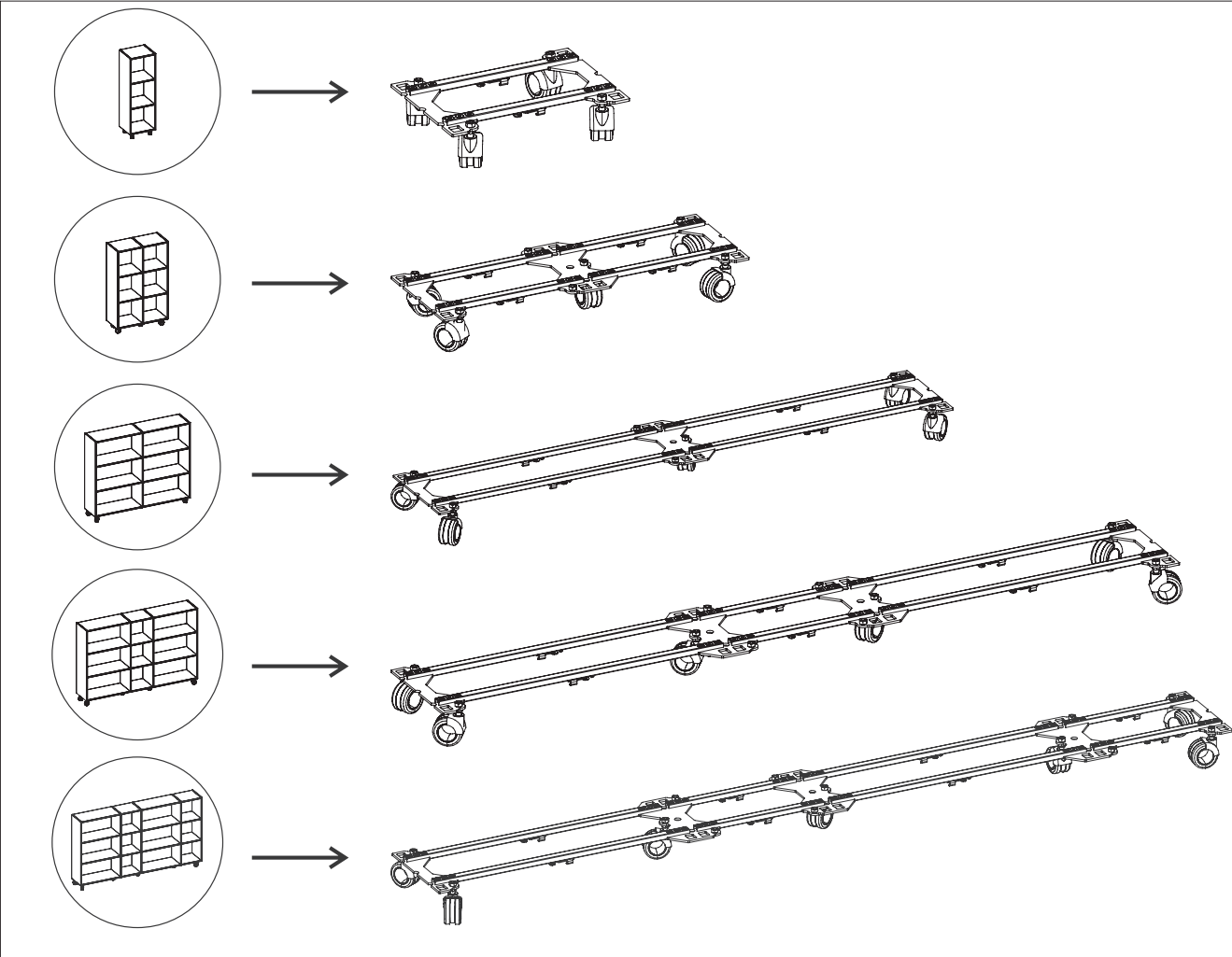
Inner Sidewalls

101.106-111.xx/ 101.407-413.xx

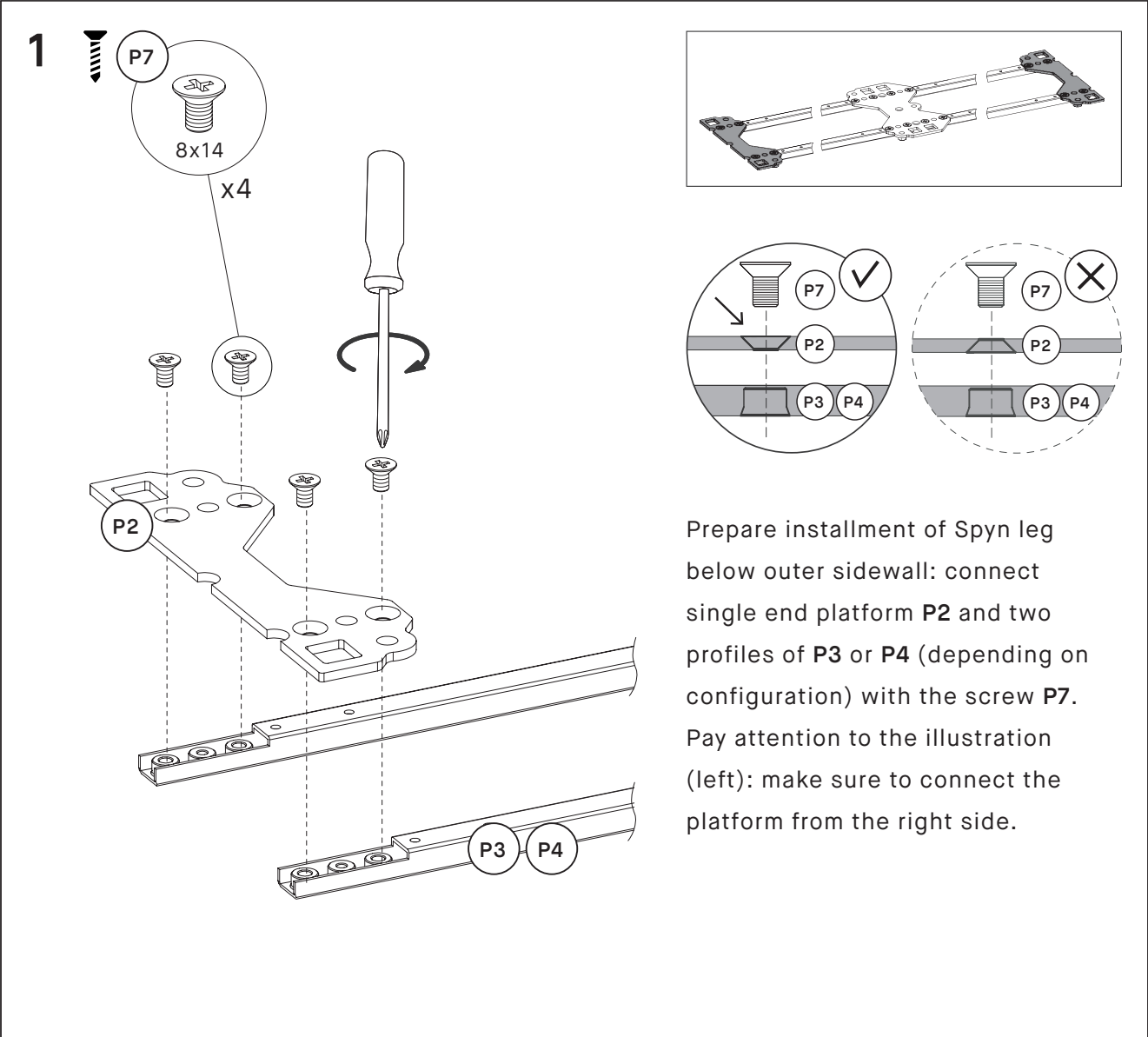


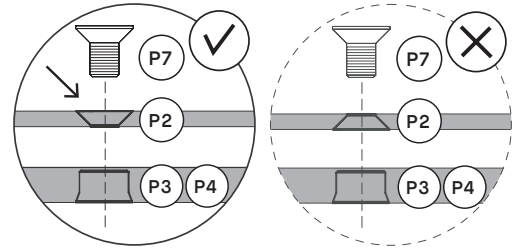
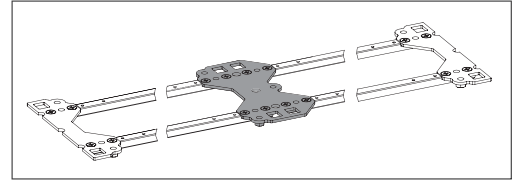
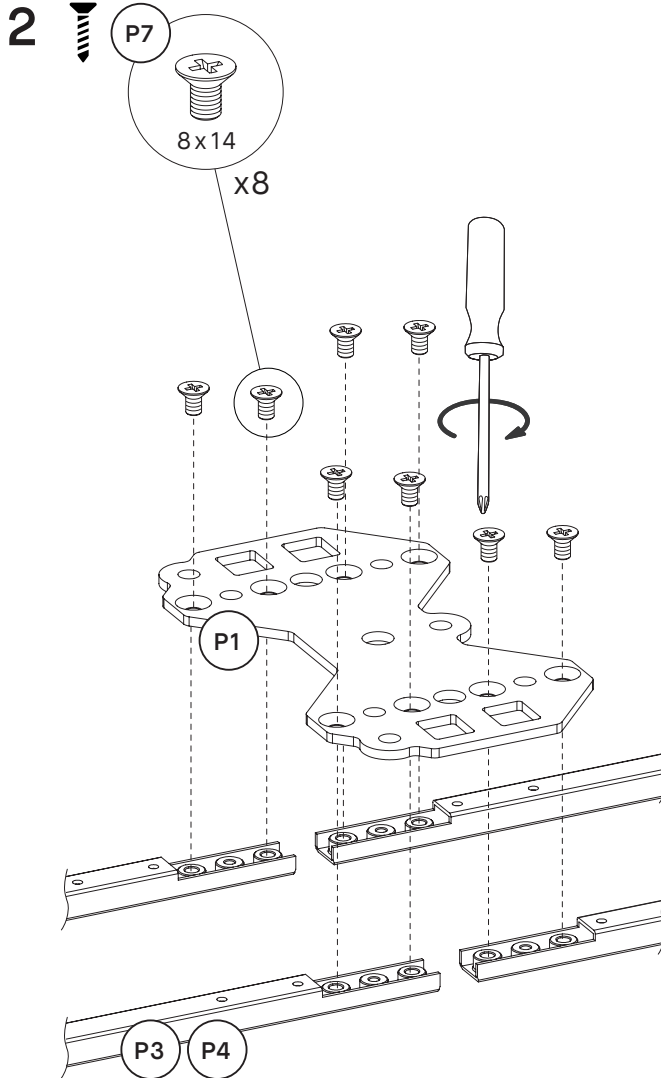
Overall: the single platforms belong below the outer sidewalls and the double platform(s) belong below the inner sidewall(s).

NOTE: the maximum carrying capacity per wheel is 50kg. E.g.: the maximum weight of a GRYD SPYN construction with 4 wheels is 200kg. Please calculate the maximum capacity of your furniture accordingly (number of wheel * 50kg) and keep it in mind once you add your personal belongings to your furniture.



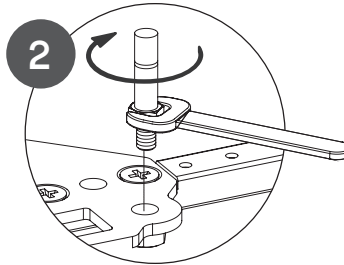
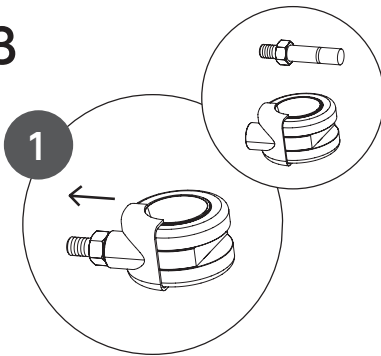
Have a look at the example constructions on the left and what the leg construction for their examples look like on the right. Find the one construction that matches your design the best and assemble the leg construction accordingly.



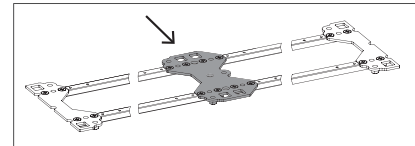
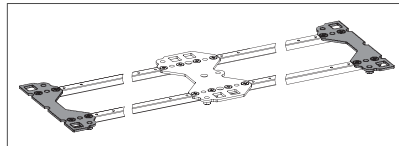


Prepare installation of Spyn leg below inner sidewall: connect double platform **P1** and two profiles of **P3** or **P4** (depending on configuration) with the screw **P7**. Pay attention to the illustration (left): make sure to connect the platform from the right side.

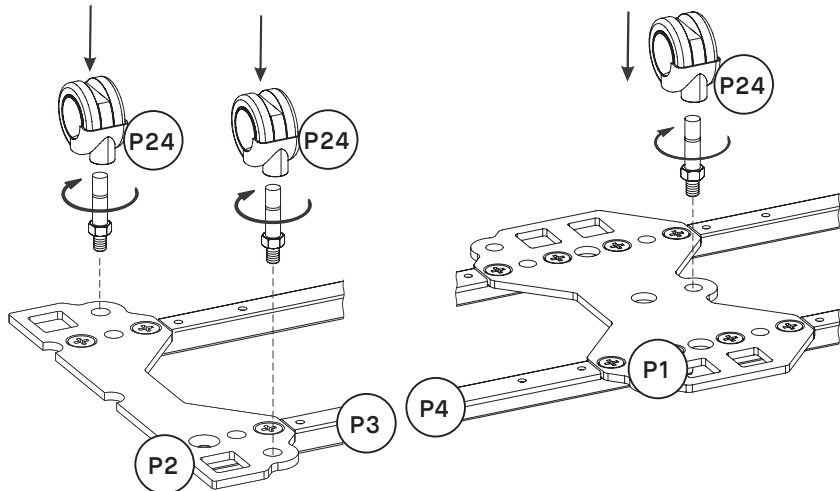
3



01. Remove connector screw from wheel(s)

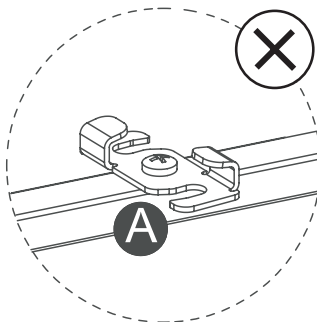
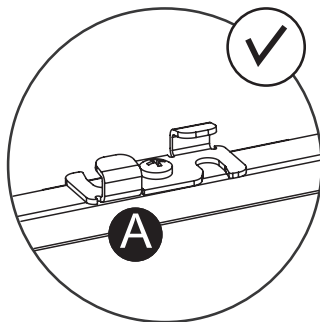


02. Screw in connector screw into single end platform (P2) / double platform (P1) as seen above

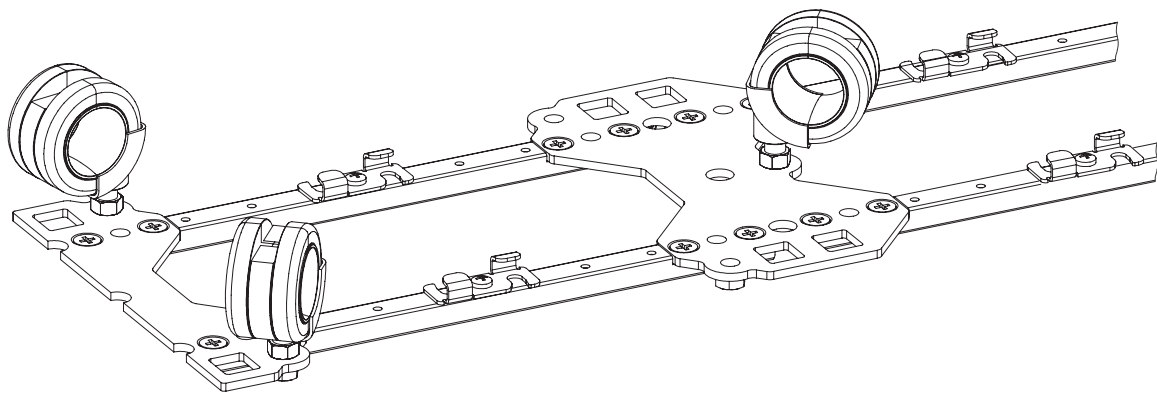


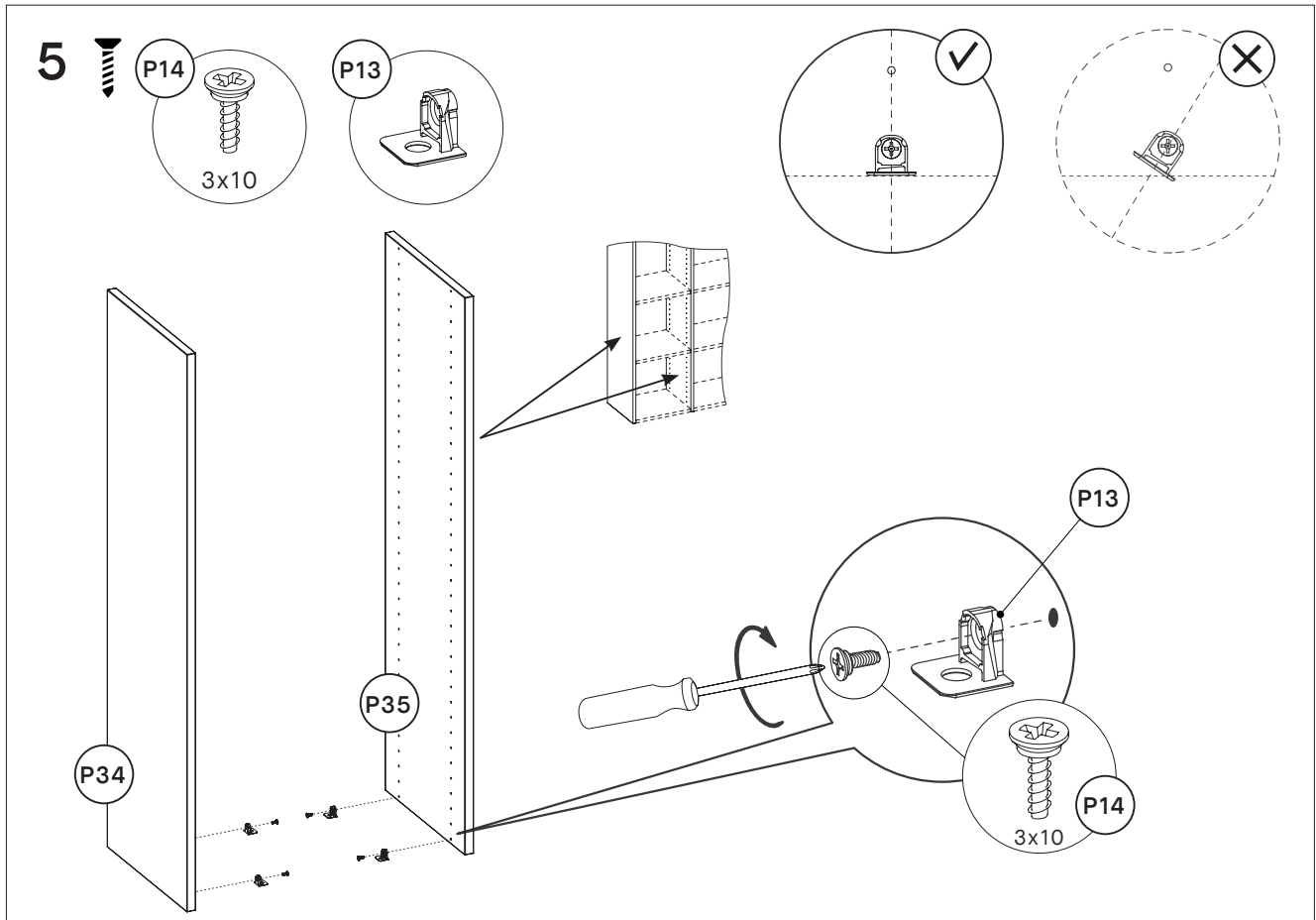
03. Plug wheel into connector screw. You should hear a 'click' sound once the wheel is in its final position.

4



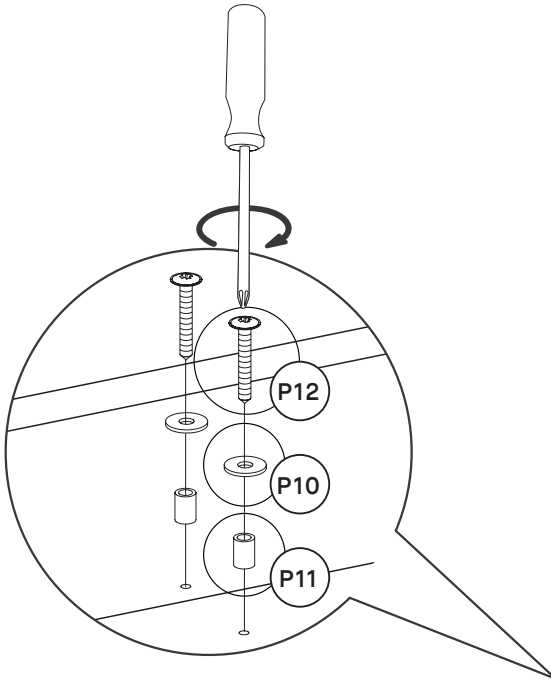
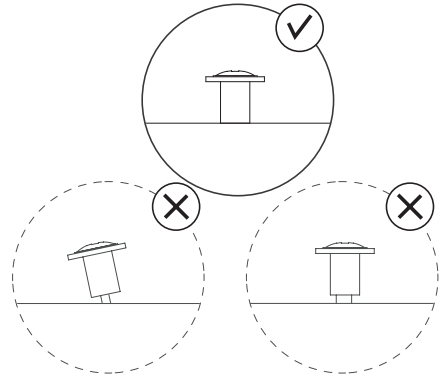
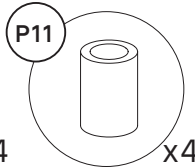
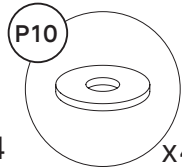
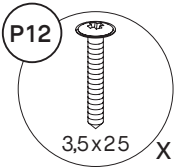
Make sure to match the position of the hinges as seen in A above. Otherwise you won't be able to mount the sidewalls properly.



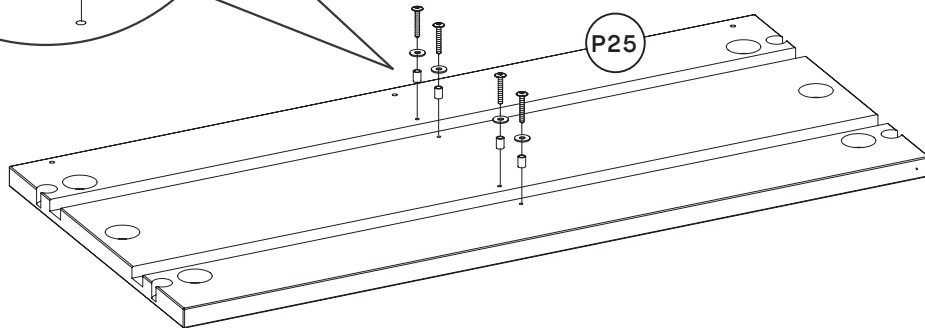


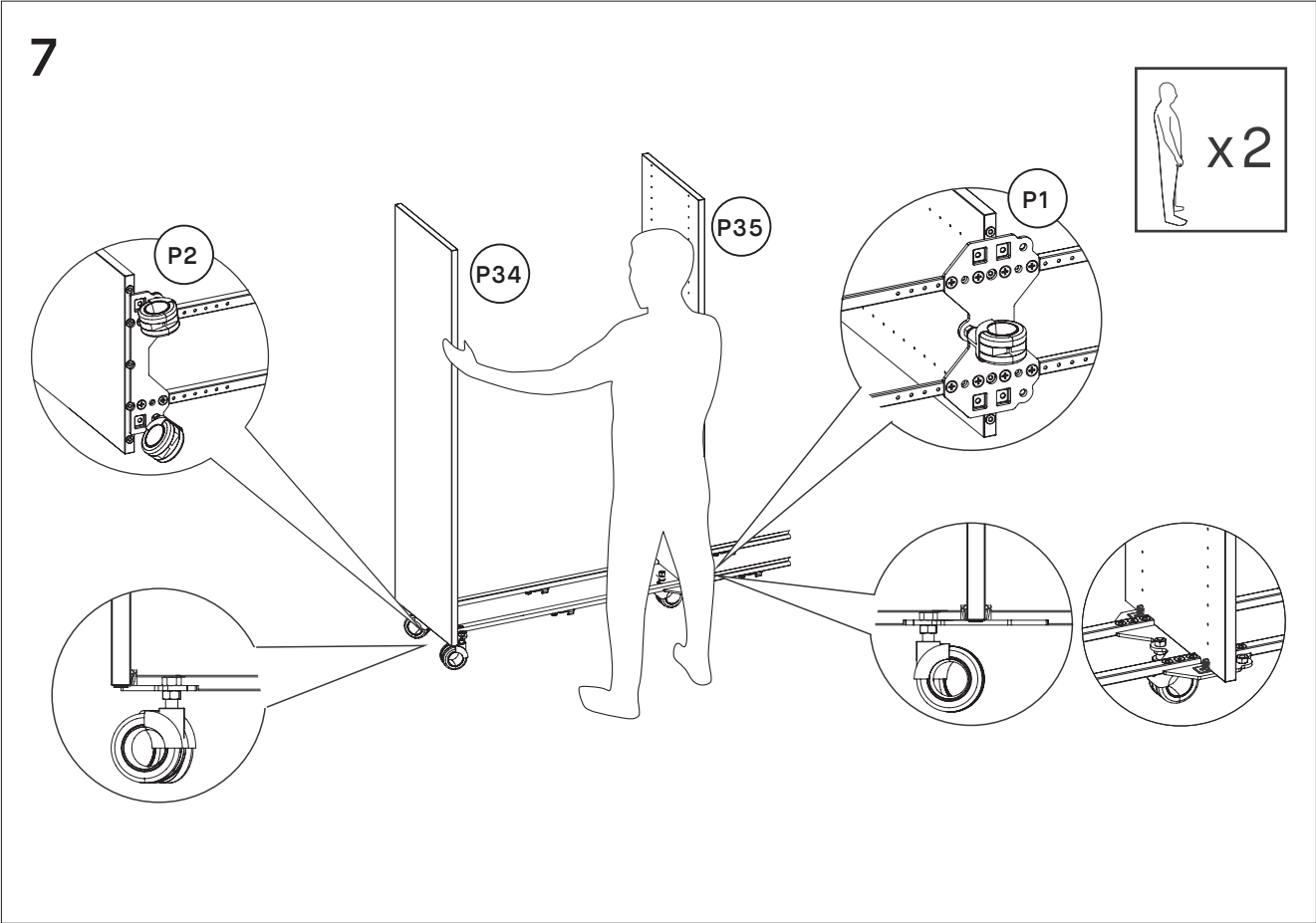
The metal shelf supports (P13) are there to hold the bottom boards. Screw the supports into all sidewalls as shown above (using screw P14). Please check your configuration to figure out where to screw in the support. You need to use them wherever you placed a board. Please refer to the “Don’t forget to measure” tip from the “Introduction” chapter on page 10 for details on how to position the metal shelf supports correctly.

6

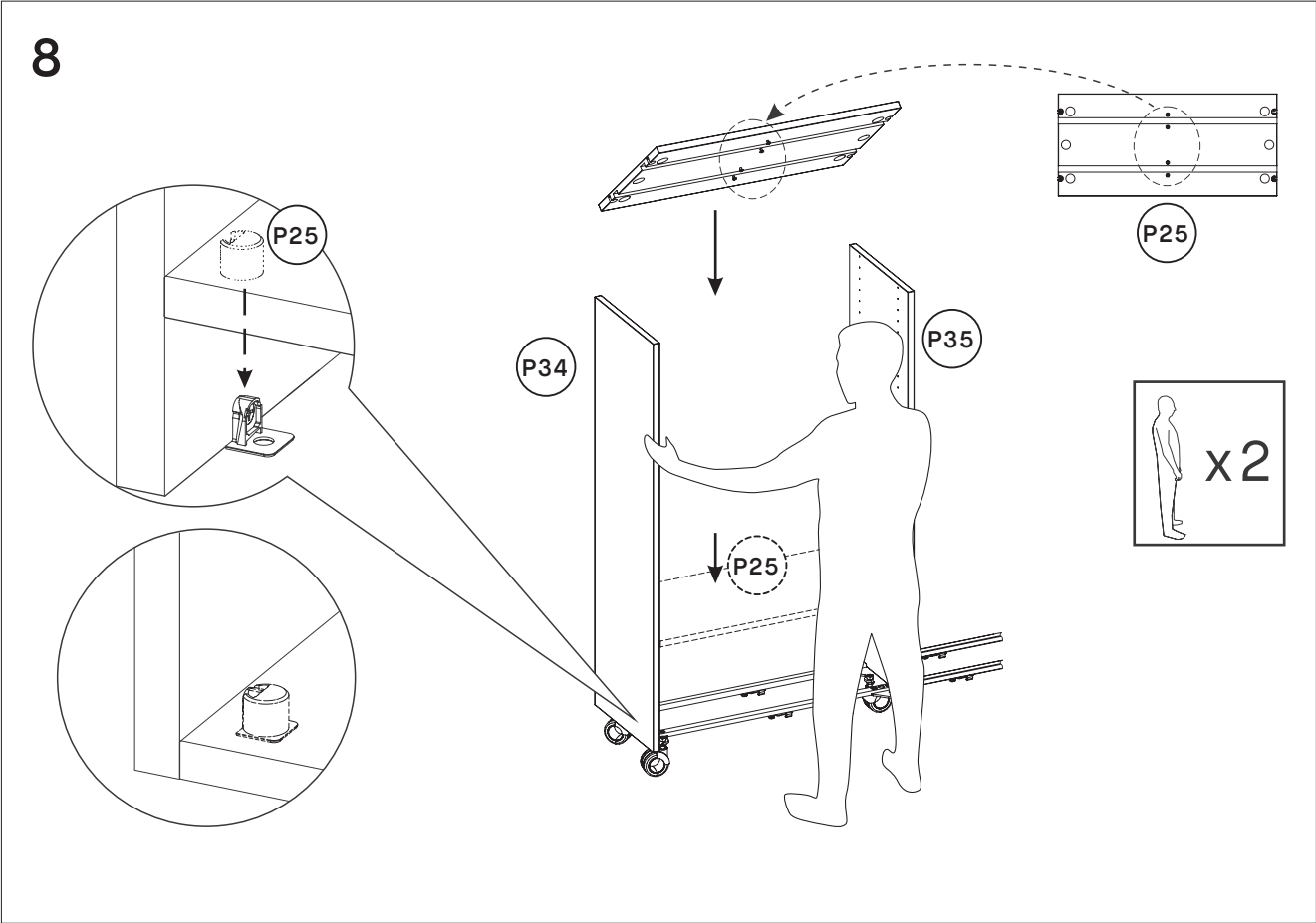


Now prepare the bottom boards to be connected with the existing construction. Screw in distancer **P11** and pad **P10** to the bottom boards **P25** by using the screw **P12** (3,5x25mm).

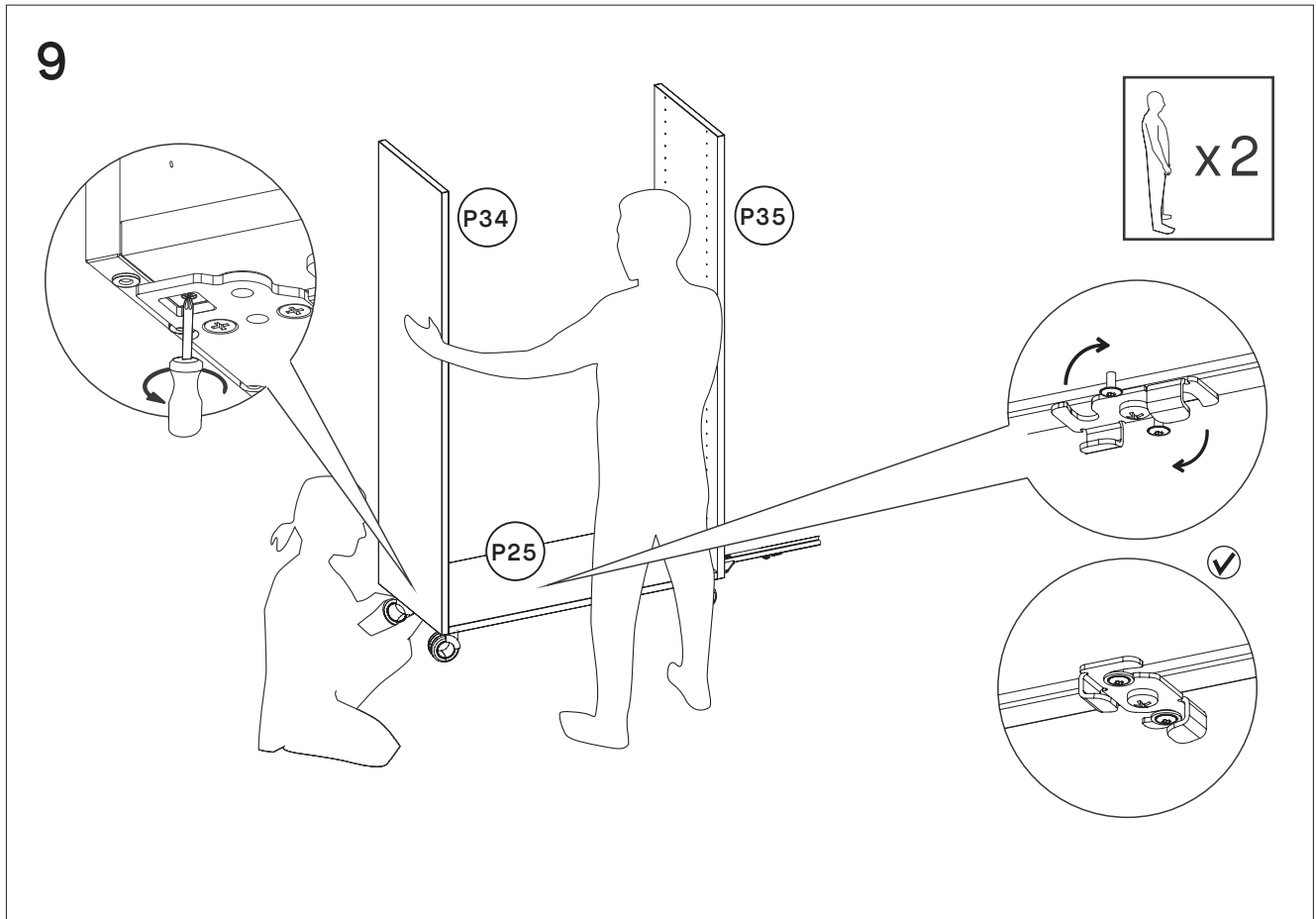




Now stick the first two sidewalls into their platform: The outer sidewalls go into the end of the single end platform **P2** and the inner sidewall in the middle of the double platform **P1**.

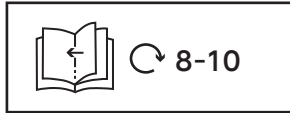


Place bottom boards **P25** on the platform by joining it to the sidewalls **P34/P35** with additional help.

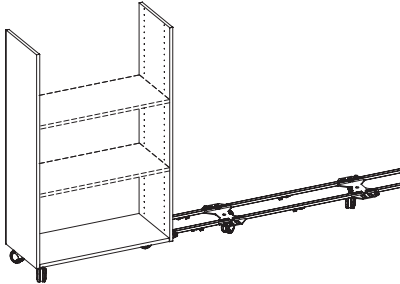


Screw in the sidewalls **P34/P35** to the bottom boards and turn the hinge (lock) underneath the bottom board to connect the rails with the board. You should hear a ‘click’ sound once the lock is in its final position.

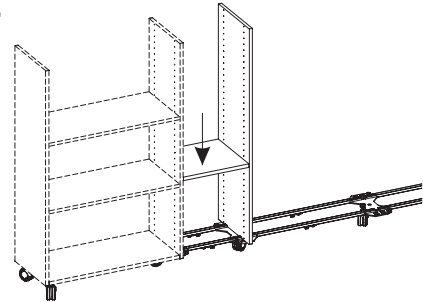
10



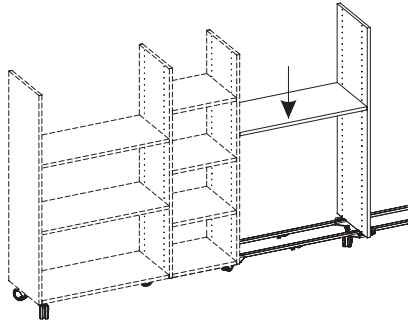
1



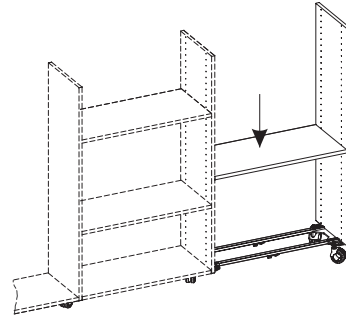
2



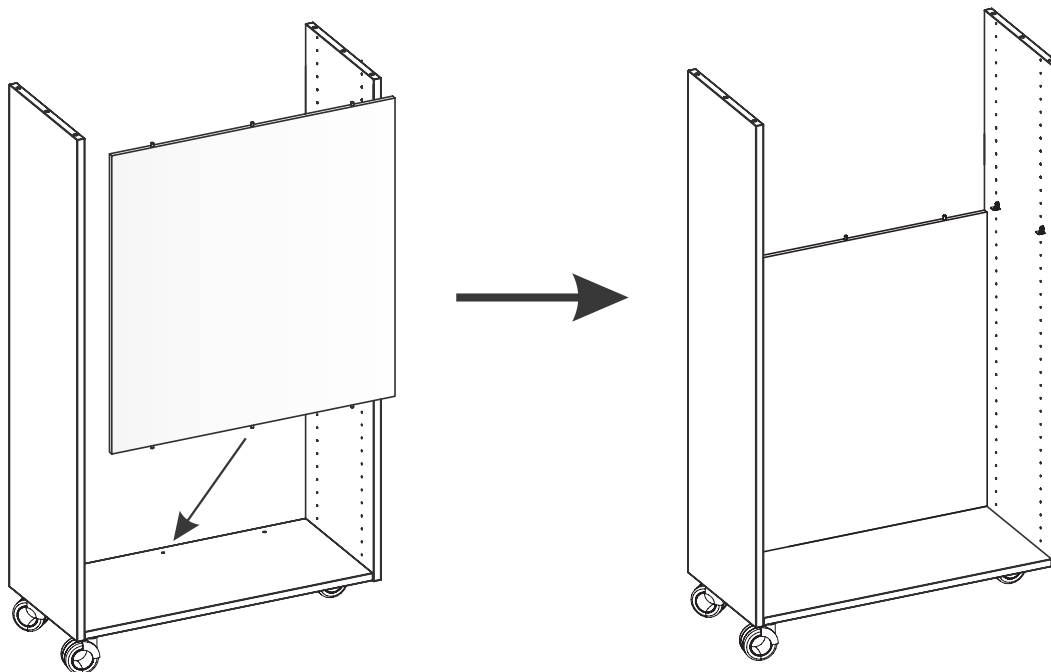
3



4



NOTE: The steps 8 - 10 go together and have to be performed multiple times, if your configuration requires it (depending on the number of sidewalls you have ordered). Please connect two sidewalls on the left-hand side of your product with their platform (step 8), mount the bottom board in the middle of them (step 10) and finally lock the bottom platform with the rails (step 10). Repeat steps 8 to 10 by adding one sidewall at a time, until you reach the outer sidewall on the right-hand side of your product.

11

NOTE: every compartment (section out of two sidewalls and their connecting boards) needs at least one backwall to guarantee stability. Installing backwalls will be covered in the following pages.

NOTE: please do not attach your furniture to the wall nor level it, as explained in step 3 and 9-11 in the following pages.