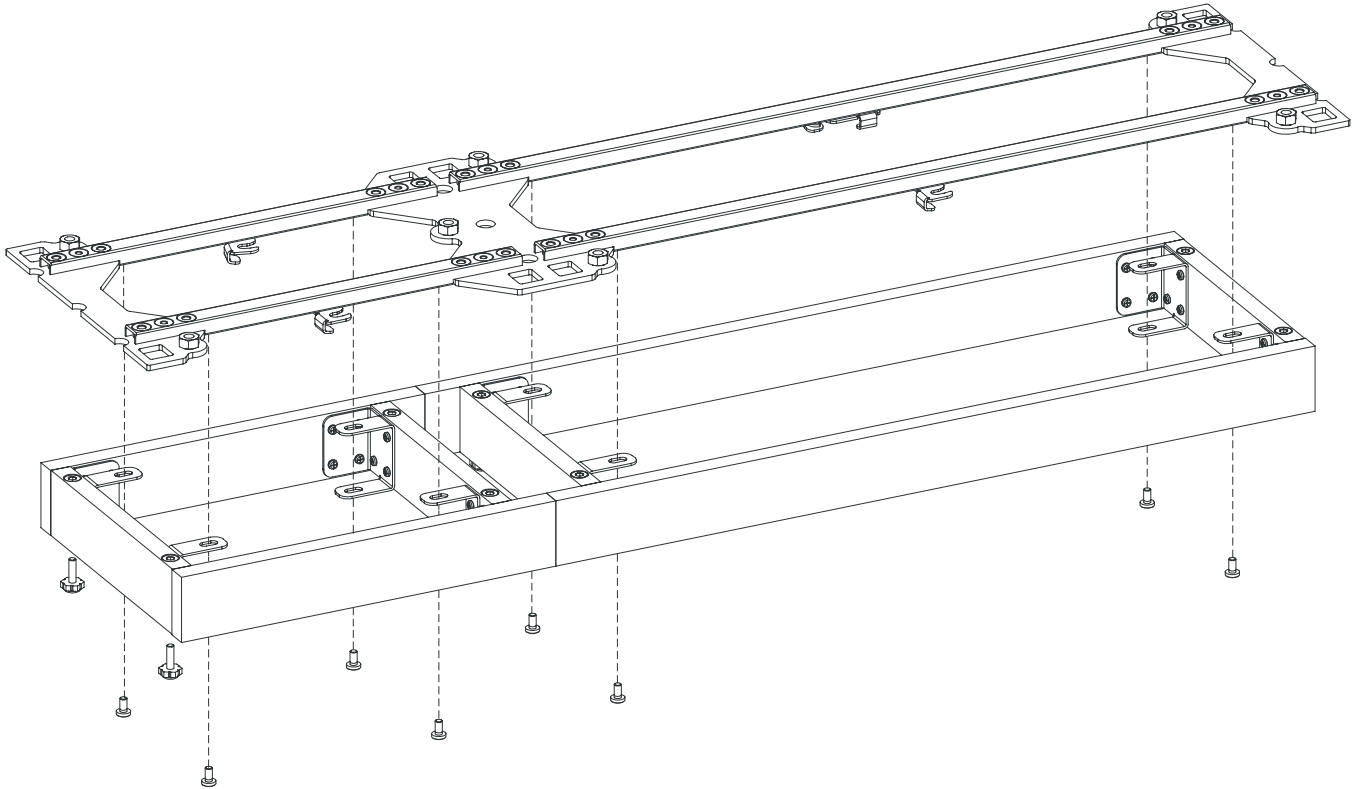


LYFT LEGS

FOR GRYP

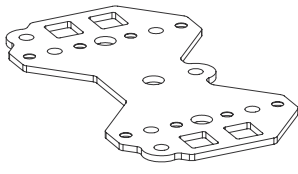


You will build something similar to this.

Here are the parts you will need.

P1

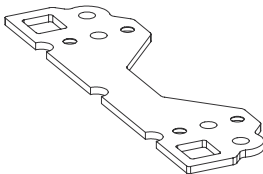
x1
or more depending
on your configuration



Leg Platform Plate (Double-sided) 101.173.00

P2

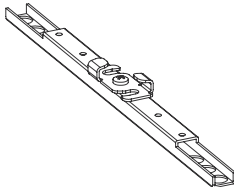
x2
for each end of
the platform



Leg Platform Plate (Single-sided) 101.173.01

P3

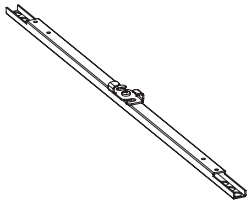
x1
or more depending
on your configuration



Platform Profile (37cm) 101.174.00

P4

x1
or more depending
on your configuration



Platform Profile (73cm) 101.174.01

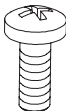
P7



8x14

Flat head screw 8 x 14mm 902.100.21

P8



6x16

Pan head screw 6 x 16mm 902.100.16

P13



Metal shelf support 901.100.04

P14



3x10

Screw 3 x 10mm 901.100.05

P10



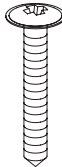
Screw pad 902.100.13

P11



Screw distancer 902.100.15

P12

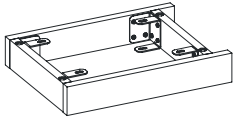


3,5 x 25

Truss screw 3,5 x 25mm 902.100.12

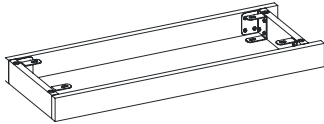
901.100.99

P15



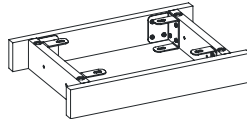
LYFT Exterior socle 37 cm
101.163/263.xx

P16



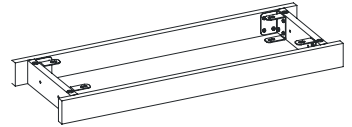
LYFT Exterior socle 73 cm
101.164/264.xx

P17



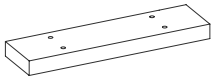
LYFT Interior socle 37 cm
101.160/260.xx

P18



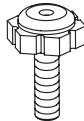
LYFT Interior socle 73 cm
101.161/261.xx

P19



LYFT Socle attachment
101.162/262.xx

P107



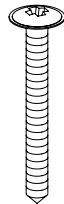
Furniture feet M6x25
901.100.40

P108



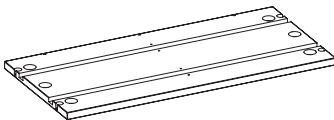
6 x 12
Screw 6 x 12 mm
902.100.39

P22



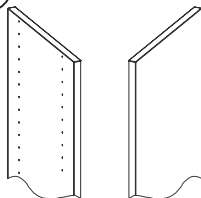
4,5 x 40
Truss screw 4,5 x 40 mm
902.100.24

P25



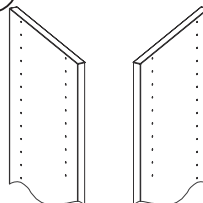
Bottom Board
101.171-172.xx, 101.441-442.xx

P34

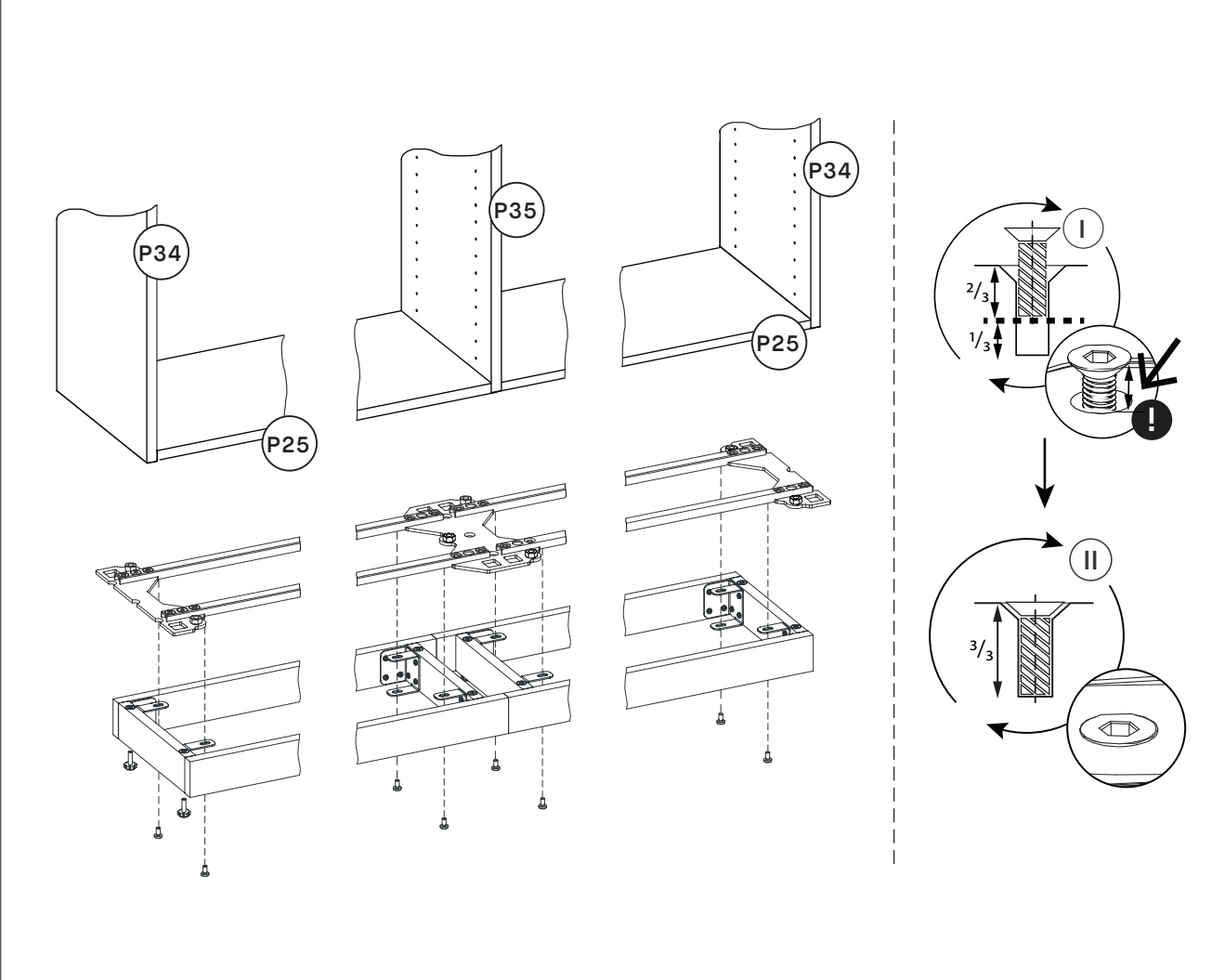


Outer Sidewalls
101.100-105.xx/ 101.400-406.xx

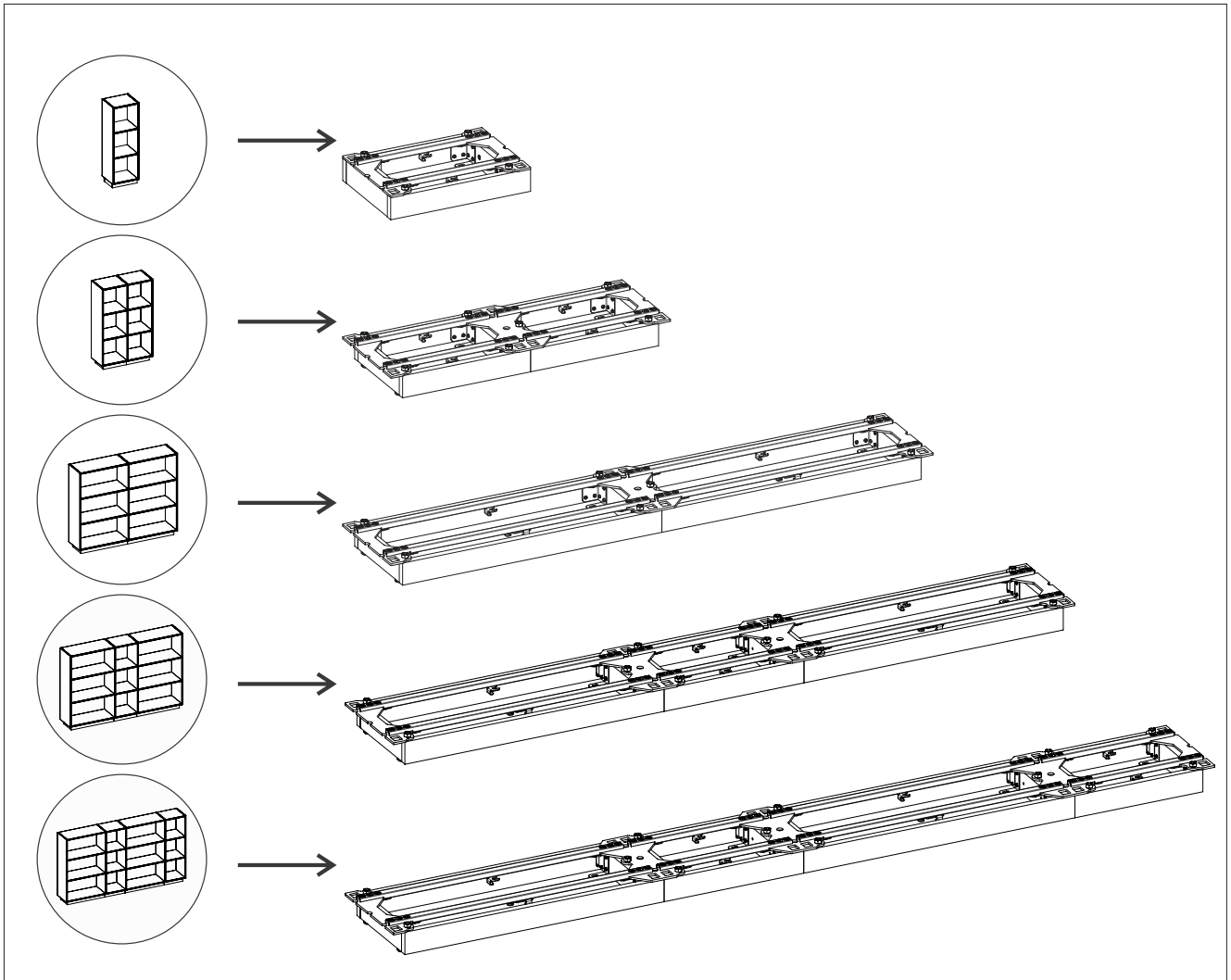
P35



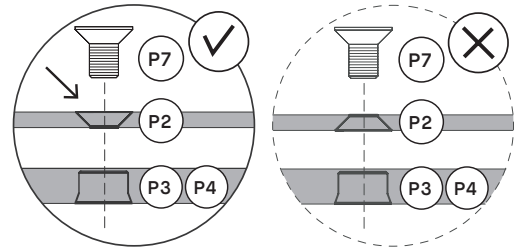
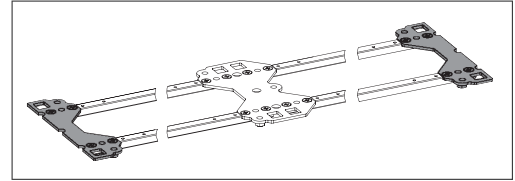
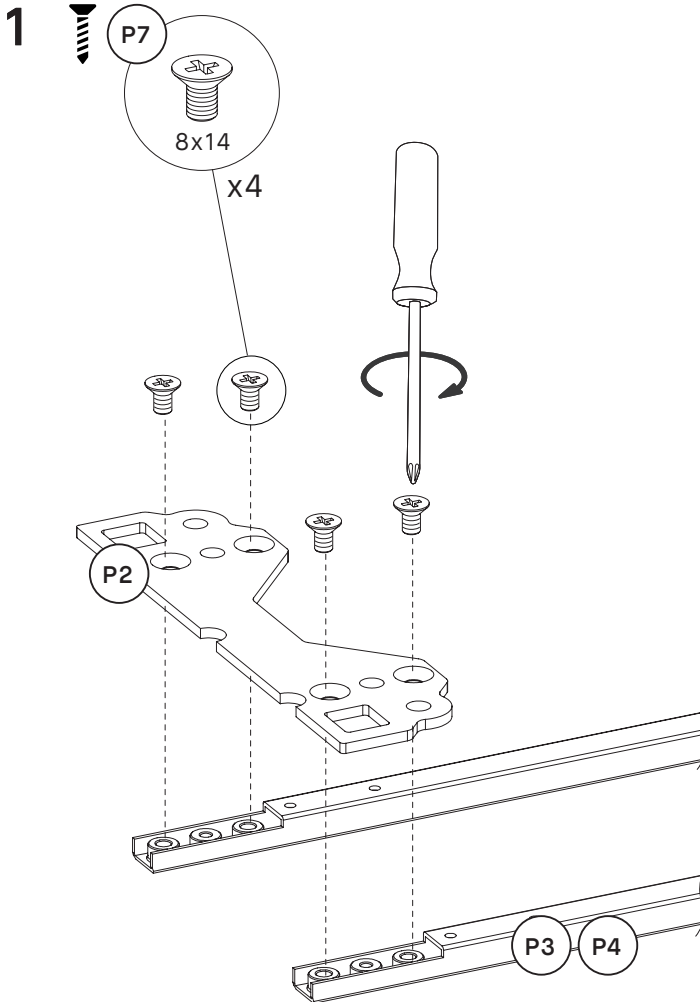
Inner Sidewalls
101.106-111.xx/ 101.407-413.xx



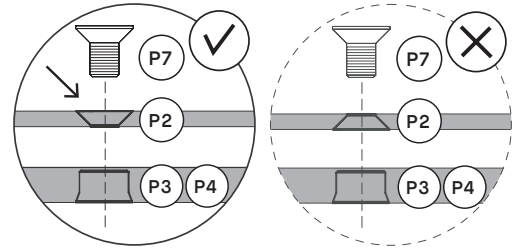
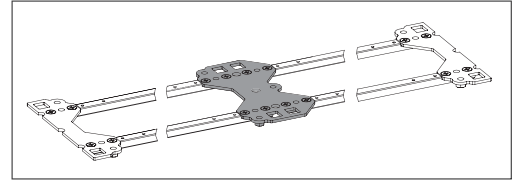
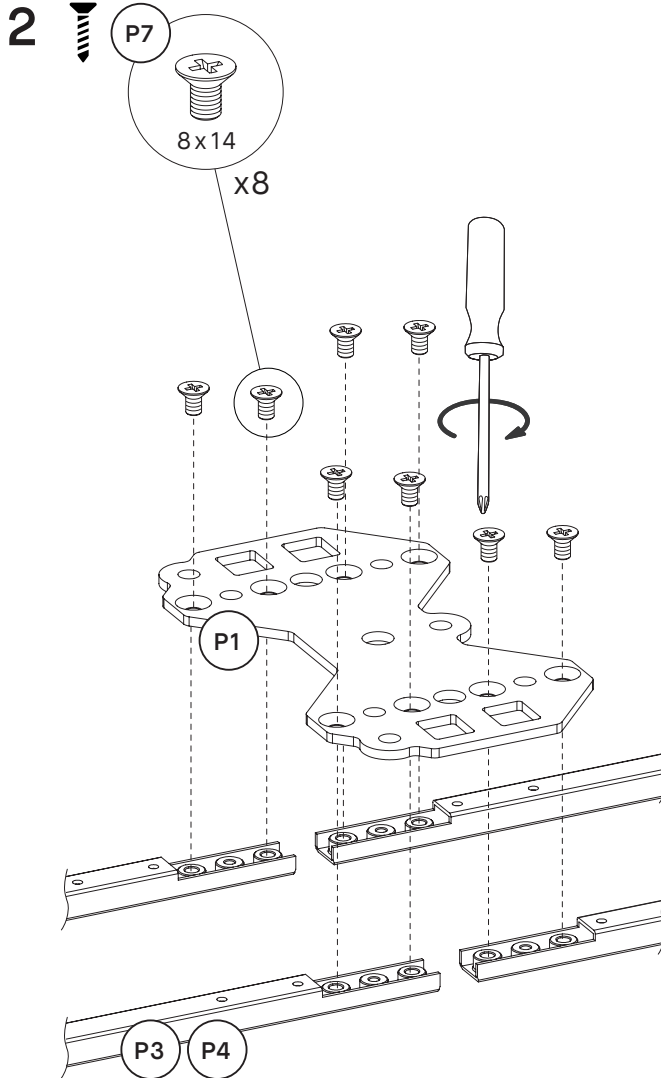
Overall: the single platforms belong below the outer sidewalls and the double platform(s) belong below the inner sidewall(s).



Have a look at the example constructions on the left and how the leg construction for these examples look like on the right. Find the one construction that matches your design the best and assemble the leg construction accordingly.



Prepare installment of LYFT leg below outer sidewall: connect single end platform **P2** and two profiles of **P3** or **P4** (depending on configuration) with the screw **P7**. Pay attention to the illustration (above): make sure to connect the platform from the right side.



Prepare installment of support leg below inner sidewall: connect double platform **P1** and two profiles of **P3** or **P4** (depending on configuration) with the screw **P7**. Pay attention to illustration (above): make sure to connect the platform from the right side.

3

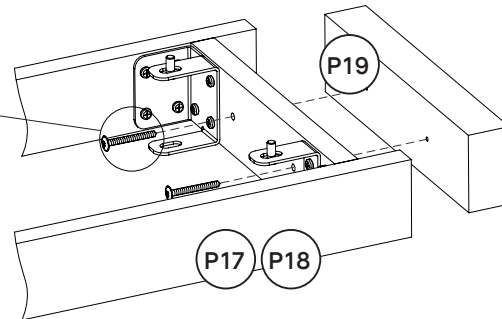
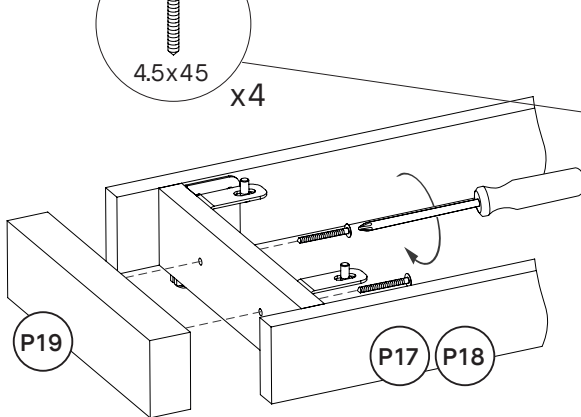
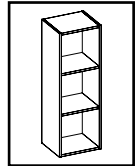


P22

4.5x45

x4

TIPS In case your product has only two sidewalls



In case your furniture has not more than two sidewalls: Connect inner socle attachment **P19** with your socles **P17/P18** (depending on configuration) using screw **P22**.

4

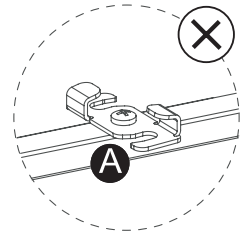
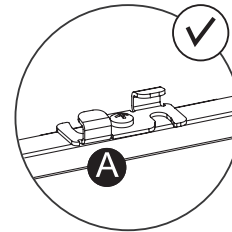
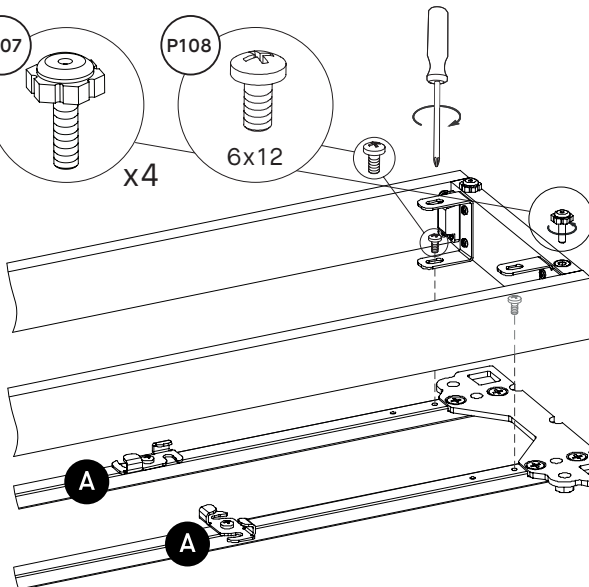


P107

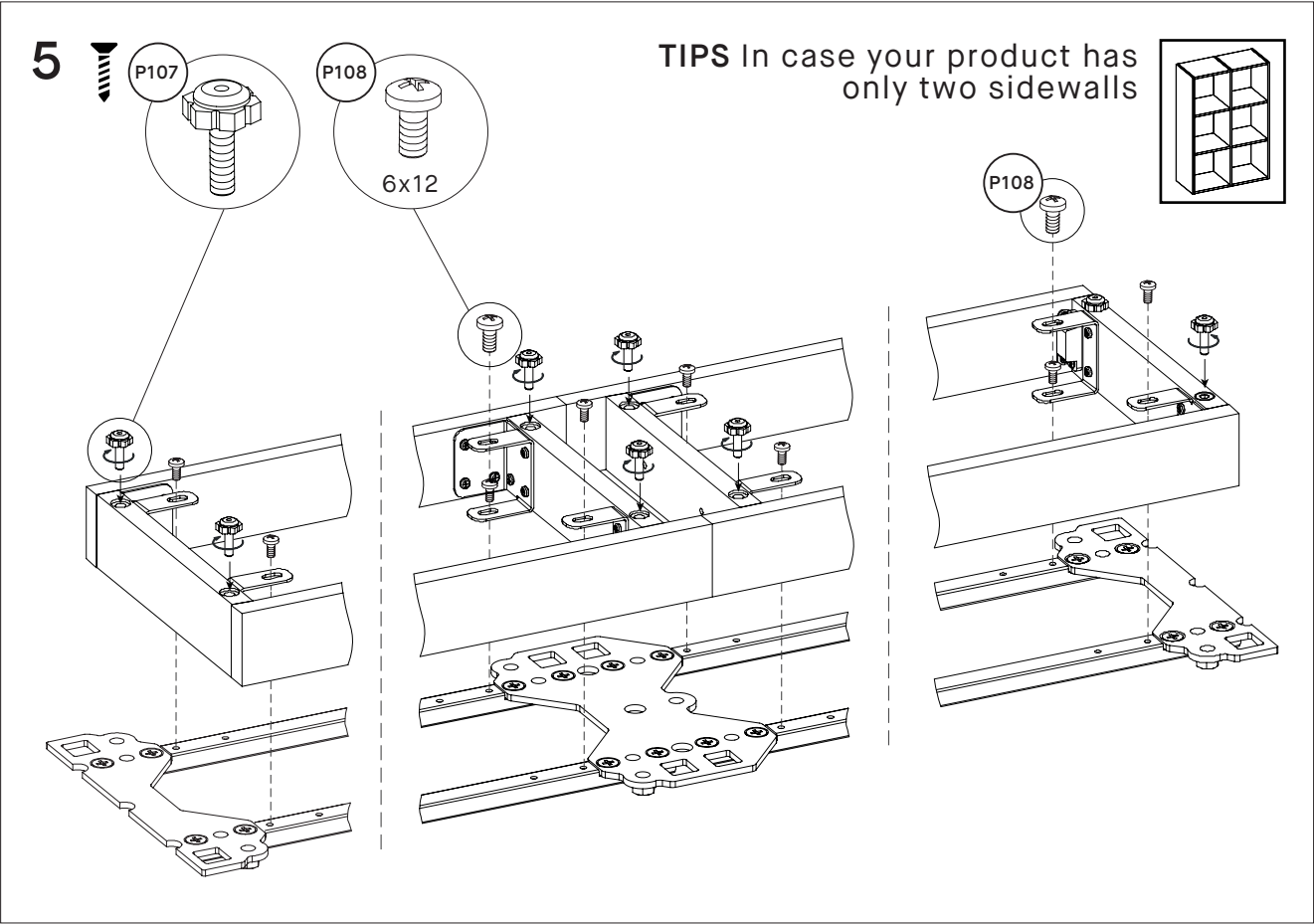
P108

6x12

x4

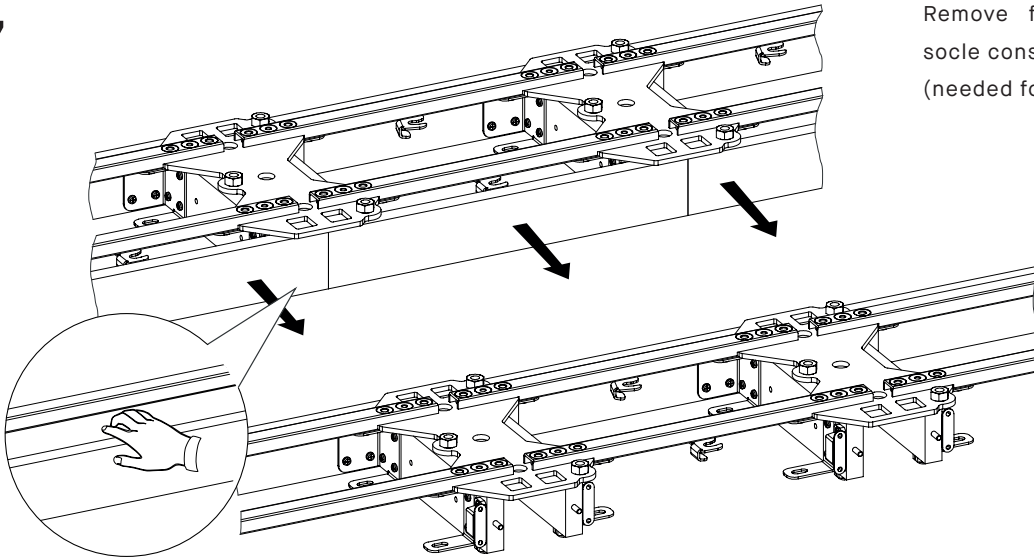


In case your furniture has not more than two sidewalls: connect socle construction with single end platform **P2** as seen above, using screw **P21**. Make sure to match position of hinge as seen in A (on the right side).



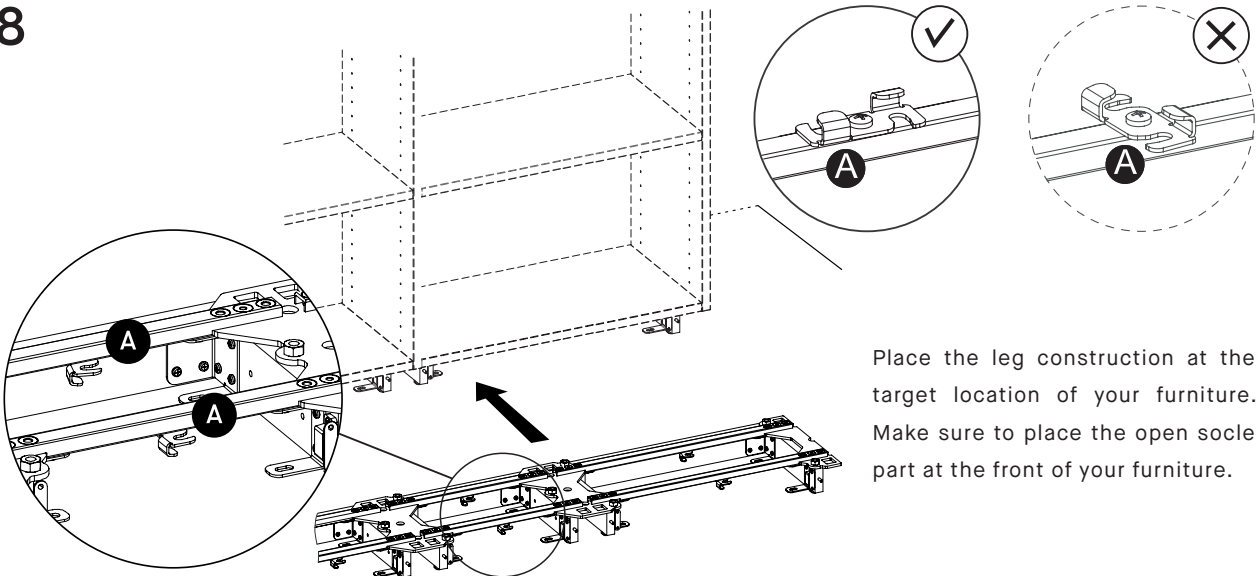
In case your furniture has more than two sidewalls: connect socle construction with platforms using screw **P21** as seen above.

7

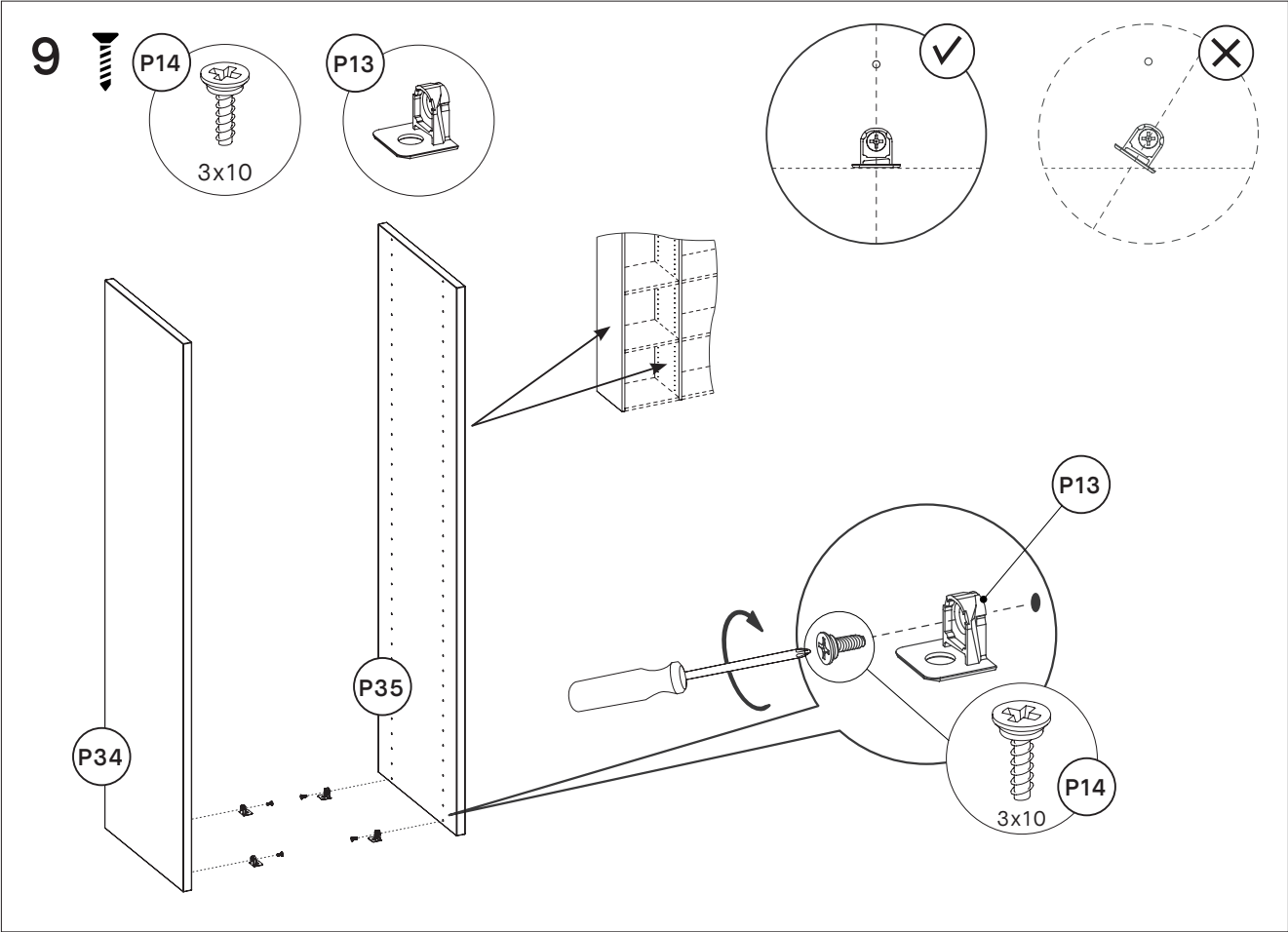


Remove front panel from
socle construction
(needed for step 14).

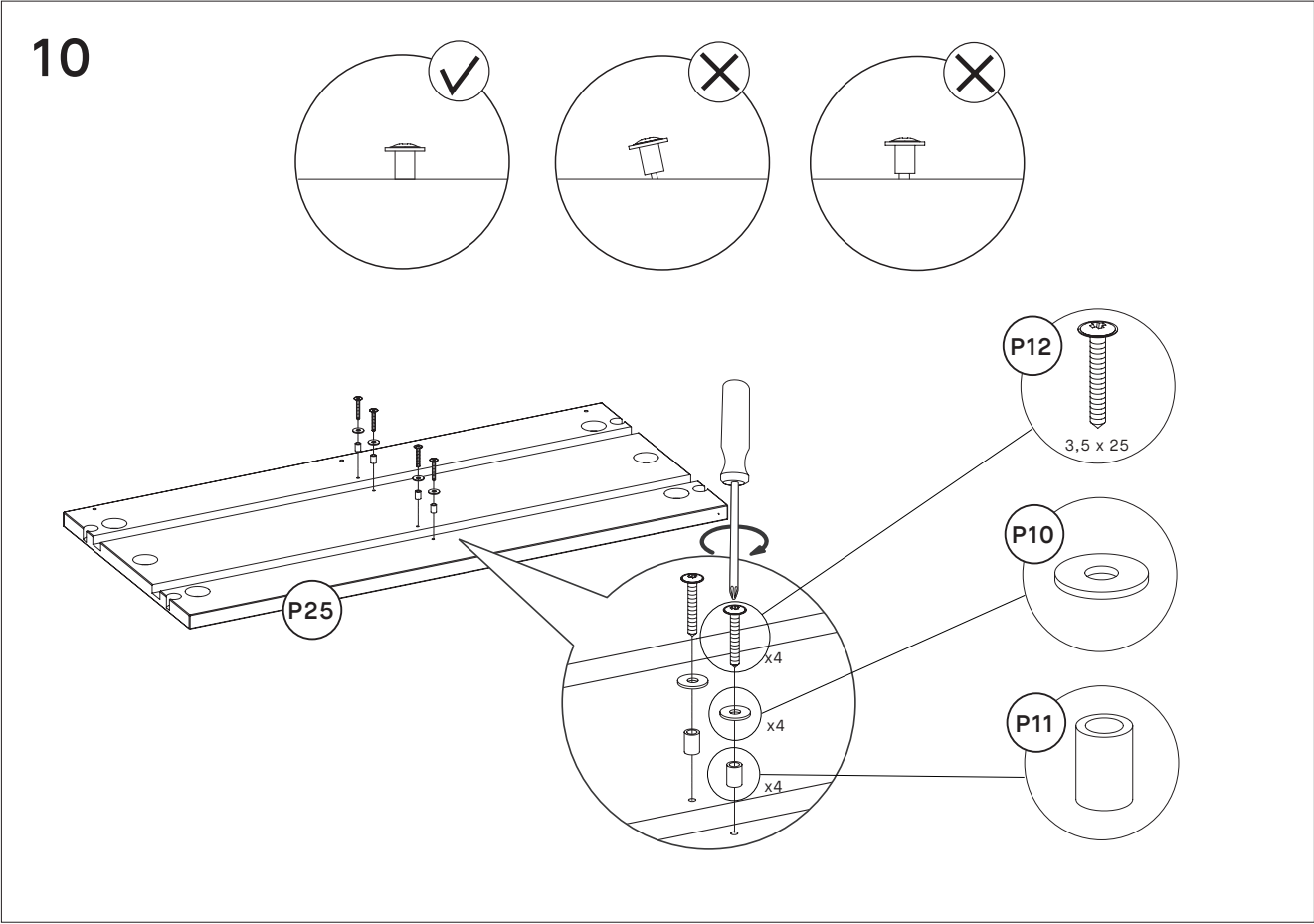
8



Place the leg construction at the
target location of your furniture.
Make sure to place the open socle
part at the front of your furniture.

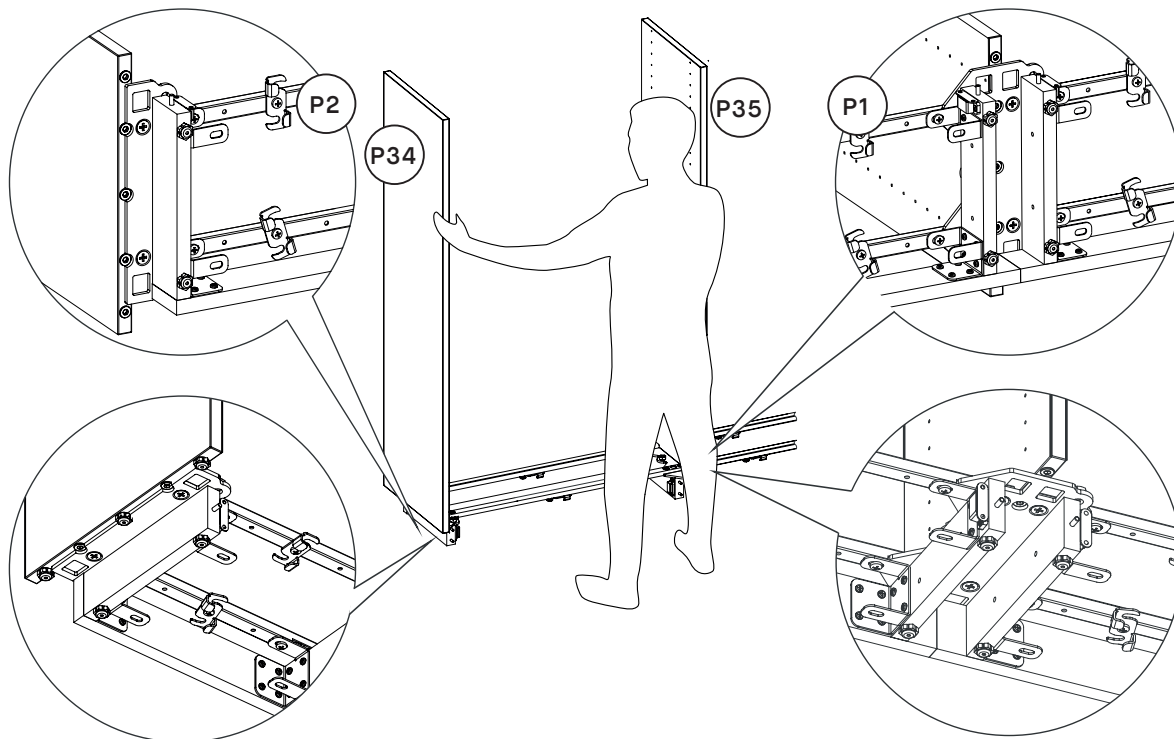


The connectors tabs **P13** are there to hold the bottom boards. Screw them into all sidewalls as shown above (using screw **P14**).

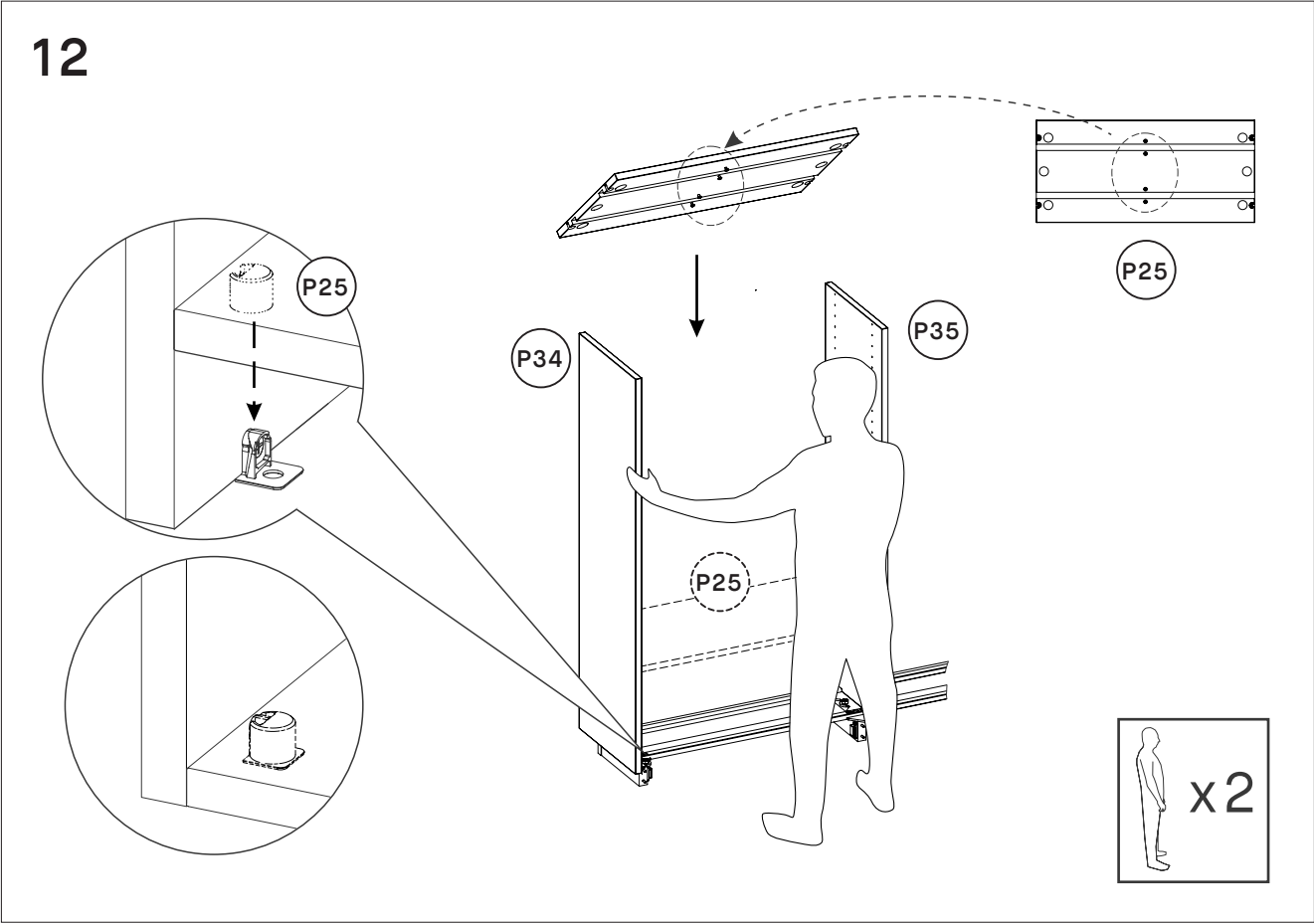


Screw in distancer **P11** and pad **P10** to the bottom boards **P25** by using the screw **P12** (3,5 x 25mm).

11

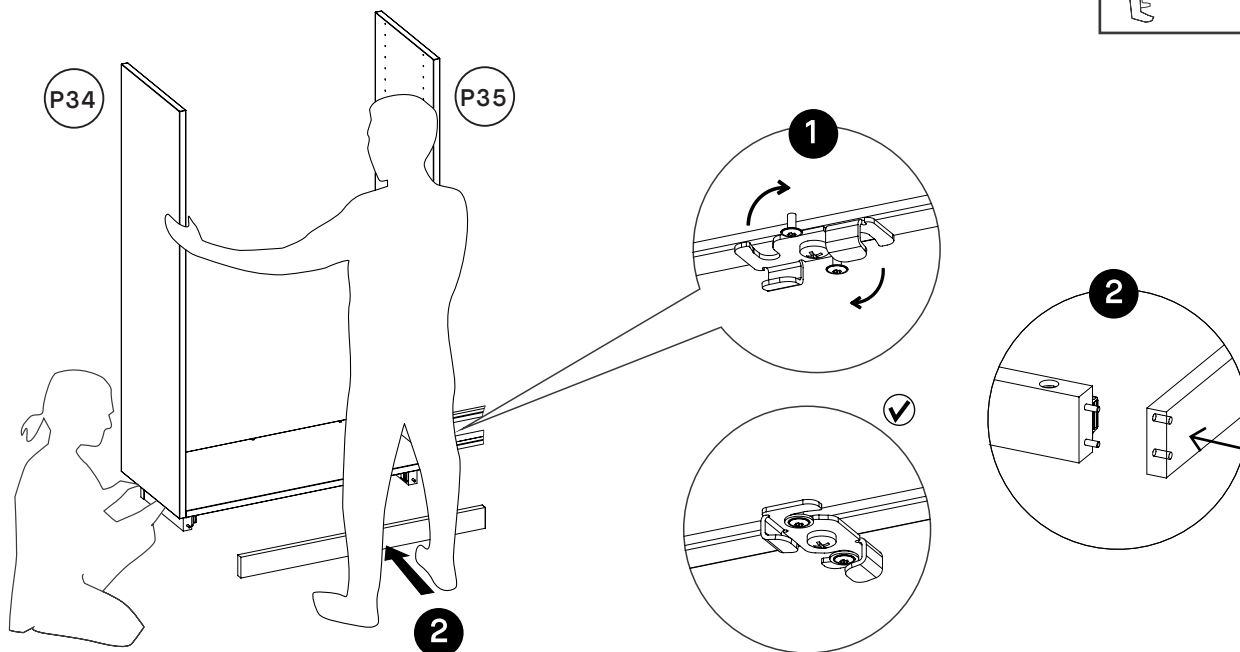
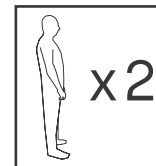


Now stick the first two sidewalls into their platform: the outer sidewalls go into the end of the single end platform **P2** and the inner sidewall in the middle of the double platform **P1**.



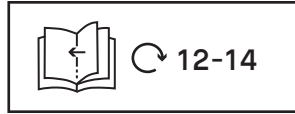
Place bottom boards **P25** on the platform by joining it to the sidewalls **P34/P35** with additional help.

13

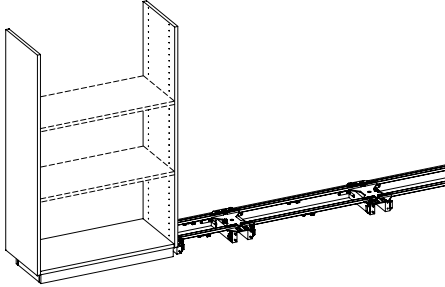


1. Lock the hinge underneath the bottom board to connect the rails with the board. You should hear a 'click' sound once the lock is in it's final position.
2. Once this is done, put the front part(s) of the socle back into place (as they have been removed in step 7).

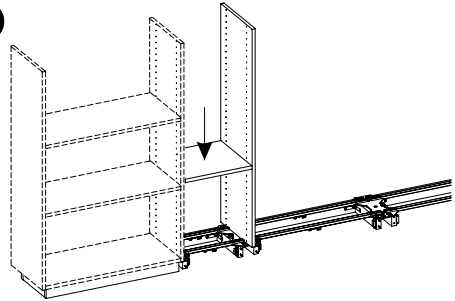
14



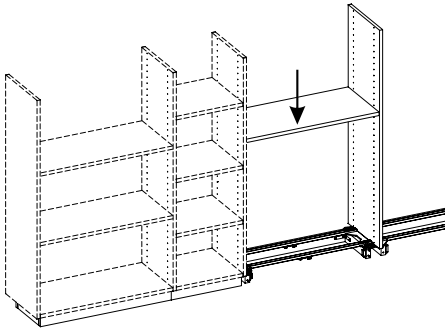
①



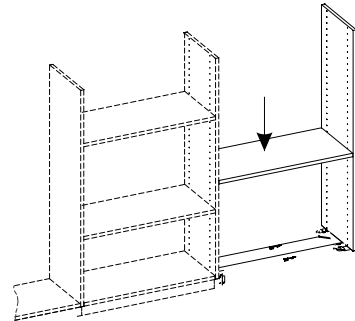
②



③



④



NOTE: Step 12 to 14 go together and have to be performed multiple times, in case your configuration requires it (depending on the number of sidewalls you have ordered). Please connect two sidewalls on the left side of your product with their platform (step 12), mount the bottom board in the middle of them (step 13) and finally lock the bottom platform with the rails (step 14). Repeat steps 12 to 14 by adding sidewall by sidewall, until you reach the outer sidewall on the right side of your product.