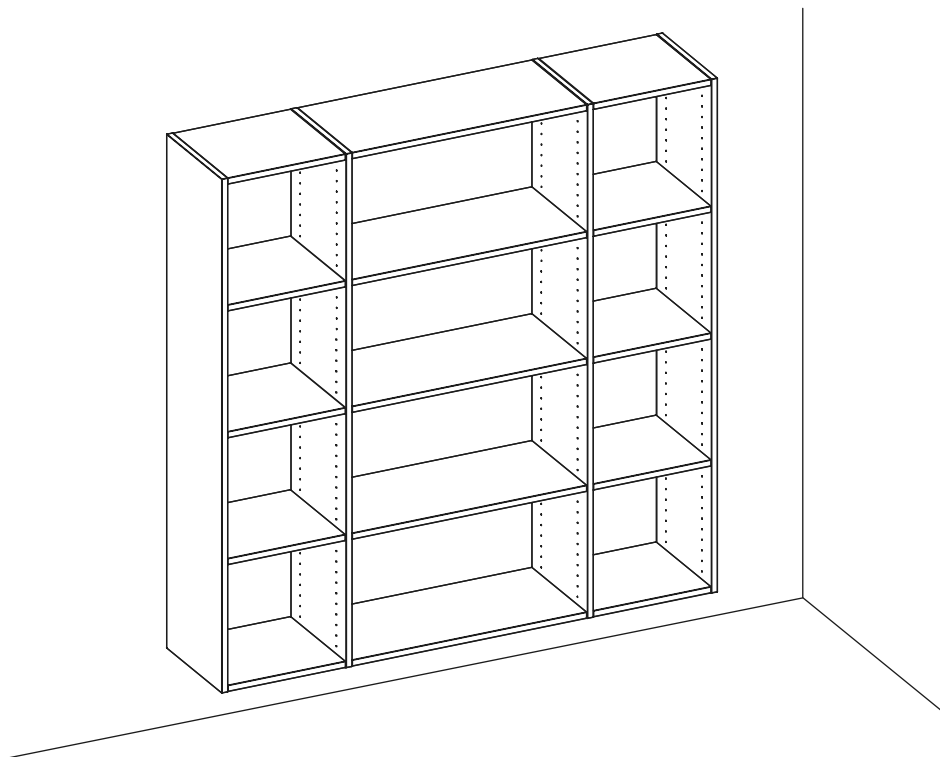


# AYR WITH BACKWALLS

FOR GRYP



You will build something similar to this.

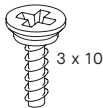
Here are the parts you will need.

P13



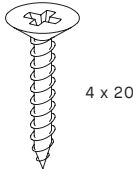
Metal shelf support  
901.100.04

P14



Screw 3 x 10mm  
901.100.05

P65



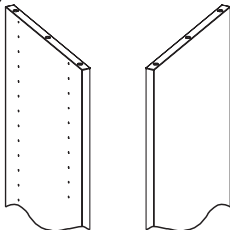
Screw 4 x 20mm  
901.101.33

P31



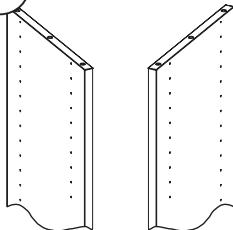
Hex key size 6  
901.300.02

P34



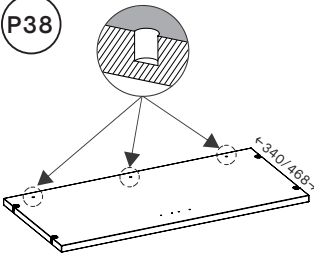
Outer sidewalls  
101.100/200.xx, 101.101/201.xx  
101.102/202.xx, 101.103/203.xx  
101.104/204.xx, 101.105/205.xx

P35



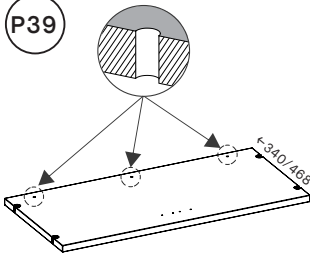
Inner sidewalls  
101.106/206.xx, 101.107/207.xx  
101.108/208.xx, 101.109/209.xx  
101.110/210.xx, 101.111/211.xx

P38



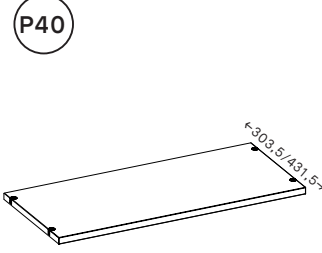
Top board  
101.140/240.xx, 101.144/244.xx

P39



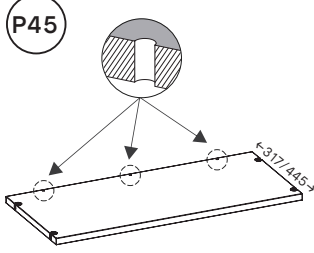
Middle and bottom board  
101.142/242.xx, 101.146/246.xx

P40



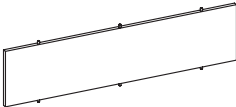
Board behind fronts  
101.143/243.xx, 101.147/247.xx

P45

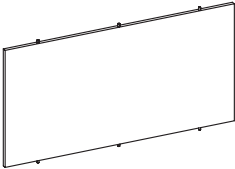


Board behind tall fronts  
101.143/243.xx, 101.147/247.xx

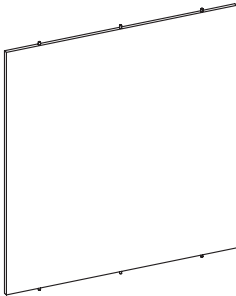
P41



Backwall 726x173  
101.150/250.xx



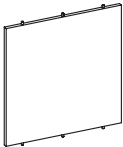
Backwall 726x365  
101.151/251.xx



Backwall 726x749  
101.152/252.xx



Backwall 365x173  
101.153/253.xx



Backwall 365x365  
101.154/254.xx



Backwall 365x749  
101.155/255.xx

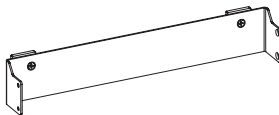
Use the dowels provided if you're about to hang the shelf on the brick wall. For other types of walls, another dowel may be needed - please consult a hardware store professional.

P99



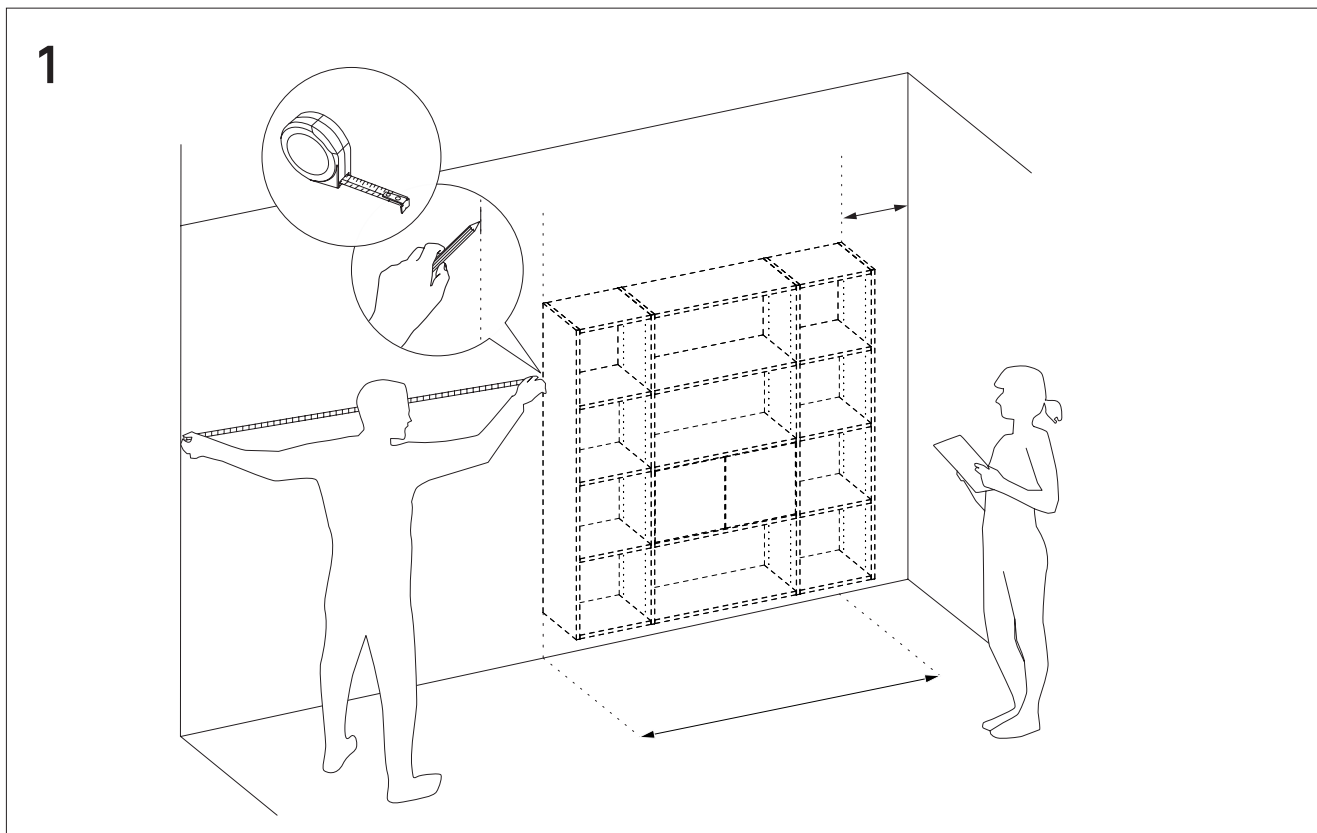
Wall hanger

P100



Shelf hanger

101.177.10-13

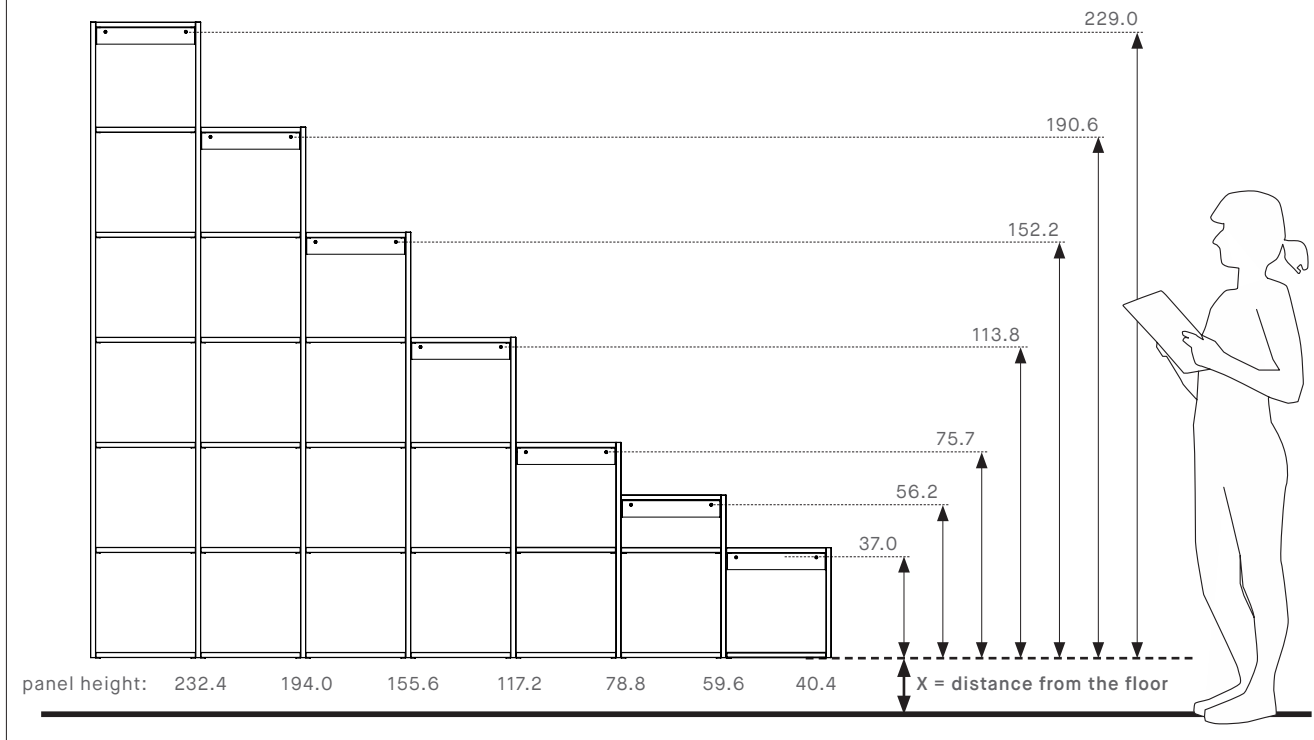


Your furniture will be fixed to your wall, therefore carefully check the final measurements of your configuration and select the desired location now. Be sure that the measurements of the desired location will fit the configuration and will leave enough room to move around comfortably during assembly.

**NOTE:** Keep in mind that you'll hang the furniture from the left towards the right side.

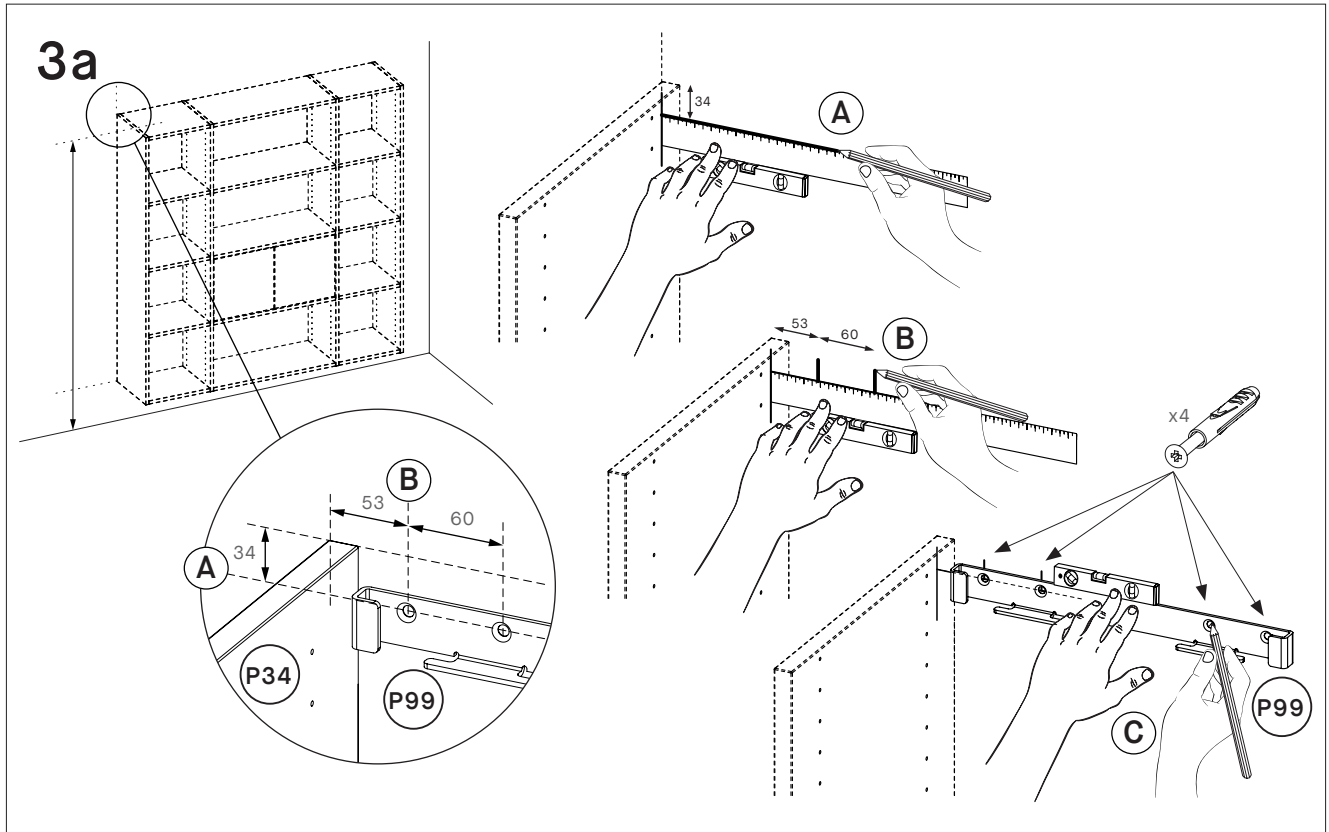
**NOTE:** You will need a minimum of 5 cm between the upper part of your configuration and the ceiling in order to adjust the hanger and install the top board. Please carefully plan the assembly, especially if your configuration has taller or shorter columns.

2



In this step you need to decide the distance between the first column of the furniture and the house floor as it determines where you will fix the hanger **P99** on the house wall.

Please have a look at measurements on the drawing above. To know at what height you should prepare the drillings to install the hanger **P99**, just add the desired height of your furniture from the floor (X) to the distance of the row of drillings from the bottom of the panel as given above.

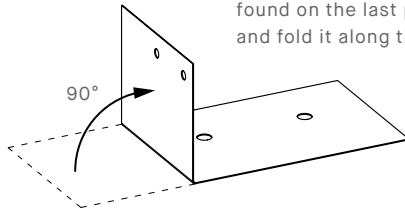


You have two possibilities to find out where to drill the holes in the wall exactly: one is to calculate them according to the dimensions given on the drawing above, another solution is described on a following page.

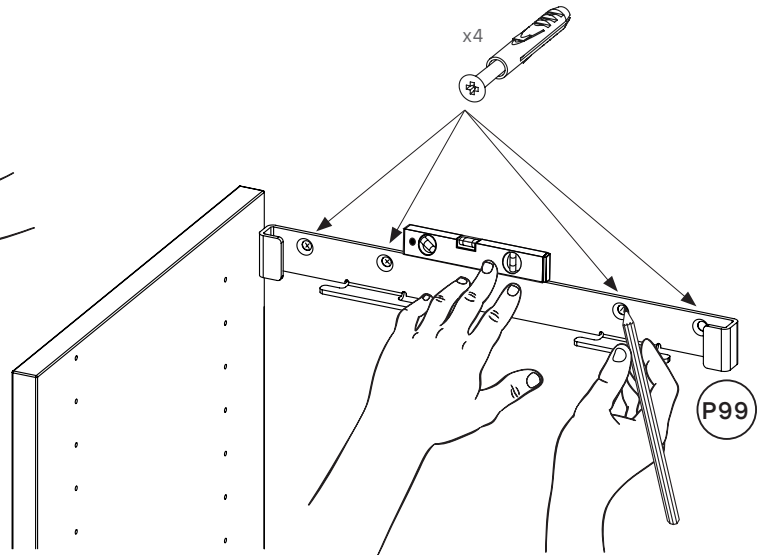
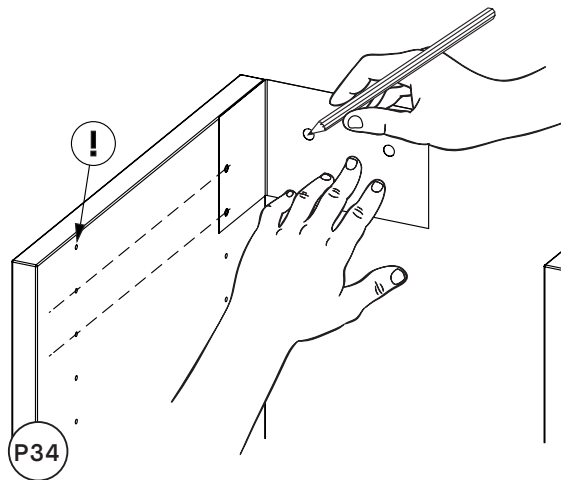
Once you determined the position of the shelf on the house wall, draw a line at a height where the hanger P99 should be installed (A). Mark the first two drilling holes (B), according to the dimensions given above. Using the hanger **P99**, mark two additional drilling holes as needed (C). Now you're ready to install the dowels in the house wall. Once all four dowels are in place, screw the hanger into the wall firmly.

# 3b

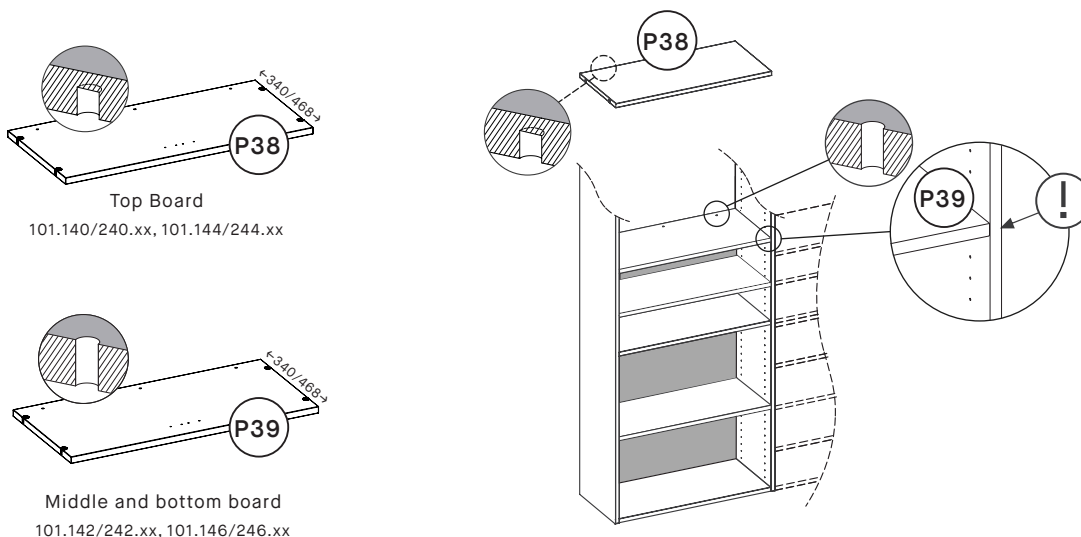
Cut out the drilling pattern that can be found on the last page of this chapter and fold it along the dashed line.



Use the dowels provided if you're about to hang the shelf on the brick wall. For other types of walls, another dowel may be needed - please consult a hardware store professional.



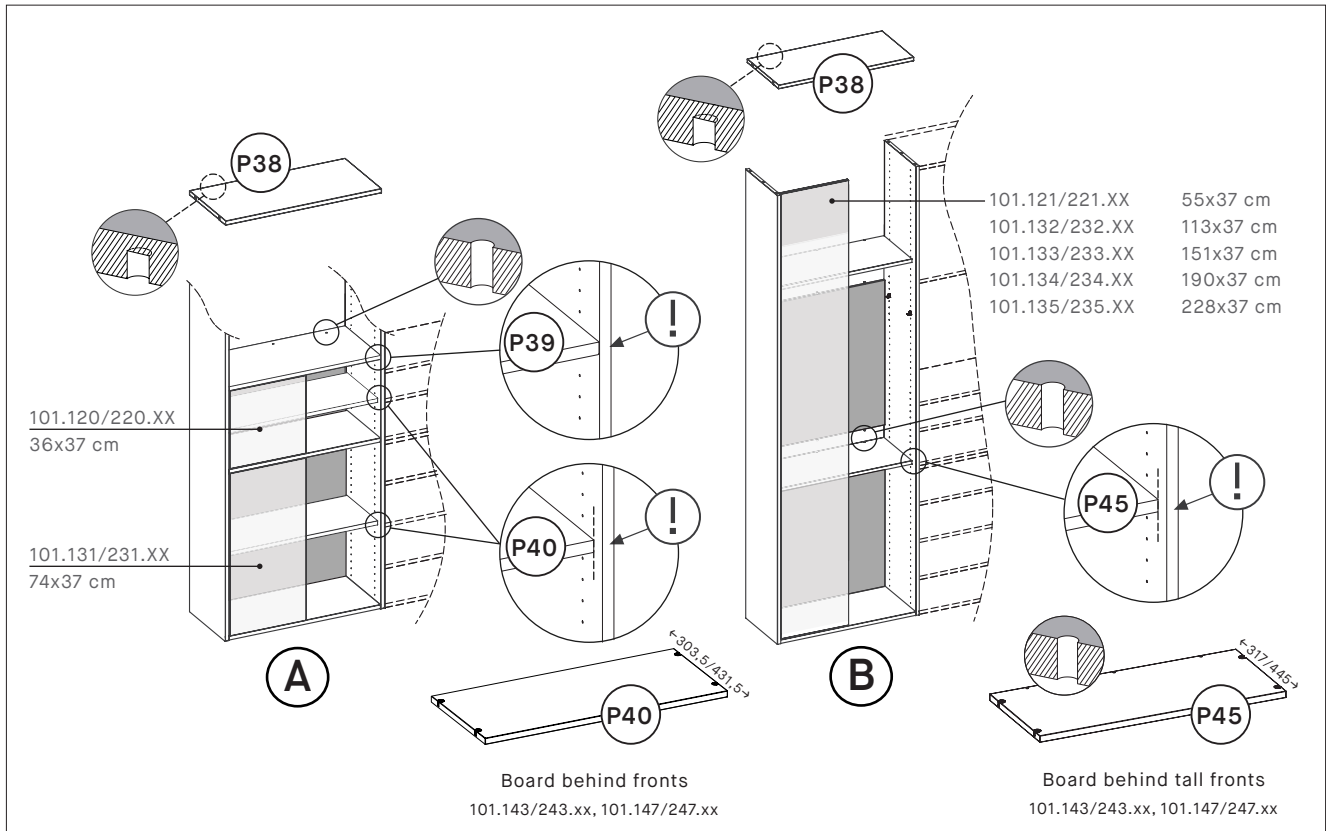
If you don't feel like calculating, you can use another method: hold the first leftmost furniture panel against the wall at desired position and place the pattern as pictured above, leaving one hole visible - this is where the top board will be fixed. Mark the position of the first two drillings on the wall through the pattern. Using the hanger **P99**, mark two additional drilling holes as needed. Remember to level the hanger properly at this step! Now you're ready to install the dowels in the house wall. Once all four dowels are in place, screw the hanger into the wall firmly.



Your configuration can be composed of multiple types of boards. Before you start assembling your configuration, please sort the boards by size and type.

Any configuration with backwalls has **P38** and **P39** boards, which are holding backwall panels in between them. They have identical depth, only difference are the holes in the back of the board, on the bottom side. **P38** is a top board, so the holes do not go all the way through the board. **P39** is meant to be installed on the bottom or in between backwall panels, so the holes are needed on both sides of the board - they are drilled through.

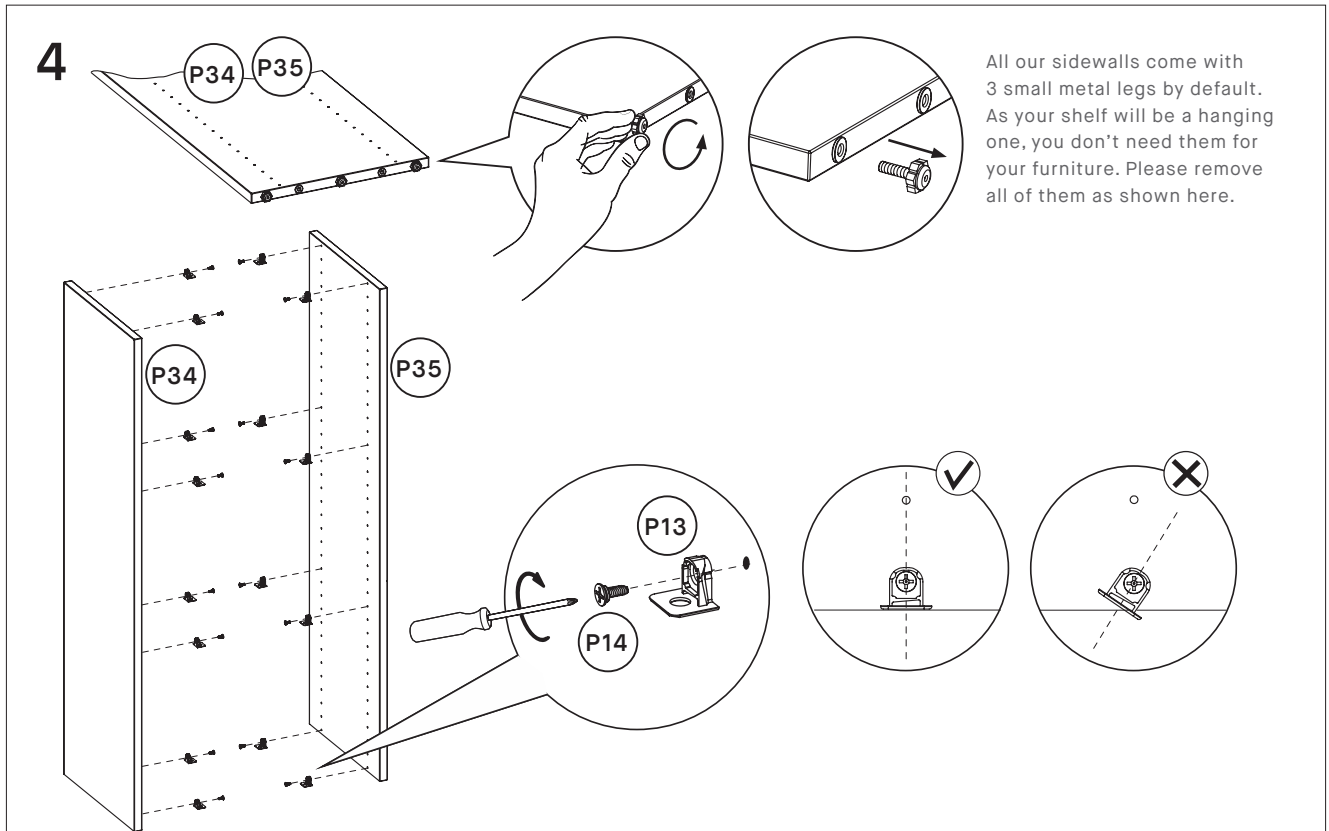




If your design has fronts, two other board types may be needed:

**A)** If your furniture has fronts of the same height as backwalls, you can put **P40** boards behind those fronts - they are shallower boards and only serve as a separator function (they do not hold the backwalls in place). You can place them freely behind those fronts.

**B)** If you have fronts of any other size, you will need to use **P45** boards that have a structural function (they hold backwalls). They are shortened in the front, because of the door panels.

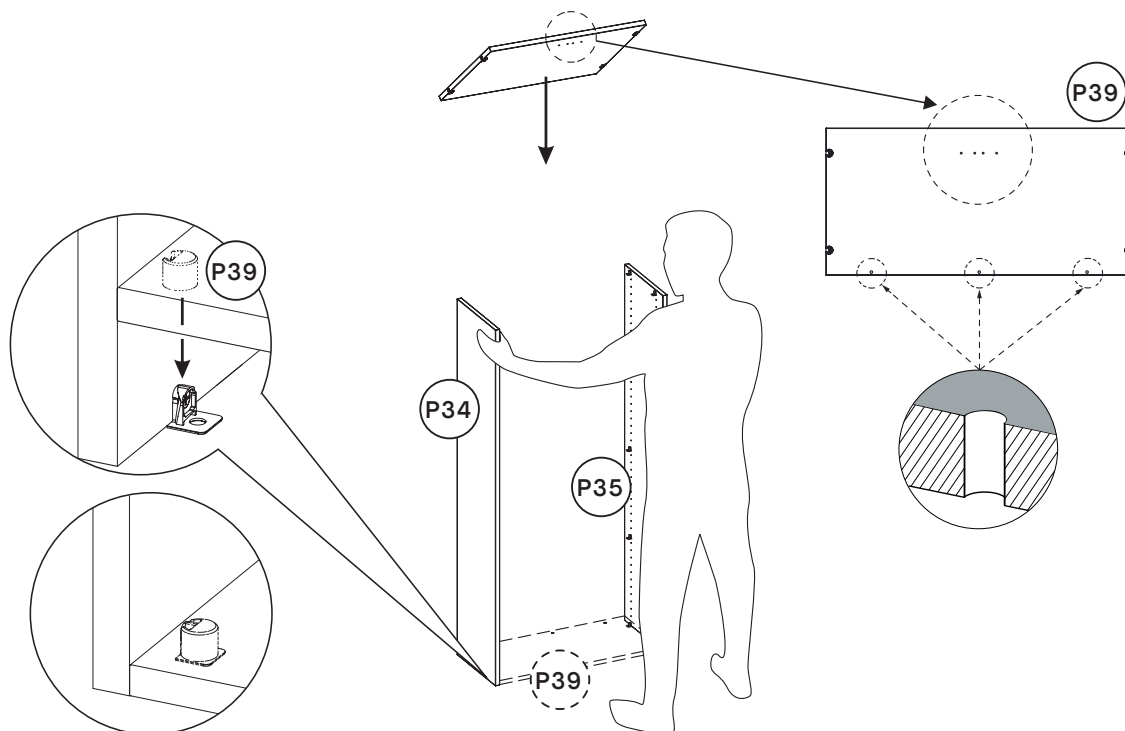


Let's start with the first two sidewalls. Place them flat on the floor and add metal supports **P13**, as shown above. These supports are there to hold the boards. You'll need them in the lowest holes to hold the bottom boards.

Please check your configuration to figure out where to screw in the support. You need to use them wherever you placed a board.

**NOTE:** Please refer to the "Don't forget to measure" tip from the "Introduction" chapter on page 10 for details on how to position the metal shelf supports correctly.

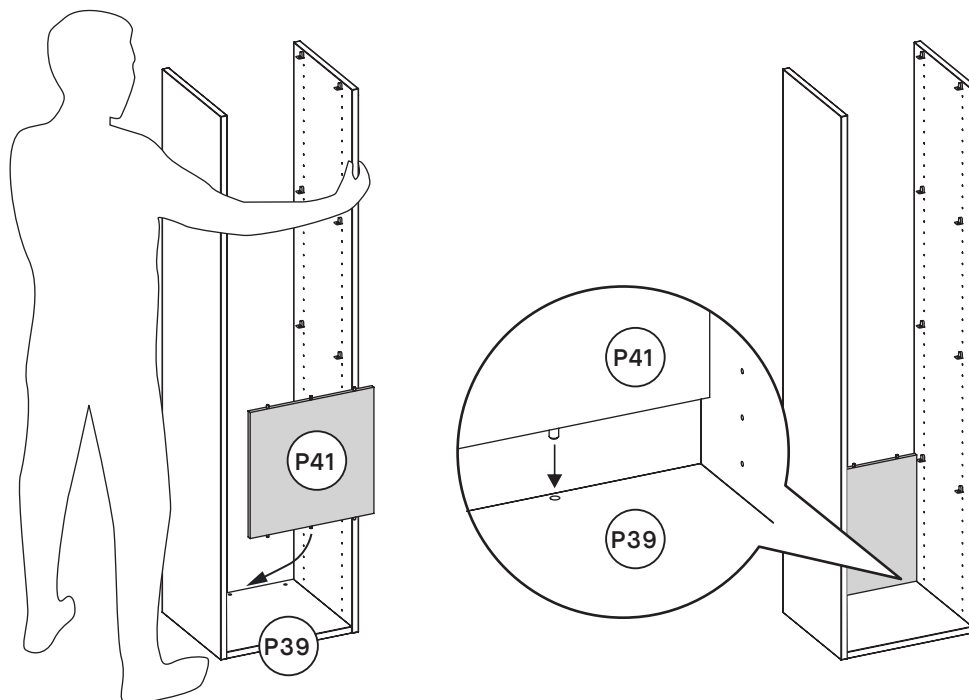
5



Add the **P39** board at the very bottom of your configuration.

All boards come with four connecting sockets that match the metal shelf supports **P13** you added in step 4. Two people are needed: one person holds the furniture walls vertically while another installs the board. Make sure to connect the board from the correct side and in the correct direction (please see the illustration above).

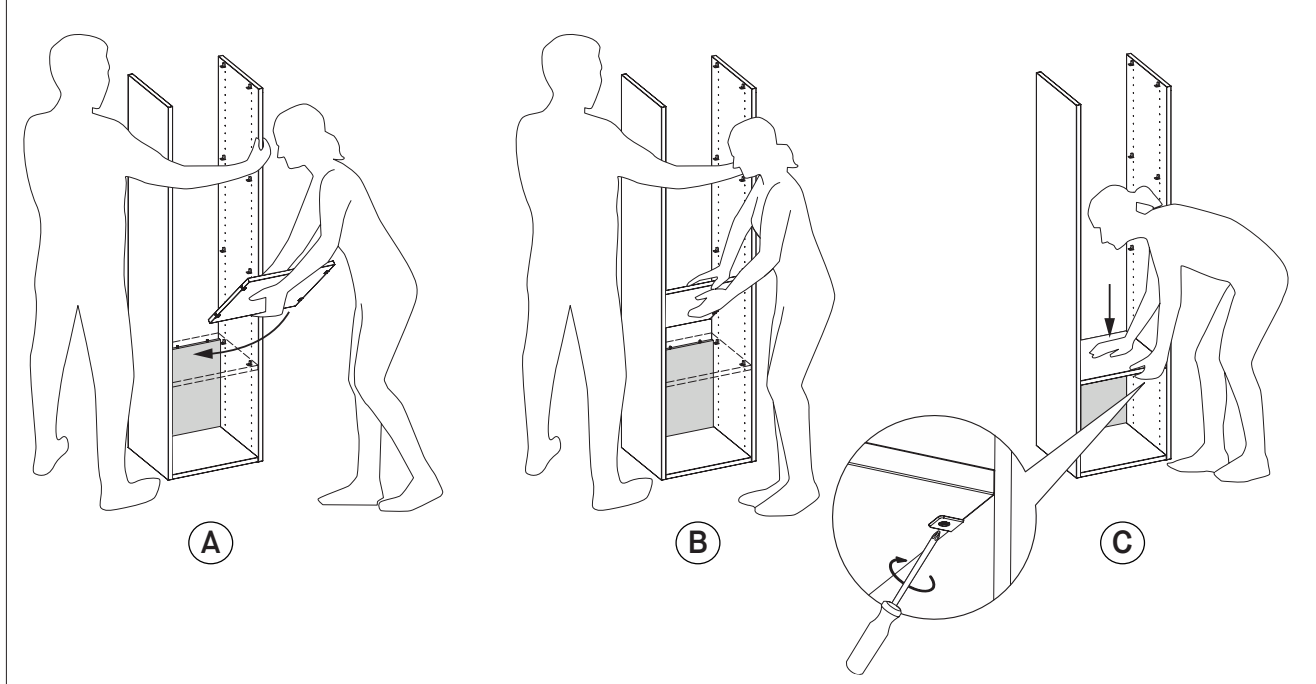
6



Once the bottom board is in place, you can add a backwall (P41). All our backwalls come with a plug-in connector and fit exactly into the pre-drilled holes of the boards.

**NOTE:** Once a backwall is installed, you won't be able to change the position of the board anymore.

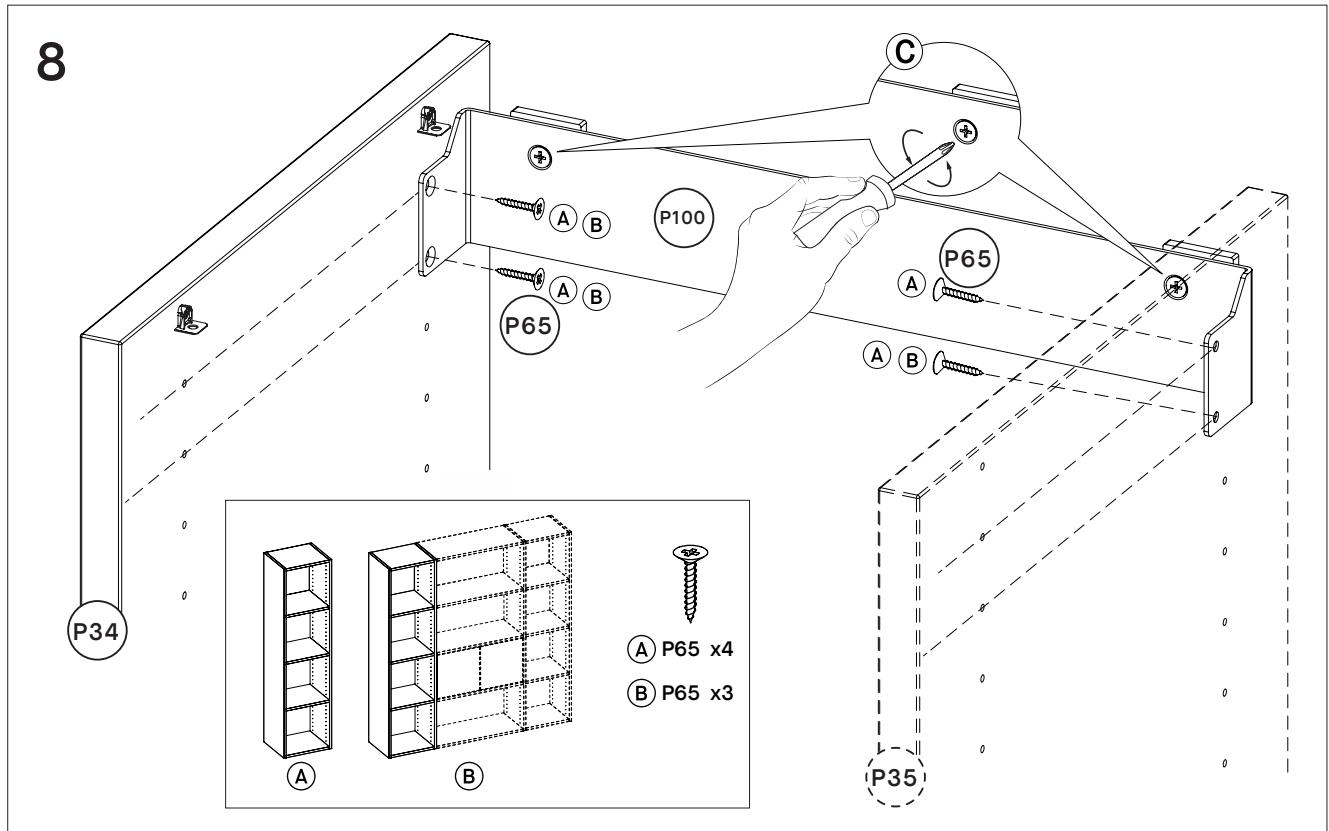
7



You only need two boards in the beginning: the bottom board and the next shelf (**P39** or **P45**). Be careful not to scratch the furniture panels while installing boards. We recommend to slide the board gently towards the back of the configuration close to the metal supports (A, B), then just pressing it down (C).

Once the boards are installed, secure the fittings as shown on the drawing above.

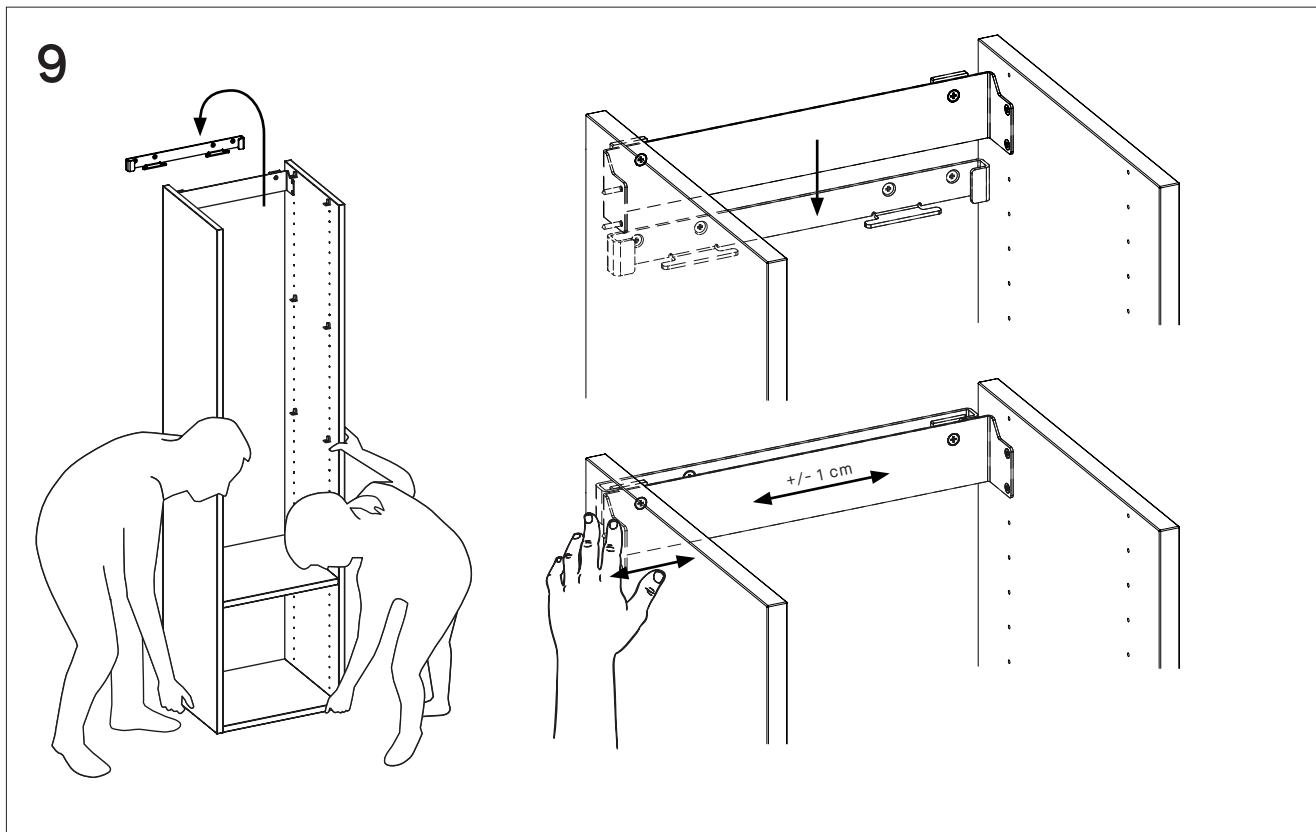
**NOTE:** Do not add the top board yet. This will be added later on.



In this step you need to fix the hanger **P100** to the sidewalls. Position the hanger in the upper part of your product, leaving one hole visible - this is where you'll fix the top board later on.

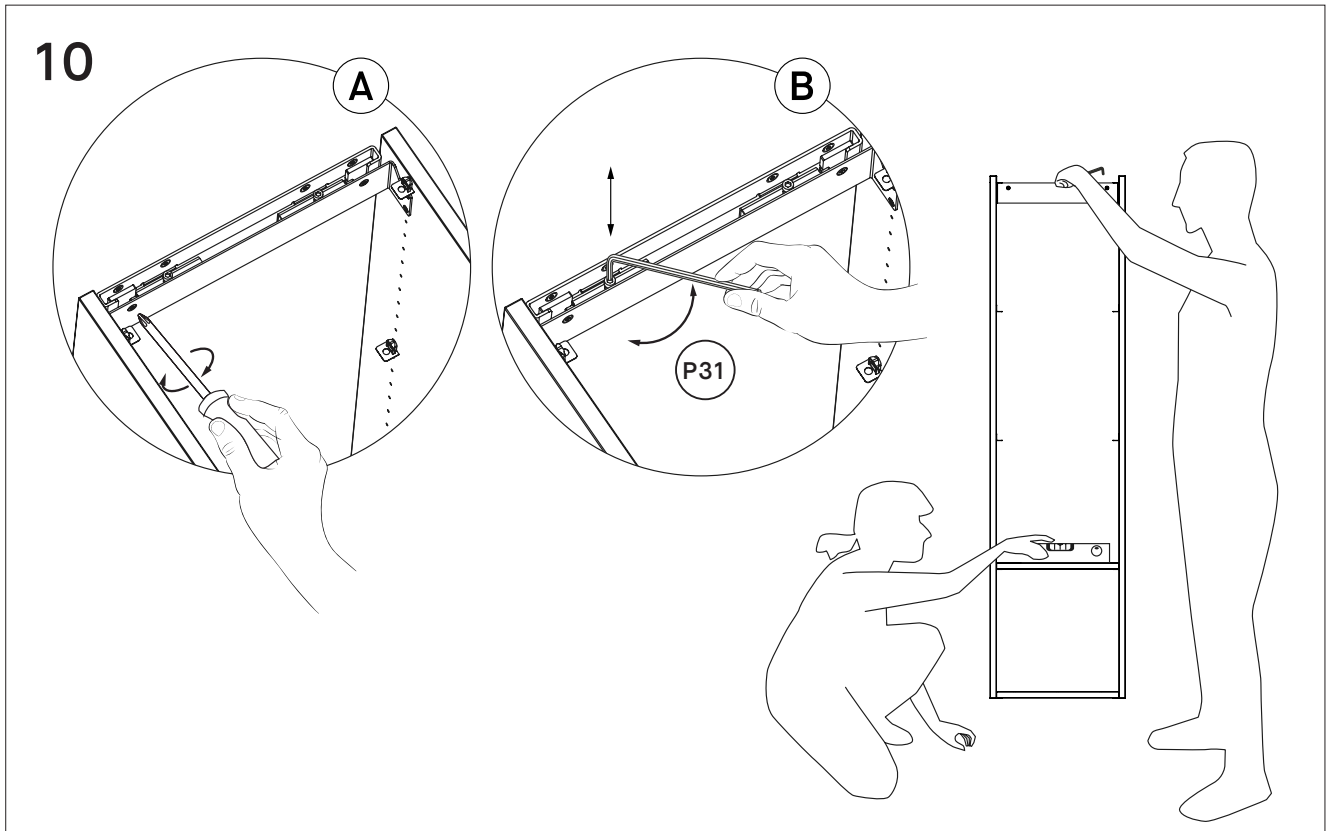
- A)** if your design is composed of only two sidewalls, use 4 screws **P65** in 4 holes of the hanger
- B)** if there are more than two sidewalls, use two **P65** screws on the left hand side and only one on the right hand side of the hanger, in the lower hole.

Loosen the screws in the back of the hanger **P100**, as seen on image **C**.



Now it's time to hang your design on the house wall. With the help of another person, lift the shelf carefully, holding it by the sidewalls. Hang it gently on the hanger fixed to the wall. Both parts of the hanger should clamp.

You can move the shelf to the left or to the right simply by pushing it carefully. The range of adjustment is around 1 cm.

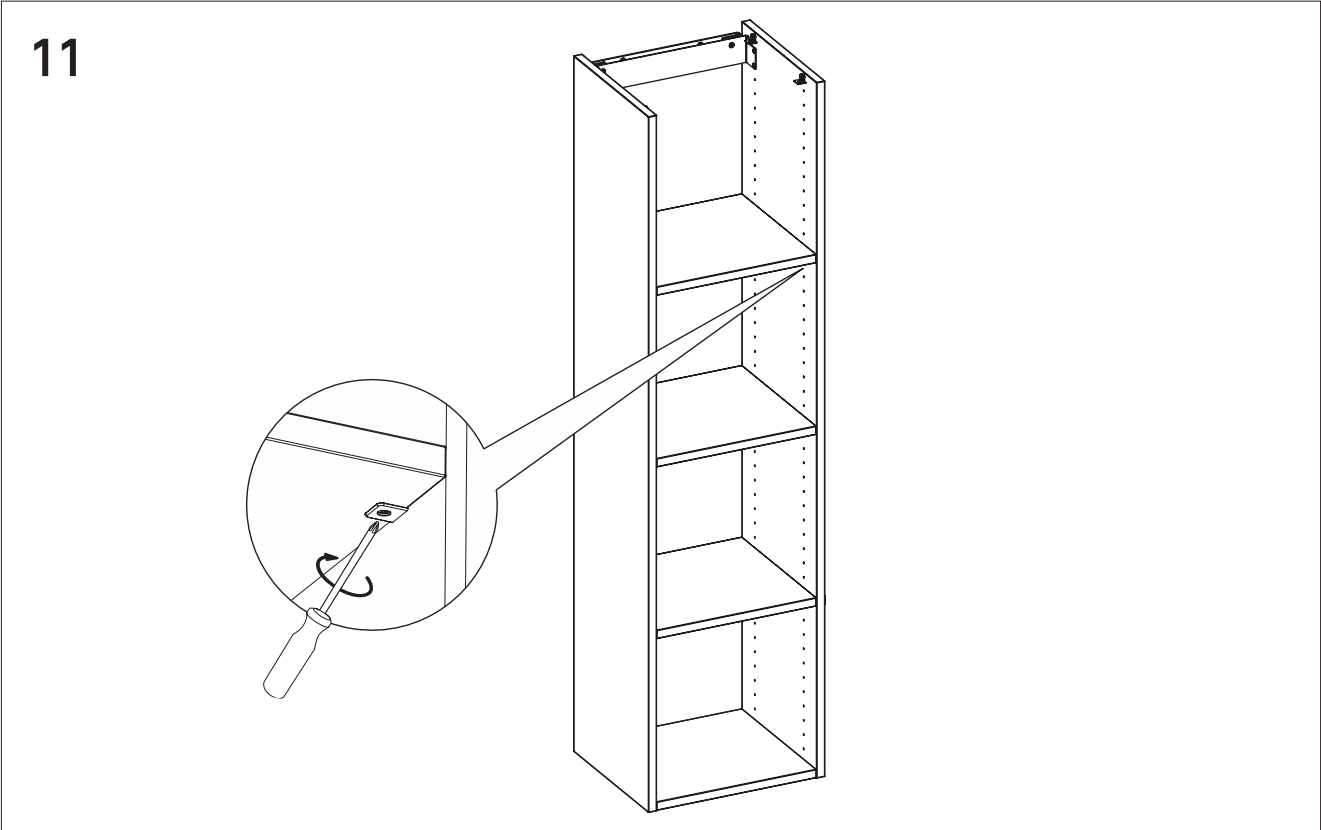


A) Tighten the screws in the back of the hanger **P100** to lock it as close to the house wall as possible - the gap between the back edge of the sidewall and the house wall should disappear.

B) Check the levelling of the shelf and adjust it with the help of two screws hidden behind the hanger: tightening the left or right screw lifts the left or right side of the shelf respectively.

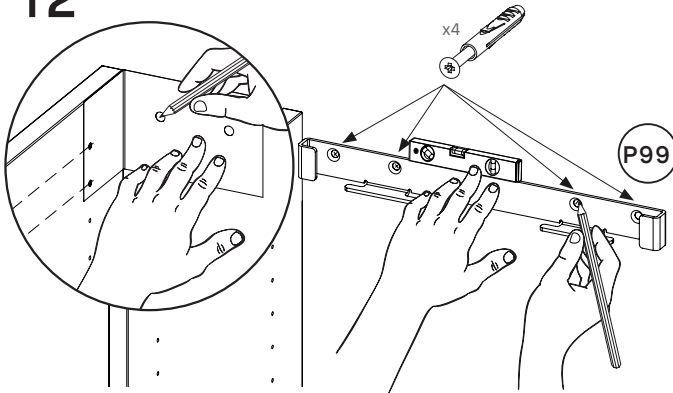
**NOTE:** It is very important not to skip the adjustments and to do them for each newly hung column, one by one - do not wait to adjust all of the columns at the very end of the assembly process.





Add all other boards and backwalls as described in steps 5-7, except for the top board, and secure them.

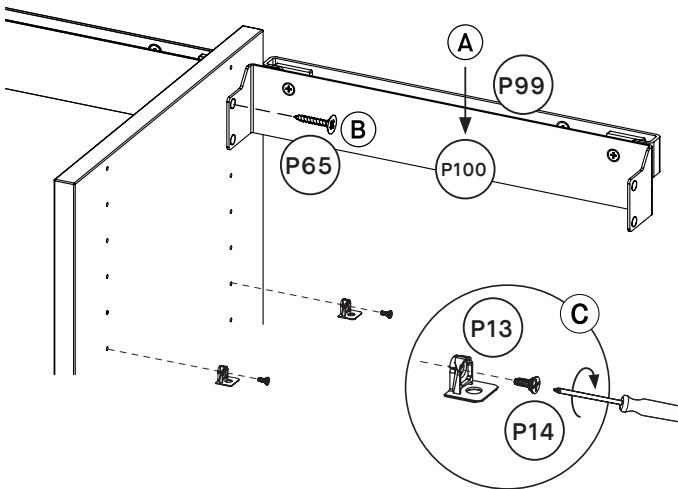
12



If your configuration has more than one column, please repeat step 3a or 3b and prepare drillings for the next hanger, then screw the hanger **P99** to the house wall firmly.

Remember to level the hanger properly at this step!

13



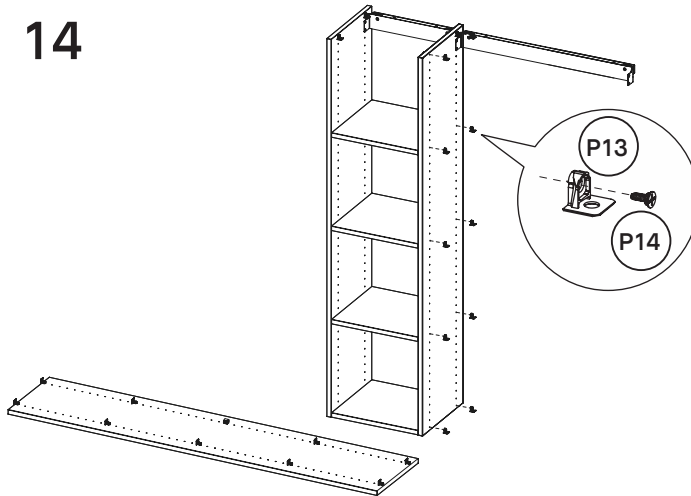
You'll be building other parts of the shelf that are already hanging.

A) Clamp the hanger **P100** on the **P99** fixed on the wall.

B) Screw the hanger **P100** to the left side of the furniture wall already installed. Place the screw in the upper hole of the hanger on the left hand side.

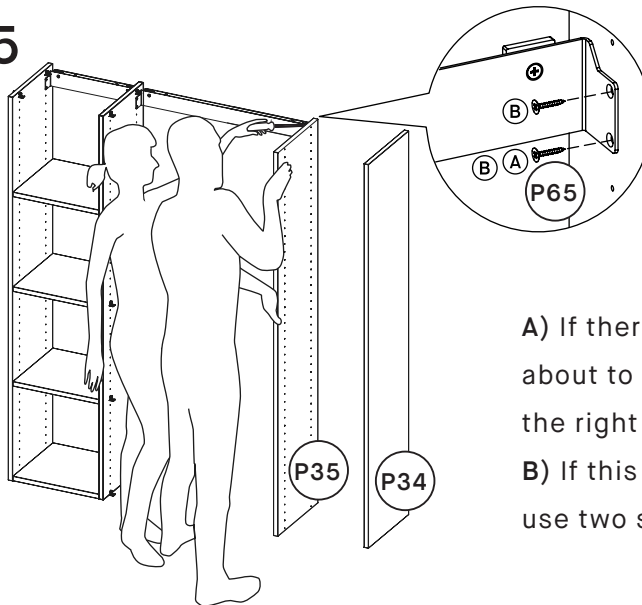
C) Install metal shelf supports **P13**, like you did in step 4, to the panel already hanging.

14



Repeat adding the metal shelf supports **P13** to the side of a column already hanging and to the next panel to be installed. Check the vertical measurements carefully if the second column is a different height than the first one.

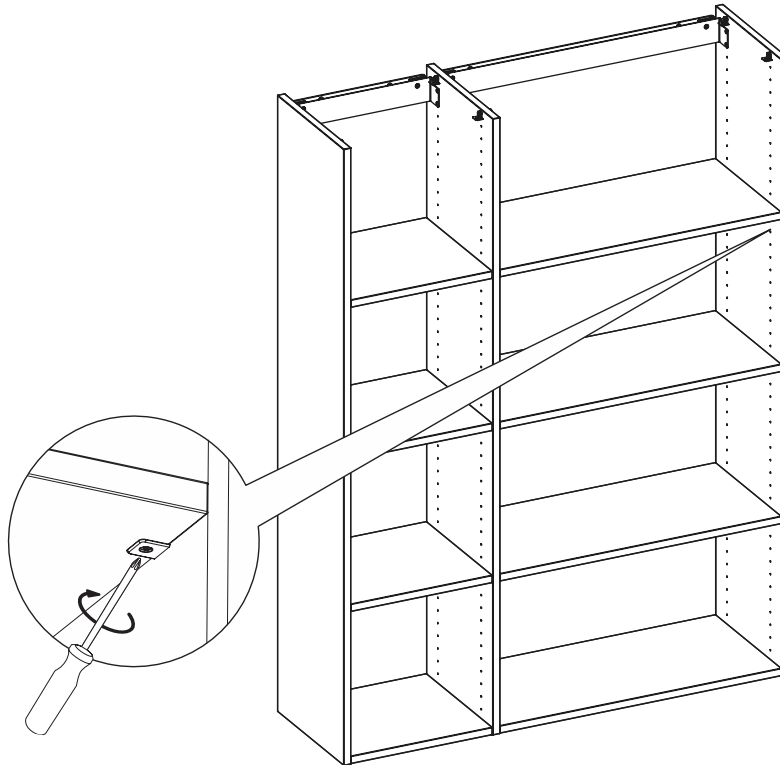
15



Place the next panel against the wall. You need two people for this operation: one person holds the panel against the wall, another person screws the panel into the hanger **P100**:

- A)** If there will be any next column and you are about to hang **P35** panel, use only one screw on the right side of the hanger, in the lower hole.
- B)** If this is the last column, ended by **P34** panel, use two screws in both holes of the hanger.

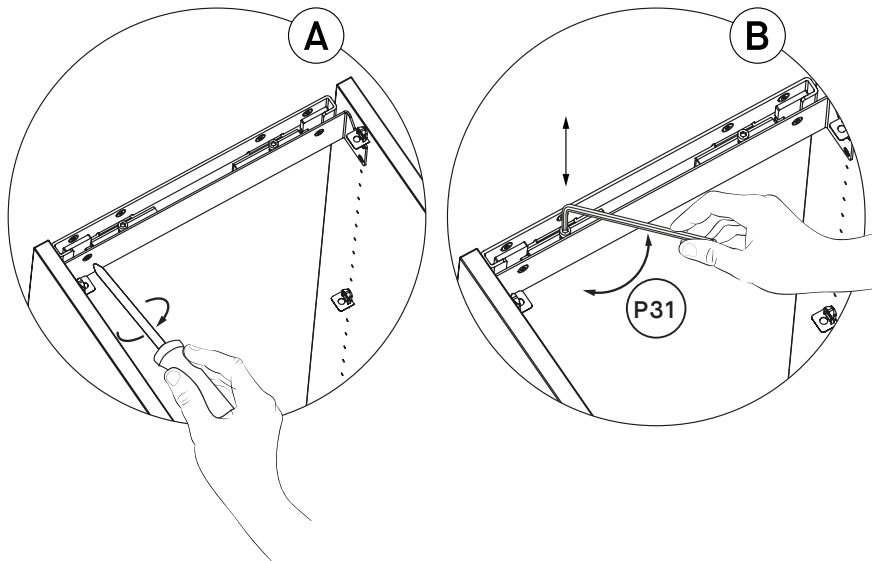
16



Then repeat steps 5 -7. You need two people for this operation: one person holds and stabilizes the wall just hung while another installs the boards and backwalls carefully.

**NOTE:** Do not add the top board yet. This will be added later on.

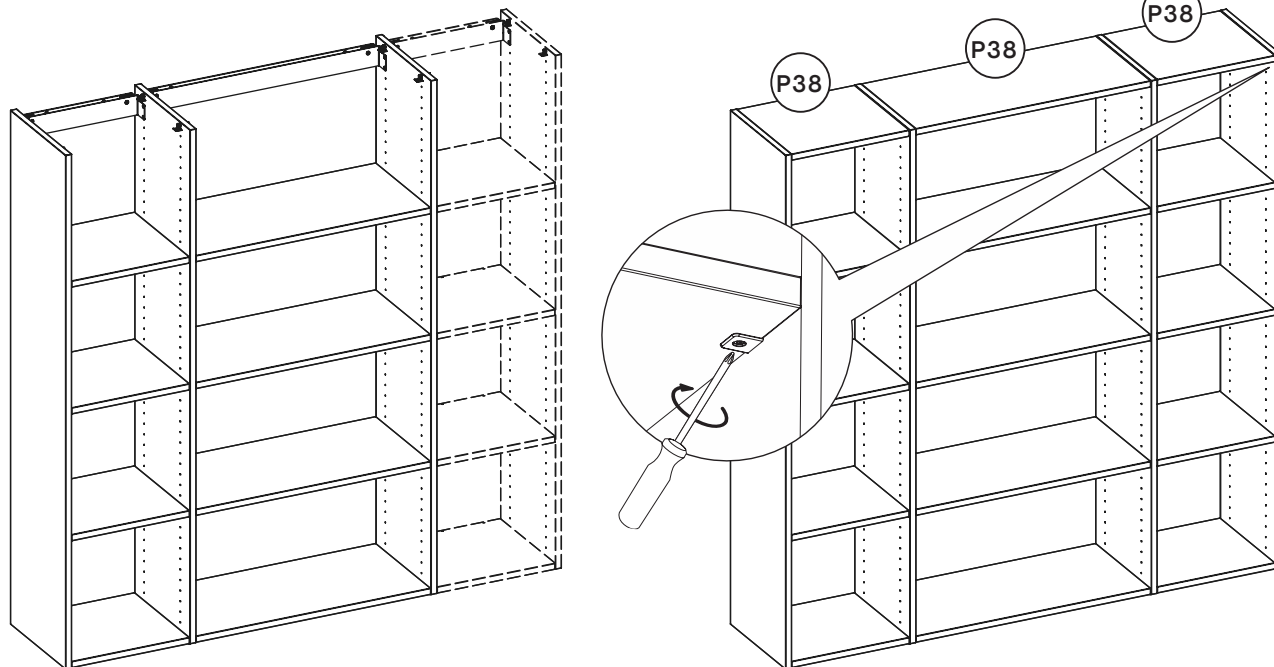
17



Repeat the necessary adjustments:

- A) Tighten the screws in the back of the hanger **P100** to lock it as close to the house wall as possible - the gap between the back edge of the sidewall and the house wall should disappear.
- B) Check the levelling of the shelf and adjust it with the help of two screws hidden behind the hanger: tightening the left or right screw lifts the left or right side of the shelf, respectively.

18



Repeat steps 12-17 if your configuration has any more columns.

Once all the columns are built, add the top boards **P38** and secure them.

**NOTE:** The maximum weight authorised on the properly assembled shelf is 100 kgs per one column. Do not exceed this load!

