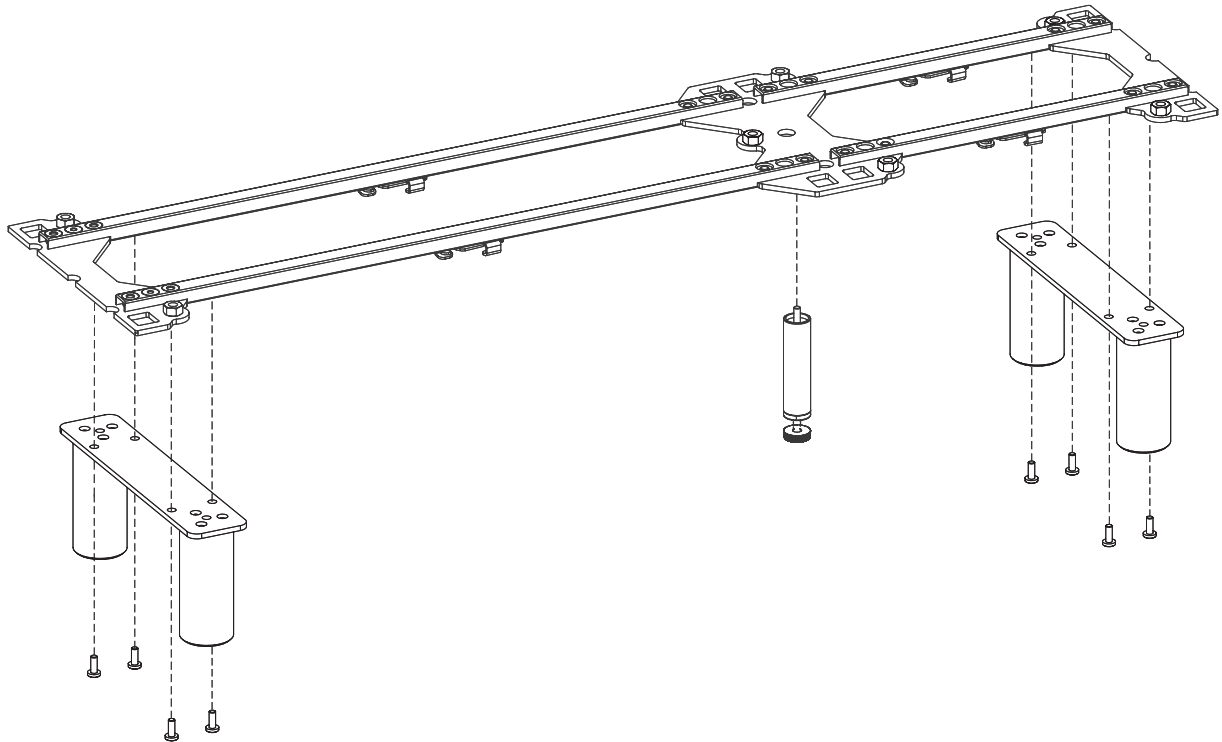


CYRCLE LEGS

FOR GRYD



You will build something similar to this.

Here are the parts you will need.

P1

x1
or more depending
on your configuration

Leg Platform Plate (Double-sided)
101.173.00

P2

x2
for each end of
the platform

Leg Platform Plate (Single-sided)
101.173.01

P3

x1
or more depending
on your configuration

Platform Profile (37cm)
101.174.00

P4

x1
or more depending
on your configuration

Platform Profile (73cm)
101.174.01

P23

CYRCLE Legs
101.166.xx / 101.478.xx

P6

Support Leg
101.167.xx

P9

ø20

Round felt pad
902.100.18

P10

Screw pad
902.100.13

P11

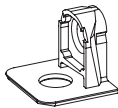
Screw distancer
902.100.15

P12

3,5 x 25
Truss screw 3,5 x 25mm
902.100.12

901.100.99

P13



Metal shelf support
901.100.04

P14



3 x 10

Screw 3 x 10mm
901.100.05

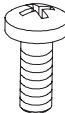
P7



8 x 14

Flat head screw 8 x 14mm
902.100.21

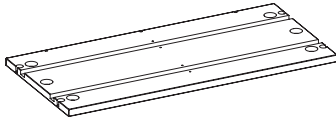
P8



6 x 16

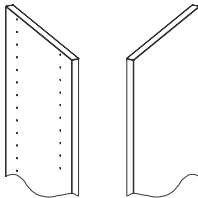
Pan head screw 6 x 16mm
902.100.16

P25



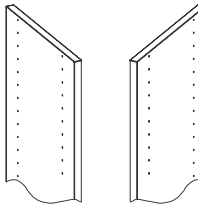
Bottom Board
101.171-172.xx/ 101.441-442.xx

P34

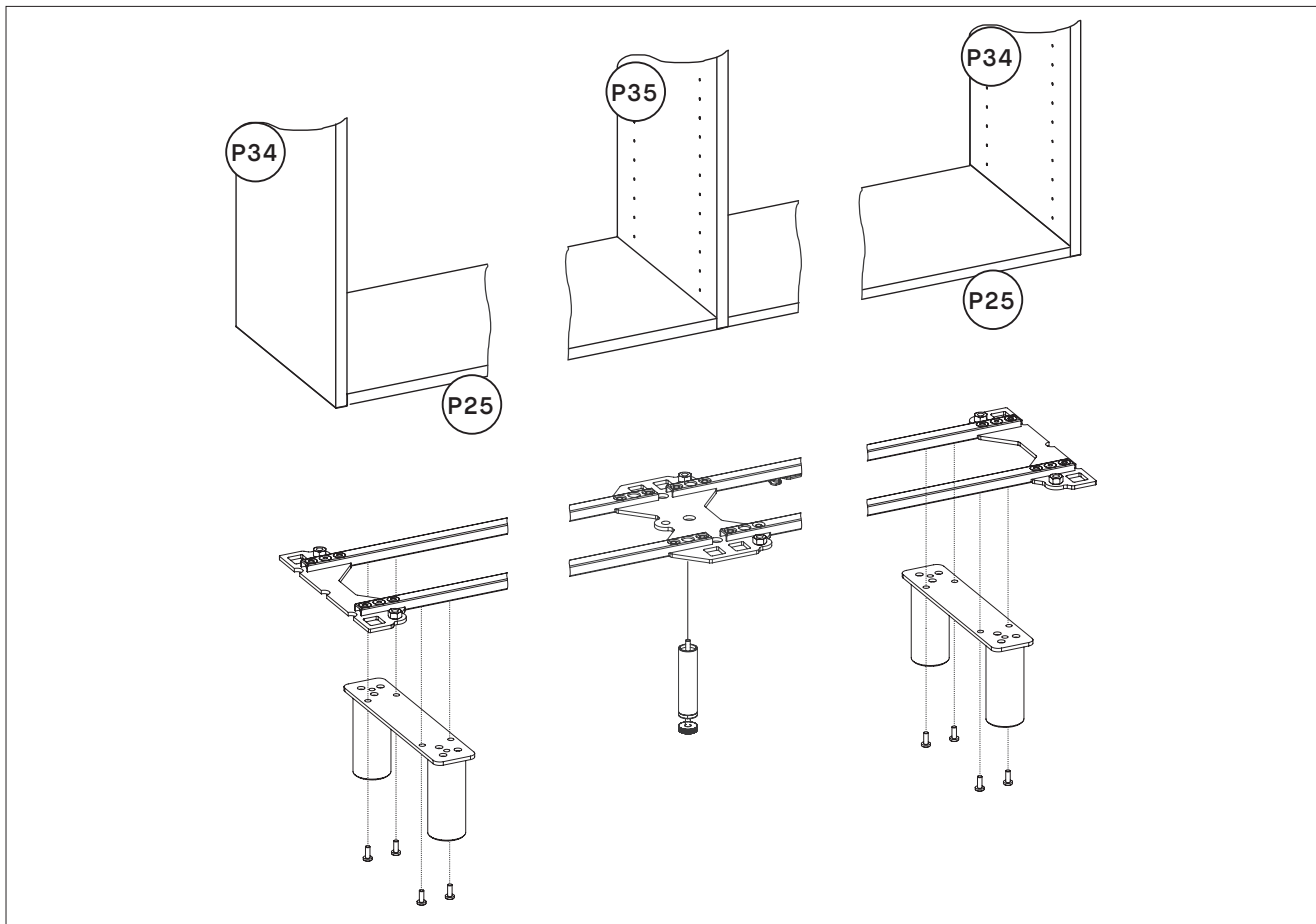


Outer Sidewalls
101.100-105.xx/ 101.400-406.xx

P35

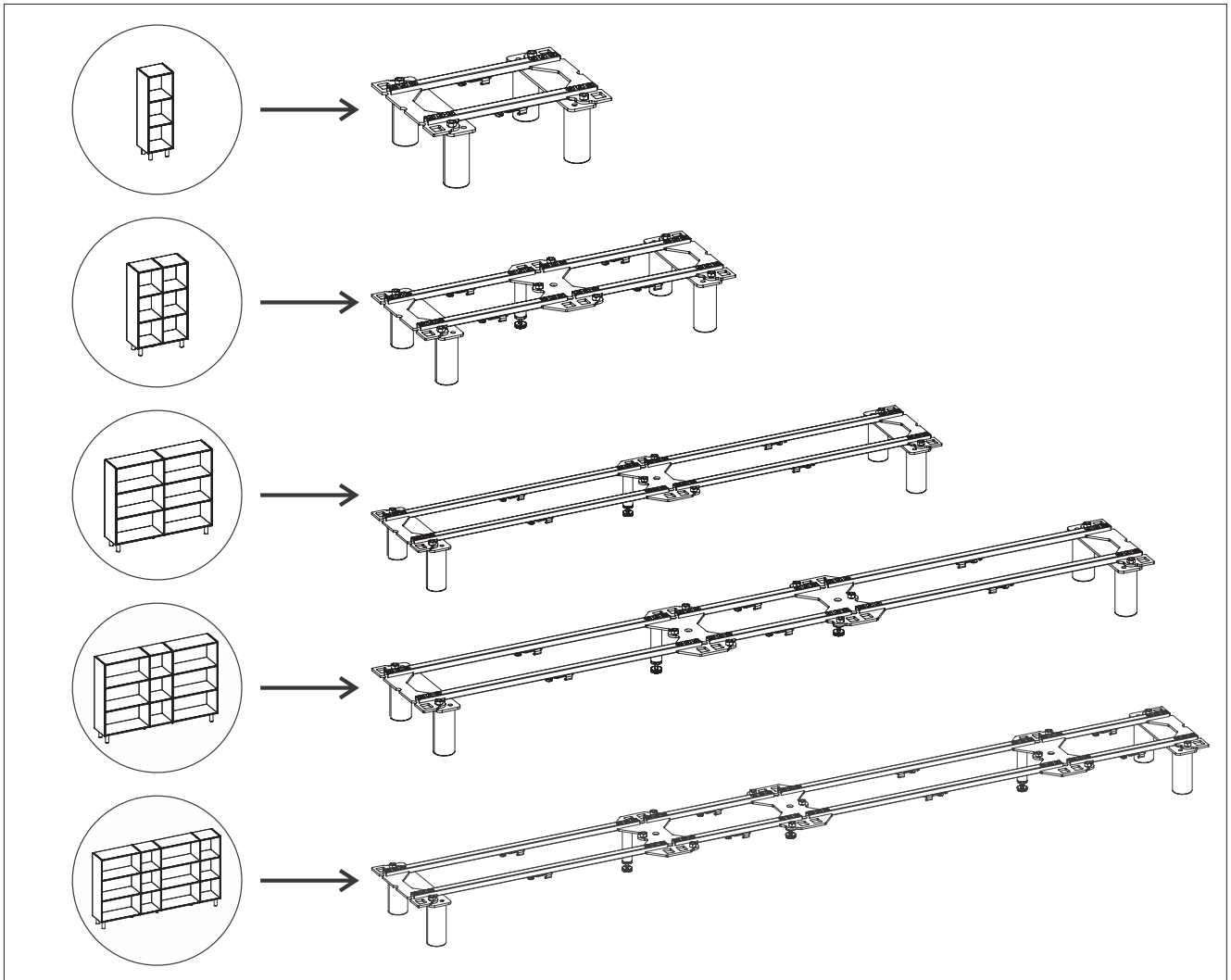


Inner Sidewalls
101.106-111.xx/ 101.407-413.xx

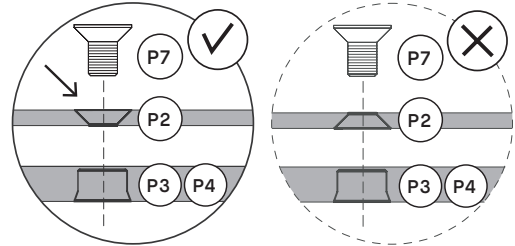
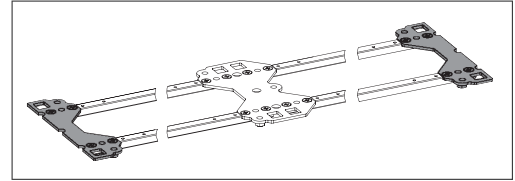
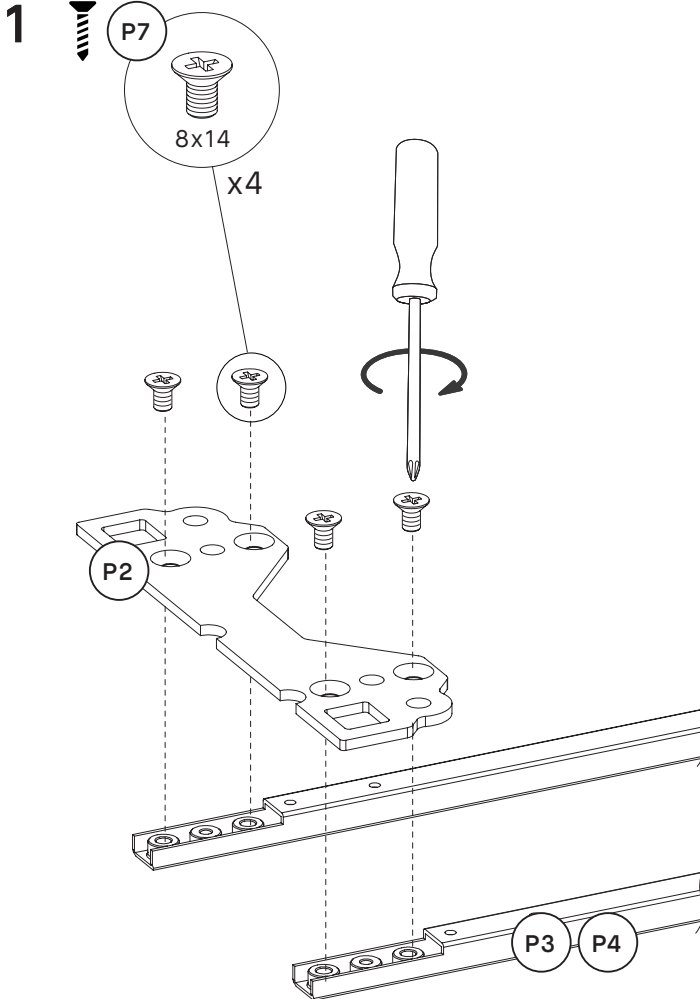


Overall: the single platforms belong below the outer sidewalls and connect with the CYRCLE leg. The double platform(s) belong below the inner sidewall(s) and connect with the support leg that is needed for stability reasons.

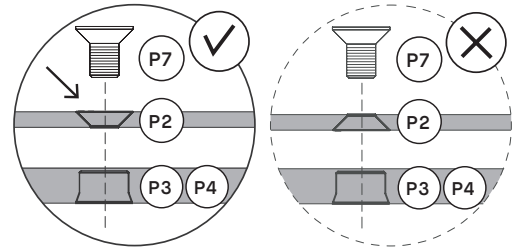
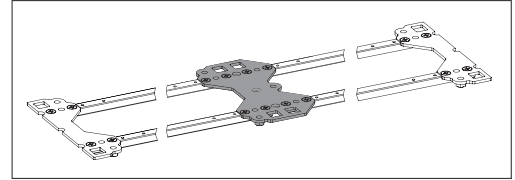
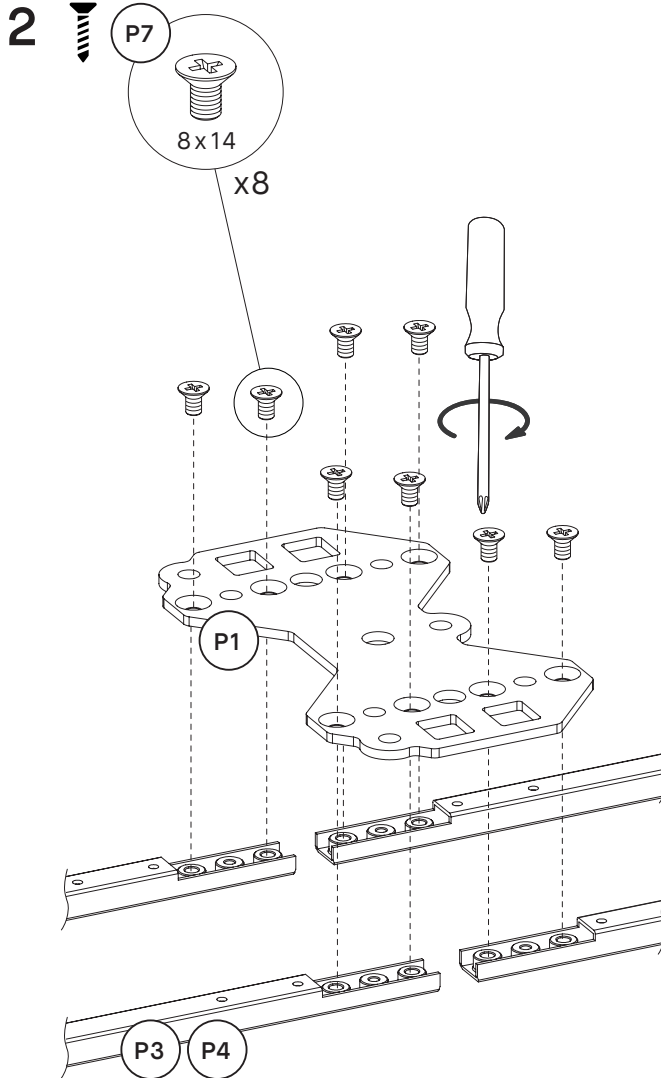
NOTE: you need to add one support leg per inner sidewall. If you assemble one or more inner sidewalls without a support leg, stability can't be guaranteed.



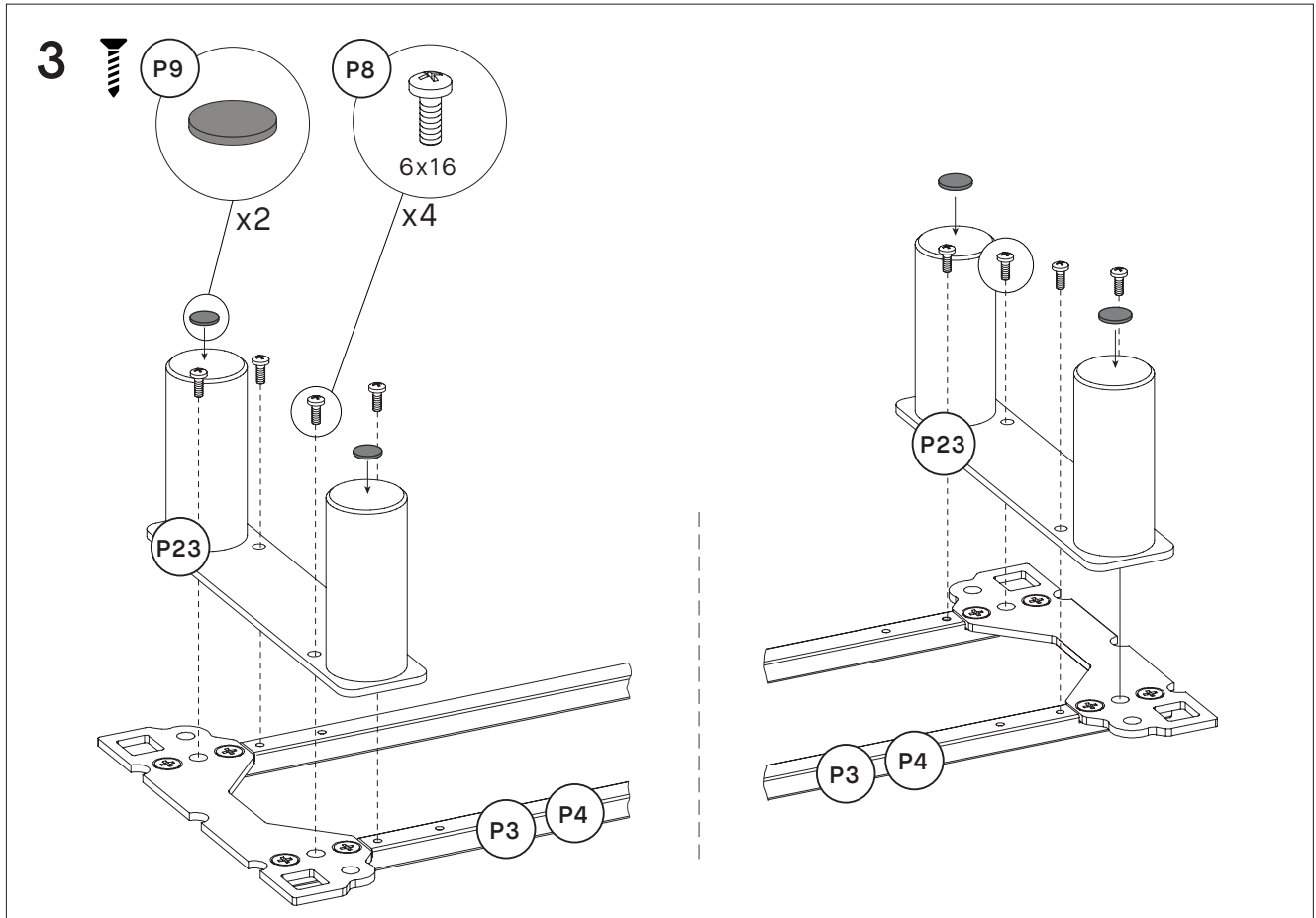
Have a look at the example constructions on the left and how the leg construction for these examples look like on the right. Find the one construction that matches your design the best and assemble the leg construction accordingly.



Prepare installation of CYRCLE leg below outer sidewall: connect single end platform **P2** and two profiles of **P3** or **P4** (depending on configuration) with the screw **P7**. Pay attention to illustration (above): make sure to connect the platform from the right side.



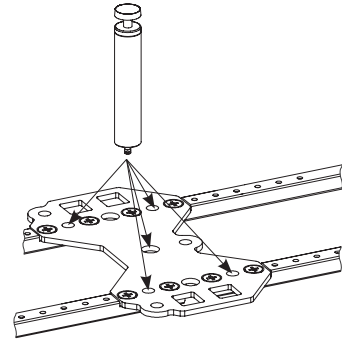
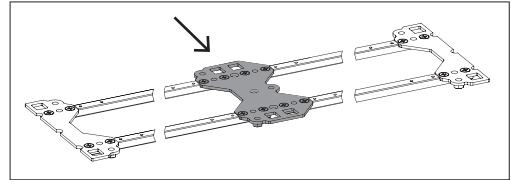
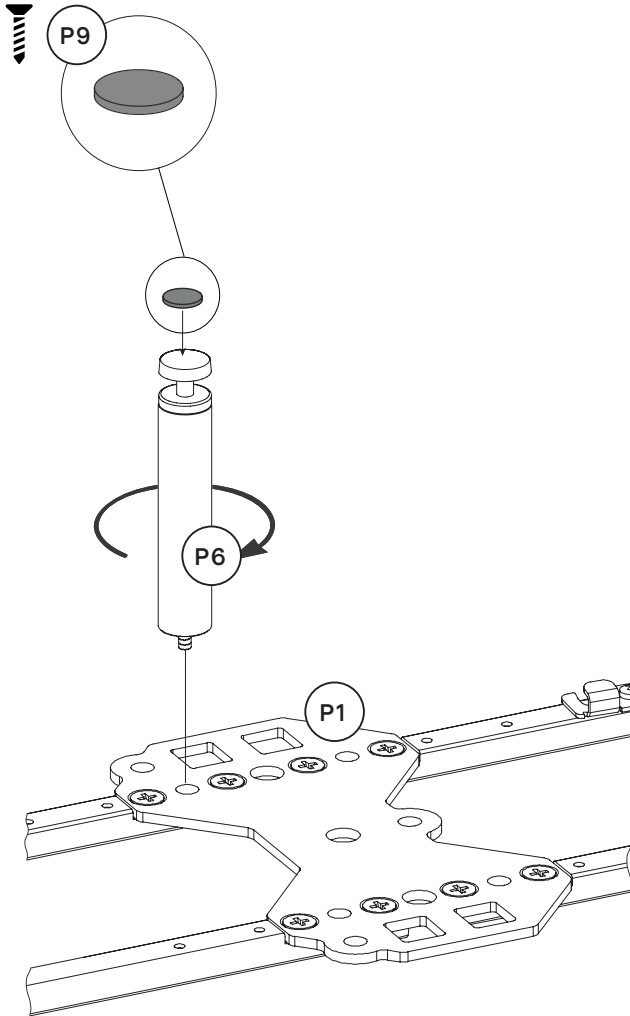
Prepare installation of support leg below inner sidewall: connect double platform **P1** and two profiles of **P3** or **P4** (depending on configuration) with the screw **P7**. Pay attention to illustration (above): make sure to connect the platform from the right side.



Connect CYRCLE leg **P23** with the profiles **P3/P4** by using screw **P8** (6x16mm).
To protect your floor surface from scratches, stick the paddings **P9** to CYRCLE (**P23**) and support leg **P6**.

NOTE: Repeat step for all CYRCLE legs (based on your configuration).

4

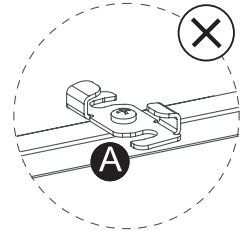
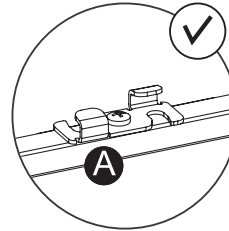
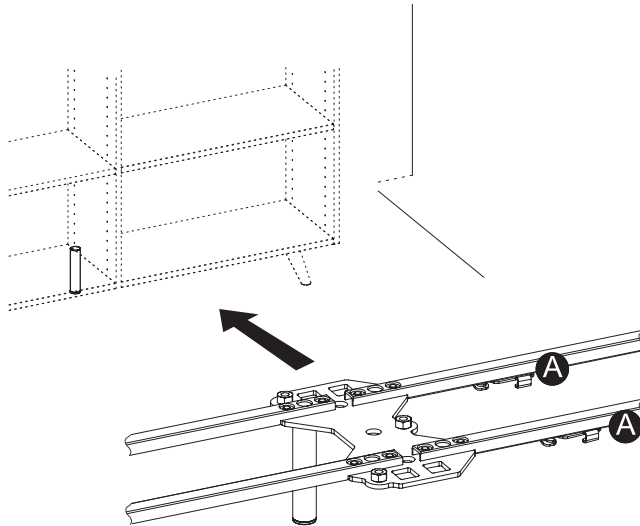


Screw support leg **P6** into the platform **P1**. As you can see on the right, you have several options.

NOTE: Ideally the support leg is installed at the back of the actual product. However depending on the requirements (stability, floor level) it can be situated in the front or in the middle.

NOTE: Repeat step for all support legs (total number depends on the number of inner sidewalls of your configuration).

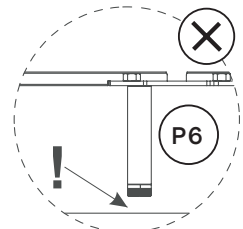
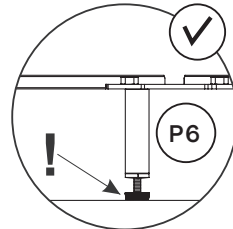
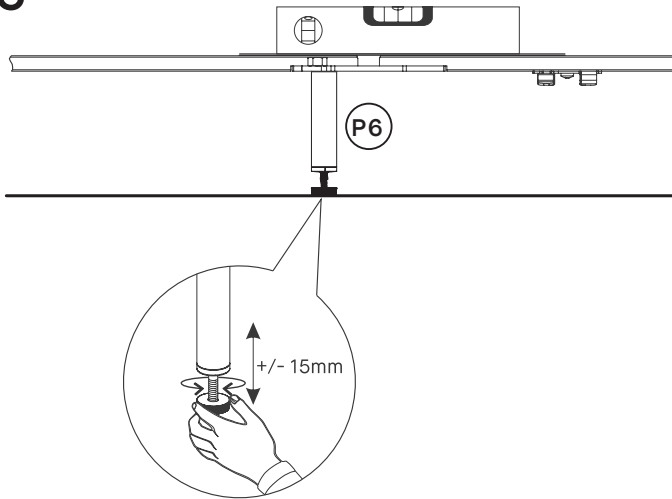
5



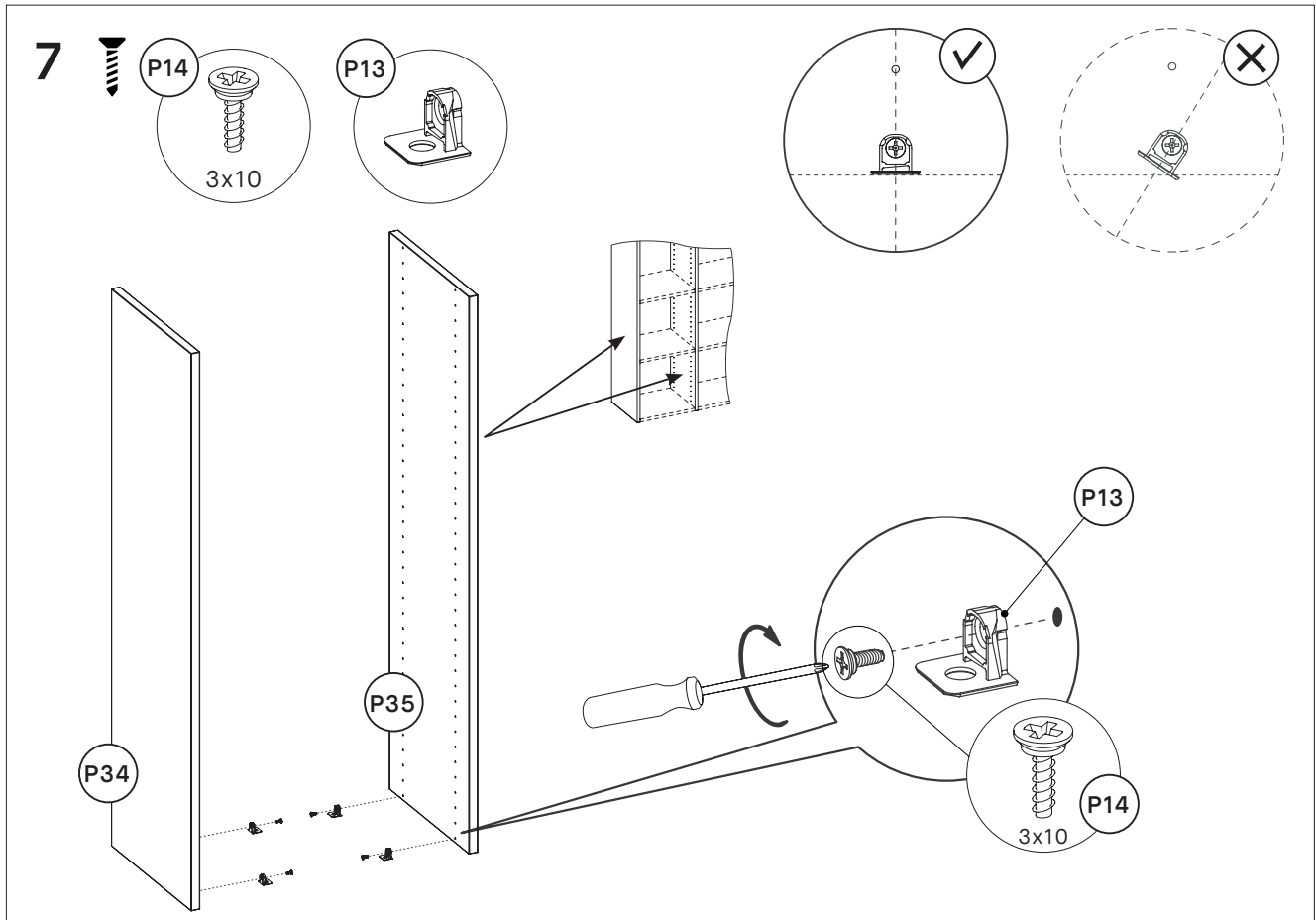
Place the leg construction at the target location of your furniture.

NOTE: Pay attention to the position of the hinge (as illustrated in A, above).

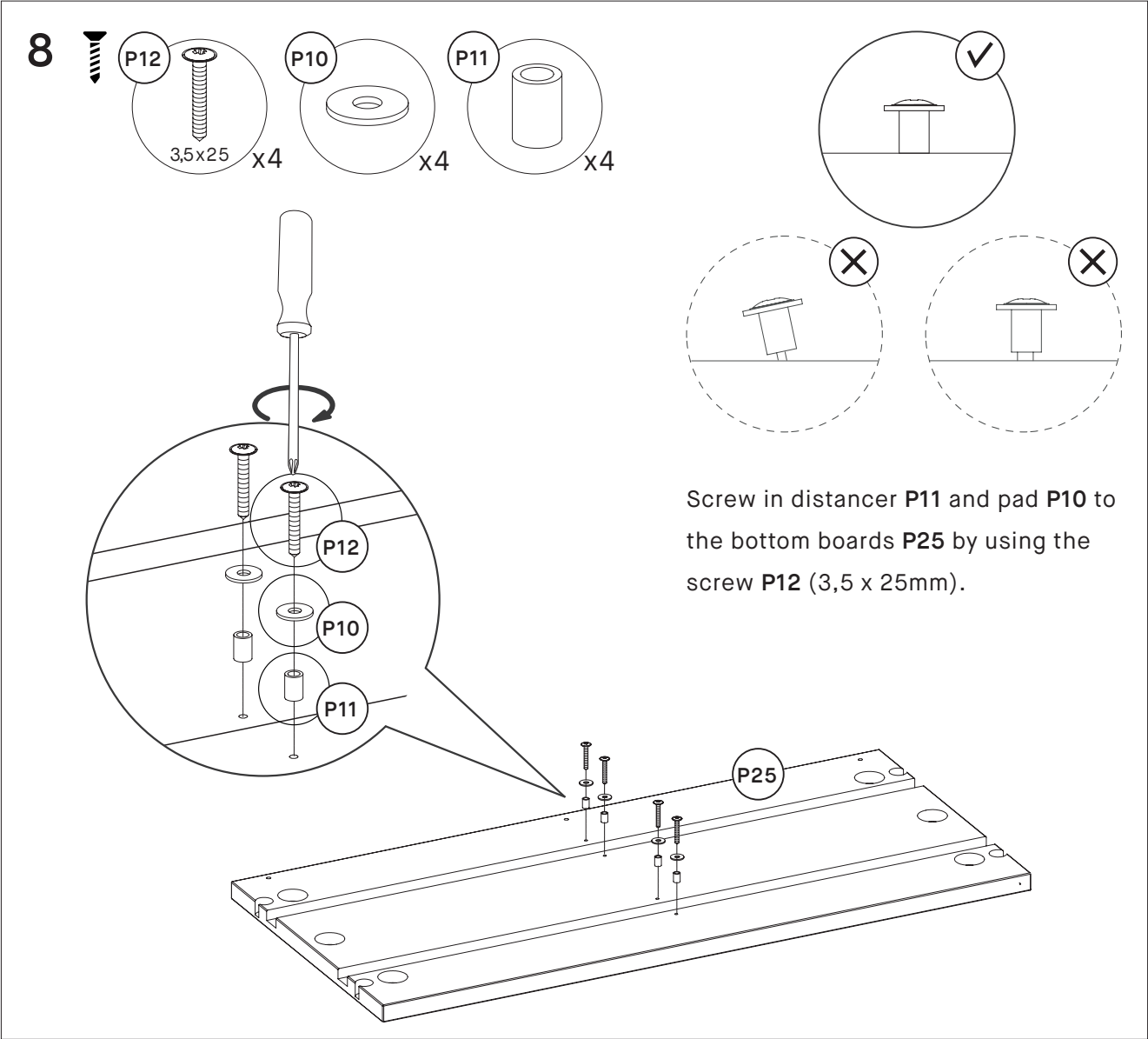
6

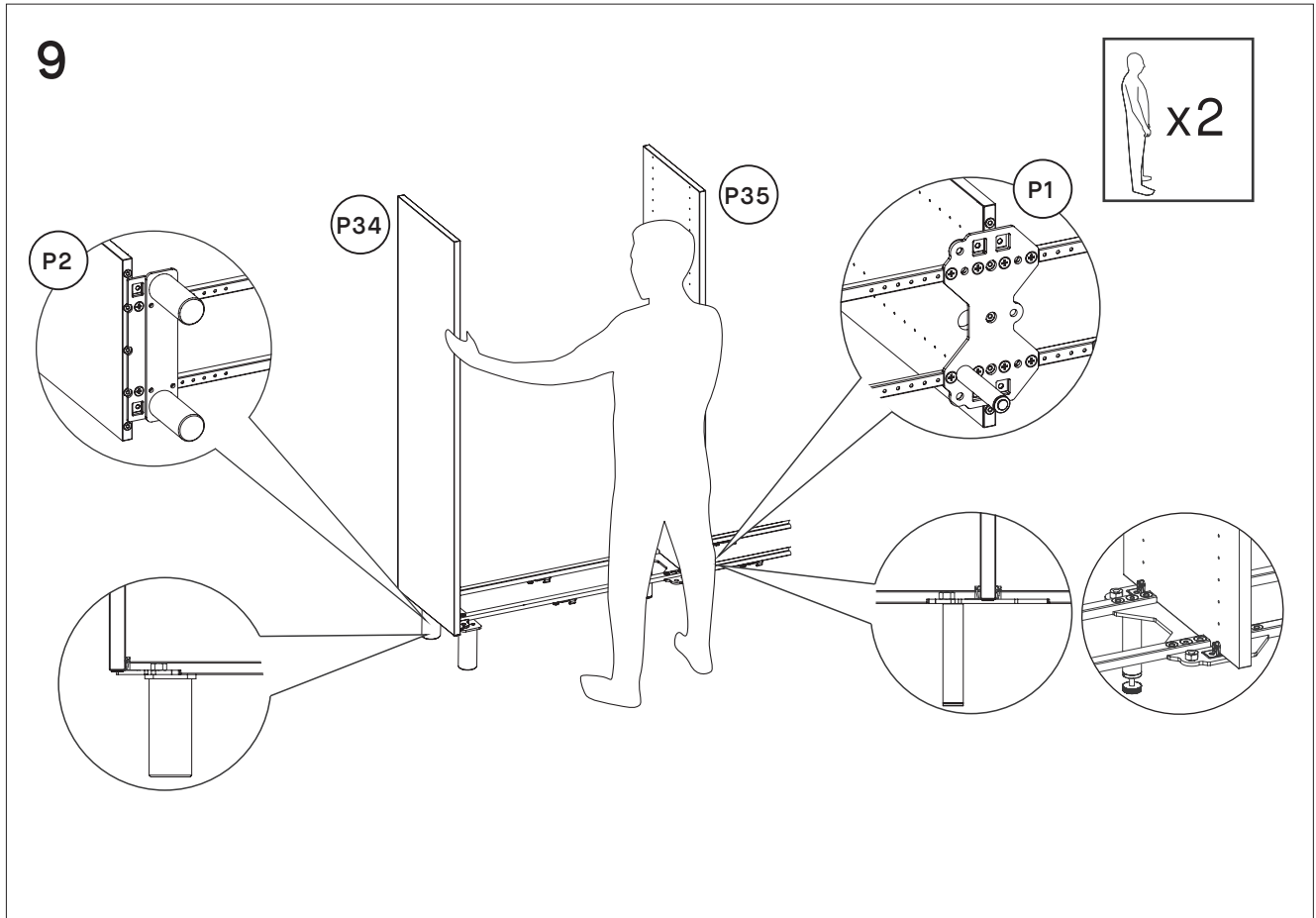


Level the construction horizontally by adjusting the support leg(s) as shown above. **This step is particularly important as it prevents the construction from bending.**

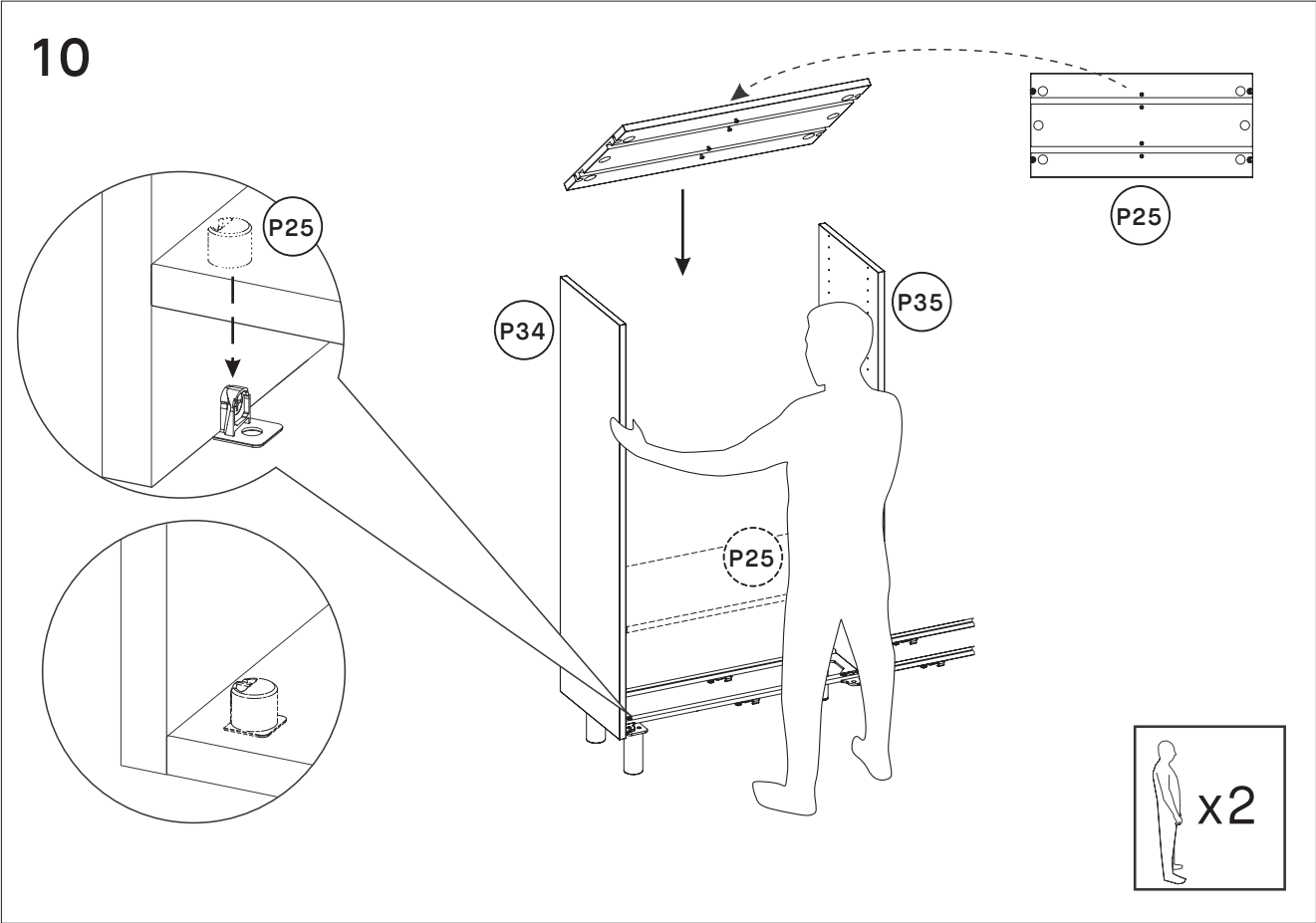


The metal shelf supports (**P13**) are there to hold the bottom boards. Screw the supports into all sidewalls as shown above (using screw **P14**). Please check your configuration to figure out where to screw in the support. You need to use them wherever you placed a board. Please refer to the “Don’t forget to measure” tip from the “Introduction” chapter on page 10 for details on how to position the metal shelf supports correctly.

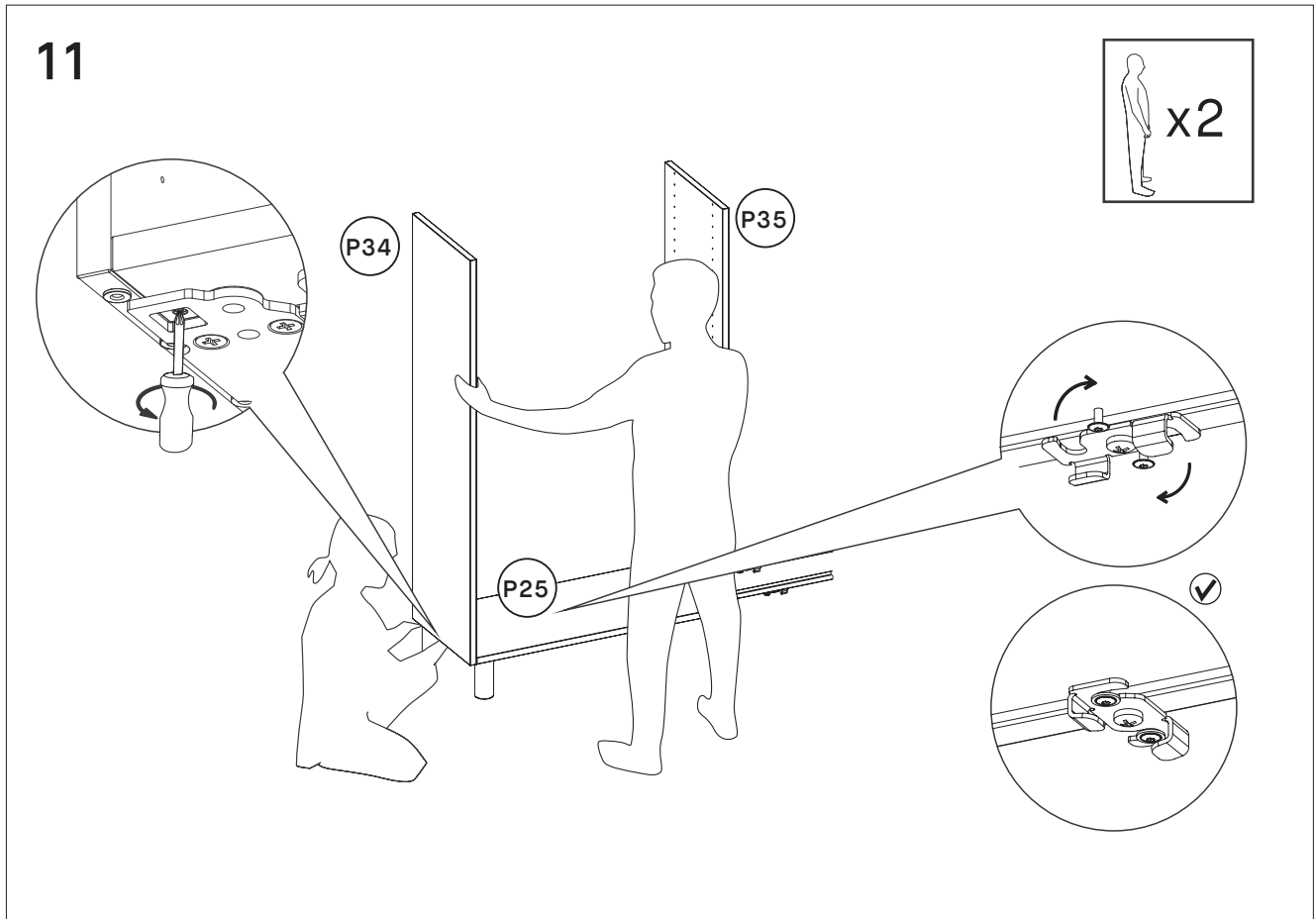




Now stick the first two sidewalls into their platform: the outer sidewalls go into the end of the single end platform **P2** and the inner sidewall in the middle of the double platform **P1**.

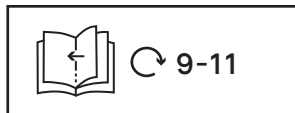


Place bottom boards **P25** on the platform by joining it to the sidewalls **P34/P35** with additional help.

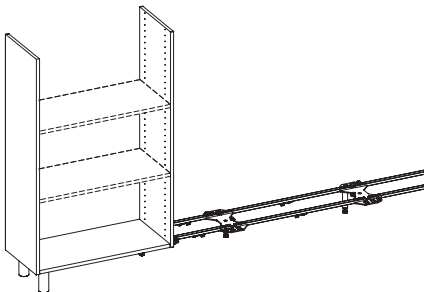


Screw in the sidewalls **P34/P35** to the bottom boards and turn the lock underneath the bottom board to connect the rails with the board. You should hear a 'click' sound once the lock is in its final position.

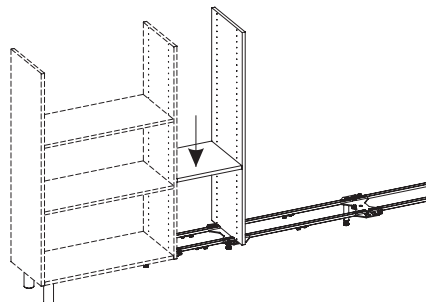
12



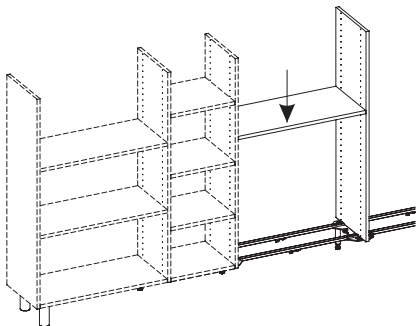
1



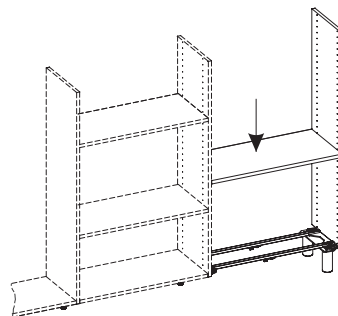
2



3



4



NOTE: Step 9 to 11 go together and have to be performed multiple times if your configuration requires it (depending on the number of sidewalls you have ordered). Please connect two sidewalls on the left side of your product with their platform (step 9), mount the bottom board in the middle of them (step 10) and finally lock the bottom platform with the rails (step 11). Repeat steps 9 to 11 by adding sidewalls one at a time, until you reach the outer sidewall on the right-hand side of your product.