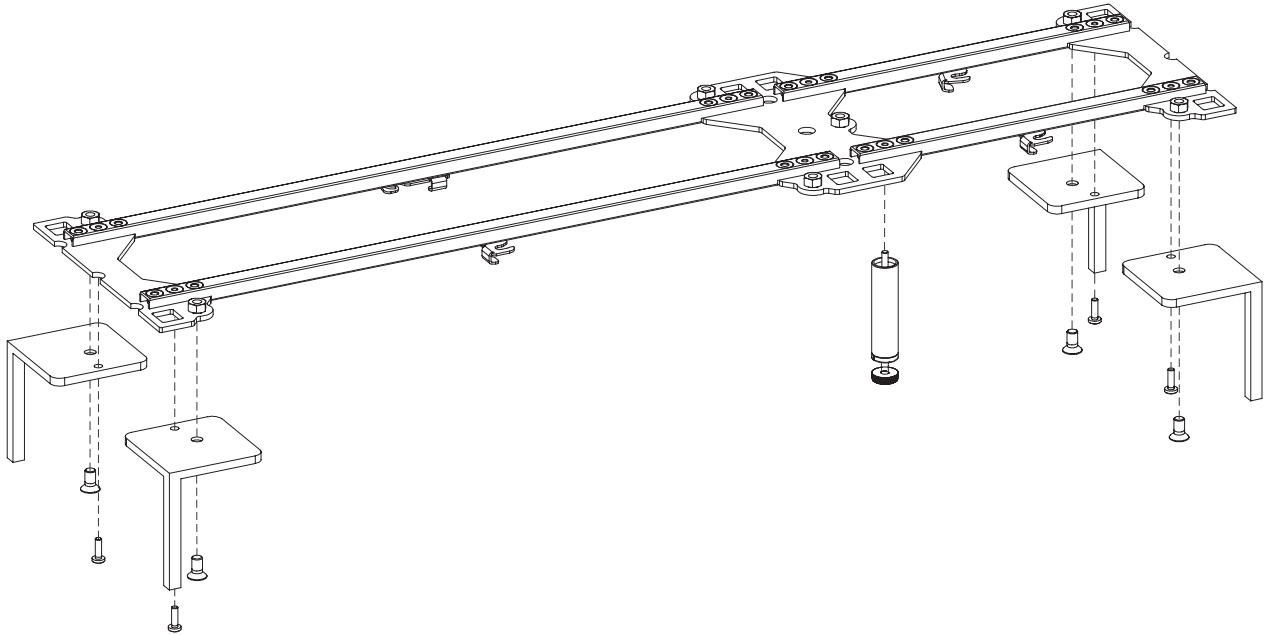


# LYNK LEGS

FOR GRYP

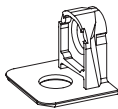


You will build something similar to this.

Here are the parts you will need.

<div><div>P1</div><div>x1 or more depending on your configuration</div><div></div><div>Leg Platform Plate (Double-sided) 101.173.00</div></div>	<div><div>P2</div><div>x2 for each end of the platform</div><div></div><div>Leg Platform Plate (Single-sided) 101.173.01</div></div>	<div><div>P3</div><div>x1 or more depending on your configuration</div><div></div><div>Platform Profile (37cm) 101.174.00</div></div>	<div><div>P4</div><div>x1 or more depending on your configuration</div><div></div><div>Platform Profile (73cm) 101.174.01</div></div>
<div><div>P97</div><div>x2</div><div></div><div>LYNK Leg left 101.181.xx, 101.482.xx</div></div>	<div><div>P98</div><div>x2</div><div></div><div>LYNK Leg right 101.181.xx, 101.482.xx</div></div>	<div><div>P102</div><div></div><div>6 x 20 Pan head screw 6 x 20mm 901.101.54</div></div>	<div><div>P101</div><div></div><div>10 x 20 Screw 10 x 20mm 901.101.55</div></div>
<div><div>P10</div><div></div><div>Screw pad 902.100.13</div></div>	<div><div>P11</div><div></div><div>Screw distancer 902.100.15</div></div>	<div><div>P12</div><div></div><div>3,5 x 25 Truss screw 3,5 x 25mm 902.100.12</div></div>	
901.100.99			

P13



Metal shelf support  
901.100.04

P14



3 x 10

Screw 3 x 10mm  
901.100.05

P7



8 x 14

Flat head screw 8 x 14mm  
902.100.21

P6



Support Leg  
101.167.xx

P9



ø20

Round felt pad ø20  
902.100.18

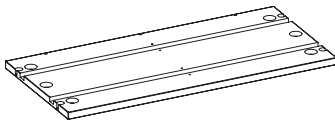
P105



ø10

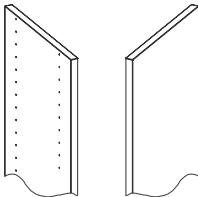
Round felt pad ø10  
901.551.09

P25



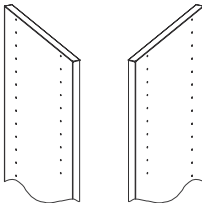
Bottom Board  
101.171-172.xx, 101.441-442.xx

P34

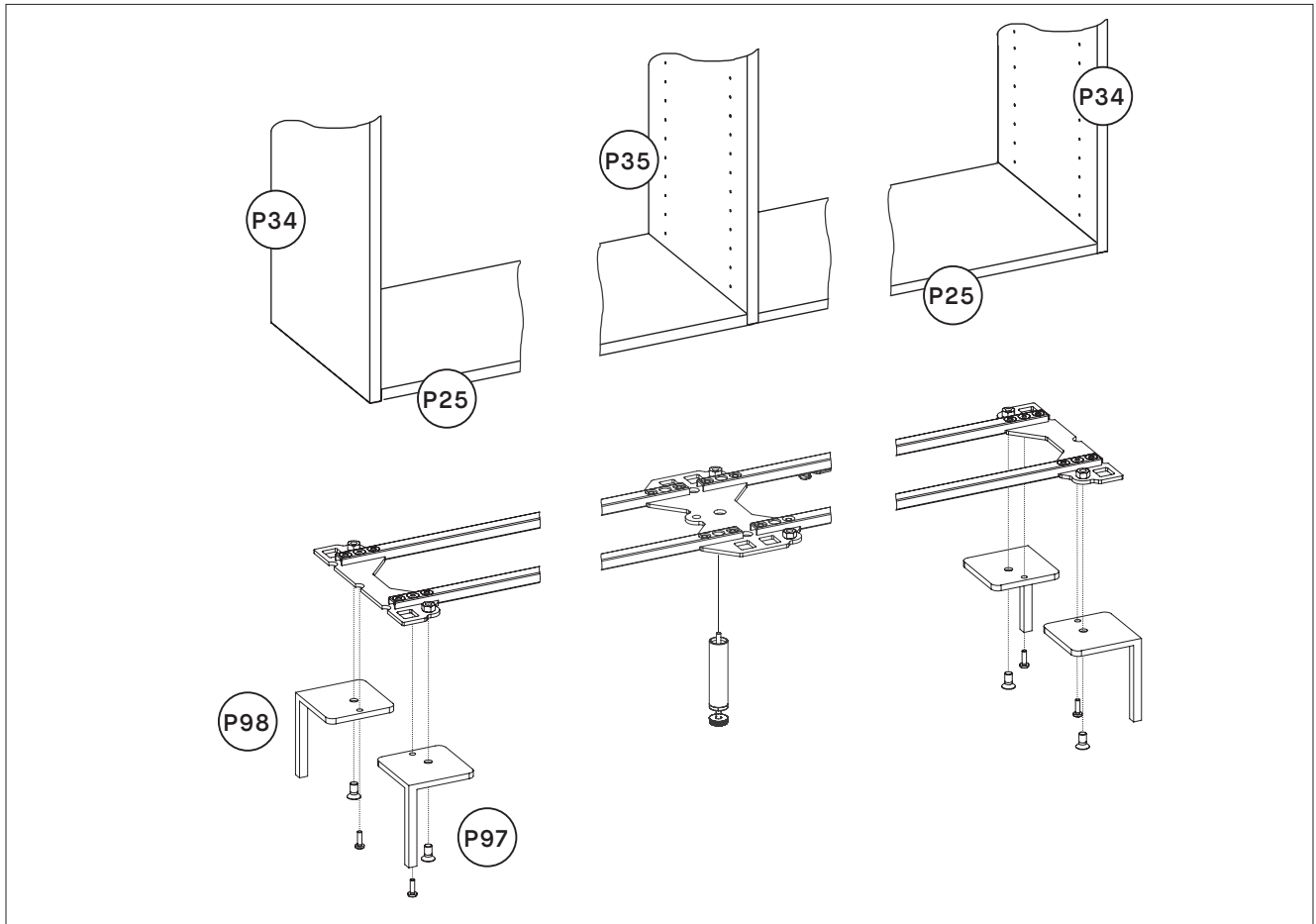


Outer Sidewalls  
101.100-105.xx, 101.400-406.xx

P35

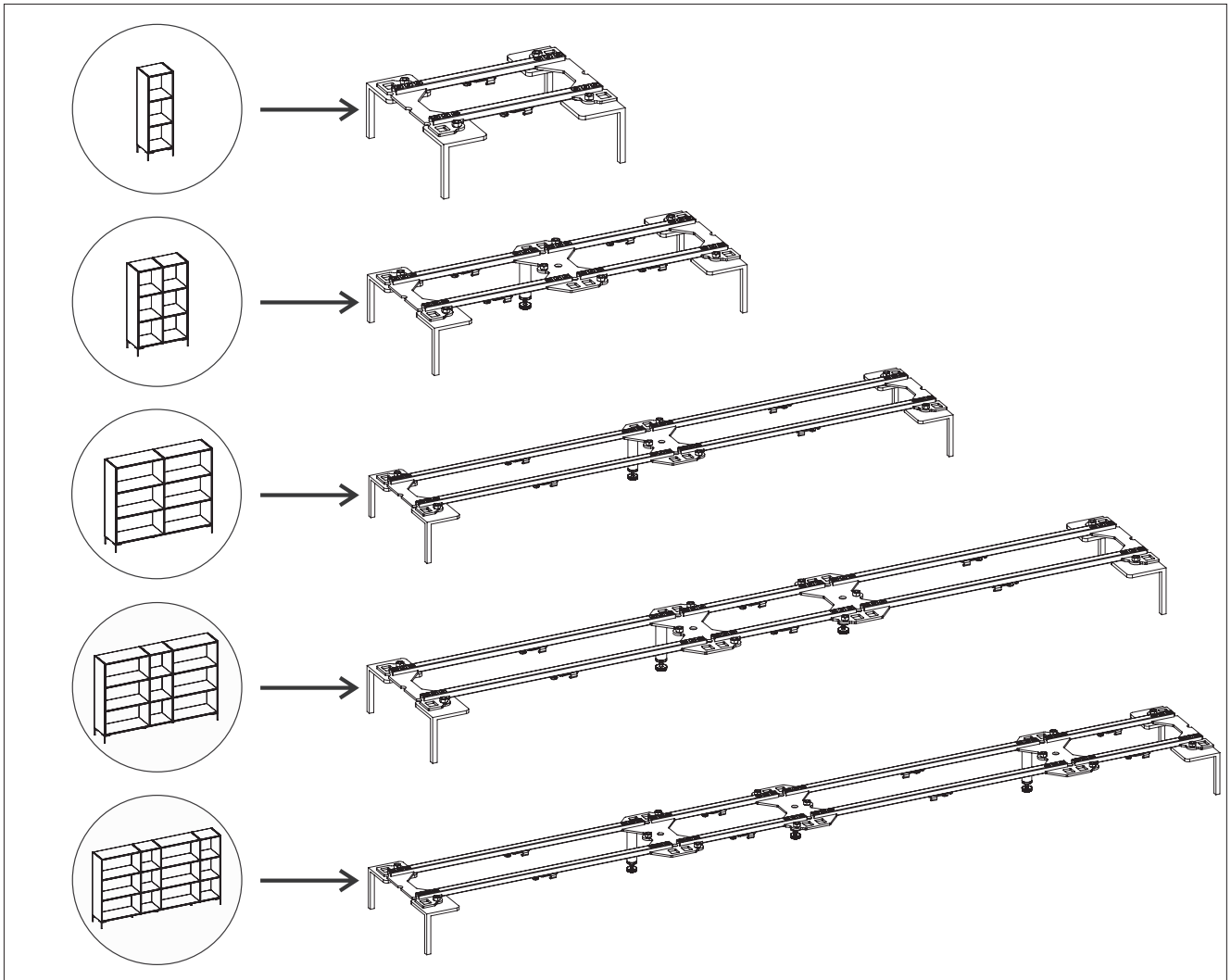


Inner Sidewalls  
101.106-111.xx, 101.407-413.xx

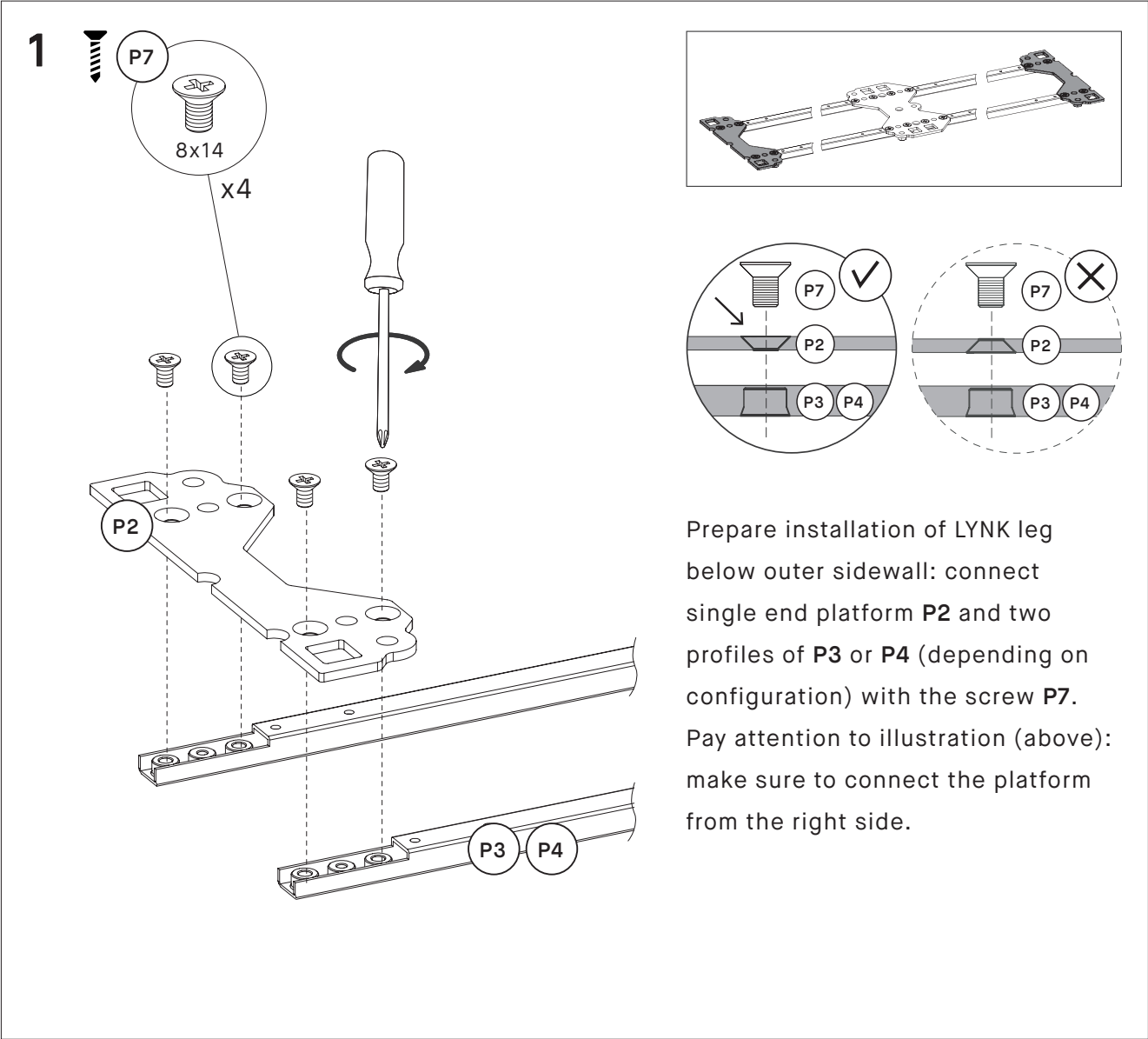


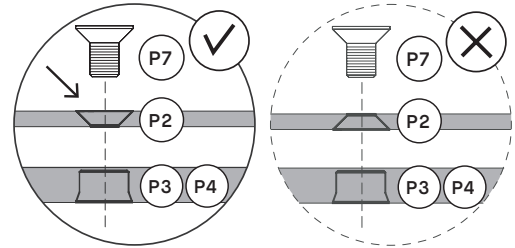
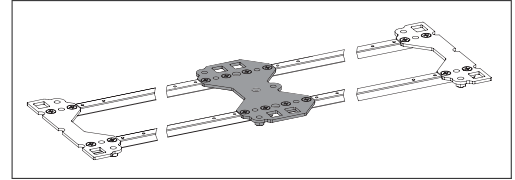
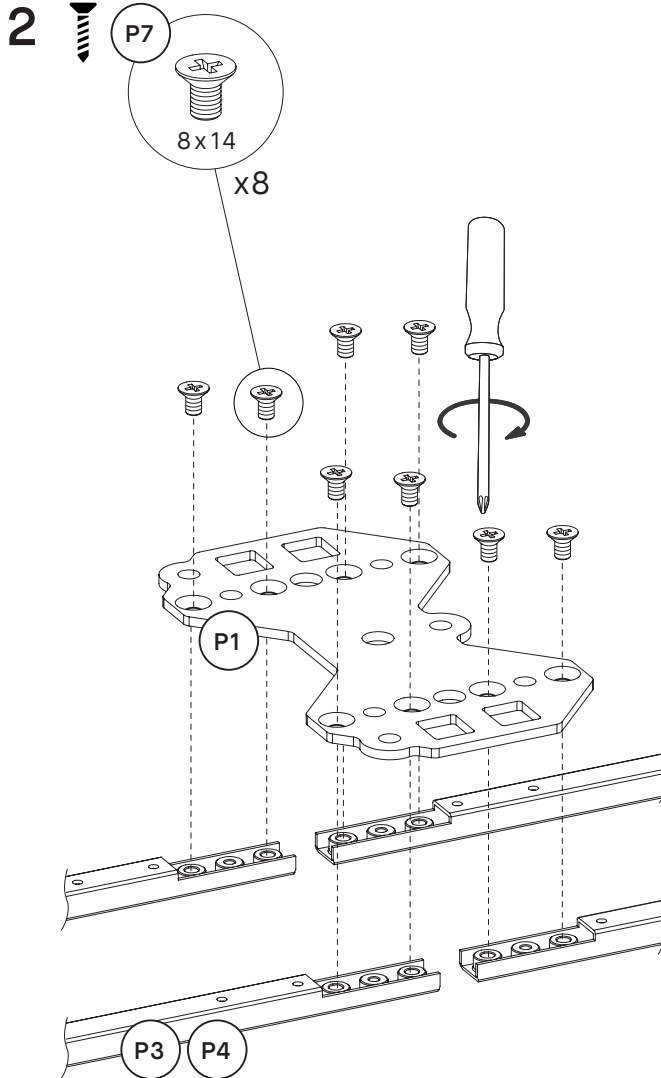
Overall: the single platforms belong below the outer sidewalls and connect with the LYNK leg. The double platform(s) belong below the inner sidewall(s) and connect with the support leg that is needed for stability reasons.

**NOTE:** you need to add one support leg per inner sidewall. If you assemble one or more inner sidewalls without a support leg, stability can't be guaranteed.

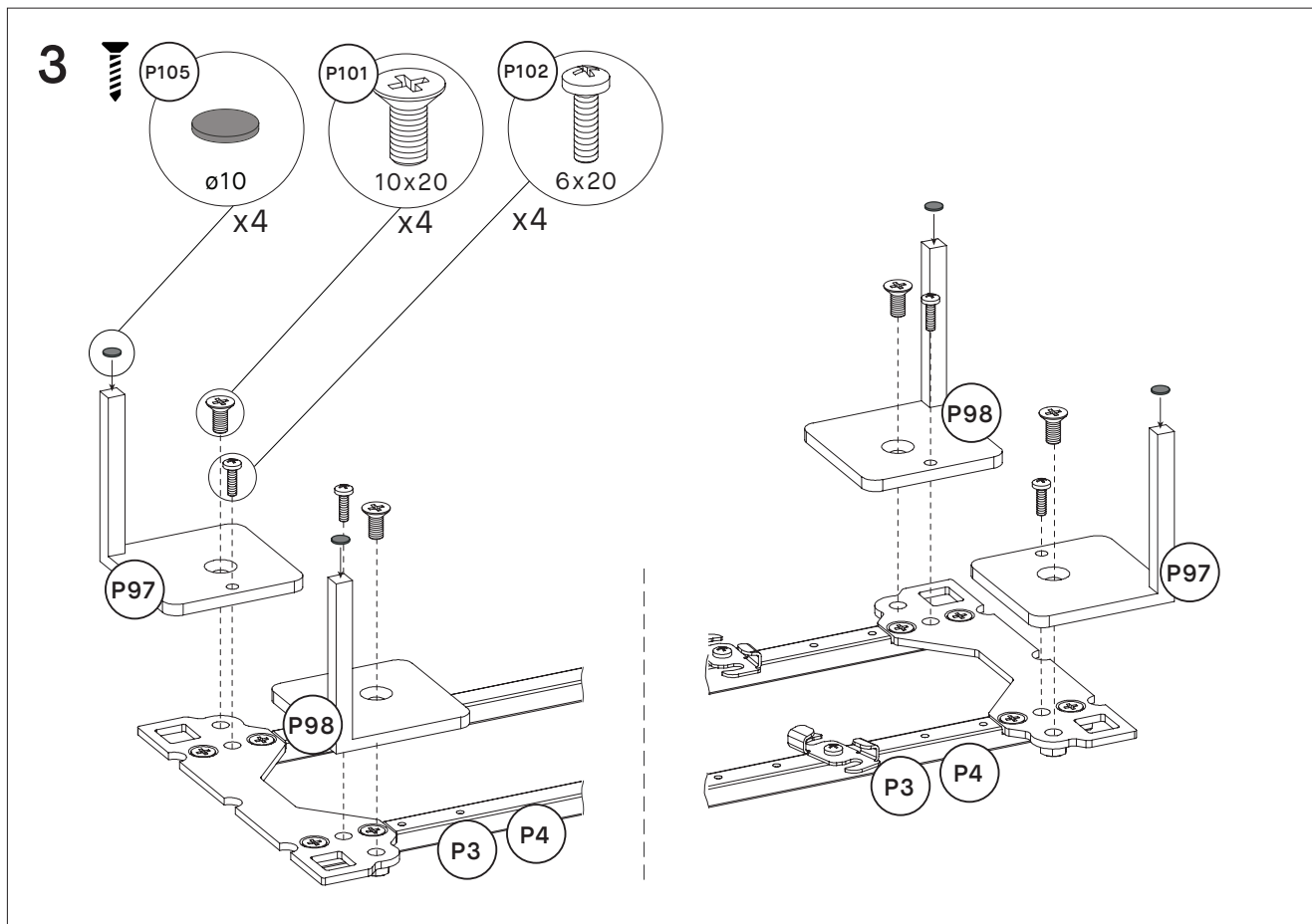


Have a look at the example constructions on the left and how the leg construction for these examples look like on the right. Find the one construction that matches your design the best and assemble the leg construction accordingly.



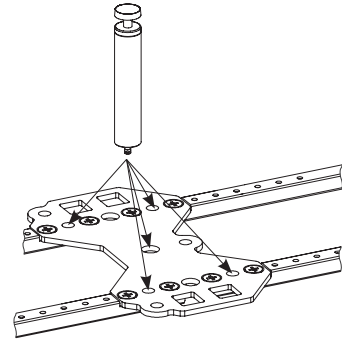
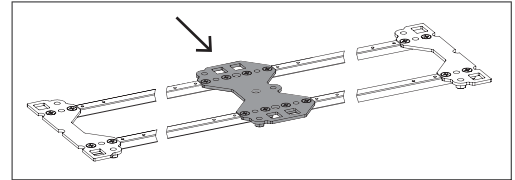
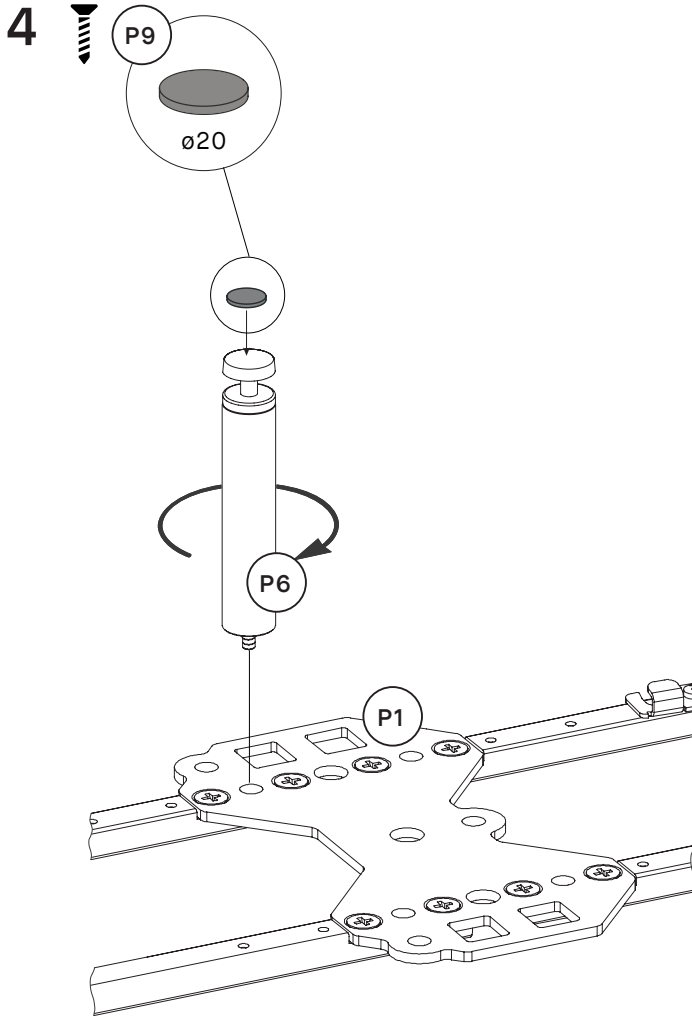


Prepare installation of support leg below inner sidewall: connect double platform **P1** and two profiles of **P3** or **P4** (depending on configuration) with the screw **P7**. Pay attention to illustration (above): make sure to connect the platform from the right side.



Connect LYNK leg **P97/P98** with the profiles **P3/P4** by using screw **P102** (6x20 mm) and **P101** (10x20 mm). To protect your floor surface from scratches, stick the paddings **P105** to LYNK legs (**P97 & P98**).

**NOTE:** Repeat step for all LYNK legs (based on your configuration).

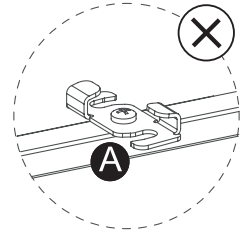
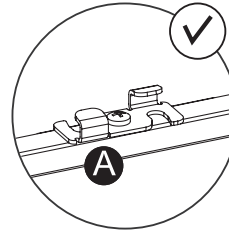
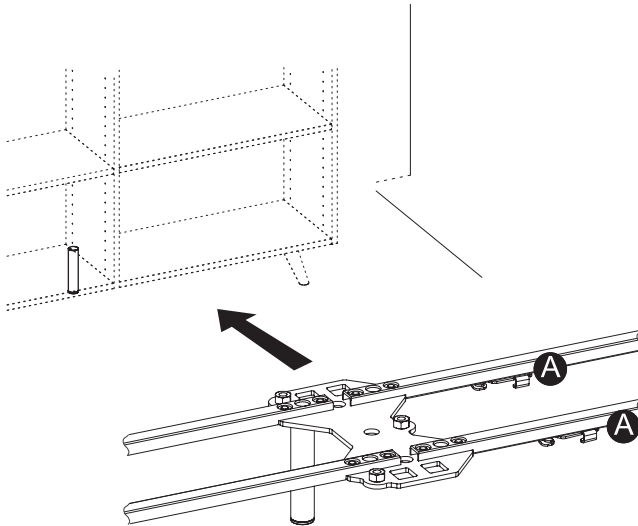


Screw support leg **P6** into the platform **P1**.  
To protect your floor surface from scratches,  
stick the paddings **P9** to support leg **P6**.

**NOTE:** Ideally the **support leg** is installed  
**at the back** of the actual product. However  
depending on the requirements (stability, floor  
level) it can be situated in the front or in the  
middle.

**NOTE:** Repeat step for all support legs (total  
number depends on the number of inner  
sidewalls of your configuration).

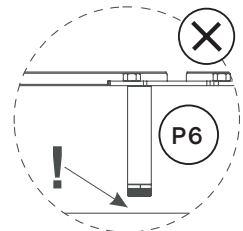
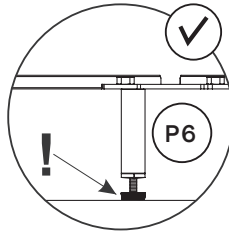
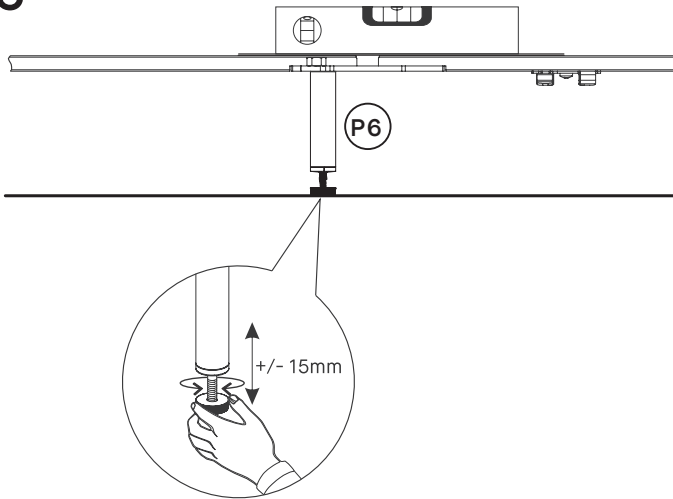
5



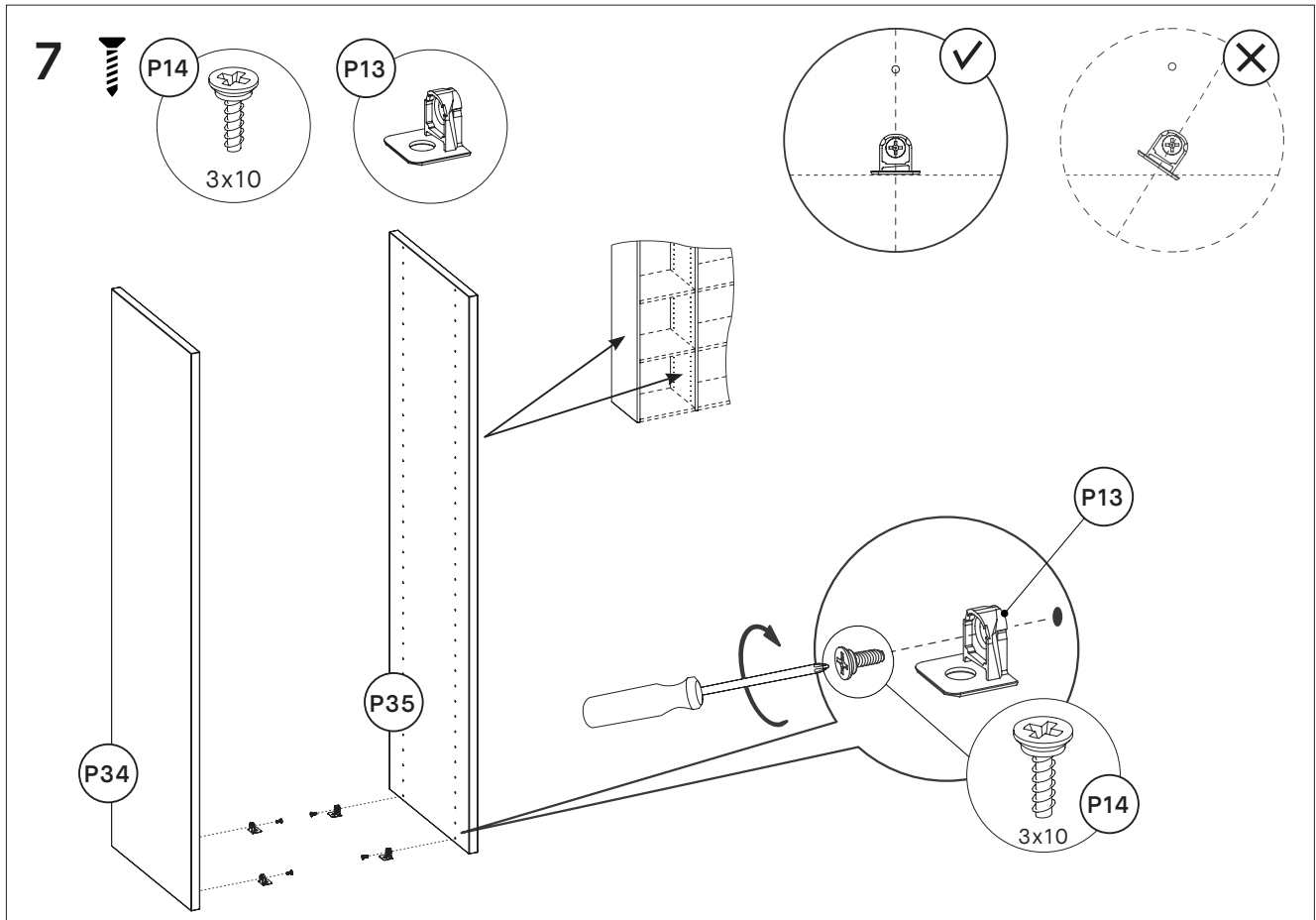
Place the leg construction at the target location of your furniture.

**NOTE:** Pay attention to the position of the hinge (as illustrated in A on the right).

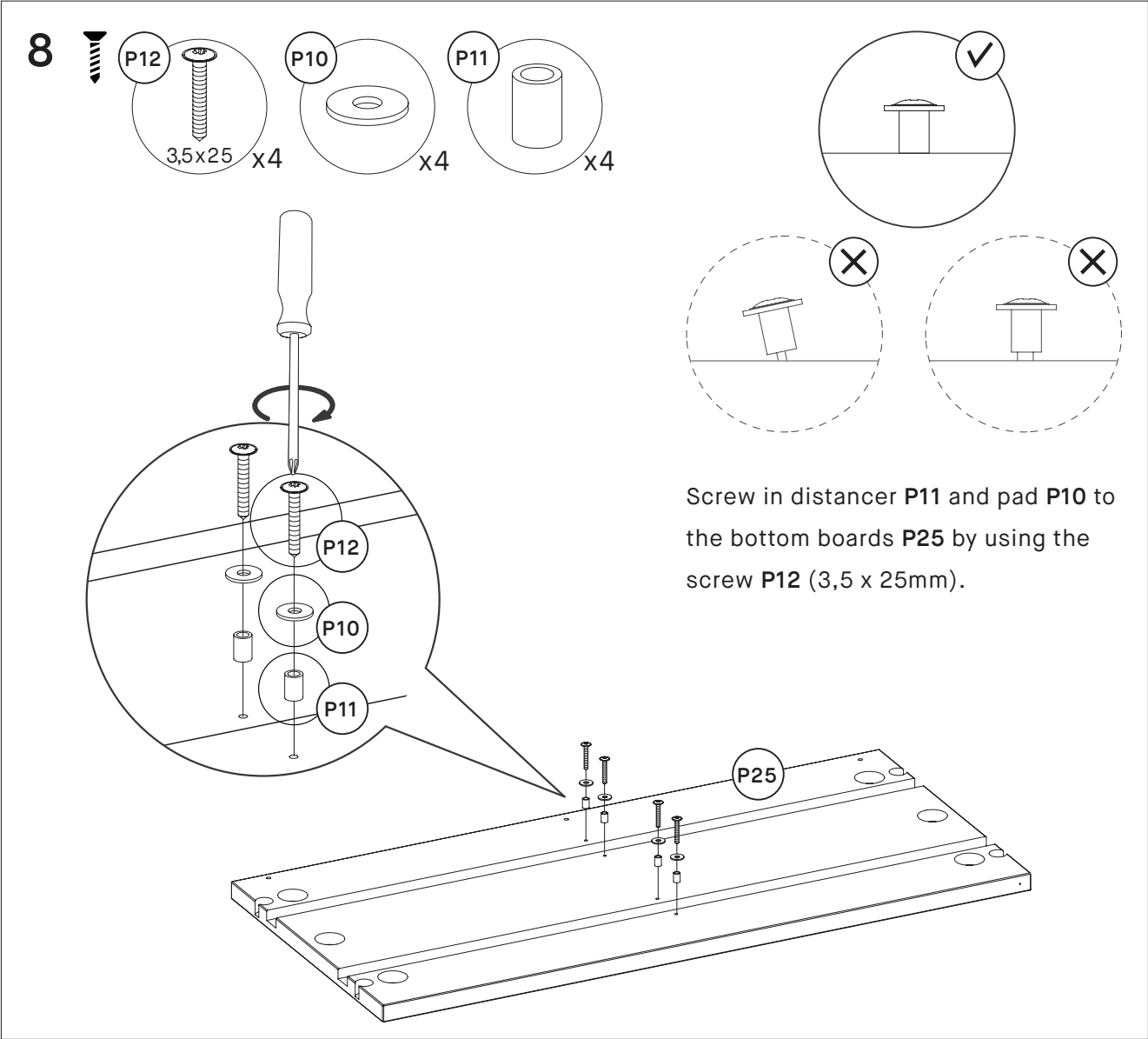
6

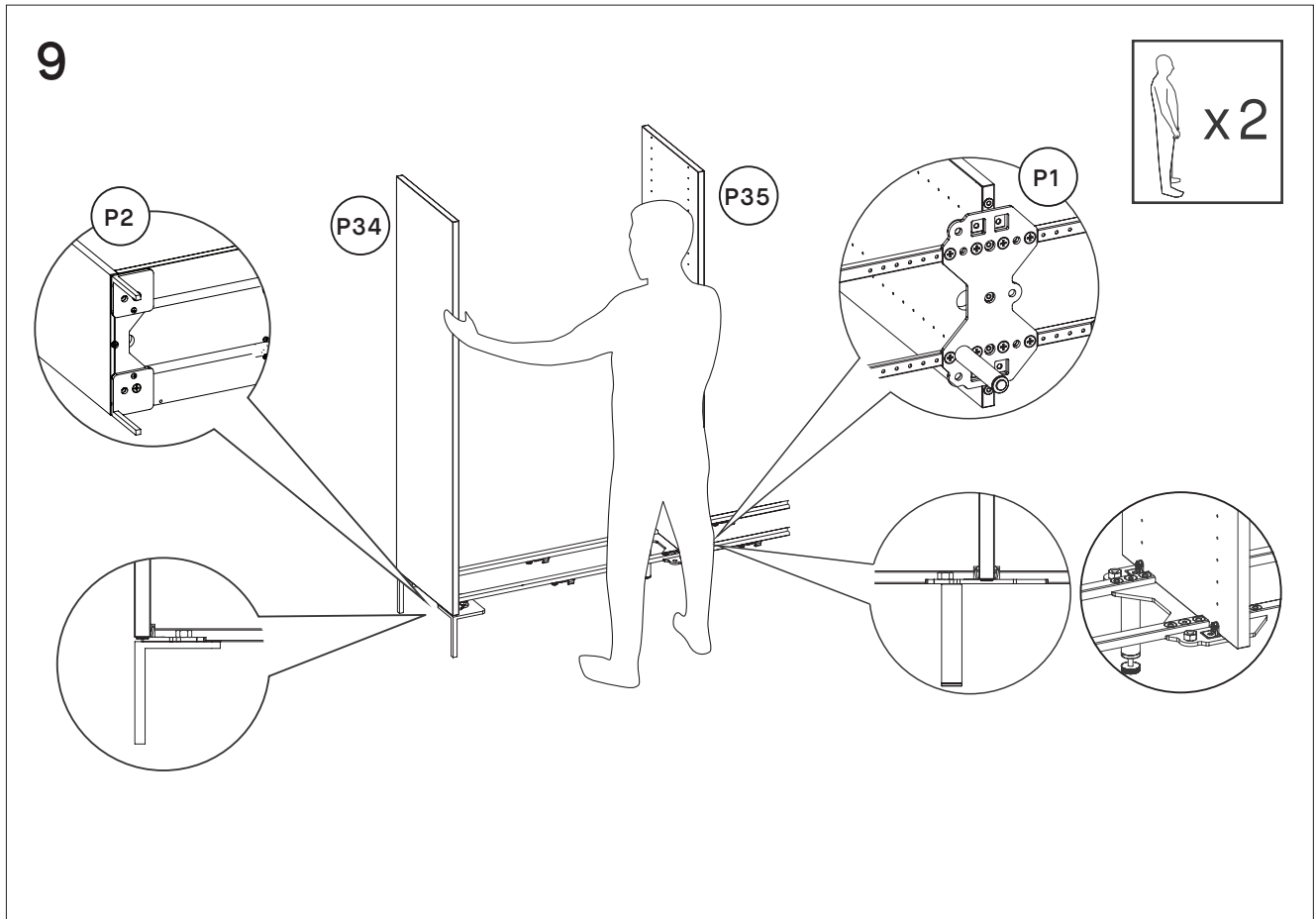


Level the construction horizontally by adjusting the support leg(s) as shown above. This step is particularly important as it prevents the construction from bending.



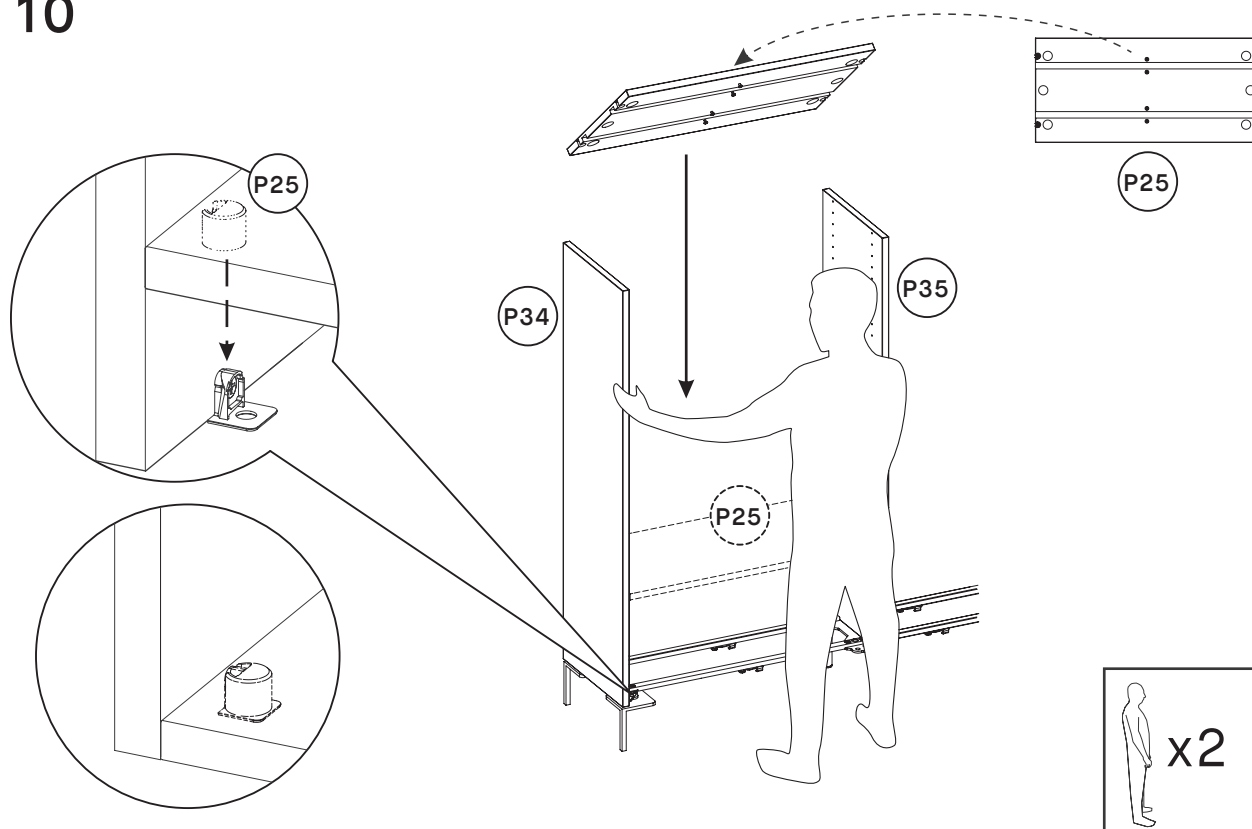
The metal shelf supports (P13) are there to hold the bottom boards. Screw the supports into all sidewalls as shown above (using screw P14). Please check your configuration to figure out where to screw in the support. You need to use them wherever you placed a board. Please refer to the “Don’t forget to measure” tip from the “Introduction” chapter on page 10 for details on how to position the metal shelf supports correctly.





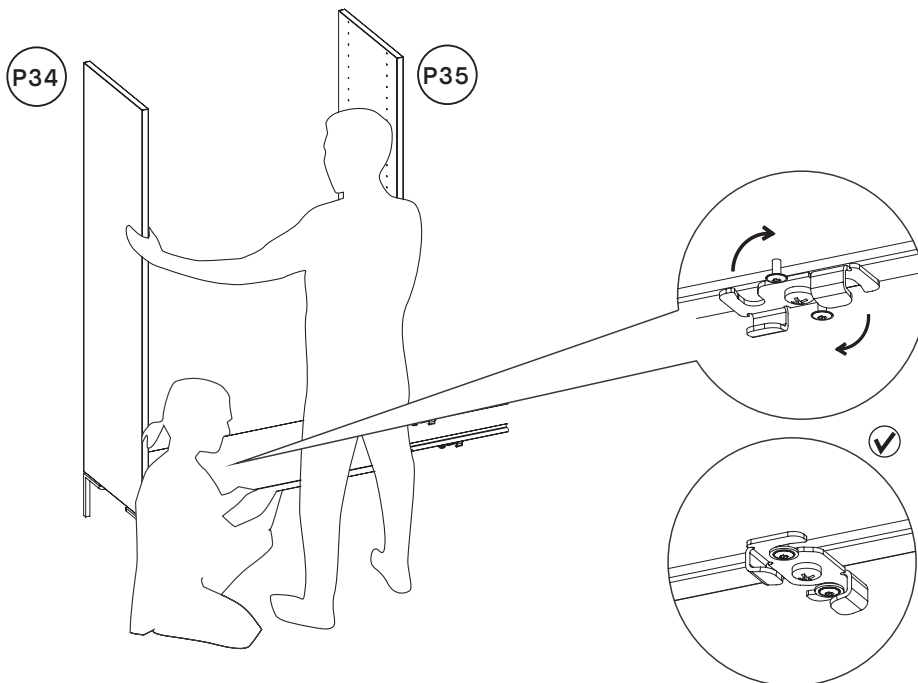
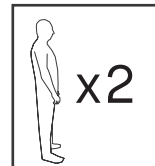
Now stick the first two sidewalls into their platform: the outer sidewalls go into the end of the single end platform **P2** and the inner sidewall in the middle of the double platform **P1**.

10



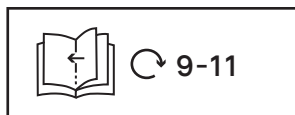
Place bottom boards **P25** on the platform by joining it to the sidewalls **P34/P35** with additional help.

11

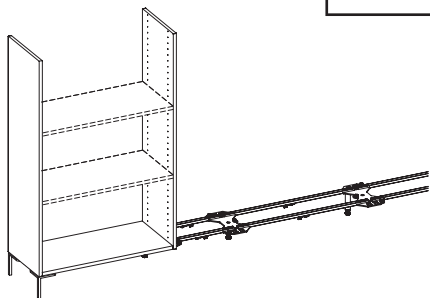


Screw in the sidewalls **P34/P35** to the bottom boards and turn the lock underneath the bottom board to connect the rails with the board. You should hear a 'click' sound once the lock is in its final position.

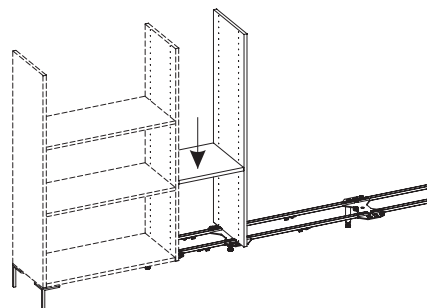
12



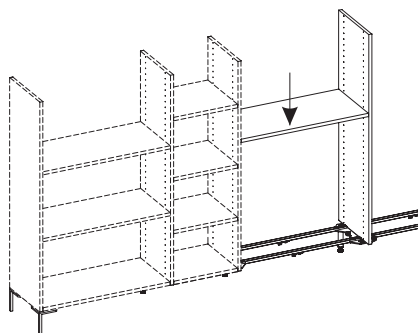
1



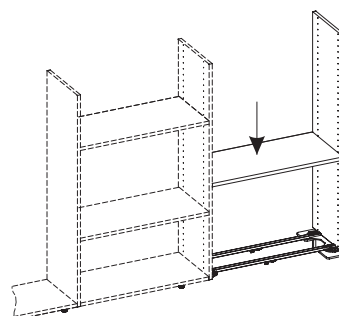
2



3



4



**NOTE:** Step 9 to 11 go together and have to be performed multiple times if your configuration requires it (depending on the number of sidewalls you have ordered). Please connect two sidewalls on the left side of your product with their platform (step 9), mount the bottom board in the middle of them (step 10) and finally lock the bottom platform with the rails (step 11). Repeat steps 9 to 11 by adding sidewalls one at a time, until you reach the outer sidewall on the right-hand side of your product.