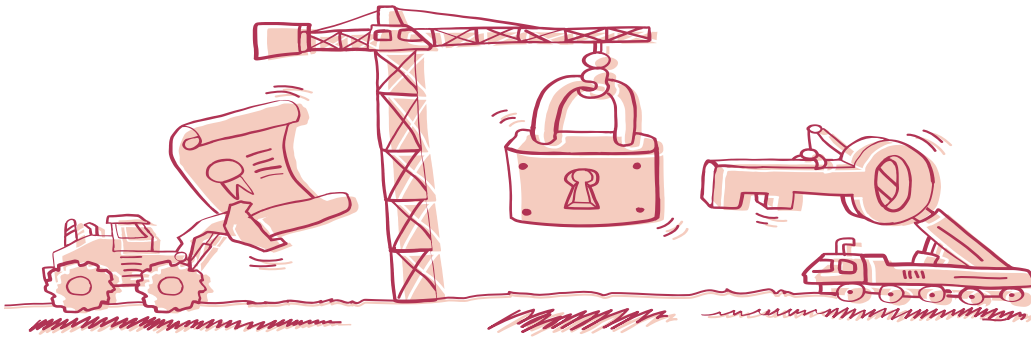


PRODUCT

# TLS at Fastly

Encrypting the best  
of the web



## The importance of SSL/TLS (Transport Layer Security)

Trust, privacy, and security are fundamental components of modern websites and applications. Developers and organizations use a cryptographic protocol that provides end-to-end security of data sent between applications over the internet<sup>1</sup> called TLS to help deliver the trustworthy, private, and secure experiences their customers expect.

Beyond trust, security, and privacy, TLS can also have positive (or negative) impacts on business performance. Google uses HTTPS as a ranking mechanism to prioritize search results — which means using TLS can improve SEO.<sup>2</sup> Browsers prominently display to end users when connections are secure, and provide warnings for domains without TLS. Today, TLS is approaching ubiquity and is increasingly viewed as a requirement. According to Mozilla, 80% of web pages loaded by Firefox are using TLS.<sup>3</sup>

### Fastly's approach to TLS

Fastly's vision is for all traffic to be served over secure HTTP, and we're acting on that vision by removing the barriers around TLS setup and management. Our portfolio of TLS offerings allows every organization to deliver secure and private experiences to their end users. We've built a portfolio designed to address a variety of customer types and needs — whether you just want to turn on TLS for a single domain or have detailed and complex security requirements.

<sup>1</sup>Internet Society - <https://www.internetsociety.org/deploy360/tls/basics/>

<sup>2</sup>Google - As of 12/17/15 <https://security.googleblog.com/2015/12/indexing-https-pages-by-default.html>

<sup>3</sup>Let's Encrypt - As of 10/3/19 - <https://letsencrypt.org/stats/#percent-pageloads>

# Our offerings

	FASTLY TLS	CONCIERGE TLS
	Frictionless setup and management for foundational encryption needs	Enterprise support add-on to address more complex requirements
Management via UI and API	✓	✓
Managed certificates (non-profit CA or Commercial CA) or Unmanaged certificates (bring your own)	✓	✓
Dedicated concierge support email address	—	✓
TLS configuration review and optimization	—	✓
Custom cipher suites outside our defaults (Requires dedicated IP*)	—	✓
Fallback certificate management and provisioning	—	✓
Large key support (above 2048 bits)	—	✓
Legacy TLS (1.0 and 1.1) support (Requires dedicated IP*)	—	✓
Adv. service pinning configuration (Requires dedicated IP*)	—	✓

\* Dedicated IP is charged separately

## Looking for high-volume TLS?

Platform TLS is designed to provide hosters or SaaS companies with delivery and management of hundreds of thousands of certificates. It includes an API for setup and can support a high-volume of domains. Platform TLS supports DV, OV, and EV certificates.

## Get started today

Simply visit [fastly.com/signup](https://fastly.com/signup) to get started with Fastly TLS, or reach out to [sales@fastly.com](mailto:sales@fastly.com) to discuss Concierge TLS or Platform TLS.

## Why Fastly

### Simple management

Frictionless setup and management enables you to focus on building great websites or applications — rather than wasting cycles configuring TLS. With Fastly, you can enable TLS on a domain in minutes with just a few clicks.

### Speed

Fastly provides worldwide TLS termination with powerful edge servers located closer to your users. This reduces the round trip times and the total performance costs of TLS handshakes.

### Fair pricing

Fastly TLS\* includes 5 free domains with dedicated certificates. Each additional domain is simply \$20 per month. Concierge TLS is priced to scale with your organization.

\*Using unmanaged certificates or managed certificates from non-profit CA providers. For Commercial CA pricing, visit [fastly.com/pricing](https://fastly.com/pricing).



**Try Fastly free**

[fastly.com/signup](https://fastly.com/signup)