

Wishco PRO[®]

CarboTek-based heater

ASSEMBLY AND OPERATION INSTRUCTION MANUAL

Please read the instructions carefully and retain them for future reference

INT

These instructions should be read carefully and retained for future reference

We cannot be liable for any damages caused by failure to observe these instructions..

Important safety instructions – read carefully

Wishco PRO heater is designed for safe operation. Nevertheless, installation, maintenance and operation of the heater can be dangerous. Observing the following procedures will reduce the risk of fire, electric shock, and injury to persons, and keep installation time to a minimum.

Please read carefully and save this instruction

1. Read all instruction before using this heater.
2. Remove the unit from it's packaging and check to make sure it is in good condition before using.
3. Do not let children play with parts of package (such as plastic bags).
4. Check the household voltage to ensure it matches the heater's rated specification.
5. Check the power cord and plug carefully before used, to make sure that they are not damaged.
6. Before unplugging the power cord, be sure to turn off the power. When energizing the unit, be sure your hands are dry to prevent from electric shock.
7. This heater is hot when in use. To avoid burns, do not let bare skin touch hot surfaces. If provided, use handles when moving this heater. Keep combustible materials, such as furniture, pillows, bedding, papers, clothes, and curtains at least 1 meter from the front of the heater and keep them away from the sides and rear.
8. Extreme caution is necessary when any heater is used by or near children or disabled and whenever the heater is left operating and unattended.
9. Do not use near or in the immediate vicinity of a bath or swimming pool or any source of liquid.
10. To protect against electric shock, do not immerse cord or plug in water or any other liquid.
11. Do not insert or allow foreign objects to enter any ventilation or exhaust opening, as this may cause an electric shock, fire or damage to the heater.
12. Always unplug the heater when not in use.
13. Connect to properly grounded outlets only.
14. Always plug heaters directly into a wall outlet/receptacle. Never use with an extension cord or relocatable power tap (outlet/power strip).
15. Do not allow cord to overhang the counter top where it can be easily pulled by children.
16. Do not put fingers or foreign objects into the grill while in operation.
17. Do not leave the appliance unattended when in use.
18. This heater is not intended for use in bathrooms, laundry and similar indoor locations, never locate heater where it may fall into a bathtub or other water container.

19. No liability can be accepted for any damage caused by non compliance with these instructions or any other improper use or mishandling.
20. This appliance is not intended for use by persons (including children) with reduces physical, sensory or mental capabilities or lack of experience and knowledge unless they have been given supervision or instruction concerning the use of the appliance by a person responsible for their safety. Children and vulnerable people should be supervised to ensure they do not play with the appliance.
21. Use this heater only as described in this manual. Any other use not recommended by the manufacturer may cause fire, electric shock, or injury to persons.
22. Do not operate any heater with a damaged cord or plug or after the heater malfunctions, has been dropped or damaged in any manner. Disconnect power at service panel and have heater inspected by a reputable electrician before reusing. If the supply cord is damaged in any way, it must be replaced by the manufacturer or its service agent or a similarly qualified person in order to avoid a hazard.
23. Do not run cord under carpeting. Do not cover cord with throw rugs, runners, or similar coverings. Do not route cord under furniture or appliances. Arrange cord away from traffic area and where it will not be tripped over.
24. To disconnect heater, turn controls to off, then remove plug from outlet.
25. To prevent overheating of this appliance, keep the air inlets and outlets clean and free of anything that may cause blockage. Check all inlets and outlets from time to time to ensure it is clear of any dirt or dust accumulation. DO NOT COVER.
26. A heater has hot and arcing or sparking parts inside. Do not use it in areas where gasoline, paint, or flammable liquids are used or stored.
27. Parts of the heater may exceed 200 °C , contact with the heating tube, reflector, or mental parts near the heating tube, may cause severe BURNS . To avoid burns, do not let bare skin touch hot surface.
28. NEVER place hands under the heating elements. ALWAYS allow heating element to cool at least 10 minutes before touching the heating tube or adjacent parts.
29. This product contains recyclable materials. Do not dispose this product as unsorted municipal waste. Please contact your local municipality for the nearest collection point.

Introduction

Wishco PRO infrared heater produce instant and comfortable heat like the sun. These robust and weatherproof heaters are designed for domestic and commercial heating applications within indoor and outdoor areas.

Voltage (V)	220 – 240 V AC
Wattage (W)	1500/2000/2500 W
Hertz (Hz)	50-60
Dimensions W x H x D (mm)	680 x 130 x 140
Weight (kg)	3.0

Installation

Tools needed:

- **Pencil**
- **Hammer**
- **Level**
- **Screwdriver**
- **Power drill and drill bits**

A wall mounting bracket is provided with Wishco PRO which has been specifically designed to allow this product to be fitted to a ceiling before drilling the holders for the ceiling is solid and that there are no hidden water pipes or electric wires. The heater must be installed no less than 30 cm from side walls and no less than 1.7 m off the floor.

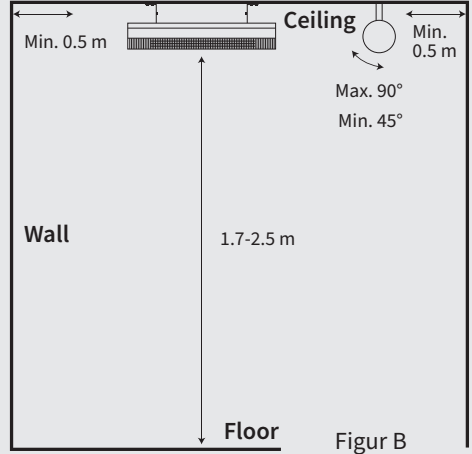
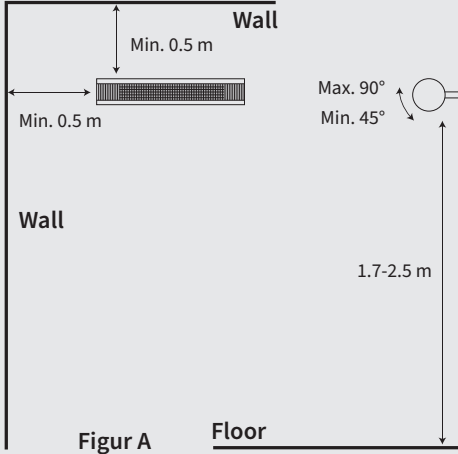
Important

Ensure that the supply cables are well mounted and that they do not come into contact with the reflector of the heater or that they do not trail into the heated area, the supply cable can be fixed to the metal mounting bracket behind the heater with plastic zip ties.

1. This heater should be installed by a competent person, i.e. a qualified electrician.
2. Always disconnect the heater from the electricity supply and allow it to cool before installation.
3. For ceiling mounting, the lowest part of the heater must be located at or above a minimum height of 1.7 m from ground level, so that the heater can not be touched when in operation.
4. For ceiling mounting, there must be a 1.7 m distance from your appliance to the ground.
5. When installed to the ceiling, there must be a distance of 0.5 m between corners and the appliance.
6. The distance of your appliance from living beings is to be min 1 m.
7. The distance from the front side of the heater to materials such as wood, carton, cloth etc., must be min 1 m.
8. When mounting to a ceiling, do not position the heater at an angle more than 90° and less than 45°.
9. The supply cable must be at the lower end of the heater if the heater is installed at an angle or vertically.
10. Keep the supply cord away from the body of the heater which will get hot during use.
11. Do not install the heater on an inflammable surface.
12. Observe the minimum safe distance between the heater body and the inflammable surfaces when mounted.
13. The heater should always have a minimum clearance of 0.5 m from a ceiling and adjacent walls.
14. If the heater is to be used outside, a weatherproof outlet is recommended.
15. Before drilling ensure that there are no wires or water pipes in the area where the heater is to be installed.
16. The heater must be installed on the mounting brackets provided.
17. Fasten the brackets securely to the mounting surface and the backside of the heater using the nuts and screws supplied.
18. Fasten the heater securely on the brackets using the nuts and bolts supplied.
19. The brackets can be used to adjust the direction of the heater, adjust the heater angle by loosening the two bolts on the wall mounting bracket, tighten the bolts again when the desired angle is reached.

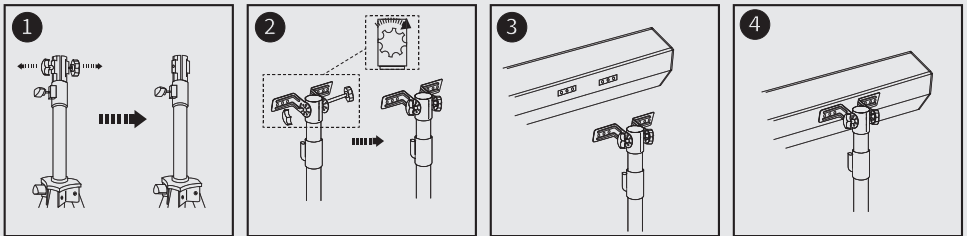
Wall/ceiling installation

L shaped standard bracket (included), the angle can be adjusted to fit the heating area.



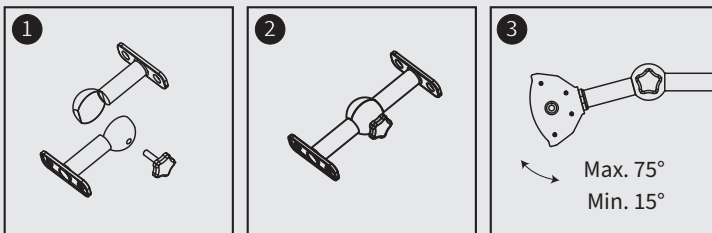
Installation with Wishco Basepod stand or Wishco Tripod stand

Sold separately



Installation with Wishco Luxury Bracket

Sold separately



Remote control instructions

Remote control instructions	
Button	
1	Turn heater ON/OFF
2	Increase sleep time and temperature (max. level 2)
3	Decrease sleep time and temperature (min. level 1)
4	Enable level setting mode [Default: starts at last level used]
5	Sleep timer, hours

Please note

All Wishco PRO heater and their remote controls have the same frequency, so it is possible to control several heaters with just one remote control.

The pushbutton

at the right end of the heater can be used for manual operation without remote control.

Inserting batteries

Insert 2 AAA / Alkaline type batteries into your remote control.

1. Flip the back of your remote control and pull out battery cover. Insert the batteries in accordance with the instructions and polarity of the batteries.
2. Change the batteries in the same way as described above.

Notice

1. Replace the old batteries with batteries of the same type. Otherwise, your heater may not function well.
2. Remove the batteries in case of long terms of disuse to prevent leakage, which may impair your remote control.
3. Do not allow water or liquid to get into the remote control.

Caution

When the appliance is not operated for a long time, cleaning or maintenance is conducted, or when the location of the heater is changed, the heater should be turned to OFF and unplugged from the electrical connection.

Periodic inspection and removal of dirt and contaminants will ensure that the equipment can be operated safely.

Troubleshooting

1. Check if the power cord is plugged into an electrical outlet. If not, plug in.
2. Check if electricity to the main fuse is working.
3. Check to see if the thermostat knob is in the ON position.
4. Check the thermostat setting. The heater may be off because it has reached the desired temperature setting.

Cleaning and maintenance

Regular and careful cleaning helps your infrared heater operate efficiently for many trouble-free years.

To clean your heater, follow the steps below:

1. Unplug the power cord for your safety before cleaning your appliance.
2. Make sure the heater is cool before continuing.
3. To keep the heater clean, the outer shell may be cleaned with a soft, damp cloth. You may use a mild detergent if necessary. After cleaning, dry the unit with a soft cloth. (CAUTION: DO NOT let liquids enter the heater).
4. DO NOT use alcohol, gasoline, abrasive powders, furniture polish or rough brushes to clean the heater. This may cause damage or deterioration to the surface of the heater.
5. DO NOT immerse the heater in water.
6. Wait until the heater is completely dry before use.

Storage

Store the heater in a cool, dry location when not in use to prevent dust and dirt build-up.

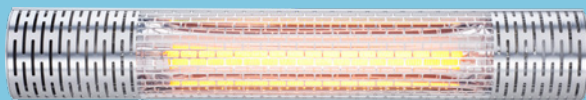
Use packaging carton to store.

Attention

1. Always disconnect the heater from the electricity supply, and allow it to cool before attempting to work on it.
2. If the heater has collected dust or dirt inside the unit or around the heating element, the unit will have to be cleaned by a qualified service agent. Do not operate the heater in this condition.
3. The only maintenance required is cleaning of the external surfaces of the heater.
4. Do not touch the heating element with bare fingers, as residue from your hand could affect the life of the lamp. If it is accidentally touched, remove finger marks with a soft cloth moistened with methylated spirits or alcohol.
5. Do not attempt to repair or adjust any electrical or mechanical function on this heater.
6. The heater contains no user serviceable parts. Should the product suffer damage or breakdown, it must be returned to the manufacturer or its service agent.
7. Damaged supply cords are to be replaced by the manufacturer, service agent or similarly qualified person in order to avoid hazard.

Recycling

At the end of the electrical product's useful life, it should not be disposed of with household waste. Please recycle where facilities exist. Check with your local authorities or retailer for recycling advice in your country.



Contact:
Information:

info@wishco.eu
wishco.eu

wishco^o
- heating for everyone