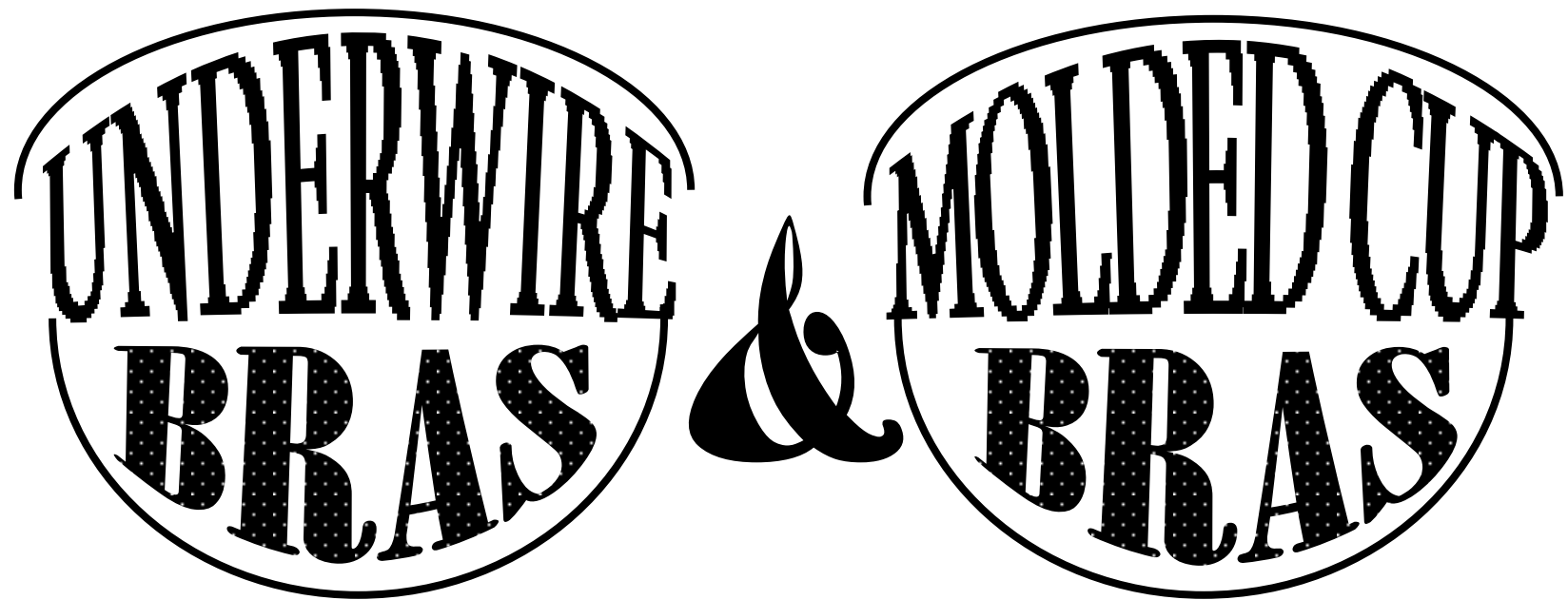


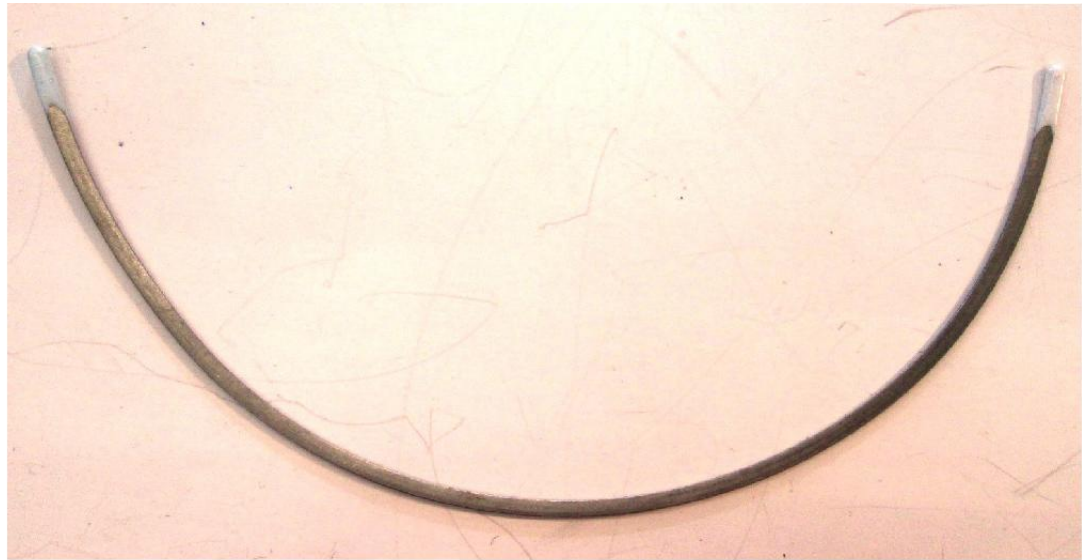
URBN STANDARDS FOR



Amanda Hunt • Tammy England • July 2015

WIRES, BONING AND CASINGS

WIRE -
NON COATED METAL
WITH DIPPED ENDS



WIRE/BONE CASINGS -
BRUSHED CASING WITH
A RIBBON BACKING



OUTSIDE



INSIDE

BONING-
3/16" FLEXIBLE
PLASTIC BONE
WITH ROUNDED
EDGES



STANDARD WIDTH ELASTICS

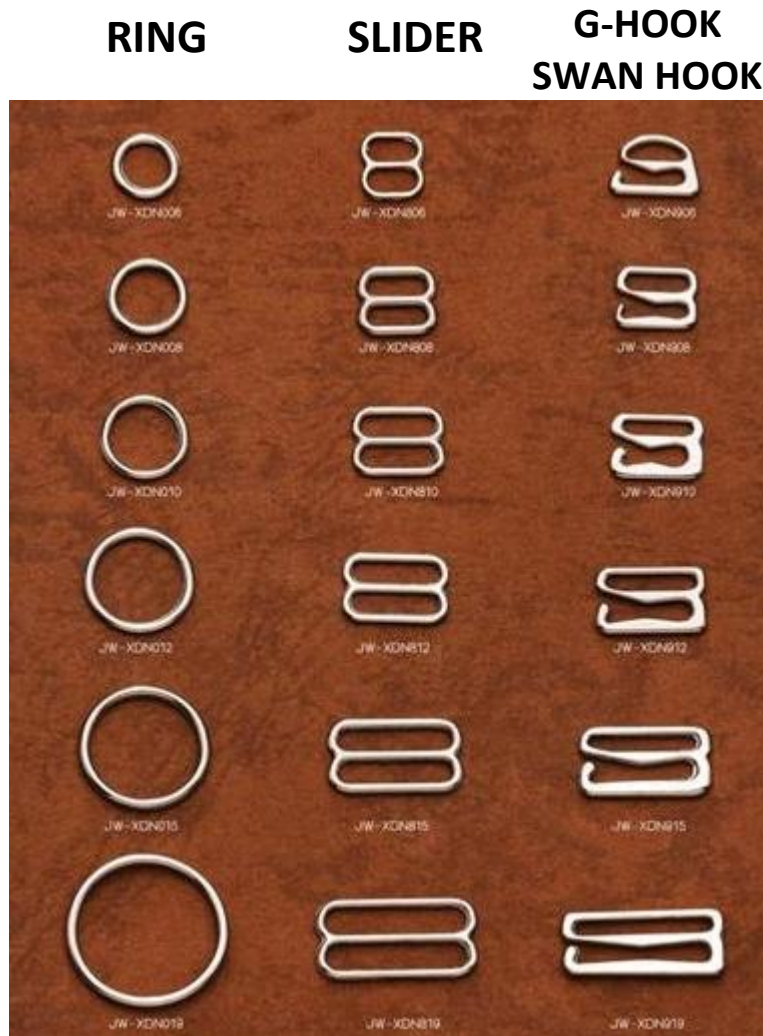
BOTTOM OPENINGS - 3/8" SOFT KNIT ELASTIC WITH BRUSHED SIDE AGAINST SKIN



3/8" STRAP ELASTIC WITH BRUSHED SIDE AGAINST SKIN



Bra Findings



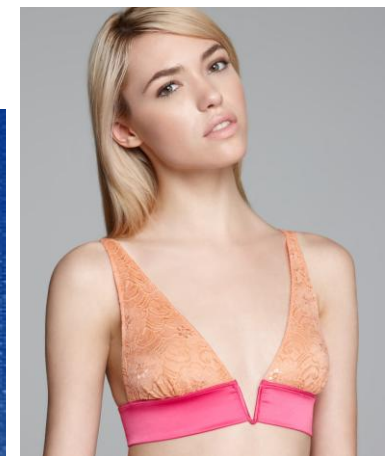
J-Hook

Hook faces out. This allows wearer to hook strap rings together to switch to racerback styling.



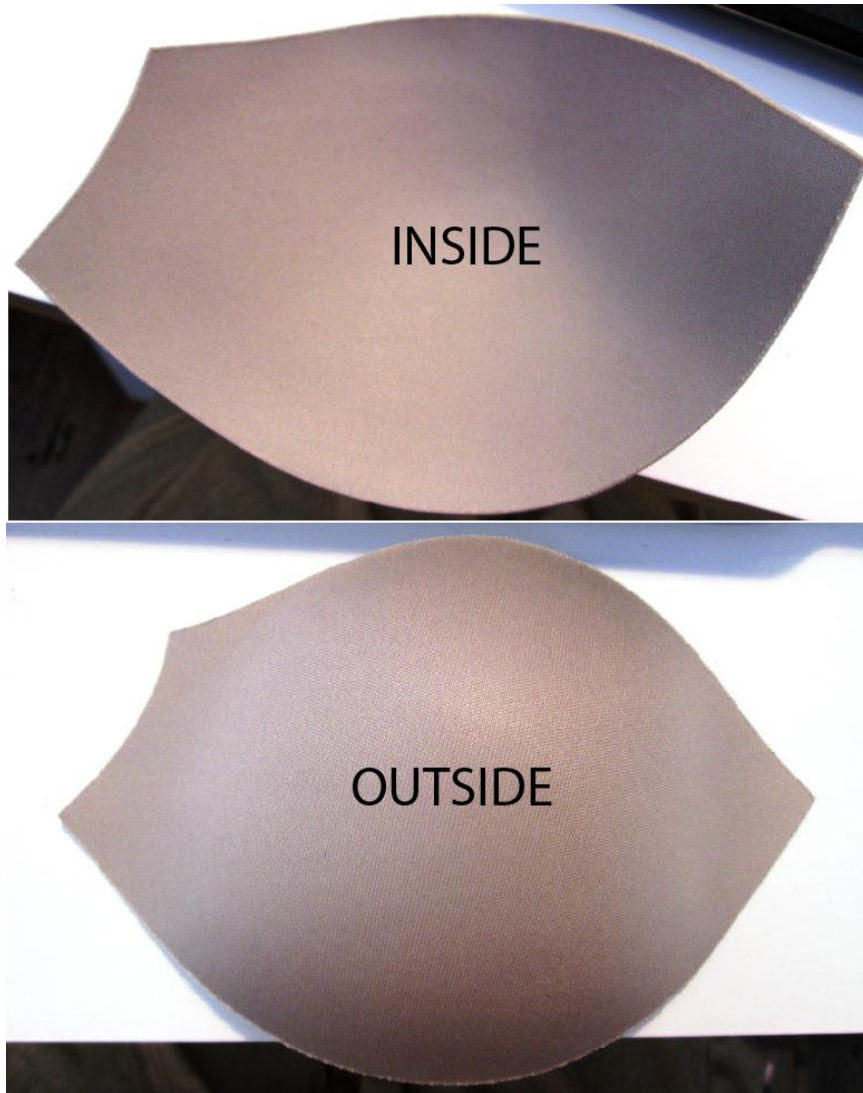
V-Wire / U-Wire

Padding must be added to construction for comfort.

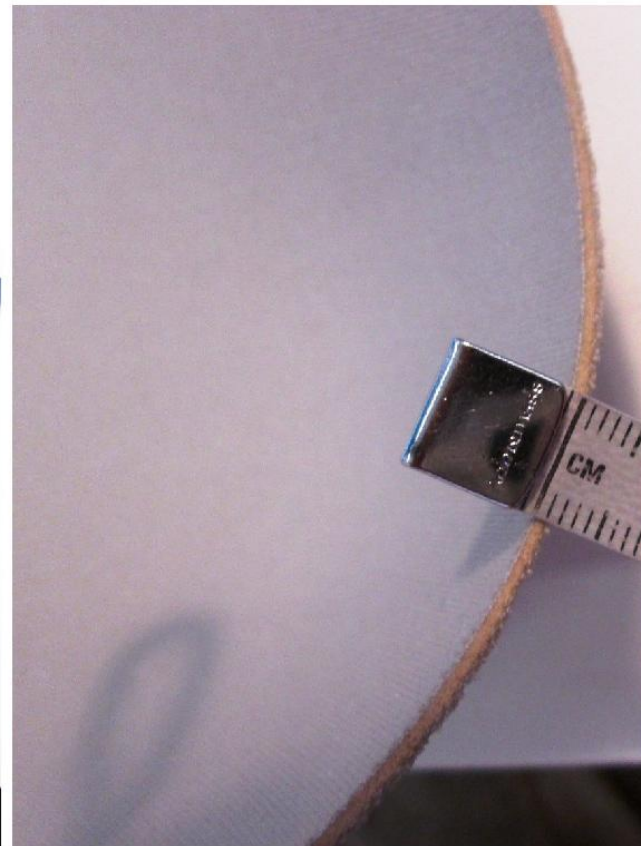


Graduated Cup

Molded cup with no bump. Padding is slightly thicker @ apex and tapers along the edges.

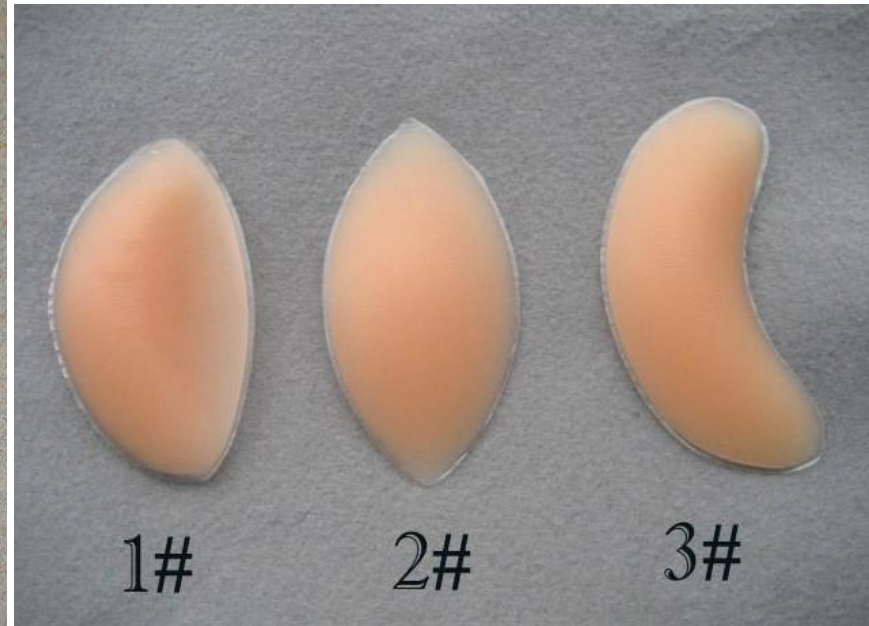


1.5 MM foam
@ neckline and
armhole edge



Bump Pad (Cookie or Bra Pad)

Removable or non-removable bottom cup padding usually made of fiber-fill, lightweight silicone or thermoplastic polyurethane (TPU) and filled with air, water or oil.



Bras with removable bump pads must have a hidden internal pocket at the bottom of the cup. The pocket opening can be at the armhole side or center of the cup.



Bump Cup

Molded cup with non-removable bump pad shaped into inside of cup.



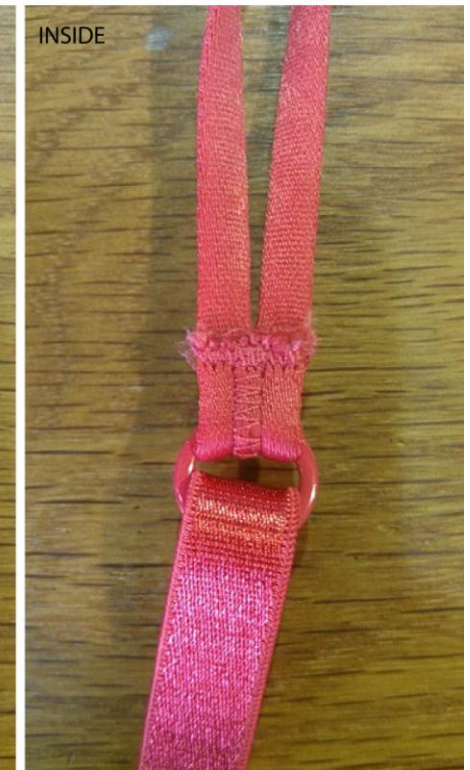
Rouleau or Spaghetti Strap

Thin tubes made of fabric, ribbon or elastic, generally 1/8" in diameter. The cylindrical shape differentiates a rouleau from a 1/8" wide ribbon or flat elastic strap.

DOUBLE ROULEAU CONSTRUCTION - STRAP JOIN



DOUBLE ROULEAU CONSTRUCTION - RING JOIN



Strap elastic must be trimmed 1/16" from bartack



BRA LININGS:

*POWER MESH- NYLON/SPAN BLEND WITH STRETCH, USED TO LINE SHEER FABRICS ALL OVER FOR SUPPORT AND OPACITY. FABRIC WEIGHT CAN VARY FROM LIGHT TO MAX SUPPORT



*15 DENIER STRETCH TRICOT (TRICOT MESH) - 100% NYLON WITH MECHANICAL STRETCH, USED TO LINE SHEER FABRICS FOR SUPPORT AND OPACITY. MOSTLY USED ON UNDERWIRE CUPS. ALSO USED FOR SIDE SLINGS ON LARGER CUP SIZES



*15 DENIER STABILIZED TRICOT (RIGID MESH) - 100% NYLON, NO STRETCH. USED AT FRONT AND SIDE CRADLE TO STABILIZE WIRE. CAN BE FUSED TO SELF FABRIC TO ELIMINATE PUCKERING/STRETCHING



Cup Placement at Frame

Cups can be set to the Interior of the frame or the exterior of the frame. Both will always have the felt channeling at interior for the underwire. Bras with no under bust frame will always be set to the exterior.



CUP SET TO INTERIOR



CUP SET TO EXTERIOR

Construction Options

3 step zig zag stitch OR Merrow & 1 step zig-zag stitch (a.k.a. baby zig-zag stitch): To join body to wider bottom band. Zig-zag stitch is visible at face.



INSIDE

OUTSIDE

3 step zig zag stitch – For armhole, wing top edge & bottom edge elastic. Excellent for joining elastic to a body fabric that has a lace edge. All stitching is visible at face.



INSIDE

OUTSIDE

1 step zig-zag stitch, turn & topstitch with 1 step zig-zag stitch – For armhole, cup top edge & wing top edge & bottom edge elastic. Stitching is less obvious/ visible, only topstitch zig-zag is visible at face.



INSIDE

OUTSIDE

1 step zig-zag stitch, turn & topstitch with 1/8"gg 2N bottom coverstitch #406– For bottom edge elastic. Sporty look with 2N stitch only visible at face.



INSIDE

OUTSIDE

1/4" - 5/16" elastic in turnback, 3/16"gg 2N Bottom Coverstitch #406 – For bottom edge. Sporty/ clean look. Good option for when elastic cannot be DTM.



INSIDE

OUTSIDE

1/8"gg Top & Bottom coverstitch straddling binding edge #602 – For armhole, neckline edge and back top edge. Smooth clean finish, blurs binding edge for clean look. Top & Bottom coverstitch is visible at face.



INSIDE

OUTSIDE

Clean finish to cup – For contoured cup top edge. Must be joined to a molded cup top edge, cannot be used on non-foam cups. Clean look, no visible stitches.



INSIDE

OUTSIDE

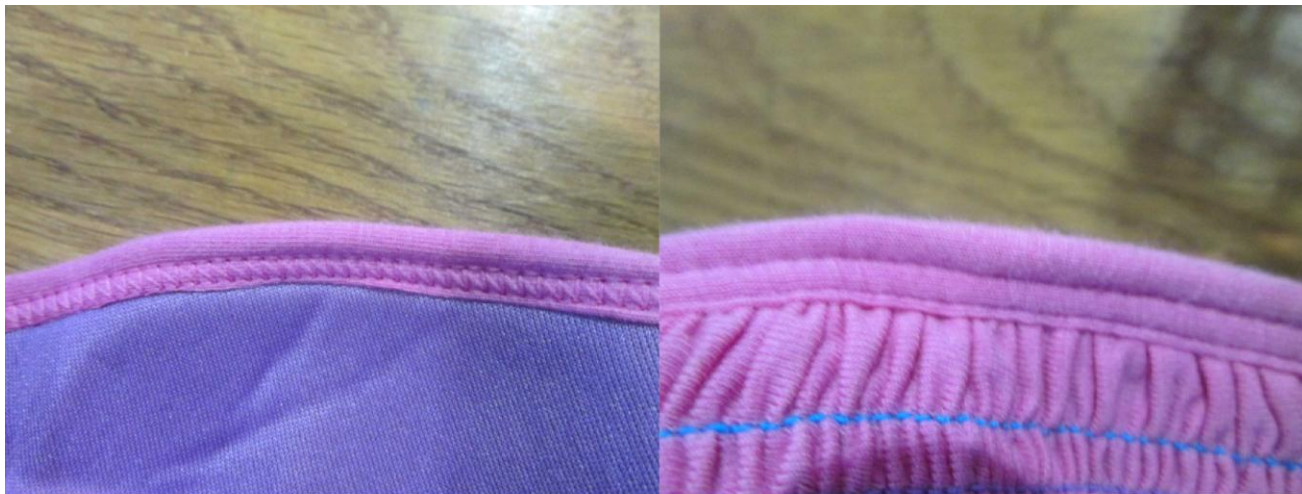
SN Topstitch at Binding – For cup top edge. Limited stretch at top edge, not ideal for fabric cups with a lot of stretch. All stitching is visible.



INSIDE

OUTSIDE

2N Bottom coverstitch at Binding #406 – For cup top edge & armhole. Better stretch than single needle version, but more sporty look. 2N stitch is visible.



INSIDE

OUTSIDE

Clear mobilon or 1/8" tape elastic with 1 step zig-zag stitch – For cup top edge & lace edges that are turning/rolling. Use on a cup that is using the fabric's lace edge at top edge. Excellent for correcting stretch lace that is turning or rolling – apply elastic tape 1/16" from lace edge. Zig-zag stitch is visible at face but depending on the lace pattern & placement, the stitches are usually hidden.



INSIDE

OUTSIDE



INSIDE

OUTSIDE

Tack fabric to cup in 4-5 places along edge— For cup top edge. Use on a cup that is using the fabric's lace edge at top edge. If sewing tension is correct, the stitches are not visible.



INSIDE

OUTSIDE

SN Topstitch along edge— For cup top edge. Use on a cup that is using the fabric's lace edge or decorative trim at top edge. Stitches can be hidden in trim or in lace pattern.



INSIDE

OUTSIDE

Tricot Tape along inside top edge— For cup top edge. Use on a cup where stretch along top edge is not desired. Can be used on a molded cup with clean finish edge to correct a stretched edge. The visibility of stitches depends on construction.



INSIDE

OUTSIDE

Silicone Elastic for Strapless Bras – Set along top or both Top/bottom edges of strapless styles to keep bra in place. Standard width is 3/8" with 1/8" row of silicone in center. Set on with baby zig zag @ top and bottom edges of elastic through to self



INSIDE