

BHLDN BRIDAL TICKETING GUIDELINES

CLASSES 2110 & 2115

DLBL

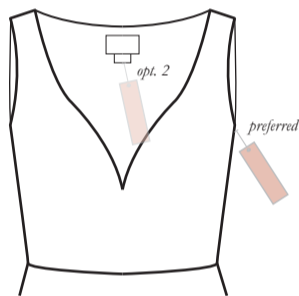


Use 3x3 direct label only, all necessary tickets will be applied in-store

BHLDN RETAIL TICKETING GUIDELINES

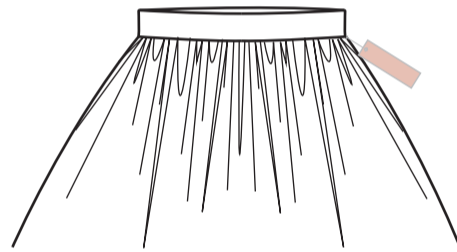
EXCLUDING BRIDAL GOWNS & SEPARATES (CLASSES 2110 & 2115)

TOPS, DRESSES, JUMPSUITS



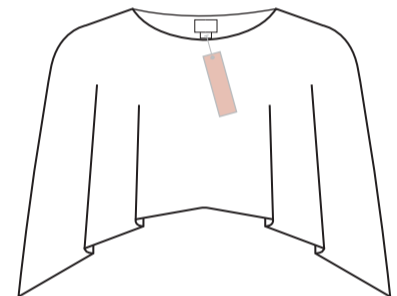
Swift-tack ticket at wearer's left armhole at SS, or 1/2" below for sleeveless styles. If fabric can be damaged, place on label at back neck.

SKIRTS & PANTS



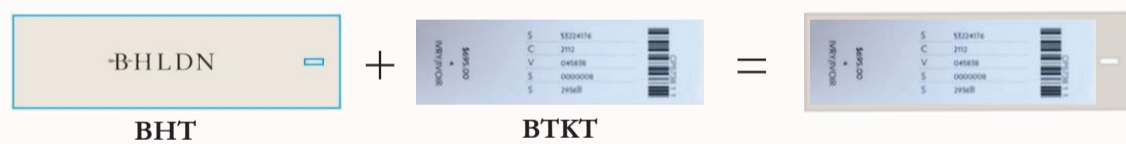
Swift-tack ticket on wearer's left side seam at the bottom of the waistband, or 1 1/2" below top edge if there is no waistband.

WRAPS & CAPES



Swift-tack ticket to main label at back neck.

Assembling your BHLN retail tickets:



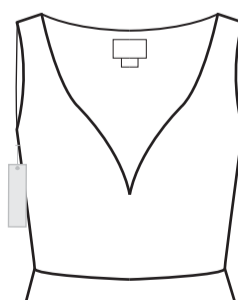
BHLDN DIRECT TICKETING GUIDELINES

EXCLUDING BRIDAL GOWNS & SEPARATES (CLASSES 2110 & 2115)

DLBL



All classes - 3x3 direct label



BHDNR*



Required for maids, reception, occasion, and flower girl
(classes 2111, 2112, 2113, 2114) -
swift-tack return tag in seam allowance
1" below wearer's right armhole.

*BHDNR must be ordered as a catalog item, instructions can be found on URBNVendor.com in "How Do I Pre-Ticket My Products?"