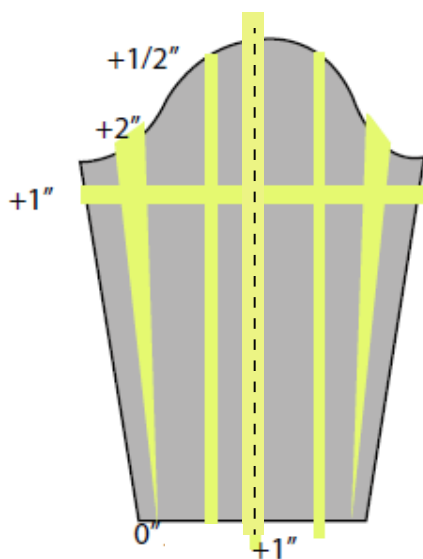


SHOULDER FORWARD +1/2"
 FRT NK DROP under 5" +1/2"
 FRT NK DROP under 10" +1"
 X-CHEST FROM HPS +1/2"
 ARMHOLE STRAIGHT +1 1/4"
 BUST DART APEX FROM HPS +2"
 BUST DART LENGTH= 6 1/2"~ 7"
 WAIST DART LENGTH +1"
 CF WAIST PLACEMENT FROM HPS +3"
 FRT BODY LENGTH FROM HPS +3"
 SIDE SEAM LENGTH FROM AH +1"
 BK NK DROP +1/4"
 X-BACK PLACEMENT +1/2"
 CB WAIST PLACEMENT FROM HPS +1 1/2"

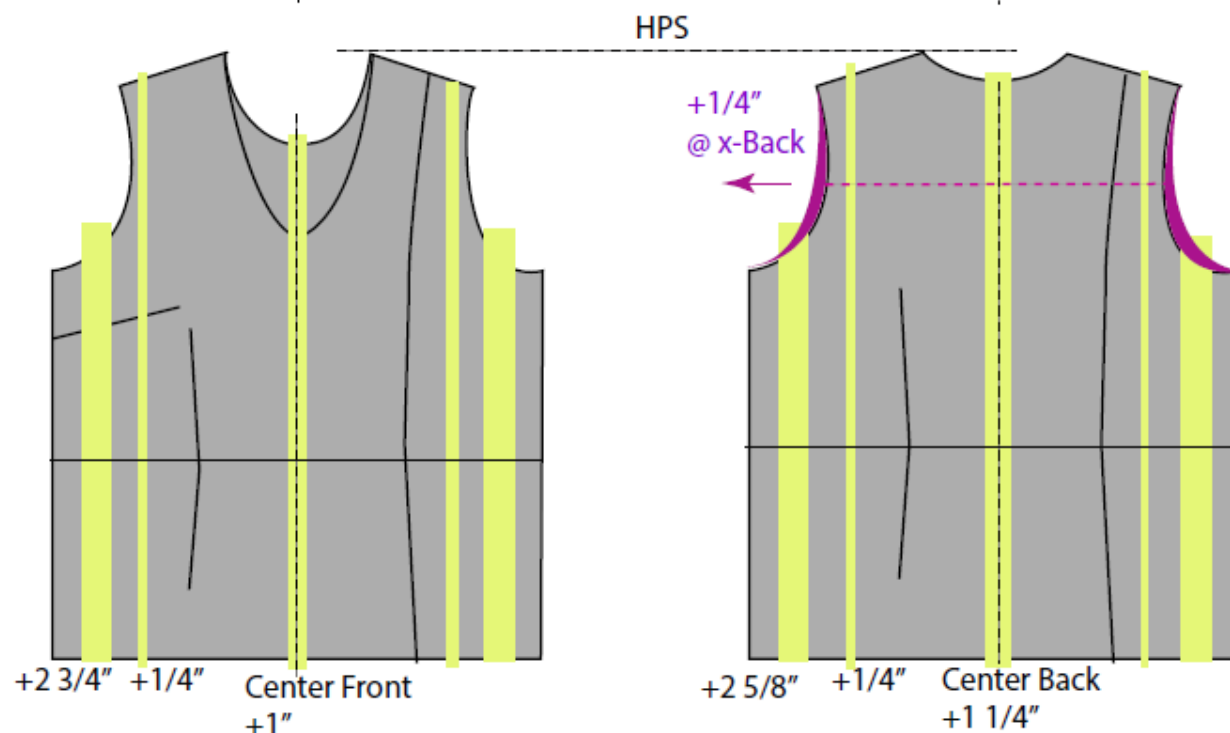
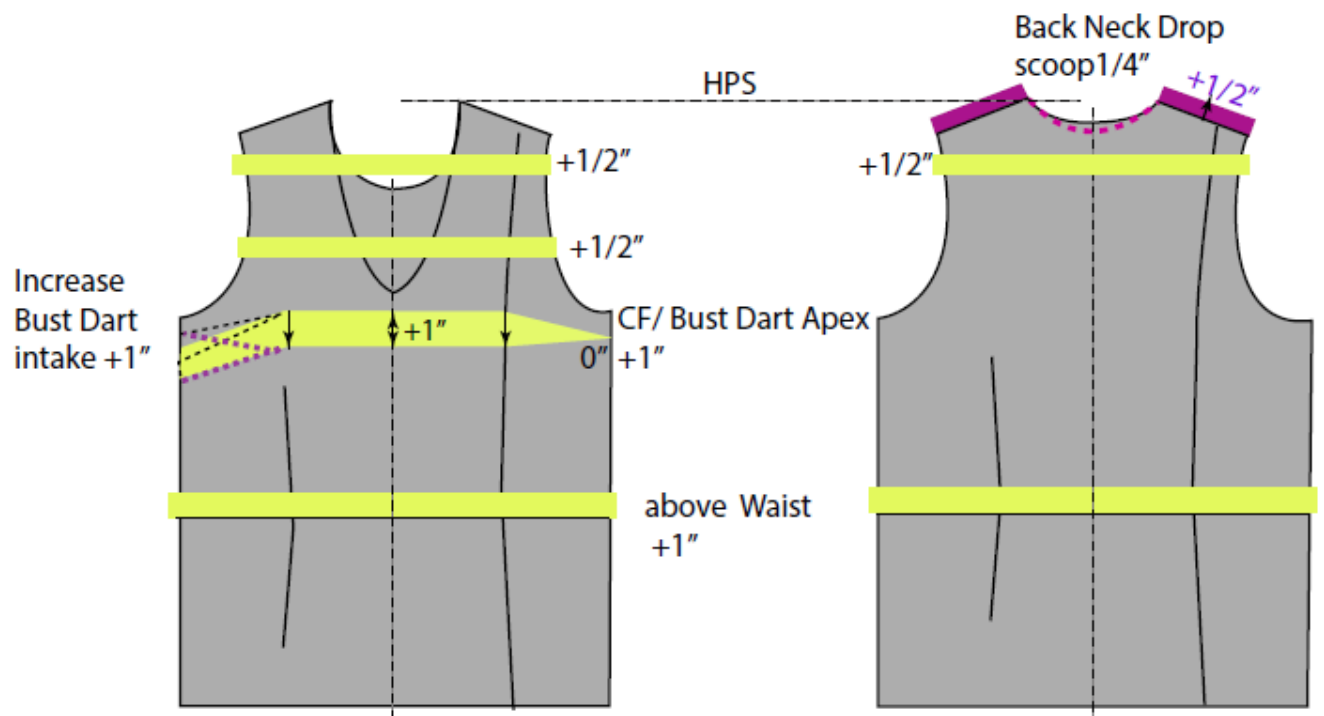
NECK WIDTH@ HPS +1 1/8"
 X-SHOULDER +1 5/8"
 X-CHEST +1 1/2"
 X-BACK +2 1/4"
 CHEST +7"
 WAIST +7"
 SWEEP +7"
 WAIST DART FROM CF/CB +1/2"
 PRINCESS SEAM FROM CF/CB +1/2"

SLEEVE LENGTH TOTAL +1"
 SLEEVE WIDTH @ BICEP +3"
 SLEEVE WIDTH @ OPENING Long +1"



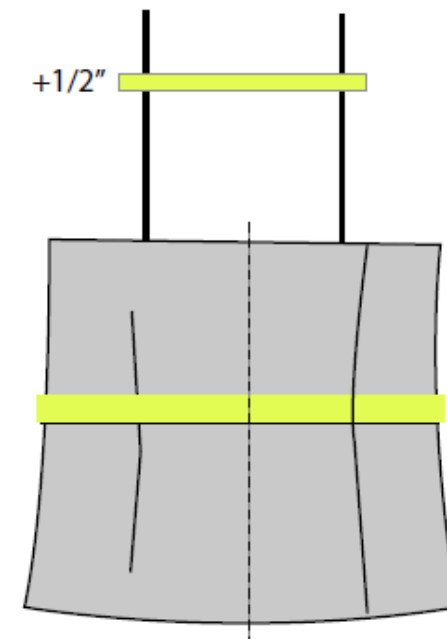
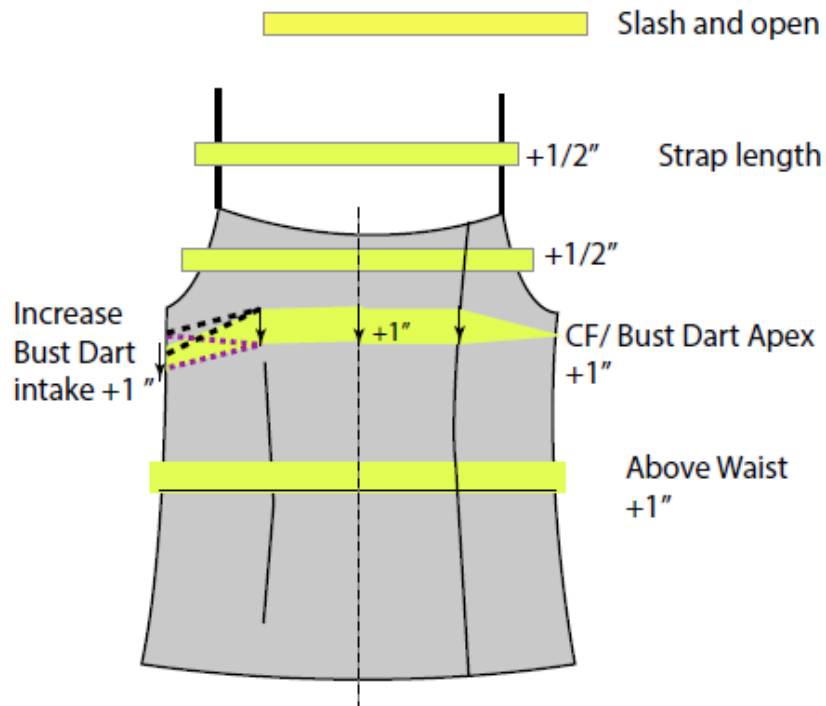
MISSY TO PLUS CONVERSION TOPS

Slash and open
 Add shaded area

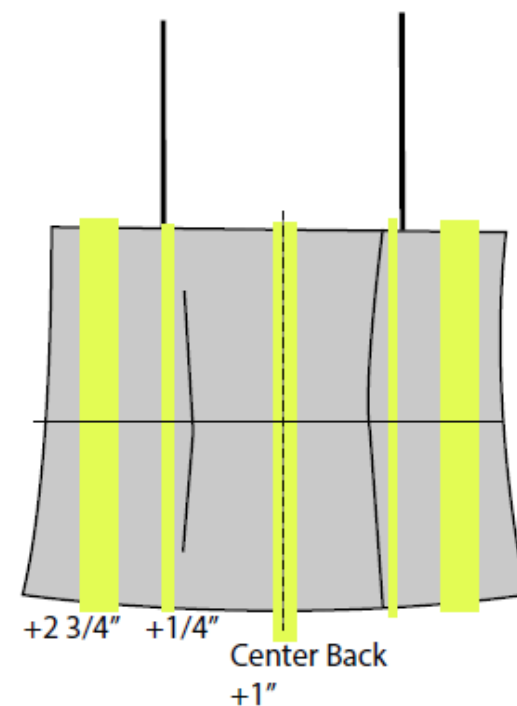
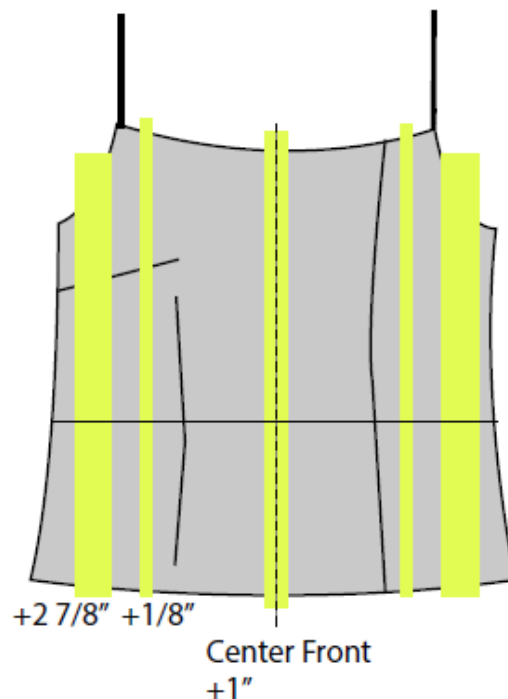


MISSY TO PLUS CONVERSION CAMI

STRAP LENGTH TOTAL	+1"
BUST DART APEX FROM TOP BODICE	+1/2"
BUST DART LEG @ SS FROM AH	0"
BUST DART LENGTH= 6 1/2"~ 7"	
CF WAIST PLACEMENT TOP BODICE	+2 1/2"
FRT BODY LENGTH FROM TOP BODICE	+2 1/2"
SIDE SEAM LENGTH FROM AH	+1"
CB WAIST PLACEMENT FROM Nk	+1"





FRONT STRAPS APART	+1 1/4"
BK STRAPS APART	+1 1/2"
CHEST	+7"
WAIST	+7"
SWEEP	+7"
PRINCESS SEAM FROM CF/CB	+1/2"

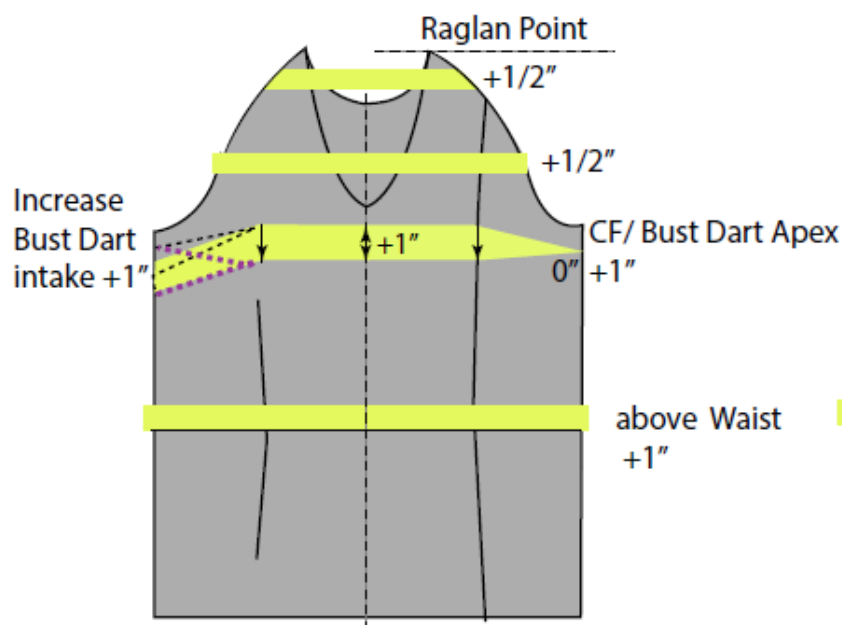


FRT NK DROP under 5"	+1/2"
FRT NK DROP under 10"	+1"
X-CHEST FROM Raglan Point	+1/2"
BUST DART APEX FROM Raglan Point	+2"
BUST DART LENGTH= 6 1/2"~ 7"	
WAIST DART LENGTH	+1"
CF WAIST PLACEMENT FROM Raglan point	+3"
FRT BODY LENGTH FROM Raglan point	+3"
SIDE SEAM LENGTH FROM AH	+1"
BK NK DROP from Raglan Point	+1/4"
X-BACK PLACEMENT from Raglan point	+1/2"
CB WAIST PLACEMENT FROM Raglan Point	+1 1/2"
FRONT RAGLAN SEAMS APART	+1"
BACK RAGLAN SEAMS APART	+1 1/4"
X-CHEST	+1 1/2"
X-BACK	+2 1/4"
CHEST	+7"
WAIST	+7"
SWEEP	+7"
WAIST DART FROM CF/CB	+1/2"
PRINCESS SEAM FROM CF/CB	+1/2"
SLEEVE LENGTH FROM NECK	+1 3/4"
SLEEVE WIDTH @ BICEP	+3"
SLEEVE WIDTH @ OPENING Long	+1"

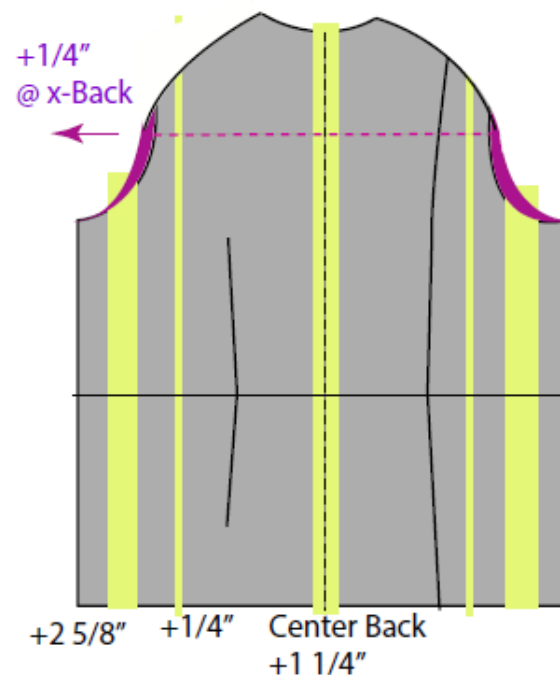
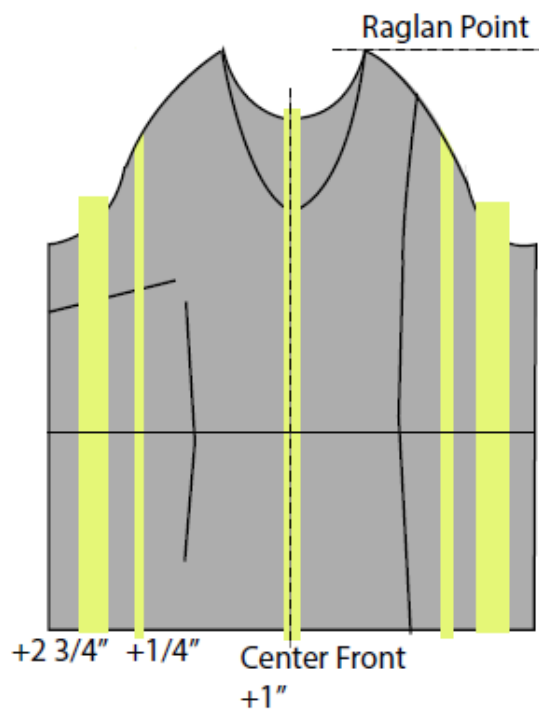
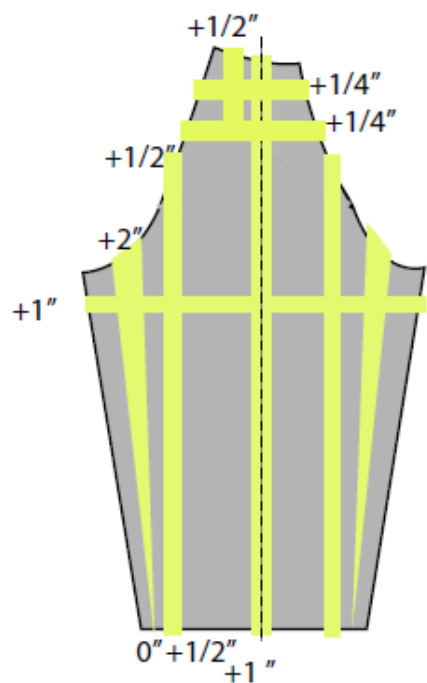
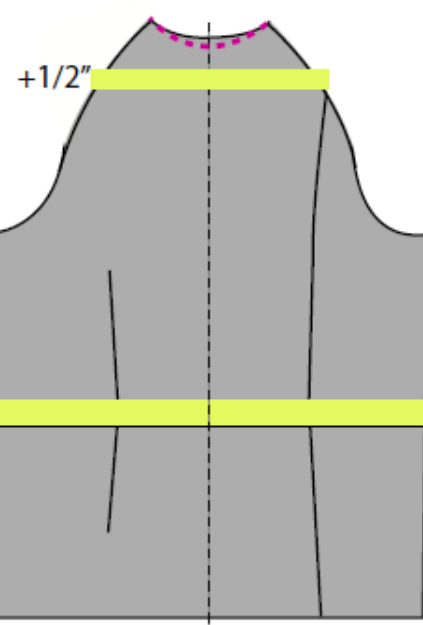
MISSY TO PLUS CONVERSION

Raglan Sleeve



 Slash and open
 Add shaded area

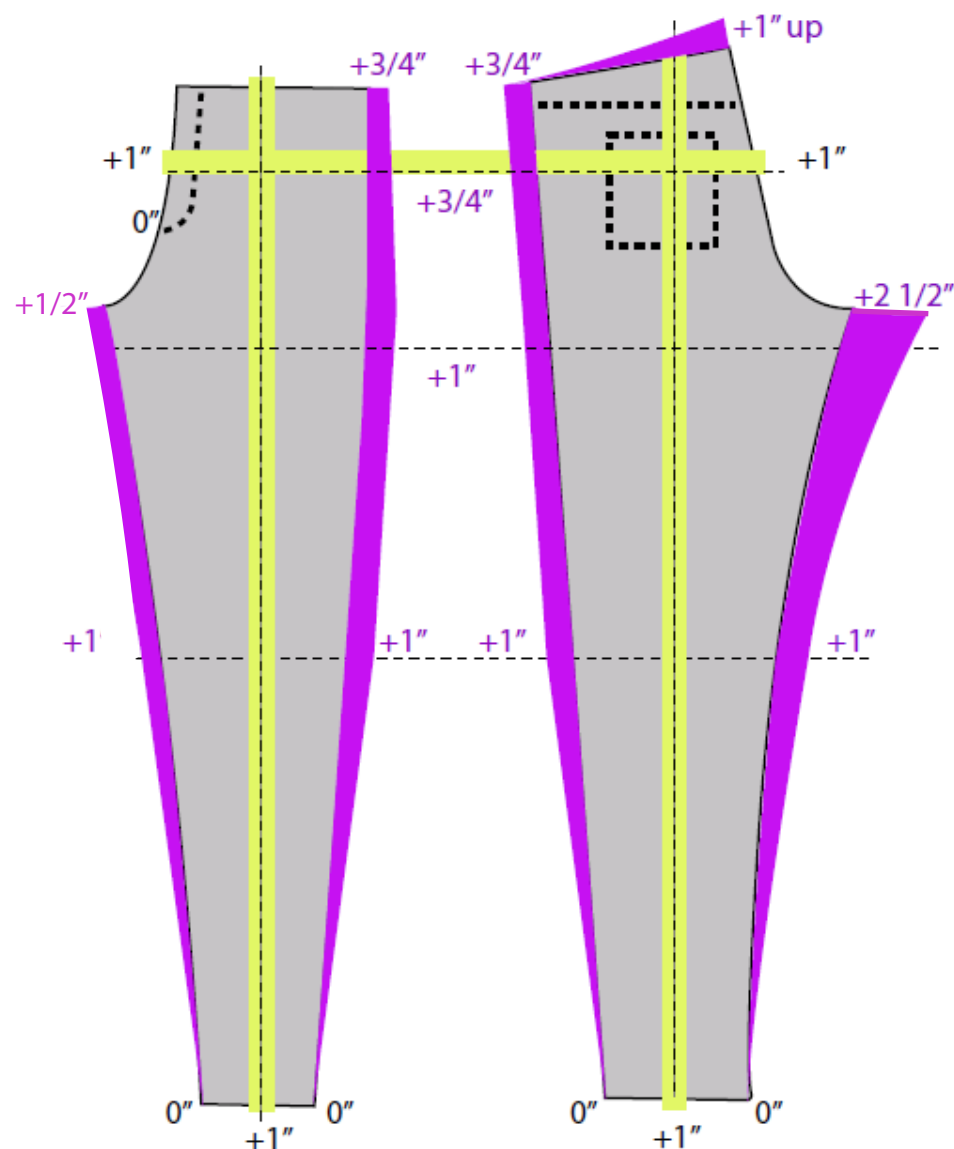


Back Neck Drop scoop 1/4"



MISSY TO PLUS CONVERSION PANT

 Slash and open
 Add shaded area



****FOR PLUS**** CF Waist Level Drop from CB Spec: 1 1/2"

Rigid WB Top & Bottom +6"

Waist - Relaxed +6"

Waist - Extended +7"

Low Hip Placement +1"

Low Hip +7"

Front Rise +1 1/2"

Back Rise +4 1/2"

****FOR PLUS**** Saddle Width @ 2" above Crotch Point (see image)

Thigh @ 1" Below Crotch Point +4 1/2"

Knee @ 11" Below Crotch Point +3"

Leg Opening (narrow) +1"

Leg Opening (bootcut) +1 1/2"

Leg Opening (Flare or Large Leg Opening) +3"

Zipper Length +1"

Fly Length from Top Waist +1"

Back Pocket from Bottom WB @ CB Side same

Back Pocket from CB@Top Spec: 2 1/4"

Back Pocket Width @ Top +1"

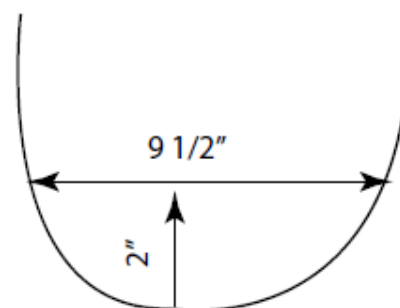
Back Pocket Width @ Bottom +1"

Back Pocket Height @ Center +1"



Inseam Length -1"

Patch Pocket from Waist +1"

Back Dart from CB @ WB bttm +3/4"



MISSY TO PLUS CONVERSION DRESS

 Slash and open
 Add shaded area

