



# Vendor Clo/3D Checklist And Quick Reference Guide

Companion to URBN VQS Guidelines

URBN - Production & Sourcing Dept.  
January 2024

# Table of Contents

Checklist for Vendor sending clo style to URBN -----3

Checklist for Vendor receiving clo style from URBN -----4

URBN Shared Clo assets -----5

Women’s base size form, avatar, and fit model measurements -----6

Women’s Fit Avatar -----7

Measuring Tapes on Women’s Avatar -----8

Men’s base size form, avatar, and fit model measurements -----9

Size Sets -----10

Engineered print layouts -----11

URBN Contacts-----12

# Checklist: Must include in sending clo style for Tech Review:

## What must be sent to Tech:

## How to send it to Tech/Where to find it

- |  |  |
|--|--|
| <input type="checkbox"/> Clo-Set Link for the Clo file -----   | Email Link to tech when style is complete<br>Upload file in your designated Vendor Room in URBN Clo-Set  |
| <input type="checkbox"/> Style must be on URBN Fit Avatar-----   | Send on Avatar in appropriate pose for style type - avatar & poses<br>find in Company Library  |
| <input type="checkbox"/> Style must sit on Avatar in proper placement-----   | See tech set up for garment placement – find set up in Bamboo Rose   |
| <input type="checkbox"/> Follow URBN CLO standards for style presentation-----   | See our <b>V</b> isual <b>Q</b> uality <b>S</b> tandards Guide   |
| <input type="checkbox"/> Front/Side/Back Image -----   | Send via email along with clo link in jpeg or png file format  |
| <input type="checkbox"/> Screen Shot of Pattern -----  | Send via email. Can be screen shot from Clo 2D window or from<br>the print layout mode.  |
| <input type="checkbox"/> Main (2D) Pattern Measurements -----<br>Main (3D) virtual garment width measurements for high stretch styles -- | Type in comment section in clo-set<br>Type in comment section in clo-set   |
| <input type="checkbox"/> Yardage Yield (YY) -----  | Send tech info in email or send them a screen shot of the marker layout which can also<br>count as the pattern image. Prefer marker layout be sent for engineered prints |

# Checklist: URBN in house developed styles through Clo: Factory will Receive

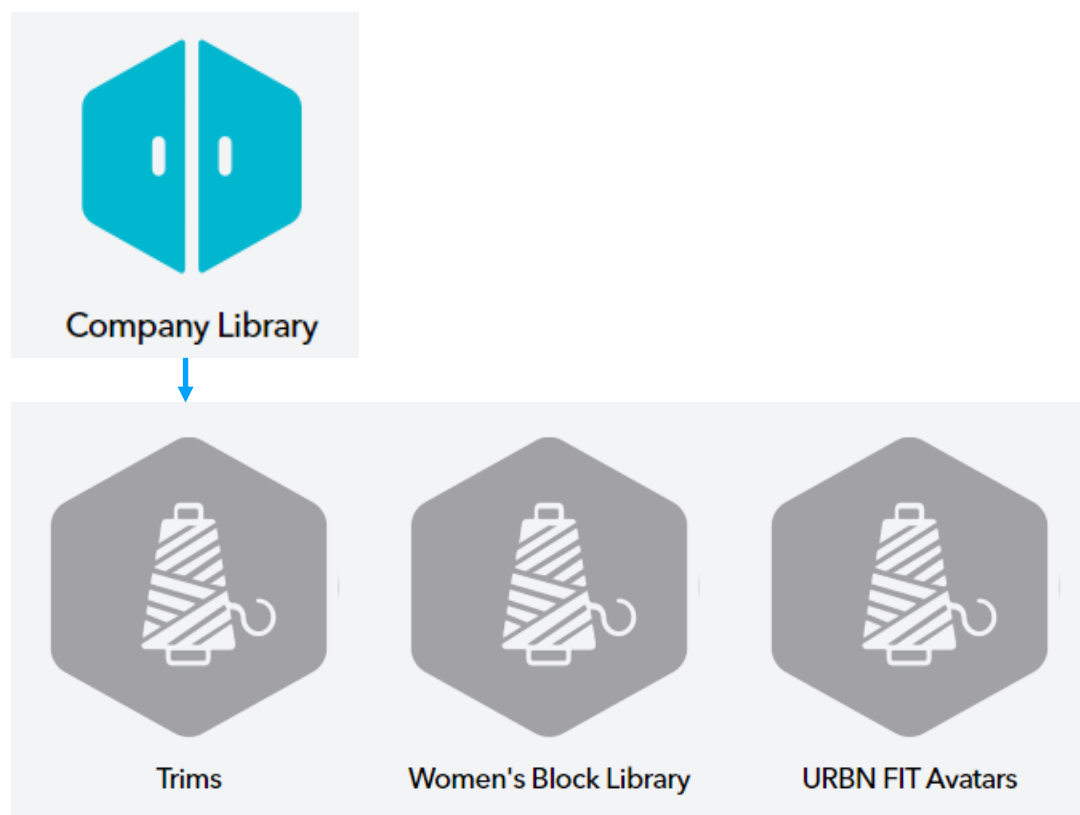
- ☐ Clo link or DXF pattern exported from Clo
- ☐ Front/Side/Back Image from Clo or Design Sketch
- ★ ☐ Screen shot of pattern - note Clo file/DXF patterns from clo may not include all pieces needed  
Factory will be responsible to complete pattern for sampling/production
- ☐ Tech Set-Up with basic specs and/or pattern measurements and construction information
- ☐ Print file as TIFF or JPEG from design, see bamboo rose for print placement

★ Please use image of pattern to double check pattern shapes and grainlines are correct.  
We have found when importing/exporting patterns from different software that grainlines can change.  
We need factory help to check grainlines are correct

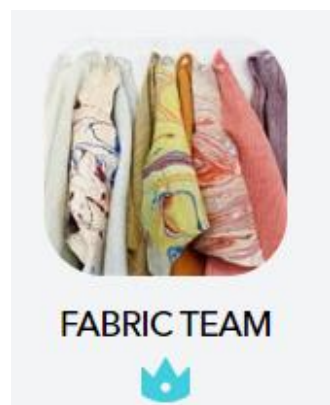
# URBN Shared Clo Assets

Provide Clo user's email address to allow access to URBN's shared files - We prefer only one email if your user group is able to share the login

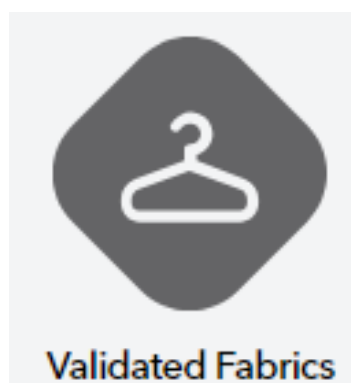
To Find Assets: go to the Company Library <https://style.clo-set.com/room/27249>



To Find URBN Tested Fabrics <https://style.clo-set.com/brand/11303>



We have added a new room to our Fabric Library. Validated fabrics have been re-tested and Checked for proper drape. Validated Fabrics are indicated by a green bar



In the event two files pop up in your search choose the one with the green bar. We are working to eliminate the old files.

# URBN Women's base size

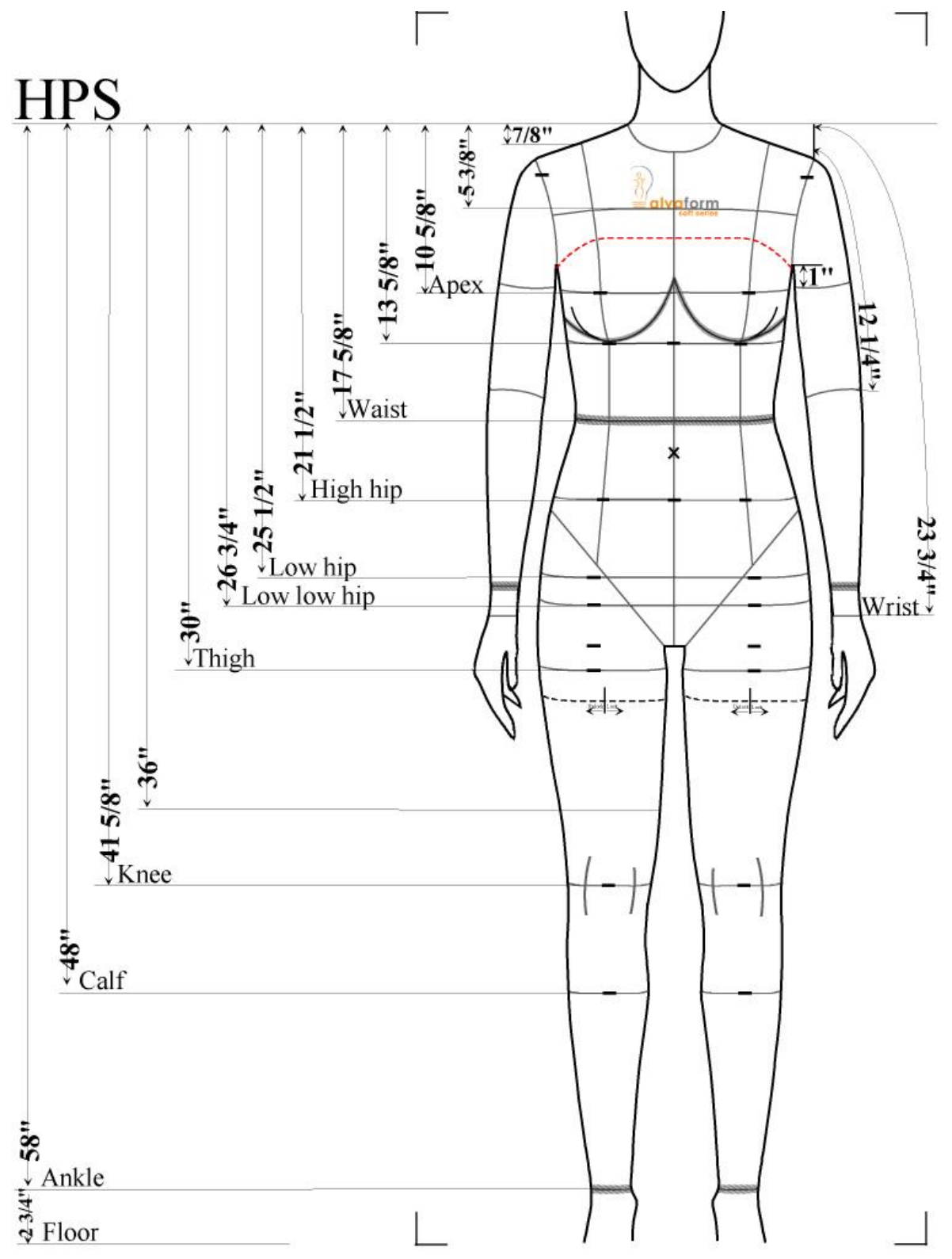
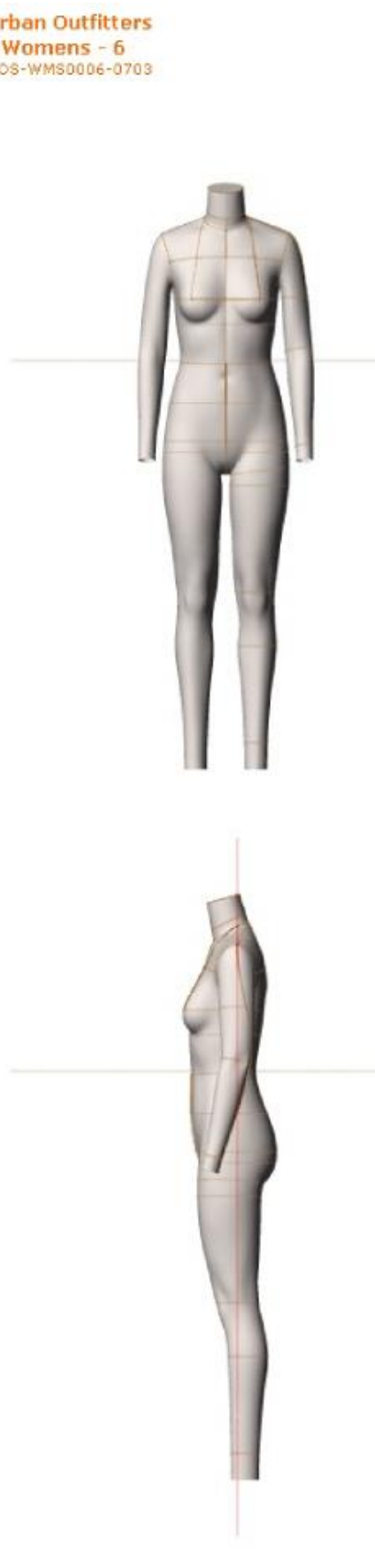
## Form, Avatar, & Fit Model Measurements:

Urban Outfitters: size 6, size Medium  
Anthropologie: size 6, size Small  
Free People: size 6, size Small



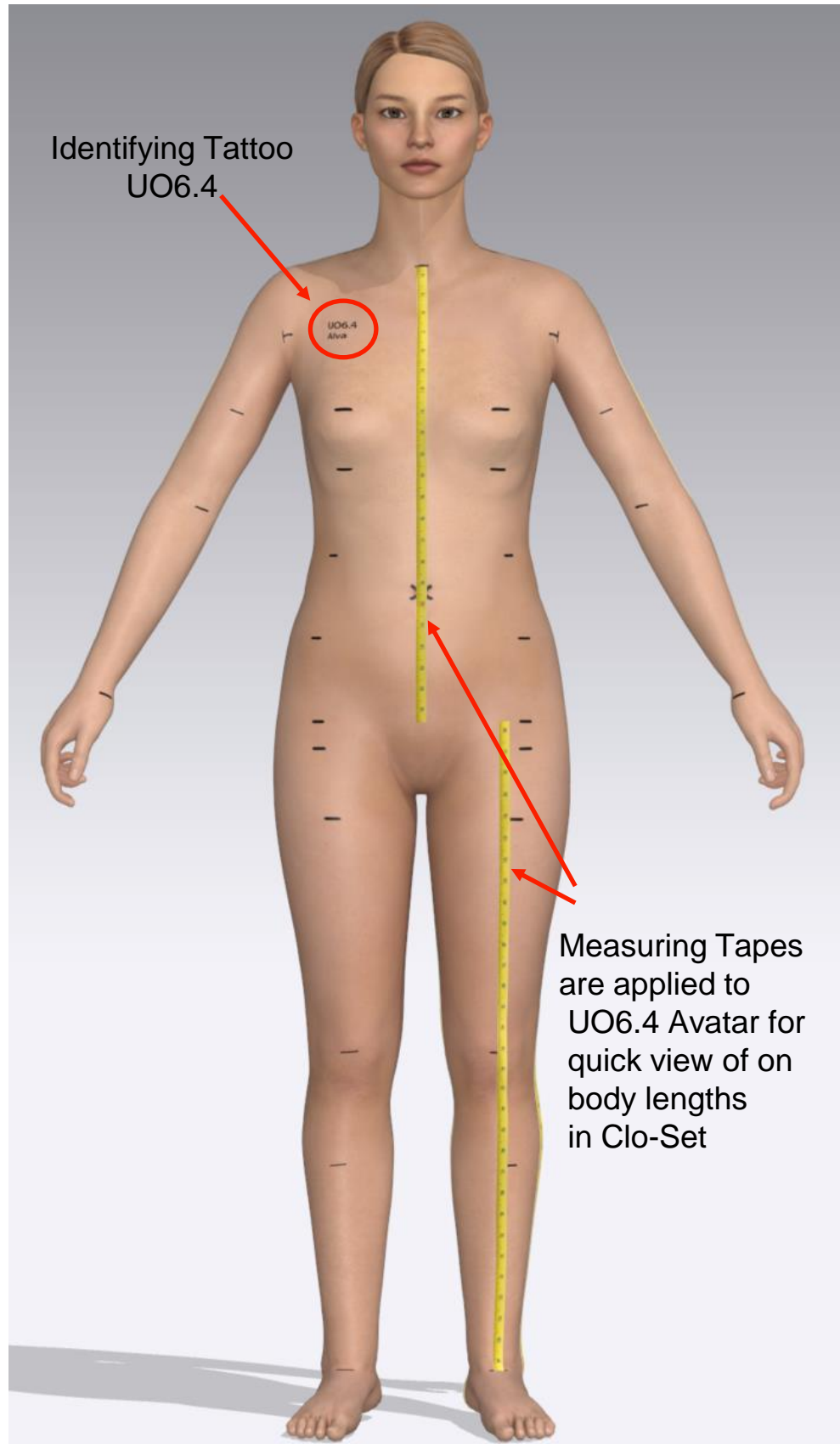
Urban Outfitters  
- Womens - 6  
UOS-WMS0006-0703  
03-Apr-08-PF  
E. Pajic

Standard Measurements	Client	Alva
Neck Base	14 1/4	✓
Across Shoulder	15 1/2	✓
Shoulder Drop	1 7/8	✓
Across Front	13	✓
CFneck To Across Front	3	✓
Across Back	14 1/4	✓
CBneck To Across Back	5 3/8	✓
Chest	-	-
-Chest Height	-	-
Under Pecs	-	-
Bust	36	✓
-Bust Height	48 1/2	✓
Under Bust	31 1/2	✓
-Under Bust Height	45 7/8	✓
Apex To Apex	7 3/4	✓
Halter	27 1/4	✓
HPSto Apex	10 7/8	✓
Waist	28	✓
-Waist Height	42 1/8	✓
CFneck To Waist	14 1/4	✓
CBneck To Waist	15 7/8	✓
High Hip	34 1/2	✓
-High Hip Height	37 3/4	✓
Waist To High Hip	4	✓
Low Hip	38	✓
-Low Hip Height	33 7/8	✓
Waist To Low Hip	8	✓
Inseam	30 3/8	✓
Total Rise	27 3/4	✓
Thigh	22	✓
-Thigh Height	29 1/4	✓
Knee	14 1/4	✓
-Knee Height	18 1/4	✓
Calf	13 3/4	✓
-Calf Height	12 3/4	✓
Ankle	9 1/4	✓
-Ankle Height	2 3/4	✓
Armhole	16	✓
CBneck To Wrist	31	✓
Arm Length	23 1/4	✓
Bicep	11	✓
Elbow	9 7/8	✓
Wrist	6 1/8	✓
Vertical Trunk	-	-
Arm Extension	1 1/2	✓
Extra Measurements	Client	Alva
Total Height	65 3/4	✓
-CBNHeight	57 5/8	✓
Shoulder Length	5 3/8	✓
Mid Neck	13 1/4	✓
CFneck To Mid Neck	1 1/8	✓
CBneck To Mid Neck	0 7/8	✓
-CFwaist Height	41 3/4	✓
-CBwaist Height	42 1/4	✓
Waist To Low Low	9 1/4	✓
Thigh Crease	22 3/8	✓



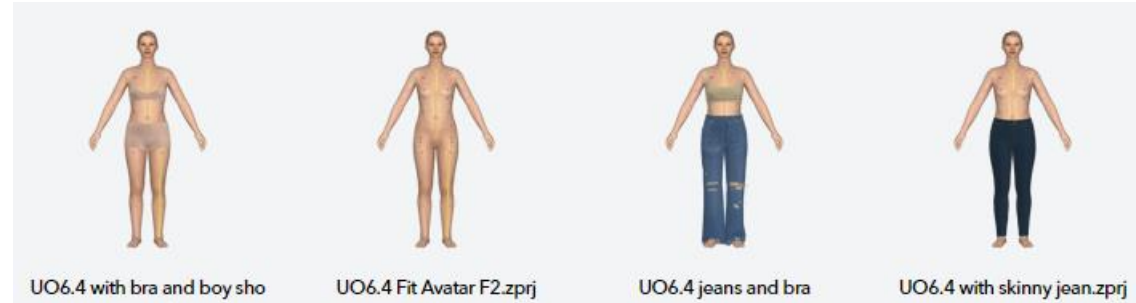


# URBN Women's Fit Avatar:

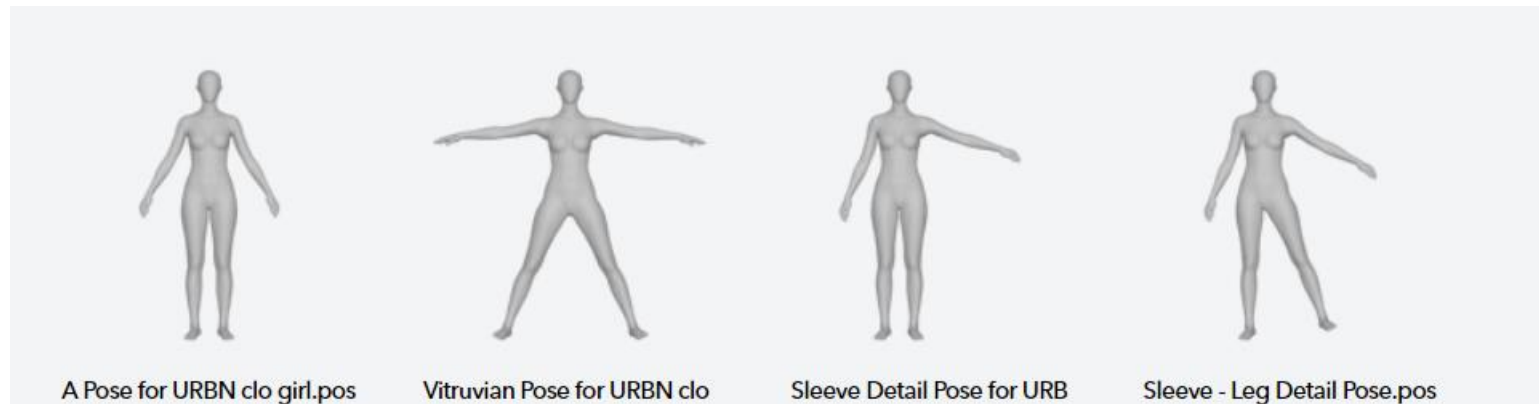


Female base size avatar: Must have tattoo UO6.4  
options available with bra top or bottom in URBN Company Library:

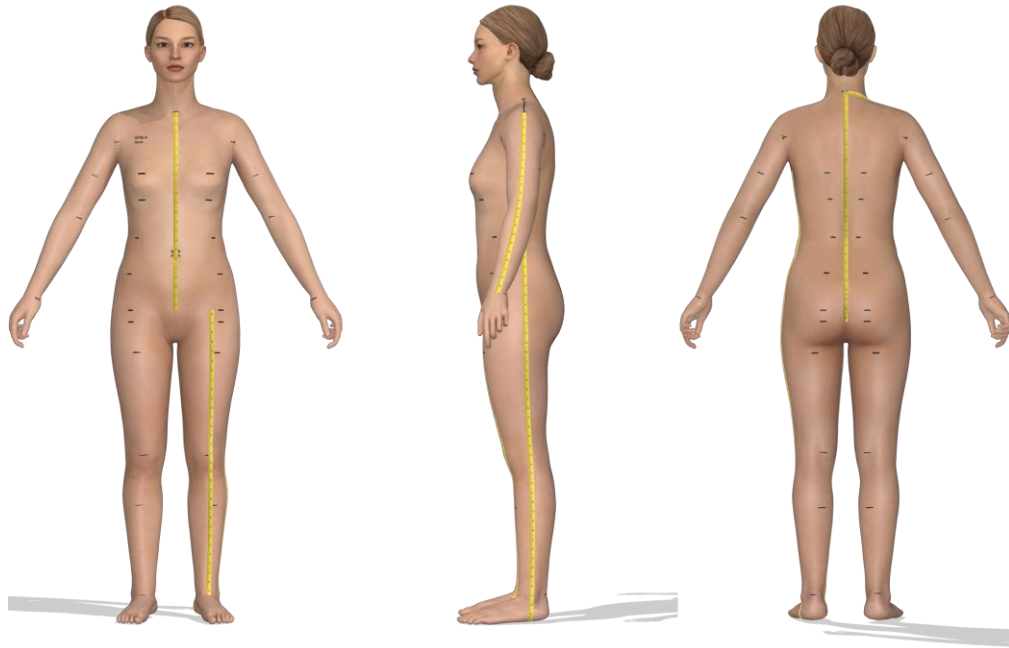
<https://style.clo-set.com/room/834568>



Tech may request special pose for certain garment types.  
Poses available in URBN Company Library: <https://style.clo-set.com/room/834566>



# Measuring Tape on URBN Clo Avatar



Measuring tapes are for quick visual in clo-set for on body lengths

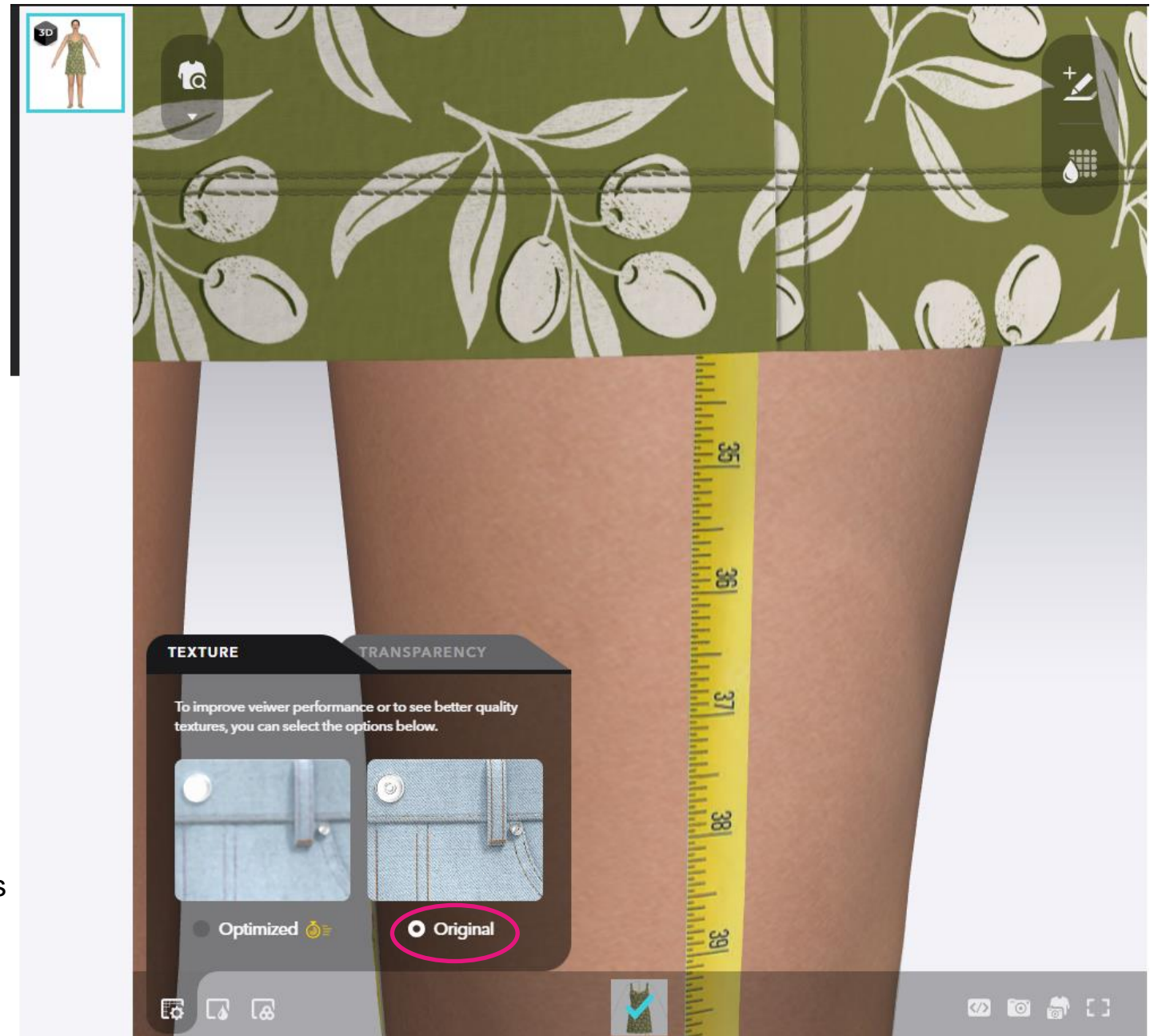
All Tapes (except inseam tape) are set from  
HPS (shoulder @ neck)  
ex. Tape at CF starts at 3 ½"

Tapes on leg are from HPS except the inseam tape is for below  
crotch only

Tape on left arm starts from shoulder (x-shoulder marked as 15 ½")  
Tape on right arm starts at CB neck

Tapes match tick marks and placement of our In-office Alvanon Forms

To correct blurry looking tapes in Clo-Set  
select quality preferences – change to Original

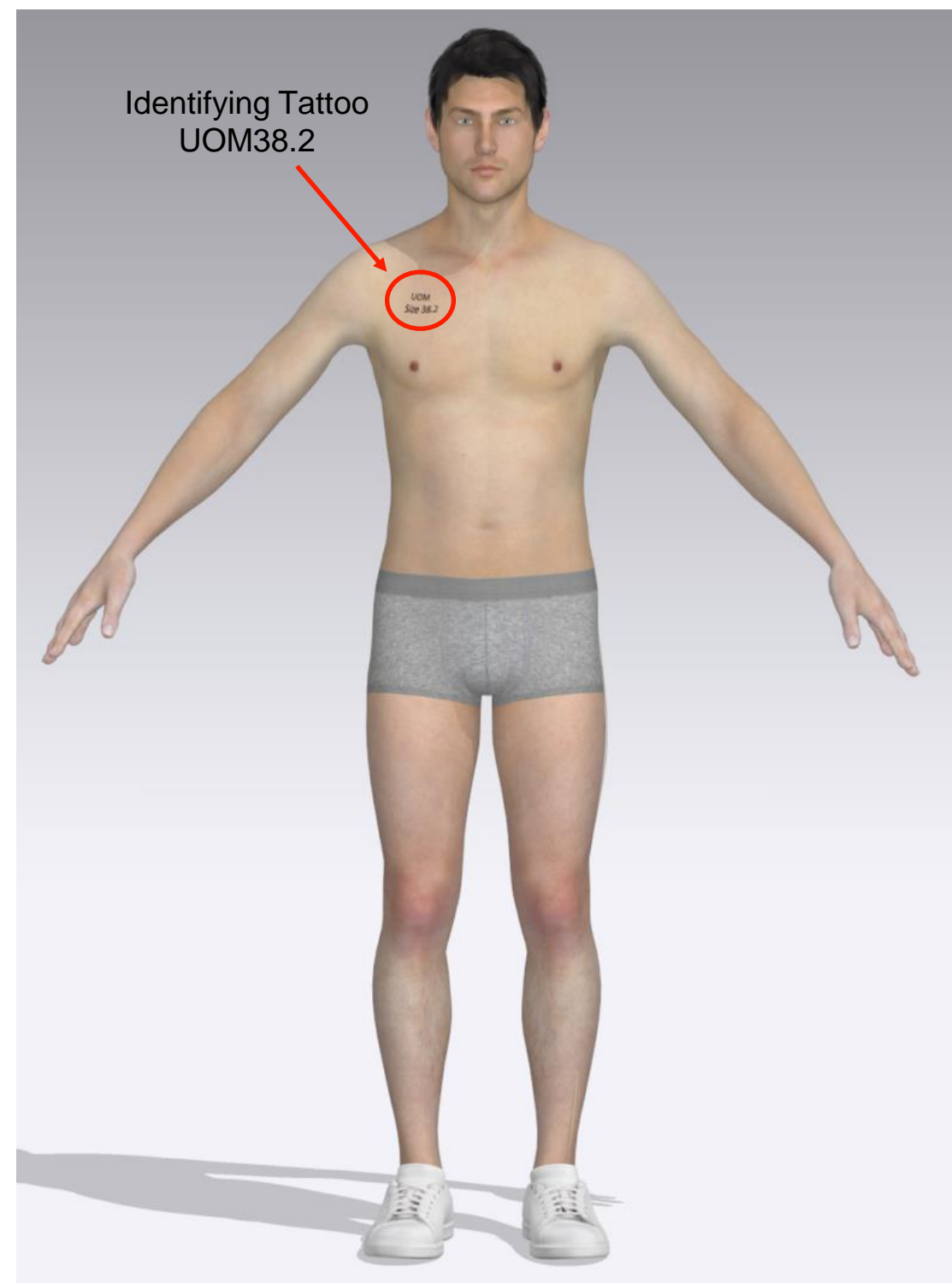
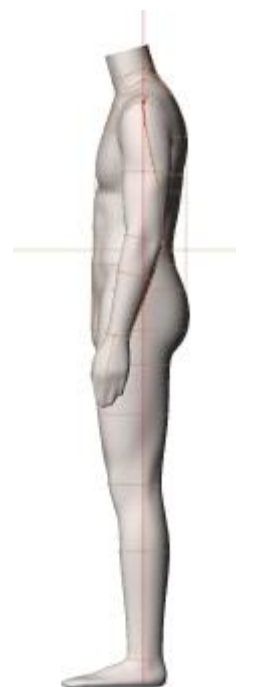




# URBN Men's base size Form, Avatar, & Fit Model Measurements:.

<b>alva FORM</b> <b>Urban Outfitters</b> <b>- Mens - 38</b> <b>UOS-MMN038S-1109</b> <b>09-May-12</b> <b>Elena</b>		
Standard Measurements	Client	Alva
Neck Base	16 1/8	✓
Across Shoulder	17 3/4	✓
Shoulder Drop	2 1/4	✓
Across Front	15 1/8	✓
CFneck To Across Front	3 1/2	✓
Across Back	16 5/8	✓
CBneck To Across Back	7	✓
Chest	38 1/2	✓
-Chest Height	51 1/4	✓
Under Pecs	35	✓
Bust	-	-
-Bust Height	-	-
Under Bust	-	-
-Under Bust Height	-	-
Apex To Apex	-	-
Halter	-	-
HPSto Apex	-	-
Waist	32	✓
-Waist Height	43 3/4	✓
CFneck To Waist	15 7/8	✓
CBneck To Waist	18 3/8	✓
High Hip	36	✓
-High Hip Height	39 3/4	✓
Waist To High Hip	4	✓
Low Hip	38	✓
-Low Hip Height	35 3/4	✓
Waist To Low Hip	8	✓
Inseam	33 1/4	✓
Total Rise	27 1/8	✓
Thigh	22	✓
-Thigh Height	32 1/4	✓
Knee	15 1/4	✓
-Knee Height	20 1/4	✓
Calf	15	✓
-Calf Height	13 5/8	✓
Ankle	10 1/2	✓
-Ankle Height	2 3/4	✓
Armhole	18 1/2	✓
CBneck To Wrist	33 7/8	✓
Arm Length	25 1/8	✓
Bicep	12 3/4	✓
Elbow	12	✓
Wrist	7	✓
Vertical Trunk	65 5/8	✓
Arm Extension	-	-
Extra Measurements	Client	Alva
Total Height	71	✓
Mid Neck	15 1/8	✓
Forearm	11	✓
Pants Waist	33 1/2	✓
Waist To Pants Waist Front	1 1/2	✓
CFneck To Mid Neck	1 1/4	✓
CBneck To Mid Neck	1	✓
Hand Length	7 5/8	✓
Hand Width	4	✓
Foot Length	10 1/2	✓
Foot Width	4	✓

Urban Outfitters  
- Mens - 38  
UOS-MMN038S-1109



# Size Set Request

Use Clo's Avatar for Size Set Request: Apply provided ASTM sizing per below Chart

	US ASTM missy straight size range									
US_ASTM Avatar Sizing	2	4	6	8	10	12	14	16	18	20
Bust (US ASTM Avatar)	33	34 1/8	35 1/4	36 1/4	36 1/4	38 3/4	40 3/8	42 1/8	44	46
waist (US ASTM Avatar)	26 7/8	27 5/8	28 1/2	29 1/2	30 1/2	32 1/4	34	36	38 1/4	40 1/2
hip (US ASTM Avatar)	35 1/8	36 3/8	37 1/2	38 1/2	39 1/2	41	42 1/2	44 1/4	46	48
bicep (US ASTM Avatar)	10 1/4	10 1/2	10 3/4	11 1/8	11 1/8	11 3/4	12 1/8	12 1/2	13	13 5/8
thigh (US ASTM Avatar)	20 7/8	21 1/4	29 3/8	29 3/8	22 3/4	23 5/8	24 1/2	25 3/4	27	28 1/4
URBN Numeric Size	0	2	4	6	8	10	12	14	16	18
URBN Alpha Size	XS		S		M		L		XL	XXL
URBN Waist Size	26	27	28	29	30	32	34	36	38	40

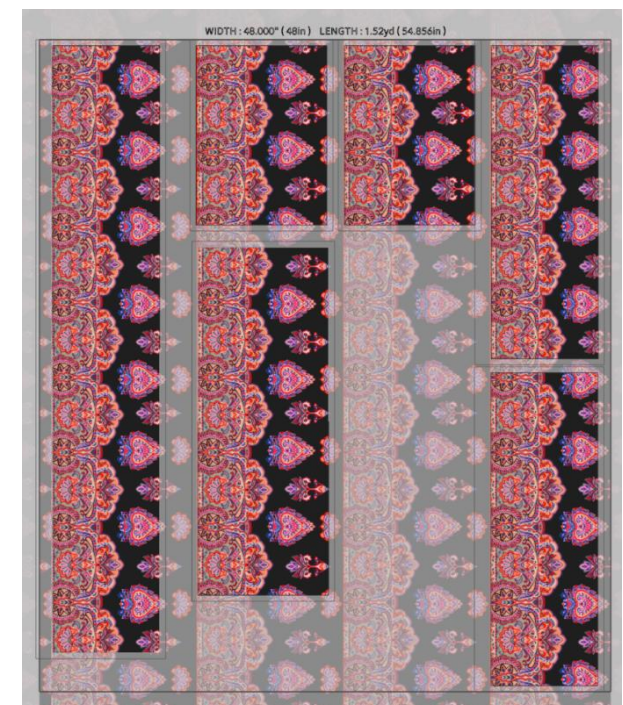
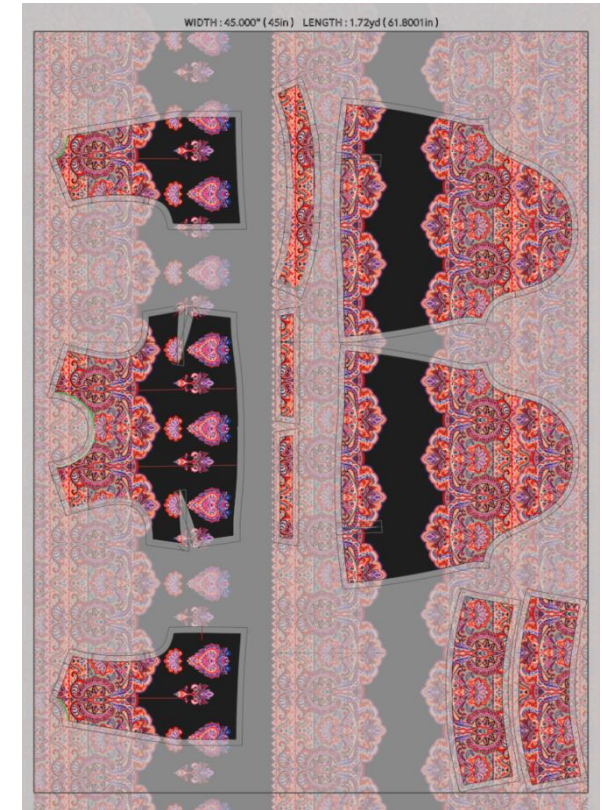
Send size range images as below example (most common request will be for Graphic Tees)





# Engineered Prints

Send Engineered Printed Styles with front, side back view on Avatar + Print layout for reference



# Thanks!

Please reach out to the URBN 3D Team for questions, help, and advise on all DPC product development solutions:

Paige Regan – Sr. Lead 3D Tech Anthropologie: [kregan@urbn.com](mailto:kregan@urbn.com)

Heidi Cheng –Sr. Lead 3D Tech Free People: [hcheng@urbn.com](mailto:hcheng@urbn.com)

Wei Peng – Associate Manger of DPC: Clo Technical issues, AI, Apex, + all related programs, special projects : [wpeng@urbn.com](mailto:wpeng@urbn.com)

Sugu Tomar – DPC specialist: Vendor training: Clo & AI, + all related programs, special projects

Lynda Lovell – 3D Technical Design Manager: 3D for Urban Outfitters, 3D Process and Resources: [llovell@urbn.com](mailto:llovell@urbn.com)