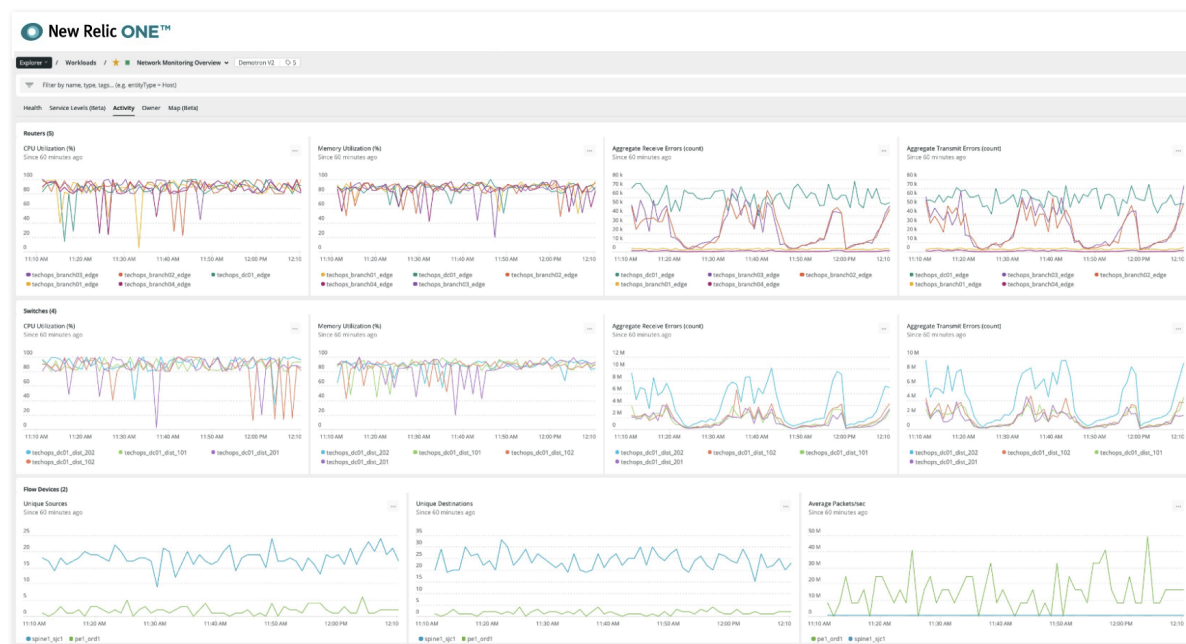


## Kentik brings network observability to New Relic

The app is broken . . . is it the network? The infrastructure? The code? When an application is suddenly not reachable and/or not performing, the troubleshooting teams responsible for fixing it (ITOps, DevOps, NetOps, CloudOps, SREs) have been challenged with determining this answer. In the best case, figuring out where to troubleshoot takes too long. In the worst case, the different teams involved add finger pointing and blame to the problem — with an extra side of cranky when this happens at 2am.

This challenge is solved by adding Kentik's network observability data to New Relic's application experience telemetry right inside the New Relic One observability platform. Teams are united at shared dashboards and data sets where they can see their critical network data right alongside their application and infrastructure data.



Kentik Network Performance Monitoring as dashboards inside New Relic One

## Key benefits

Reduce mean time to repair (MTTR) by quickly “ruling in or ruling out” the network

Proactively recognize/diagnose application performance issues across hybrid infrastructure before they impact users

Understand and analyze how network performance impacts the entire stack

## Key capabilities

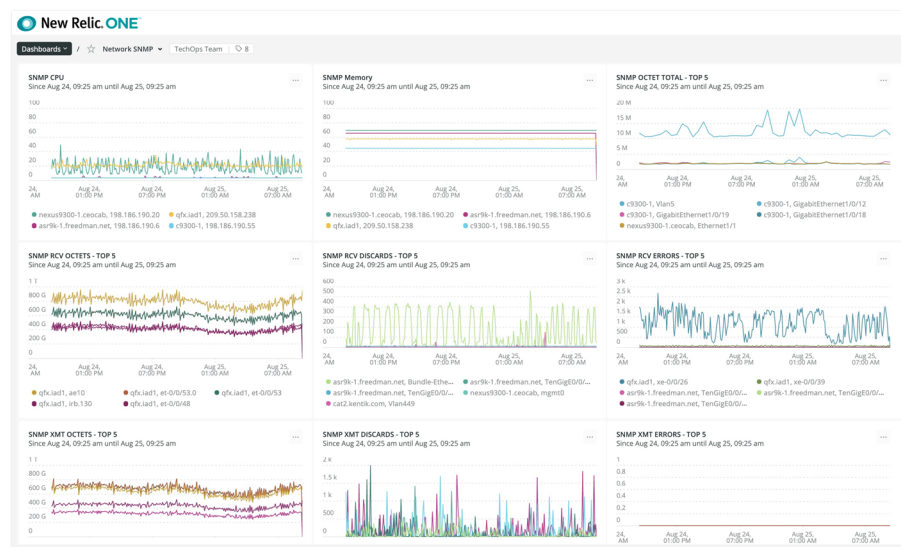
New Relic One ingests Kentik streaming network telemetry (IPFIX, sFlow, NetFlow, and more) from a broad range of sources

Kentik's network telemetry is synthesized with the capabilities of New Relic One, including alerts, dashboards, and anomaly detection

Combining results from both network and app synthetic testing provides an early warning of performance degradation before users are impacted

## Observability to reduce MTTR

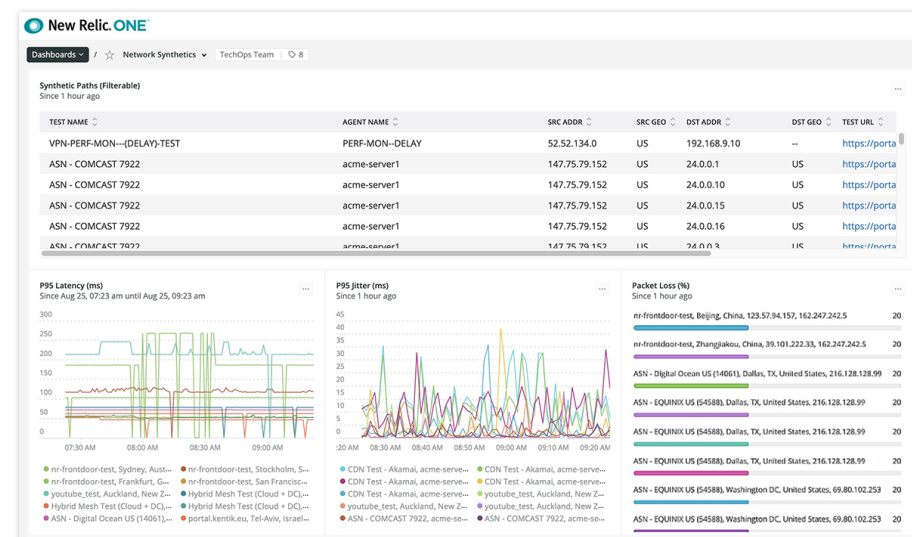
Is it the network, the application, or something else? Guessing what's behind a performance or outage issue takes time. A lack of network context with application and infrastructure performance data is a blind spot that not only causes delays, but also adds unnecessary friction between NetOps and DevOps teams. By sending network data directly into the New Relic One platform, both teams have the same data they need, all in one place, to make fast troubleshooting decisions and reduce MTTR.



Kentik provides New Relic One with detailed network device metrics to understand network operational status.

## Synthetics to predict and prevent issues

Network synthetic testing from Kentik combined with New Relic's application synthetic testing helps predict application performance issues before users are affected. Ops teams can proactively diagnose and prevent these events before they have business impact. The powerful duo of network and application synthetic testing provides a complete view of availability and reachability.



Kentik actively tests network parameters and provides the metrics to New Relic One, giving ops teams unique insight into application performance.

**ABOUT KENTIK** | Kentik® is the network observability company. Our platform is a must-have for the network front line, whether digital business, corporate IT, or service provider. Network professionals turn to the Kentik Network Observability Cloud to plan, run, and fix any network, relying on our infinite granularity, AI-driven insights, and ridiculously fast search. Kentik makes sense of network, cloud, host, and container flow, internet routing, performance tests, and network metrics. We show network pros what they need to know about their network performance, health, and security to make their business-critical services shine. Networks power the world's most valuable companies, and those companies trust Kentik.

Revised 20210827