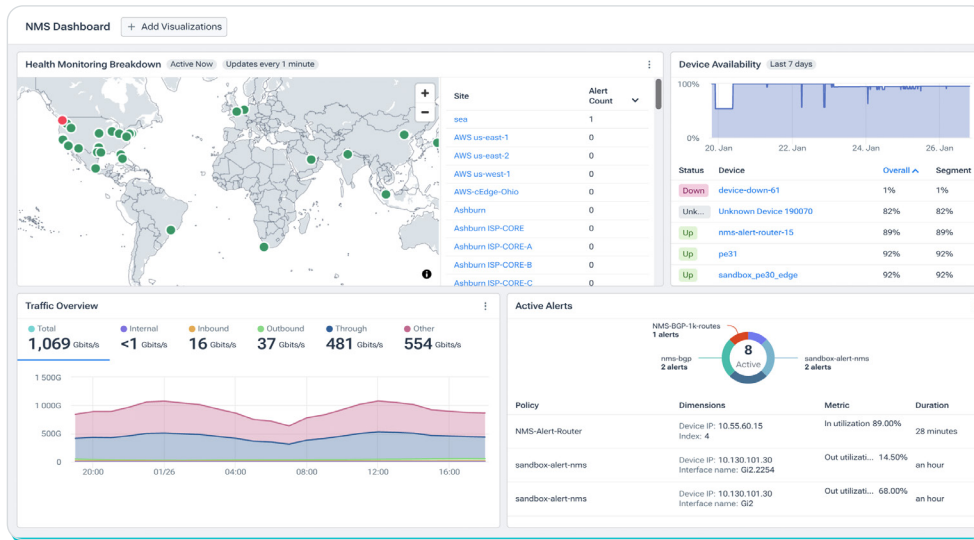


Kentik Network Monitoring System

The scale and complexity of the current network landscape demands efficient and flexible network observability. But network monitoring has been historically fraught with costly overhead and outdated systems not optimized for today's agile teams.

Kentik NMS is network monitoring for the modern network team. It's a no-maintenance SaaS that unifies device metrics, enriched flow telemetry, and AI-driven troubleshooting in one platform to make Kentik the single source of truth for network performance and reliability.

Built to handle the scale of the largest networks in the world, Kentik NMS combines traditional network monitoring system capabilities with modern network intelligence to provide a new and powerful solution simplifying the observability footprint for enterprises and service providers that rely on complex networks.



Key benefits

Unified flow and metrics

Enriched traffic analysis meets infrastructure metrics in the same view so you know what your devices are doing and why.

Modern, scalable SaaS

Always-on, infinitely scalable SaaS requires no hardware, upgrades, or maintenance.

AI-ready

Automatically analyze infrastructure metrics alongside flow, configs, synthetic tests, and live device data with AI Advisor, or extend Kentik NMS into any AI workflow via the Kentik MCP server.

Advanced monitoring

BGP prefix monitoring, automated config backups and diffs, and on-demand device diagnostics – all out-of-the-box, plus customizable metrics.

Unified collection and data model

Collect and normalize any metric from any device via SNMP and streaming telemetry (gNMI) in an OpenConfig-inspired data model for seamless alerting, dashboarding, and visibility.

✓ MODERN, SCALABLE SAAS PLATFORM

Experience a SaaS-native NMS built to scale without the operational burden of legacy stacks. Reduce server and collector sprawl, simplify upgrades, and lower total cost versus on-prem approaches.

✓ CENTRALIZED OBSERVABILITY

Combine device metrics, synthetic test, configurations, live device data, enriched flow, and more in one platform. Understand both *what* your network is doing and *why*.

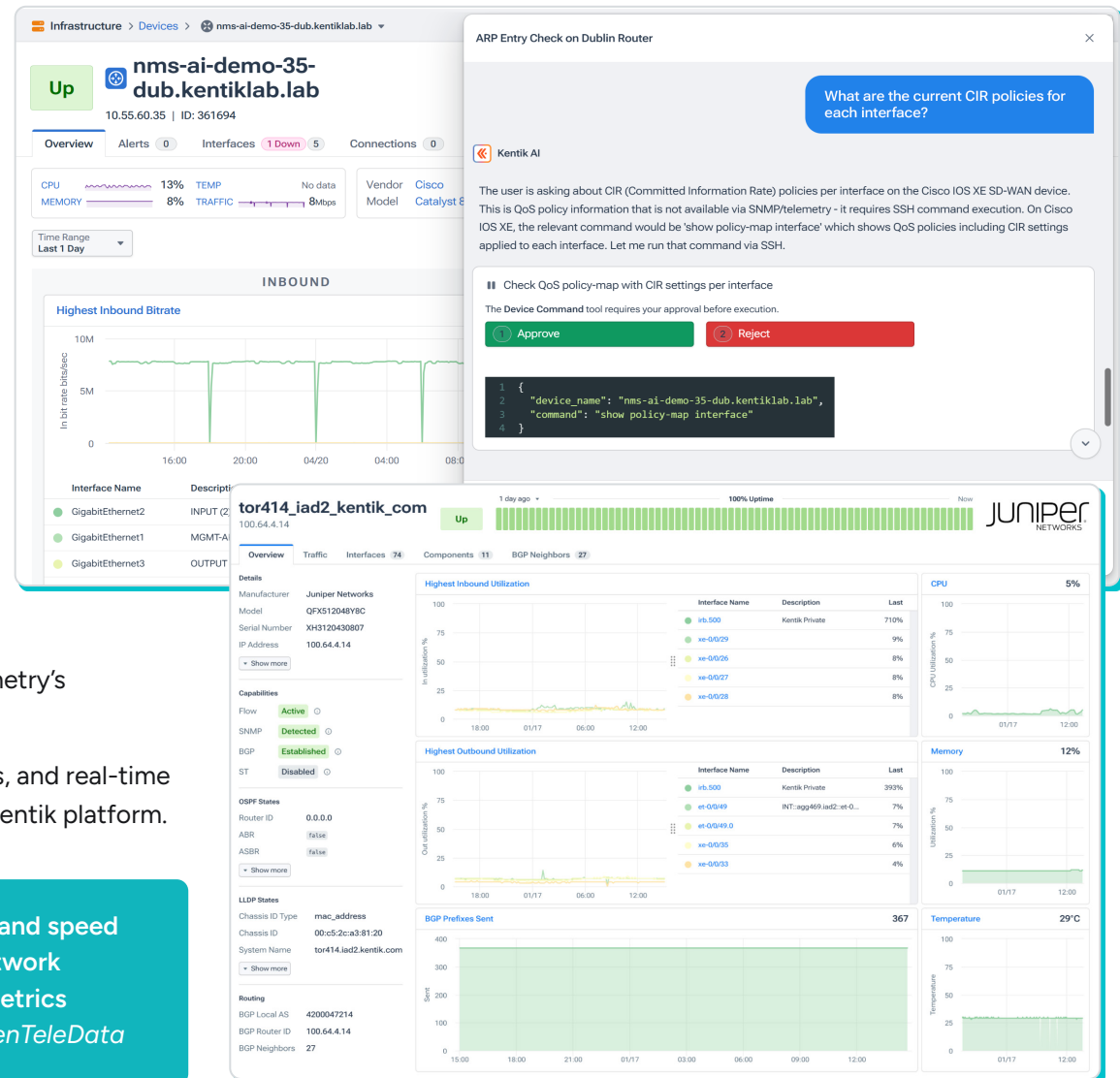
✓ AI-ASSISTED TROUBLESHOOTING

AI Advisor reasons across all your network telemetry including device metrics, flow, config history, and live device diagnostics in a single thread. Close the gap between detection and diagnosis faster without switching tools.

Use Kentik NMS to:

- ▶ **Simplify your network tooling** by combining traditional network monitoring and modern metrics observability in one tool.
- ▶ **Avoid hardware costs and administrative burden** by using our always-on, always-fast, SaaS web UI.
- ▶ **Correlate device health metrics** with enriched flow data to identify which application, path, or user is responsible for a performance issue.
- ▶ **Unlock the benefits of streaming telemetry** on your new hardware investments with seamlessly integrated SNMP for hardware that doesn't support streaming.
- ▶ **Get fresh, detailed data** with default one-minute intervals, as fast as one-second intervals for special use cases, and as slow as 10 minutes for legacy hardware.
- ▶ **Reduce strain on network infrastructure** with streaming telemetry's subscription-based data collection.
- ▶ **Accelerate root cause diagnosis** with config backups and diffs, and real-time device diagnostics executed by AI Advisor without leaving the Kentik platform.

"Kentik is helping us improve network operations efficiency and speed up MTR. We are reducing the total cost of ownership of network monitoring by consolidating advanced traffic analysis and metrics monitoring into one SaaS platform." – Brian Mengel, CTO, PenTeleData



Kentik is the network intelligence platform for modern infrastructure teams. Unlike traditional monitoring and observability tools, we demystify complex network operations, enabling organizations to deliver applications and innovation at scale.