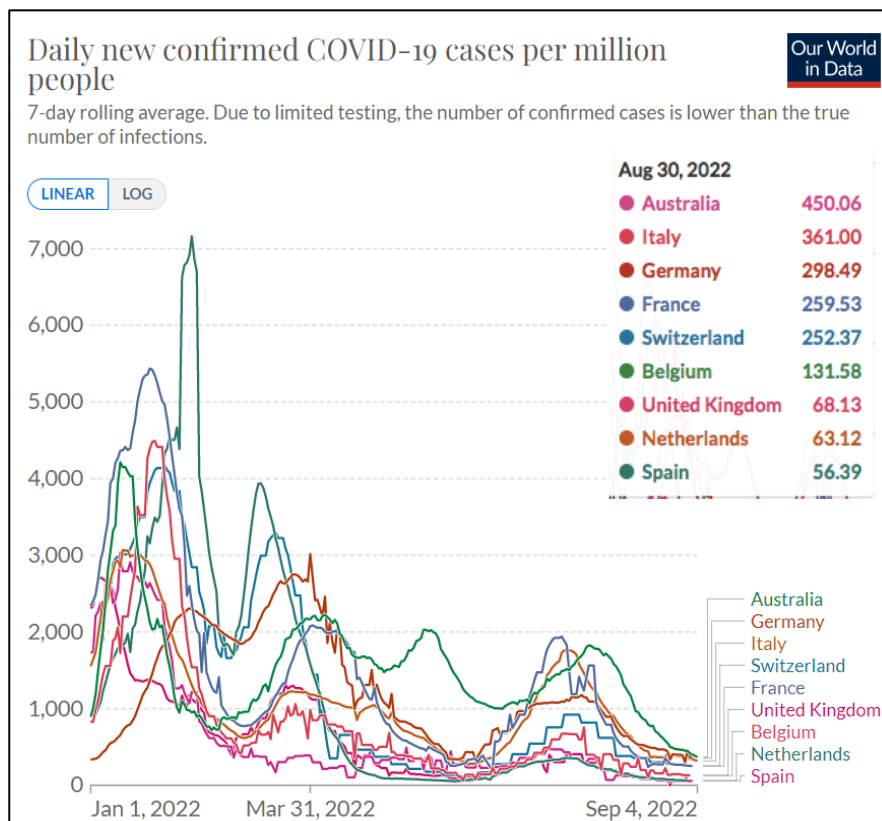


2022 UCI ROAD WORLD CHAMPIONSHIPS – WOLLONGONG (AUS) COVID-19 PROTOCOL

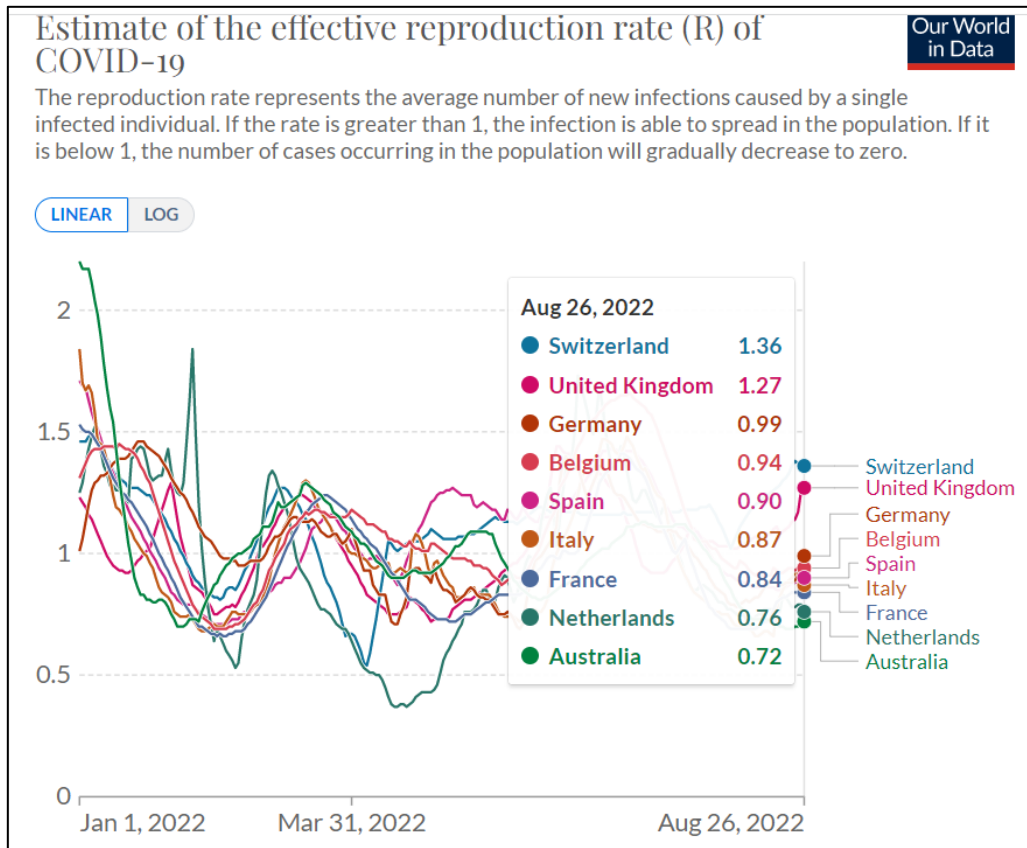
In order to organize the 2022 Road World Championships in the best possible safety conditions with regard to the COVID-19 pandemic, a specific protocol has been put in place to reduce the risks of contamination with the coronavirus. This protocol is in accordance with the rules for the organization of road racing competitions put in place by the UCI since June 2020, and revised in July 2022 (protocol available on the UCI website).

Status of the COVID-19 pandemic in New South Wales (NSW) and the Wollongong District.

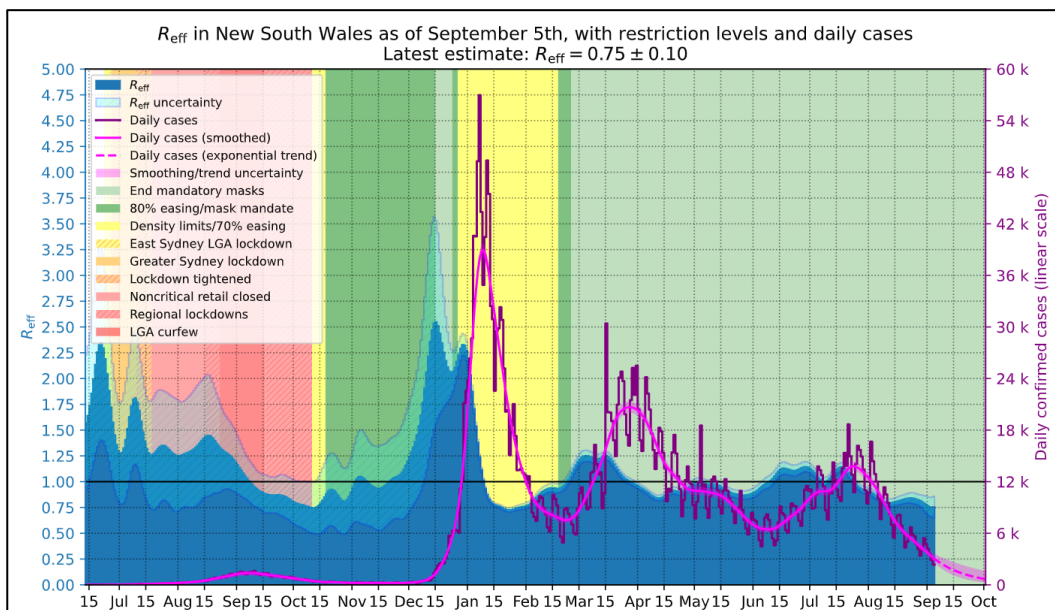
1) **The current epidemiological situation** in Australia is stable and favourable for the organization of international sporting events with the public. There is currently no detectable threat of a resurgence of the pandemic. For the country as a whole, the epidemiological indices classically used are good,
 - the incidence rate (number of daily new confirmed Covid cases) is 45 per 100,000 inhabitants (or 450 per million inhabitants) (see Figure below).



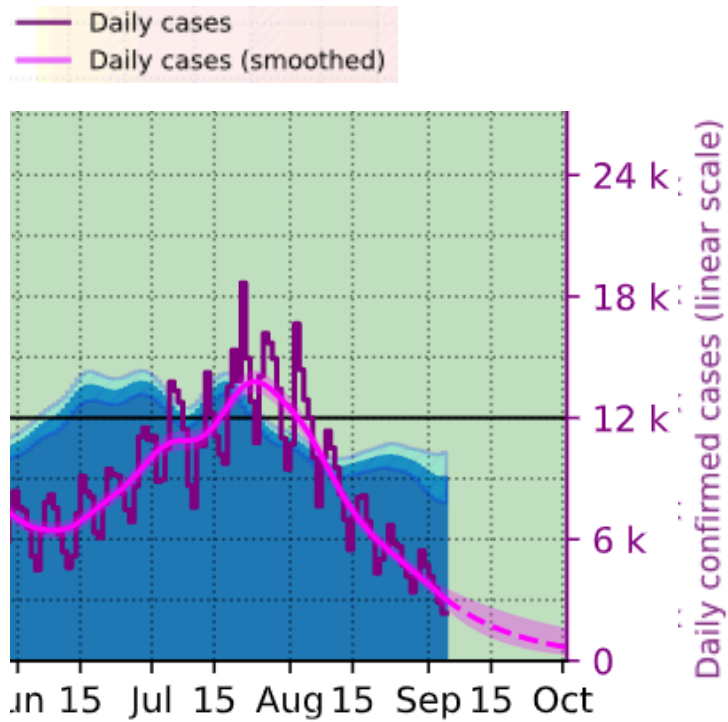
- the reproduction rate (R), which represents the speed of the virus spread, is 0.72 (see Figure below). When this R coefficient is less than 1, it is considered that the spread of the virus is decreasing and that we are in a period of decline of the pandemic.



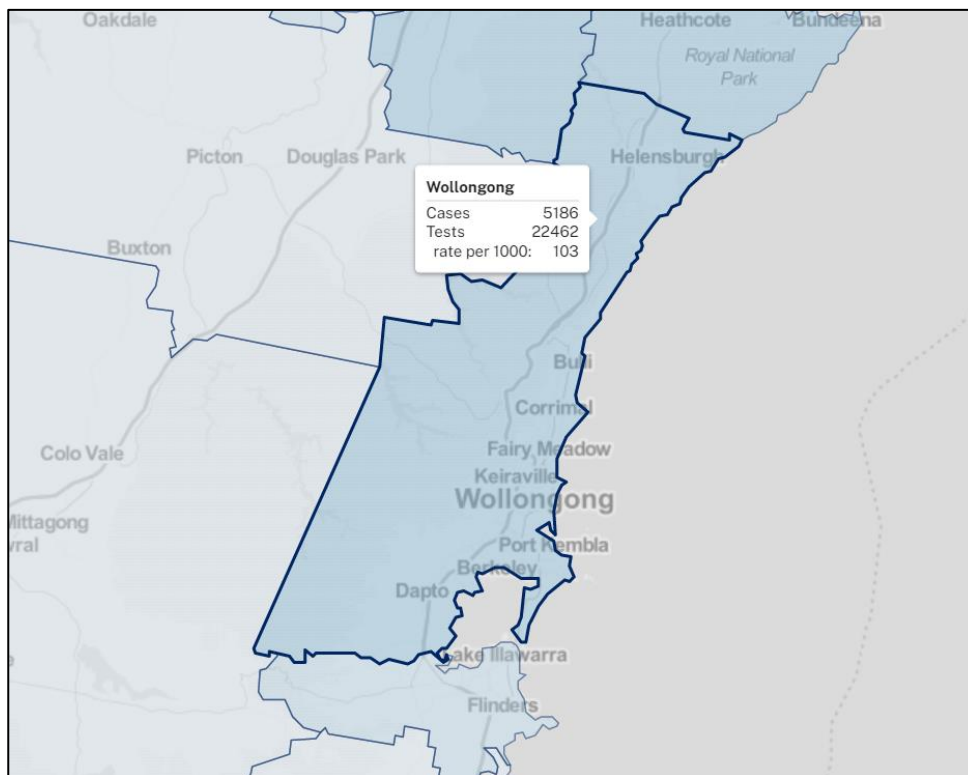
2) This favourable situation for the country as a whole is also found in New South Wales (NSW). In this state, the incidence rate (pink line on the Figure below) and the reproduction rate R (in blue on the Figure) are constantly decreasing. As of September 5, 2022, the incidence rate was estimated to be 28 per 100,000 people, and the R coefficient was 0.75 in NSW.



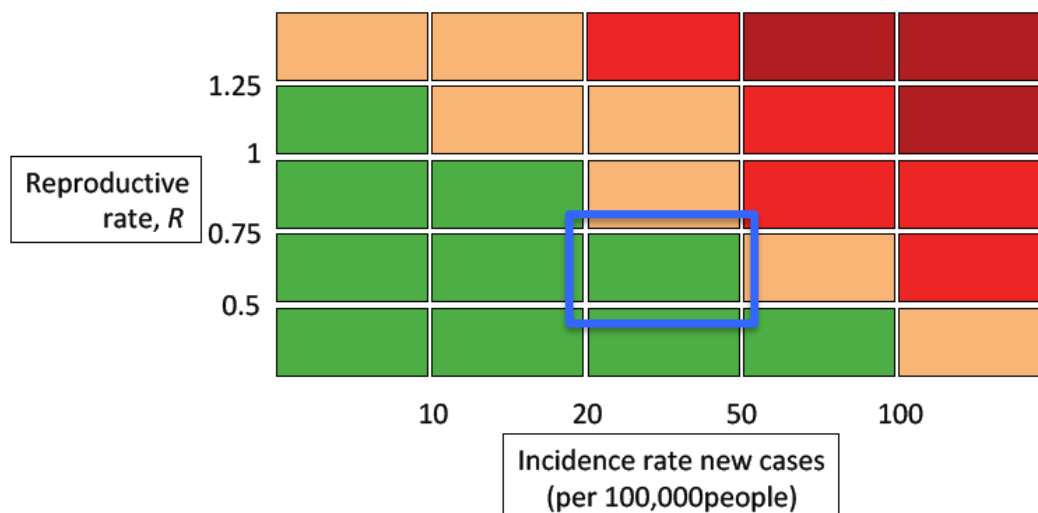
It can be seen in the Figure below that predictions through October 2022 allow for continued optimism with a steady decline in these two markers of pandemic situation, i.e. the daily new COVID cases (pink line) and reproduction rate R (blue).



3) In the Illawarra and Wollongong areas, conditions are also favourable. The most recent available incidence rate value is 64 per 100,000 people.



In conclusion, the epidemiological conditions are very favourable at this time. Although still present, the virus is circulating at a very low level, and there is currently no threat of a resumption of the pandemic. Based on the comprehensive data available from NSW, it can be concluded that the state **can be considered a green zone for pandemic COVID-19**.



Measures to be applied before the event.

Based on the current status of the pandemic, it can be concluded that only the measures put in place by the national health authorities for entry into the country should be applied.

From 6 July 2022, travelers entering or leaving Australia do not require a negative pre-departure test. Unvaccinated visa holders will no longer need a travel exemption to enter Australia. However, the usual rules for minimizing the risk of contamination must be strictly applied. Wearing a mask and maintaining a physical distance from other people are highly recommended, especially when traveling by air to Australia.

Given the current favourable state of the pandemic, **no prior negative Covid test will be required** to participate in the event.

Measures to be applied during the event.

In accordance with the UCI-COVID protocol for Road races established in its latest version of 24 June 2022, only Recommended or Desirable measures can be considered for the organization of the UCI Road World Championships.

However, during all the competitions, the provisions of current national and regional health regulation will be respected, paying particular attention to the use of masks, in the presence of sanitizing gels, to the physical distancing between all the people present.

Wearing a mask will be mandatory during all meeting in close rooms, i.e. team manager meetings, technical meetings, in the accreditation center.

On race days, and in particular in the start and finish areas, a safety zone will be maintained between the riders and the public, allowing the public to remain at a distance of 2-3 m from the riders. In the finish area, wearing a mask will be mandatory for all, officials, staff members, media,

Suspected COVID-19 cases.

In the event of a suspected case of COVID-19, teams must contact urgently the COVID-Doctor appointed by the organisers and the UCI Medical Director. The phone numbers of these physicians are as follows,

Medical hotline, +61 290 300 334

UCI Medical Director, +41 79 123 50 14

In accordance with the protocols in force in Australia, the suspected case will be taken in charge by the COVID-Doctor, the appropriate tests will be carried out and any isolation measures will be applied.