



2024 MOUNTAIN BIKE
WORLD CHAMPIONSHIPS



PAL ARINSAL
ANDORRA



2024

TECHNICAL GUIDE



Contents

1. INTRODUCTION	3
2. PROGRAM	3
3. RIDERS CATEGORIES.....	3
4. COMPETITORS SELECTION	3
5. PARTICIPATION QUOTA PER NATION	6
6. RIDER’S REGISTRATION PROCEDURE	6
6.1 ONLINE RIDER’S REGISTRATION.....	6
6.2 RIDERS CONFIRMATION AT THE EVENT.....	6
7. ACCREDITATION DELEGATION MEMBERS (EXCLUDING RIDERS).....	7
7.1 ONLINE ACCREDITATION REQUEST.....	7
7.2 ACCREDITATIONS PICK-UP	8
8. START ORDER – START PROCEDURES	9
8.1 START ORDER.....	9
8.2 XCO, XCC, XCR AND E-MTB START PROCEDURE	10
8.3 DHI START PROCEDURE	11
9. TECHNICAL ASSISTANCE (XCO-E-MTB).....	11
10. TEAM MANAGERS’ MEETING.....	12
11. RULES	12
12. ADDITIONAL RULES / BIKE CHECKS PROCEDURE FOR E-MTB	13
12.1 E-MTB – ADDITIONAL RULES.....	13
12.2 E-MTB - BIKE CHECKS PROCEDURE	13
13. RACE CLOTHING	15
14. OFFICIAL CEREMONIES.....	17
15. PRIZE MONEY	17
16. TEAM SPACE BOOKING FORM	18
17. OFFICIALS	18
18. USEFUL ADDRESSES	18
19. VENUE MAP.....	19
20. COURSE MAP – XCO/XCC	20
21. COURSE MAP – E-MTB	22
22. COURSE MAP – DHI.....	23

1. INTRODUCTION

This document summarises the information needed by the national federations concerning the participation of their riders at the 2024 UCI Mountain Bike World Championships.

Mainly intended for team managers, this document focuses on the purely sporting aspects of the 2024 UCI Mountain Bike World Championships. If you have any questions concerning this document, please do not hesitate to contact the UCI.

2. PROGRAM

The program of the competition is available on the [UCI website](#).

3. RIDERS CATEGORIES

According to the articles 4.1.002 to 4.1.006 and 4.8.002 competitions are open to competitors born in:

XCO EVENTS	YEAR OF BIRTH
Men / Women Elite	2001 and older (aged 23 and older)
Men / Women Under 23	2002, 2003, 2004 and 2005 (aged 19 to 22)
Men / Women Junior	2006 and 2007 (aged 17 and 18)
DHI EVENTS	YEAR OF BIRTH
Men / Women Elite	2005 and older (aged 19 and older)
Men / Women Junior	2006 and 2007 (aged 17 and 18)
E-MTB EVENTS	YEAR OF BIRTH
Men / Women Elite	2005 and older (aged 19 and over and include Masters)
XCC EVENTS	YEAR OF BIRTH
Men / Women Elite	2001 and older (aged 23 and older)
Men / Women Under 23	2002, 2003, 2004 and 2005 (aged 19 to 22)

4. COMPETITORS SELECTION

9.2.031 Categories for which the title of world champion will be awarded are as follows:

XCO	Men Elite (aged 23 and over); Men under 23 (ages from 19 to 22); Women Elite (aged 23 and over); Women under 23 (aged 19 to 22); Men Junior (aged 17 and 18); Women Junior (aged 17 and 18);
XCR	Team (aged 17 and over);

XCC	Men (aged 23 and over) Men under 23 (ages from 19 to 22); Women (aged 23 and over) Women under 23 (aged 19 to 22);
DHI	Men Elite (aged 19 and over); Women Elite (aged 19 and over); Men Junior (aged 17 and 18); Women Junior (aged 17 and 18);
E-MTB	Men (aged 19 and over and include Masters); Women (aged 19 and over and include Masters);

9.2.032 For the team relay, each nation may enter only a single team.

Each national team shall be made up of 1 Man Elite, 1 Woman Elite, 1 Man under 23, 1 Man Junior, 1 Woman under 23 and 1 Woman Junior. However, the following substitutions shall be permissible:

- Man Elite by Woman Elite or Man under 23 or Man Junior or Woman under 23 or Woman Junior;
- Woman Elite by Woman under 23 or by Woman Junior;
- Man under 23 by Woman Elite or Woman under 23 or Man Junior or Woman Junior;
- Woman under 23 by Woman Junior;
- Man Junior by Woman Junior.

Each rider selected must already be entered for the individual downhill or Olympic cross-country events.

The team composition must be returned by email (t.nuninger@gmail.com) by 27 August at 19h30 at the latest.

9.2.033 For the mountain bike world championship team relay, the team manager must use the form provided to notify the names and categories of the riders making up their team and their start order to the chief commissaire's panel at the end of the team managers' meeting the day before the event. This start order may not be altered subsequently.

The exchange boxes will be allocated on the basis of the results of the team relay event in the preceding world championships. The order of nations not placed will be determined by drawing lots. The first nation will be installed in box number 1 and so on.

⇒ Note that UCI points which will be awarded to the team relay will be given to the nation and not to the individual riders.

9.2.034 For the Men Elite, Women Elite, Men Under 23 and Men Junior XCO events and the Men Elite and Men Junior DHI events, the maximum number of riders for each team is determined on the basis of the classification by nation of the previous year's world championships, as per the table below:

Nations ranked	Maximum number of riders
1 to 10 and the host nation	7
11 to 20	6
21 to 30	5
31 or after	4
Unranked nations	3

For the Women Under 23 and Women Junior XCO events, the Women Elite and Women Junior DHI events, the maximum number is 7 riders per nation.

Each federation shall be permitted to enter 2 reserves in each category.

For cross-country short track (XCC), each rider selected must already be registered for the cross-country Olympic (XCO) event.

For the E-Mountain Bike (E-MTB), the criteria for the number of riders shall be defined yearly and it's available on the participation quota per nation.

9.2.036 The ranking by nations for UCI World Championships is calculated by adding the points scored by the 3 best placed riders of each nation. The system for awarding points is based on the total number of riders starting in each category, with a maximum of 300. If 100 riders start, the winner will score 100 points while the 100th placed rider would score 1. Should some starters not be given a finishing position, the last rider to be classified shall score the points for his or her position without taking account of the unclassified riders. Example: if 100 riders start and 80 riders are classified, the last of them will score 21 points.

For the UCI World Championships Team Relay, the nation will receive points in the ranking by nations for the event according to the methodology below:

The points for each participating rider in the cross-country team relay will be allocated to the ranking of the corresponding age category of each rider as follows. The system for awarding points is based on twice the total number of nations starting in the cross-country team relay. If 15 nations start, the winning nation would score 30 points while the 15th placed nation would score 2 points.

5. PARTICIPATION QUOTA PER NATION

The full table with the participation quota per nation is available on the [UCI website](#).

The extra quota for the Olympic champion can be requested by email to offroad@uci.ch.

The extra quota for a continental champion can be requested by email to offroad@uci.ch.

6. RIDER'S REGISTRATION PROCEDURE

6.1 ONLINE RIDER'S REGISTRATION

When?

The system will open on the:	Thursday 08 August 2024, 12:00 CET
The system will close on the:	Monday 19 August 2024, 12:00 CET
Entries lists will be published on:	Tuesday 20 August 2024, 14:00 CET

How?

Through the UCI website clicking as follows:

- Link: <https://regonline.uci.ch/>
- Access: personal login and password of each national federation.

Remarks

- Each national federation must respect the participation quota per nation.
- The format of each rider must be specified.
- For all formats and categories, each national federation can register two substitute riders but they must be clearly mentioned.
- The riders' accommodation must be entered at the time of the online registration.
- The start order for unclassified riders must be confirmed during the riders' confirmation at the venue.

Please note that registered riders will automatically be registered in the accreditation system. However, all accreditations for team personnel (including Team Managers) must be requested through the [Get Your Event platform](#).

6.2 RIDERS CONFIRMATION AT THE EVENT

When?

Monday 26.08.2024	9h00 - 13h00	Riders Confirmation >>> XCO, XCC, DHI, E-MTB
	14h00 - 17h00	Riders Confirmation >>> XCO, XCC, DHI, E-MTB Final confirmation XCC
Tuesday 27.08.2024	8h00 - 9h30	Riders Confirmation >>> XCO, DHI, E-MTB
	16h00 - 18h00	Riders Confirmation >>> XCO, DHI, E-MTB Final confirmation DHI Juniors, E-MTB & XCR by email 19h30
Wednesday 28.08.2024	8h00 - 10h00	Riders Confirmation >>> XCO, DHI Final confirmation >>> DHI Elite

Thursday 29.08.2024	8h00 - 10h00	Riders Confirmation >>> XCO Final Confirmation XCO Juniors
Friday 30.08.2024	8h00 - 9h00	Riders Confirmation >>> XCO
Saturday 31.08.2024	8h00 - 9h00	Riders Confirmation >>> XCO Final Confirmation XCO U23 and Elite

Where?

Sala La Closeta, Av. de Sant Antoni, 29, AD400 La Massana

<https://maps.app.goo.gl/Zxr9hfxSLBJftdyv9>

What?

All national federations have to show up at the time of the riders' confirmation to ensure the participation of their riders. The accreditation pick-up for a rider cannot be considered as a confirmation of his participation.

Remarks

- A rider declared unfit as a result of a nonconforming blood test may not be replaced.
- Injury or illness will not be accepted as a valid circumstance unless the rider is declared unfit to start by the official UCI doctor.
- At the time of the riders' confirmation, team managers must present their national outfit to the commissaires.
- 9.2.037 Race numbers must be collected at the time stated in the championship Program. Riders' licences and passports must be submitted to the commissaires panel. The race number for the team relay shall be given the morning of the event in accordance with the instructions given by the commissaires panel at the team managers' meeting held the day before the event.
- 1.3.076 A rider shall ensure that their identification number is visible and legible at all times. The identification number shall be well fixed and may not be folded or altered.
- Please note that training will not be authorised without a number plate.

7. ACCREDITATION DELEGATION MEMBERS (EXCLUDING RIDERS)

7.1 ONLINE ACCREDITATION REQUEST

For whom?

To avoid misunderstandings, the UCI has decided to grant a maximum number of accreditations to certain families according to the list below. However, these quotas correspond to a complete team and will be adapted to the number of riders who will take part in the 2024 UCI Mountain Bike World Championships.

Category	Function	Code	Quota
DELEGATION	President N.F	6.1	1
DELEGATION	General Secr. N.F.	6.2	1
DELEGATION	Official Delegate N.F.	6.3	2
SPORTING	Team Manager	6.4	2
SPORTING	National Technical Director	6.5	1
SPORTING	Press-Officer	6,10	1
SPORTING	Interpreter	6.11	1
SPORTING	Assistant Team Manager	6.13	1
DELEGATION	Accompanying Official Delegation	6.14	2
SPORTING	Coach	6.6	x
SPORTING	Doctor	6.7	x
SPORTING	Mechanic	6.8	x
SPORTING	Paramedical Assistant	6.9	x
DELEGATION	Accompanying Sport Delegation	6.15	x
SPORTING	Team Videographer	6.16	1
		Total	28

Function with a X – total quota of 15 accreditations to be spread within those functions

When?

The system will open on the: 8 August 2024
The system will close on the: 19 August 2024

How?

- Link: [GYE \(getyourevent.online\)](https://getyourevent.online)
- Access: personal login and password of each national federation.

7.2 ACCREDITATIONS PICK-UP

When?

Monday 26/8/2024	8h30 - 18h00
Tuesday 27/08/2024	9h00 -18h00
Wednesday 28/08/2024	9h00 -18h00
Thursday 29/08/2024	9h00 - 16h00
Friday 30/08/2024	9h00 - 16h30
Saturday 31/08/2024	8h30 -15h00
Sunday 1/09/2024	9h00 -12h00

Where?

Sala La Closeta, Av. de Sant Antoni, 29, AD400 La Massana

Union Cycliste Internationale

24 juillet 2024

Remark

- The accreditation pick-up for a rider cannot be considered as a confirmation of his participation. All national federations - by an appointed team manager only - have to show up at the time of the riders' confirmation to ensure the participation of their riders.

8. START ORDER – START PROCEDURES

8.1 START ORDER

9.2.038 The start order is determined as follows:

XCO Men Elite, XCO Women Elite, XCC Men Elite, and XCC Women Elite

1. As per the last published UCI XCO individual ranking.
2. Place 33rd to 40th of the start order will be allocated to riders ranked in below rankings, unless they are listed on the start order between the place 1st to 32nd according to point 1 and 2 above:

- top 10 of the UCI cyclo-cross individual ranking
- top 20 of the UCI road individual world ranking

The place 33rd to 40th will be allocated following the rank of each rider, whatever the ranking: UCI cyclo-cross or UCI road world ranking. If two or three riders have the same ranking, they will be placed by drawing lots.

3. As per the last published UCI XCO individual ranking.
4. Unclassified riders: by nations in rotation (*).

XCO Men under 23, XCO Women under 23, XCC Men under 23 and XCC Women under 23

1. As per the last published UCI XCO individual ranking.
2. Unclassified riders: by nations in rotation (*).

XCO Men Junior, XCO Women Junior

1. As per the last published UCI XCO junior individual ranking.
2. Unclassified riders: by nations in rotation (*).

DHI Men Elite, DHI Women Elite

For the qualifying round and the final:

1. Unclassified riders: by nations in rotation (*).
2. As per the last published UCI DHI individual ranking. The best rider starting last

DHI Men Junior, DHI Women Junior

For the qualifying round and the final:

1. Unclassified riders: by nations in rotation (*).
2. As per the last published UCI DHI individual ranking. The best rider starting last.

For all DHI events (Men Elite, Women Elite, Men Junior and Women Junior), riders are required to ride in the qualifying round. The number of riders qualifying for the final are as follows:

- Men Elite: top 80 riders in the qualifying round
- Women Elite: top 40 riders in the qualifying round
- Men Junior: top 60 riders in the qualifying round
- Women Junior: top 20 riders in the qualifying round

For the final in the Men Elite and Women Elite, the “protected riders” are:

- Riders ranked in the top 10 Women Elite and the top 20 Men Elite of the final world cup standings of the current season.

In case the UCI world cup final is held after the UCI world championships, riders ranked in the top 10 Women Elite and the 20 Men Elite of the latest world cup standings of the current season.

Even “protected riders” must start in the qualifying round in order to be entitled to ride the final.

(*) The start order of the riders within the team must be confirmed by the national federations during the riders’ confirmation. Taking each nation in turn on the basis of the classification by nation of the concerned category from the most recent mountain bike world championships, a place is allocated to the next rider in sequence. Unclassified nations take, on the basis of the same rotation system, the next places in an order determined by drawing lots.

E-MTB Men, E-MTB Women

1. Top 5 of the 2024 UCI E-MTB World Cup
2. Top 5 of the 2023 UCI E-MTB World Championships
3. In alternation, the best ranked rider of the 2024 UCI E-MTB World Cup and the best ranked rider of the 2023 UCI E-MTB World Championships
4. Unclassified riders: by nations in rotation (*).

8.2 XCO, XCC, XCR AND E-MTB START PROCEDURE

4.1.030 For Olympic Games, world championships, world cup, continental championship events and hors class events the organiser must make provision for a call-up area which is sufficiently large for riders to warm up in, close to the start zone. Other organisers are also encouraged to install a call-up area.

4.1.031 In mass start events, riders must be called to the start no earlier than 20 minutes before the scheduled start of the race. This period can be reduced where the number of riders allows.

The riders line up in the order in which they are to be called to the start line. The number of riders on each line is decided by the president of the commissaires' panel and supervised by a commissaire. The rider himself decides which position on the line to take.

Once the riders are lined up, warm-up (by rollers, turbo trainer, etc.) is excluded inside or outside the start area.

The start is given by the commissaire using the following procedure: warnings 3, 2, 1 minutes and 30 seconds before the start, then a final announcement that the start is given within the next 15 seconds.

A starting pistol or start lights, if none is available, a whistle, is used to give the start.

4.1.033 The start briefing is given in at least one of the official languages of the UCI.

8.3 DHI START PROCEDURE

- A **Downhill Qualification for Junior** will take place on 28 August 2024 at 11:00 and **for Elite** on 29 August 2024 at 15:45.
- All riders are required to ride in the qualification round.
- Even “protected riders” must start in the qualifying round in order to be entitled to ride the final. The number of riders qualifying for the final is as per Article 9.2.038.
- DHI start order is as per Article 9.2.038.

9. TECHNICAL ASSISTANCE (XCO-E-MTB)

4.2.044 No rider may turn back on the course to reach a feed/technical assistance zone. Any rider doing so is disqualified. Only within the feed/technical assistance zone itself, a rider may turn back without obstructing other competitors.

4.2.045 Technical assistance during a race is permitted subject to the conditions below.

4.2.046 Authorised technical assistance during a race consists of repairs to or the replacement of any part of the bicycle other than the frame. Bike changes are not permitted, and the rider must cross the finish line with the same handlebar number plate that he had at the start.

For E-MTB battery changes is not permitted.

4.2.047 Technical assistance can only be given in the feed/technical assistance zones.

4.2.048 Spare equipment and tools for repairs must be kept in these zones. Repairs and equipment changes can be carried out by the rider himself or with the help of a teammate, team mechanic or neutral technical assistance.

4.2.049 In addition to technical assistance in feed zones, technical assistance is permitted outside these zones only between riders who are members of the same UCI ELITE MTB TEAM, UCI MTB TEAM or of the same national team. For the world championships, technical assistance is permitted only between riders of the same national team.

Riders may carry tools and spare parts provided that these do not involve any danger to the rider himself or the other competitors.

10. TEAM MANAGERS' MEETING

No team managers' meeting will be held. All information will be distributed by communique.

11. RULES

9.2.001 It is the National Federations who select riders to participate in World Championships.

Riders classified as "refugee" pursuant to article 1.1.033 shall register directly with the UCI. The UCI may authorise riders classified as "refugee" in addition to the quotas provided for in the UCI Regulations and qualification regulations, without prejudice to specific eligibility requirements that may be determined.

9.2.003 National Federations shall enter with the UCI via its website.

9.2.004 The enrolment of the federations' riders shall reach the UCI at the latest within the following deadlines:

- For 2024, the deadline is 19 August 2024, 12:00 CET

9.2.005 Save in the case of an act of God, a National Federation that has enrolled by returning the enrolment form for a World Championship and that does not participate shall be liable to a fine of CHF 500 to CHF 2,000.

9.2.008 Unless prevented by an act of God, a rider once announced as taking the start and who fails to present, shall be liable to a fine of CHF 500 to CHF 5,000.

An injury or sickness shall be recognised as an act of God only if the rider is declared incapable of taking the start by the UCI official doctor.

9.2.009 In all individual specialities, the outgoing World Champion may take part in addition to the number of starters that the National Federation of such Champions may enter under the qualification regulations.

The same principle is applicable for the Olympic Champion on the occasion of the first World Championship following Olympic Games or, for the mountain bike, the next two mountain bike World Championships.

For the Continental Champion, this facility is limited to the first World Championships following the awarding of the title of Continental Champion.

- 1.3.031 Wearing a rigid safety helmet shall be mandatory during competitions and official training sessions in all disciplines except indoor cycling and BMX Freestyle Flatland.
- 4.1.038 The use of radio links or other remote means of communication with riders is forbidden except at UCI World Cups and subject to UCI authorisation.

12. ADDITIONAL RULES / BIKE CHECKS PROCEDURE FOR E-MTB

12.1 E-MTB – ADDITIONAL RULES

- 4.8.001 An E-Mountain Bike is a bike operated with two energy sources, human pedal power and an electric engine, which only provides assistance when the rider is pedaling. Only “Pedelec” type of bikes are allowed in UCI event.

E-Mountain bike events must be organised in accordance with the following bike standards:

- Engine assistance up to 25km/h
- Pedaling assistance only, although a start-up assistance not exceeding 6km/h without pedaling is allowed

Battery

- 4.8.005 Riders can only use the battery in place on their bike and cannot carry an additional battery during the competition.

12.2 E-MTB - BIKE CHECKS PROCEDURE

The UCI will carry out bike checks and the bike checks procedure will take place as follow:

In order to ensure races respecting the rules, only bikes respecting the EN15194-2017 norm equipped with engines brands allowing strict checks will be allowed to the start. In accordance with the regulation mention in the preceding point, only “Pedelec” e-bikes will be allowed for these World Championships.

Riders registration – E-Bikes information form

Each participant must fill the form given in order to be allowed to take part to the World Championships:

<https://forms.gle/8nCRhM4p8Me2Ye548>

Pre-race Bike checks

27 August from 11h00 – close to the start/finish area

Three staff members. 1: rider reception 2: wheel circumference rollout measurement 3: computer diagnostic

1. Mechanical check

The bikes will be checked. After this check, the bikes will be sticked and given back to the riders in order to prepare for the race. The exact time of each bike control will be communicated to each rider after the rider's confirmation.

1.1 Engine diagnostic checks

- 25kph programming verification
- Rear wheel circumference diagnostic value to be measured, logged and compared to rollout value
- Software update code to be logged
- Light port utilisation to be logged

1.2 Rear wheel rollout measurement (mandatory checking of rider's reserve wheels)

- Rear wheel rollout circumference to be measured, logged and compared to diagnostic value
 - Rear wheel size to be logged
- A 5% difference tolerance will be accepted with the engine diagnostic*

1.3 Tuning kit search

- Physical search under motor housing in certain cases

1.4 Setting up stickers (wheels)

- Rear wheel
- Spare rear wheel (if presented for mechanical check)

2. Administrative check

UCI competition license

In event bike check

1. E-MTB Start procedure (UCI commissaires)

1.1 The riders line up in the order in which they are to be called to the start line. The number of riders on each line is decided by the president of the commissaires' panel and supervised by a commissaire. The rider himself decides which position on the line to take

1.2 Under supervision of a commissaire during the gridding of riders, each competitor must switch off, then reboot their bikes.

1.3 Visual inspection of stickers by commissaire (rear wheel)

1.4 Manipulation of smartphones/tablets inside the start area by riders or support staff is strictly prohibited

2. Speed trap (Technical staff)

- Speed gun must be discreet wherever possible yet offer a straight line of sight to the rider, ideally on a long slight incline.

- All values to be logged (Rider n° & kph)
- Once a bike is flagged it shall be checked at the finish with top 5 bikes for visual inspection

Post race checks

1. EMTB finish zone: Top 5 Male & Female & flagged bikes
 - Immediate presentation of athlete's bikes to the closed control park in E-MTB finish zone (Park to be installed before the E-MTB start)
- 1.1 Engine diagnostic checks
 - 25kph programming verification
 - Rear wheel circumference diagnostic value to be measured, logged and compared to rollout value
 - Software update code to be logged
 - Light port utilisation to be logged
- 1.2 Rear wheel rollout measurement
 - Rear wheel rollout circumference to be measured, logged and compared to diagnostic value
 - Rear wheel size to be logged
A 5% difference tolerance will be accepted with the engine diagnostic
- 1.3 Tuning kit search
 - Physical search under motor housing in certain cases

Attention



The missing or non-compliance of one of the above document or checks will lead to an immediate participation refusal or disqualification!

The presence of the rider or a representative is mandatory for each control.



E-bikes batteries are not accepted in regular commercial flights. Be aware of this transport constraints while preparing your trip to avoid any issue.

13. RACE CLOTHING

National federations shall submit to the commissaires' panel of events as specified in art. 1.3.059, a sample of their national team clothing for validation. The design, colour, place and size of the advertising spaces of the validated equipment must be identical for all athletes participating to the applicable events.

We encourage you to present to the UCI your national apparels before sending them for final production.

The apparel of the riders of a national team must always be identical to the last sample submitted.

Riders of the same national team must wear identical racing shorts during the same event, except for advertising space included in a lateral band 9 cm wide, which may differ from one rider to another. This means that national federations must also provide their riders with national racing shorts.

The team managers must therefore present the national jersey and shorts to the commissaires' panel at the riders confirmation.

1.3.057 Advertising matter, as detailed in the "UCI jersey visual guidelines" brochure published on the UCI website, shall be used at the national federation discretion - [UCI Jerseys Visual Guidelines](#).

Advertising matter on jersey and shorts may vary from one rider to another. The design of the jersey and shorts may vary from one category of rider to another.

Advertising on protective leggings worn for downhill mountain bike, trials and BMX events is not subject to the advertising restrictions on shorts.

Additionally, the rider's name may appear on the back of the jersey.

The above measures also apply to other items of clothing worn during competition (rain jackets, etc.).

DHI Race Clothing

4.3.011 Jersey

The jersey shall be a long-sleeved shirt whose sleeves extend down to the rider's wrists. Jerseys used in downhill events should be of a type specifically designed and sold for use in BMX Racing or Mountain Bike downhill events. Jerseys designed for road cycling, skinsuits, or one-piece suits comprising the jersey and the pants/shorts are not permitted for use in downhill events. The jersey must be either close fitting around the waist or must be tucked into the pants before the start to not cause interference.

Pants

Long pants or short pants combined with suitable knee and shin protection are authorised. Such long or short pants should be of a type that is specifically designed and sold for use in BMX Racing or Mountain Bike downhill events. Long pants of the type described above must be of one-piece construction and made of tear-resistant material. They should cover the entire length of both legs until just above the shoe or ankle. Short pants of the type described above must be of one-piece construction and made of tear-resistant material. They should be worn together with suitable leg protection, that covers the entire knee and the entire shin until just above the ankle.

4.3.012 A full-face helmet must be worn properly both when racing and when training on the course. The helmet must be fitted with a peak. Open-face helmets may not be worn.

4.3.013 The UCI strongly recommends that riders wear the following protection:

Union Cycliste Internationale

24 juillet 2024

- back, elbow, knee and shoulder protectors made of rigid materials;
- protection for the nape and the cervical vertebrae;
- padding on shins and thighs;
- broad full-length trousers made from rip-resistant material incorporating protection for the knees and calves, or broad-cut shorts made from rip-resistant material plus knee and calf protectors with a rigid surface;
- long sleeved shirt;
- full finger gloves.

14. OFFICIAL CEREMONIES

The following points apply to the official ceremonies:

- 9.1.044 Within 10 minutes following the end of each speciality (unless otherwise provided and duly recorded in an official communiqué), the World Champion, or the world champion team of the team time trial, as well as the second and the third placed riders shall be ready for the official ceremony that shall be conducted under the responsibility of the President of the Commissaires' Panel.
- 9.1.046 Riders shall appear in racing attire, wearing their national jerseys but bare-headed and without headband or glasses, until they leave the official ceremony enclosure.
- 9.1.050 A World Champion may not wear the jersey identifying his title and bearing the regulation advertisement of his main sponsor(s) until, at earliest, the day following that on which he received it.
- 9.1.051 Any infringement of the provisions of articles 9.1.044 to 9.1.050 above shall be punished by a fine of CHF 2,000 to CHF 10,000 minimum. A higher fine may be imposed depending on the advantage derived from the offence.

15. PRIZE MONEY

UCI World Championships / Championnats du Monde UCI							
Ranking / Classement	MEN & WOMEN / HOMMES & FEMMES						
	ELITE		U23		JUNIORS / JUNIOR		
	XCO	XCC & XCM & DHI & E-MTB & EDR & EDR-E & SNO	XCO	XCC	XCO	DHI	TEAM RELAY
1st / 1er	8'000 €	5'000 €	4'000 €	2'500 €	2'000 €	1'250 €	15'000 €
2nd / 2ème	4'000 €	2'500 €	2'000 €	1'250 €	1'000 €	675 €	7'500 €
3rd / 3ème	2'000 €	1'250 €	1'000 €	675 €	500 €	340 €	3'750 €
Total	14'000 €	8'750 €	7'000 €	4'425 €	3'500 €	2'265 €	26'250 €

Prize money will be paid by the UCI to the national federation who is then responsible to transfer the money to the riders.

16. TEAM SPACE BOOKING FORM

The Team space booking forms are available with the organiser directly.

17. OFFICIALS

UCI Commissaires panel

President	EVANS Justin	USA
Chief Commissaire Assistant	POL LEON Arianna	ESP
Secretary	NUNINGER Thierry	FRA
Member	KREJCOVA Veronika	CZE
Member	STEYN Deon	RSA
Member	TAM Csilla	HUN
Member	BLAKEY Peter	AUS
Technical Commissaire	WALLS Adrian	GBR
UCI Technical Delegate - XC	WABEL Beat	SUI
UCI Technical Delegate – E-MTB	PAGE Kieran	FRA
UCI Technical Delegate - DHI	BALAUD Alex	FRA

18. USEFUL ADDRESSES

If you need further information about the 2024 UCI Mountain Bike World Championships, please contact the following people :

UCI

Union Cycliste Internationale
Allée Ferdi Kübler 12
1860 Aigle, Switzerland
Phone +41 24 468 58 11
Website: www.uci.ch

Peter Van Den Abeele
Sports Director

Annelise Torrent Day
Off-Road Manager
annelise.torrentday@uci.ch

Caroline Constantin
Off-Road Coordinator
caroline.constantin@uci.ch

Simon Burney
Mountain Bike Consultant
simon.burney@uci.ch

Union Cycliste Internationale
24 juillet 2024

ORGANISING COMMITTEE

PAL ARINSAL – EMAP

Edifici el Planell – Estacio de Pal

AD400 La Massana

Andorra

Josep Marticella

General Director

jmarticella@palarinsal.com

Maria Zorzano

General Secretary

mzorzano@palarinsal.com

OFFICIAL UCI HOTEL

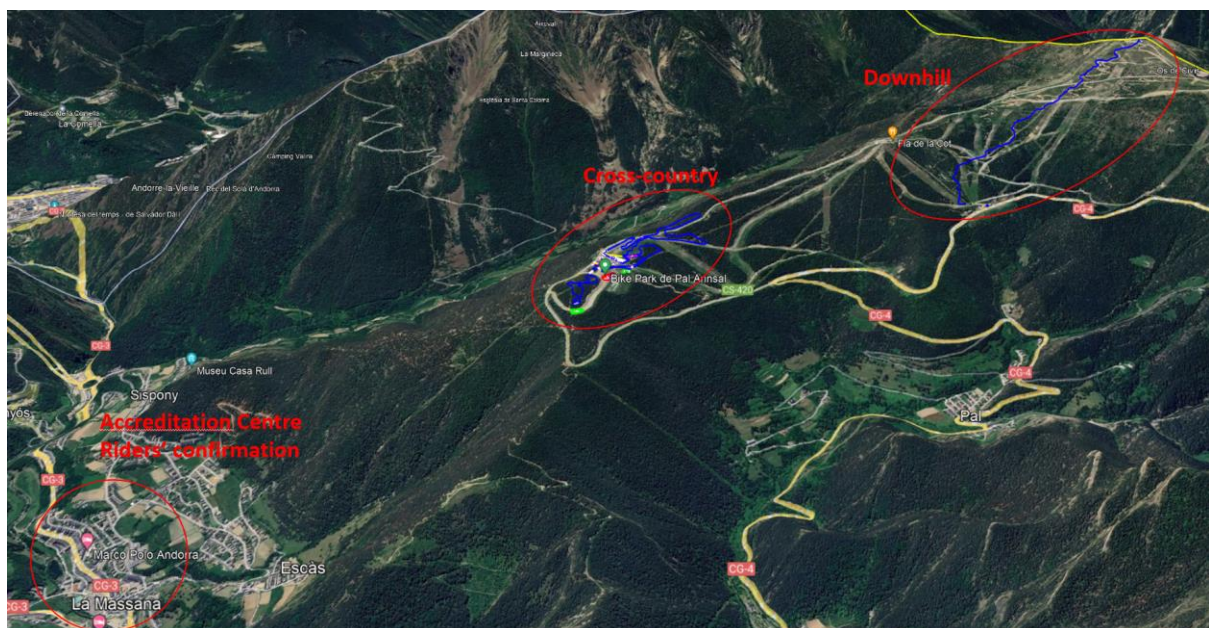
Hotel Rutllan

Av. del Ravell, 3

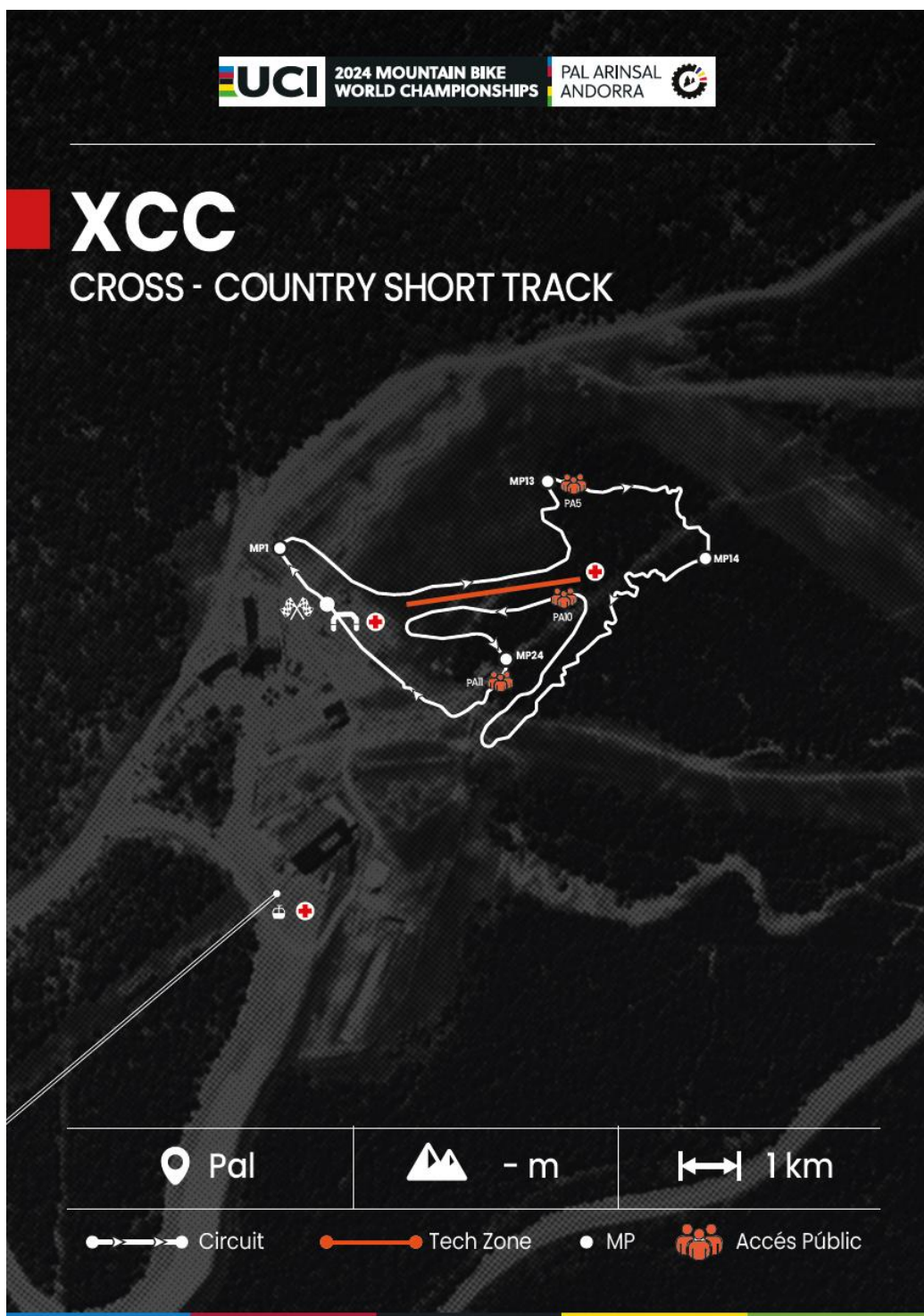
AD400 La Massana

Andorra

19. VENUE MAP

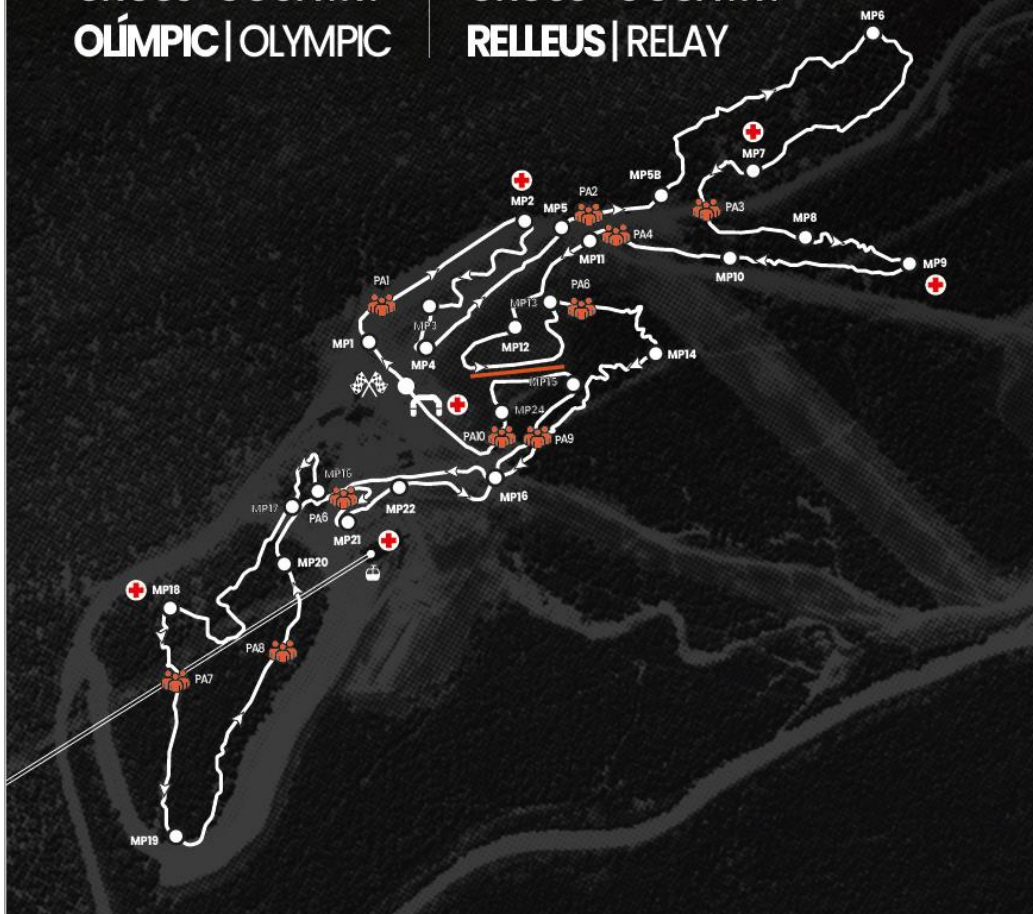


20. COURSE MAP – XCO/XCC



XCO
 CROSS-COUNTRY
 OLÍMPIC | OLYMPIC

XCR
 CROSS-COUNTRY
 RELLEUS | RELAY



 Pal

 160 m

 4 km

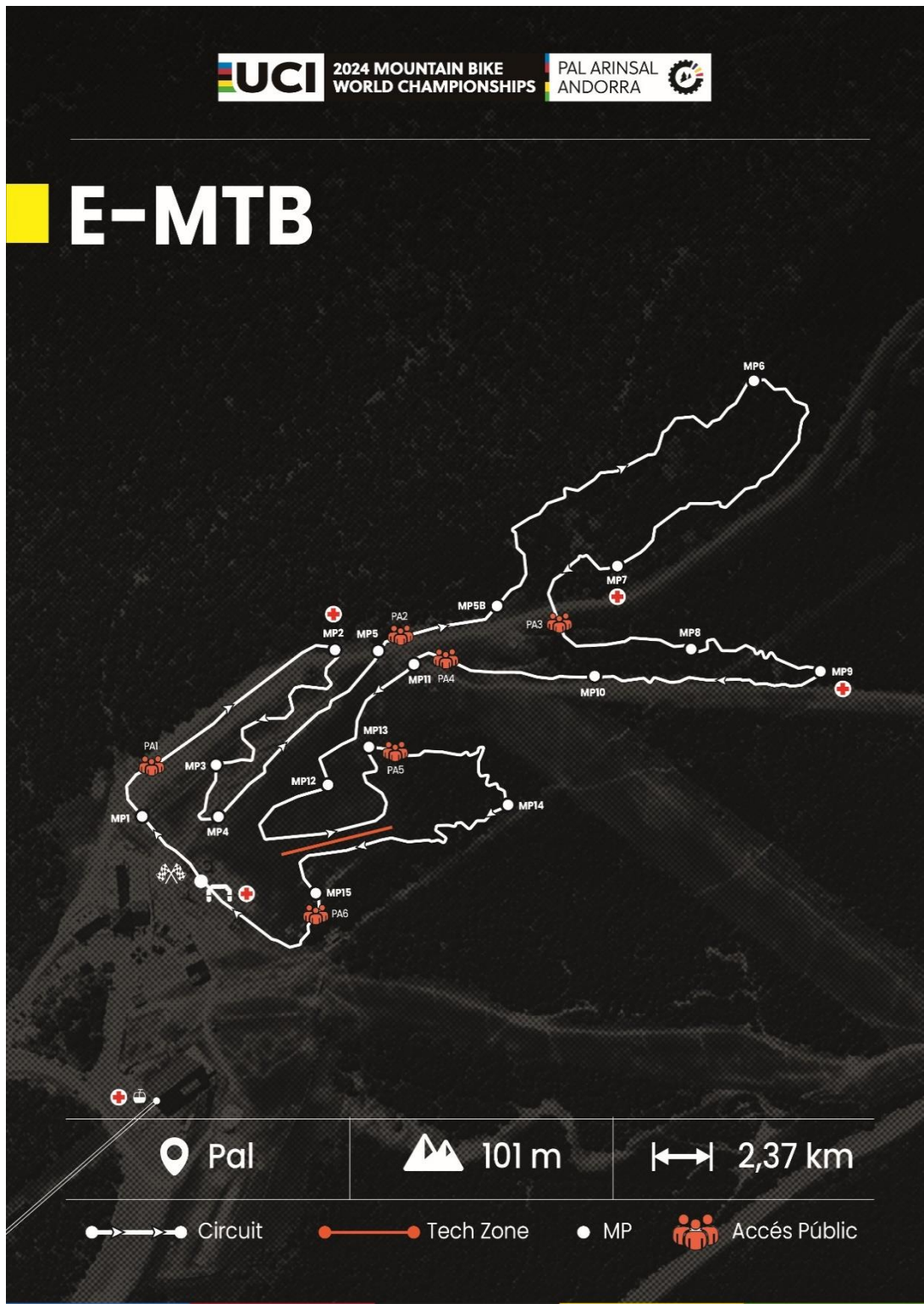
 Circuit

 Tech Zone

 MP

 Accés Públic

21. COURSE MAP – E-MTB



22. COURSE MAP – DHI

