



**2025 MOUNTAIN BIKE
WORLD CHAMPIONSHIPS**



**VALAIS
SWITZERLAND**



2025

TECHNICAL GUIDE



Contents

1. INTRODUCTION.....	3
2. PROGRAM	3
3. RIDERS CATEGORIES.....	3
4. COMPETITORS SELECTION	4
5. PARTICIPATION QUOTA PER NATION	6
6. RIDER'S REGISTRATION PROCEDURE	7
6.1 ONLINE RIDER'S REGISTRATION	7
6.2 RIDERS CONFIRMATION AT THE EVENT	7
7. ACCREDITATION DELEGATION MEMBERS (EXCLUDING RIDERS).....	9
7.1 ONLINE ACCREDITATION REQUEST	9
7.2 ACCREDITATIONS PICK-UP	10
8. START ORDER – START PROCEDURES	11
8.1 START ORDER.....	11
8.2 XCO, XCC, XCR AND E-MTB START PROCEDURE.....	13
8.3 DHI START PROCEDURE	13
9. TECHNICAL ASSISTANCE.....	13
10. TEAM MANAGERS' MEETING.....	14
11. RULES	14
12. ADDITIONAL RULES / BIKE CHECKS PROCEDURE FOR E-MTB XC and E-EDR	15
12.1 ADDITIONAL RULES.....	15
12.2 BIKE CHECKS PROCEDURE	15
13. ADDITIONAL RULES FOR EDR AND E-EDR	16
13.1 ADDITIONAL RULES.....	16
14. RACE CLOTHING	16
15. OFFICIAL CEREMONIES.....	17
16. PRIZE MONEY	18
17. TEAM SPACE BOOKING FORM	18
18. OFFICIALS	18
19. USEFUL ADDRESSES	19
20. UCI ATHLETES' COMMISSION VOTE.....	19
21. GENERAL COMPETITION MAP.....	21
22. VENUE MAP – XCO/XCR	22
23. VENUE MAP – XCM	22
23.1 RACE INFORMATION – XCM	23
24. VENUE MAP – XCC	28
25. VENUE MAP – DHI.....	29
26. VENUE MAP – E-MTB	29
27. VENUE MAP – PUM.....	30
28. VENUE MAP – EDR/E-EDR.....	30

1. INTRODUCTION

This document summarises the information needed by the national federations concerning the participation of their riders at the 2025 UCI Mountain Bike World Championships.

Mainly intended for team managers, this document focuses on the purely sporting aspects of the 2025 UCI Mountain Bike World Championships. If you have any questions concerning this document, please do not hesitate to contact the UCI.

2. PROGRAM

The program of the competition is available on the [UCI website](#).

3. RIDERS CATEGORIES

According to the articles 4.1.002 to 4.1.007, 4.6.002 and 4.8.002 competitions are open to competitors born in:

XCO EVENTS

Men / Women Elite
Men / Women Under 23
Men / Women Junior

YEAR OF BIRTH

2002 and older (aged 23 and older)
2003, 2004, 2005 and 2006 (aged 19 to 22)
2007 and 2008 (aged 17 and 18)

XCM EVENTS

Men / Women

YEAR OF BIRTH

2006 and older (aged 19 and older)

XCC EVENTS

Men / Women Elite
Men / Women Under 23

YEAR OF BIRTH

2002 and older (aged 23 and older)
2003, 2004, 2005 and 2006 (aged 19 to 22)

DHI EVENTS

Men / Women Elite
Men / Women Junior

YEAR OF BIRTH

2006 and older (aged 19 and older)
2007 and 2008 (aged 17 and 18)

E-MTB EVENTS

Men / Women

YEAR OF BIRTH

2006 and older (aged 19 and over)

PUM EVENTS

Men / Women

YEAR OF BIRTH

2008 and older (aged 17 and over)

EDR EVENTS

Men / Women Elite
Men / Women Junior

YEAR OF BIRTH

2006 and older (aged 19 and older)
2007 and 2008 (aged 17 and 18)

E-EDR EVENTS

Men / Women Elite

YEAR OF BIRTH

2006 and older (aged 19 and older)

4. COMPETITORS SELECTION

9.2.031 Categories for which the title of world champion will be awarded are as follows:

XCO	Men Elite (aged 23 and over); Men under 23 (ages from 19 to 22); Women Elite (aged 23 and over); Women under 23 (aged 19 to 22); Men Junior (aged 17 and 18); Women Junior (aged 17 and 18);
XCM	Men (aged 19 and over); Women (aged 19 and over);
XCR	Team (aged 17 and over);
XCC	Men (aged 23 and over); Men under 23 (ages from 19 to 22); Women (aged 23 and over); Women under 23 (aged 19 to 22);
DHI	Men Elite (aged 19 and over); Women Elite (aged 19 and over); Men Junior (aged 17 and 18); Women Junior (aged 17 and 18);
E-MTB	Men (aged 19 and over); Women (aged 19 and over);
PUM	Men (aged 17 and over); Women (aged 17 and over);
EDR	Men Elite (aged 19 and over); Women Elite (aged 19 and over); Men Junior (aged 17 and 18); Women Junior (aged 17 and 18);
E-EDR	Men Elite (aged 19 and over); Women Elite (aged 19 and over);

9.2.032 For the team relay, each nation may enter only a single team. Each national team shall be made up of 1 Man Elite, 1 Woman Elite, 1 Man under 23, 1 Man Junior, 1 Woman under 23 and 1 Woman Junior. However, the following substitutions shall be permissible:

- Man Elite by Woman Elite or Man under 23 or Man Junior or Woman under 23 or Woman Junior;
- Woman Elite by Woman under 23 or by Woman Junior;
- Man under 23 by Woman Elite or Woman under 23 or Man Junior or Woman Junior;
- Woman under 23 by Woman Junior;
- Man Junior by Woman Junior.

Each rider selected must already be entered for the individual downhill or Olympic cross-country events.

The team composition must be returned by email (mtbsecretary@uci.ch) by 10 September at 19h30 at the latest.

9.2.033 For the mountain bike world championships team relay, the team manager must use the form provided to notify the names and categories of the riders making up their team and their start order to the chief commissaire's panel at the date and time set in the official event schedule. This start order may not be altered subsequently.

The exchange boxes will be allocated on the basis of the results of the team relay event in the preceding world championships. The order of nations not placed will be determined by drawing lots. The first nation will be installed in box number 1 and so on.

⇒ Note that UCI points which will be awarded to the team relay will be given to the nation and not to the individual riders.

9.2.034 For the Men Elite, Women Elite, Men Under 23 and Men Junior XCO events and the Men Elite and Men Junior DHI events, the maximum number of riders for each team is determined on the basis of the classification by nation of the previous year's world championships, as per the table below:

Nations ranked	Maximum number of riders
1 to 10 and the host nation	7
11 to 20	6
21 to 30	5
31 or after	4
Unranked nations	3

For the Women Under 23 and Women Junior XCO events, the Women Elite and Women Junior DHI events, the maximum number is 7 riders per nation.

Each federation shall be permitted to enter 2 reserves in each category.

For cross-country short track (XCC), each rider selected must already be registered for the cross-country Olympic (XCO) event.

For E-Mountain Bike (E-MTB), the maximum number of riders shall be defined yearly.

- Riders ranked in result 1 to 10 of the 2024 UCI E-Mountain Bike World Championships (Pal Arinsal, Andorra)
- Riders ranked in Series standing 1 to 15 of the 2025 UCI E-Mountain Bike World Cup Series (04.08.2025)

Additionally, each National Federation is allowed to register 5 riders to the quota above.

For Enduro and E-Enduro (EDR/E-EDR), the maximum number of riders shall be defined yearly.

Enduro quota:

- The National Federations can enter 5 Men Elite, 5 Women Elite, 7 Men Junior and 7 Women Junior

- The top 30 Men Elite, top 15 Women Elite, Top 10 men Junior and Top 10 Women Junior of each round of the UCI Enduro World Cup obtain a qualification for the UCI Enduro World Championships
- The top 100 men and top 50 women of the Enduro overall rankings obtain a qualification for the UCI Enduro World Championships.

E-Enduro quota:

- The National Federations can enter 5 men and 5 women.
- Any rider ranked in the top 100 men and top 50 women of the Enduro overall rankings obtain a qualification for the UCI E-Enduro World Championships.

For Pump Track (PUM), the criteria for the number of riders as well as registration fees shall be defined yearly.

For Pump Track (PUM), the riders are eligible via the Velosolutions Pump Track UCI World Championships Qualifier events. Riders Ranked in result 1 to 4 of each round. If there are less than 3 riders in the race, only the winner can qualify.

The National Federations can enter 1 man and 1 woman on top of the pre-qualified riders.

9.2.035 For the XCM event, each national federation can enter 10 men and 10 women.

Supplementary to the 20 men and 20 women nominated by the national federation, top 20 men and women of each round of the UCI Cross-country Marathon World Cup as well as the top 80 of the UCI XCM individual ranking obtain a qualification for the UCI Marathon World Championships.

9.2.036 The ranking by nations for UCI World Championships is calculated by adding the points scored by the 3 best placed riders of each nation. The system for awarding points is based on the total number of riders starting in each category, with a maximum of 300. If 100 riders start, the winner will score 100 points while the 100th placed rider would score 1. Should some starters not be given a finishing position, the last rider to be classified shall score the points for his or her position without taking account of the unclassified riders. Example: if 100 riders start and 80 riders are classified, the last of them will score 21 points.

For the UCI World Championships Team Relay, the nation will receive points in the ranking by nations for the event according to the methodology below:

The points for each participating rider in the cross-country team relay will be allocated to the ranking of the corresponding age category of each rider as follows. The system for awarding points is based on twice the total number of nations starting in the cross-country team relay. If 15 nations start, the winning nation would score 30 points while the 15th placed nation would score 2 points.

5. PARTICIPATION QUOTA PER NATION

The full table with the participation quota per nation is available on the [UCI website](#).

The extra quota for a continental champion can be requested by email to offroad@uci.ch.

6. RIDER'S REGISTRATION PROCEDURE

6.1 ONLINE RIDER'S REGISTRATION

When?

The system will open on the:	Monday 11 August 2025, 12:00 CET
The system will close on the:	Thursday 21 August 2025, 12:00 CET
Entries lists will be published on:	Friday 22 August 2025, 14:00 CET

How?

Through the UCI website clicking as follows:

- The online **UCI DataRide** platform for registering riders can be accessed [here](#).
- User and Password: User access requested through the form.
- New user: Please complete the request [here](#).

Remarks

- Each national federation must respect the participation quota per nation.
- The format of each rider must be specified.
- For all formats and categories, each national federation can register two substitute riders but they must be clearly mentioned.
- The riders' accommodation must be entered at the time of the online registration.
- The start order for unclassified riders must be confirmed during the riders' confirmation at the venue.

Please note that registered riders will automatically be registered in the accreditation system. However, all accreditations for team personnel (including Team Managers) must be requested through the [Get Your Event platform](#).

Pump Track – besides the National Team quota, the riders that will qualify directly via the Velosolutions UCI Pump Track World Championships Qualifier events will be confirmed by the Series promoter.

6.2 RIDERS CONFIRMATION AT THE EVENT

When?

**Cross-country Olympic, Cross-country Short Track and Cross-country Team Relay
Patinoire d'Ycoor, Route du Rawyl 56, 3963 Crans-Montana**

Monday 08.09.2025	09h00 – 12h00 >> <i>Final Confirmation Cross-country Short Track</i> 13h00 – 16h00
Wednesday 10.09.2025	09h00 – 12h00 19h30 >> <i>Final Confirmation Cross-country Team Relay by email to</i> mtbsecretary@uci.ch
Thursday 11.09.2025	09h00 – 10h00 >> <i>Final Confirmation XCO Junior</i>
Friday 12.09.2025	09h00 – 10h00 >> <i>Final Confirmation XCO Men U23 and Women Elite</i>
Saturday 13.09.2025	09h00 – 10h00

>> Final Confirmation XCO Women U23 and Men Elite

Cross-country Marathon

Cour Roger Bonvin, 1950 Sion

Friday 05.09.2025 13h00 – 16h00

E-Mountain Bike Cross-country

Hotel Onya, Ritistrasse 141, 3997 Bellwald

Wednesday 03.09.2025 11h00 – 13h00

Downhill

Palladium, Route du Centre sportif 1, 1874 Champéry

Wednesday 03.09.2025 13h00 – 17h00

Thursday 04.09.2025 09h00 – 11h00

>> Final Confirmation DHI Junior

Friday 05.09.2025 08h30 – 10h00

>> Final Confirmation DHI Elite

Enduro and E-Enduro

Saal Rondo, Gemeinde Fiesch, Furkastrasse, 3984 Fiesch

Friday 29.08.2025 14h00 – 17h00

Pump Track

Patinoire de Monthey, Route du Verney 34, 1870 Monthey

Tuesday 02.09.2025 09h30 – 11h30

Wednesday 03.09.2025 09h00 – 10h00

What?

All national federations have to show up at the time of the riders' confirmation to ensure the participation of their riders. The accreditation pick-up for a rider cannot be considered as a confirmation of his participation.

Remarks

- A rider declared unfit as a result of a nonconforming blood test may not be replaced.
- Injury or illness will not be accepted as a valid circumstance unless the rider is declared unfit to start by the official UCI doctor.
- At the time of the riders' confirmation, team managers must present their national outfit to the commissaires.
- 9.2.037 Race numbers must be collected at the time stated in the championships Program. Riders' licences and passports must be submitted to the commissaires panel. The race number for the team relay shall be given the morning of the event in accordance with the instructions given by the commissaires panel.
- 1.3.076 A rider shall ensure that their identification number is visible and legible at all times. The identification number shall be well fixed and may not be folded or altered.
- Please note that training will not be authorised without a number plate.

7. ACCREDITATION DELEGATION MEMBERS (EXCLUDING RIDERS)

7.1 ONLINE ACCREDITATION REQUEST

For whom?

To avoid misunderstandings, the UCI has decided to grant a maximum number of accreditations to certain families according to the list below. However, these quotas correspond to a complete team and will be adapted to the number of riders who will take part in the 2025 UCI Mountain Bike World Championships.

Category	Function	Code	NF	XCO-XCC	XCM	E-MTB XC	DHI	EDR	PUM
DELEGATION	President N.F	6.1	1						
DELEGATION	General Secr. N.F.	6.2	1						
DELEGATION	Official Delegate N.F.	6.3		2			2		
SPORTING	Team Manager	6.4		2	1	1	2	1	1
SPORTING	National Technical Director	6.5		1			1		
SPORTING	Press-Officer	6.10		1			1		
SPORTING	Interpreter	6.11		1			1		
SPORTING	Assistant Team Manager	6.13		1	1	1	1	1	1
DELEGATION	Accompanying Official Delegation	6.14		2			2		
SPORTING	Coach	6.6		x	x	x	x	x	x
SPORTING	Doctor	6.7		x	x	x	x	x	x
SPORTING	Mechanic	6.8		x	x	x	x	x	x
SPORTING	Paramedical Assistant	6.9		x	x	x	x	x	x
DELEGATION	Accompanying Sport Delegation	6.15		x	x	x	x	x	x
		Total		20	6	6	20	6	6

Function with a X – total quota of accreditations to be spread within those functions

Note that there will be no cluster but a quota of accreditation per discipline.

When?

The system will open on the:

Monday 11 August 2025, 12:00 CET

The system will close on the:

Thursday 21 August 2025, 12:00 CET

How?

- Link: [GYE \(getyourevent.online\)](https://getyourevent.online)
- Access: personal login and password of each national federation.

7.2 ACCREDITATIONS PICK-UP

Where and when?

Monthey: Casa Nova, Av. du Théâtre 2, 1870 Monthey

Friday August 29th 2025	09h00–18h00 <i>UCI MTB World Series Teams and UCI MTB Teams can only access from 12h00 onwards</i>
Saturday August 30th 2025	09h00–18h00 <i>UCI MTB World Series Teams and UCI MTB Teams can only access from 12h00 onwards</i>
Sunday August 31st 2025	09h00–18h00 <i>UCI MTB World Series Teams and UCI MTB Teams can only access from 12h00 onwards</i>
Monday September 1st 2025	09h00–18h00 <i>UCI MTB World Series Teams and UCI MTB Teams can only access from 12h00 onwards</i>
Tuesday September 2nd 2025	09h00–18h00 <i>UCI MTB World Series Teams and UCI MTB Teams can only access from 12h00 onwards</i>
Wednesday September 3rd 2025	09h00–18h00 <i>UCI MTB World Series Teams and UCI MTB Teams can only access from 12h00 onwards</i>
Thursday September 4th 2025	09h00–18h00 <i>UCI MTB World Series Teams and UCI MTB Teams can only access from 12h00 onwards</i>
Friday September 5th 2025	09h00–18h00 <i>UCI MTB World Series Teams and UCI MTB Teams can only access from 12h00 onwards</i>
Saturday September 6th 2025	09h00–18h00 <i>UCI MTB World Series Teams and UCI MTB Teams can only access from 12h00 onwards</i>

Crans-Montana: Curling hall of the Patinoire d'Ycoor, Rte du Rawyl 56, 3963 Crans-Montana

Sunday September 7th 2025	12h00–18h00 <i>UCI MTB World Series Teams and UCI MTB Teams can only access from 15h00 onwards</i>
Monday September 8th 2025	09h00–18h00 <i>UCI MTB World Series Teams and UCI MTB Teams can only access from 12h00 onwards</i>
Tuesday September 9th 2025	09h00–18h00 <i>UCI MTB World Series Teams and UCI MTB Teams can only access from 12h00 onwards</i>
Wednesday September 10th 2025	09h00–15h00 <i>UCI MTB World Series Teams and UCI MTB Teams can only access from 12h00 onwards</i>
Thursday September 11th 2025	08h30–16h00 <i>UCI MTB World Series Teams and UCI MTB Teams can only access from 12h00 onwards</i>
Friday September 12th 2025	09h00–16h00 <i>UCI MTB World Series Teams and UCI MTB Teams can only access from 12h00 onwards</i>

Saturday September 13th 2025

09h00–16h00

UCI MTB World Series Teams and UCI MTB Teams can only access from 12h00 onwards

Sunday September 14th 2025

09h00–12h00

Remark

- The accreditation pick-up for a rider cannot be considered as a confirmation of his participation. All national federations - by an appointed team manager only - have to show up at the time of the riders' confirmation to ensure the participation of their riders.

8. START ORDER – START PROCEDURES

8.1 START ORDER

9.2.038

The start order is determined as follows:

XCO Men Elite, XCO Women Elite, XCC Men Elite, and XCC Women Elite

1. As per the last published UCI XCO individual ranking.
2. Place 33rd to 40th of the start order will be allocated to riders ranked in below rankings, unless they are listed on the start order between the place 1st to 32nd according to point 1 and 2 above:

- top 10 of the UCI cyclo-cross individual ranking
- top 20 of the UCI road individual world ranking

The place 33rd to 40th will be allocated following the rank of each rider, whatever the ranking: UCI cyclo-cross or UCI road world ranking. If two or three riders have the same ranking, they will be placed by drawing lots.

3. As per the last published UCI XCO individual ranking.
4. Unclassified riders: by nations in rotation (*).

XCO Men under 23, XCO Women under 23, XCC Men under 23 and XCC Women under 23

1. As per the last published UCI XCO individual ranking.
2. Unclassified riders: by nations in rotation (*).

XCO Men Junior, XCO Women Junior

1. As per the last published UCI XCO junior individual ranking.
2. Unclassified riders: by nations in rotation (*).

DHI Men Elite, DHI Women Elite

For the qualifying round and the final:

1. Unclassified riders: by nations in rotation (*).
2. As per the last published UCI DHI individual ranking. The best rider starting last

DHI Men Junior, DHI Women Junior

For the qualifying round and the final:

1. Unclassified riders: by nations in rotation (*).
2. As per the last published UCI DHI individual ranking. The best rider starting last.

For all DHI events (Men Elite, Women Elite, Men Junior and Women Junior), riders are required to ride in the qualifying round. The number of riders qualifying for the final are as follows:

- Men Elite: top 80 riders in the qualifying round
- Women Elite: top 40 riders in the qualifying round
- Men Junior: top 60 riders in the qualifying round
- Women Junior: top 20 riders in the qualifying round

(*) The start order of the riders within the team must be confirmed by the national federations during the riders' confirmation. Taking each nation in turn on the basis of the classification by nation of the concerned category from the most recent mountain bike world championships, a place is allocated to the next rider in sequence. Unclassified nations take, on the basis of the same rotation system, the next places in an order determined by drawing lots.

E-MTB Men, E-MTB Women

The start order for E-MTB shall be defined yearly

1. Top 5 of the 2025 UCI E-Mountain Bike World Cup.
2. Top 5 of the 2024 UCI E-Mountain Bike World Championships.
3. In alternation, the best ranked rider of the 2025 UCI E-Mountain Bike World Cup and the best ranked rider of the 2024 UCI E-Mountain Bike World Championships.
4. Unclassified riders: by nations in rotation.

Enduro/E-Enduro Men Elite, Enduro/E-Enduro Women Elite, Enduro/E-Enduro Men Junior, Enduro/E-Enduro Women Junior

The start order for Enduro and E-Enduro shall be defined yearly.

Enduro

1. As per the Enduro overall rankings. The best rider starting last.
2. Unclassified riders: by nations in rotation

E-Enduro

1. As per the Enduro overall rankings. The best rider starting last.
2. Unclassified riders: by nations in rotation

GROUP A

Racers in the Women Elite (top 15 of the current Enduro overall ranking) and Men Elite (top 30 of the current Enduro overall ranking), as well as selected riders will be collectively referred to as Group A. All other Elite riders will collectively be referred to as Group B.

START ORDER

- Men Junior
- Women Junior
- Group B Women Elite
- Group B Men Elite
- Group A Women Elite
- Group A Men Elite

Group A riders will be re-seeded for the final stage of the course.

9.2.040 **Marathon**

The start order for riders in the UCI Mountain Bike Marathon World Championships shall be as follows:

- the reigning UCI XCM World Champion
- the reigning UCI XCO Elite and under 23 World Champions
- the reigning UCI XCC Elite and under 23 World Champions
- the reigning Olympic mountain bike champion
- the latest UCI marathon ranking
- the latest UCI XCO individual ranking
- by drawing lots for the other riders.

8.2 XCO, XCC, XCR AND E-MTB START PROCEDURE

4.1.030 For Olympic Games, world championships, world cup, continental championships events and hors class events the organiser must make provision for a call-up area which is sufficiently large for riders to warm up in, close to the start zone. Other organisers are also encouraged to install a call-up area.

4.1.031 In mass start events, riders must be called to the start no earlier than 20 minutes before the scheduled start of the race. This period can be reduced where the number of riders allows.

The riders line up in the order in which they are to be called to the start line. The number of riders on each line is decided by the president of the commissaires' panel and supervised by a commissaire. The rider himself decides which position on the line to take.

Once the riders are lined up, warm-up (by rollers, turbo trainer, etc.) is excluded inside or outside the start area.

The start is given by the commissaire using the following procedure: warnings 3, 2, 1 minutes and 30 seconds before the start, then a final announcement that the start is given within the next 15 seconds.

A starting pistol or start lights, if none is available, a whistle, is used to give the start.

4.1.033 The start briefing is given in at least one of the official languages of the UCI.

8.3 DHI START PROCEDURE

- A **Downhill Qualification for Junior** will take place on 05 September 2025 at 11:00 and **for Elite** on 06 September 2025 at 15:15.
- All riders are required to ride in the qualification round.
- DHI start order is as per Article 9.2.038.

9. TECHNICAL ASSISTANCE

4.2.044 No rider may turn back on the course to reach a feed/technical assistance zone. Any rider doing so is disqualified. Only within the feed/technical assistance zone itself, a rider may turn back without obstructing other competitors.

- 4.2.045 Technical assistance during a race is permitted subject to the conditions below.
- 4.2.046 Authorised technical assistance during a race consists of repairs to or the replacement of any part of the bicycle other than the frame. Bike changes are not permitted, and the rider must cross the finish line with the same handlebar number plate that he had at the start.
For E-MTB battery changes is not permitted.
- 4.2.047 Technical assistance can only be given in the feed/technical assistance zones.
- 4.2.048 Spare equipment and tools for repairs must be kept in these zones. Repairs and equipment changes can be carried out by the rider himself or with the help of a team-mate, team mechanic or neutral technical assistance.
- 4.2.049 In addition to technical assistance in feed zones, technical assistance is permitted outside these zones only between riders who are members of the same UCI MTB WORLD SERIES TEAM, UCI MTB TEAM or of the same national team. For the world championships, technical assistance is permitted only between riders of the same national team.
- Riders may carry tools and spare parts provided that these do not involve any danger to the rider himself or the other competitors.

10. TEAM MANAGERS' MEETING

No team managers' meeting will be held. All information will be distributed by communique.

11. RULES

- 9.2.001 It is the National Federations who select riders to participate in World Championships.
- Riders classified as "refugee" pursuant to article 1.1.033 shall register directly with the UCI. The UCI may authorize riders classified as "refugee" in addition to the quotas provided for in the UCI Regulations and qualification regulations, without prejudice to specific eligibility requirements that may be determined.
- 9.2.003 National Federations shall enter with the UCI via its website.
- 9.2.004 The enrolment of the federations' riders shall reach the UCI at the latest within the following deadlines:
- For 2025, the deadline is 21 August, 12:00 CET
- 9.2.005 Save in the case of an act of God, a National Federation that has enrolled by returning the enrolment form for a World Championships and that does not participate shall be liable to a fine of CHF 500 to CHF 2,000.
- 9.2.008 Unless prevented by an act of God, a rider once announced as taking the start and who fails to present, shall be liable to a fine of CHF 500 to CHF 5,000.

An injury or sickness shall be recognised as an act of God only if the rider is declared incapable of taking the start by the UCI official doctor.

- 9.2.009 In all individual specialities, the outgoing World Champion may take part in addition to the number of starters that the National Federation of such Champions may enter under the qualification regulations.

The same principle is applicable for the Olympic Champion on the occasion of the first World Championship following Olympic Games or, for the mountain bike, the next two mountain bike World Championships.

For the Continental Champion, this facility is limited to the first World Championships following the awarding of the title of Continental Champion.

- 1.3.031 Wearing a rigid safety helmet shall be mandatory during competitions and official training sessions in all disciplines except indoor cycling and BMX Freestyle Flatland.
- 4.1.038 The use of radio links or other remote means of communication with riders is forbidden , except at UCI World Cups and subject to UCI authorisation.

12. ADDITIONAL RULES / BIKE CHECKS PROCEDURE FOR E-MTB XC and E-EDR

12.1 ADDITIONAL RULES

- 4.8.001 Only EPACs, in the sense of article 1.3.010bis, are authorized for use in E-Mountain Bike events.

Battery

- 4.8.005 Riders can only use the battery fitted on their bike at the start and cannot carry an additional battery during the competition.

12.2 BIKE CHECKS PROCEDURE

In order to ensure races respect UCI regulations, only bikes with drive units that comply to the conditions set out in article 1.3.010bis, PART 1 General Organization of Cycling as a Sport, and registered via the UCI EPAC's Drive Unit Approval Process are accepted.

[Riders' registration – E-Bikes information form](#)

Each participant must complete the form provided in order to be allowed to take part in the UCI World Championships: <https://forms.gle/2sUvbW11yES892bZ9>

[Pre-race bike inspection](#)

Pre-race inspections will be conducted by order of approved Drive Unit and rider surname. The final inspection order will be issued via official communiqué. The presence of the rider or their representative is mandatory for each inspection.

29 August from 14h00 – close to the start/finish area for E-Enduro in Fiesch.

03 September from 11h00 – close to the start/finish area for E-XC in Bellwald.

Post race bike inspection

Riders selected for post-race bike inspections will be informed by commissaires in the finish zone. Riders are responsible for immediate presentation of their bike to the closed park in the finish zone.

Attention



Missing rider registration questionnaires, non-compliance to the referenced UCI Regulations and/or failure to attend bike inspections will lead to an immediate participation refusal or disqualification.



E-bikes batteries are not accepted in regular commercial flights. Be aware of these transport constraints while planning your trip to avoid any issue.

13. ADDITIONAL RULES FOR EDR AND E-EDR

13.1 ADDITIONAL RULES

Additional rules for Enduro and E-Enduro can be found in the Enduro and E-Enduro technical guide published on the [UCI website](#).

14. RACE CLOTHING

National federations shall submit to the commissaires' panel of events as specified in art. 1.3.059, a sample of their national team clothing for validation. The design, colour, place and size of the advertising spaces of the validated equipment must be identical for all athletes participating to the applicable events.

We encourage you to present to the UCI your national apparels before sending them for final production.

The apparel of the riders of a national team must always be identical to the last sample submitted.

Riders of the same national team must wear identical racing shorts during the same event, except for advertising space included in a lateral band 9 cm wide, which may differ from one rider to another. This means that national federations must also provide their riders with national racing shorts.

The team managers must therefore present the national jersey and shorts to the commissaires' panel at the riders confirmation.

The national jersey is mandatory for all riders and for all competition formats.

- 1.3.057 Advertising matter, as detailed in the "UCI jersey visual guidelines" brochure published on the UCI website, shall be used at the national federation discretion - [UCI Jerseys Visual Guidelines](#).
Advertising matter on jersey and shorts may vary from one rider to another. The design of the jersey and shorts may vary from one category of rider to another.

Advertising on protective leggings worn for downhill mountain bike, trials and BMX events is not subject to the advertising restrictions on shorts.

Additionally, the rider's name may appear on the back of the jersey.

The above measures also apply to other items of clothing worn during competition (rain jackets, etc.).

DHI Race Clothing

4.3.011 Jersey

The jersey shall be a long-sleeved shirt whose sleeves extend down to the rider's wrists. Jerseys used in downhill events should be of a type specifically designed and sold for use in BMX Racing or Mountain Bike downhill events. Jerseys designed for road cycling, skinsuits, or one-piece suits comprising the jersey and the pants/shorts are not permitted for use in downhill events. The jersey must be either close fitting around the waist or must be tucked into the pants before the start to not cause interference.

Pants

Long pants or short pants combined with suitable knee and shin protection are authorised. Such long or short pants should be of a type that is specifically designed and sold for use in BMX Racing or Mountain Bike downhill events. Long pants of the type described above must be of one-piece construction and made of tear-resistant material. They should cover the entire length of both legs until just above the shoe or ankle. Short pants of the type described above must be of one-piece construction and made of tear-resistant material. They should be worn together with suitable leg protection, that covers the entire knee and the entire shin until just above the ankle.

4.3.012 A full-face helmet must be worn properly both when racing and when training on the course. The helmet must be fitted with a peak. Open-face helmets may not be worn.

As per the rules in Switzerland, the following protections are mandatory:

- back and knee protectors made of rigid materials;
- full finger gloves.

15. OFFICIAL CEREMONIES

The following points apply to the official ceremonies:

9.1.044 Within 10 minutes following the end of each speciality (unless otherwise provided and duly recorded in an official communiqué), the World Champion, or the world champion team of the team time trial, as well as the second and the third placed riders shall be ready for the official ceremony that shall be conducted under the responsibility of the President of the Commissaires' Panel.

9.1.046 Riders shall appear in racing attire, wearing their national jerseys but bare-headed and without headband or glasses, until they leave the official ceremony enclosure.

- 9.1.050 A World Champion may not wear the jersey identifying his title and bearing the regulation advertisement of his main sponsor(s) until, at earliest, the day following that on which he received it.
- 9.1.051 Any infringement of the provisions of articles 9.1.044 to 9.1.050 above shall be punished by a fine of CHF 2,000 to CHF 10,000 minimum. A higher fine may be imposed depending on the advantage derived from the offence.

16. PRIZE MONEY

Ranking / Classement	MEN & WOMEN / HOMMES & FEMMES						TEAM RELAY
	ELITE		U23		JUNIORS / JUNIOR		
	XCO	XCC & XCM & DHI & E-MTB & EDR & EDR-E & SNO	XCO	XCC	XCO	DHI	
1st / 1er	8 000 €	5 000 €	4 000 €	2 500 €	2 000 €	1 250 €	15 000 €
2nd / 2ème	4 000 €	2 500 €	2 000 €	1 250 €	1 000 €	675 €	7 500 €
3rd / 3ème	2 000 €	1 250 €	1 000 €	675 €	500 €	340 €	3 750 €
Total	14 000 €	8 750 €	7 000 €	4 425 €	3 500 €	2 265 €	26 250 €

Prize money will be paid by the UCI to the national federation who is then responsible to transfer the money to the riders.

There is no prize money for Pump Track competitions.

17. TEAM SPACE BOOKING FORM

The Team space booking forms are available with the organiser directly:

https://form.jotform.com/243251921904352?utm_medium=email&hsenc=p2ANqtz--5g9go1d2FmdrVqfID7qB8QCtVY0H3UevJuhJnltfa8gV4gQ5s6wPT76s9NNF2RjLH78YsROooc3karmZQd2SoBEjq-azpNA0yOjzwrB3TNpqp0&hsmi=100047792&utm_content=100047792&utm_source=hs_email

As a reminder for National Federations attending the Cross-country Short Track in Zermatt, the village is car free. The organiser is offering a material transportation for National Federations as per the information published on their website:

[Microsoft Word - Factsheet Team-Logistik UCI Mountainbike WM Zermatt.docx](#)

18. OFFICIALS

UCI Commissaires panel

President	PRONOVOST Nathalie	CAN
Chief Commissaire Assistant	COLENBRANDER Miranda	NED
Secretary	NUNINGER Thierry	FRA
Secretary	TOSI Fulvia	ITA
Member	WEBER Matthias	SUI
Member	CHRISTMAS Jeremy	NZL
Member	TAM Csilla	HUN

Member	TOSTI Diego	ITA
Member	EVANS Justin	USA
Technical Commissaire	WALLS Adrian	GBR
UCI Technical Delegate – XC	WABEL Beat	SUI
UCI Technical Delegate – EDR/E-EDR/E-MTB	PAGE Kieran	FRA
UCI Technical Delegate – DHI	BALAUD Alex	FRA

19. USEFUL ADDRESSES

If you need further information about the 2025 UCI Mountain Bike World Championships, please contact the following people :

UCI

Union Cycliste Internationale
Allée Ferdi Kübler 12
1860 Aigle, Switzerland
Phone +41 24 468 58 11
Website: www.uci.ch

Peter Van Den Abeele
Sports Director

Annelyse Torrent Day
Off-Road Manager
annelyse.torrentday@uci.ch

Caroline Constantin
Off-Road Coordinator
caroline.constantin@uci.ch

Simon Burney
Mountain Bike Consultant
simon.burney@uci.ch

ORGANISING COMMITTEE

Association CM MTB UCI Valais 2025
1950 Sion
info@valais2025.ch

National Federations
Federations@valais2025.ch

20. UCI ATHLETES' COMMISSION VOTE

The UCI Athletes' Commission comprises 20 elected members, including 4 members representing Mountain Bike (1 Man and 1 Woman for Cross-country, 1 Man and 1 Woman for Downhill). Commission members are elected by their peers every 4 years.



The vote for the members representing Mountain Bike will be held during the 2025 UCI Mountain Bike World Championships, in Valais, Switzerland.

The UCI press release of 3 December 2024 ([Renewal of the UCI Athletes' Commission for the 2025-2029 period | UCI](#)) provided details of the Athletes Commission, including Athlete eligibility to stand as a candidate for election.

Details for candidates and voters is available here:
[2024 Terms of reference Athletes Commission 2024 EN.pdf](#)

Candidates must present their CV to the UCI before 20 August 2025, including their full contact details to the UCI using the following email address: athletes.commission@uci.ch

A list of candidates will be published on the UCI website by 25 August 2025, with details also available on site at the voting station.

Athletes taking part in the Elite and Under 23 races of the 2025 UCI Mountain Bike World Championships are eligible to vote.

The voting station location and times are as follows:

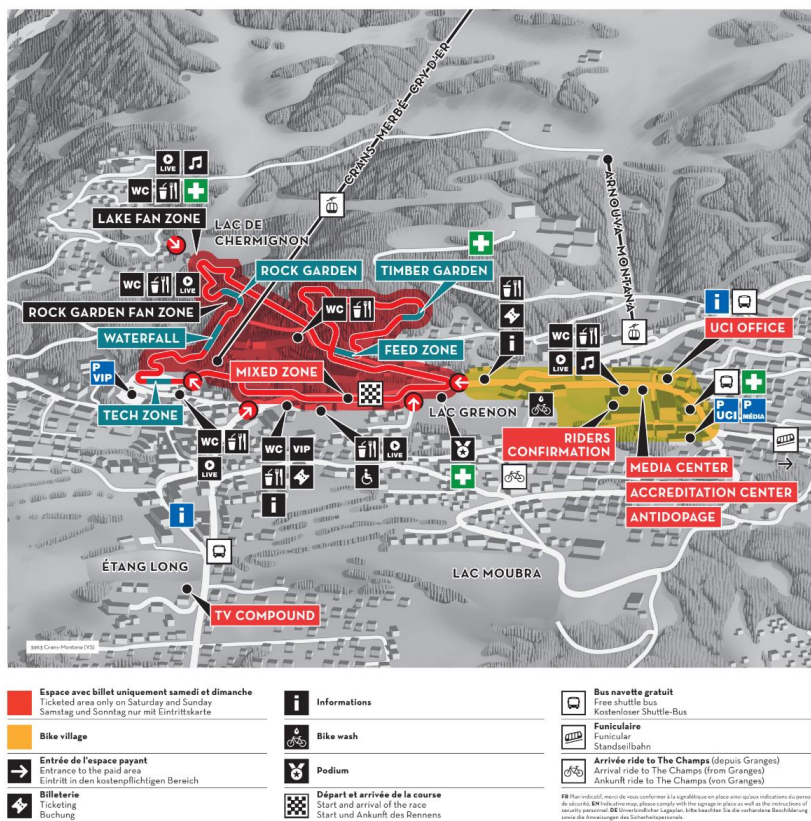
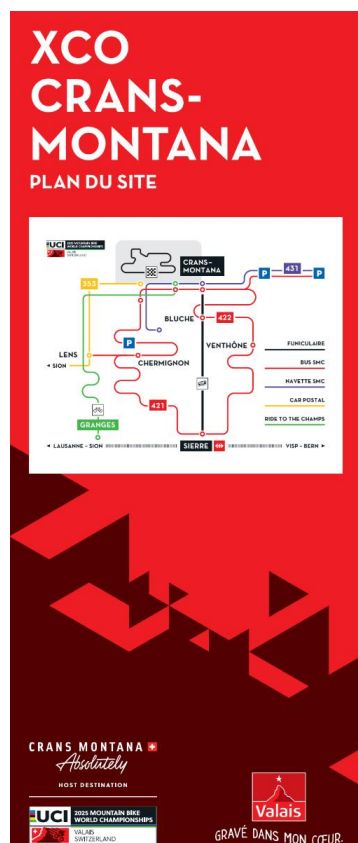
- Cross-country: Friday 12.09.2025, 10h00-12h00, in the finish area
- Downhill: Friday 05.09.2025, 14h30-16h30, in the finish area

If candidates or athletes have any questions, these can be directed to: athletes.commission@uci.ch.

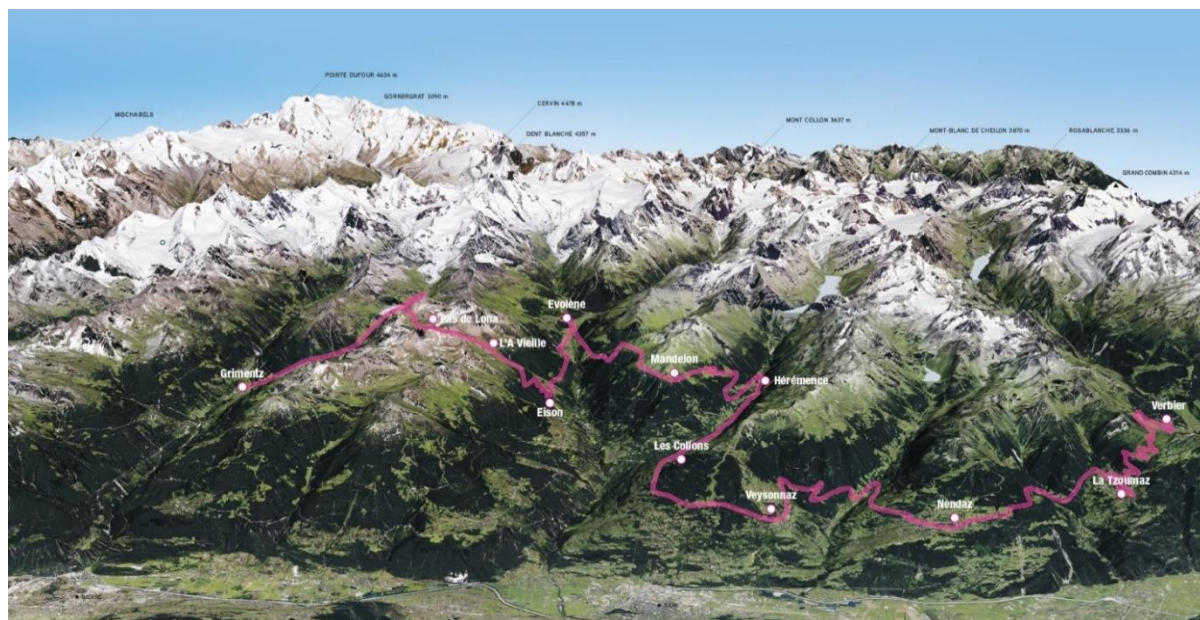
21. GENERAL COMPETITION MAP



22. VENUE MAP – XCO/XCR



23. VENUE MAP – XCM



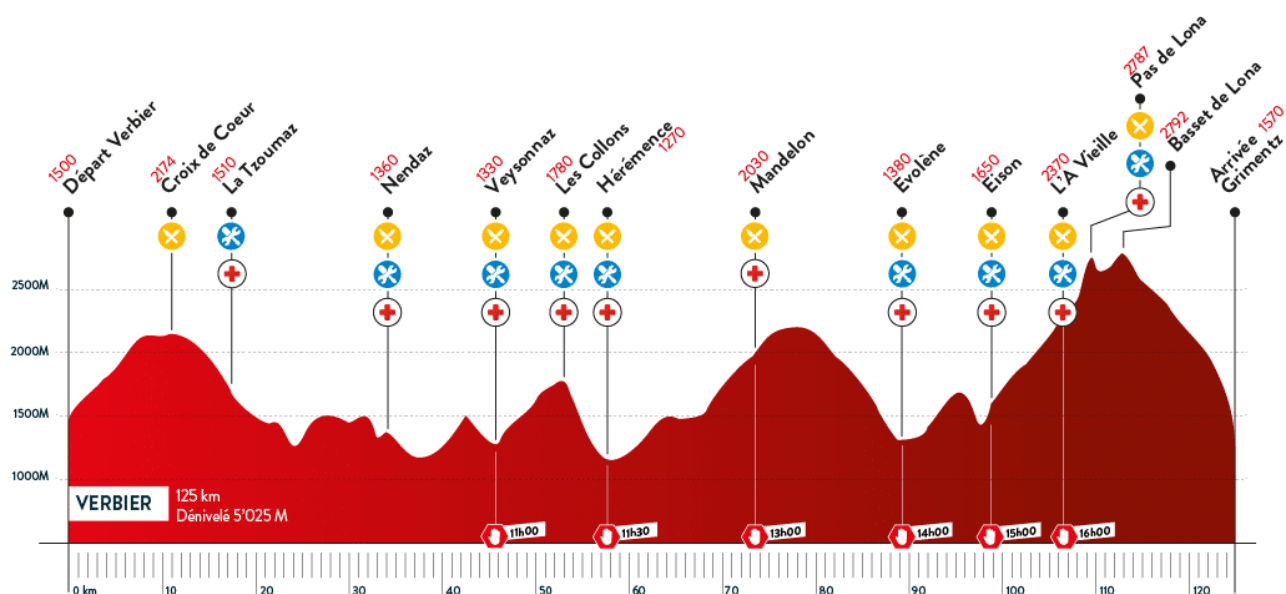


MARATHON (XCM) GRIMENTZ

PLAN DU SITE

	Ligne d'arrivée Ziellinie Finish Line
	Pointe de secours Sachstützen First aid station
	Informations Infotank Information
	Animations Veranstaltungen Animations
	Boissons et nourriture Getränke und Essen Food and Drink
	Douches Duschen Showers
	Station de longe Werkstation Work station
	Accès pour personnes à mobilité réduite Zugang für Personen mit eingeschränkter Mobilität Access for people with reduced mobility
	Entrée Libre Freier Eintritt Free entry

23.1 RACE INFORMATION – XCM



GPX link: [Verbier-Grimentz 125km - Grand Raid BCVS](#)


Feed/Technical Assistance Zone 1

Haute – Nendaz - KM 34

Haute-Nendaz gondola : 46.1803186, 7.2917924

Parking next to the Restaurant Grenier



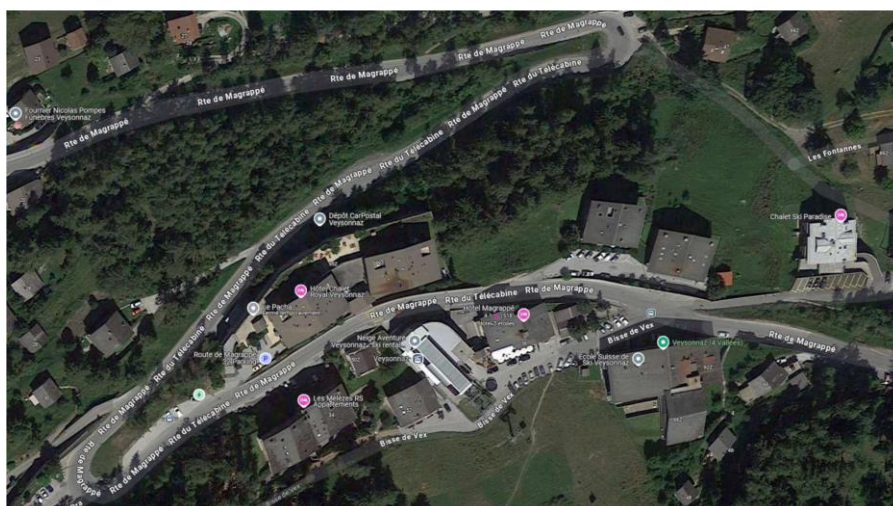
 By Car	Verbier – Haute-Nendaz Via Sion	70 min	55 km
--	---------------------------------	--------	-------

Feed/Technical Assistance Zone 2

Veysonnaz – km 46

Rte de Magrappé : 46.1957604, 7.3445984

Parking Chalet Royal - 46.195926322333925, 7.342215548555816



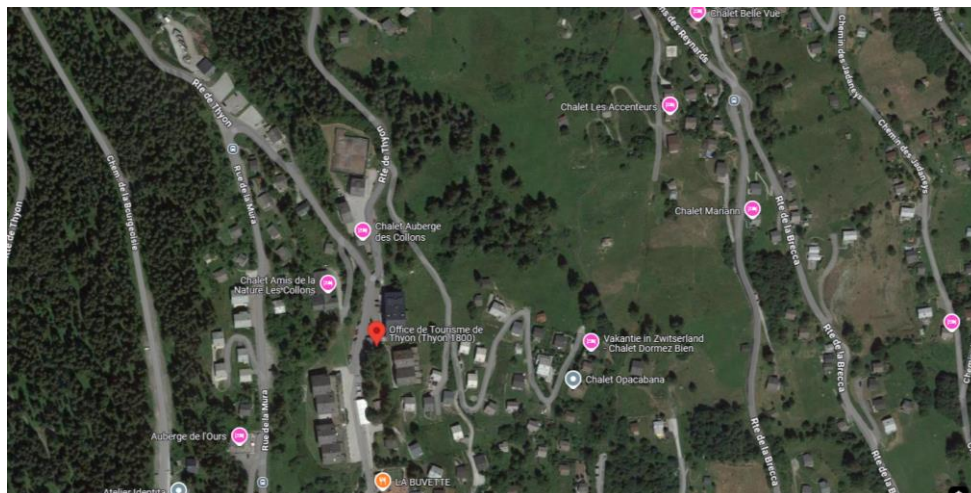
 By Car	Haute-Nendaz - Veysonnaz	15 min	10 km
--	--------------------------	--------	-------


Feed/Technical Assistance Zone 3

Les Collons - KM 53 :

Les Collons, Rue des Collons : 46.1848392, 7.3860352

Rte de Thyon - 46.187655116867056, 7.384674271163804



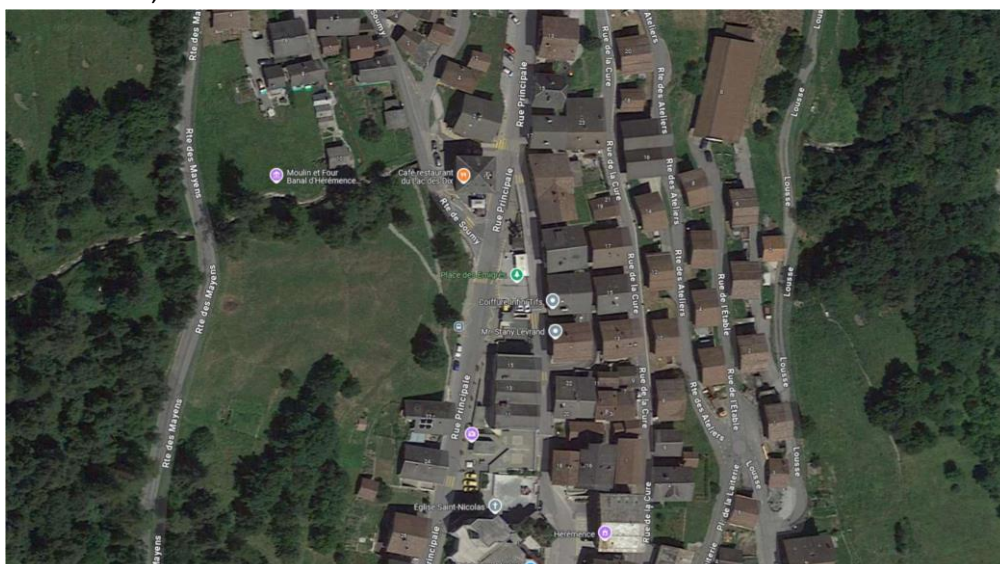
	By Car	Veysonnaz – Les Collons	25 min	15 km
--	--------	-------------------------	--------	-------


Feed/Technical Assistance Zone 4

Hérémence - km 58

Rue de L'Eglise : 46.1813268, 7.4047218

Parking Team UCI : Communal official parking (don't cross the race) continued via Vex
46.21229872539954, 7.431133224803193



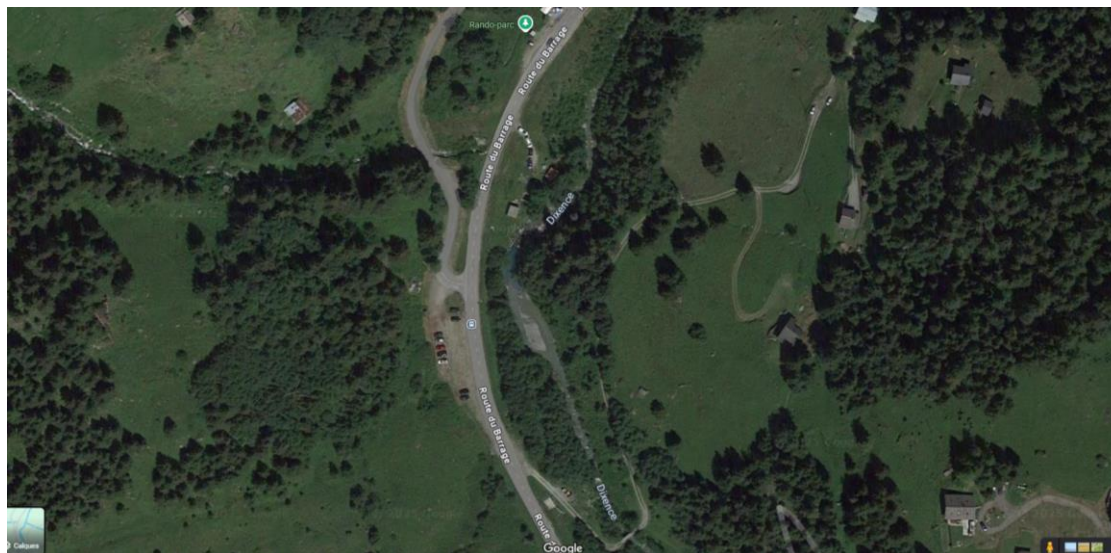
	By Car	Les Collons - Hérémence	20 min	14 km
---	--------	-------------------------	--------	-------


Feed/Technical Assistance Zone 5

Hérémence – Praperoz

Rte du Barrage– 1987 Hérémence : 46.12947789858118, 7.390731328325906

Parking : 46.127348508159216, 7.389156569079367



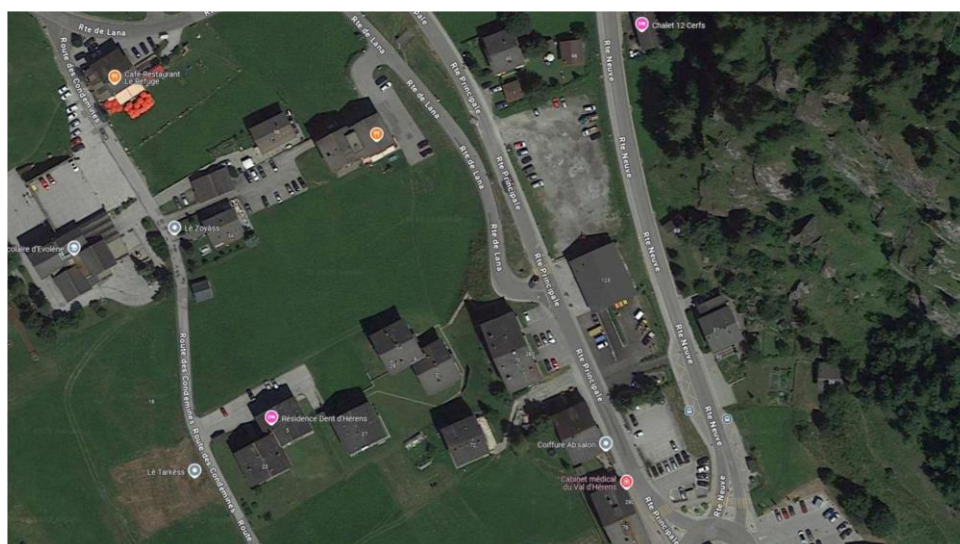
	By Car	Hérémence - Praperoz	10 min	6 km
---	--------	----------------------	--------	------


Feed/Technical Assistance Zone 6

Evolène - Km 87

Rte de Lana : 46.1101123, 7,4990842

Parking between start of rte principale and shop COOP



	By Car	Hérémence - Evolène	20 min	20 km
---	--------	---------------------	--------	-------


Feed/Technical Assistance Zone 7

Eison – KM 99

Feedzone: 46.1537105, 7.4667750

Parking Eison village entrance



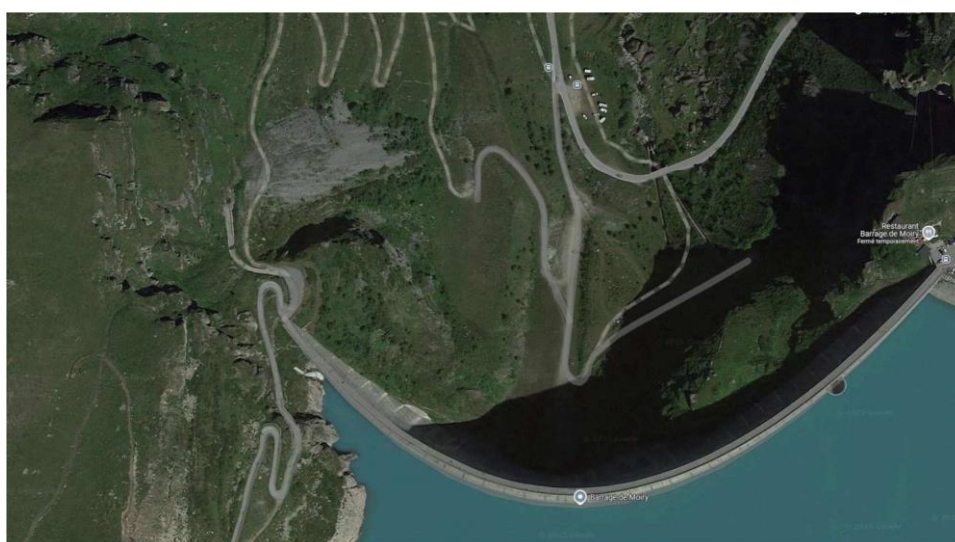
	By Car	Evolène - Eison	14km	20 min
--	--------	-----------------	------	--------


Feed/Technical Assistance Zone 8

Below the Moiry dam – KM 120

Barrage de Moiry : 46.1385671, 7.5701671


Parking : 46.1385671, 7.5701671



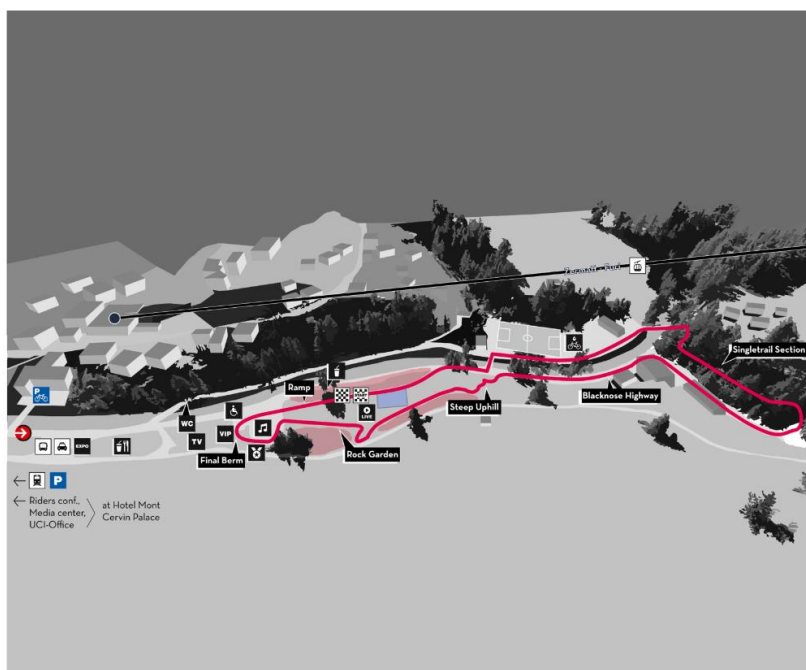
	By Car	Eison – Moiry dam	66 km	1h30
---	--------	-------------------	-------	------









Grimentz – Finish Area

Parking: Grimentz 46.1742919, 7.5732172

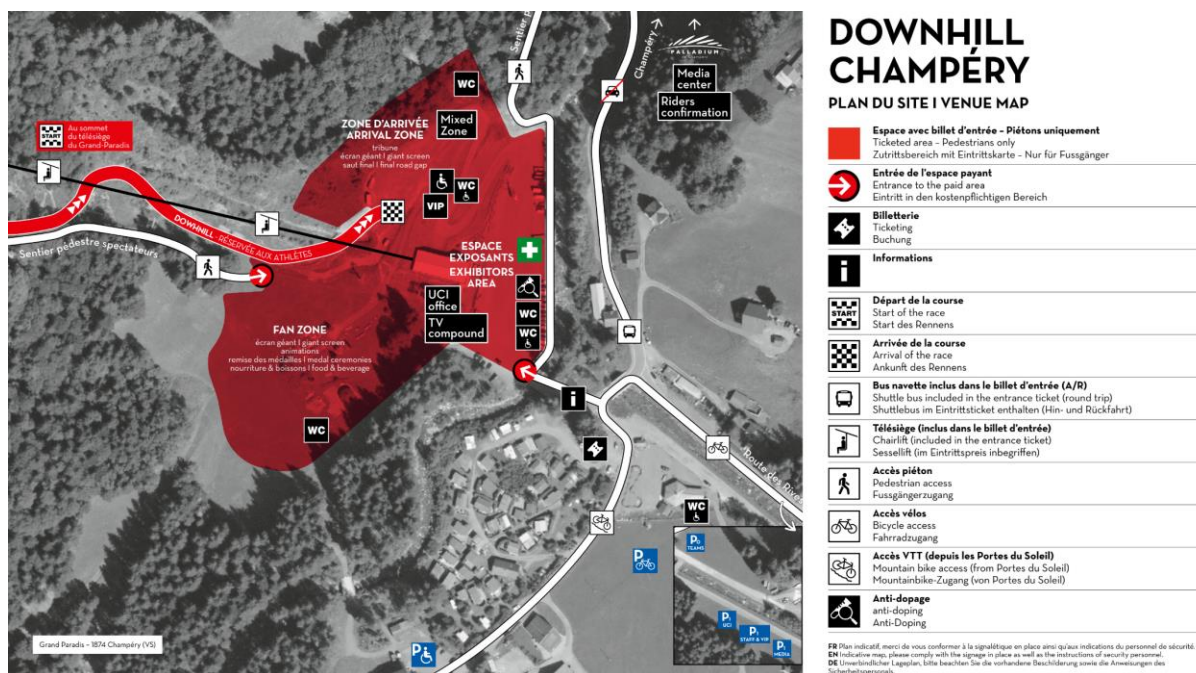
 By Car	Moiry dam - Grimentz	15 min	7 km
--	----------------------	--------	------

24. VENUE MAP – XCC

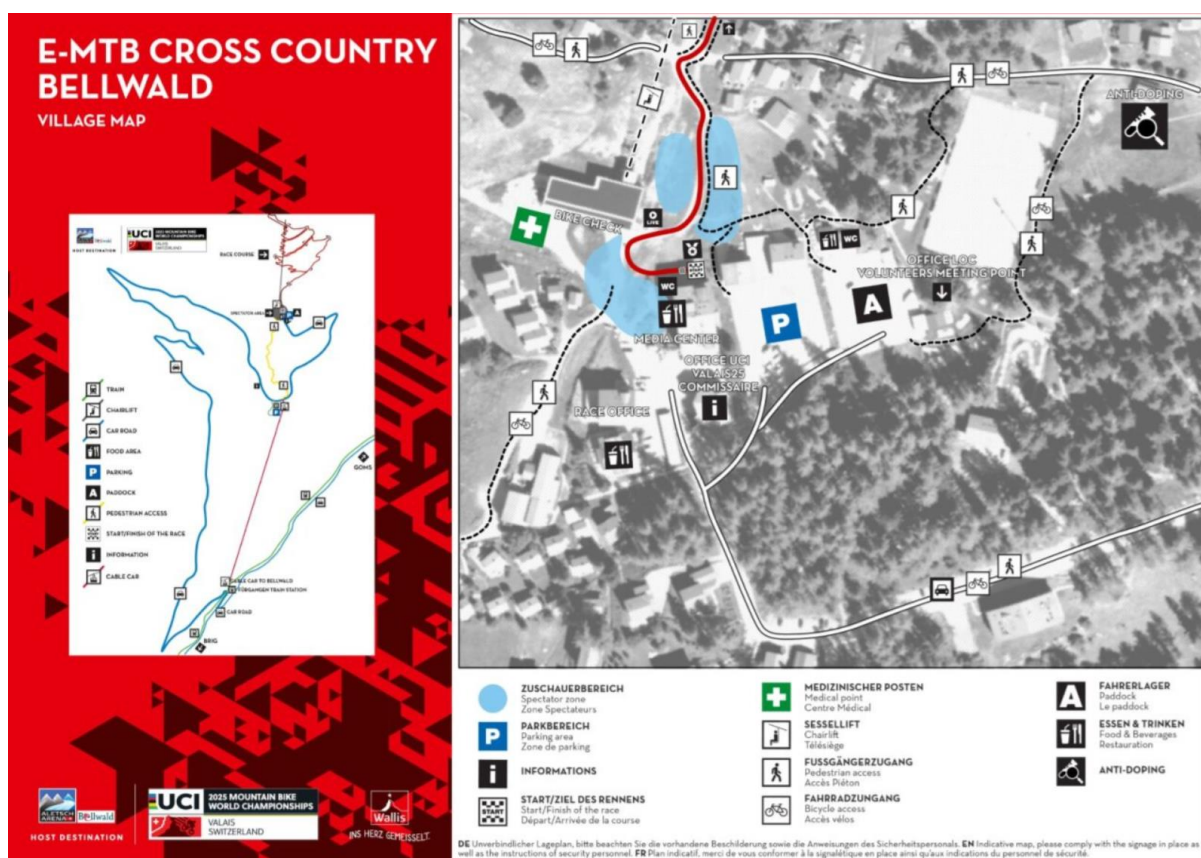


 15 Minuten Fussweg/15 minutes walk	 Bahnhof Täsch/Trainstation Täsch
 Taxi Haltestelle/Taxi stop	 Cross-Country Short Track (XCC)
 Fahrt regelmässig zum Bahnhof/Runs regularly towards the station	 Zuschauerzone/Spectator area
 Eingang Renngelände/Racing venue entrance	 Mixed Zone

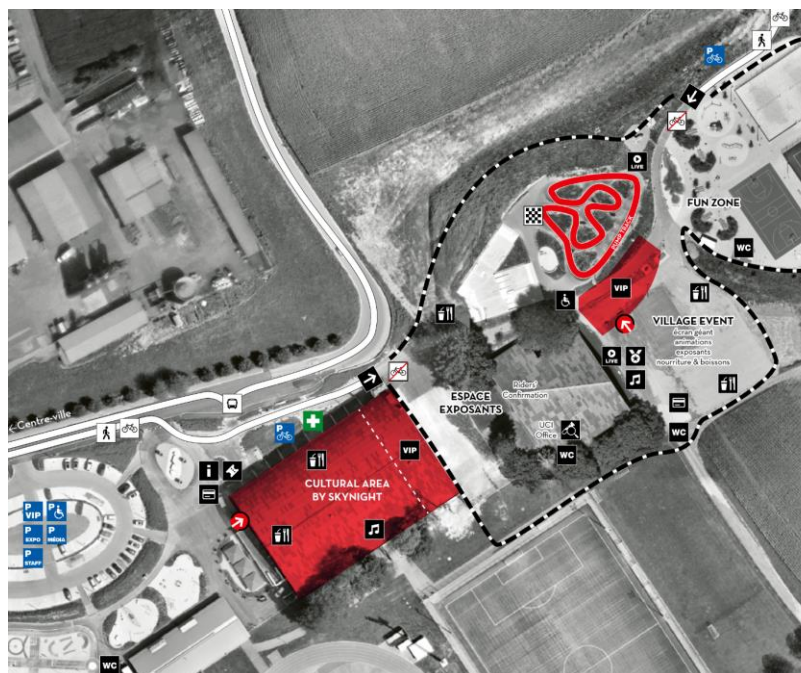
25. VENUE MAP – DHI



26. VENUE MAP – E-MTB



27. VENUE MAP – PUM



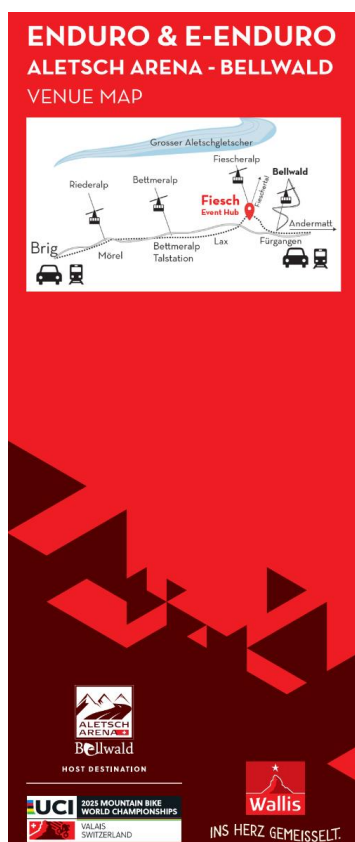
PUMP TRACK MONTHÉY

PLAN DU SITE

	Espace avec billet d'entrée piétons uniquement Space with pedestrian entrance ticket only Platz nur mit Fussgänger-Eintrittskarte
	Entrée de l'espace payant Entrance to the paid area Eintritt in den kostenpflichtigen Bereich
	Billetterie Ticketing Buchung
	Informations
	Entrée dans la zone de l'événement Entrance to the event area Eintritt in den Veranstaltungsbereich
	scènes Stages Bühnen
	Caisse bracelets cashless Cashless wristband counter Cashless-Armband-Ausgabe
	Bus navette Shuttle bus Shuttlebus
	Accès piéton Pedestrian access Fussgängerzugang
	Accès vélos Bicycle access Fahrradzugang
	Zone interdite aux vélos No bicycle zone Fahrräder verboten

FR Plan indicatif, merci de vous conformer à la signalétique en place ainsi qu'aux indications du personnel de sécurité.
EN Indicative map, please comply with the signage in place as well as the instructions of security personnel.
DE Unverbindlicher Lageplan, bitte beachten Sie die vorhandene Beschilderung sowie die Anweisungen des Sicherheitspersonals.

28. VENUE MAP – EDR/E-EDR



DE Unverbindlicher Lageplan, bitte beachten Sie die vorhandene Beschilderung sowie die Anweisungen des Sicherheitspersonals. FR Plan indicatif, merci de vous conformer à la signalétique en place ainsi qu'aux indications du personnel de sécurité. EN Indicative map, please comply with the signage in place as well as the instructions of security personnel.

PARTNERS OF THE 2025 UCI MOUNTAIN BIKE WORLD CHAMPIONSHIPS

MAIN PARTNERS

The Shimano logo is the word "SHIMANO" in a bold, blue, sans-serif font.

OFFICIAL PARTNERS

The Santini logo is the word "Santini" in a bold, black, italicized, sans-serif font.