

MULTI-FUNCTION

Features

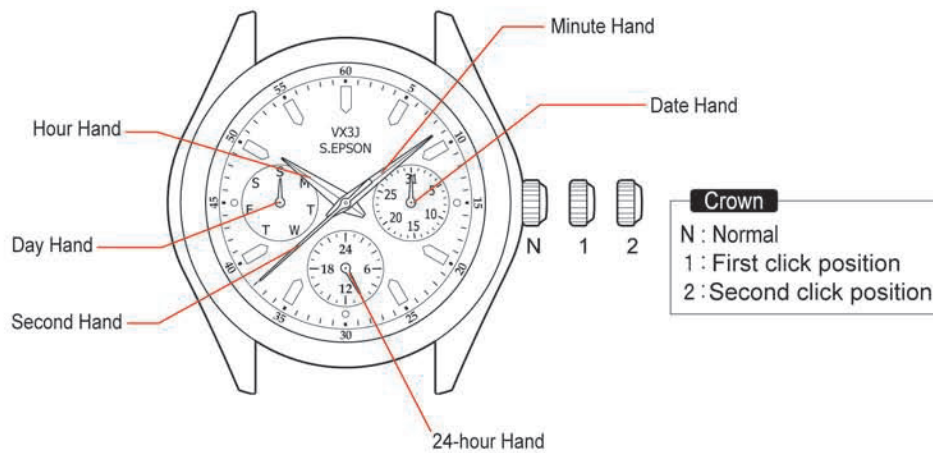
- ◆ Hour, Minute and Second Hands
- ◆ Day, Date and 24H indicators



VX3J
3H:Date, 9H:Day



VX3L
2H:Date, 10H:Day

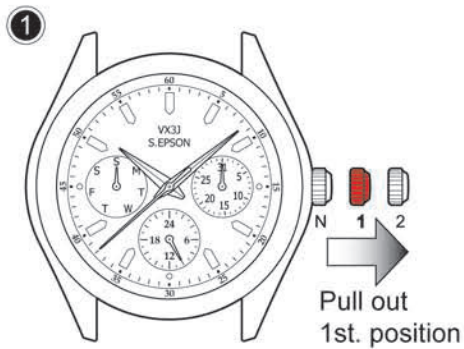


Dial positions and layout of the face might vary depending on the watch model.

Movement size	10 1/2'''
Outside Diameter	21.50 mm (12H-6H) X 21.50 mm (3H-9H)
Casing Diameter	21.50 mm (12H-6H) X 21.30 mm (3H-9H)
Height	3.05 mm (Including Battery)
Battery	SR916SW
Battery Life Approx.	3 years

- ◆ Timing of day changes
 - The date hand moves to the next between 11:00p.m. and 12:00a.m.
 - The day hand moves to the next between 2:00a.m. and 4:00a.m.

How to Set Date:

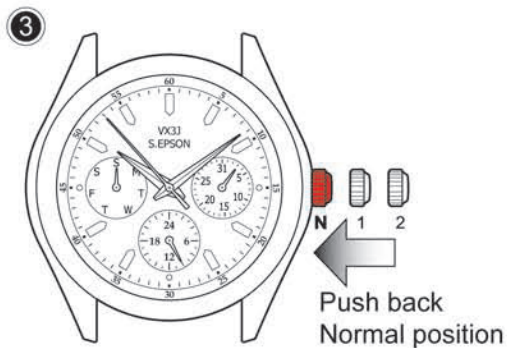


- Pull crown out to the 1st click position.



- Turn the crown clockwise to set date hand.

Note: The date hand will not move back by turning the crown counterclockwise.



- Push crown back to normal position.

◆ Advance Setting Technique

- Do not set the date hand between 9:00p.m. and 1:00a.m. Otherwise, it may not turn properly.
- While setting the date hand, check that it moves properly in one-day increments.
- It is necessary to adjust the date on the first day after a 30-day month and February.