

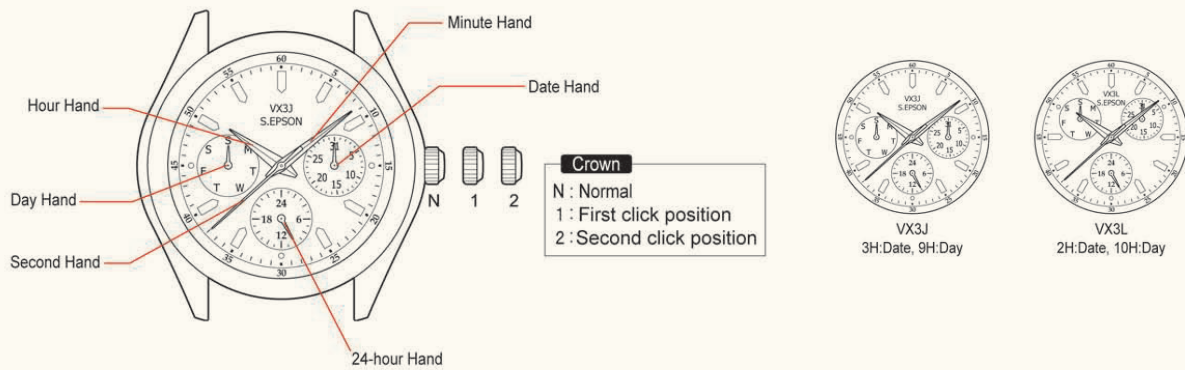
WATCH MANUAL

MICHAEL HILL

FINE JEWELLERS

MULTI-FUNCTION

A. DISPLAY AND BUTTONS

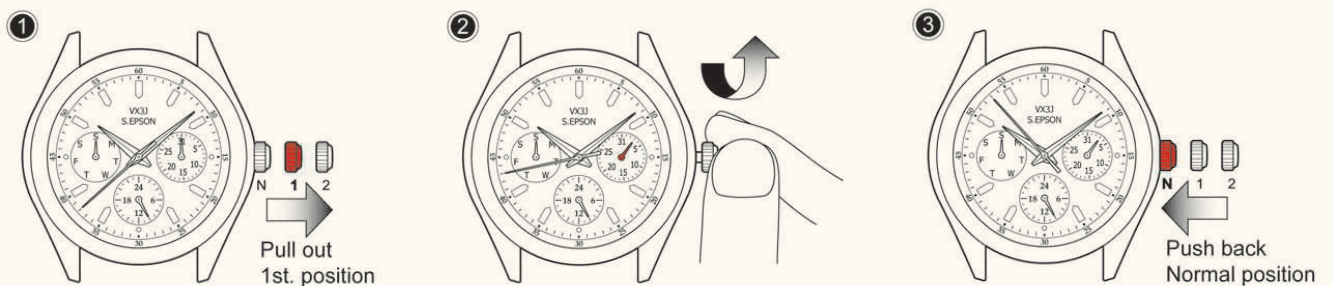


*Dial positions and layout of the face might vary depending on the watch model.

B. SETTING THE DATE

- 1 Pull the crown out to the 1st click position.
- 2 Turn the crown to set date hand.
- 3 Push the crown back to the normal position.

Do not set the date hand between 9:00pm and 1:00am. Otherwise, it may not turn properly.
While setting the date hand, check that it moves properly in one-day increments.
It is necessary to adjust the date on the first day after a 30-day month and February.



MULTI-FUNCTION

C. WARNING



WARNING





**THIS PRODUCT
CONTAINS A
BUTTON BATTERY**

AUSTRALIA
Australian Poisons Information Centre
13 11 26

NEW ZEALAND
New Zealand Poisons Information Centre
0800 764 766

CANADA
Canada Poisons Information Centre
1 844 764 7669

Dispose of used button batteries immediately.

If swallowed or placed inside any part of the body, the battery can cause serious injuries. It can cause severe or fatal injuries within two hours or less. Button batteries are hazardous. Keep batteries out of reach of children. If you think the battery may have been swallowed or placed inside any part of the body, you should contact your local Poisons Information Centre immediately for 24/7 fast, expert advice.