

## University of North Florida Soccer Stadium

Jacksonville, Florida

Client:  
University of North Florida

Total Cost:  
\$5,900,000

Meets requirements for LEED® Silver  
Certification



### Nature of Work:

The University of North Florida's (UNF) commitment to both its men's and women's programs continues with the development of the UNF Soccer Complex Stadium. The proposed two-story, approximately 11,800 gross square foot Stadium has been strategically located at the corner of South UNF Drive and North-South Street, just north of the main campus and adjacent to the existing sports fields. Once completed, the new construction will include first floor areas such as a teaming area for film review, both men's and women's locker/shower/toilet rooms, laundry room, training room, equipment rooms, both men's and women's public restrooms and official's restrooms and associated support spaces. The second floor will consist of an open lobby with kitchenette, press box, A/D and donor boxes (with bleacher seating for 16 spectators each), showers/lockers and offices for both men's and women's coaches, video rooms and private men's and women's restrooms.

The Complex will also include a practice field, competition field with stadium lighting, bleacher seating for 750 spectators, an entry plaza and ample parking for the facility, all which will be enclosed by perimeter fencing and landscape elements.

The building's facade was designed with oversized stone, composite cementitious panels resembling a metal finish and modular brick with calculated fenestrations to blend well with the existing campus fabric and allow excellent views of the surrounding features and activities. Large fabric structure overhangs were designed on the east and west sides of the building to help with sun exposure and rain and to help provide areas of shade for the spectators. A barrel-vaulted standing seam metal roof with metal bracket supports and canted glazing also helps to accentuate the two story volume at the front entry of the facility. general public.

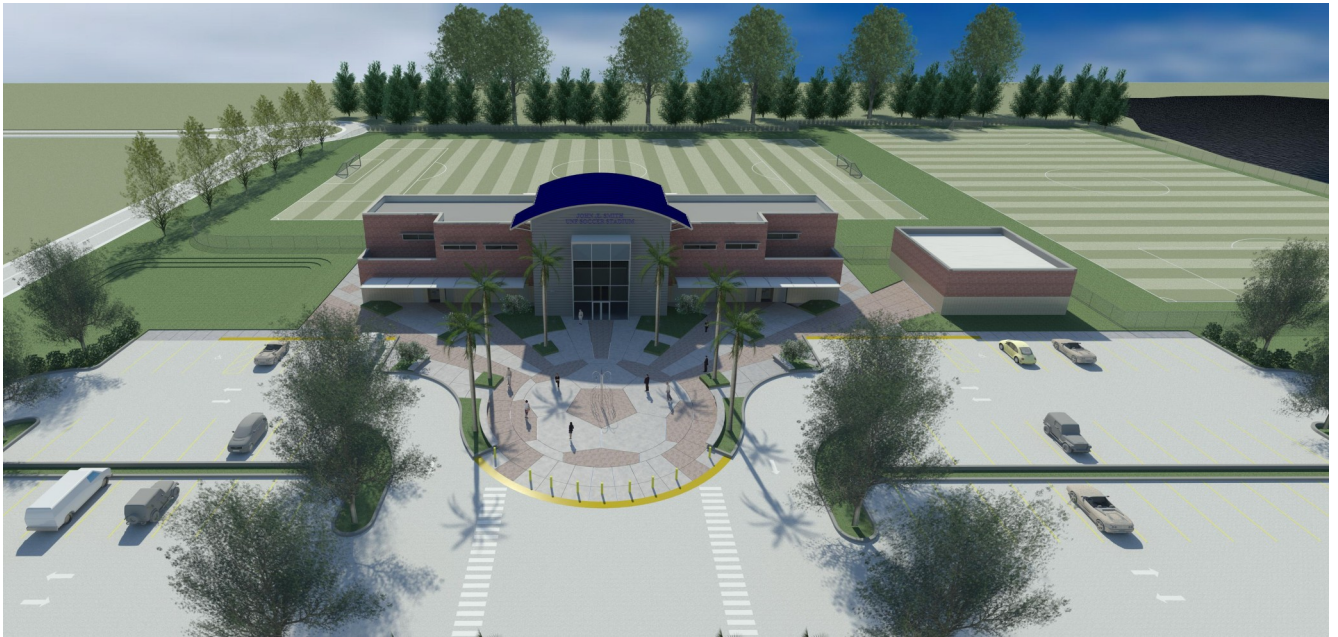
All these components help lend itself to a modernistic approach, style and sense of comfort for the students, staff and general public.

Eventually, in a Phase II of design and construction, there will be a second building adjacent to the Soccer Stadium to accommodate for future growth of the program. This building will accommodate additional men's and women's public restrooms, ticketing and concessions. There will also be an additional 750 bleacher seating capacity, that when added with the already 750 proposed seats, would bring the total spectator viewing count to 1,500 fans. This new stadium will be a significant addition to UNF's recreational and sporting facilities. For the first time, both UNF's soccer fans will be able to watch a NCAA Division I school games in a "purpose-built" stadium on campus.



**BORRELLI + PARTNERS**  
ARCHITECTURE PLANNING LANDSCAPE INTERIORS

University of North Florida  
Soccer Stadium  
Jacksonville, Florida



**BORRELLI + PARTNERS**  
ARCHITECTURE PLANNING LANDSCAPE INTERIORS