

Anchor[®]



Kimono Popi



[AnchorCrafts.com](https://www.AnchorCrafts.com)

   @anchorcrafting

Designed by Susi se enreda

Design No.: 0022419-00001-03

MEZ Needlecraft GmbH, 2022. All Rights Reserved.



Anchor Organic Cotton - 50 g - Art. n° 4660004 - *(colour n°)

Intermediate



S	(M)	L	(XL)	
82 - 86	(90 - 94)	98 - 102	(106 - 110)	fit to bust (cm)
102	(110)	116	(124)	actual bust measurement (cm)



8x	8x	9x	9x	*01025 (A)
2x	2x	3x	3x	*00105 (B)



4 mm



N° 18

Kimono Popi

TENSION

17treble crochet x 11rows = 10cm

STITCHES AND ABBREVIATIONS

ch – Chain

dc – Double crochet

dtr – Double treble crochet

R - Row

pr - Previous

rep – Repeat

st/s – Stitch/ es

PATTERN

BACK

With yarn colour A, 101 (111) 121 (131) ch.

Follow chart 1.

R 1 and R 2- 1ch (no count as st), 101 (111) 121 (131) dc

R 3- 5ch (first 4 counts as 1dtr), 3dtr in 1st dc, skip 9st, 1ch, *in the next dc work: 3dtr, 1ch, 1dtr, 1ch, 3dtr, 1ch, skip 9st*, rep from *to*, finish with 3dtr, 1ch, 1dtr in the last dc previous row.

R 4- 5ch (first 4 counts as 1dtr), 1dtr en 2nd dtr, 1ch, 1dtr in 4th dtr, 1ch, *in the next fan work: 1dtr in 1st dtr, 1ch, 1dtr in 3rd dtr, 1ch, 1dtr in 4th dtr, 1ch, 1dtr in 5th dtr, 1ch, 1dtr in 7th dtr, 1ch*, rep from *to*, finish with 1dtr in 3rd dtr, 1ch, 1dtr in 1st dtr, 1ch, 1dtr in 4th ch previous row.

R 5- 1ch (no count as st), 1dc in 1st dtr, 1dc in the first space of 1ch, *3ch, 1dc in the next space with 1ch*, rep from *to*, finish with 1dc in 4th ch previous row.

R 6- 1ch (no count as st), 1dc, 1ch, *1dc in the next space of 3ch, 1ch*, rep from *to*, finish with 1dc in dc previous row.

R 7- 5ch (first 4 counts as 1dtr), 3dtr in 1st dc, skip 9st, 1ch, *in the next dc work: 3dtr, 1ch, 1dtr, 1ch, 3dtr, 1ch, skip 9st*, rep from *to*, finish with 3dtr, 1ch, 1dtr in the last dc previous row.

R 8- Repeat Row 4

R 9- Repeat Row 5

R 10- Repeat Row 6

*Colour B

R 11- 1ch (no count as st), 1dc in the first dc, *1dc in the space of 1ch, 1dc in the next dc*, rep from *to*, 1dc in the last dc previous row. Total 101 (111) 121 (131) sts.

R 12- 1ch (no count as st), 101 (111) 121 (131) dc

Repeat R 3 to R 12 until R 70 (70) 80 (80).

R 71 (71) 81 (81) and R 72 (72) 82 (82) - 1ch (no count as st), 101 (111) 121 (131) dc

Cut and fasten off.

FRONT (X2)

With yarn colour A, 41 (41) 51 (51) ch.

Follow chart 1.

Repeat all the rows and indications of the back.

SLEEVES (X2)

With yarn colour A, 71 (71) 81 (81) ch.

Follow chart 2.

R 1- 5ch (first 4 counts as 1dtr), 3dtr in the last ch, skip 9st, 1ch, *in the next st work: 3dtr, 1ch, 1dtr, 1ch, 3dtr, 1ch, skip 9st*, rep from *to*, finish with 3dtr, 1ch, 1dtr in the last dc previous row.

R 2- 5ch (first 4 counts as 1dtr), 1dtr en 2nd dtr, 1ch, 1dtr in 4th dtr, 1ch, *in the next fan work: 1dtr in 1st dtr, 1ch, 1dtr in 3rd dtr, 1ch, 1dtr in 4th dtr, 1ch, 1dtr in 5th dtr, 1ch, 1dtr in 7th dtr, 1ch*, rep from *to*, finish with 1dtr in 3rd dtr, 1ch, 1dtr in 1st dtr, 1ch, 1dtr in 4th ch previous row.

R 3- 1ch (no count as st), 1dc in 1st dtr, 1dc in the first space of 1ch, *3ch, 1dc in the next space with 1ch*, rep from *to*, finish with 1dc in 4th ch previous row.

R 4- 1ch (no count as st), 1dc, 1ch, *1dc in the next space of 3ch, 1ch*, rep from *to*, finish with 1dc in dc previous row.

R 5- 5ch (first 4 counts as 1dtr), 3dtr in 1st dc, skip 9st, 1ch, *in the next dc work: 3dtr, 1ch, 1dtr, 1ch, 3dtr, 1ch, skip 9st*, rep from *to*, finish with 3dtr, 1ch, 1dtr in the last dc previous row.

R 6- Repeat R 2

Repeat R 3 to R 6 until R 24 (24) 28 (28)

R 25 (25) 29 (29)- Repeat R 5 (5) 5 (5)

Cut and fasten off.

BLOCKING

Take measurements of all parts before blocking so that the result is the same. Wash at the temperature indicated by the manufacturer (preferably in cold water) and soft soap; with a towel, wrap it and remove excess water. Spread on a flat and soft surface (for example, rubber children's puzzles) and on a towel or cotton fiber between puzzles and woven piece, never in direct contact with the puzzles to avoid a lot of moisture and bacteria. Nail with long-tipped pins and with one meter measure the piece to give the necessary shape.

Once dry, remove the pins.

ASSEMBLING

On the other hand, first join the shoulders, then the sleeves (by the initial turn of chains) focusing them on the shoulders, the rest of the sleeves up to the fist, and finally the back and front sides.

FRINGES

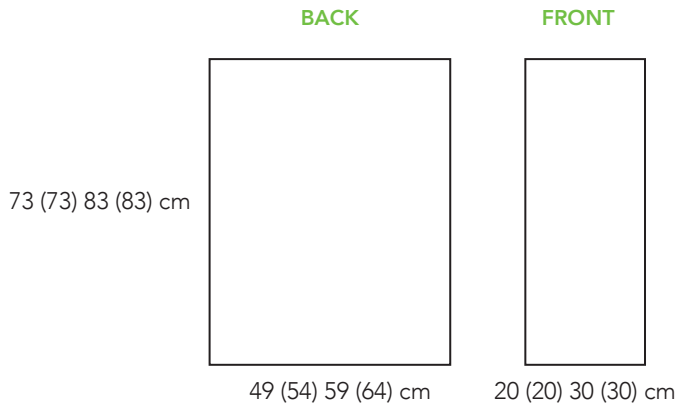
With yarn colour B, cut 30 cm strands (each fringe has 3 strands).

Add fringes on the bottom edge of the kimono: in the central hole of each fan, in each 5th dc of R 2 and in each corner of each front.

Once all the fringes are in place, equalize them with the help of a scissors.



MEASUREMENTS



KEYS

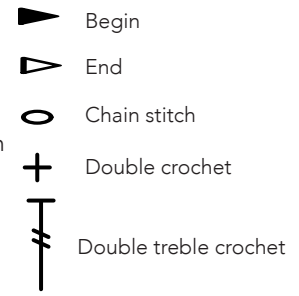


CHART 1 - BACK AND FRONTS

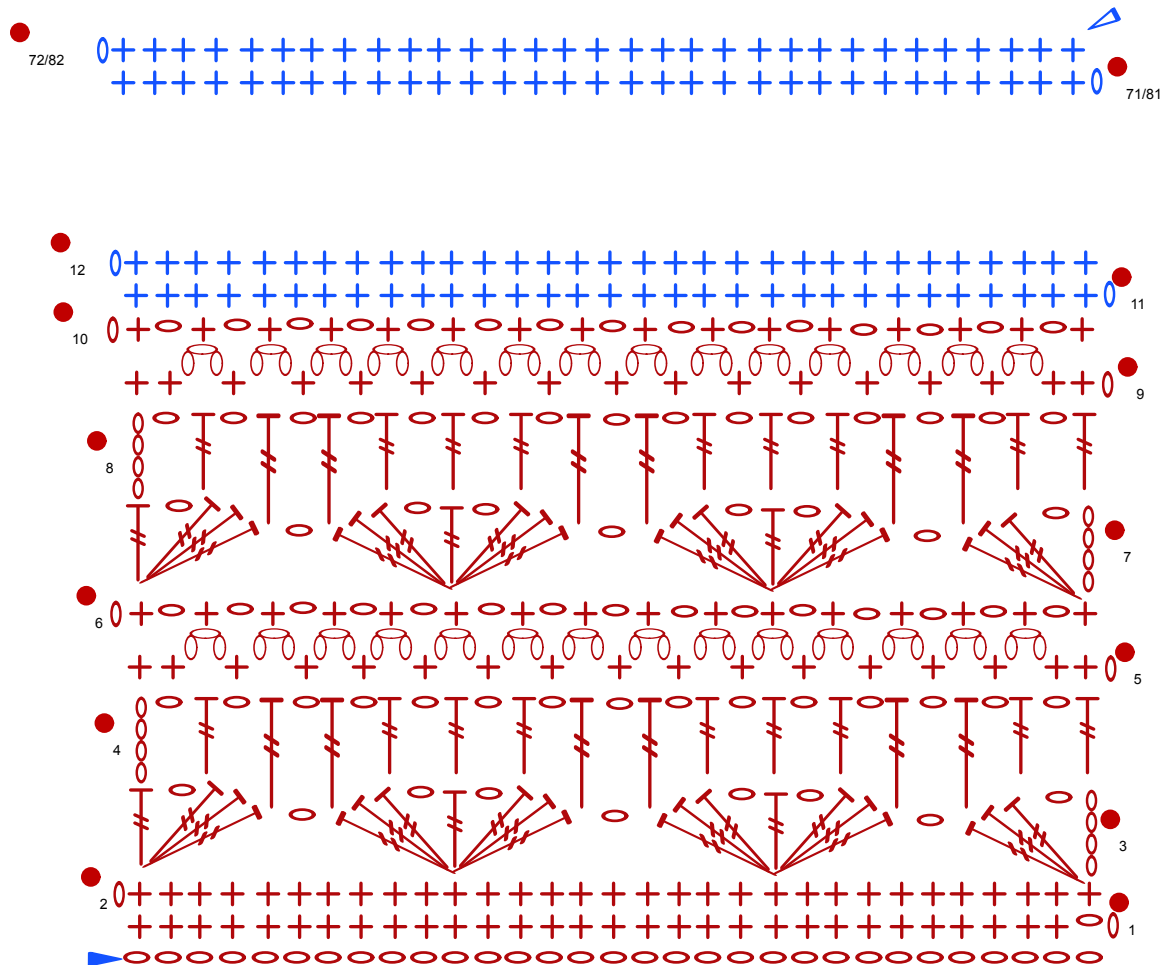
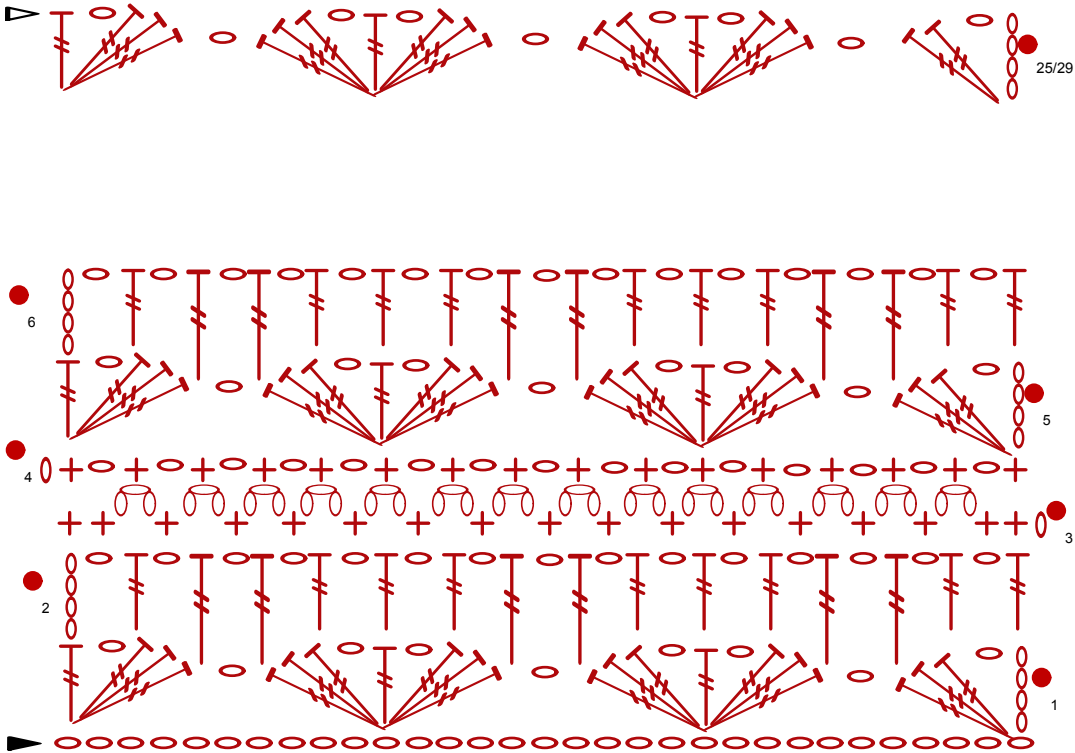


CHART 2 - SLEEVES



WASHING ADVICE

Always wash in as warm a water temperature as possible - up to the temperature recommended, with a short spin. Use a lot of water if hand washing. For darker colours we recommend the use of discolouration sheets.

Do not bleach.

Do not tumble dry. Drip-dry on a horizontal surface.

Iron on a hot temperature setting using a damp cloth.

Professional dry cleaning in tetrachloroethylene.

Do not use optical brighteners (or any detergent containing optical brighteners). We recommend to use a softener to preserve the natural softness of the yarn.