

Anchor[®]



Sunset
stripes
top



AnchorCrafts.com

[f](#) [@](#) [p](#) @anchorcrafting

Designed by Natalie Spiteri

Design No.: 0022421-00001-05

MEZ Needlecraft GmbH, 2022. All Rights Reserved.



Anchor Freccia 12 - 50 gr - Art. N° 4771012 - * (colour n°)



S	M	L	
82-86 cm	(90-94) cm	98-102 cm	To fit bust
62-66 cm	(68-72) cm	76-80 cm	To fit waist
86-90 cm	(94-98) cm	102-106 cm	To fit hips



1x	1x	1x	*00127
1x	1x	1x	*00300
1x	1x	1x	*06650
1x	1x	1x	*01442
1x	1x	1x	*00281
1x	2x	2x	*01003
1x	2x	2x	*08298



1,75 mm



N° 20

Sunset stripes top

TENSION

20 cm = 19,5 motives

10 cm = 17 rows

PATTERN

BACK

With colour 00127, make a chain of 170 (186) 202 chain stitches and work according to the chart. Alternate colours as shown in the stripes chart.

FRONT

Do the same as the BACK.

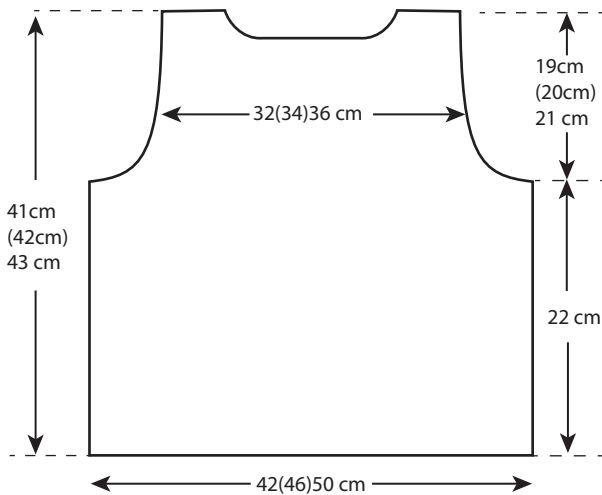
MAKING UP AND FINISHING OFF

With the wrong side of work facing out, join the shoulder and side seams working slip stitches around.

With colour 06650 work the neckline border and the armholes according to the chart.

Iron with a steam iron on the reverse without pressing.

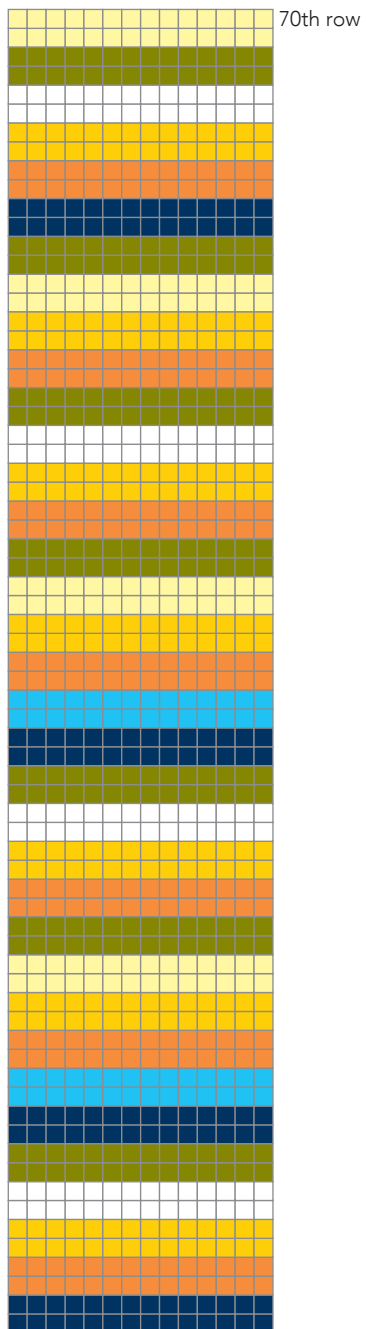
BACK / FRONT



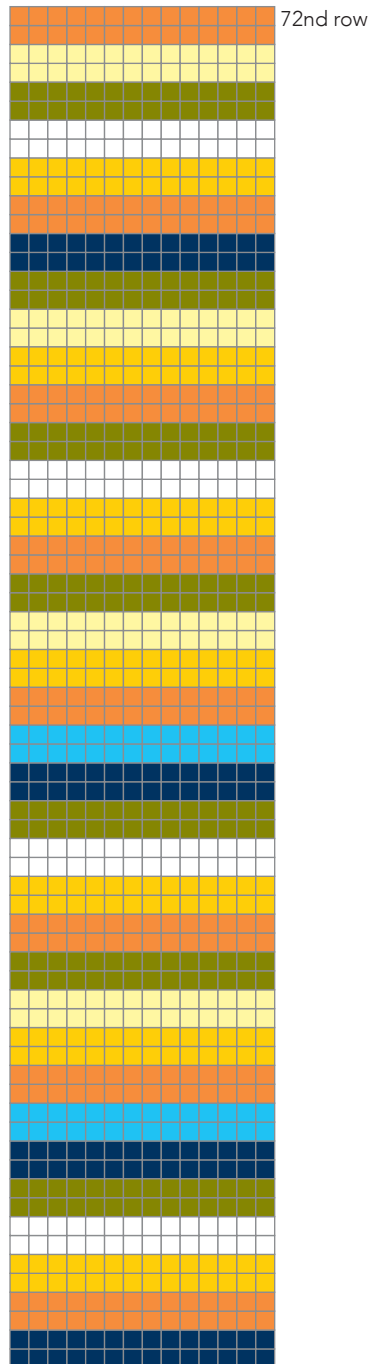
KEYS

- begin
- end
- chain
- slip stitch
- double crochet
- treble
- double treble

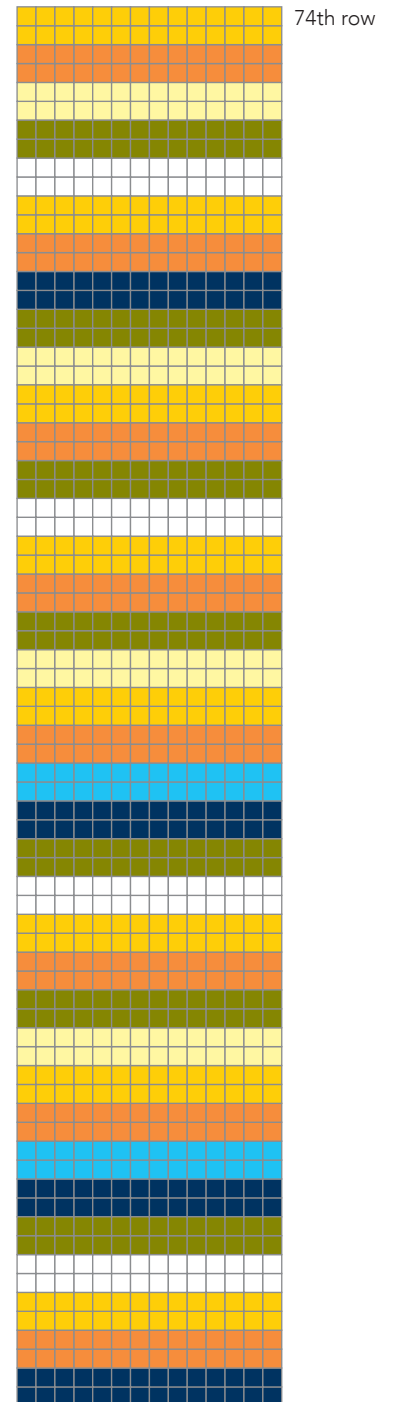
STRIPES
SIZE M



STRIPES
SIZE M



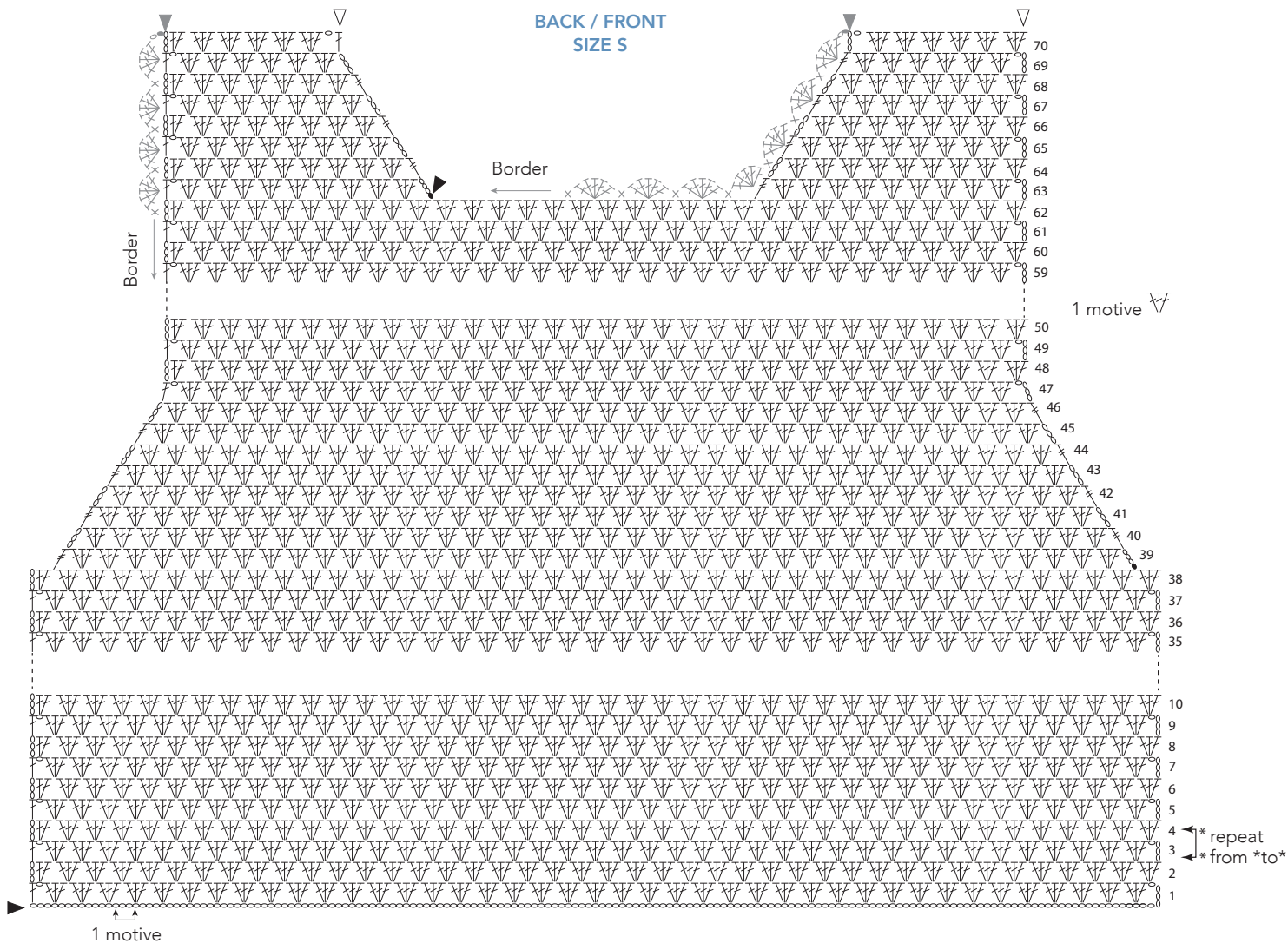
STRIPES
SIZE L

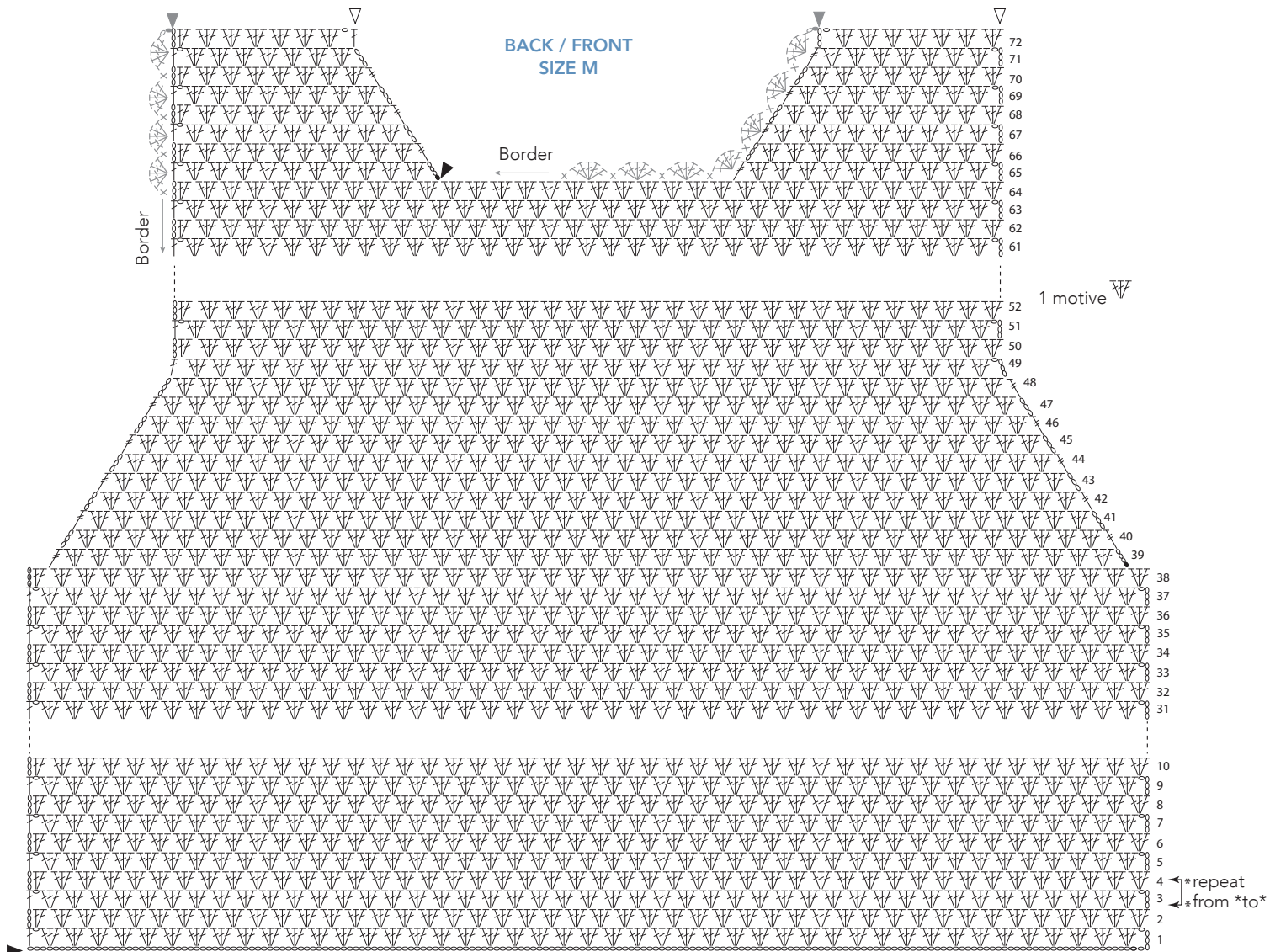


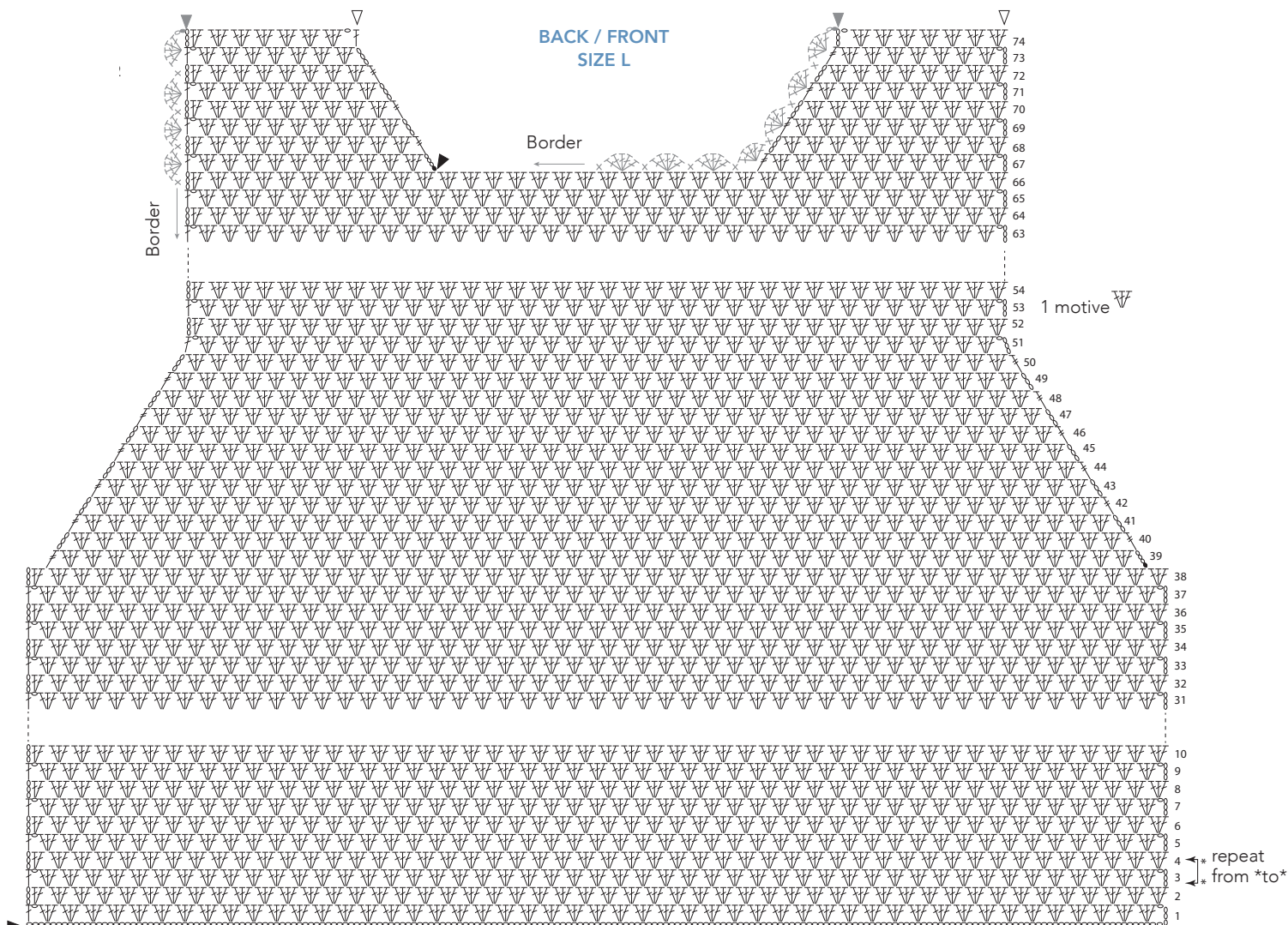
COLOURS

- *00300
- *00281
- *06650
- *08298
- *01003
- *00127
- *01442

BACK / FRONT
SIZE S







WASHING ADVICE

Always wash in the hottest temperature as possible - up to the temperature recommended, with a short spin. Use a lot of water if hand washing. For darker colours we recommend the use of discolouration sheets.

Do not bleach.

Do not tumble dry. Drip-dry on a horizontal surface.

Iron on a hot temperature setting using a damp cloth.

Professional dry cleaning in tetrachloroethylene.

Do not use optical brighteners (or any detergent containing optical brighteners).