

Anchor[®]



Wild
Leaves
tote



[AnchorCrafts.com](https://www.AnchorCrafts.com)

[f](#) [@](#) [p](#) @anchorcrafting

Designed by Lucia Cabrera

Design No.: 0022419-00001-01

MEZ Needlecraft GmbH, 2022. All Rights Reserved.



Anchor Organic Cotton – 50 g – Art. N° 4660004 *(colour n°)

Intermediate



36 x 32 cm (without handles)



4x *00387, 1x *00038, 1x *00178, 1x *00071



3,5 mm



N° 18

EXTRAS
stitch markers

Wild Leaves tote

STITCHES AND ABBREVIATIONS

ch chain
dc double crochet
sl st Slip stitch
tr treble

Double crochet back: insert the crochet in the BACK LOOP ONLY of the st of the row under.

rnd round

Tapestry technique: work with one thread for each colour. Leave the thread of the 2nd colour on the wrong side and work the dc with the colour in progress by, inserting the crochet in the BACK LOOP ONLY of the base st and underneath the thread of the 2nd colour dragged with the left hand. Change colour before completing the last st of the previous colour.

TENSION

approx 22 dc in the back loop x 18 rounds = 10x10 cm

HOW TO MAKE

BASE

Begin by making 72 ch + 3 ch (counts as first tr) in colour 00387.

Row 1 – Row 9: crochet as shows in the **chart 1** (base). Turn the work at the end of each row. After row 9 fasten off and weave in the end.

Rnd 10: attach thread in the first st of the row 9 and make surround with a dc round, crochet 72 dc up and down each, 18 each side and 1 dc in the corners (184 dc) as shows in the **chart 2**. Fasten off and weave in the end.

BODY

Join the colour 00387 on the stitch A of **chart 2**.

Rnd1 – Rnd 59: works in dc in the back loop a continuous spiral (without closing the round with a sl st), as shows in the **chart 3**. Repeat the pattern 2 times. Doing colour changes with the tapestry technique. Use a stitch markers to mark the last stitch of the round. Fasten off and weave in the end.

HANDLES X 2

Begin by making 100 ch + 1 ch (do not count as st).

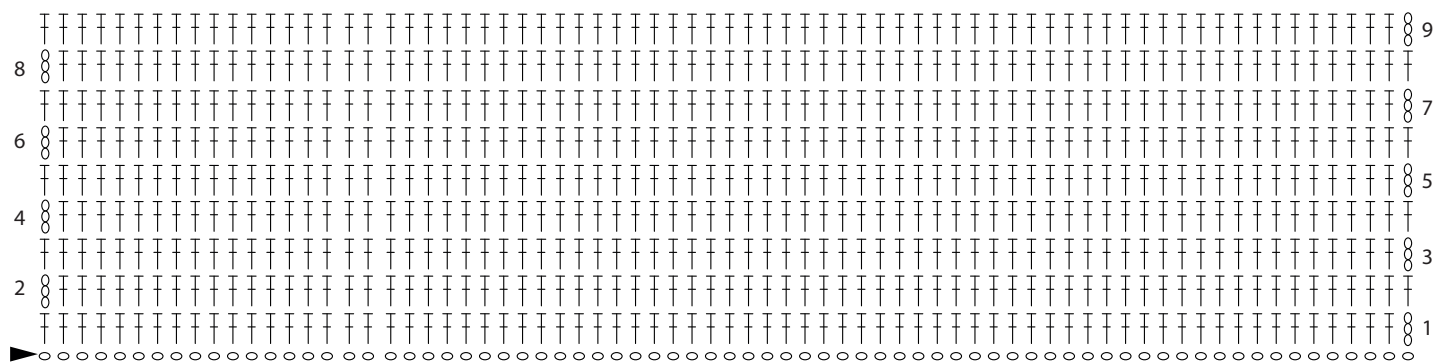
Row 1: skip 1 ch, 100 dc.

Row 2 - Row 5: 1 ch (not count as st), 100 dc.

Fasten off and weave in the end.

Sew the handles at the back and the front of the bag (see photo).

CHART 1 - BASE



72

CHART 2 - BODY

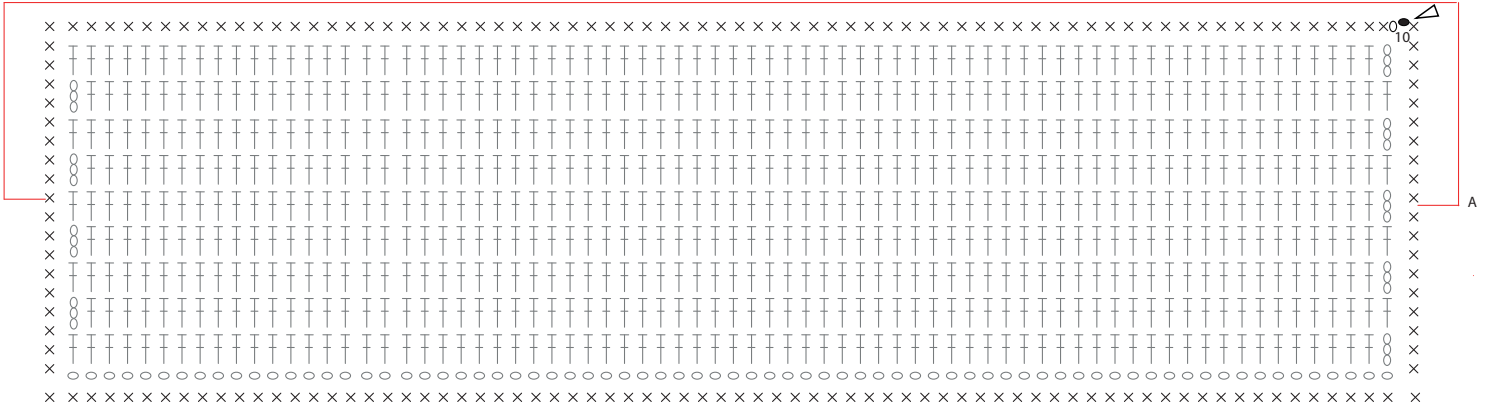


CHART 3 - PATTERN



CHART KEY

- Chain
- Slip stitch
- × Double crochet
- T Treble crochet
- ▽ End
- ▲ Begin
- double crochet into the back loop

COLOURS KEY

- *00387
- *00178
- *00071
- *00038

WASHING ADVICE

Always wash in as warm a water temperature as possible - up to the temperature recommended, with a short spin. Use a lot of water if hand washing. For darker colours we recommend the use of discolouration sheets.
Do not bleach.
Do not tumble dry. Drip-dry on a horizontal surface.
Iron on a hot temperature setting using a damp cloth.
Professional dry cleaning in tetrachloroethylene.
Do not use optical brighteners (or any detergent containing optical brighteners). We recommend to use a softener to preserve the natural softness of the yarn.