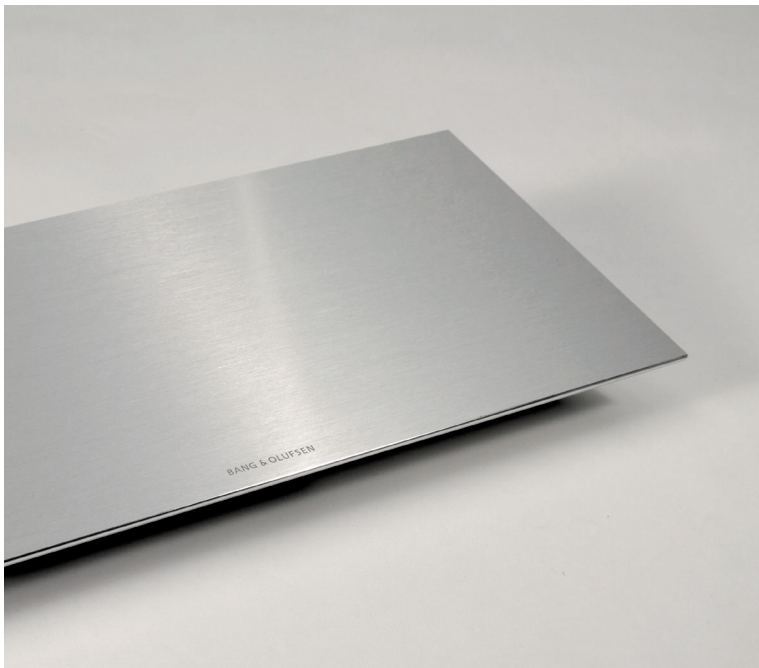


BEOLINK GATEWAY

Transform your home into a world of instant convenience and spellbinding experience



THE BANG & OLUFSEN HOME INTEGRATION PHILOSOPHY

At Bang & Olufsen we strive to enhance your living space by seamlessly integrating your systems and your home. All our products belong to a proud legacy of design and engineering. A statement of timeless excellence that ensures that each new generation is as compatible with the past, as it is the future. Our products blend seamlessly with all your available intelligent systems. With just one touch on your remote you can create unique moods to match your daily activity: a simplicity that soon becomes so addictive you'll wonder how you ever lived without it.

BANG & OLUFSEN

MEASUREMENTS

bang-olufsen.com/home-integration



SPECIFICATIONS

Designer	Placement options	Weight
Torsten Valeur, David Lewis Designers	Shelf Wall Bracket 19 inch Rack Mount sliding tray (STB brackets)	1.7 kg
Connections	Power consumption	Power supply
Master Link Master Link RJ45 USB (for RS232 adapter) x 2 Network Link (LAN 10/100 Mbit) Mains connector	7.7 W	100 - 240 V, 50/60Hz

FEATURES

- General**
- All programming done via Web interface
 - Real Time Programming
 - Easy to capture resources from connected systems
 - Capture events from your resources and use them in the programming
 - Several users can program at the same time from any device
 - Enables the Home Control menu on the Bang & Olufsen televisions
 - Secure Remote Access to your home via the BeoLink App
 - Ready for Internet of Things (IoT) using IFTTT (Requires Remote Access)
 - Astronomical Clock built-in. Enables event based on sunset / sunrise
 - Save programming time by making generic macro programming
 - Possible to develop new drivers in Lua scripting language
 - Advanced macro programming can be done with Lua scripting language

- Supported Systems (2016)**
- Lutron Homeworks Interactive
 - Lutron HomeWorks QS
 - Lutron RadioRa2 / RadioRa
 - Lutron Caseta Wireless
 - Lutron Grafik QS / Grafik Eye
 - Lauritz Knudsen, IHC-Schneider, LexControl
 - KNX / EIB
 - Clipsal
 - Legrand / Bticino
 - Smarthouse
 - Vantage
 - Dyalite
 - Conson XP
 - Velux Skylight Windows
 - Philips Hue
 - Global Cache - iTach IP2SL / IP2CC / IP2IR
 - NEST Thermostat & Smoke Alarm
 - Tekmar HVAC