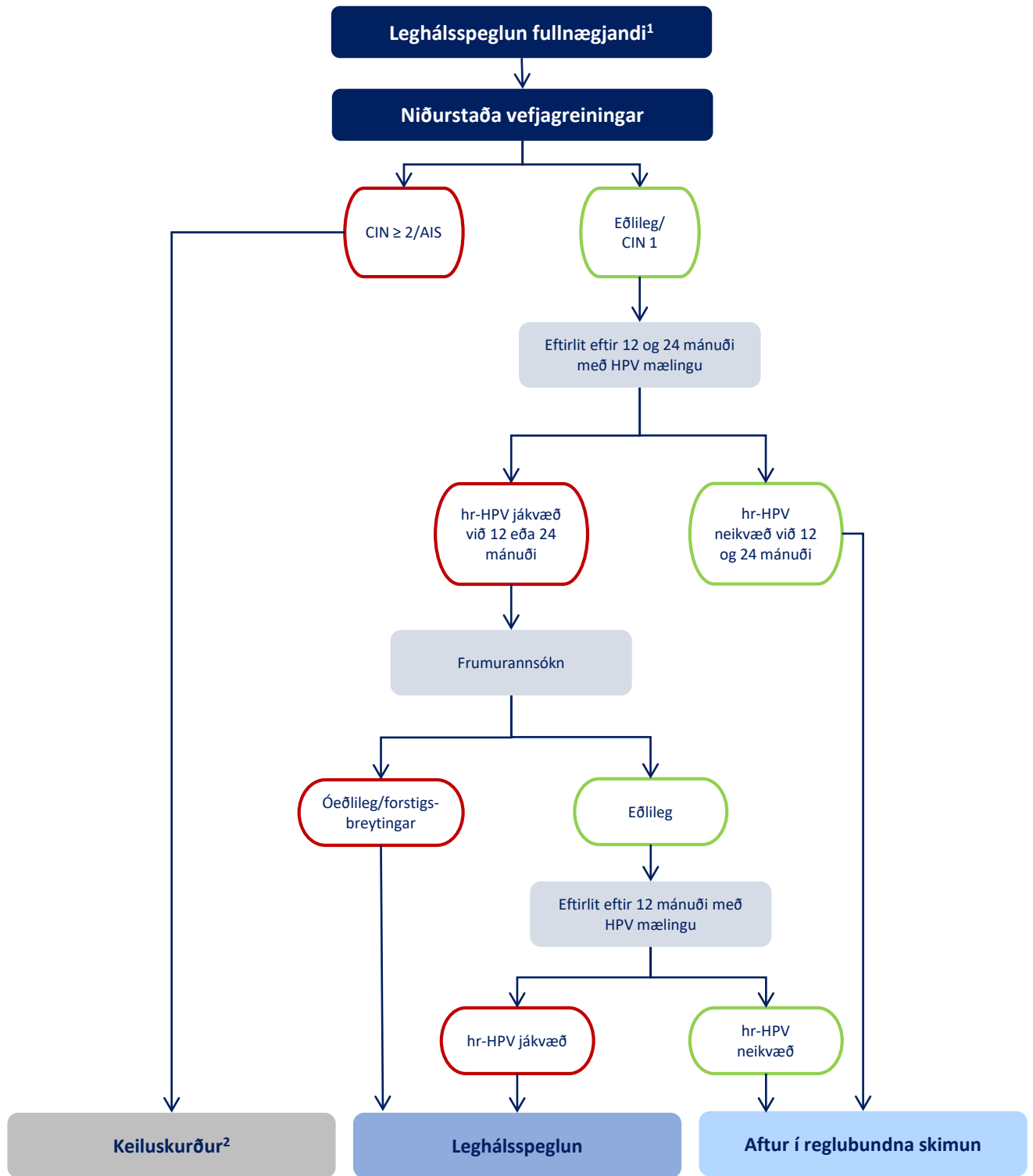


# Konur með ASCUS, LSIL, viðvarandi hr-HPV eða endurtekin ófullnægjandi sýni



## Athugasemdir:

1: Ef ófullnægjandi leghálsspeglun, klínískt mat og/eða ræða í teymi.

2: Mögulegt eftirlit við CIN 2, sjá nánar í texta.

## Skammstafanir:

**CIN** Cervical intraepithelial neoplasia

**LSIL** Low grade intraepithelial lesion

**ASCUS** Atypical squamous cell of undetermined significance

**AIS** Adenocarcinoma in situ

**hrHPV** High risk human papilloma virus

**HPV** Human papilloma virus