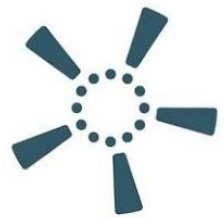


Co-funded by the European Union. Views and opinions expressed are however those of the author(s) only and do not necessarily reflect those of the European Union or CINEA. Neither the European Union nor the granting authority can be held responsible for them.



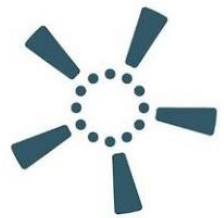
RECET

RURAL EUROPE
FOR THE CLEAN ENERGY
TRANSITION



RECET Project
Ársfundur LIFE á Íslandi
Norænna Húsið, 28. maí 2026

Co-funded by the European Union. Views and opinions expressed are however those of the author(s) only and do not necessarily reflect those of the European Union or CINEA. Neither the European Union nor the granting authority can be held responsible for them.



RECET

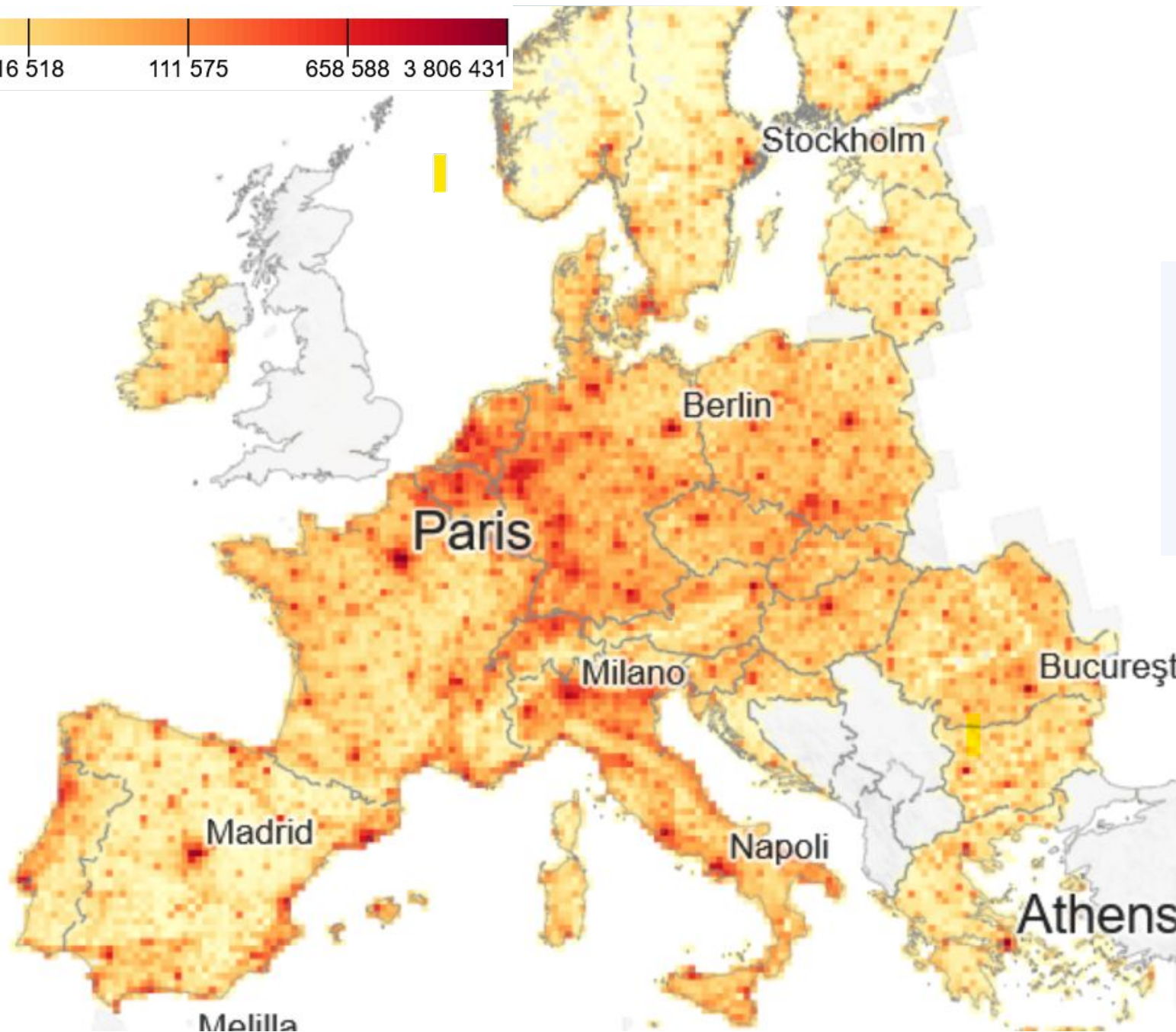
RURAL EUROPE
FOR THE CLEAN ENERGY
TRANSITION



KEY POINTS OF THE ENERGY TRANSITION: WHAT TO DO BEYOND RENEWABLE GENERATION

Rural areas

Population



RURAL EUROPE
FOR THE CLEAN ENERGY
TRANSITION



83%

EU's rural areas cover 83% of the EU territory



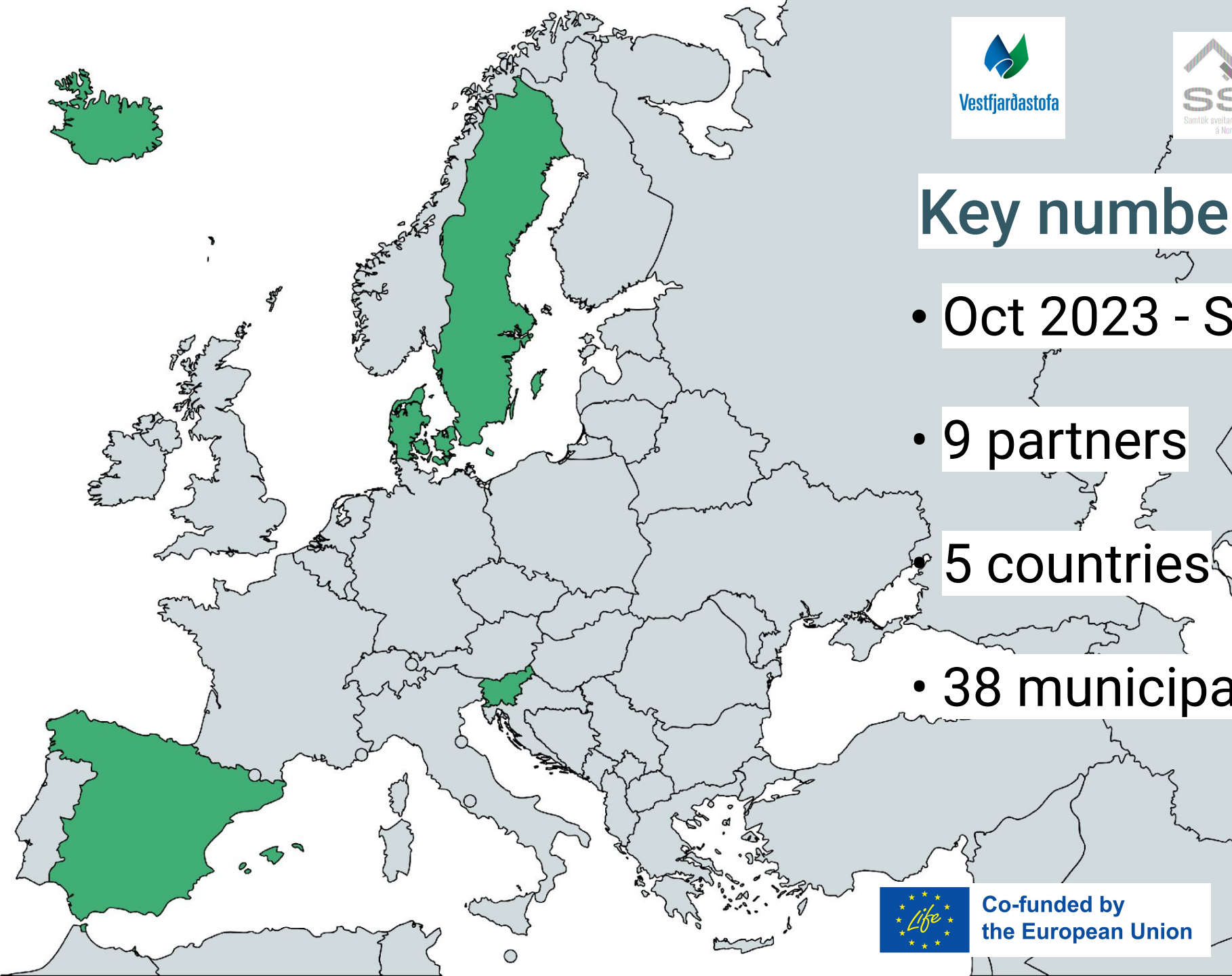
30%

30% of the EU population live in EU's rural areas

<https://ec.europa.eu/eurostat/statistics-explained/index.php>



RECET Highlights



Key numbers

- Oct 2023 - Sept 2026
- 9 partners
- 5 countries
- 38 municipalities



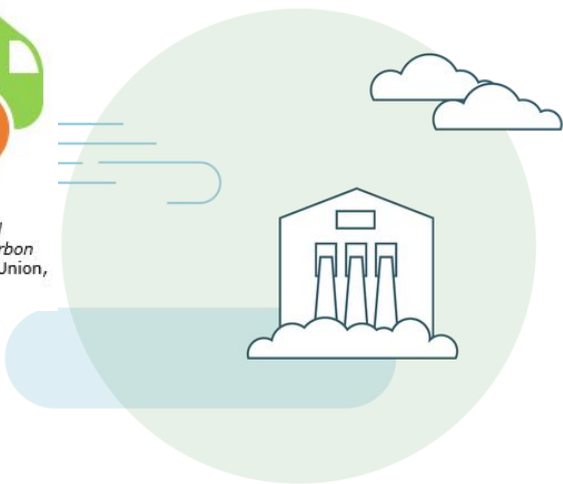
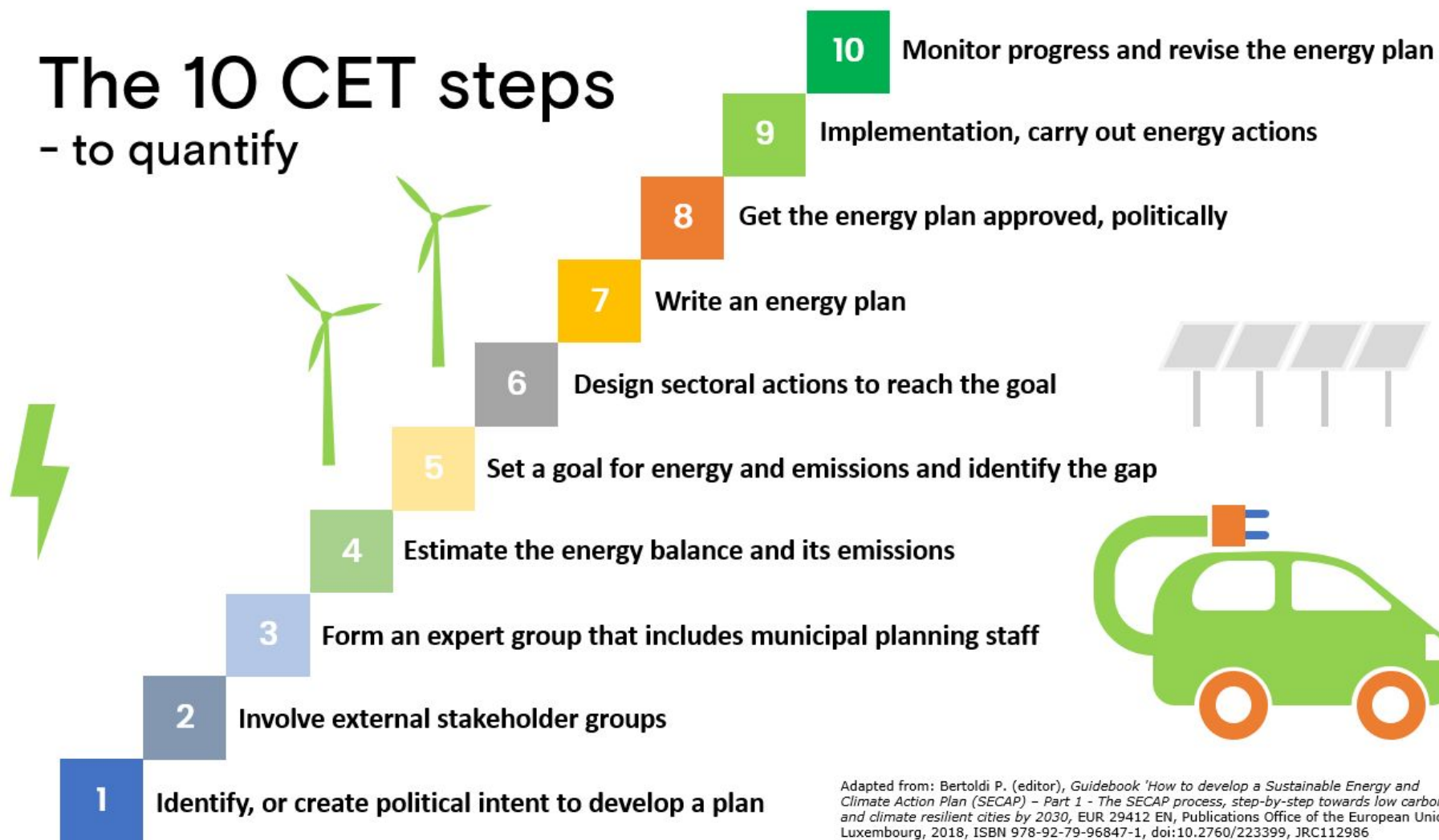
CONSELL INSULAR DE MENORCA

Methodology:

The 10 Steps Ladder

The 10 CET steps

- to quantify



Adapted from: Bertoldi P. (editor), *Guidebook 'How to develop a Sustainable Energy and Climate Action Plan (SECAP) - Part 1 - The SECAP process, step-by-step towards low carbon and climate resilient cities by 2030*, EUR 29412 EN, Publications Office of the European Union, Luxembourg, 2018, ISBN 978-92-79-96847-1, doi:10.2760/223399, JRC112986

Outcome

- 2 regional plans
 - Svæðisskipulag Vestfjarða
 - Loftslagsstefna Norðurlands eystra 2026
- ásamt aðgerðaáætlun

- Action Bank
- Fossil Fuel Dashboard



Key Findings

Methodology

The ladder is not a linear process.

Several and continuous back and forth are necessary to ensure an effective process



Local engagement

One size does not fit all.

Each municipality has specificities, each group of stakeholders have their own priorities.

The approach and content must be tailored.



Have a strong foundation before starting building

- Review the basics regularly
- Reduce the feeling of “too abstract, too big”
- Being part of a bigger plan



Synergies

- With other Projects

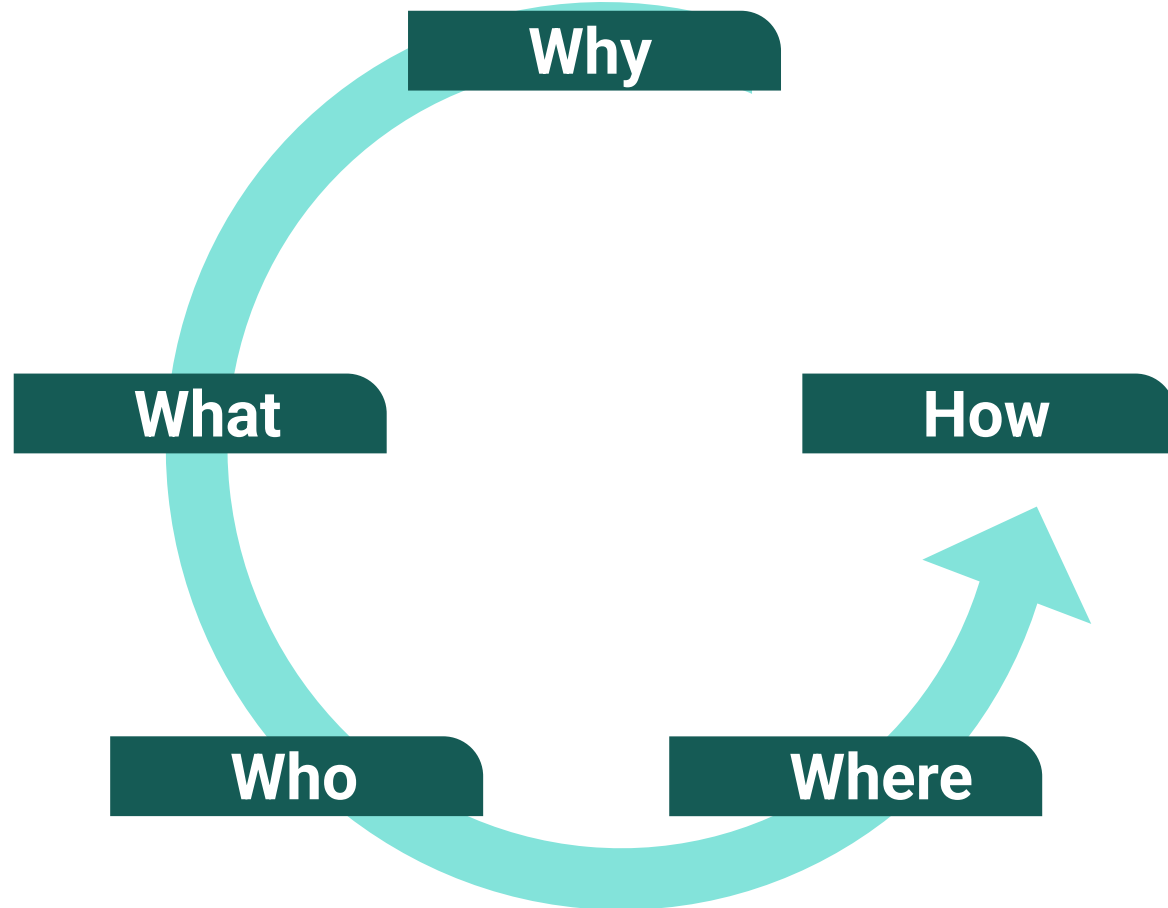
Look for synergies with ongoing projects in the municipalities

- With other plans

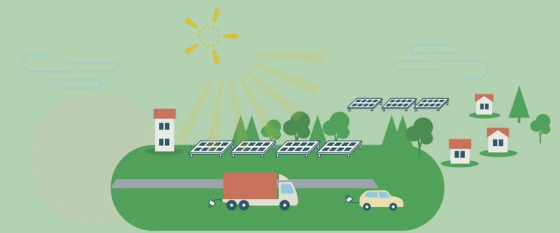
Spacial plan, grid plan, financials plans, ...



Divert from traditional approach



Co-funded by
the European Union





RECET

RURAL EUROPE
FOR THE CLEAN ENERGY
TRANSITION



Let's be in touch
ribes@newenergy.is

Co-funded by the European Union. Views and opinions expressed are however those of the author(s) only and do not necessarily reflect those of the European Union or CINEA. Neither the European Union nor the granting authority can be held responsible for them.

