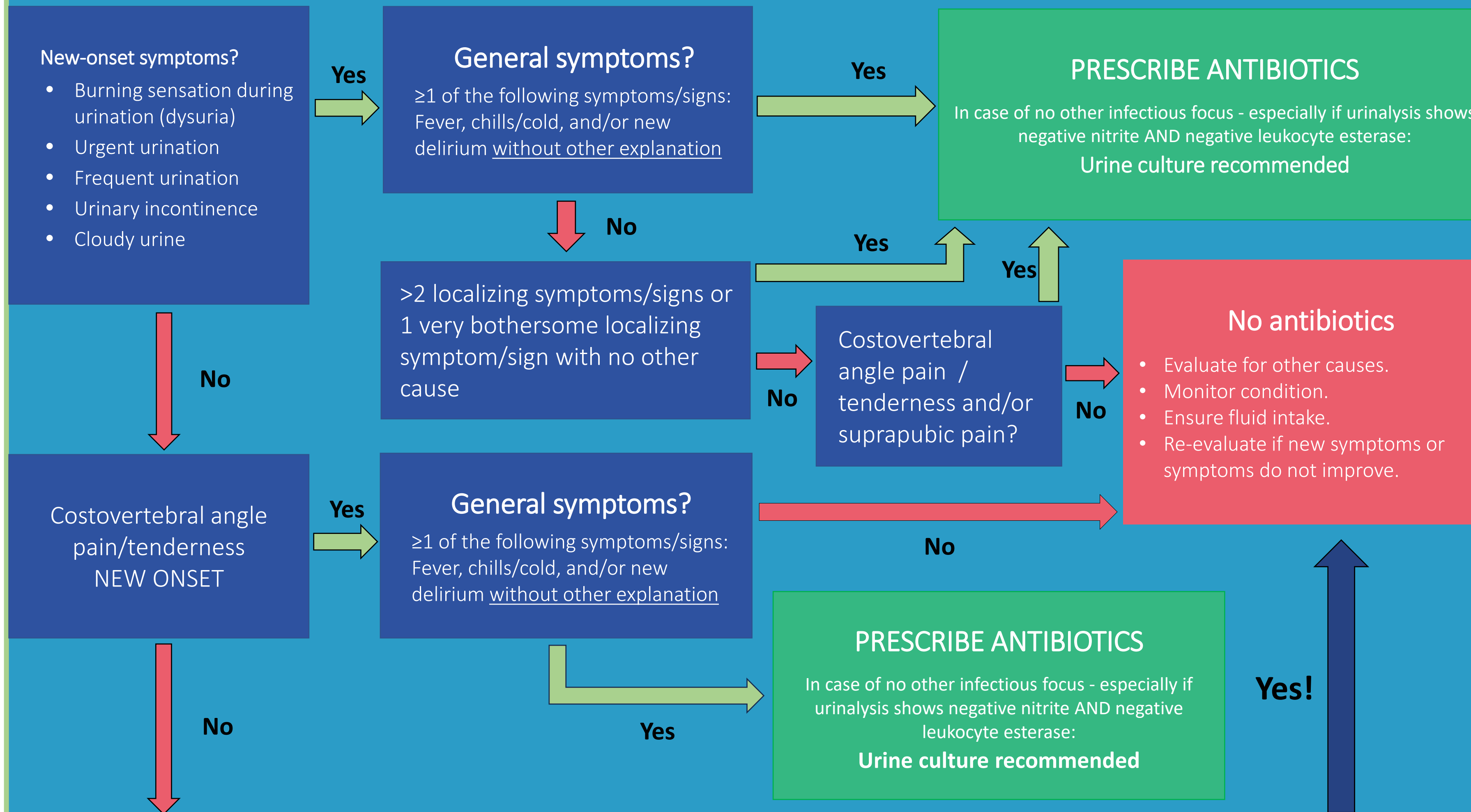




Urinary tract infection (UTI) decision protocol for frail elderly adults

UTI is suspected Individual **without** an indwelling urinary catheter



One or more of the following signs and symptoms regardless of urinalysis results:

- Behavioural change
- reduced nutrition/fluid intake
- decrease in function
- dizziness
- weakness
- discomfort
- haematuria
- changes in cognitive ability (without suspected delirium)
- nausea
- nocturia
- urinary retention
- colour changes in urine
- bad smelling urine.

UTI is suspected Individual **with** an indwelling urinary catheter

