



Horizon Europe

LIFE Ársfundur 28.05.2026

Notkun Gervigreindar til að finna styrk tækifæri

Kolla Bjargmundsdóttir Landstengiliður.



Dagskrá

Íslenska landslagið, umsækjendur & styrkþegar

Tvær glærur, hvað er Horizon Europe

Hvernig finnum við tækifæri í Horizon Europe
sem slá í takt með þinni ástríðu?

Finum samstarfsaðila | consortium !

Skemmtileg & Fróðleg skjöl



The Horizon Europe
network of National Contact Points
for **C**limate, **E**nergy and **M**obility

GUIDE FOR NEWCOMERS WITH LIMITED TIME

A quick-start guide to Horizon Europe cluster 5



The Horizon Europe
network of National Contact Points
for **C**limate, **E**nergy and **M**obility

Greenet's guide on
finding the right (i.e. winning) consortium partners

Horizon Europe Tópík köll m.t.t.þátttakenda lista:

- Loftslagsaðlögun
- Hringrásarhagkerfi
- Líffræðilegur fjölbreytileiki
- Sjálfbær orkukerfi
- Grænt vetni
- Hafrannsóknir og bláa hagkerfið
- Sjálfbær matvælaakerfi
- Loftslagshlutlausar borgir

Árangur Íslands í Horizon Europe

Árangur Íslands í Horizon Europe	ágú.24	sep.25	apr.26
Fjöldi styrktra verkefna með ísl. þátttöku	120	139	165
Fjöldi þátttökutilvika í styrktum verke.	153	202	251
Fjöldi umsókna	486	639	766
Fjöldi þátttökutilvika í umsóknum	692	907	1097
Fjöldi íslenskra aðila sem leiða verkefni	21	21	26
Fjöldi íslenskra aðila sem leiða umsóknir	104	156	178
Heildar árangurshlutfall	25%	22%	22%
Heildarst. til íslenskra aðila	66.590.125 €	90.808.091 €	123.596.417 €
Fjárfestingarloforð EIC til 3 verkefna	19.500.000 €	19.500.000 €	19.500.000 €
Samtals	86.090.125 €	110.308.091 €	143.096.417 €

Horizon Europe	Fjöldi umsóðna með íslenskri þátttöku apríl 2026	Fjöldi styrktra verkefna með íslenskri þátttöku apríl 2026	Alinguisnitúlið (%)	Styrkupplæð (€)	Hlutfétt af heildarstyrkveitingu til Íslands (%) að undanskildu fjárfestingaloforðum
CL2	42	6	14,29%	2.168.989	1,75%
CL3	25	5	20,00%	1.606.272	1,30%
CL4	71	11	15,49%	2.910.268	2,35%
CL5	89	27	30,34%	35.237.359	28,51%
CL6	140	33	23,57%	14.594.093	11,81%
EIC	87	8	9,20%	10.435.512	8,44%
EIE	8	4	50,00%	2.337.413	1,89%
EIT	1	1	100,00%	1.170.972	0,95%
ERC	41	8	19,51%	8.023.651	6,49%
EURATOM	1	1	100,00%	309.156	0,25%
EUROHPC	3	1	33,33%	184.739	0,15%
Health	42	9	21,43%	4.284.180	3,47%
TI	6	1	16,67%	8.420.953	6,81%
U	29	1	3,45%	4.998.830	4,04%
MISSIONS	42	9	21,43%	7.710.229	6,24%
MSCA	106	18	16,98%	4.329.550	3,50%
SESAR	16	7	43,75%	12.340.001	9,98%
WIDERA	18	5	27,78%	509.464	0,41%
Samtals	775	165	21,29%	123.596.417	100,00%



iStock™

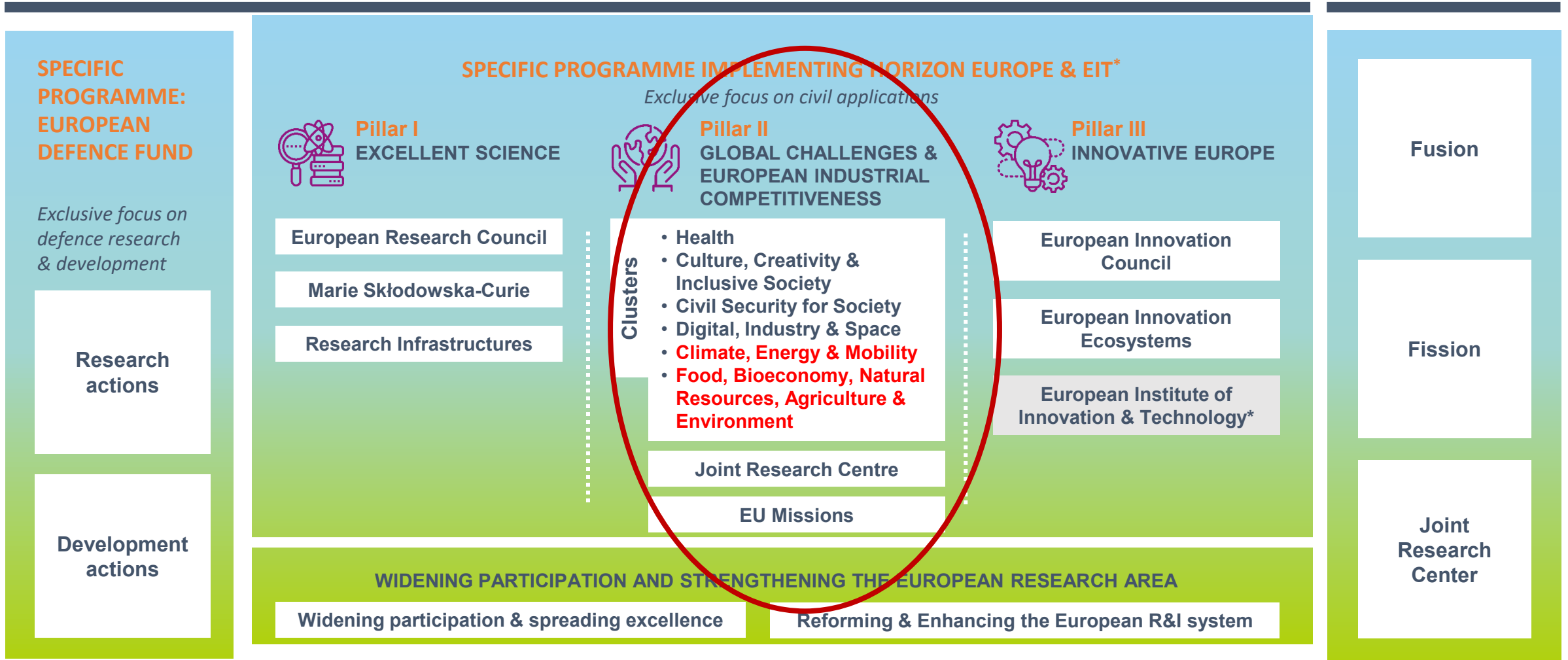
Credit: FG Trade

MAKE
OUR
ELITID

FIGHT TO
FOR A BETTER
TOMORROW

HORIZON EUROPE

EURATOM



* The European Institute of Innovation & Technology (EIT) is not part of the Specific Programme

Predefined expected Outcomes

HORIZON-CL5-2026-02-D3-22: Underground Thermal Energy Storage in dense urban areas

Call: Cluster 5 Call 02-2026 (WP 2025)

Specific conditions

<i>Expected EU contribution per project</i>	The Commission estimates that an EU contribution of around <u>EUR 9.00 million</u> would allow these outcomes to be addressed appropriately. Nonetheless, this does not preclude submission and selection of a proposal requesting different amounts.
<i>Indicative budget</i>	The total indicative budget for the topic is <u>EUR 18.00 million</u> .
<i>Type of Action</i>	<u>Innovation Actions</u>
<i>Technology Readiness Level</i>	Activities are expected to achieve <u>TRL 6-7</u> by the end of the project – see General Annex B. Activities may start at any TRL.

Expected Outcome: Project results are expected to contribute to all of the following expected outcomes:

- Advanced European innovative knowledge basis and increased technology competitiveness in the area thermal storage;
- Improved security of the future European renewable-based energy system;
- Contribution to the decarbonisation of cities and densely populated urban areas with high safety solutions;
- Significant reduction of LCOHS (Levelised Cost of Heat Storage);
- Local communities are engaged and their expectations are responded to.
- Technology developers practice inclusive societal engagement which is early, continuous, and sensitive to the technical specificities (e.g. local resource, subsurface uncertainties) and social challenges (e.g. low public awareness) of underground thermal energy storage technologies in the context of densely populated urban areas.

Stoð 2 tópic köll: Grunnatriði

Top Down tópic köll fyrirfram skilgreindar áskoranir. Óskað eftir Expected Outcomes & Impacts þar sem þín sérfræðipækning er hluti af miklu stærra púsluspili, í þágu sameiginlegs markmiðs.

Samstarf 3 landa að lágmarki (þar af að minnsta kosti eitt aðildarríki). Meðalstærð samstarfshóps | consortiums er ~ 12

Algengur styrkur er á bilinu 2–30 milljónir evra. **100% fjármögnun** að undanskildum fyrirtækjum sem starfa á hærri TRL stigum eða sækja um í Innovation Action topic köll.

Tópic köll má finna:

[F&T Portal](#)

Í [PDF skjölum](#)



Top Down: Regnbogar & Fiðrildi



Sumum kann að finnast þetta flókið eru ekki hrifin af samstarfi, og enn erfiðara með ókunnugum? finnst stórnsýslan lýjandi, leiðinlegt að gera umsókn og aðrir bara hreinlega vita ekki hvar þeir eiga að byrja

Mest af öllu vilja þau bara vinna í sínum verkefnum.

Það er algjörlega hægt! Rannsóknir þínar, ástríða eða sérþekking getur einmitt verið lykilþátturinn sem vantar inn í samstarfshópinn (*consortium*) til að skapa samlegðaráhrif eða margfeldisáhrif sem leiða til enn stærri samfélagsleg ávinnings

Regnbogar & Fiðrildi



Rannsóknin þín, ástríðuverkefnið þitt 2027–2032?

Hvað verður það?

Næsta skref er að finna “expected outcomes” er falla að þínu verkefni

Finnum þín „*expected outcomes*“



AI ; Claude, Anara, ChatGPT, Gemini, Coral AI . . .

Hleður inn skjalinu [work programmes](#) í þinn AI . . . **og byrjar að leika þér**

Stefnunmótandi skjal, “um X stofnun” vísindagreinar, CV, aðrar umsóknir, stakir vinnupakkar**Má vera hvað sem er**

Anara AI

CBE JU + Invite

Display Tabs Filter 5 files in folder Share Chat Notes

Horizon Europe Wo... Horizon Europe Wo... Horizon Europe Wo... Annual Work Progra... Horizon Europe Wo...

156% 116 of 269

test and demonstrate on the ground sustainable and inclusive science-based approaches and solutions for the co-management of marine and freshwaters resources.

Active engagement of fishers in habitat protection and restoration could include e.g.: regenerative practices; ecosystem management approaches; measures for prevention and control of invasive species; fish stock recovery plans; sustainable low-impact fishing operations, technologies and tools; multipurpose use of marine space as well as citizen science actions to raise fishers' awareness and involve them in all steps from data collection to their assessment and use. Projects are encouraged to undertake actions to enhance carbon sequestration capacities of marine and coastal ecosystems, including mangroves, saltmarshes and seagrass habitats. These actions should align with the Q.U.A.L.I.T.Y criteria (Quantification, Additionality, Long-term storage, and Sustainability) set out in the Regulation (EU) 2024/3012, which establishes a voluntary Union certification framework for permanent carbon removals, carbon farming, and carbon storage in products and engage with

MAST contribution to food I... ▼			
5	ecosystems and resources.	generative practices; ecosystem management approaches... 10 .	Mussel farming is a key regenerative practice. Your organization can act as a crucial partner by supplying the high-health, selectively bred spat needed for habitat restoration projects led by fishing communities, enhancing both biodiversity and local livelihoods.
	HORIZON-CL6-2026-01-CIRCBIO-11:	• EU industry has a competitive edge in	Bioscience Innovator: While your primary prod-

Það sem ég gerði var að búa til folder með öllum WP's er ég vildi leika mér með

[CI 5, CI 6, NEB, Missions & CBE JU]

Hér er promtið

I want to find some expected outcomes where my organisation can contribute to. Here are details about my organisation : Verkefni MAST vinnur að matvælalöggjöf í samvinnu við ráðuneytið og á þetta við um löggjöf í allri fæðukeðjunni, þ.e. frá heilbrigði og velferð dýra, þ.m.t. sjávarafurða, plöntuheilbrigði, fóðri, vinnslu og dreifingu og þar til matur er borinn á borð neytenda. Stofnunin fer með eftirlit með frumframleiðslu búfjárafurða, sláturhúsum, kjötvinnslum, mjólkurbúum og eggjaframleiðslu, eftirlit með sjávarafurðum og allt inn- og útflutningseftirlit með matvælum. MAST fer einnig með yfirumsjón með matvælaeftirliti á vegum heilbrigðiseftirlits sveitarfélaga og eftirlit með störfum dýralækna sem veita almenna dýralæknaþjónustu og öðrum sem sinna heilbrigðisþjónustu við dýr. Einnig fer stofnunin með fóðureftirlit og önnur verkefni eins og sjá má á eftirfarandi lista yfir helstu verkefni MAST:

matvæla umhverfisgjafi MAST. Heildrigisetningarsvæðin eru til og um allt land.

Can you make me a table where you list:

the topic call | expected outcomes where we can contribute to | explain how we can contribute to the selected expected outcomes

IAST.

Topic Call	Expected Outcomes	How MAST Can Contribute
HORIZON-CL6-2026-02-FARM2FORK-01	Enhanced toolbox of innovative phytosanitary treatments to ensure safe trade [1].	Your expertise in plant health and import/export control directly supports the validation and regulatory approval of new treatments for safe trade [2].
HORIZON-CL6-2027-02-FARM2FORK-03	Targeted strategies and guidelines are available to farmers and the livestock industry to improve animal health while reducing antimicrobial use [3] [4].	Your role in animal health, veterinary services, and AMR strategies is crucial for developing and implementing these guidelines [2] [5].
HORIZON-CL6-2027-02-FARM2FORK-06	A more competitive, sustainable, and transparent small-scale aquatic food production sector [6] [7].	Your oversight of aquaculture and seafood products fits perfectly. You can provide expertise on sustainable practices and regulatory compliance [8].
HORIZON-JU-CBE-2026-IAFlag-04	Resilience and strategic autonomy of EU food sectors via diversification of nutritional food ingredient sources [9] [10].	Your role in food safety and consumer protection enables you to offer regulatory guidance and conduct risk assessments on new ingredients [8].

META Prompt with ChatGPT

Improved Prompt

 Free offer ×

I have uploaded 5 documents in a folder.

- Document 2 contains the 13 CBE JU topic calls.
- Documents 1, 4, 5, and 6 contain topic calls from other work programmes.

Task:

Identify **overlapping, aligned, or relevant topic calls** between the 13 CBE JU topic calls in Document 2 and the topic calls in Documents 1, 4, 5, and 6.

Focus especially on **similar themes, objectives, or expected outcomes**.

Output requirement:

Create a **clear table suitable for printing**, where each row represents a relevant connection between a CBE JU topic and another programme topic.

Table structure:

CBE JU Topic Call (Full Title)	Related / Overlapping Topic Call (Full Title)	Expected Outcomes of the CBE JU Topic	Relevant / Overlapping Expected Outcomes from the Other Topic Call
--------------------------------	-----------------------------------------------	---------------------------------------	--------------------------------------------------------------------

Instructions:

- Use the **full official titles** of all topic calls.
- Extract the **expected outcomes** directly from the documents where possible.
- Only include **meaningful overlaps or strong thematic alignments**.
- If multiple topics overlap with the same CBE JU call, include **multiple rows**.
- Keep wording **concise so the table fits well when printed**.
- Highlight **clear thematic links** such as biomass, circular bioeconomy, biorefineries, sustainable materials, waste valorisation, etc.

1	Topic Call	Relevant Expected Outcomes	How Silfurgen ehf. Can Contribute
2	<p>HORIZON-MISS-2026-03-OCEAN-02: Addressing aquatic pollution and biodiversity loss through nature positive solutions from source to sea.</p>	<ul style="list-style-type: none"> • Innovative biotechnology and Nature-based Solutions are developed and made available to communities... 1 • Test and upscale systemic and innovative combinations of nature-positive approaches... 2 	<p>Direct Contribution: Mussel farming is explicitly cited as a regenerative, nature-positive practice 3. Silfurgen provides the fundamental enabling technology—high-quality, selectively bred spat—required to scale up these nature-based solutions. Your hatchery can supply the juvenile stock needed for large-scale demonstration projects aimed at water purification and ecosystem restoration.</p>
3	<p>HORIZON-MISS-2027-03-OCEAN-02: Circularity of seafood supply chain.</p>	<ul style="list-style-type: none"> • Measurable improvements in the competitiveness and increased environmental sustainability of the EU's fisheries and/or aquacul- 	<p>Value Chain Enabler: You directly address competitiveness and sustainability 5. Your reliable, year-round supply of selectively bred spat de-risks the entire mussel farming value chain, leading to higher yields and</p>

*Horizon Europe - Work Programme 2026-2027
Missions*

- Based on a sound understanding of the main pollution sources and the connectivity between watersheds, coastal and marine ecosystems, identify, assess and make available to stakeholders the most regionally relevant and effective nature-positive solutions and combinations thereof to address pollution and biodiversity loss, considering their relevance under future climate and biodiversity scenarios;
- Test and upscale systemic and innovative combinations of nature-positive approaches, solutions and new technologies to reduce nutrient, chemical, plastic including microplastic pollution, considering together functionally connected freshwater, coastal and marine ecosystems;
- Conduct demonstration activities in at least 4 sites from source to sea covering the most relevant socio-ecological systems in one of the Mission basin-scale lighthouses, with direct and strong involvement of public bodies and other relevant socio-economic stakeholders to ensure their support for implementing, maintaining and financing nature-positive solutions in their territories. The scale and range of the site(s) for demonstration activities should be ecologically relevant and impactful for achieving the Mission 2030 objectives;
- Monitor pollution levels in each demonstration site to assess the impact and contribution of the activities towards the Mission objectives and targets, including removal rates, retention capacities, ecosystem responses and modelling techniques, to ensure monitoring of the activities and inform adaptive management. Projects should design monitoring strategies that extend beyond the project duration, contributing to long-term datasets crucial for assessing cumulative impacts, ecosystem recovery trajectories and informing future interventions. The monitoring should make use of, adapt or exploit relevant sensing and modelling tools, EU digital infrastructures, such as the EU Digital Twin Ocean, Copernicus and EMODnet;



- show active involvement of fishers since the start of the project;

200	COM(2025) 75 final
201	COM(2025)281
202	COM(2023) 102 final

*Horizon Europe - Work Programme 2026-2027
Missions*

- test and demonstrate on the ground sustainable and inclusive science-based approaches and solutions for the co-management of marine and freshwaters resources.

Active engagement of fishers in habitat protection and restoration could include e.g.: regenerative practices; ecosystem management approaches; measures for prevention and control of invasive species; fish stock recovery plans; sustainable low-impact fishing operations, technologies and tools; multipurpose use of marine space as well as citizen science actions to raise fishers' awareness and involve them in all steps from data collection to their assessment and use. Projects are encouraged to undertake actions to enhance carbon sequestration capacities of marine and coastal ecosystems, including mangroves, saltmarshes and seagrass habitats. These actions should align with the Q.U.A.L.I.T.Y criteria (Quantification, Additionality, Long-term storage, and Sustainability) set out in the Regulation (EU) 2024/3012, which establishes a voluntary Union certification framework for permanent carbon removals, carbon farming, and carbon storage in products and engage with recognised certification bodies/schemes to provide evidence of carbon sequestration capacities.

Each proposal should identify explicitly the basin being addressed, i.e.: 1. Atlantic and Arctic sea basin or 2. Mediterranean Sea basin or 3. Baltic and North Sea basin or 4. Danube River

Að finna samstarfsaðila

Þú hefur fundið „þín“ tækifærin.

Þú veist hverju þú ert að leita að

Kortleggðu: sérfræðipækkingu þína, innviði og mannauð og hafðu það á hreinu hvernig þátttaka þín bætir við og styrkir heildarmyndina.



Að finna samstarfsaðila

Byrjaði á að skoða þitt eigið tengslanet [Partner Search Database](#)

B2match tól Landstengiliða Netverkanna [sjá hér](#)

MATIS OHF
Research Organisation
REYKJAVIK Iceland
Projects: 55 Partner search announcements: 0

Funding & Tenders [Portal](#). *Leitaðu í safni lokaðra tóþík kalla! Finndu tóþík köll sem skarast á við þitt tóþík kall. Þeir félagar sem fengu styrk gætu verið að sækja um í sama tóþík kall.*

Gáttin er tengd [Cordis](#) gagnasafninu. Ítarlegar upplýsingar um árangur og afurðir styrktra verkefna.

Useful documents and links

Complete newcomer guide [pdf](#) ~5 min read

Finding the right consortium [pdf](#) ~ 8 min read

Cheatsheet / annotated template its good to know what an proposal entails, start at page 38. Set aside 2 hours for this read [pdfs](#)

Open Science how to address it in the proposal and EU supporting projects, [site](#)

National Contact Point networks:

[Greenet](#) – Cluster 5

www.CARE4BIO.eu – Cluster 6



Annotated templates - 2025 update



Takk fyrir

&

Gangi ykkur vel

Ekki hika við að hafa samband

kolbrun@rannis.is