

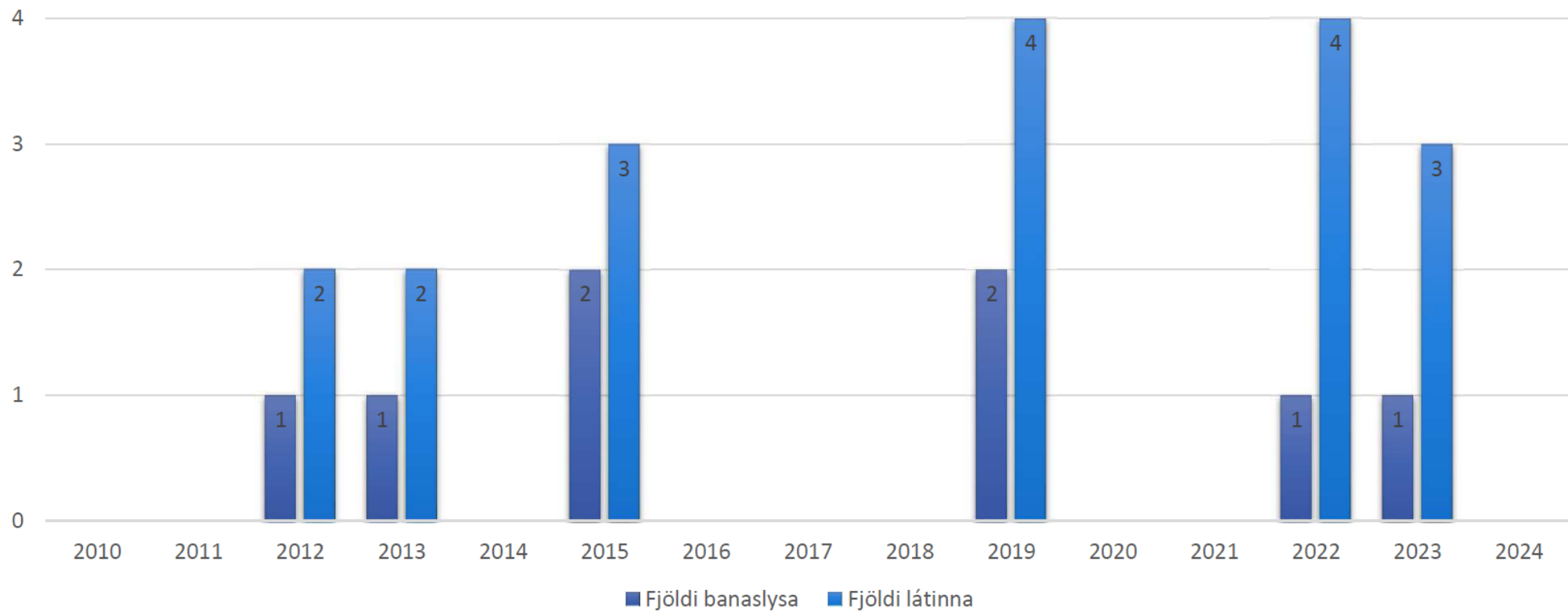
Aviation Annual Safety Review 2024

SSP / IASP

Tier 1 - Safety Performance Indicators

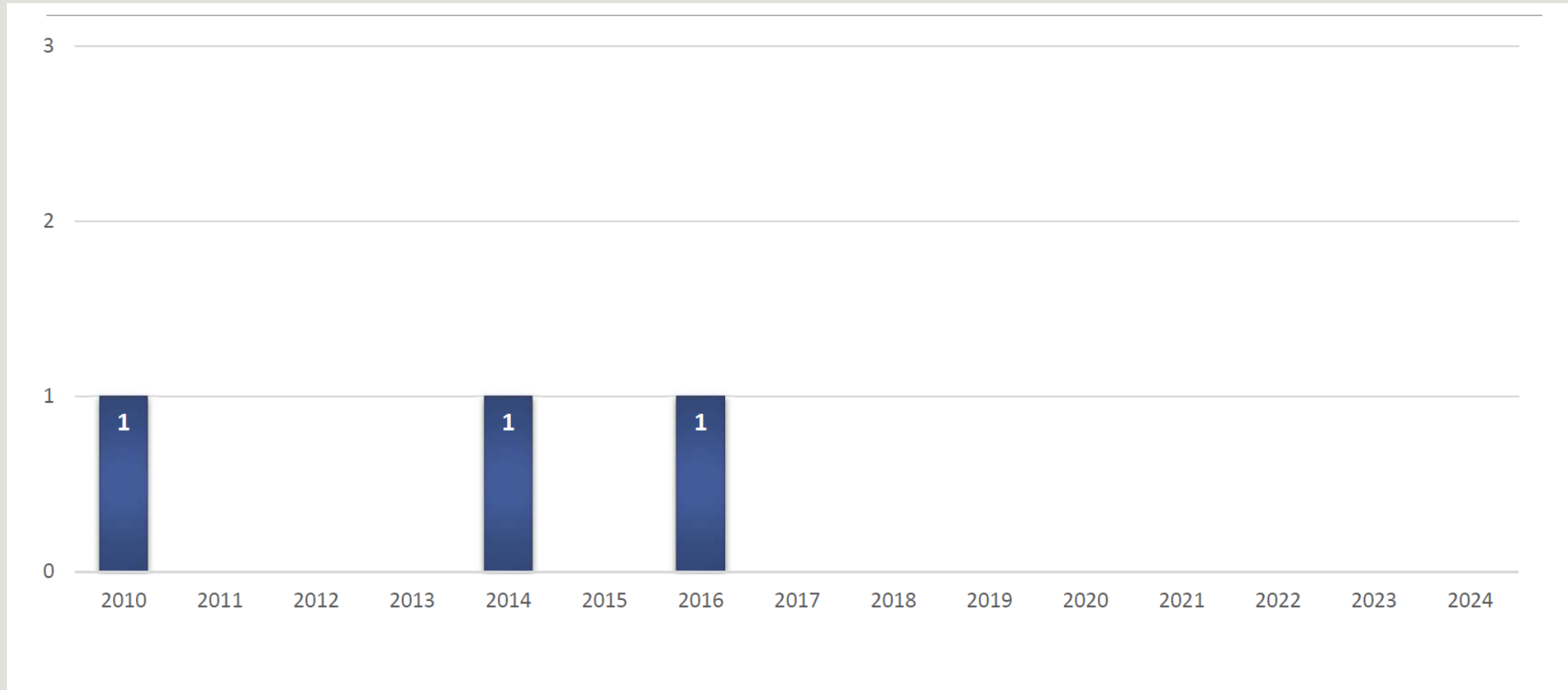
Fatal accidents 2010 – 2024

Tier 1



Helicopter Accidents 2010 – 2024

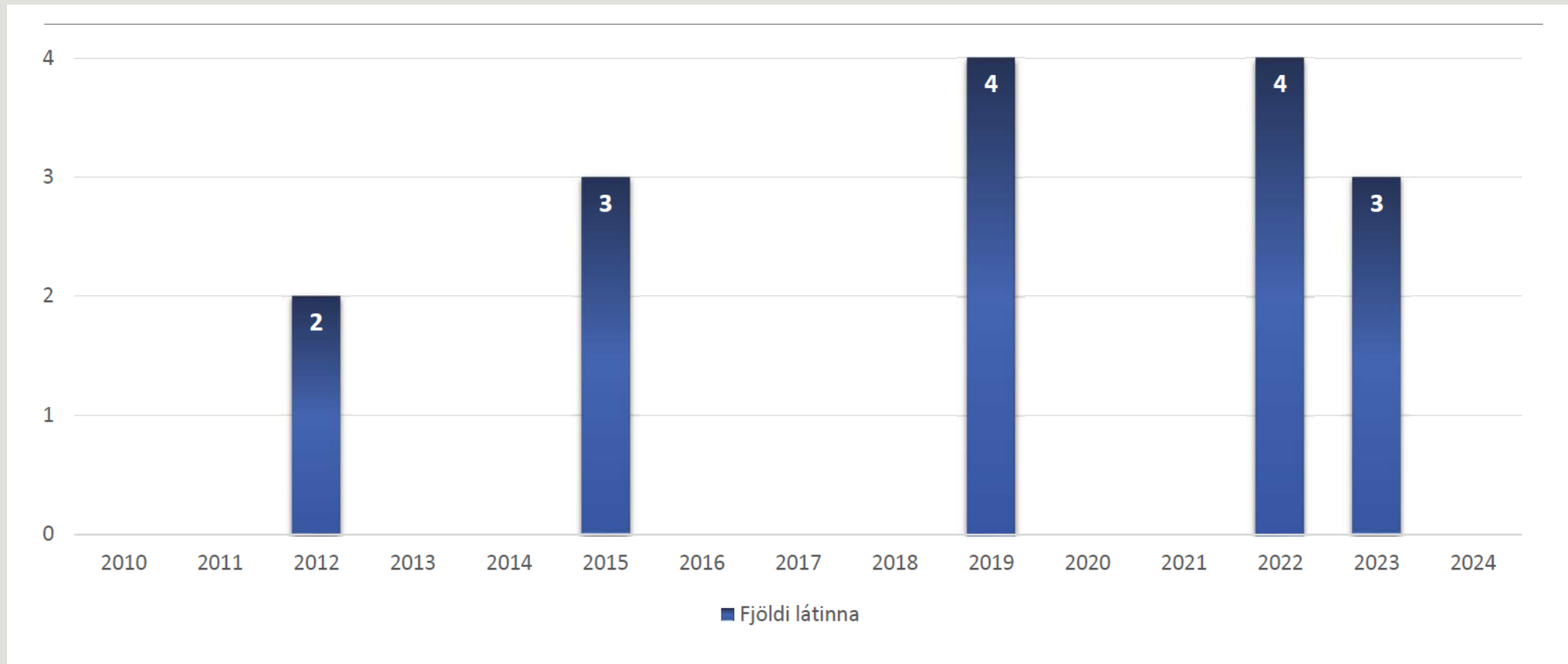
Tier 1



Fatalities in General Aviation

2010 – 2024

Tier 1



Fatal Accidents in Commercial Aviation Transport 2010 – 2024

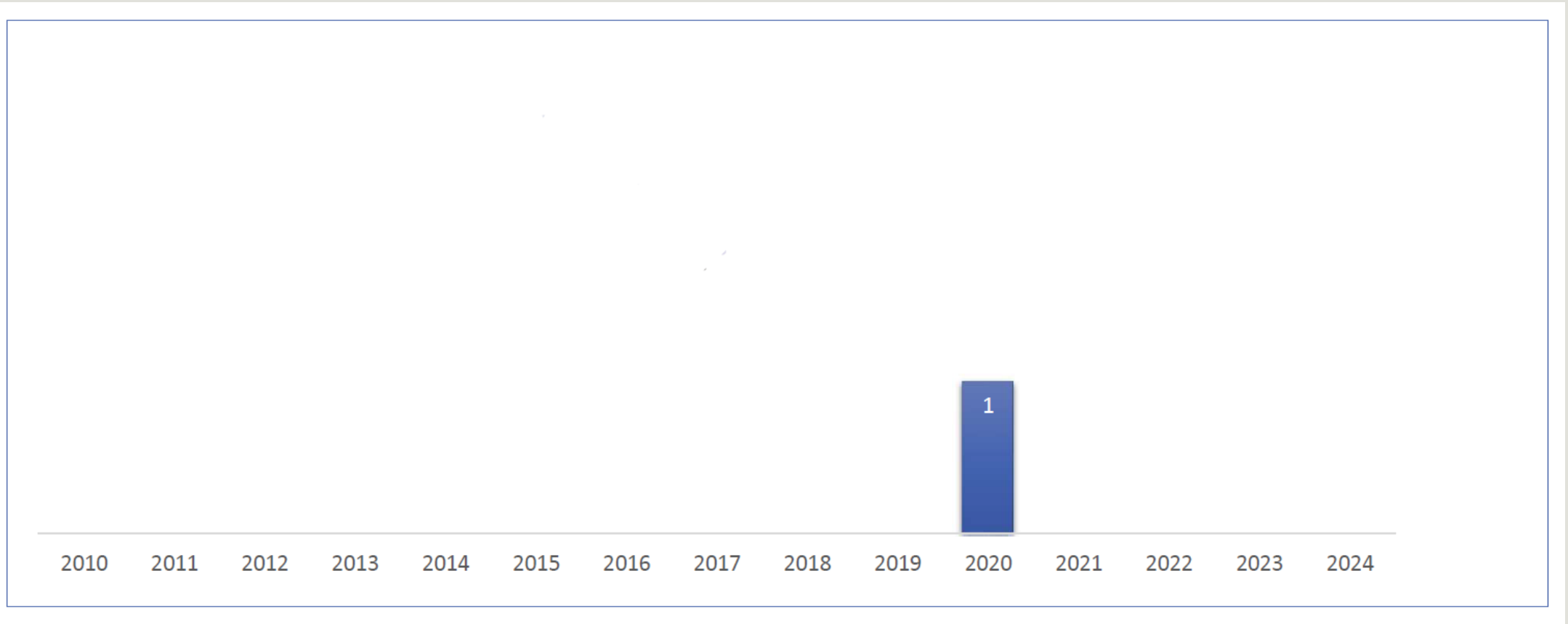
Tier 1

Ekkert banaslys í flutningaflugi

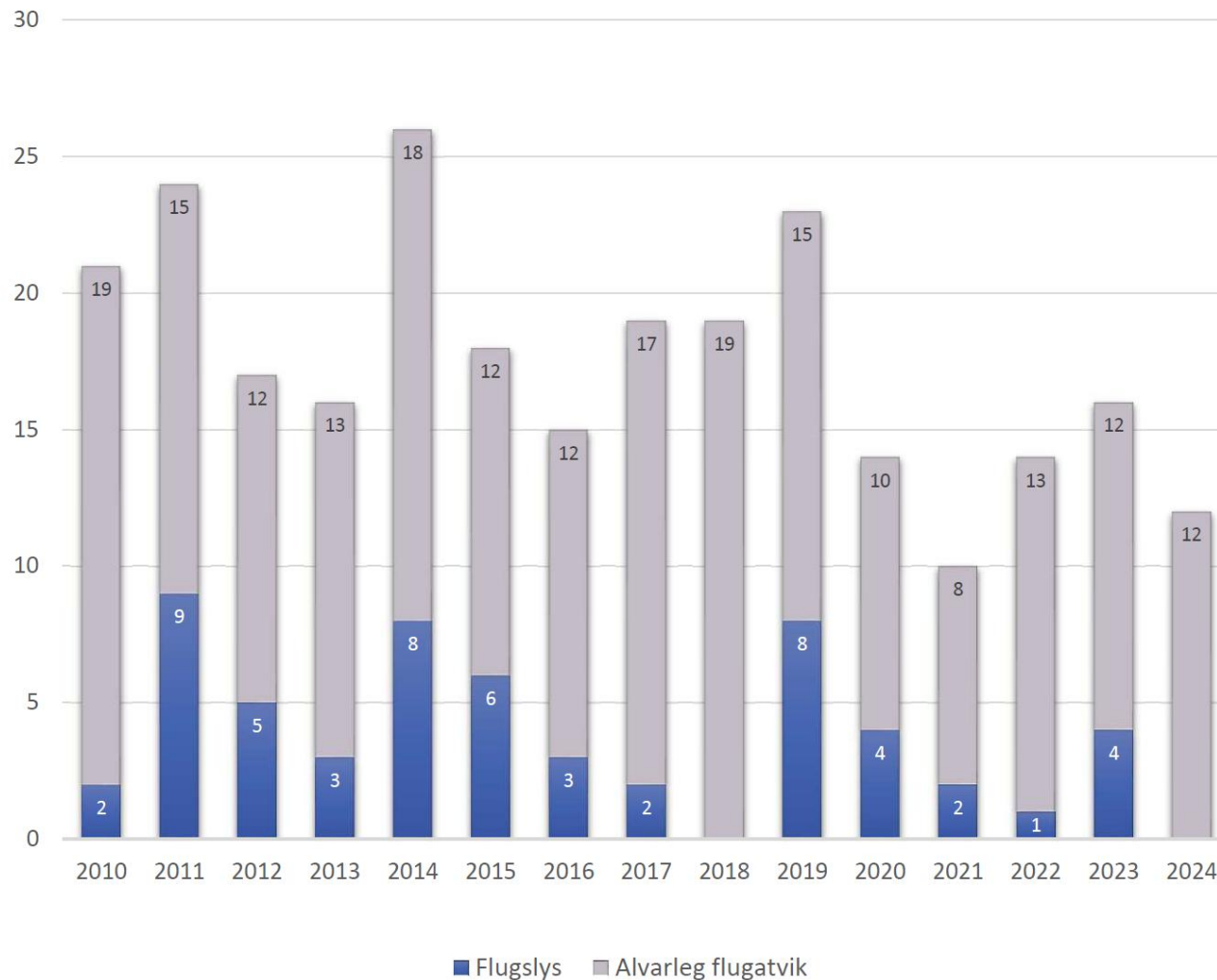
2010	2011	2012	2013	2014	2015	2016	2017	2018	2019	2020	2021	2022	2023	2024
------	------	------	------	------	------	------	------	------	------	------	------	------	------	------

Accidents in Commercial Transport Aviation 2010 – 2024

Tier 1

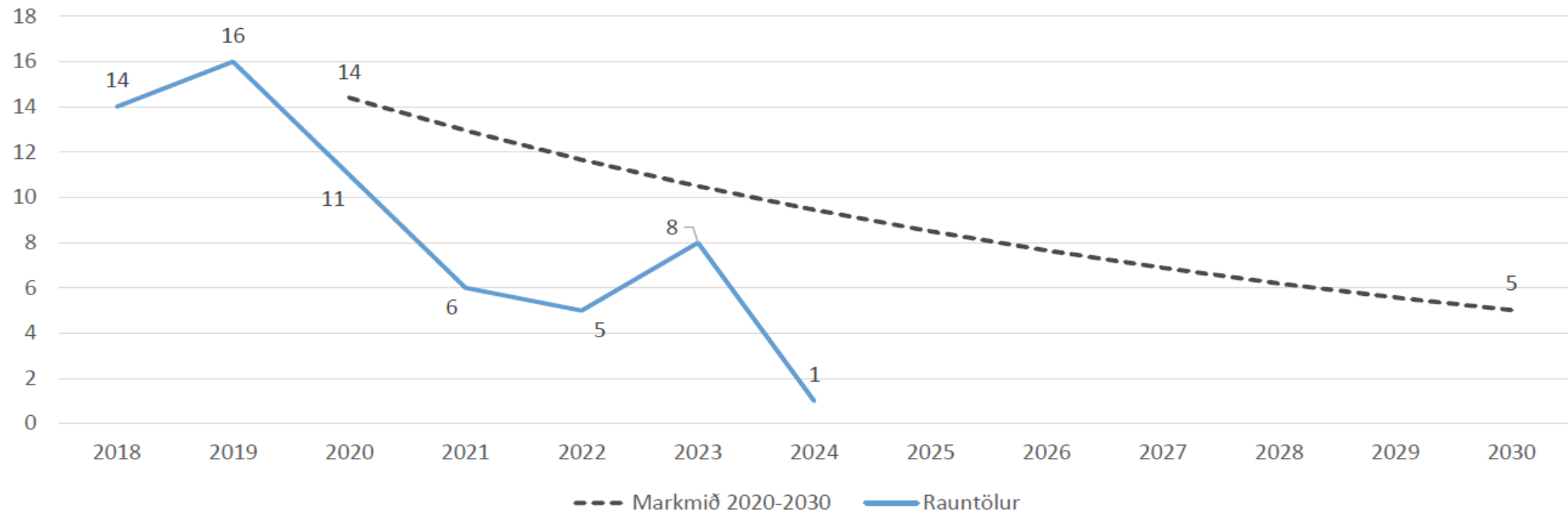


Accidents and Serious Incidents 2010 – 2024

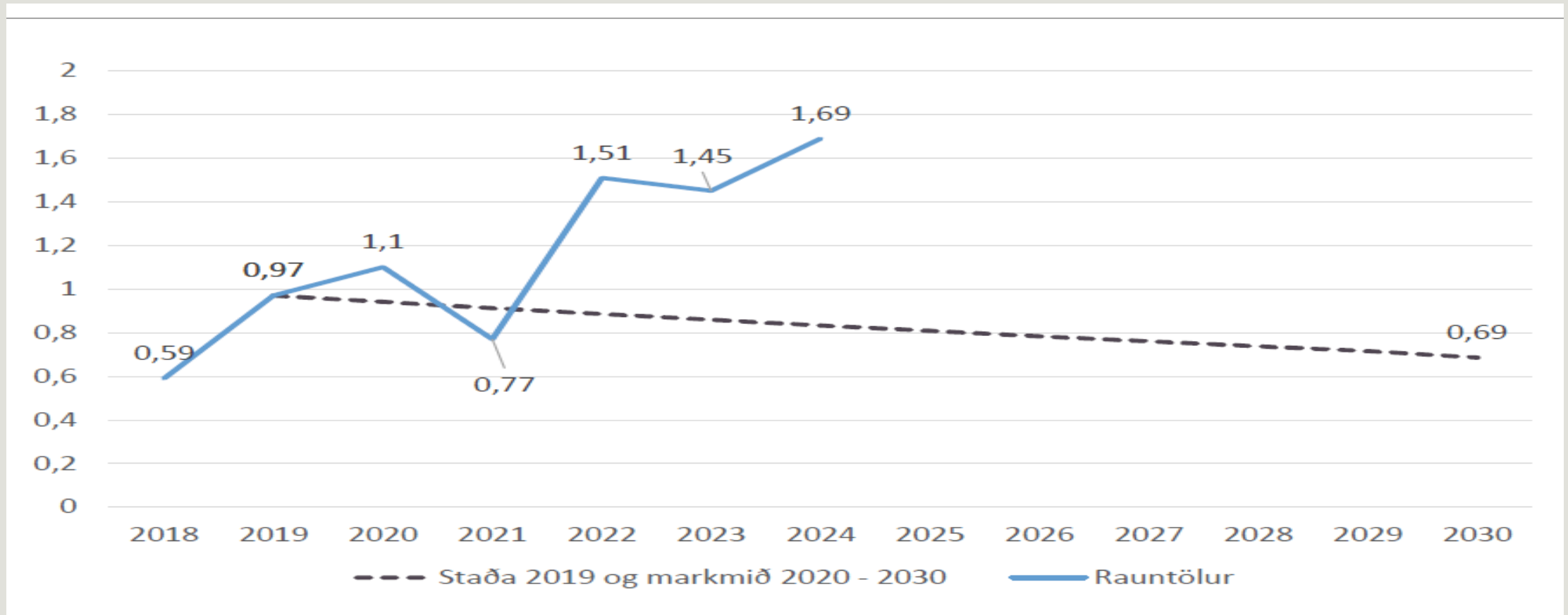


Accidents and Serious Incidents in General Aviation

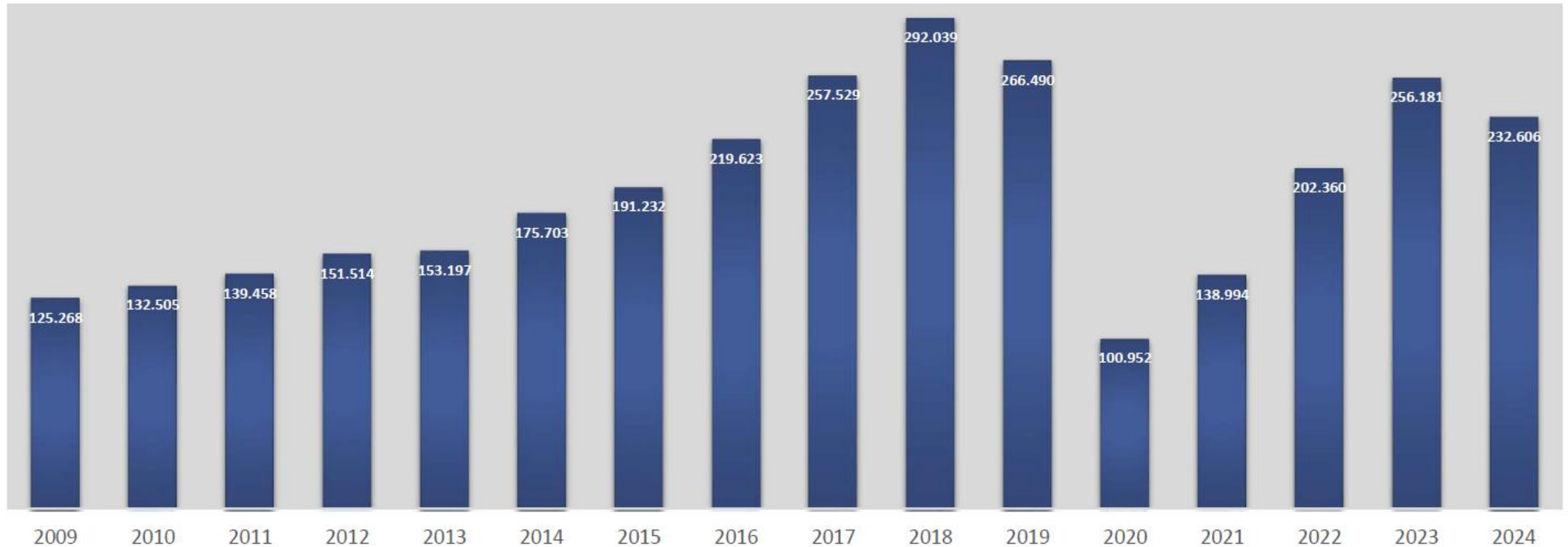
Target to 2030 Rate per 10.000 flights



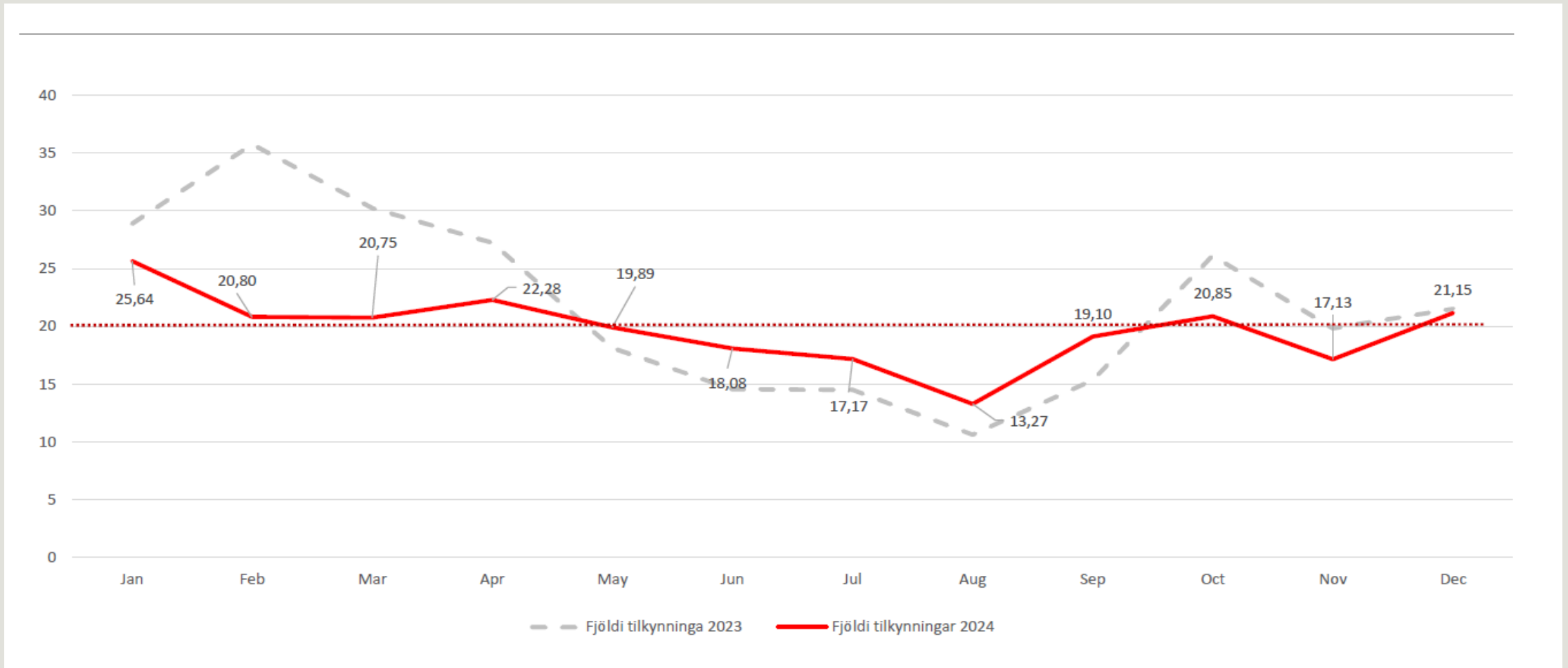
Accidents and Serious Incidents in Commercial Aviation Transport Target to 2030 Rate per 10.000 flights



Flight hours in Commercial Aviation Transport and General Aviation



Occurrence reporting Rate per 1.000 movements



IPAS 2023-2025

Key Risk Areas - Lykiláhættusvið

The top three KRAs identified in EASA ASR 2023 for CAT operations are:

KRA 1	KRA 2	KRA 3
Airborne Collision	Runway Excursions	Aircraft upset

The top three KRAs identified in the ICETRA ASR 2024 for CAT operations are:

KRA 1	KRA 2	KRA 3
Runway Excursions	Runway Incursions	Aircraft upset