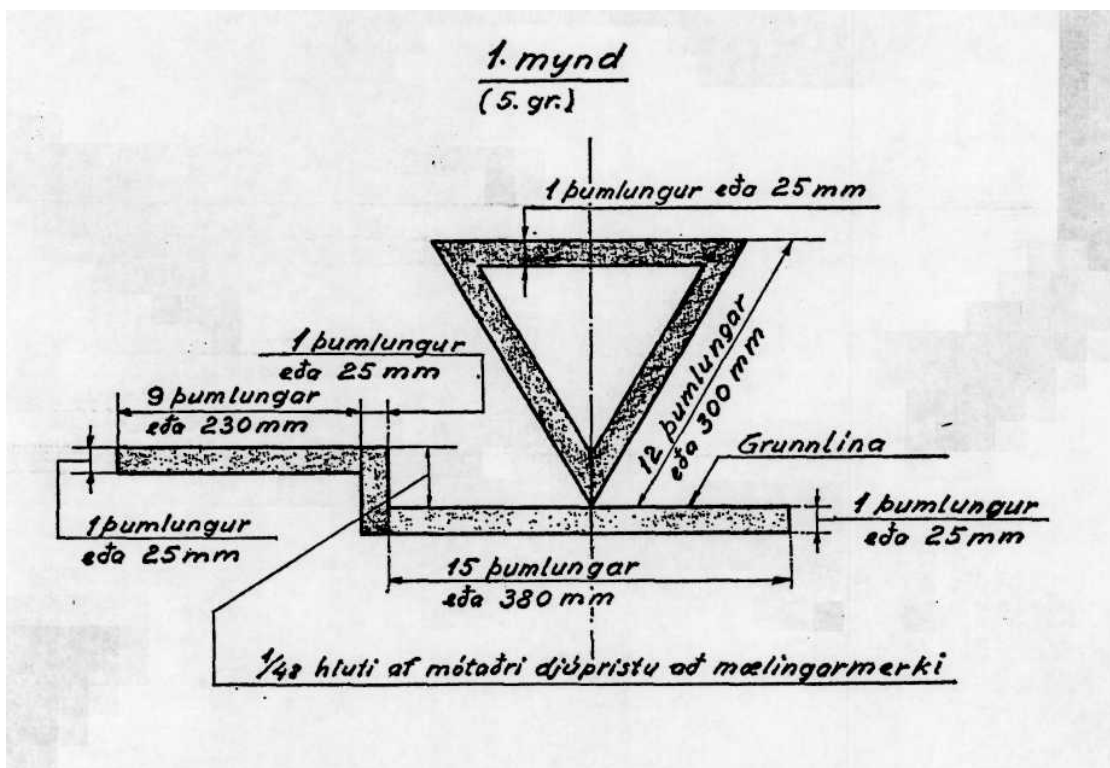


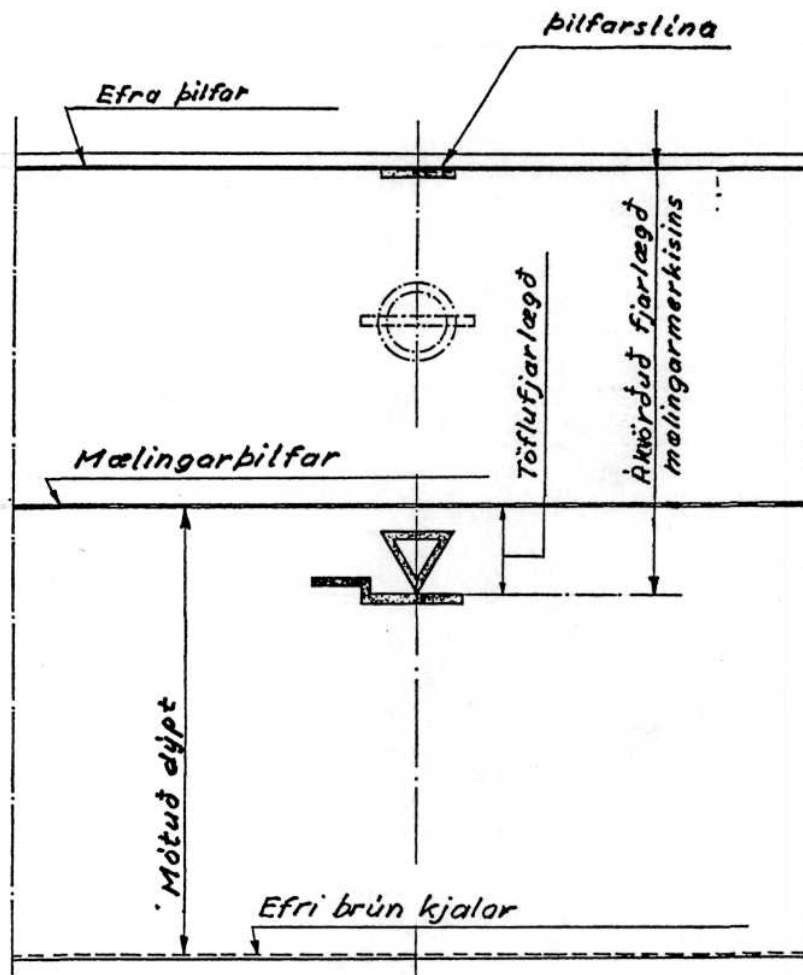
Myndir

við reglur um skipamælingar.

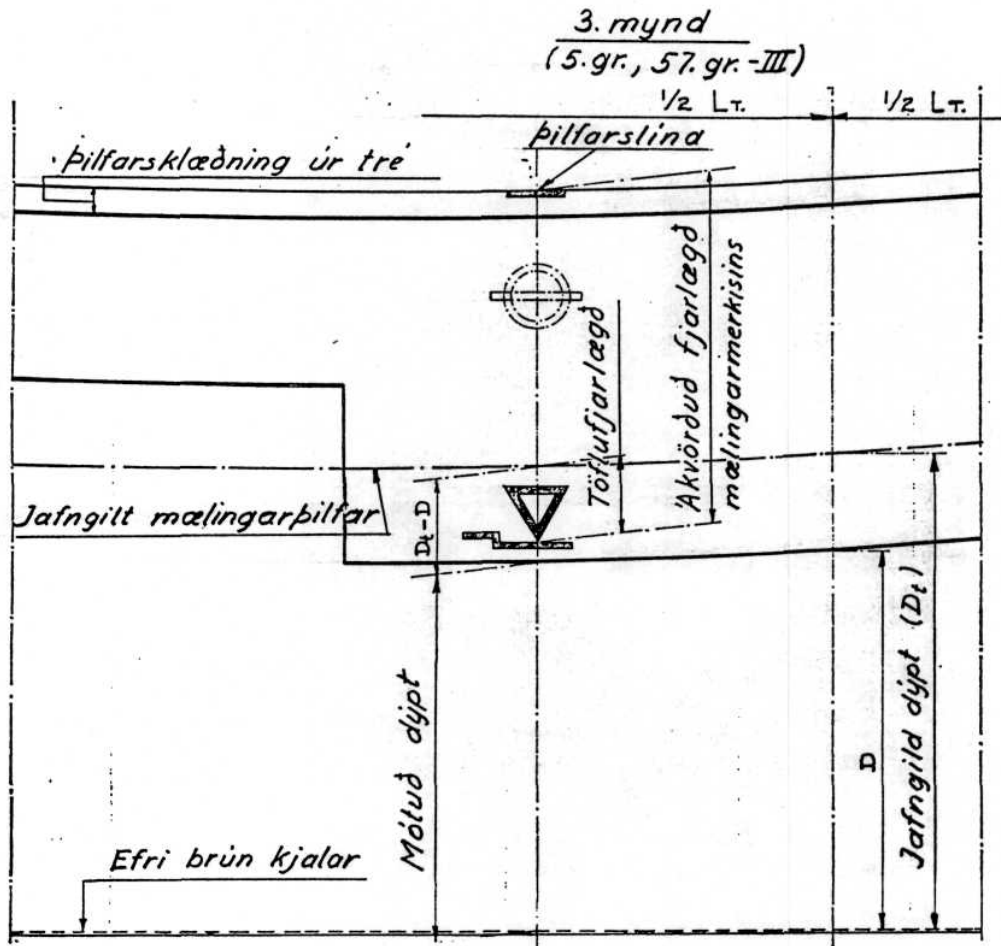


Reglur um skipamælingar, nr. 167/1967, eru aðgengilegar á:
http://www.sigling.is/Uploads/FileGallery/Log og reglur/167_1967.pdf

2. mynd
(5. gr., 57. gr. - III)



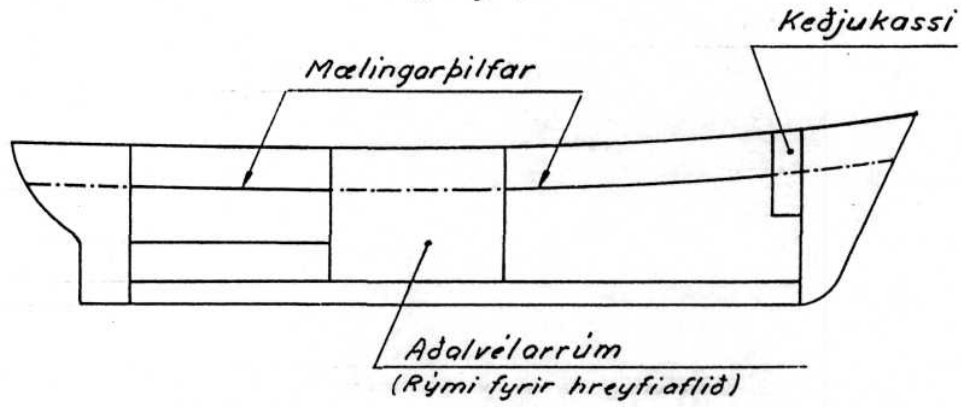
Ákvörðud fjarlægð mælingarmerkisins er töflu fjarlægðin að viðbættri löðrétu fjarlægðinni frá efri enda mótadrar djúptar að efri brún þilfarlinunnar.



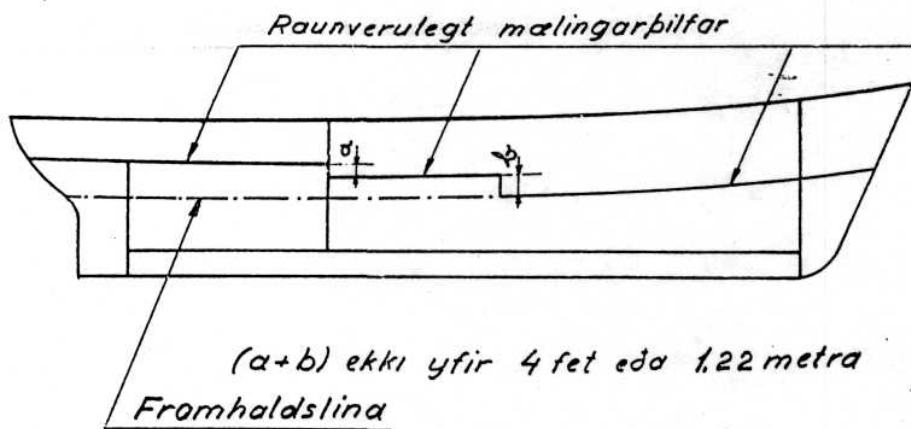
Akvörðud fjarlægð mælingarmerkisins er töflufjarlægðin að viðbætri lóðrettu fjarlægðinni frá jafngildu pillari að efri brún pillarslinu (sjá einnig 75. og 76. mynd).

4. mynd

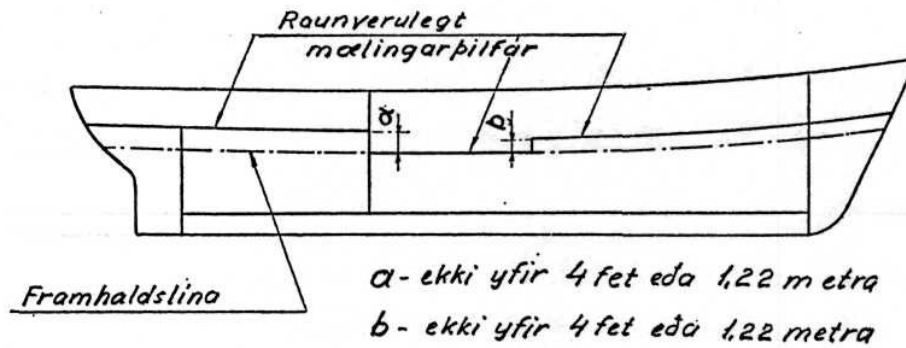
(10. gr.)

5. mynd

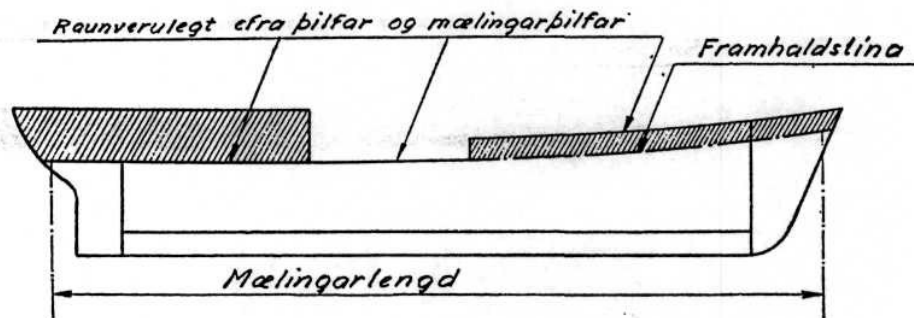
(10. gr.)



6. mynd
(10. gr.)

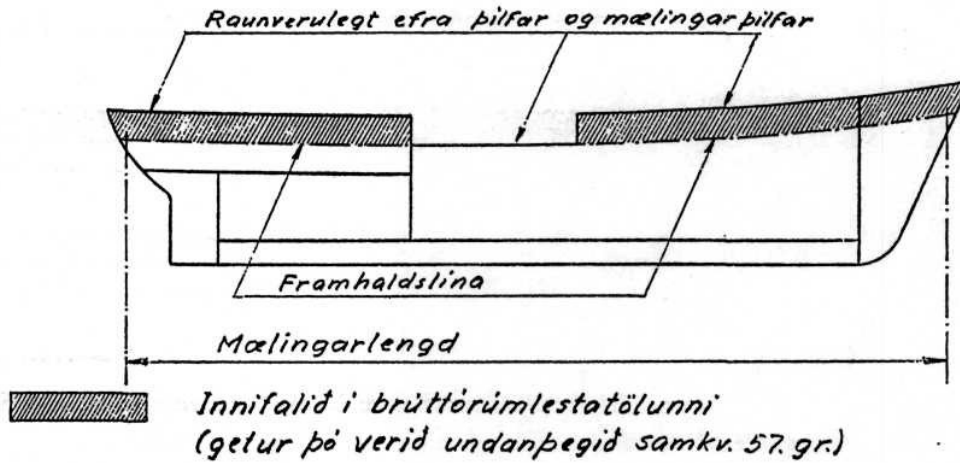


7. mynd
(15. gr. - 46. gr.)

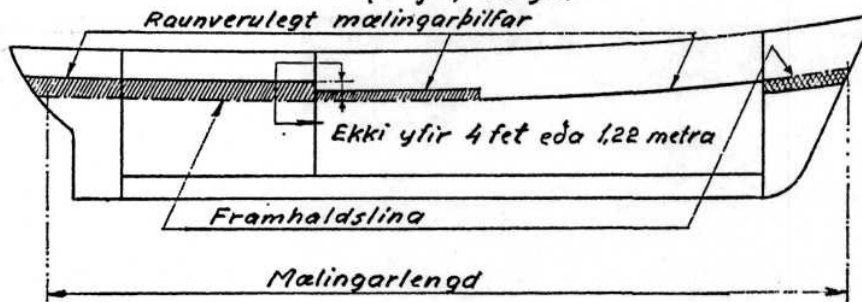


Innifalid í brúttórúmlestatölunni
(getur þó verið undanþegid samkv. 57. gr.)

8. mynd
(15.gr. 46.gr.)



9. mynd
(15.gr. 46.gr.)

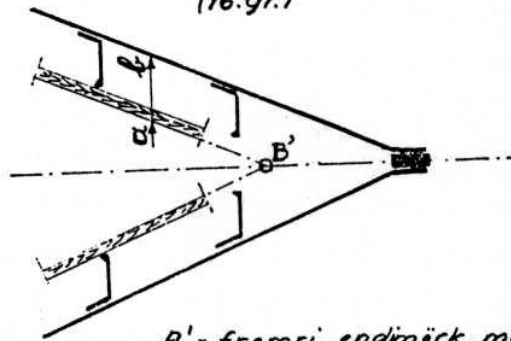


Við ákvörðun mælingarlengdarinnar skal ekki tekið tillit til þess hluta þilfars sem framman árekstrarþils liggur lægra en aðrir hlutar þilfarsins.



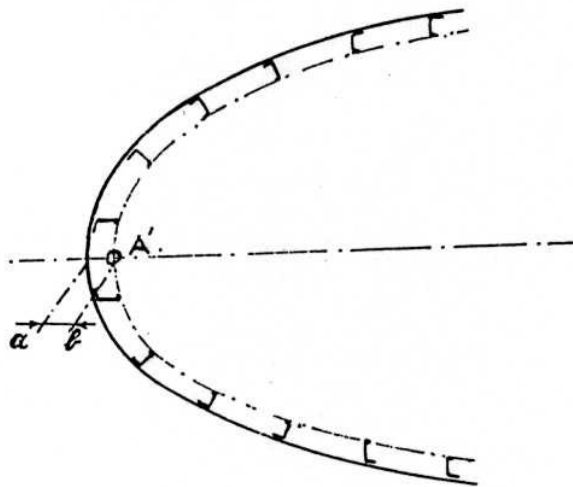
Innifalið i rúmlestatölunni undir þilfari

10. mynd
(16. gr.)

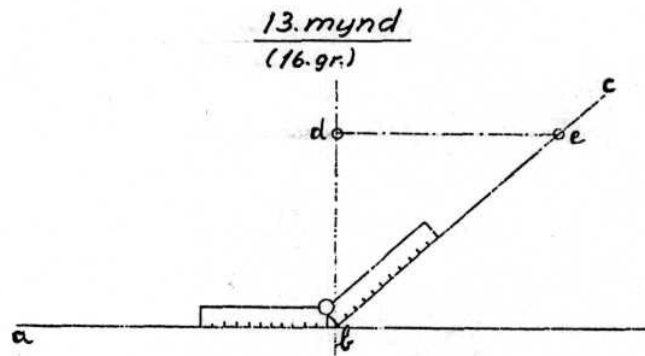
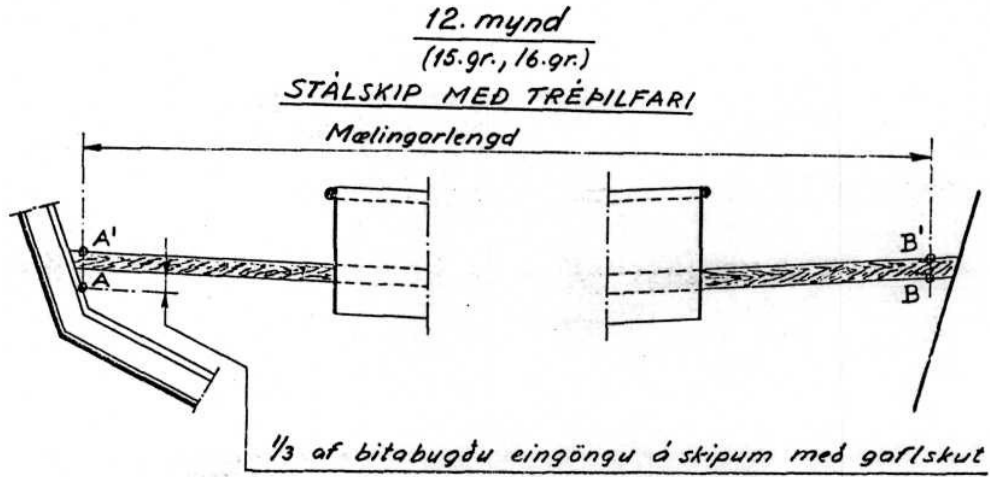


B' = fremri endimörk mælingarlengdarinnar á efra fleti mælingarþillarsins.
 ab = djúpt bands + þykkt innsúðar, mælt lárétt

11. mynd
(16. gr.)

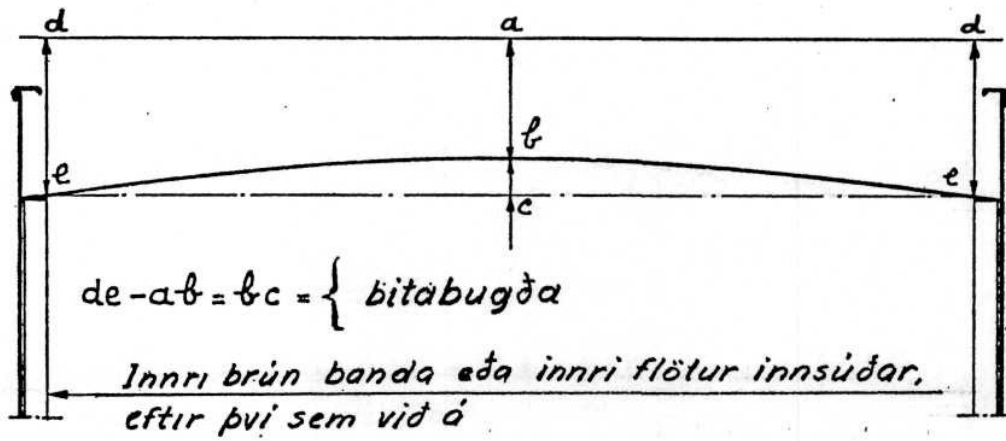


A' = aftari endimörk mælingarlengdarinnar á efra fleti mælingarþillarsins.
 ab = djúpt bands, mælt lárétt (engin innsúð).

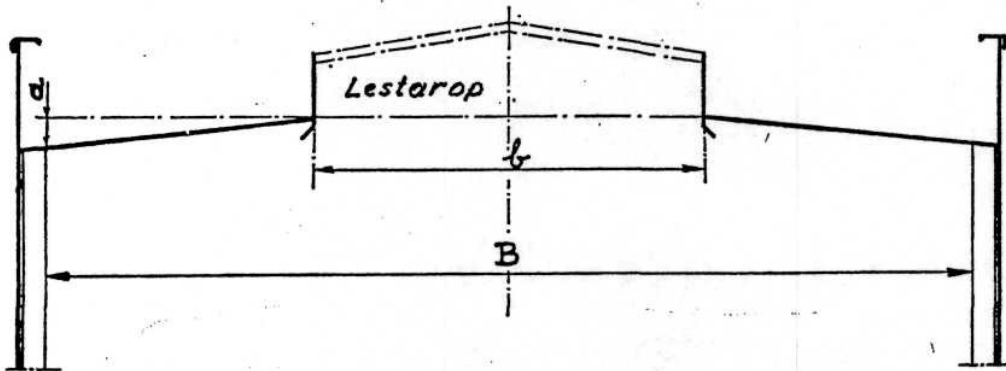


a b c er loti bógs (framstefnis) eða aflurstefnis (skuts).
b c er aflurhlíð framstefnis eða innhlíðin á plötuklæðningu skuts.
a b er efri flötur mælingarpilfarsins.
b d er þykkt mælingarpilfarsins.
 Punktarnir *B'* og *A'* sem eru sýndir á 10. og 11. mynd eiga að flytjast aflur eða fram um fjarlægð jafnlangri *d e* sem samsvarar lota bógsins eða skutsins innan pilfarsþykkunarinnar.

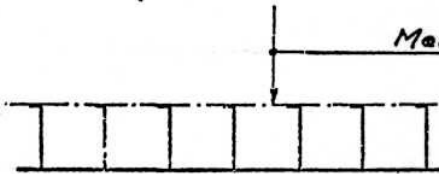
14. mynd
(17. gr., 24. gr.)



15. mynd
(25. gr.)

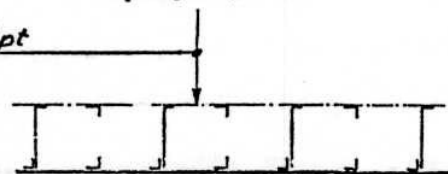


16. mynd
(26. gr. a) I. 1.)



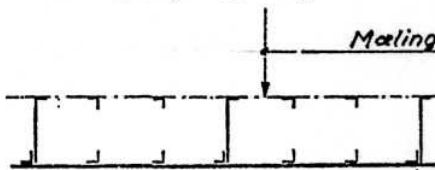
Einfaldur botn, heilir
botnstokkar á hverju bandi.

17. mynd
(26. gr. a) I. 2.)



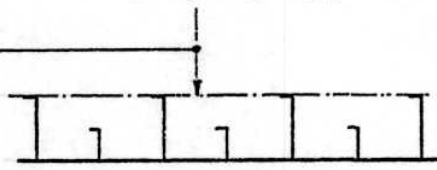
Heilir botnstokkar á öðru
hverju bandi.

18. mynd
(26. gr. a) I. 2.)



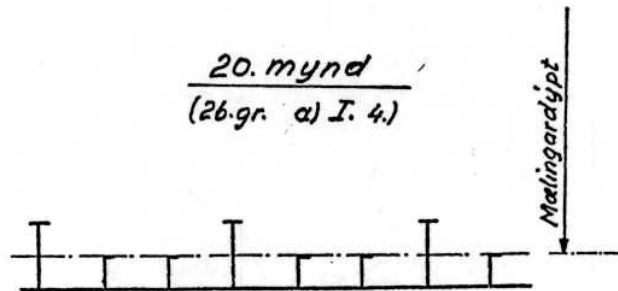
Heilir botnstokkar á þriðja
hverju bandi

19. mynd
(26. gr. a) I. 3.)



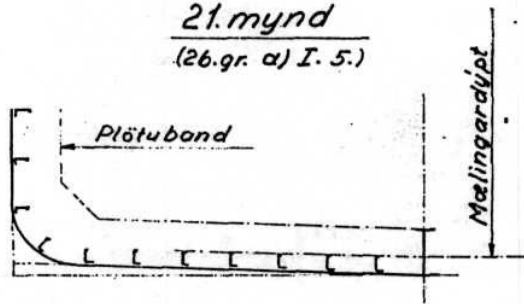
Hærrí botnstokkar á
öðru hverju bandi

20. mynd
(26. gr. a) I. 4.)

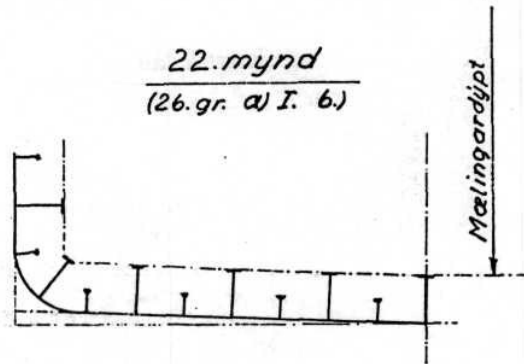


Hærrí botnstokkar með meira en
tvö bandabil á milli.

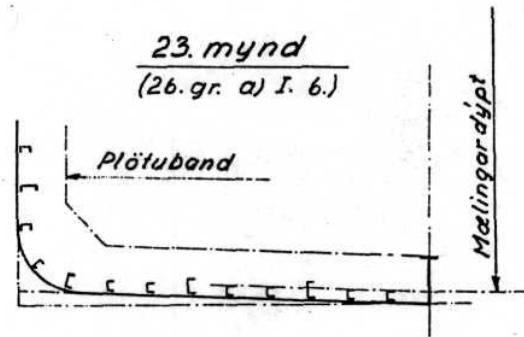
21. mynd
(26. gr. a) I. 5.)

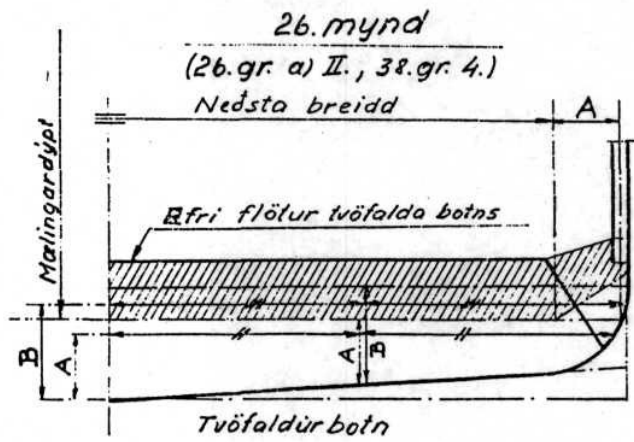
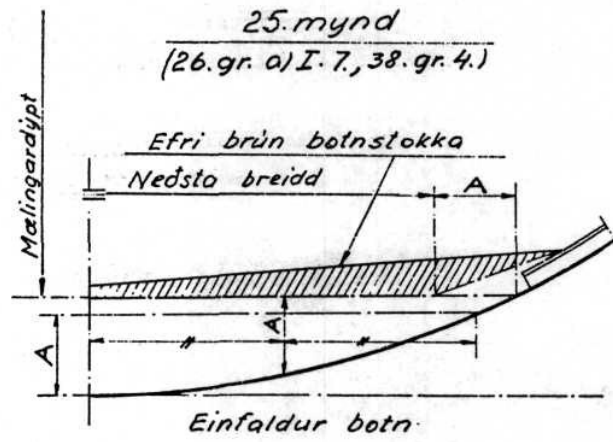
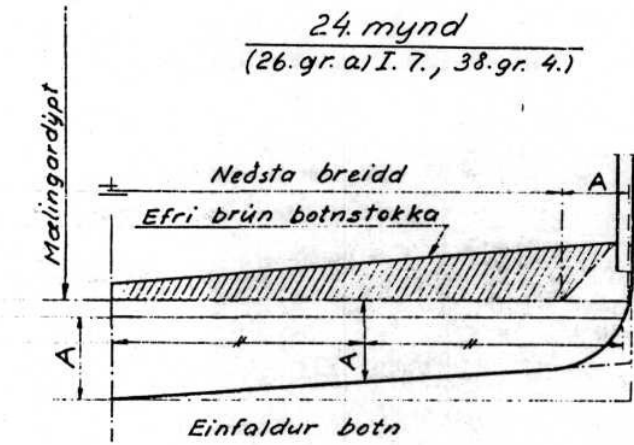


22. mynd
(26. gr. a) I. 6.)

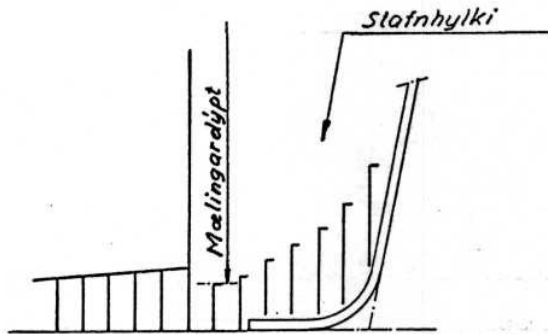


23. mynd
(26. gr. a) I. 6.)

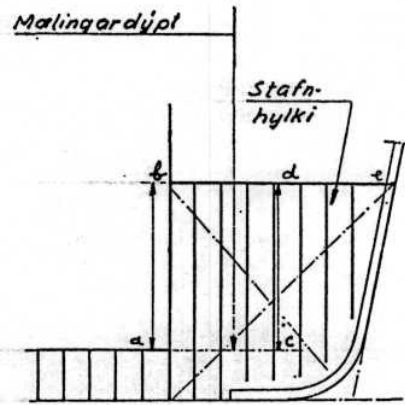




27. mynd
(26. gr. b) 1.)

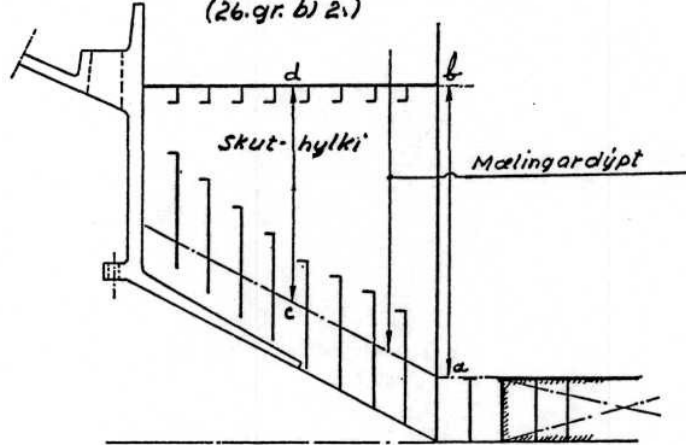


28. mynd
(26. gr. b) 2.)



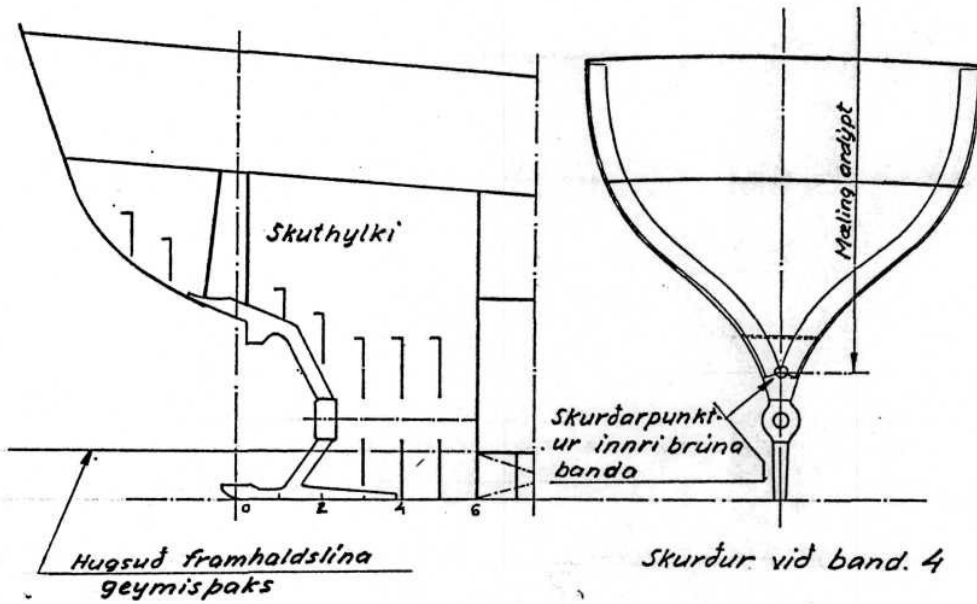
*ab, cd = dýpt stofnhylkis
þegar þetta rúm er
mælt til frádráttar.*

29. mynd
(26. gr. b) 2.)

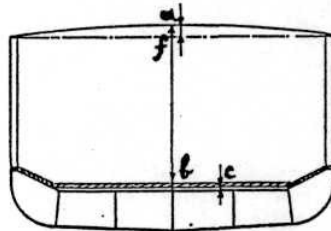


*ab, cd = dýpt skuthylkis, þegar þetta rúm
er mælt til frádráttar.*

30. mynd
(26. gr. b) 2.)



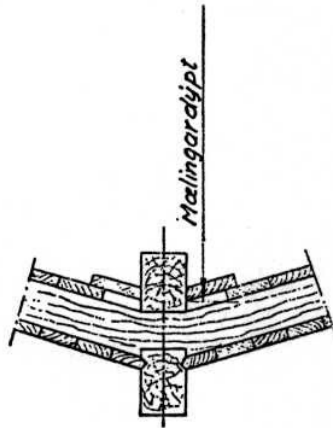
31. mynd
(27. gr.)



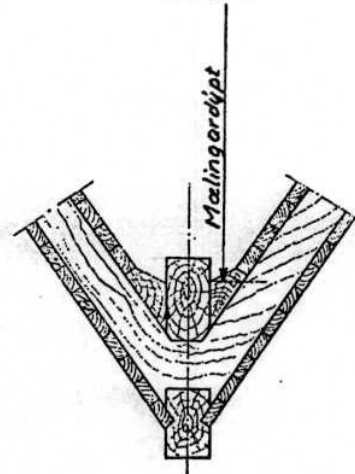
$$\text{Mælingardýpt} = ab + c - \frac{1}{3} ab$$

a = bitabugða
 c = þykkt undirlagsborða.

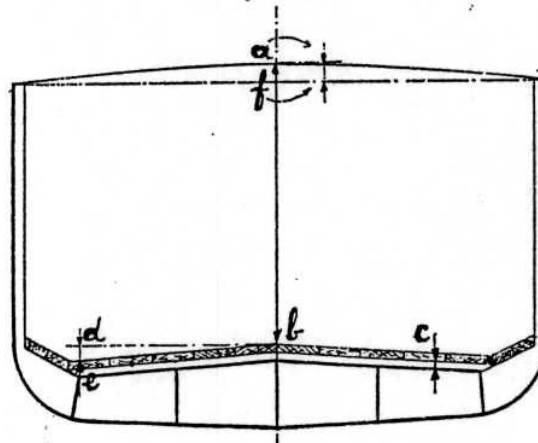
32. mynd
(27. gr.)



33. mynd
(27. gr.)



34. mynd
(28. gr. 1.)

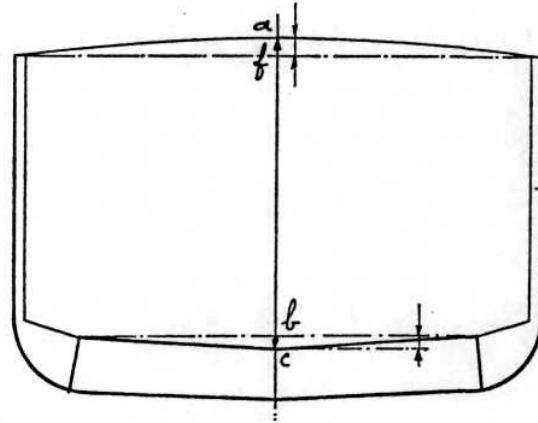


$$\text{Mælingardýpt} = ab + c + \frac{1}{2} de - \frac{1}{3} af$$

c = þykkt undirlagsborða
 de = halli geymispaks
 af = bitabugða

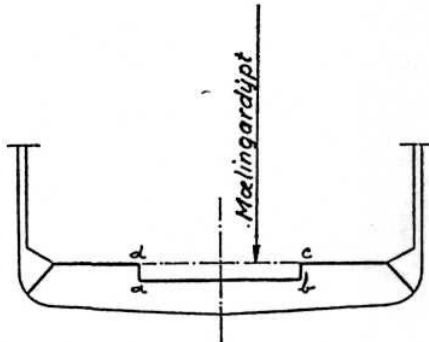
35. mynd
(28. gr. 2.)

$$\text{Mælingardýpt} = ac - (\frac{1}{2} bc + \frac{1}{3} af)$$



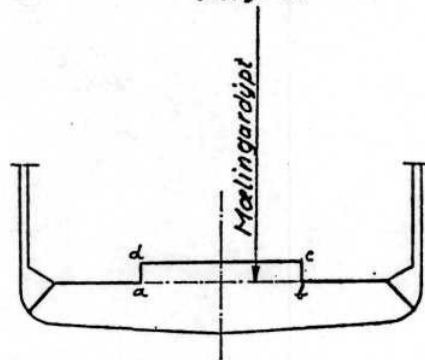
*bc = ris geymisþaks
af = bitabugða*

36. mynd
(29. gr. 1.)



*abcd skal mæla
sérstaklega og bæta
við rúmlestátöluna
undir mælingarþilfari.*

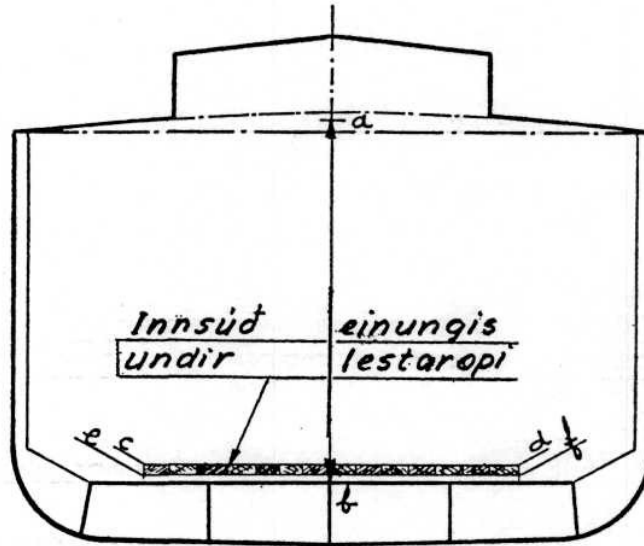
37. mynd
(29. gr. 1.)



*abcd skal mæla
sérstaklega og draga
frá rúmlestátölunni
undir mælingarþilfari.*

38. mynd

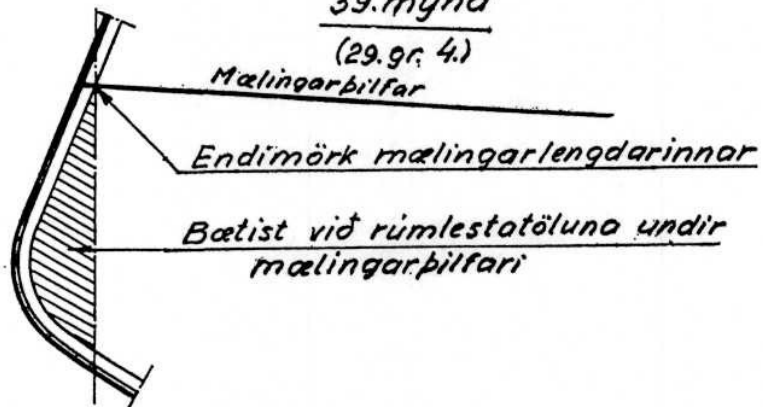
(29. gr. 2.)

 $ab =$ mælingardýpt

$cdef =$ mælist sérstaklega og dragist
frá rúmlestatölunni undir mælingarþilfari

39. mynd

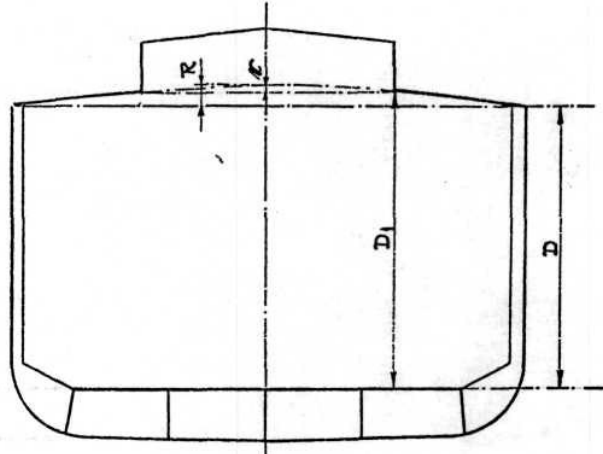
(29. gr. 4.)



40. mynd
(30. gr. 2)

Þverskurður um lestarop

$$\text{Málingardýpt} = D_1 + r - \frac{1}{3}R \text{ eða } D + R - \frac{1}{3}R$$

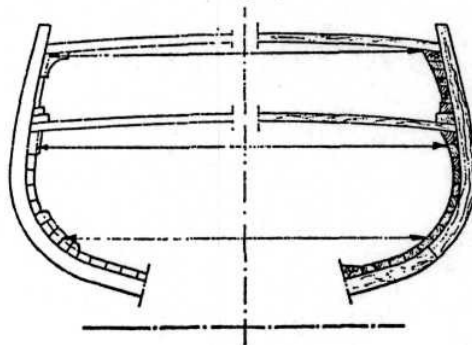


R = öll bitabugðan.

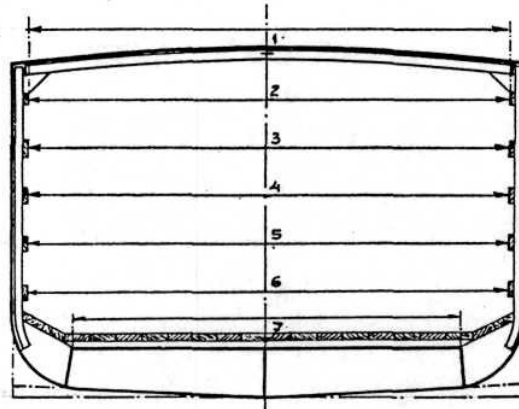
r = bitabugðan innan lestaropsbreiddarinnar.

R og r eru mæld við báða endakarmana. Ef þau mál eru ekki eins, skal bitabugðan, sem er notuð við að finna málingardýptina, fundin hlutfallslega við bitabugðurnar við endakarmana eftir fjarlægð þverskurðarins frá endakörmunum.

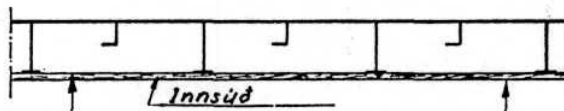
41. mynd
(34. gr.)



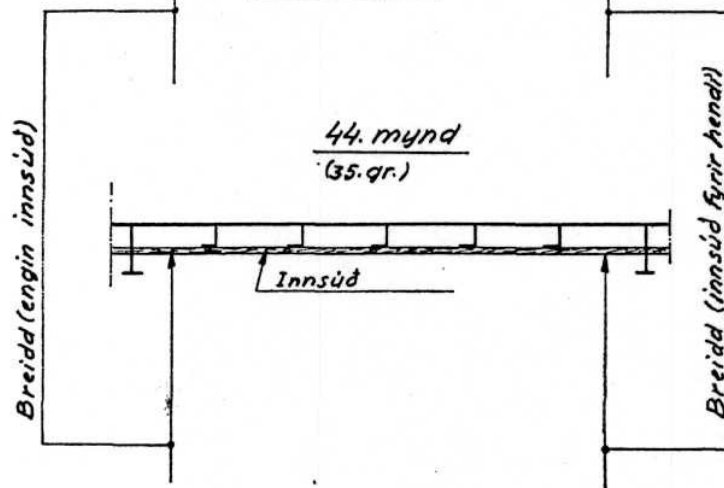
42. mynd
(34. gr.)



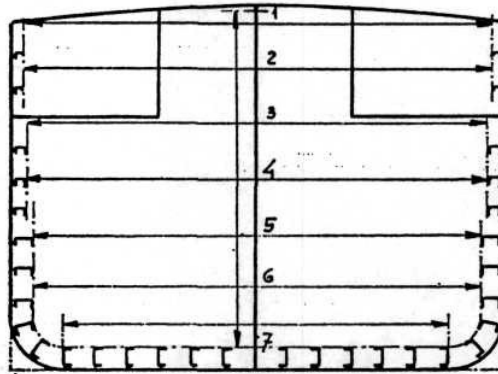
43. mynd
(35. gr.)



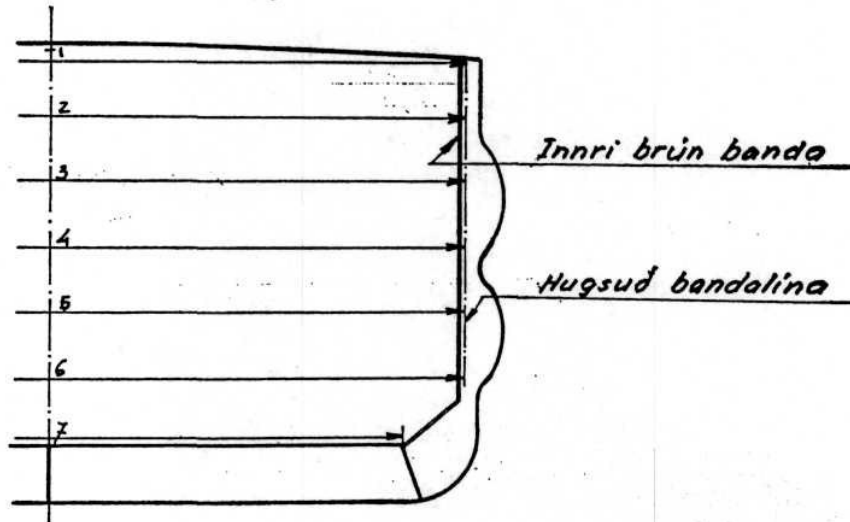
44. mynd
(35. gr.)



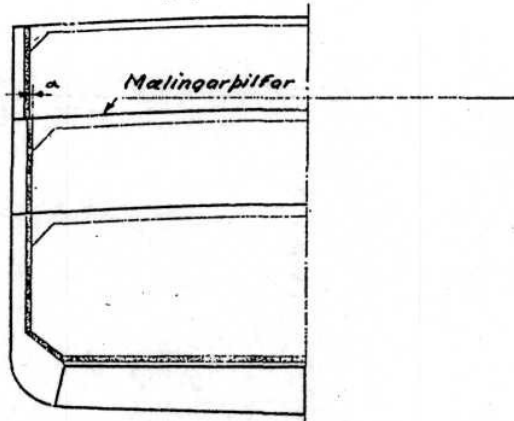
45. mynd
(35. gr.)



46. mynd
36. gr.



47. mynd
(37.gr.)



α = leidrétting á efstu breidd, þegar hún hefur verið mæld á efra fleti mælingarpilfarsins að innsúð í millipilfarsrúmi.

48. mynd
37.gr.

Fláar hlíðar

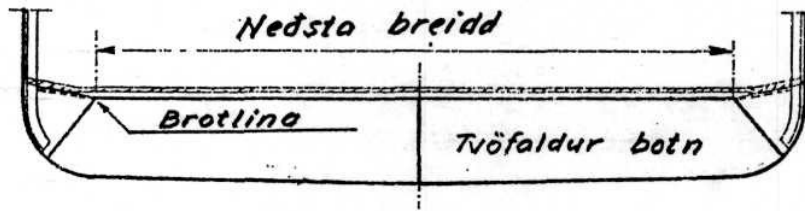
Aðkrepptar hlíðar



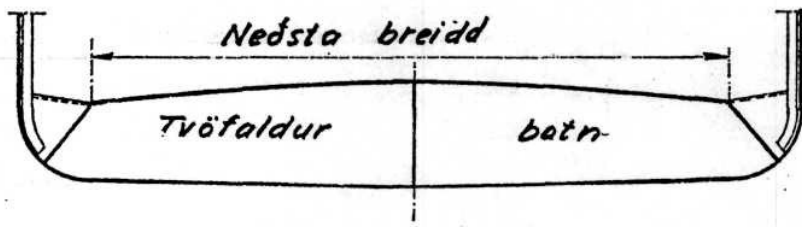
α = leidrétting á efstu breidd, þegar hún hefur verið mæld á efra fleti mælingarpilfarsins.

49. mynd

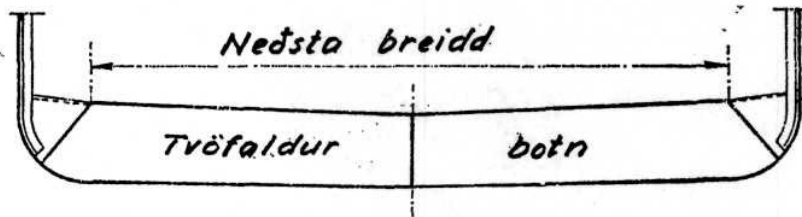
(38. gr. 1.)

50. mynd

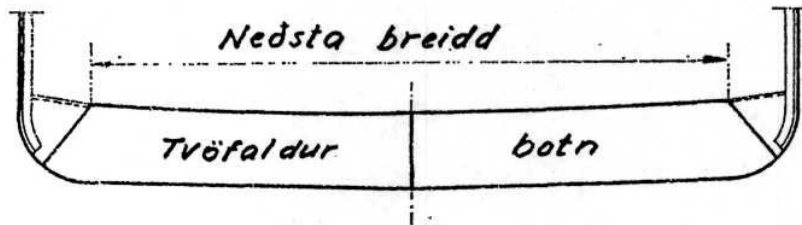
(38. gr. 1.)

51. mynd

(38. gr. 1.)

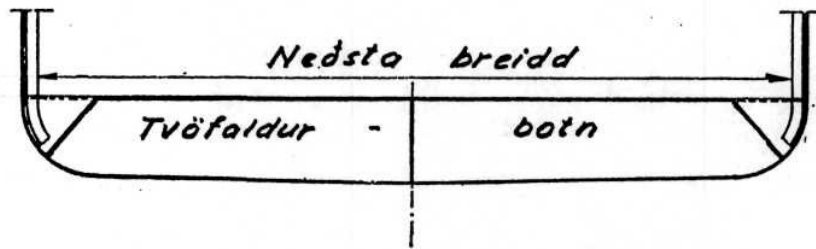
52. mynd

(38. gr. 1.)

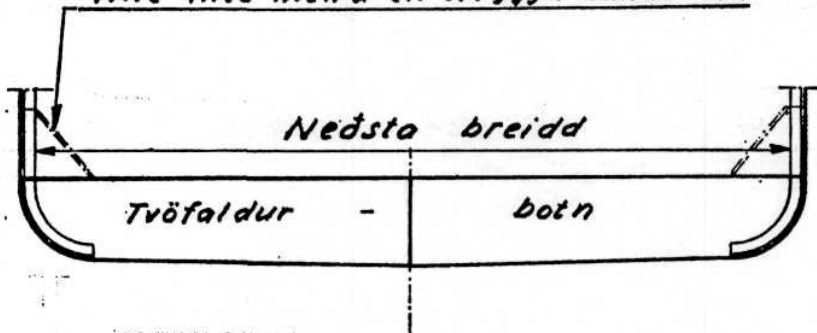


53. mynd

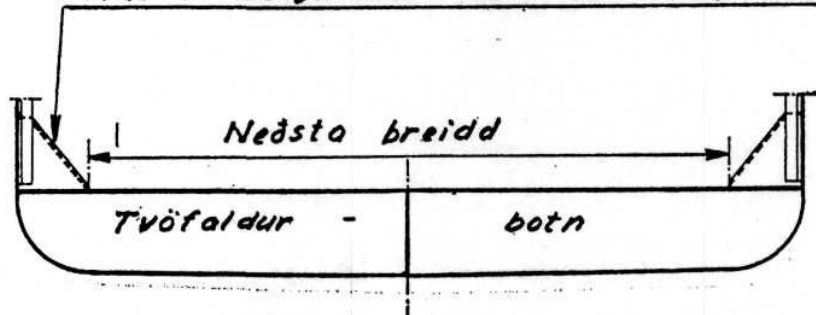
(38. gr. 1.)

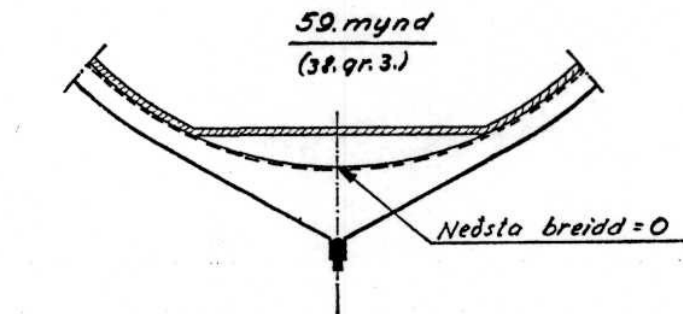
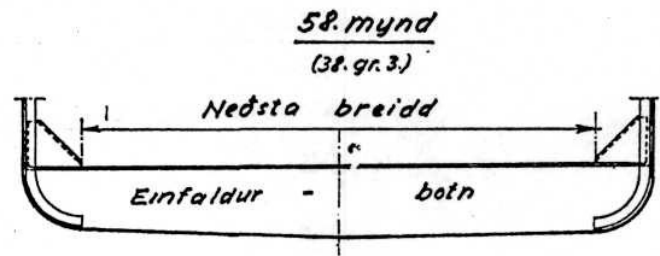
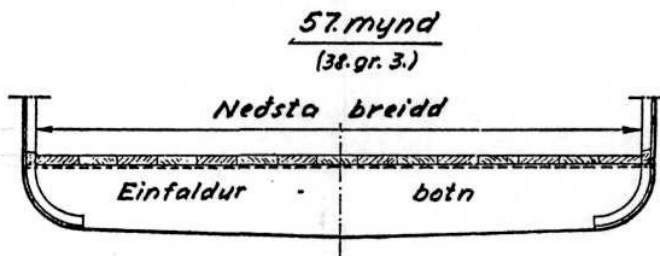
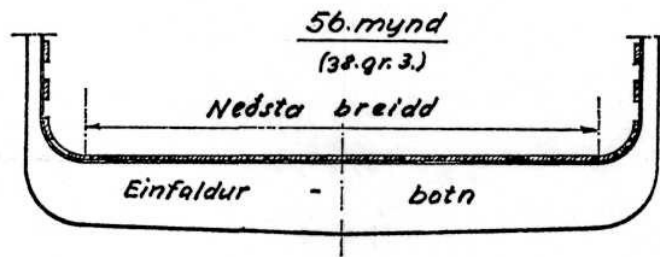
54. mynd

(38. gr. 1.)

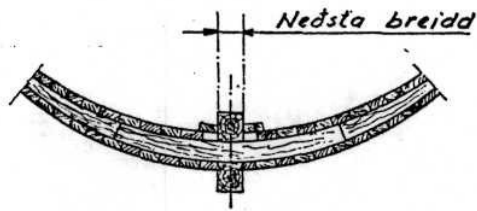
Hné með meira en tveggja banda bili55. mynd

(38. gr. 1.)

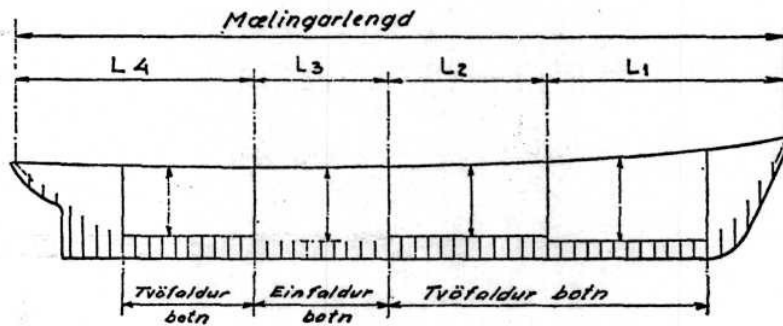
Hné á hverju bandi eða öðru hverju bandi



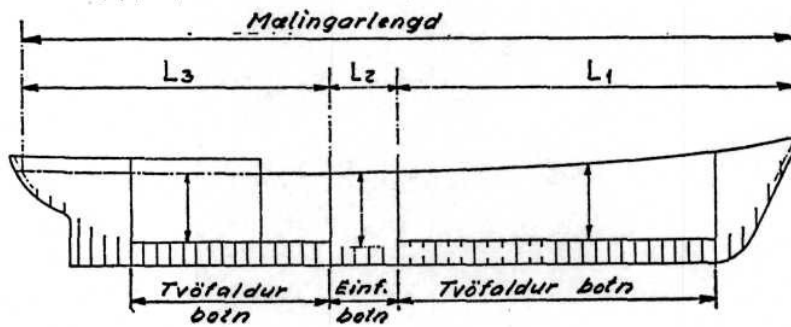
60. mynd
(38. gr. 3.)



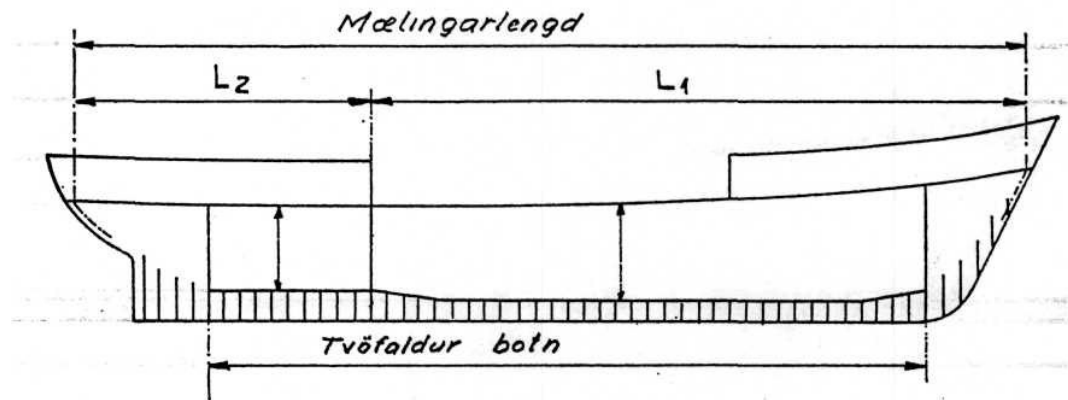
61. mynd
(42. gr.)



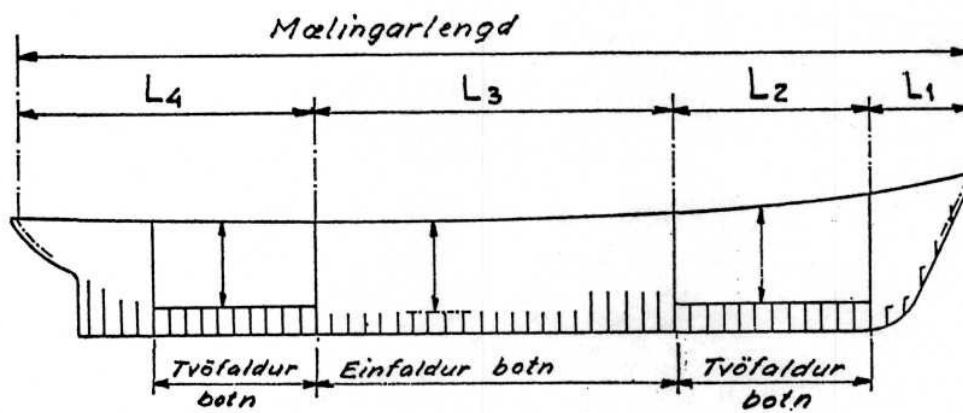
62. mynd
(42. gr.)



63. mynd
(42. gr.)

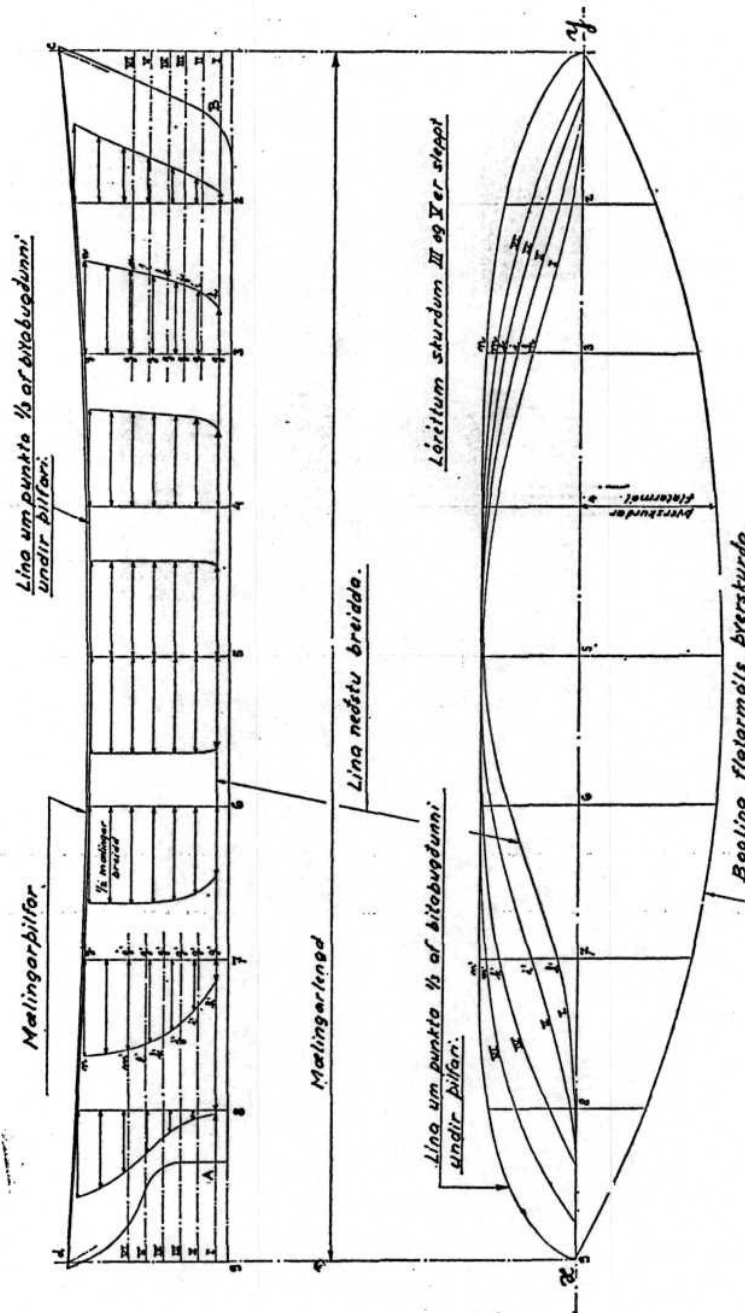


64. mynd
(42. gr.)



65. mynd
(44. gr.)

Renniskrobboglinur



ERROR: undefined
OFFENDING COMMAND: f`~

STACK: