

SMART HOME MONITORING



Motion Sensor

Set-Up Guide

Thanks for choosing Rogers Smart Home Monitoring!

Once you've set-up your Motion Sensor, you can receive notifications if motion is detected in your home. It's easy to set-up automation rules for your Motion Sensor, such as turning on the lights when someone enters the room. And there's also an optional setting to disable notifications when your pets are moving around.

Let's begin!

Helpful hints

Please refer to the enclosed **manufacturer's installation guide** for operating and safety instructions. To avoid injury, read all set-up and safety information included in your package before installing and setting up your device. As set out in your service agreement, Rogers will not be liable for any damage to your property as a result of your installation. If you encounter a problem setting up your device, or wish to book a Rogers technician to come set it up, please call Rogers Technical Support at **1-888-764-3771** or visit www.rogers.com/install.

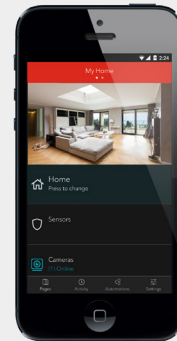
Package contents

1. Motion Sensor
2. Manufacturer's installation guide

Which Smart Home Monitoring plan do you have?

1. Basic Plan

You'll be installing this device with your smartphone today.
to go to Section 1.



or

2. Aware, Assure, Protect, Control Plan

You'll be installing this device with your Touchpad today.
to go to Section 2.



Can't remember which plan you're on? Login to your MyRogers account and look under "Account Services" or visit smarthome.rogers.com.

Helpful hints:

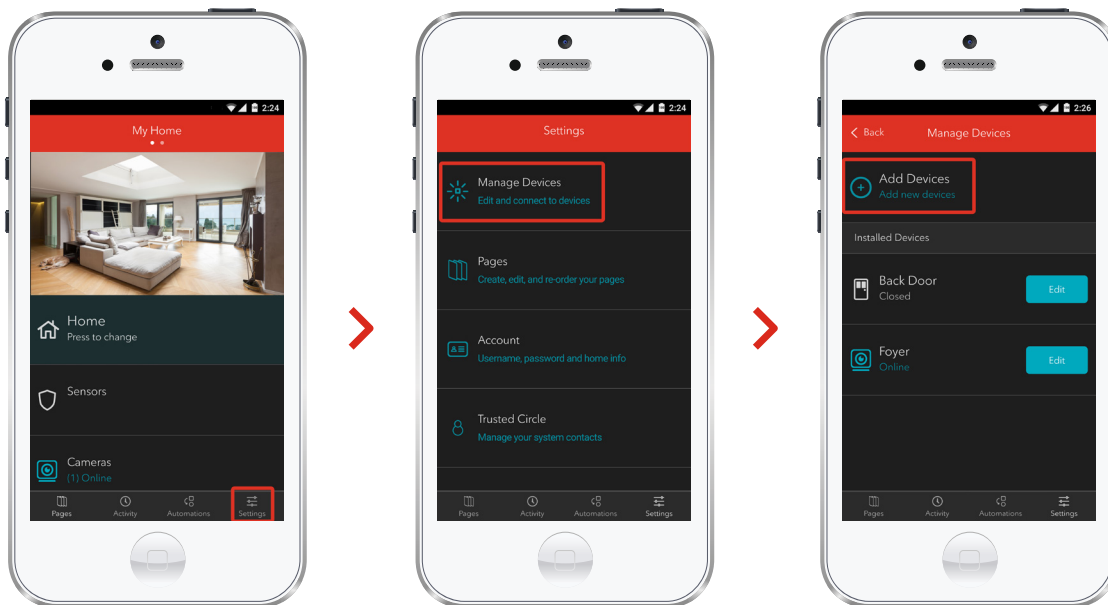
Please refer to the enclosed **manufacturer's installation guide** for operating and safety instructions. To avoid injury, read all set-up and safety information included in your package before installing and setting up your device. As set out in your service agreement, Rogers will not be liable for any damage to your property as a result of your installation. If you encounter a problem setting up your device, or wish to book a Rogers technician to come set it up, please call Rogers Technical Support at **1 888 764-3771** or visit www.rogers.com/install.

① Pairing the Motion Sensor with your smartphone

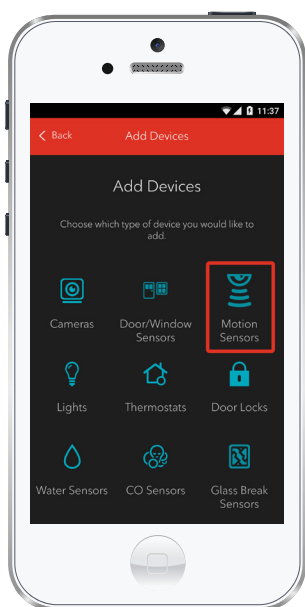
Before you begin:

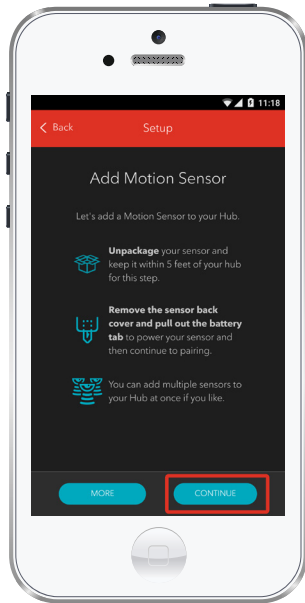
Login to your Rogers Smart Home Monitoring app. (Can't remember your login info? Visit rogers.com to retrieve your username or password). These steps should be followed once you have completed the activation of your Smart Home Monitoring Basic Kit.

1. Login to your Rogers Smart Home Monitoring app. (Can't remember your login info? Visit rogers.com to retrieve your username or password).
2. On **My Home** screen, tap **Settings**, then **Manage Devices** then **Add Devices**.



3. Tap **Motion Sensors**.





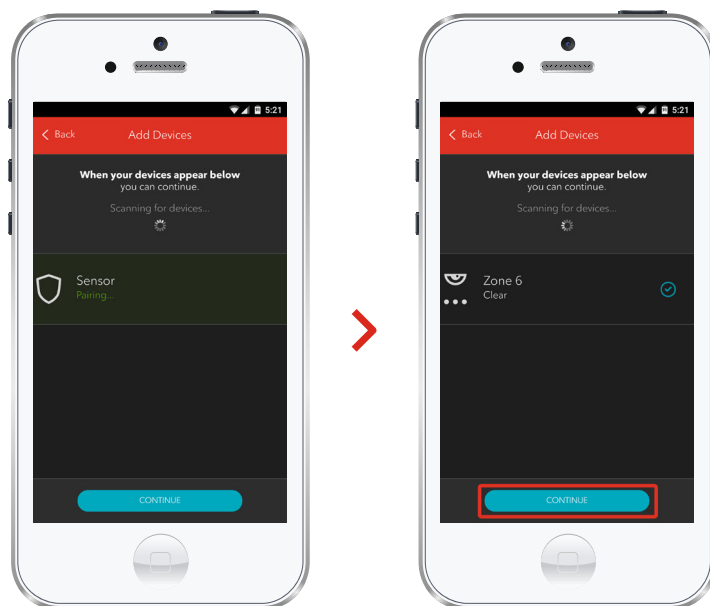
4. Prepare your Motion Sensor to be paired following the simple instructions on your screen. For more detailed instructions, you can tap **More**.

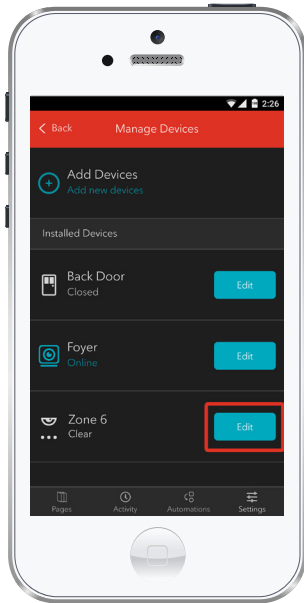
5. Once the Motion Sensor is detected you will see the **Sensor** icon, and **Pairing...** will appear.

Once pairing is complete, the **Sensor** icon will change to the **Zone** icon and a blue check mark will appear to the right.

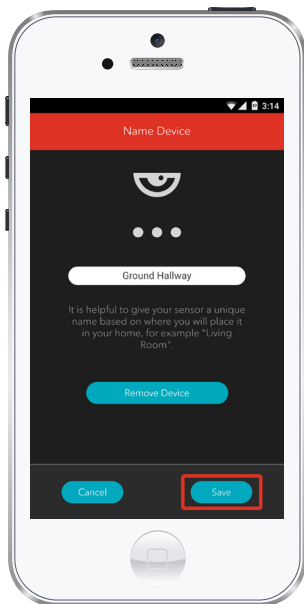
Please note the Hub may take between 1 to 3 minutes to detect the Motion Sensor.

Tap **Continue** to complete pairing.





6. Tap **Edit** to configure the Motion Sensor.



7. The naming box shows the default name of Motion Sensor. Tap on this box to customize its name (e.g. Ground Hallway).

When you're done, tap **Save**.

Your installation is done!

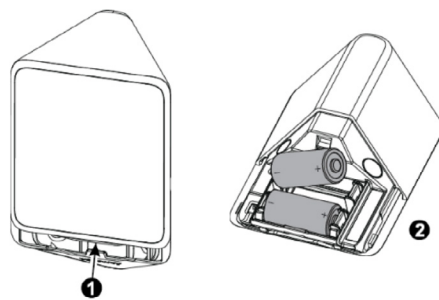
Your Motion Sensor is now part of your Smart Home Monitoring system. Now you can monitor your home remotely with your smartphone app and through the Web Control Centre.

Start using this device:

Use your smartphone app or visit the Web Control Centre at smarthome.rogers.com to:

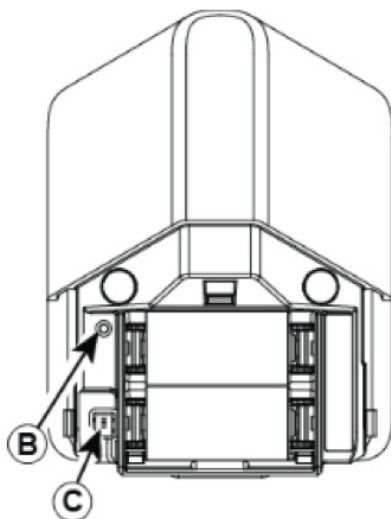
- Set-up rules such as turning lights on when someone walks into a room.
- Get an instant alert if unexpected movement is detected in your home.
- Learn more about the features of your Smart Home Monitoring system.

How to reset this device:



1. Separate the detector from the bracket and remove both batteries.

2. Press and hold down the detector's tamper switch. (C)



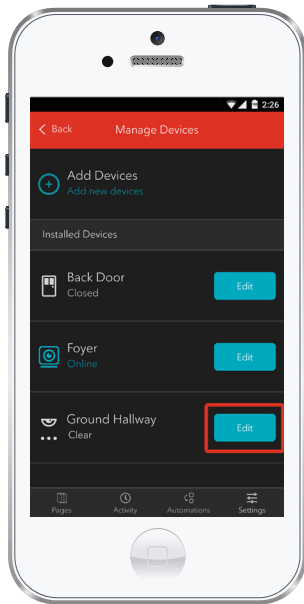
3. Insert one of the two batteries into the detector while observing battery polarity.

4. Release the tamper switch within 4 seconds (the LED (B) blinks 3 times every 5 seconds).

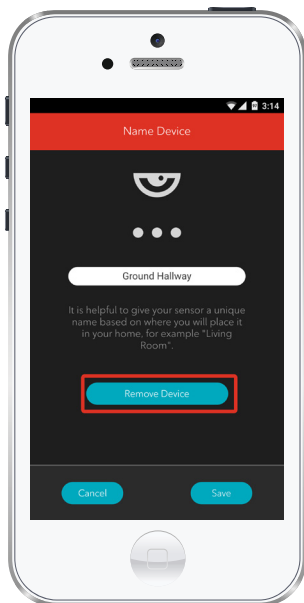
5. Now, try the pairing process again following the instructions in the Pairing the Motion Sensor section.

How to remove this device from your system:

Should you need at any point in the future to remove a Motion Sensor from your Rogers Smart Home Monitoring system, follow the steps below:



1. Log in to your Rogers Smart Home Monitoring mobile app.
2. On **My Home** screen, tap **Settings** at the bottom.
3. Go to **Manage Devices**.
4. Under **Installed Devices**, select the Motion Sensor you want to remove by tapping **Edit** next to the device name.



5. Under **Edit Device**, tap **Remove Device** (see example).
6. Tap **Save** to confirm.

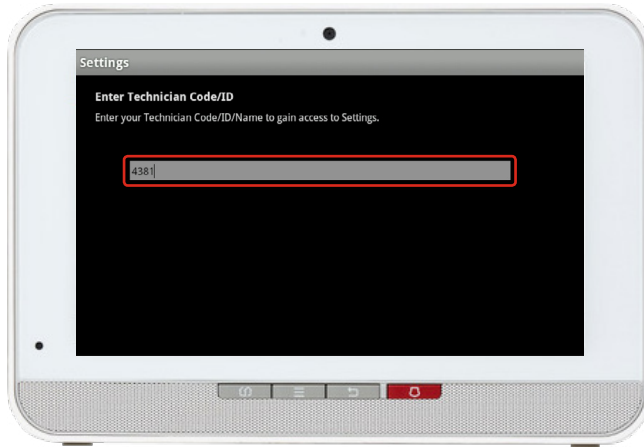
② Pairing the Motion Sensor with your Touchpad



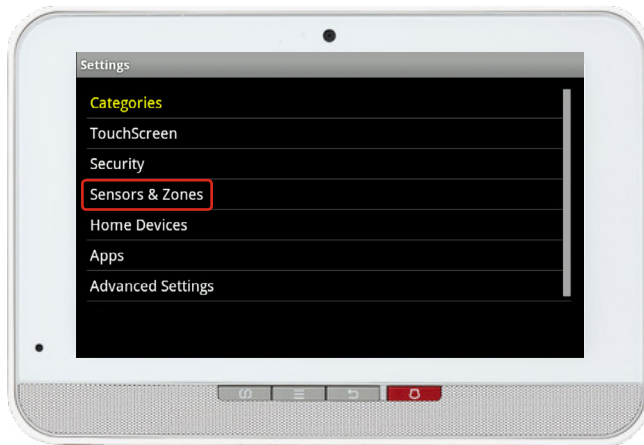
1. On the Touchpad, select the **Settings** app from the **Home Screen**.



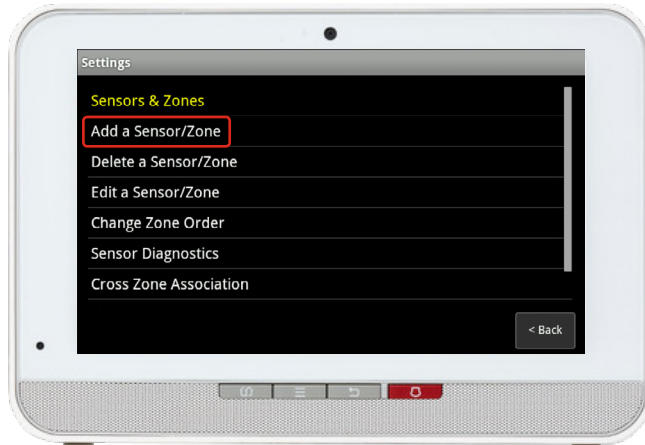
2. When prompted for your Master code, enter Technician Code: **4381**.



3. On the Tech ID page enter **4381** and click **Done**.



4. Select **Sensors & Zones**.

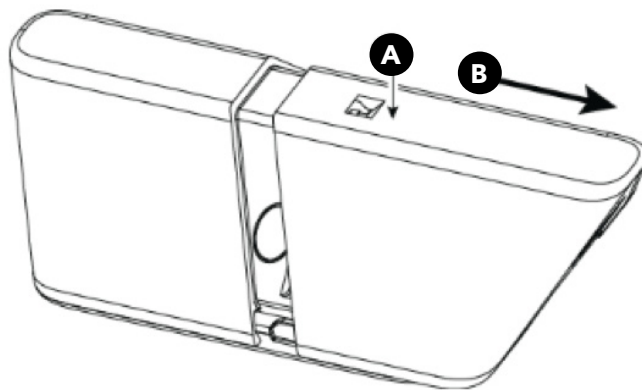


5. Select **Add a Sensor/Zone**.

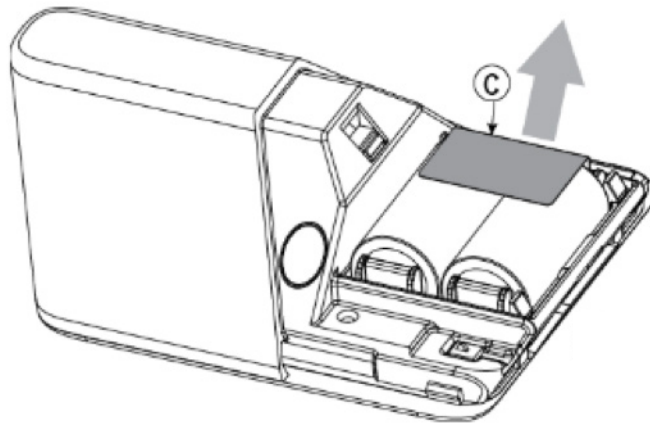
6. To put the sensor in pairing mode, remove the back cover of the Motion sensor.

A. Press in this point.

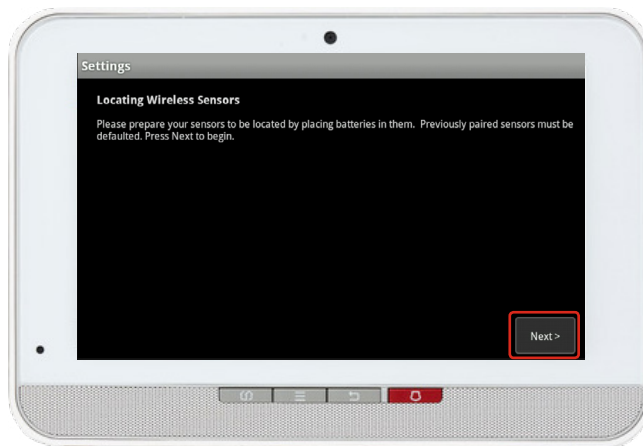
B. Push in the direction of the arrow shown in the drawing to separate the detector from the bracket.



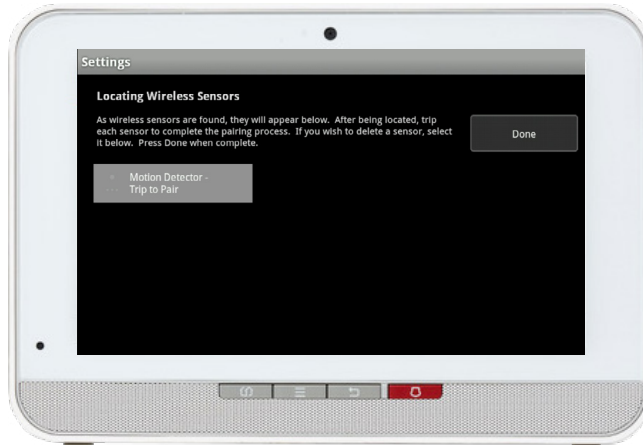
- C. Pull the activation strip (C). The green LED blinks 3 times every 5 seconds to indicate that the detector is in pairing mode.



Do not replace the back panel yet.

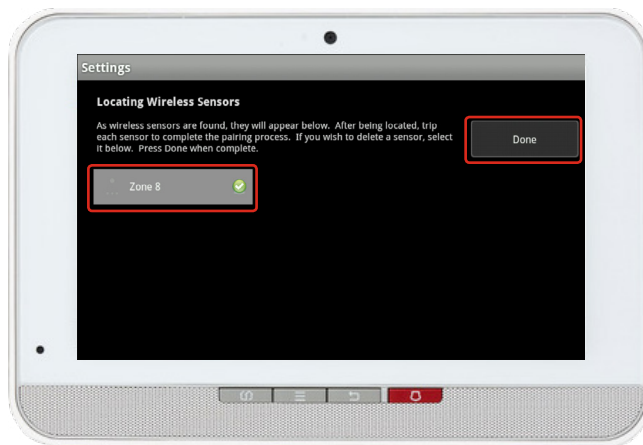


7. Click **Next** on the **Locating Wireless Sensors** screen. The Touchpad will now look for a sensor for up to 10 minutes.

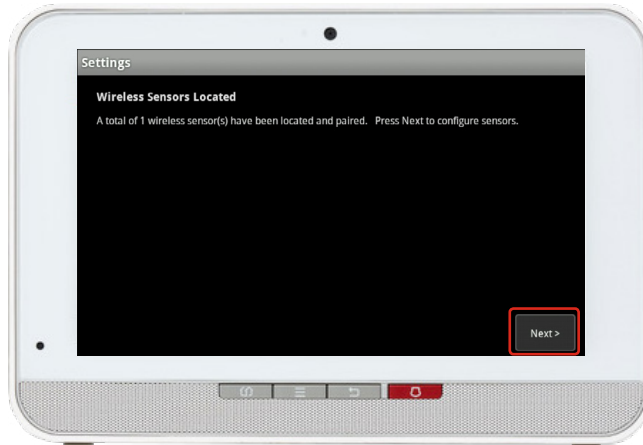


8. Wait for the icon **Trip to Pair** to appear as shown on the left.

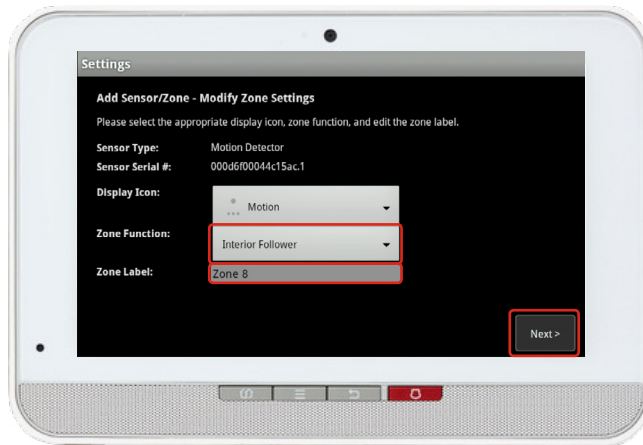
If you are unable to pair the sensor, refer to the reset to factory section and return back to Step 3 and continue through the pairing process.



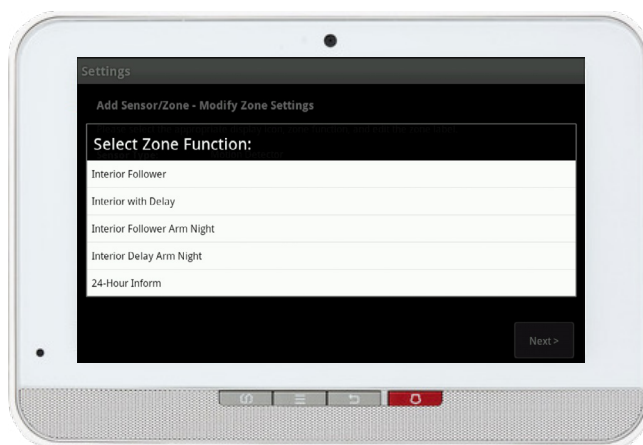
9. Now trip the sensor by replacing the bracket of the motion sensor
10. The icon will update with **Zone #** and a checkmark as shown on the left.
11. Once sensor pairing is successful, click **Done**.



12. Click **Next** on the following screen.



13. A list of all of the sensors currently paired to your Touchpad will appear.
14. Select the sensor you have just paired (labelled **Zone #**).



15. Zone functions for the Motion sensor are listed on the left. When on this screen, a function must be selected to close the prompt.

Each function is explained below:

Interior Follower

Only active when system is in Armed Away.

Interior with Delay

Only active when system is in Armed Away with entry delay.

Interior Follower Arm Night

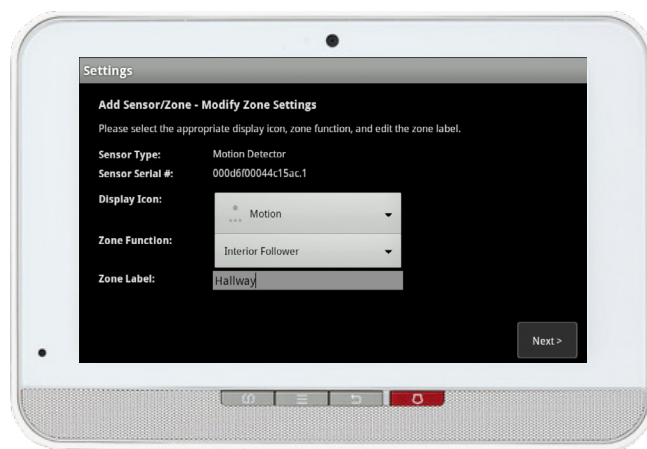
Active when system is Armed Away or Arm Night.

Interior Delay Arm Night

Active when system is Armed Away or Arm Night with entry delay.

24 Hr Inform

Always on, will never trigger an alarm (usually used in conjunction with a rule). An event is recorded in the history, and the Touchpad emits a configured sound.



16. Modify the zone name as desired and click **Next**. An example is shown on the left.
17. A list of the sensors will appear again now with your new sensor with its updated name. You may click on it again to modify it. Otherwise, complete the process by clicking on **Return to Menu**.

TROUBLESHOOTING:

If you are unable to pair the sensor, refer to the reset to factory section and return back to Step 3 and continue through the pairing process.

Note:

You are responsible for obtaining all necessary municipal permits for a home security system. In accordance with your municipal by-laws, a fine may be levied or police response to your premises may be suspended due to excessive false alarms or failure to obtain a permit.

In addition to the limitations of liability set out at Section 9 of the Terms, to the maximum extent permitted by applicable law, the Rogers Parties will not be liable to you or to any third party for any direct, indirect, special, consequential, incidental, economic or punitive damages (including loss of profit or revenue, financial loss, loss of business opportunities, loss, destruction or alteration of data, files, software, breach of privacy or security, property damage, personal injury, death, or any other foreseeable or unforeseeable loss, however caused) resulting or relating directly or indirectly from or relating to: (i) any malfunction, disruption or unavailability of the Home Monitoring Services (including, without limitation, the failure, for any reason, of the alarm system to operate or, if your Home Monitoring Services include central monitoring, of the recipient of any alarm signal to react properly);

INSTALLATION AND SET-UP OF EQUIPMENT

(Applicable where Rogers does not install the Equipment)

It is your responsibility to have the Equipment installed and set up. ROGERS IS NOT RESPONSIBLE FOR INSTALLING OR SETTING THE EQUIPMENT UP OR ENSURING THAT THE INSTALLATION OR SET-UP OF THE EQUIPMENT ARE APPLICABLE OR APPROPRIATE FOR THE USE OF YOUR EQUIPMENT IN YOUR PREMISES. ROGERS IS NOT LIABLE FOR ANY PROPERTY DAMAGES AS A RESULT OF SELF-INSTALLATION OR SET-UP OF THE EQUIPMENT.

Your installation is done!

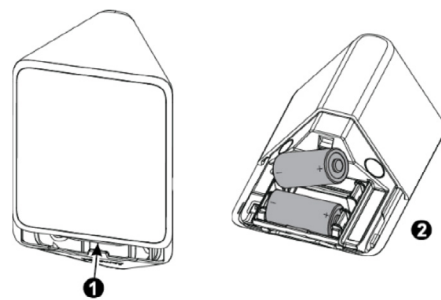
Your Motion Sensor is now part of your Smart Home Monitoring system. Now you can monitor your home remotely with your smartphone app and through the Web Control Centre.

Start using this device:

Use your smartphone app or visit the Web Control Centre at smarthome.rogers.com to:

- Set-up rules such as turning lights on when someone walks into a room.
- Get an instant alert if unexpected movement is detected in your home.
- Learn more about the features of your Smart Home Monitoring system.

How to reset this device:



1. Separate the detector from the bracket and remove both batteries.
2. Press and hold down the detector's tamper switch. (C)
3. Insert one of the two batteries into the detector while observing battery polarity.
4. Release the tamper switch within 4 seconds (the LED (B) blinks 3 times every 5 seconds).
5. Now, try the pairing process again following the instructions in the Pairing the Motion Sensor section.

