

SMART HOME MONITORING



Lamp Dimmer Module

Set-Up Guide

Thanks for choosing Rogers Smart Home Monitoring!

Once you've set-up your Lamp Dimmer Module, you will be able to automate the lighting in your home according to your schedule. Like turning on a light when the front door is opened, or scheduling the lights to turn on when you're away, so it appears you're home.

Let's begin!

Helpful hints

Please refer to the enclosed **manufacturer's installation guide** for operating and safety instructions. To avoid injury, read all set-up and safety information included in your package before installing and setting up your device. As set out in your service agreement, Rogers will not be liable for any damage to your property as a result of your installation. If you encounter a problem setting up your device, or wish to book a Rogers technician to come set it up, please call Rogers Technical Support at **1-888-764-3771** or visit www.rogers.com/install.

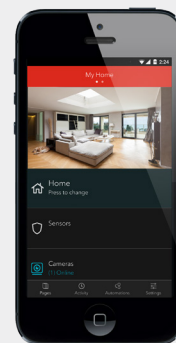
Package contents

1. Lamp Dimmer Module
2. Manufacturer's installation guide

Which Smart Home Monitoring plan do you have?

1. Basic Plan

You'll be installing this device with your smartphone today. to go to Section 1.



or

2. Aware, Assure, Protect, Control Plan

You'll be installing this device with your Touchpad today. to go to Section 2.



Can't remember which plan you're on? Login to your MyRogers account and look under "Account Services" or visit smarthome.rogers.com.

Helpful hints:

Please refer to the enclosed **manufacturer's installation guide** for operating and safety instructions. To avoid injury, read all set-up and safety information included in your package before installing and setting up your device. As set out in your service agreement, Rogers will not be liable for any damage to your property as a result of your installation. If you encounter a problem setting up your device, or wish to book a Rogers technician to come set it up, please call Rogers Technical Support at **1 888 764-3771** or visit www.rogers.com/install.

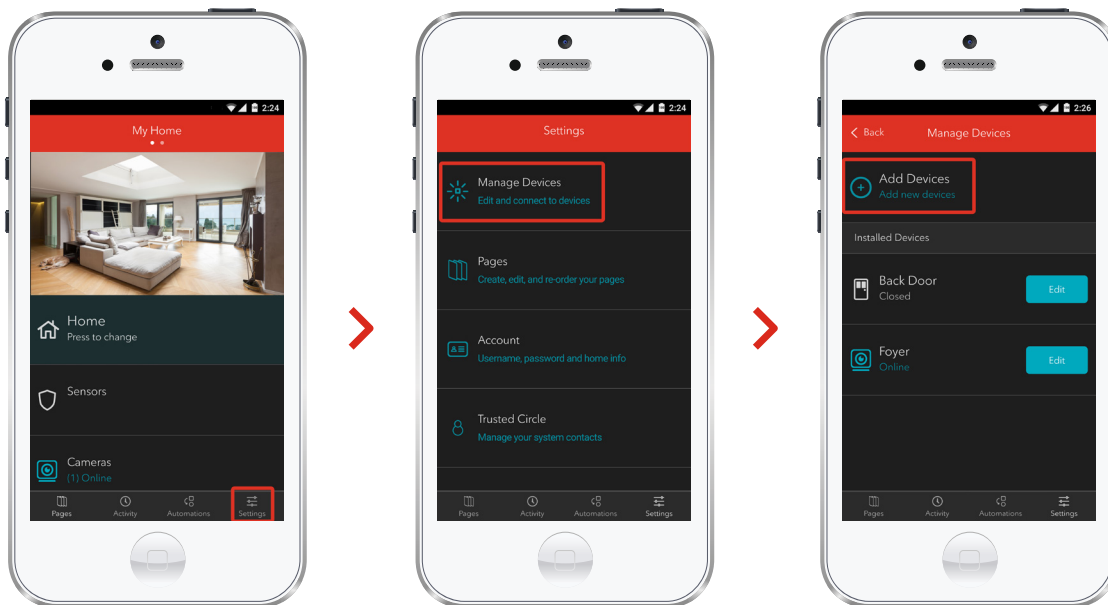
① Pairing the Lamp Dimmer Module with your smartphone

Before you begin:

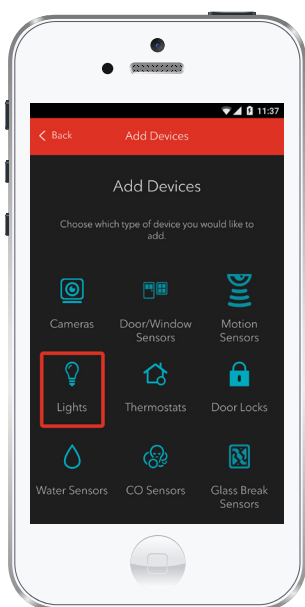
Login to your Rogers Smart Home Monitoring app. (Can't remember your login info? Visit rogers.com to retrieve your username or password). These steps should be followed once you have completed the activation of your Smart Home Monitoring Basic Kit.

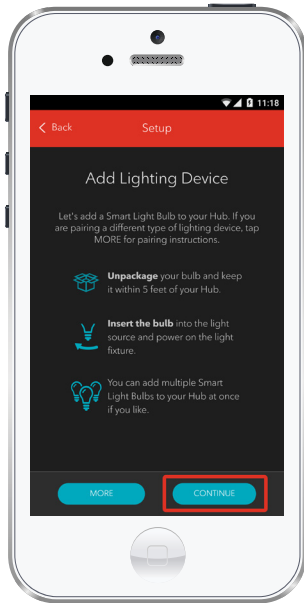
Note: Please install one Lamp Dimmer Module at a time.

1. Login to your Rogers Smart Home Monitoring app. (Can't remember your login info? Visit rogers.com to retrieve your username or password).
2. On **My Home** screen, tap **Settings**, then **Manage Devices** then **Add Devices**.



3. Tap **Lights**.



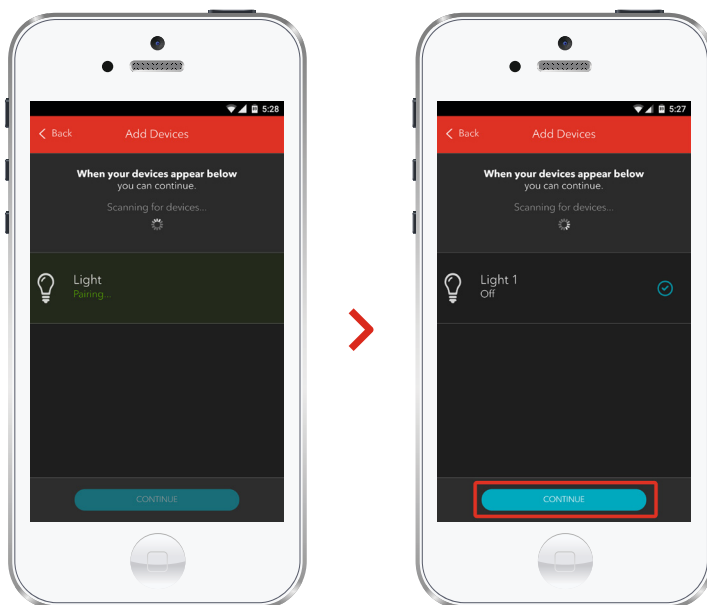


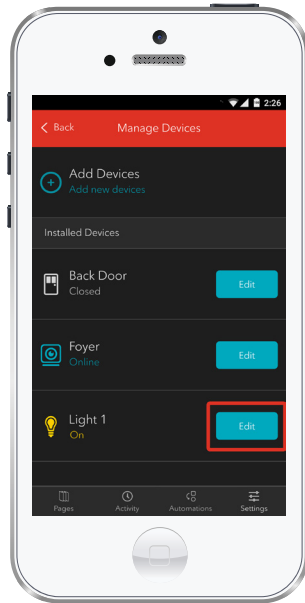
4. Prepare your Lamp Dimmer Module to be paired following the simple instructions on your screen. For more detailed instructions, you can tap [More](#).

5. You will now see a **Light** icon and **Pairing** will appear.

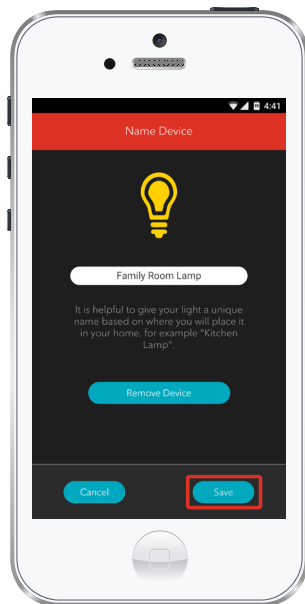
This will change to a **Light On/Off** icon once pairing is complete and a blue check mark will appear to the right.

Tap [Continue](#) to complete pairing.





6. Tap **Edit** to configure the Lamp Dimmer Module.



7. The naming box shows the default name of Lamp Dimmer Module. Tap on this box to customize its name. (e.g. Family Room Lamp).

When you're done, tap **Save**.

Your installation is done!

Your Lamp Dimmer Module is now part of your Smart Home Monitoring system. Now you can control your lamps remotely with your smartphone app and through the Web Control Centre.

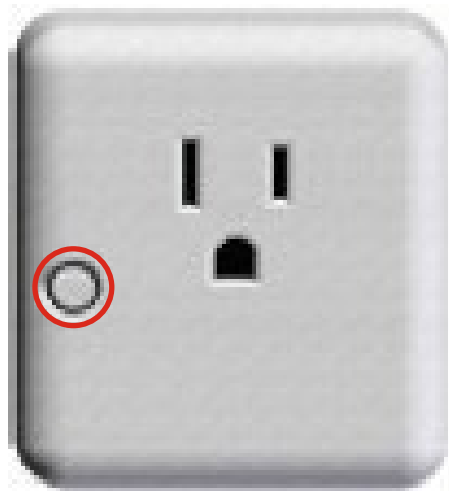
Start using this device:

Use your smartphone app or visit the Web Control Centre at smarthome.rogers.com to:

- Adjust the brightness in the room from your smartphone so you don't have to get up.
- Automate the lighting in your home according to schedules, or by automation rules.
- Learn more about the features of your Smart Home Monitoring system.

How to reset this device:

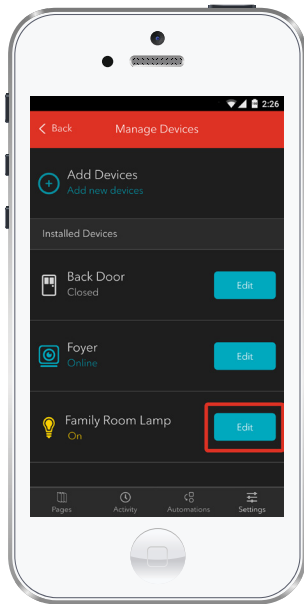
If you are trying to add your Lamp Dimmer Module to your Smart Home Monitoring system and you are unable to pair it in the first few attempts, or if you see an error while pairing, try the following steps to reset the Lamp Dimmer Module and then pair it again.



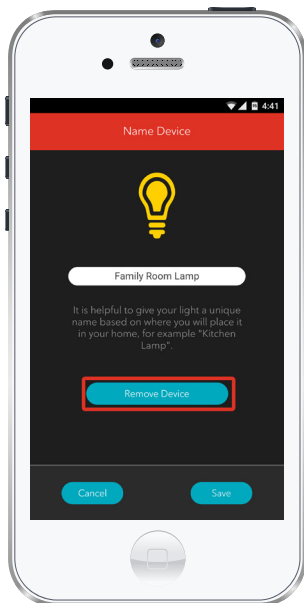
1. Remove the Lamp Dimmer Module from the wall outlet.
2. Press and hold the **small white button** in front of the Lamp Dimmer Module. While holding the button, plug the Lamp Dimmer Module back into the wall outlet. When the LED flashes BLUE, release the button.
3. Now, try the pairing process again following the instructions in the Pairing the Lamp Dimmer Module section.

How to remove this device from your system:

Should you need at any point in the future to remove a Lamp Dimmer Module from your Rogers Smart Home Monitoring system, follow the steps below:



1. Log in to your Rogers Smart Home Monitoring mobile app.
2. On **My Home** screen, tap **Settings** at the bottom.
3. Go to **Manage Devices**.
4. Under **Installed Devices**, select the Lamp Dimmer Module you want to remove by tapping **Edit** next to the device name.



5. Under **Edit Device**, tap **Remove Device** (see example).
6. Tap **Save** to confirm.

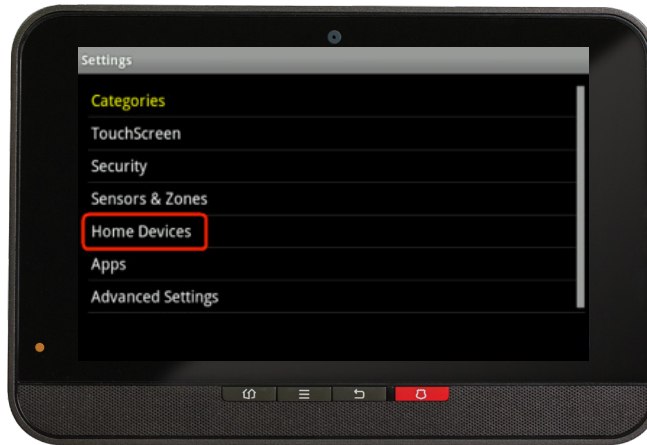
② Pairing the Lamp Dimmer Module with your Touchpad



1. Plug the Lamp Dimmer Module into a wall outlet
2. Ensure your Smart Home Monitoring system is disarmed.
3. On the Touchpad, select the **Settings** app from the **Home Screen**.



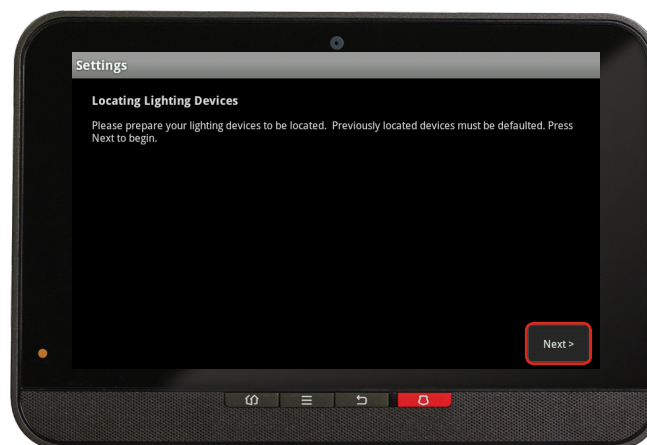
4. Enter your **4-digit** Master Access Code. (The same code that you use to manage your system.)



5. Under the **Categories** list select **Home Devices**.



6. Scroll down and select **Lighting**, then select **Add Lights**.

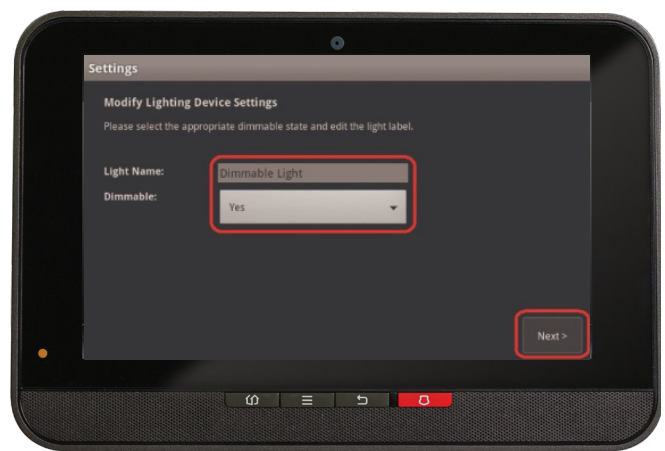


7. On the **Locating Lighting Devices** screen press **Next**.



8. On the Touchpad a Dimmable Light icon will appear once pairing is complete. Please note this may take 2 to 5 minutes.

9. Click **Done** once the Dimmable Light icon appears and hit **Next** to confirm



10. The **Dimmable Light** icon will appear again. Tap on it to customize its name (i.e. Living Room Lamp). Ensure that Dimmable is set to **Yes**.

11. Click **Next** when done

12. Click **Return To Menu** to complete the pairing of the Lamp Dimmer Module

Your installation is done!

Your Lamp Dimmer Module is now part of your Smart Home Monitoring system. Now you can control your lamps remotely with your Touchpad, your smartphone app and through the Web Control Centre.

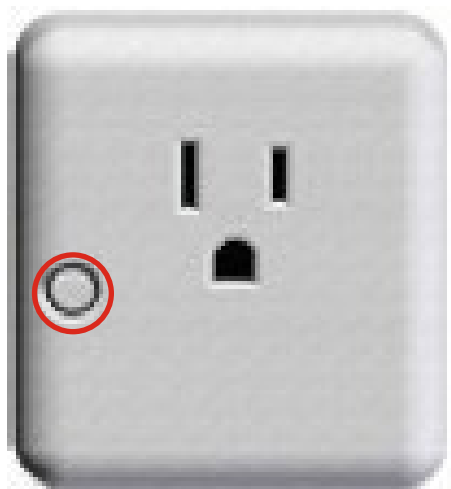
Start using this device:

Use your smartphone app or visit the Web Control Centre at smarthome.rogers.com to:

- Adjust the brightness in the room from your smartphone so you don't have to get up.
- Automate the lighting in your home according to schedules, or by automation rules.
- Learn more about the features of your Smart Home Monitoring system.

How to reset this device:

If you are trying to add your Lamp Dimmer Module to your Smart Home Monitoring system and you are unable to pair it in the first few attempts, or if you see an error while pairing, try the following steps to reset the Lamp Dimmer Module and then pair it again.



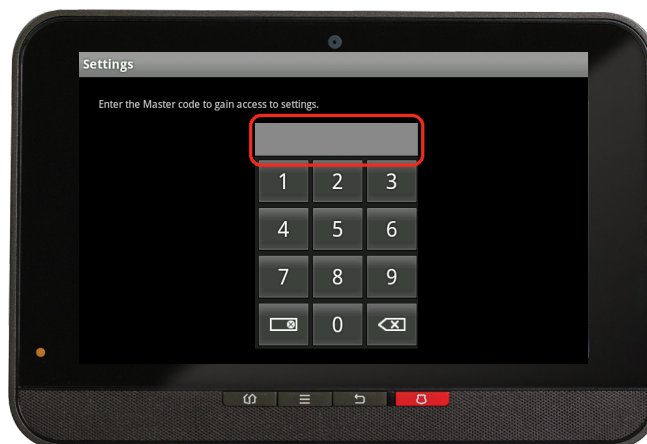
1. Remove the Lamp Dimmer Module from the wall outlet.
2. Press and hold the **small white button** in front of the Lamp Dimmer Module. While holding the button, plug the Lamp Dimmer Module back into the wall outlet. When the LED flashes BLUE, release the button.
3. Now, try the pairing process again following the instructions in the Pairing the Lamp Dimmer Module section.

How to remove this device from your system:

Should you need at any point in the future to remove your Lamp Dimmer Module from your Rogers Smart Home Monitoring system, follow the steps below:



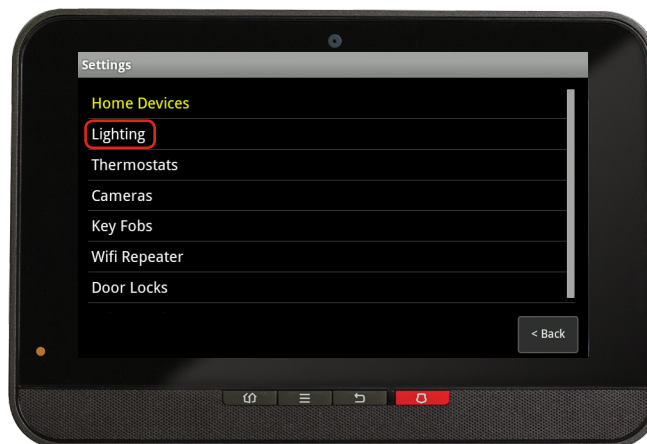
1. Ensure your Smart Home Monitoring system is disarmed.
2. On the Touchpad, select the **Settings** app from the **Home Screen**.



3. Enter your **4-digit** Master Access Code (This is the same code that you use to manage your system.)



4. Select **Home Devices** under the **Categories** list.



5. Under **Home Devices**, select **Lighting**. On the next screen, select **Delete Lights**.
6. Now, select the Lamp Dimmer Module you want to delete and press **Yes** to confirm.

The Lamp Dimmer Module you selected has now been removed from your system.

7. Click **Return to Menu** to exit the screen.