

SMART HOME MONITORING



In-Wall Switch or In-Wall Dimmer

Manufacturer's Installation Guide

This dimmer switch is designed for use with permanently installed lighting fixtures only. The switch has been optimized for use with incandescent lighting as well as with most dimmable CFL and LED bulbs. The maximum load ratings for this switch are 600W for incandescent bulbs and 150W for dimmable CFL and LED's. Lighting controlled by this switch must not exceed these stated limits.

Installation Configurations

This switch may be used in new installations or to replace an existing wall switch.

It may be used in the following configurations:

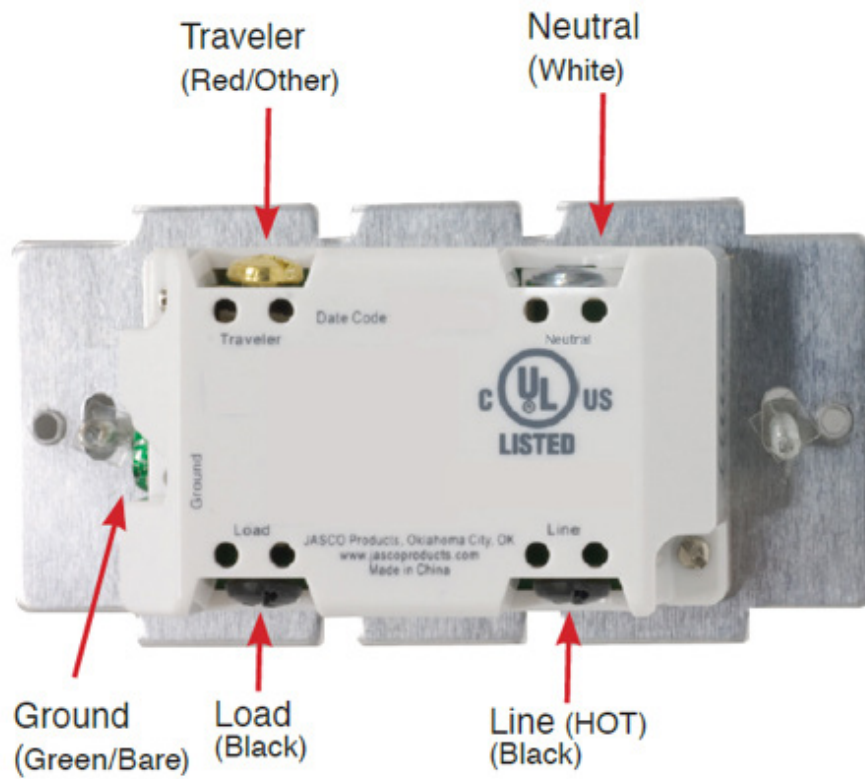
- › By itself for 2-way control (one switch & one load)
- › By adding one Jasco Auxiliary Switch for 3-way control (two switches & one load)
- › By add two Jasco Auxiliary switches for 4-way control (three switches & one load)

When used by itself for 2-way control, please make sure that the screw terminal for the traveler wire is insulated. Do not remove the tape over the terminal if you are not using the traveler connection.

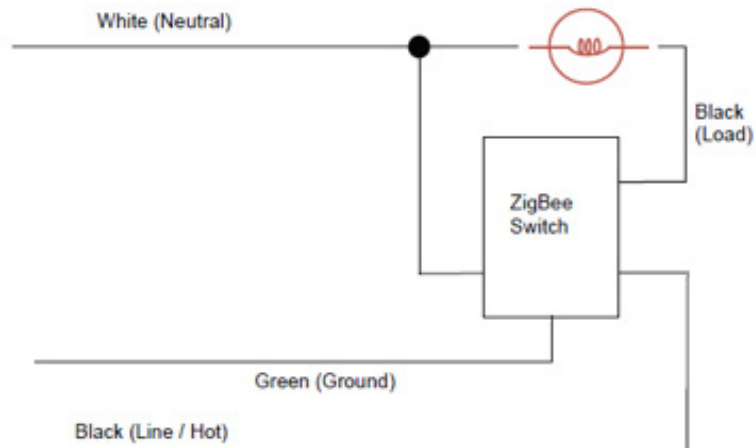
WARNING — SHOCK HAZARD

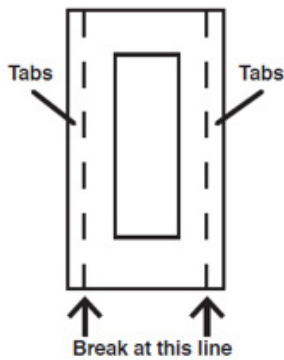
Turn OFF the power to the branch circuit for the switch and lighting fixture at the service panel. All wiring connections must be made with the POWER OFF to avoid personal injury and/or damage to the switch.

Wiring Diagrams



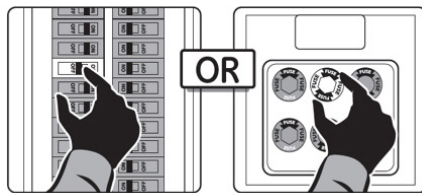
Single switch wiring using one primary switch





Single, Dual and Triple Gang Boxes

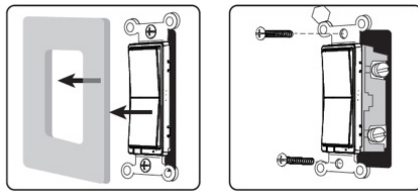
When installing the In-Wall On/Off switch in multiple gang boxes it may be necessary to break off one or both of the scored tabs on the front yoke.



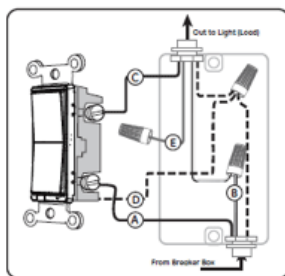
Wiring Instructions

1. Shut off power to the circuit at circuit breaker or fuse box.

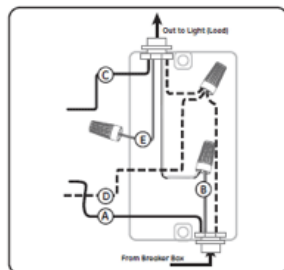
Warning: Verify power is OFF to switch box before continuing.



2. Remove wall plate.
3. Remove the existing switch's mounting screws.
4. Carefully remove the existing switch from the switch box. DO NOT disconnect the wires.



5. There are up to five screw terminals on the existing switch; these are marked
 - A. LINE (Hot) – Black (connected to power)
 - B. Neutral – White
 - C. LOAD – Black (connected to lighting)
 - D. GROUND – Green/Bare
 - E. TRAVELER – Red/Other

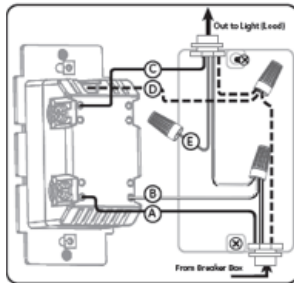
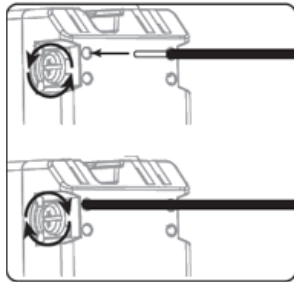


Match these screw terminals to the wires connected to the existing switch.

6. Disconnect the wires from the existing switch. Be careful to label wires according to the previous terminal connection.

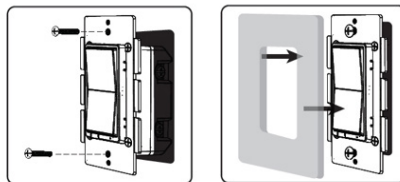
The Jasco Auxiliary switch is required for Multi-Switch 3-way or 4-way installations.

Connecting the traveler terminal of this switch to a standard, non-Jasco switch will cause damage or result in improper function. If this switch is a part of a 3-way or 4-way multi-switch installation, do not connect the traveler wire or apply power until Jasco Auxiliary switches are correctly installed. For more information on 3-way or 4-way installations, view the manual or quick-start guide that comes with the Jasco Auxiliary switch.



7. Connect the green or bare copper ground wire to the GROUND terminal.
8. Connect the black wire that goes to the light to the terminal marked LOAD.
9. Connect the black wire that comes from the electrical service panel (Hot) to the terminal marked LINE.
10. Connect the white wire to the neutral terminal.

Note: *UL specifies that the tightening torque for the screws is 14 Kgf-cm (12 lbf-in).* The Traveler terminal is only used for 3-way or 4-way wiring and should remain insulated if the switch is being installed in a 2-way system (one switch & one load).



11. Insert Switch into the switch box being careful not to pinch or crush wires.
12. Secure the switch to the box using the supplied screws.
13. Mount the wall plate.
14. Reapply power to the circuit at fuse box or circuit breaker and test the system.