

Compounded Tirzepatide Self-Injection Guide

[Link to instructional video](#)

Supplies

- **Medication** - Tirzepatide vial
- **Syringe and needle** - ensure proper size for subcutaneous injections
- **Alcohol wipes** - for a sterile injection site
- **Sharps container** - for safe disposal of used needles

Dosing

Note: Injections amounts are measured in UNITS.

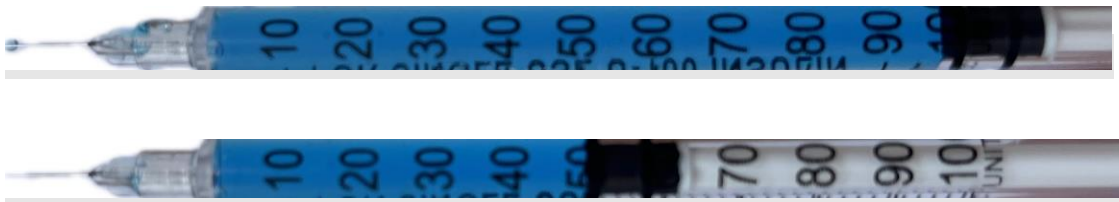
Tirzepatide 10mg/dose — inject 100 units



Tirzepatide 12.5mg/dose — inject 125 units

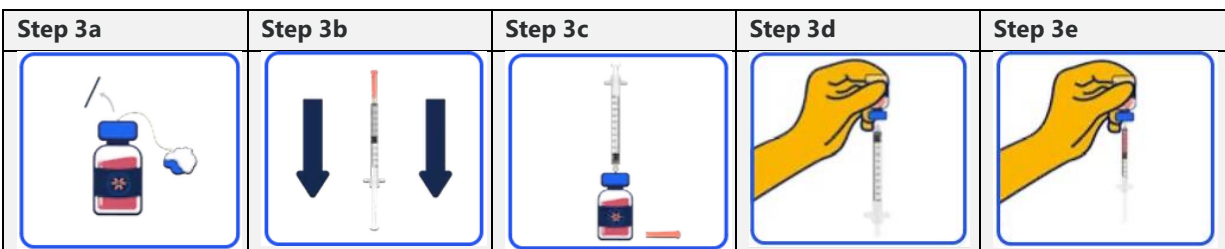


Tirzepatide 15mg/dose — inject 150 units



Preparation

1. **Wash your hands thoroughly**
2. **Confirm the correct medication**
3. **Prepare the medication for injection:**
 - a. Turn the vial upright and clean rubber stopper with alcohol swab
 - b. Draw up a dose of the prescribed UNITS (see above) with air
 - c. Put needle in vial and inject air in vial
 - d. While needle is in vial, turn it upside down
 - e. Draw out the prescribed UNITS (see above) into the syringe
 - f. Turn the vial upright and remove the needle from the vial



Injection

1. **Choose the injection site** — subcutaneous injections are primarily injected into the abdomen or optionally the upper/outer thigh.
2. **Sterilize the site** — Use an alcohol swab to clean the chosen area.
3. **Skin pinch** — Pinch a fold of skin between thumb and forefinger.
4. **Needle insertion** — insert the needle at a 90-degree angle.
5. **Needle removal** — withdraw the needle gently.
6. **Dispose of sharps** — safely discard used needle and syringe in a sharps container.

Note: For personalized guidance or concerns, consult a healthcare professional. Always adhere to prescribed dosage and guidelines for optimal results in self-administration. If you have any further questions or concerns, please let us know.