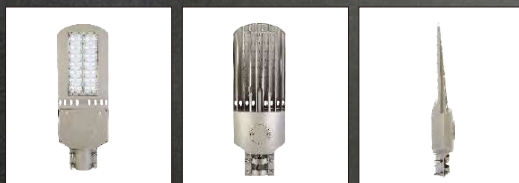




COLUMBUS-I SERIES

LED STREET LIGHT 20W-100W

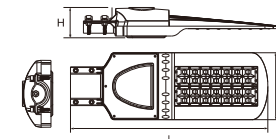
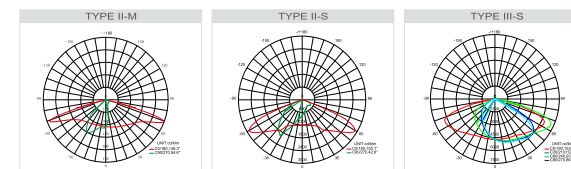


Features

1. Brand LED light source and driver, ensure the performance and quality
2. Die casting housing, high efficiency and modular design on optic lens part
3. Wattages cover 20W to 100W
4. Built-in driver and SPD
5. NEMA standard receptacle optional
6. Can be modified to use with solar system

Application

Country road, Collector road, Local road, Residential road



Technical parameter

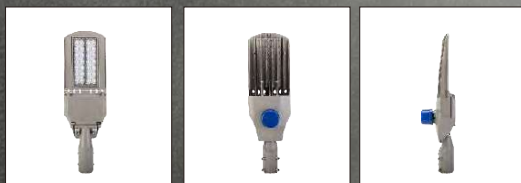
Model No.	System Power	Luminous Efficiency	Structure Description	Product Size(L*W*H)mm	Weight(kg)
MS-ST236020	20W	130lm/W, 150lm/W	Die-casting aluminum	560*190*86	3.2
MS-ST237030	30W	130lm/W, 150lm/W	Die-casting aluminum	560*190*86	3.2
MS-ST238040	40W	130lm/W, 150lm/W	Die-casting aluminum	560*190*86	3.5
MS-ST240050	50W	130lm/W, 150lm/W	Die-casting aluminum	560*190*86	3.5
MS-ST239060	60W	130lm/W, 150lm/W	Die-casting aluminum	560*190*86	3.5
MS-ST516070	70W	130lm/W, 150lm/W	Die-casting aluminum	560*190*86	3.7
MS-ST517080	80W	130lm/W, 150lm/W	Die-casting aluminum	560*190*86	3.7
MS-ST518090	90W	130lm/W, 150lm/W	Die-casting aluminum	560*190*86	3.7
MS-ST519100	100W	130lm/W, 150lm/W	Die-casting aluminum	560*190*86	3.7





COLUMBUS-II SERIES

LED STREET LIGHT
20W-150W

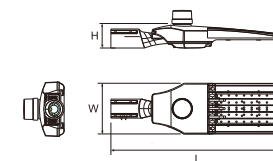
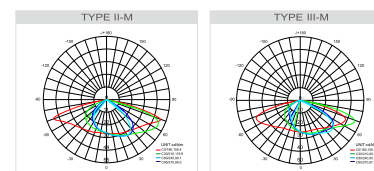
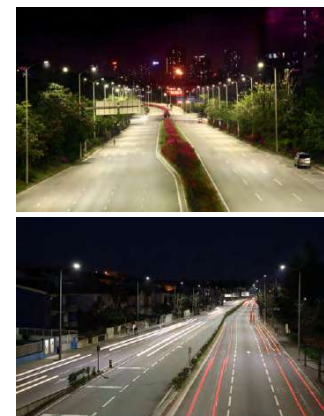


Features

1. Brand LED light source and driver, ensure the performance and quality
2. Die-casting housing, high efficiency and modular design on optic lens part
3. Wattages cover 20W to 150W
4. Built-in driver and SPD
5. NEMA standard receptacle optional
6. Can be modified to use with solar system

Application

Country road, Collector road, Local road, Residential road



Technical parameter

Model No.	System Power	Luminous Efficiency	Structure Description	Product Size(L*W*H)mm	Weight(kg)
MS-ST236020	20W	130lm/W, 150lm/W	Die-casting aluminum	686*200*96	4.9
MS-ST237030	30W	130lm/W, 150lm/W	Die-casting aluminum	686*200*96	4.9
MS-ST238040	40W	130lm/W, 150lm/W	Die-casting aluminum	686*200*96	4.9
MS-ST240050	50W	130lm/W, 150lm/W	Die-casting aluminum	686*200*96	4.9
MS-ST239060	60W	130lm/W, 150lm/W	Die-casting aluminum	686*200*96	4.9
MS-ST516070	70W	130lm/W, 150lm/W	Die-casting aluminum	686*200*96	4.9
MS-ST517080	80W	130lm/W, 150lm/W	Die-casting aluminum	686*200*96	4.9
MS-ST518090	90W	130lm/W, 150lm/W	Die-casting aluminum	686*200*96	4.9
MS-ST519100	100W	130lm/W, 150lm/W	Die-casting aluminum	686*200*96	4.9
MS-ST519110	110W	130lm/W, 150lm/W	Die-casting aluminum	790*260*102	7.4
MS-ST519120	120W	130lm/W, 150lm/W	Die-casting aluminum	790*260*102	7.4
MS-ST519130	130W	130lm/W, 150lm/W	Die-casting aluminum	790*260*102	7.4
MS-ST519140	140W	130lm/W, 150lm/W	Die-casting aluminum	790*260*102	7.4
MS-ST519150	150W	130lm/W, 150lm/W	Die-casting aluminum	790*260*102	7.4

