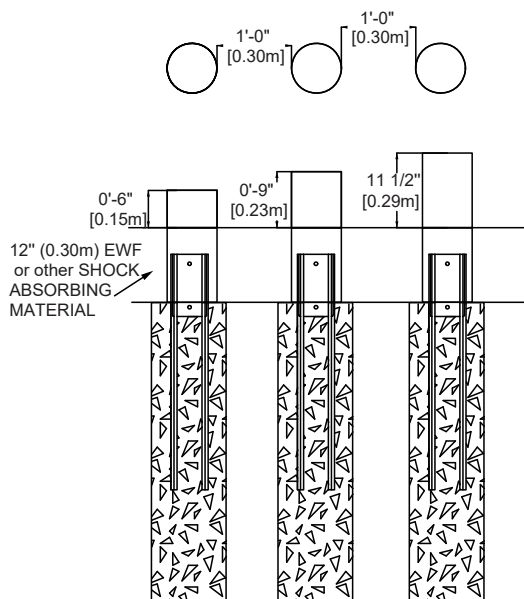
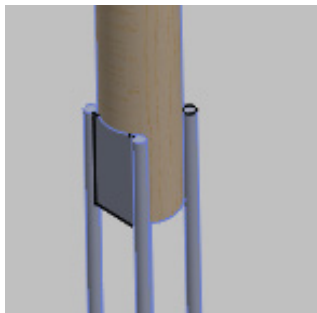


Wood Pods

EP-NS-008 2-5 years old (ASTM & CSA)



* GALVANIZED STEEL STRUCTURE



CHARACTERISTICS

Age Group : 2-5

Height : 6" / 9" / 11 1/2"

Capacity : variable

Safety Zone : 72" around the layout

This equipment can be adapted according to the customer's request.

MATERIALS

Trunks: 10" to 12" diameter.

Eastern white cedar is installed by default, Black Locust is also available on request. Prices differ depending on the choice of materials.

Protection applied in the workshop. If you want to avoid graying, protection must be applied annually.

ANCHORS TYPE

Galvanized steel structure or concrete sonotubes. The concrete used for the foundation be minimum 25 Mpa at 28 days with entrained air. The base should be at least 36" or deeper depending on the frost line in your area.

The equipment is design to be installed in a 12" (300mm) of resilient material (EWF, rubber or sand). If the tickness varies, please specify when ordering.

The foundation must be installed in undistrubed soil or the backfill around sonotubes must be made of 0-3/4" aggregate in successive layers not exceeding 12" to reach 95% of M.P.

PLAY VALUE

This equipment favorises balance, stability, coordination and global motricity. It can be used by many users simultaneously, which encourages collaborative and social play. Moreover, the vestibular and proprioceptive systems are stimulated by this type of equipment, which helps to develop the perception of the body into space.

AVAILABLE WOOD

