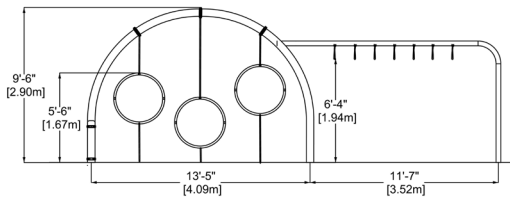
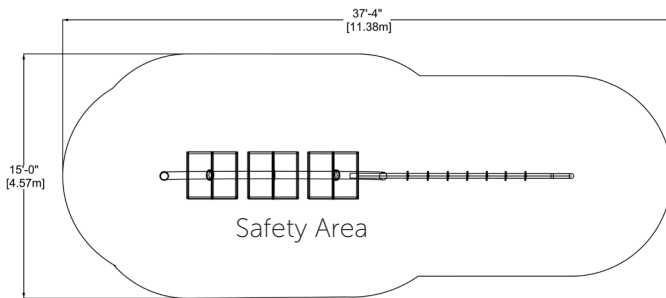
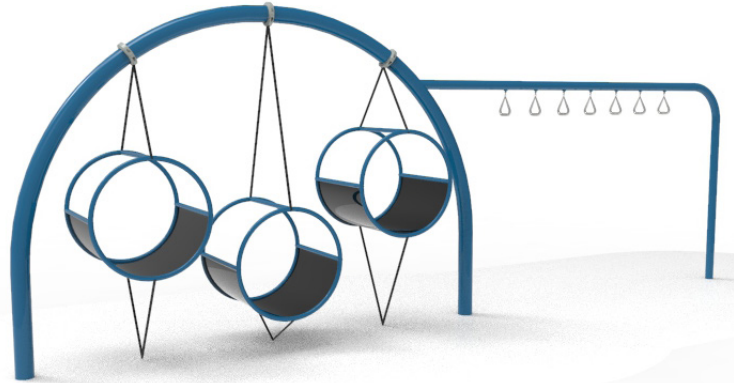


TEEN ARK 1
EP-ADO-ARCH001*



*New product: Technical details in this document may change during engineering and production.



CHARACTERISTICS

Age Group: 12+
Capacity: 10
Height: 9'6" (2.90m)
Fall height: 5'8" (1.73m)

The equipment is designed to be installed in 12" (0.30m) of resilient material (EWF, rubber or sand).

MATERIALS

Structure: powder coated steel.
Cables: braided UV-resistant nylon over seven (7) galvanized steel cables; 0,8" (20mm) diameter;
Seats: rubber with woven nylon core

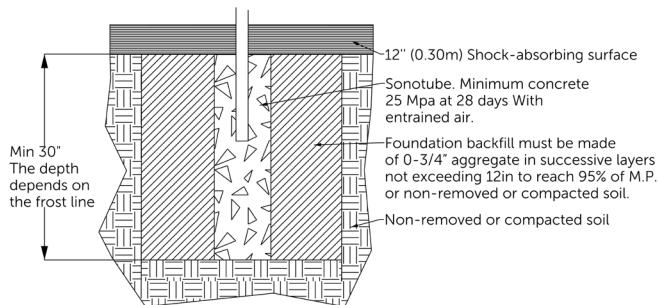
ANCHORS TYPE

Concrete poured in 24"Ø sonotube by 60" deep.
The concrete used for the foundation be minimum 25 Mpa at 28 days with entrained air.
The foundation backfill must be made of 0-3/4" aggregate in successive layers not exceeding 12in to reach 95% of M.P.

PLAY VALUE

Gathering place for teens and training equipment.
Suspension handles and crossbar, tunnel also serves as seat.

INSTALLATION DETAILS



AVAILABLE COLORS - STRUCTURE

Ral 1005	Ral 1014	Ral 1018	Ral 1019	Ral 1028	Ral 2011	Ral 3000
Ral 3022	Ral 3027	Ral 4001	Ral 4003	Ral 4006	Ral 5002	Ral 5012
Ral 5017	Ral 5021	Ral 6011	Ral 6018	Ral 6019	Ral 6026	Ral 6027
Ral 6033	Ral 7024	Ral 7035	Ral 8024	Ral 9003	Silver matte	Black

