

Log Dam

EP-NS-0038



CHARACTERISTICS

Age Group : 5-12 years old
 Height : 8'-6"
 Capacity : 60
 Safety Zone : 6' all around equipment
 This equipment must be installed on level ground.

MATERIALS

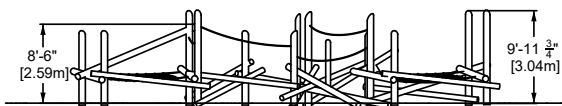
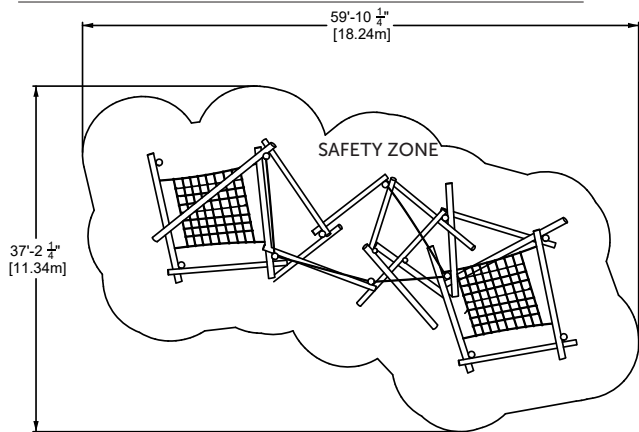
Structure : cedar trunks, minimum 5-7" diameter. Eastern white cedar is installed by default. Robinia is also available on request. The price may vary.
Net : braided UV-resistant nylon over seven (7) galvanized steel cables; 0,8" (20mm) diameter;
Assemblies : Seamless 2" diameter aluminum casted cross joint.

ANCHORS TYPE

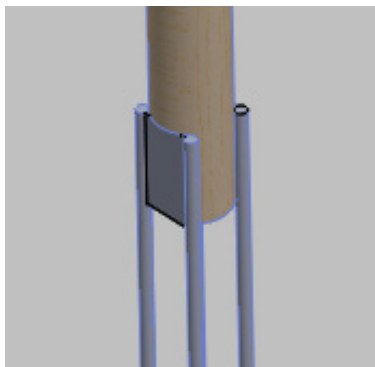
Concrete footing.
 The base should be at least 36" or deeper depending on the frost line in your area. The equipment is design to be installed in a 12" (300mm) of resilient material (EWF, rubber or sand).

PLAY VALUE

This equipment encourages contact with nature and favors strenght, coordination and global motricity. It can be used by many users simultaneously, which encourages collaborative, social and role play. Moreover, the vestibular and proprioceptive systems are stimulated by this type of equipment, which helps to develop the perception of the body into space.



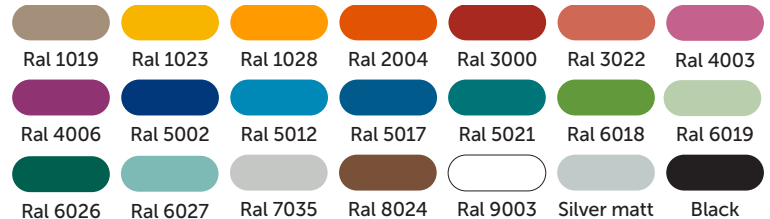
* GALVANIZED STEEL STRUCTURE



AVAILABLE COLORS - WOODS



AVAILABLE COLORS - PAINT



AVAILABLE COLORS - CABLES

