

# Treehouses\*

EP-TOD-VIL1000



\* New Product: The technical details contained in this document may change during engineering and production.



## CHARACTERISTICS

- Age Group : 2-5 years old
- Height (structure) : 11'- 2 1/2" (3.41m)
- Fall Height : 3'-5 3/4" (1.06m)
- Capacity : 20
- Safety zone : 38'-6 3/4" x 25'-8 1/4" (11.75m x 7.83m)

## MATERIALS

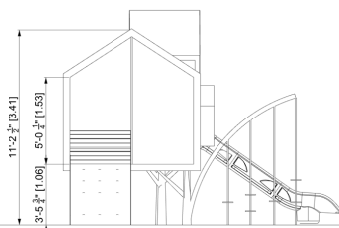
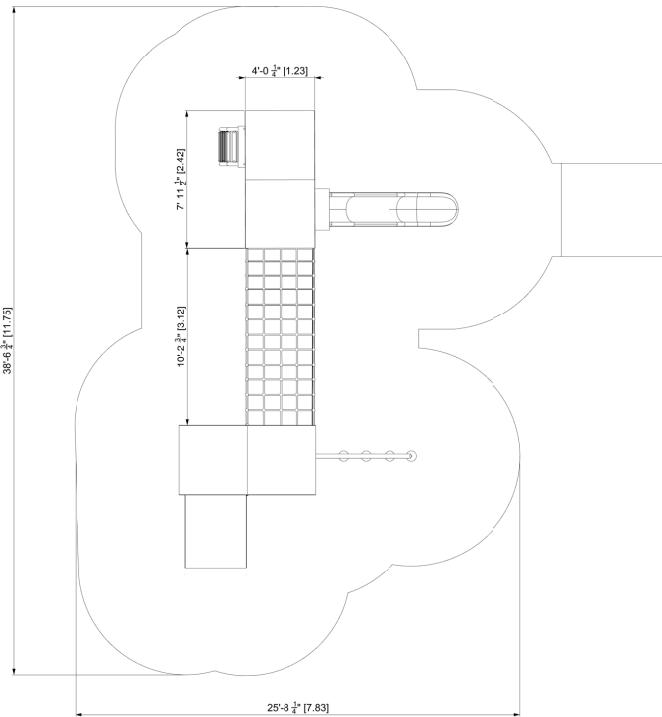
- Structure : galvanized and powder coated steel;
- Walls and railings: composite paper or wood or plastic or sheet steel
- Bridge: reinforced rubber surfaces
- Slide : rotomoulded HDPE.
- Cables : braided UV-resistant nylon over seven (7) galvanized steel cables; 0,8" (20mm) diameter;
- Net Accessories : UV-resistant HDPE plastic,
- Climbing holds : polyurethane.

## ANCHORS

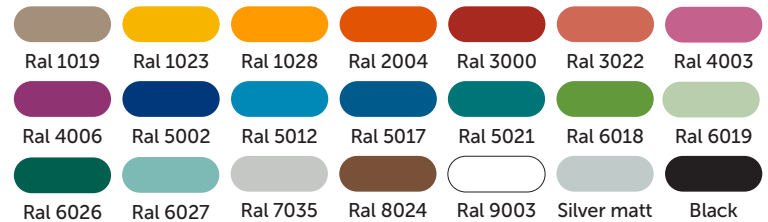
Poured concrete. The concrete used for the foundation be minimum 25 Mpa at 28 days with entrained air. The foundation backfill must be made of 0-3/4" aggregate in successive layers not exceeding 12in to reach 95% of M.P.

## PLAY VALUE

The treehouses is a concept of space in the image of the graphic organization of the child from 2 to 5 years old where the simplicity of the basic lines creates a simple and harmonious whole. The game is equipped with a bridge and a very wide climber facilitating use by several children and allowing the adult to accompany his child. The ladder and discs provide an additional level of difficulty for those with more developed motor skills. The slides are a must for the pleasure of the child, but also play a big role in the development of the proprioceptive system.



## AVAILABLE COLORS - STRUCTURE



## AVAILABLE COLORS - ROPES



## AVAILABLE COLORS - HDPE

