

Erasmus Mundus Joint Master Degree (EMJMD) scholarship details for the International Master of Science in Rural Development

The EMJMD student scholarships include:

- a contribution to the students' participation costs (including the tuition fees, library and laboratory costs, full insurance coverage and any other mandatory costs related to the students' participation in the Master);
- a contribution to student travel and installation costs;
- a monthly subsistence allowance for the entire duration of the EMJMD study programme.

Details on the EMJMD student scholarship amounts are given in the table below:

Description of the cost contribution	Student nationality or residence	Scholarship amount
Contribution to the participation costs	National of a Programme Country ¹	€ 4500 per year
	National of a Partner Country ²	€ 9000 per year
Contribution to the travel and installation costs	Resident of a Programme Country	€ 1000 per year
	Resident of a Partner country whose location is situated at less than 4.000 km from the Ghent	€ 2000 per year + € 1000 for installation costs
	Resident of a Partner country whose location is situated at 4.000 km or more from the Ghent	€ 3000 per year + € 1000 for installation costs
Contribution to subsistence costs*	All students	€ 1000 per month

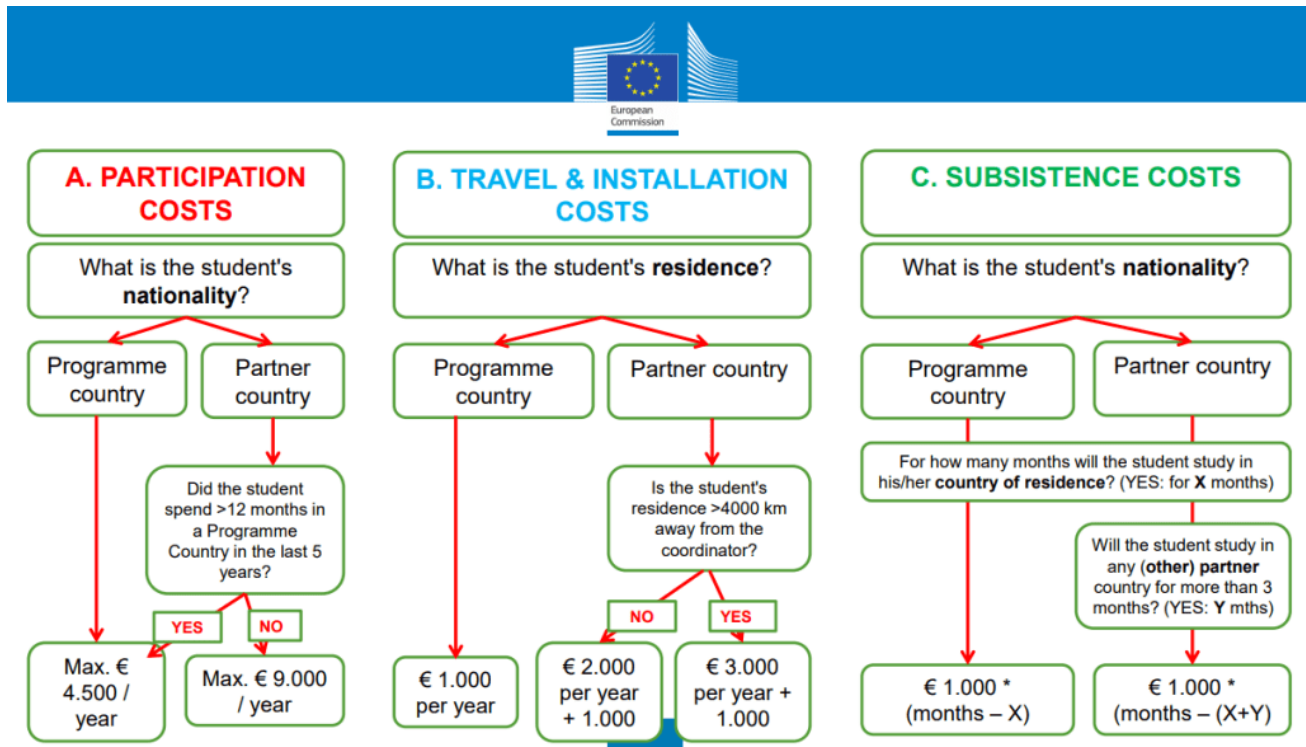
*Contribution to subsistence costs will not be given to scholarship holders for the EMJMD periods (study/research/internships/Case Study/thesis preparation) spent in their country of residence; or to scholarship holders from a Partner Country for the EMJMD periods exceeding three months (indicatively the equivalent of 15 ECTS credits) spent in any Partner Country.

¹ Programme Country: a member state of the EU + Republic of North Macedonia, Serbia, Iceland, Liechtenstein, Norway, Turkey

² For an exhaustive list of Partner Countries please check the [Erasmus+ programme guide](#)

Scholarship calculation scheme

Below a scheme on how scholarships are calculated per student.



Scholarship Selection

Scholarships are awarded to a selection of top ranked candidates every year. The ranking is based on the following criteria which are submitted by the student during the application process:

- Prior degree relevance and level
- Academic pre-requisites
- Academic scores of prior degrees
- Reference letters
- Motivation
- Hypothetical thesis proposal

The final selection is done during the IMRD selection committee meeting at the end of March or early April. The committee will select students for an Erasmus Mundus scholarship based on their ranking, student motivation, work experience, gender equality and choice of IMRD focus area.

Scholarship deadline

The deadline for scholarship application is 28 February. All applications submitted after this deadline will not be evaluated for an Erasmus Mundus scholarship.