



Rogue River Organics

Talent, OR 97540

Sample 150-101223-247

Rainbow Runtz (THCA Hemp)

Batch/Lot # RR634.25

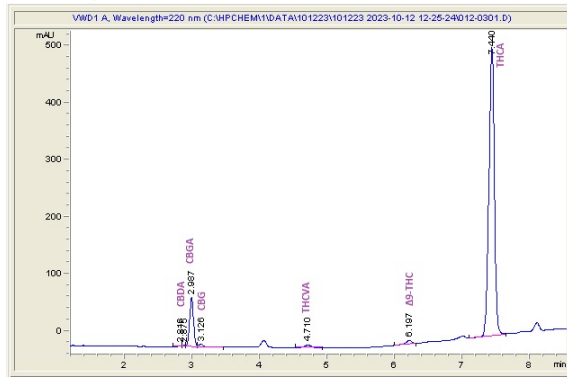
Sample Submitted: 10-12-2023; Report Date: 10-18-2023

Rainbow Runtz (THCA Hemp)

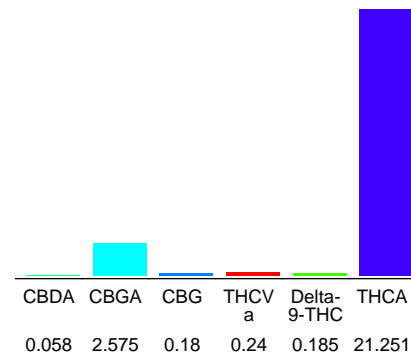
Plant Material: Flower

Batch/Lot # RR634.25

Chromatogram



Cannabinoid Profile



Cannabinoid Profile by HPLC

0.19%
Delta-9-THC

0.00%
CBD

24.49%
Total Cannabinoids

Cannabinoid	% wt	mg/g
CBDA	0.058	0.58
CBGA	2.575	25.75
CBG	0.18	1.8
THCVa	0.24	2.4
Delta-9-THC	0.185	1.85
THCA	21.25	212.51
Total Cannabinoids	24.49	244.9
Calculated Total THC	18.82	188.22
Calculated CBD Yield	0.05	0.51

Calculated Total THC = Delta-9-THC + 0.877 * THCA
Calculated Maximum CBD Yield = CBD + 0.877 * CBDA

Marin Analytics, LLC
250 Bel Marin Keys Blvd, Suite D4
Novato, CA 94949
833-321-TEST / info@marinanalytics.com

Sara Biancalana
Sara Biancalana
Chief Scientist

This sample has been tested by Marin Analytics, LLC using valid testing methodologies and a quality system. Values reported relate only to the sample tested. Marin Analytics, LLC makes no claims as to the efficacy, safety, or other risks associated with any detected or non-detected levels of any compounds reported herein. This Certificate shall not be reproduced except in full without the written approval of Marin Analytics, LLC. Copyright 2023 Marin Analytics, LLC All Rights Reserved.